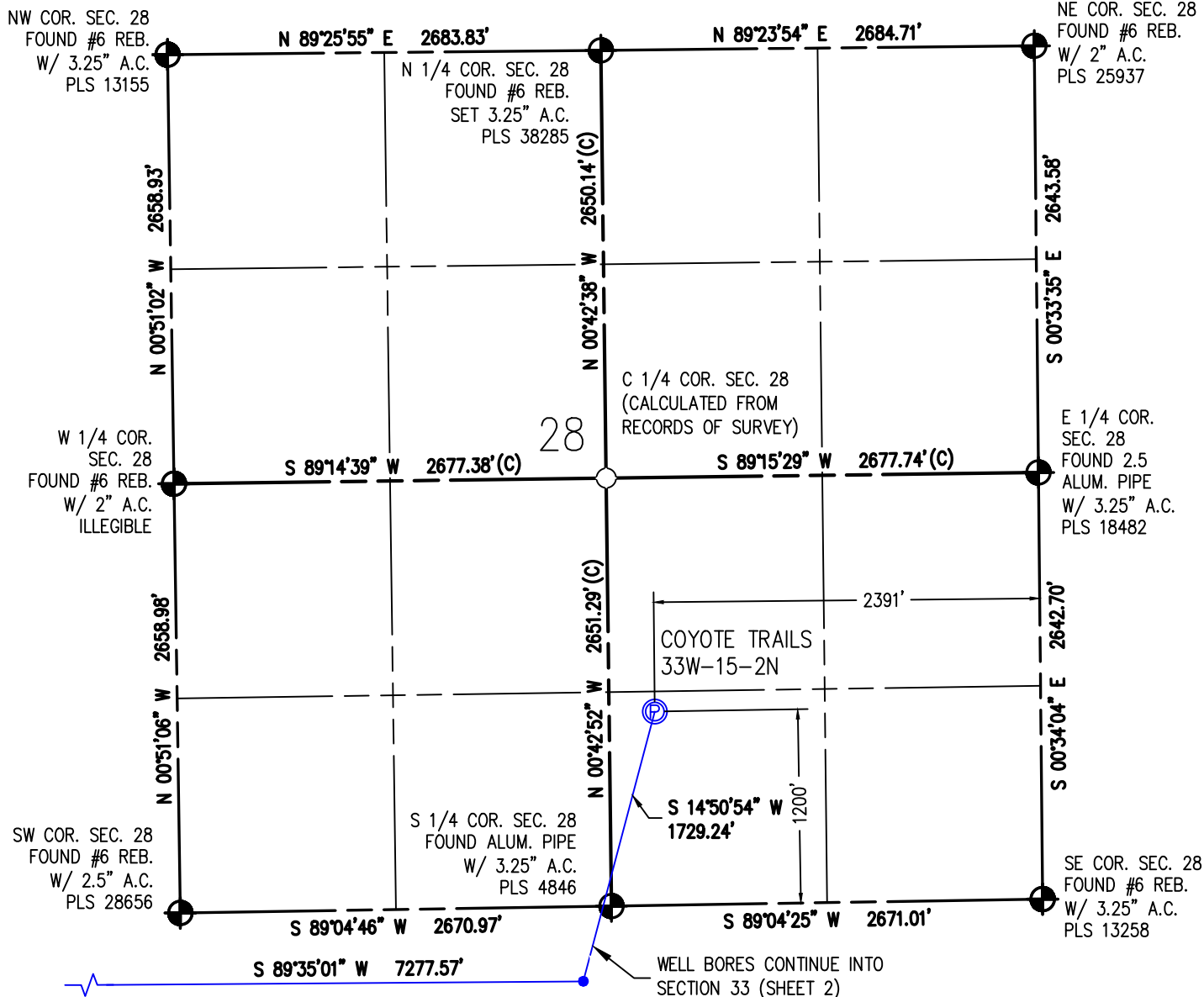


WELL CERTIFICATION EXHIBIT COYOTE TRAILS 33W-15-2N

SW1/4 SE1/4 SEC. 28, T1N, R68W, 6TH P.M.



I HEREBY CERTIFY THAT THIS WELL LOCATION CERTIFICATE WAS PREPARED BY ME, OR UNDER MY DIRECT SUPERVISION, THAT THE FIELD WORK WAS COMPLETED ON 06/30/2017, THAT IT IS NOT A LAND SURVEY PLAT OR AN IMPROVEMENT SURVEY PLAT, AND THAT IT IS NOT TO BE RELIED UPON FOR ESTABLISHMENT OF FENCE, BUILDING OR OTHER FUTURE IMPROVEMENT LINES.

AARON A. DEMO
Professional Land Surveyor Registration No. 38285
State of Colorado
FOR AND ON BEHALF OF BASELINE ENGINEERING CORP.

N

0 1000'
Scale 1" = 1000' ft

SURFACE LOCATION
SEC. 28, T1N, R68W
GROUND ELEVATION = 5276'
PDOP = 1.3
LATITUDE = 40.018116°
LONGITUDE = -105.007601°
1200' FSL, 2391' FEL
ENTRY POINT LOCATION
SEC. 33, T1N, R68W
LATITUDE = 40.013535°
LONGITUDE = -105.009216°
464' FNL, 2488' FWL
BOTTOM HOLE LOCATION
SEC. 32, T1N, R68W
LATITUDE = 40.013497°
LONGITUDE = -105.035191°
462' FNL, 460' FWL

NOTES:

1. INDICATES SECTION CORNER
2. INDICATES CALCULATED CORNER
3. (C) INDICATES CALCULATED DIMENSION
4. ELEVATION BASED ON NAVD88 (GEOID12B)
5. BEARINGS DERIVED FROM COLORADO COORDINATE SYSTEM OF 1983 NORTH ZONE.
6. OPERATOR: TRAVIS WINNICKI
7. IMPROVEMENTS: SEE LOCATION DRAWING FOR ALL VISIBLE IMPROVEMENTS WITHIN 500' OF DISTURBED AREA.
8. WELL FOOTAGES ARE MEASURED AT RIGHT ANGLES TO THE SECTION LINES.

NEAREST CULTURAL ITEMS:


BUILDING: 1439' S
BUILDING UNIT: 1439' S
HIGH OCCUPANCY BUILDING UNIT: 4681' SW
DESIGNATED OUTSIDE ACTIVITY AREA: 5280'+
PUBLIC ROAD: WELD COUNTY ROAD 4 1240' S
ABOVE GROUND UTILITY: 1803' SE
RAILROAD: 5280'+
PROPERTY LINE: 283' W
SURFACE USE: GRASSLAND.
NEAREST EXISTING WELL: MEIKLE 28-1 645' SE



DRAWN BY	RPM	CHECKED BY	AAD
INITIAL SUBMITTAL	11/17/2017		
REVISED	5/8/2018		
DRAWING SIZE	8.5" X 11"		
JOB NO.	EXT01N68W28-01		
SHEET	1 OF 3		



Path: \\co - Well Head Staking\EXT01N68W28-01 (FRONT RANGE)\Drawings\EXT01N68W28-01 (COYOTE TRAILS) - 2 (WEST).dwg, 5/8/2018 11:06:35 AM, Danny Miller



BASLINE
Engineering - Planning - Surveying
4007 S. LINCOLN AVENUE, SUITE 405 • LOVELAND, COLORADO 80537
P. 970.353.7601 • F. 970.353.7601 • www.baselineinc.com

WELL CERTIFICATION EXHIBIT COYOTE TRAILS 33W-15-2N

SW1/4 SE1/4 SEC. 28, T1N, R68W, 6TH P.M.

NW COR. SEC. 32
FOUND #6 REB.
W/ 2-1/2" A.C.
PLS 24968

NE COR. SEC. 32
FOUND #6 REB.
W/ 2-1/2" A.C.
PLS 28656

N 1/4 COR. SEC. 32
FOUND #6 REB.
W/ 3.25" A.C.
PLS 28656

N 89°49'56" E 2622.76'

N 89°49'31" E 2622.81'

N 00°29'05" W 2641.64'

N 00°29'05" W 2641.64'

N 00°29'05" W 2641.64'

N 00°29'15" W 2641.96'

N 00°29'15" W 2641.96'

N 00°29'15" W 2641.96'

N 00°29'15" W 2641.96'

N 00°29'15" W 2641.96'

N 00°29'15" W 2641.96'

S 89°35'01" W 7277.57'

BOTTOM HOLE

N 00°43'26" W 2636.32' (C)

N 00°43'26" W 2636.32' (C)

N 00°43'26" W 2636.32' (C)

N 00°43'26" W 2636.32' (C)

N 00°43'26" W 2636.32' (C)

N 00°43'26" W 2636.32' (C)

N 00°43'26" W 2636.32' (C)

N 00°43'26" W 2636.32' (C)

S 89°44'53" W 2632.88' (C)

S 89°44'53" W 2632.88' (C)

S 89°44'53" W 2632.88' (C)

S 89°44'53" W 2632.88' (C)

S 89°44'53" W 2632.88' (C)

S 89°44'53" W 2632.88' (C)

S 89°44'53" W 2632.88' (C)

S 89°44'53" W 2632.88' (C)

S 89°44'53" W 2632.88' (C)

S 89°44'53" W 2632.88' (C)

S 89°44'53" W 2632.88' (C)

S 89°44'53" W 2632.88' (C)

S 89°44'53" W 2632.88' (C)

S 89°44'53" W 2632.88' (C)

S 89°44'53" W 2632.88' (C)

S 89°44'53" W 2632.88' (C)

S 89°44'53" W 2632.88' (C)

S 89°44'53" W 2632.88' (C)

S 89°44'53" W 2632.88' (C)

S 89°44'53" W 2632.88' (C)

S 89°44'53" W 2632.88' (C)

S 89°44'53" W 2632.88' (C)

S 89°44'53" W 2632.88' (C)

S 89°44'53" W 2632.88' (C)

S 89°44'53" W 2632.88' (C)

S 89°44'53" W 2632.88' (C)

S 89°44'53" W 2632.88' (C)

S 89°44'53" W 2632.88' (C)

S 89°44'53" W 2632.88' (C)

S 89°44'53" W 2632.88' (C)

S 89°44'53" W 2632.88' (C)

S 89°44'53" W 2632.88' (C)

S 89°44'53" W 2632.88' (C)

S 89°44'53" W 2632.88' (C)

S 89°44'53" W 2632.88' (C)

S 89°44'53" W 2632.88' (C)

S 89°44'53" W 2632.88' (C)

S 89°44'53" W 2632.88' (C)

S 89°44'53" W 2632.88' (C)

S 89°44'53" W 2632.88' (C)

S 89°44'53" W 2632.88' (C)

S 89°44'53" W 2632.88' (C)

S 89°44'53" W 2632.88' (C)

S 89°44'53" W 2632.88' (C)

S 89°44'53" W 2632.88' (C)

S 89°44'53" W 2632.88' (C)

S 89°44'53" W 2632.88' (C)

S 89°44'53" W 2632.88' (C)

S 89°44'53" W 2632.88' (C)

S 89°44'53" W 2632.88' (C)

S 89°44'53" W 2632.88' (C)

S 89°44'53" W 2632.88' (C)

S 89°44'53" W 2632.88' (C)

S 89°44'53" W 2632.88' (C)

S 89°44'53" W 2632.88' (C)

S 89°44'53" W 2632.88' (C)

S 89°44'53" W 2632.88' (C)

S 89°44'53" W 2632.88' (C)

S 89°44'53" W 2632.88' (C)

S 89°44'53" W 2632.88' (C)

S 89°44'53" W 2632.88' (C)

S 89°44'53" W 2632.88' (C)



WELL BORE
CONTINUES INTO
SECTION 33
(SHEET 2)

E 1/4 COR.
SEC. 32
FOUND #6 REB.
W/ 2" A.C.
PLS 24302

SE COR. SEC. 32
SET #6 REB.
W/ 3.25" A.C.
PLS 38285

NE COR. SEC. 5
FOUND #6 REB.
W/ 2.5" A.C.
PLS 14823

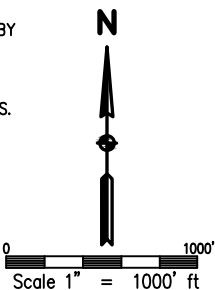
NOTES:

1.  INDICATES SECTION CORNER
2.  INDICATES CALCULATED CORNER
3. (C) INDICATES CALCULATED DIMENSION
4. ELEVATION BASED ON NAVD88 (GEOID12B)
5. BEARINGS DERIVED FROM COLORADO COORDINATE SYSTEM OF 1983 NORTH ZONE.
6. OPERATOR: TRAVIS WINNICKI
7. IMPROVEMENTS: SEE LOCATION DRAWING FOR ALL VISIBLE IMPROVEMENTS WITHIN 500' OF DISTURBED AREA.
8. WELL FOOTAGES ARE MEASURED AT RIGHT ANGLES TO THE SECTION LINES.

SURFACE LOCATION
SEC. 28, T1N, R68W
GROUND ELEVATION = 5276'
PDOP = 1.3
LATITUDE = 40.018116°
LONGITUDE = -105.007601°
1200' FSL, 2391' FEL
ENTRY POINT LOCATION
SEC. 33, T1N, R68W
LATITUDE = 40.013535°
LONGITUDE = -105.009216°
464' FNL, 2488' FWL
BOTTOM HOLE LOCATION
SEC. 32, T1N, R68W
LATITUDE = 40.013497°
LONGITUDE = -105.035191°
462' FNL, 460' FWL

I HEREBY CERTIFY THAT THIS WELL LOCATION CERTIFICATE WAS PREPARED BY ME, OR UNDER MY DIRECT SUPERVISION, THAT THE FIELD WORK WAS COMPLETED ON 06/30/2017, THAT IT IS NOT A LAND SURVEY PLAT OR AN IMPROVEMENT SURVEY PLAT, AND THAT IT IS NOT TO BE RELIED UPON FOR ESTABLISHMENT OF FENCE, BUILDING OR OTHER FUTURE IMPROVEMENT LINES.

AARON A. DEMO
Professional Land Surveyor Registration No. 38285
State of Colorado
FOR AND ON BEHALF OF BASELINE ENGINEERING CORP.

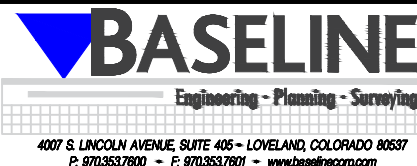


NEAREST CULTURAL ITEMS:

BUILDING: 1439' S
BUILDING UNIT: 1439' S
HIGH OCCUPANCY BUILDING UNIT: 4681' SW
DESIGNATED OUTSIDE ACTIVITY AREA: 5280' +
PUBLIC ROAD: WELD COUNTY ROAD 4 1240' S
ABOVE GROUND UTILITY: 1803' SE
RAILROAD: 5280' +
PROPERTY LINE: 283' W
SURFACE USE: GRASSLAND.
NEAREST EXISTING WELL: MEIKLE 28-1 645' SE



DRAWN BY	RPM
CHECKED BY	AAD
INITIAL SUBMITTAL	11/17/2017
REVISED	5/8/2018
DRAWING SIZE	8.5" X 11"
JOB NO.	EXT01N68W28-01
SHEET	3 of 3



4007 S. LINCOLN AVENUE, SUITE 405 - LOVELAND, COLORADO 80537
P: 970.353.7800 - F: 970.353.7801 - www.baselinecorp.com