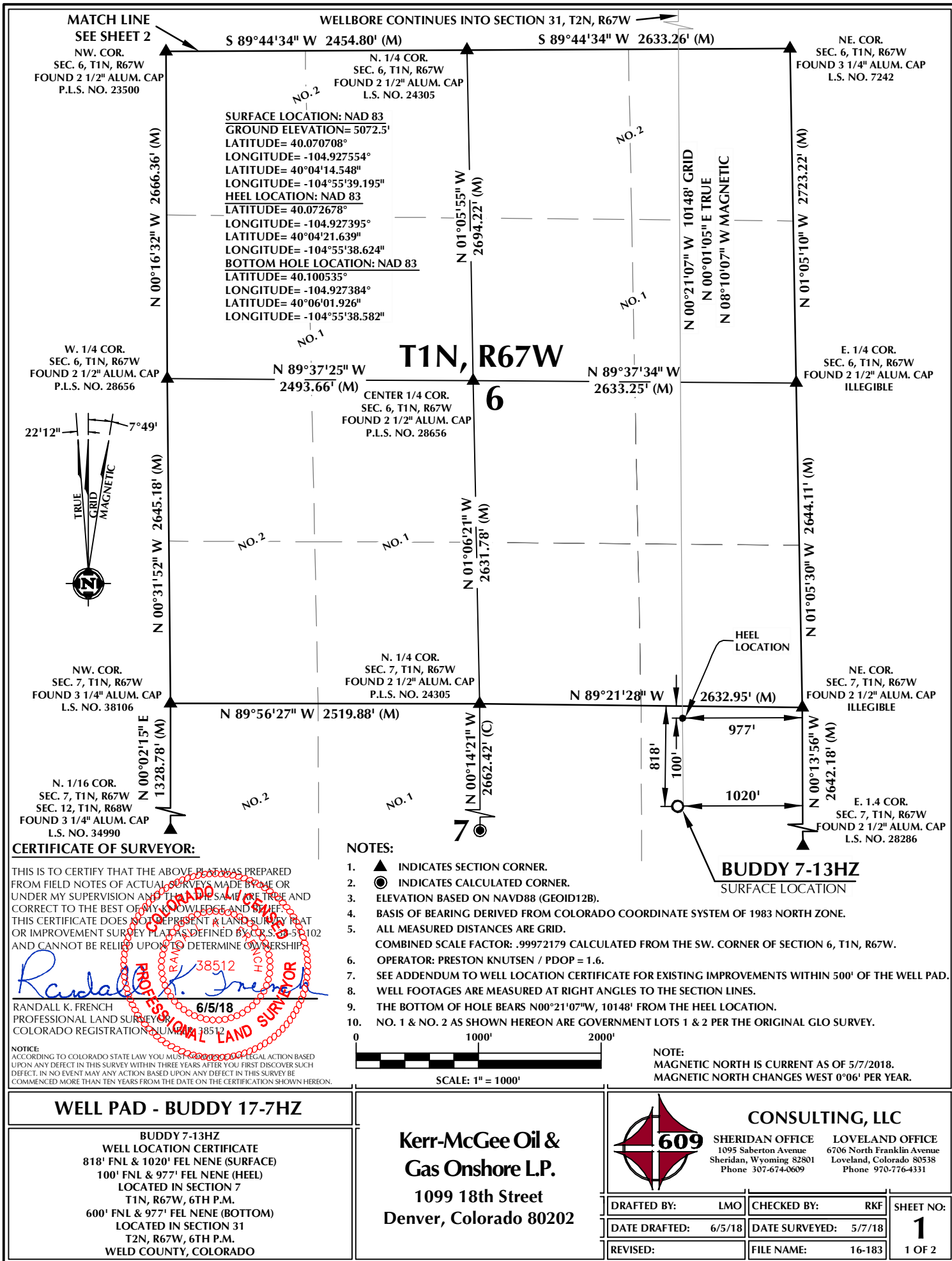


K:\JAMARCO (2016)\2016_183_LANDON.T1N.R67W_SEC.6\PLATS\BUDDY 17-7HZ\BUDDY 17-7HZ.DWG, 6/4/2018 2:53:19 PM, lba



T2N, R67W

E. 1/16 COR.
SEC. 30 & SEC. 31, T2N, R67W
FOUND 2 1/2" ALUM. CAP
L.S. NO. 24305

NW. COR.
SEC. 31, T2N, R67W
FOUND 3 1/4" ALUM. CAP
L.S. NO. 37946

S 89°56'08" W
1316.55' (M)

S 89°56'13" W
1316.62' (M)

NE. COR.
SEC. 31, T2N, R67W
FOUND 3 1/4" BLM
BRASS CAP

N. 1/4 COR.
SEC. 31, T2N, R67W
FOUND 3 1/4" BLM
BRASS CAP

BOTTOM OF HOLE:
600' FNL & 977' FEL

N 00°29'48" E
1323.34' (M)

N. 1/16 COR.
SEC. 31 & SEC. 32
T2N, R67W
FOUND 2 1/2" ALUM. CAP
P.L.S. NO. 24305

N 00°29'00" E
1323.22' (M)

E. 1/4 COR.
SEC. 31, T2N, R67W
FOUND 2" ALUM. CAP
ILLEGIBLE

N 00°28'50" E 2646.94' (M)

SE. COR.
SEC. 31, T2N, R67W
FOUND 3 1/4" ALUM. CAP
L.S. NO. 7242

S 89°44'34" W 2633.26' (M)

S. 1/4 COR.
SEC. 31, T2N, R67W
FOUND 2 1/2" ALUM. CAP
L.S. NO. 24305

SURFACE LOCATION: NAD 83
GROUND ELEVATION= 5072.5'
LATITUDE= 40.070708°
LONGITUDE= -104.927554°
LATITUDE= 40°04'14.548"
LONGITUDE= -104°55'39.195"
HEEL LOCATION: NAD 83
LATITUDE= 40.072678°
LONGITUDE= -104.927395°
LATITUDE= 40°04'21.639"
LONGITUDE= -104°55'38.624"
BOTTOM HOLE LOCATION: NAD 83
LATITUDE= 40.100535°
LONGITUDE= -104.927384°
LATITUDE= 40°06'01.926"
LONGITUDE= -104°55'38.582"

S 89°44'34" W 2454.80' (M)

W. 1/4 COR.
SEC. 31, T2N, R67W
SET 2 1/2" ALUM. CAP
W.C. 30' EAST OF TRUE
CORNER POSITION
P.L.S. NO. 38512

S 89°51'54" W
2476.61' (M)

S 89°51'12" W
2632.72' (M)

N 00°06'53" W 2655.32' (M)

N 00°01'09" E 2657.11' (M)

N 00°28'46" E
2650.37' (M)

N 00°29'27" E
2652.02' (M)

N 00°21'07" W 10148' GRID
N 00°01'05" E TRUE
N 08°10'07" W MAGNETIC

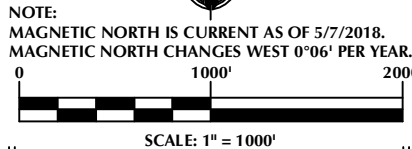
MATCH LINE
SEE SHEET 1

CERTIFICATE OF SURVEYOR:

THIS IS TO CERTIFY THAT THE ABOVE PLAT WAS PREPARED FROM FIELD NOTES OF ACTUAL SURVEYS MADE BY ME OR UNDER MY SUPERVISION AND THAT THE SAME ARE TRUE AND CORRECT TO THE BEST OF MY KNOWLEDGE AND BELIEF. THIS CERTIFICATE DOES NOT REPRESENT A LAND SURVEY PLAT OR IMPROVEMENT SURVEY PLAT AS DEFINED BY C.R.S. 38-5-102 AND CANNOT BE RELIED UPON TO DETERMINE OWNERSHIP.

Randall K. French
6/5/18
PROFESSIONAL LAND SURVEYOR
COLORADO REGISTRATION NUMBER 38512

NOTICE:
ACCORDING TO COLORADO STATE LAW YOU MUST COMMENCE LEGAL ACTION BASED UPON ANY DEFECT IN THIS SURVEY WITHIN THREE YEARS AFTER YOU FIRST DISCOVER SUCH DEFECT. IN NO EVENT MAY ANY ACTION BASED UPON ANY DEFECT IN THIS SURVEY BE COMMENCED MORE THAN TEN YEARS FROM THE DATE ON THE CERTIFICATION SHOWN HEREON.



NOTES:

- ▲ INDICATES SECTION CORNER.
- INDICATES CALCULATED CORNER.
- ELEVATION BASED ON NAVD88 (GEOID12B).
- BASIS OF BEARING DERIVED FROM COLORADO COORDINATE SYSTEM OF 1983 NORTH ZONE.
- ALL MEASURED DISTANCES ARE GRID.
COMBINED SCALE FACTOR: .99972179 CALCULATED FROM THE SW. CORNER OF SECTION 6, T1N, R67W.
OPERATOR: PRESTON KNUITSEN / PDOP = 1.6.
- SEE ADDENDUM TO WELL LOCATION CERTIFICATE FOR EXISTING IMPROVEMENTS WITHIN 500' OF THE WELL PAD.
- WELL FOOTAGES ARE MEASURED AT RIGHT ANGLES TO THE SECTION LINES.
- THE BOTTOM OF HOLE BEARS N00°21'07"W, 10148' FROM THE HEEL LOCATION.
- NO. 1 & NO. 2 AS SHOWN HEREON ARE GOVERNMENT LOTS 1 & 2 PER THE ORIGINAL GLO SURVEY.

WELL PAD - BUDDY 17-7HZ

BUDDY 7-13HZ
WELL LOCATION CERTIFICATE
818' FNL & 1020' FEL NENE (SURFACE)
100' FNL & 977' FEL NENE (HEEL)
LOCATED IN SECTION 7
T1N, R67W, 6TH P.M.
600' FNL & 977' FEL NENE (BOTTOM)
LOCATED IN SECTION 31
T2N, R67W, 6TH P.M.
WELD COUNTY, COLORADO

Kerr-McGee Oil &
Gas Onshore L.P.
1099 18th Street
Denver, Colorado 80202

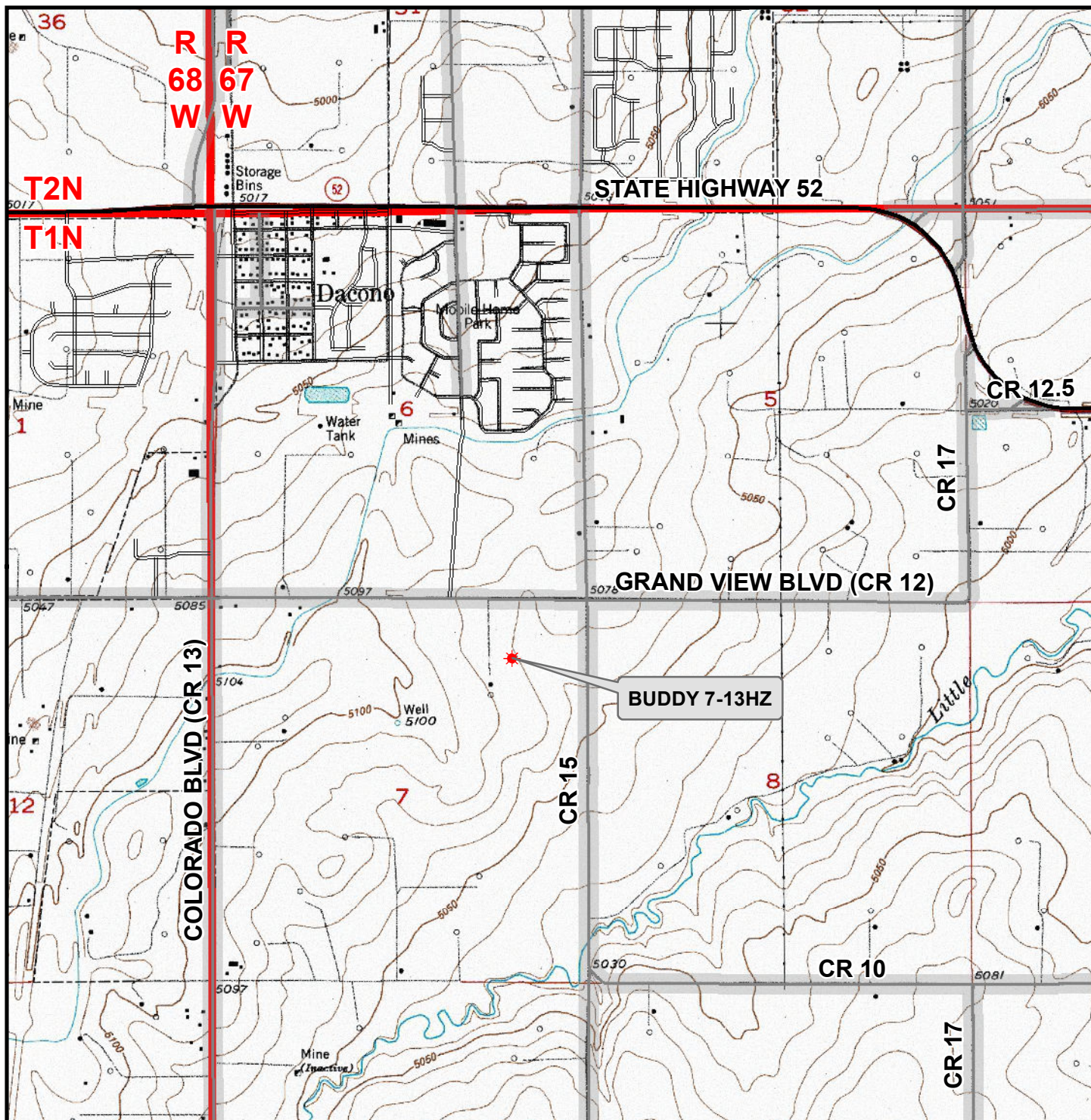


CONSULTING, LLC

SHERIDAN OFFICE
1095 Saberton Avenue
Sheridan, Wyoming 82801
Phone 307-674-0609

LOVELAND OFFICE
6706 North Franklin Avenue
Loveland, Colorado 80538
Phone 970-776-4331

DRAFTED BY:	LMO	CHECKED BY:	RKF	SHEET NO:
DATE DRAFTED:	6/5/18	DATE SURVEYED:	5/7/18	2
REVISED:		FILE NAME:	16-183	2 OF 2



Legend

- ★ Well - Fee - Proposed
 Road - Primitive - Existing
 Road - County - Existing
 Road - Improved - Existing
 Road - Highway - Existing

WELL PAD - BUDDY 17-7HZ
GENERAL LOCATION MAP
BUDDY 7-13HZ
LOCATED IN SECTION 7
T1N, R67W, 6th P.M.
WELD COUNTY, COLORADO

**Kerr-McGee Oil &
Gas Onshore L.P.**

1099 18th Street
 Denver, Colorado 80202



CONSULTING, LLC

SHERIDAN OFFICE
 1095 Saberton Avenue
 Sheridan, Wyoming 82801
 Phone 307-674-0609

LOVELAND OFFICE
 6706 North Franklin Avenue
 Loveland, Colorado 80538
 Phone 970-776-4331



SCALE: 1" = 2,000ft

NAD83 CO-Nft

DRAWN: DP

DATE: 5 Jun 2018

REVISED:

DATE: