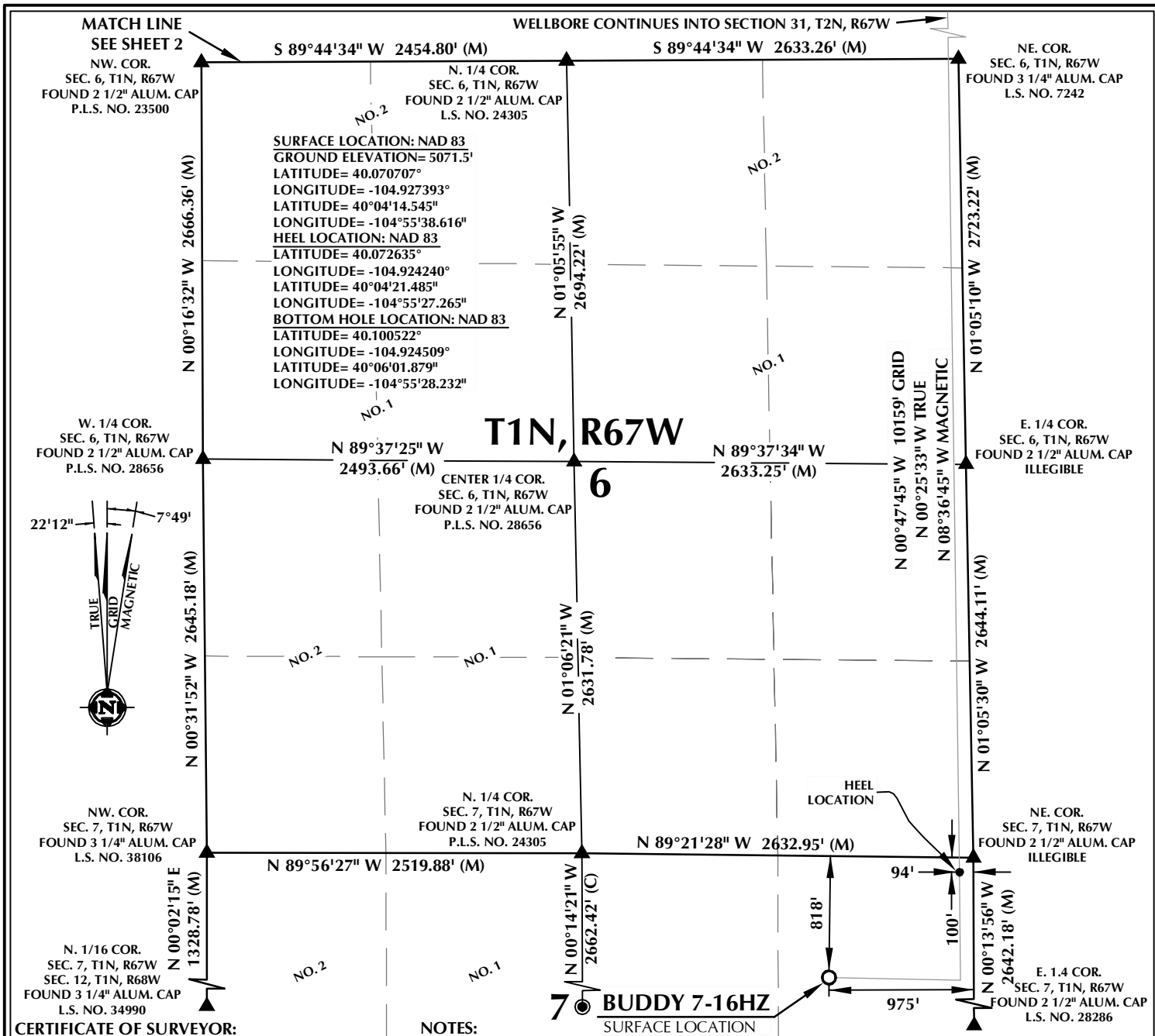


K:\JAMARKO (2016)\2016\_183\_LANDON.T1N.R67W\_SEC.6\PLATS\BUDDY 17-7HZ\BUDDY 17-7HZ PLAT.dwg, 6/4/2018 2:53:27 PM, lba



## WELL PAD - BUDDY 17-7HZ

**BUDDY 7-16HZ**  
WELL LOCATION CERTIFICATE  
818' FNL & 975' FEL NENE (SURFACE)  
100' FNL & 94' FEL NENE (HEEL)  
LOCATED IN SECTION 7  
T1N, R67W, 6TH P.M.  
600' FNL & 172' FEL NENE (BOTTOM)  
LOCATED IN SECTION 31  
T2N, R67W, 6TH P.M.  
WELD COUNTY, COLORADO

**Kerr-McGee Oil &  
Gas Onshore L.P.**  
1099 18th Street  
Denver, Colorado 80202



## CONSULTING, LLC

**SHERIDAN OFFICE**  
1095 Saberton Avenue  
Sheridan, Wyoming 82801  
Phone 307-674-0609

**LOVELAND OFFICE**  
6706 North Franklin Avenue  
Loveland, Colorado 80538  
Phone 970-776-4331

DRAFTED BY:	LMO	CHECKED BY:	RKF	SHEET NO:
DATE DRAFTED:	6/5/18	DATE SURVEYED:	5/7/18	1
REVISED:		FILE NAME:	16-183	1 OF 2

T2N, R67W

E. 1/16 COR.  
SEC. 30 & SEC. 31, T2N, R67W  
FOUND 2 1/2" ALUM. CAP  
L.S. NO. 24305

NW. COR.  
SEC. 31, T2N, R67W  
FOUND 3 1/4" ALUM. CAP  
L.S. NO. 37946

S 89°56'08" W  
1316.55' (M)

S 89°56'13" W  
1316.62' (M)

NE. COR.  
SEC. 31, T2N, R67W  
FOUND 3 1/4" BLM  
BRASS CAP

N. 1/4 COR.  
SEC. 31, T2N, R67W  
FOUND 3 1/4" BLM  
BRASS CAP

600'  
172'

BOTTOM OF HOLE:  
600' FNL & 172' FEL

N 00°29'48" E  
1323.34' (M)

N. 1/16 COR.  
SEC. 31 & SEC. 32  
T2N, R67W  
FOUND 2 1/2" ALUM. CAP  
P.L.S. NO. 24305

N 00°29'00" E  
1323.22' (M)

E. 1/4 COR.  
SEC. 31, T2N, R67W  
FOUND 2" ALUM. CAP  
ILLEGIBLE

N 00°28'50" E 2646.94' (M)

SE. COR.  
SEC. 31, T2N, R67W  
FOUND 3 1/4" ALUM. CAP  
L.S. NO. 7242

S 89°51'12" W  
2632.72' (M)

31

S 89°51'54" W  
2476.61' (M)

SURFACE LOCATION: NAD 83  
GROUND ELEVATION= 5071.5'  
LATITUDE= 40.070707°  
LONGITUDE= -104.927393°  
LATITUDE= 40°04'14.545"  
LONGITUDE= -104°55'38.616"  
HEEL LOCATION: NAD 83  
LATITUDE= 40.072635°  
LONGITUDE= -104.924240°  
LATITUDE= 40°04'21.485"  
LONGITUDE= -104°55'27.265"  
BOTTOM HOLE LOCATION: NAD 83  
LATITUDE= 40.100522°  
LONGITUDE= -104.924509°  
LATITUDE= 40°06'01.879"  
LONGITUDE= -104°55'28.232"

S. 1/4 COR.  
SEC. 31, T2N, R67W  
FOUND 2 1/2" ALUM. CAP  
L.S. NO. 24305

S 89°44'34" W 2454.80' (M)

S 89°44'34" W 2633.26' (M)

MATCH LINE  
SEE SHEET 1

#### CERTIFICATE OF SURVEYOR:

THIS IS TO CERTIFY THAT THE ABOVE PLAT WAS PREPARED FROM FIELD NOTES OF ACTUAL SURVEYS MADE BY ME OR UNDER MY SUPERVISION AND THAT THE SAME ARE TRUE AND CORRECT TO THE BEST OF MY KNOWLEDGE AND BELIEF. THIS CERTIFICATE DOES NOT REPRESENT A LAND SURVEY PLAT OR IMPROVEMENT SURVEY PLAT AS DEFINED BY C.R.S. 38-5-102 AND CANNOT BE RELIED UPON TO DETERMINE OWNERSHIP.

*Randall K. French*  
6/5/18  
PROFESSIONAL LAND SURVEYOR  
COLORADO REGISTRATION NUMBER 38512

RANDALL K. FRENCH  
PROFESSIONAL LAND SURVEYOR  
COLORADO REGISTRATION NUMBER 38512

NOTICE:  
ACCORDING TO COLORADO STATE LAW YOU MUST COMMENCE LEGAL ACTION BASED UPON ANY DEFECT IN THIS SURVEY WITHIN THREE YEARS AFTER YOU FIRST DISCOVER SUCH DEFECT. IN NO EVENT MAY ANY ACTION BASED UPON ANY DEFECT IN THIS SURVEY BE COMMENCED MORE THAN TEN YEARS FROM THE DATE ON THE CERTIFICATION SHOWN HEREON.

22'12" 7°49'



NOTE:  
MAGNETIC NORTH IS CURRENT AS OF 5/7/2018.  
MAGNETIC NORTH CHANGES WEST 0°06' PER YEAR.

SCALE: 1" = 1000'

#### NOTES:

- ▲ INDICATES SECTION CORNER.
- INDICATES CALCULATED CORNER.
- ELEVATION BASED ON NAVD88 (GEOID12B).
- BASIS OF BEARING DERIVED FROM COLORADO COORDINATE SYSTEM OF 1983 NORTH ZONE.
- ALL MEASURED DISTANCES ARE GRID.  
COMBINED SCALE FACTOR: .99972179 CALCULATED FROM THE SW. CORNER OF SECTION 6, T1N, R67W.  
OPERATOR: PRESTON KNUITSEN / PDOP = 2.5.
- SEE ADDENDUM TO WELL LOCATION CERTIFICATE FOR EXISTING IMPROVEMENTS WITHIN 500' OF THE WELL PAD.
- WELL FOOTAGES ARE MEASURED AT RIGHT ANGLES TO THE SECTION LINES.
- THE BOTTOM OF HOLE BEARS N00°47'45"W, 10159' FROM THE HEEL LOCATION.
- NO. 1 & NO. 2 AS SHOWN HEREON ARE GOVERNMENT LOTS 1 & 2 PER THE ORIGINAL GLO SURVEY.

#### WELL PAD - BUDDY 17-7HZ

BUDDY 7-16HZ  
WELL LOCATION CERTIFICATE  
818' FNL & 975' FEL NENE (SURFACE)  
100' FNL & 94' FEL NENE (HEEL)  
LOCATED IN SECTION 7  
T1N, R67W, 6TH P.M.  
600' FNL & 172' FEL NENE (BOTTOM)  
LOCATED IN SECTION 31  
T2N, R67W, 6TH P.M.  
WELD COUNTY, COLORADO

Kerr-McGee Oil &  
Gas Onshore L.P.  
1099 18th Street  
Denver, Colorado 80202



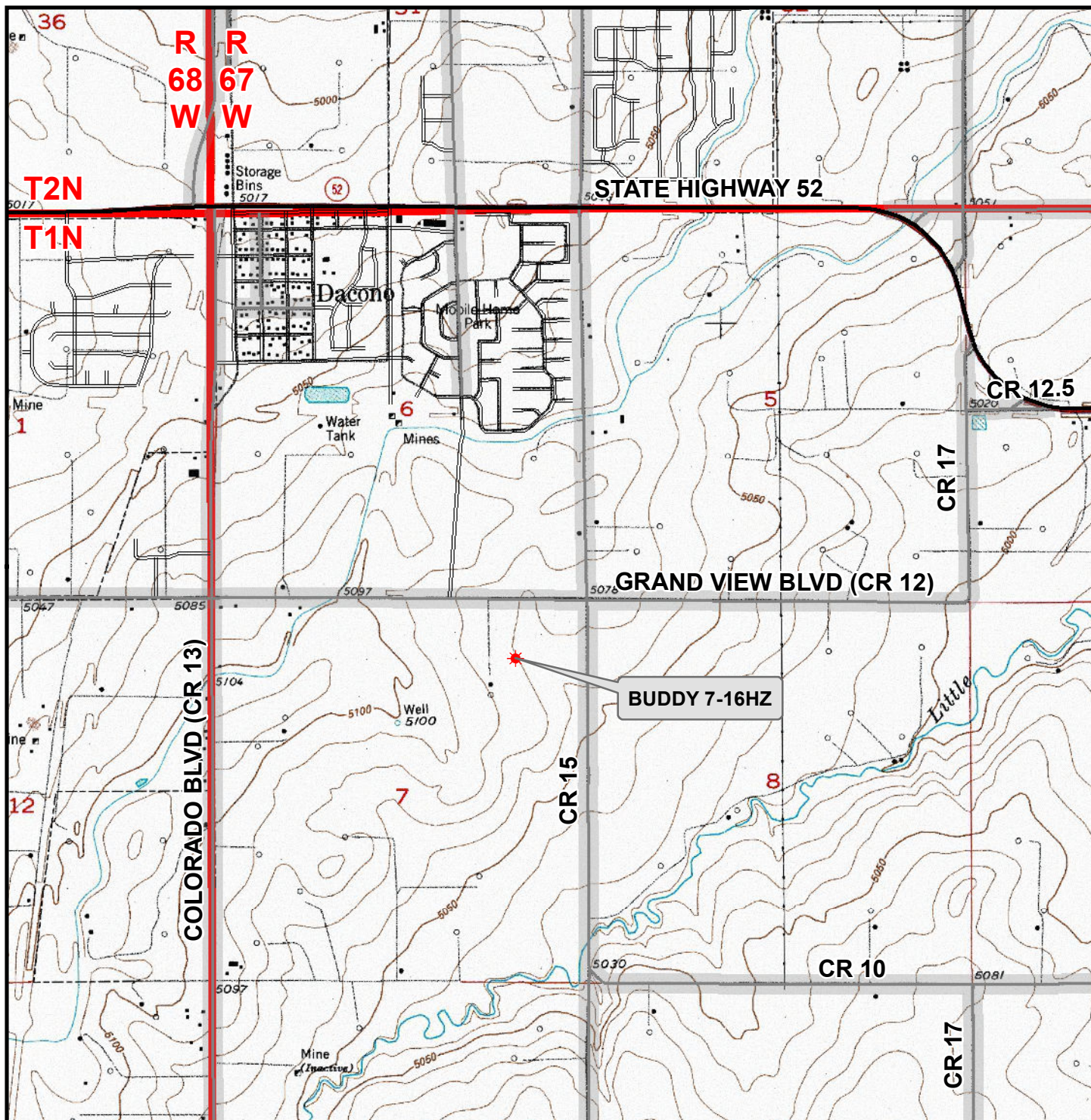
#### CONSULTING, LLC

SHERIDAN OFFICE  
1095 Saberton Avenue  
Sheridan, Wyoming 82801  
Phone 307-674-0609

LOVELAND OFFICE  
6706 North Franklin Avenue  
Loveland, Colorado 80538  
Phone 970-776-4331

DRAFTED BY:	LMO	CHECKED BY:	RKF	SHEET NO:
DATE DRAFTED:	6/5/18	DATE SURVEYED:	5/7/18	2
REVISED:		FILE NAME:	16-183	2 OF 2





### Legend

- ★ Well - Fee - Proposed   
  Road - Primitive - Existing   
  Road - County - Existing  
 Road - Improved - Existing   
 Road - Highway - Existing

**WELL PAD - BUDDY 17-7HZ**  
**GENERAL LOCATION MAP**  
**BUDDY 7-16HZ**  
**LOCATED IN SECTION 7**  
**T1N, R67W, 6th P.M.**  
**WELD COUNTY, COLORADO**

**Kerr-McGee Oil &  
Gas Onshore L.P.**

1099 18th Street  
 Denver, Colorado 80202



**CONSULTING, LLC**

SHERIDAN OFFICE  
 1095 Saberton Avenue  
 Sheridan, Wyoming 82801  
 Phone 307-674-0609

LOVELAND OFFICE  
 6706 North Franklin Avenue  
 Loveland, Colorado 80538  
 Phone 970-776-4331



SCALE: 1" = 2,000ft

NAD83 CO-Nft

DRAWN: DP

DATE: 5 Jun 2018

REVISED:

DATE: