



Kerr-McGee Oil & Gas Onshore LP

A subsidiary of Anadarko Petroleum Corporation

1099 18th Street
Denver, CO 80202
720-929-6000

August 13, 2018

Julie Murphy
Director, Colorado Oil and Gas Conservation Commission
Department of Natural Resources - The Chancery Building
1120 Lincoln Street, Suite 801
Denver, CO 80203

Re: **30 Day Certification Letter - 318A.e**
BUDDY 7-15HZ (Doc No. 401679528)
Township 1 North, Range 67 West
Section 7: E2NE
Unit Acreage: 720 Acres
Proposed Spacing Unit:
01N67W SEC 05: W2W2;
01N67W SEC 06: E2E2;
01N67W SEC 07: NENE;
01N67W SEC 08: NWNW;
02N67W SEC 31: E2E2;
02N67W SEC 32: W2W2
Weld County, Colorado

Dear Director Murphy:

Kerr-McGee Oil and Gas Onshore LP ("KMG") hereby certifies that a thirty (30) day notice has been given by certified mail to all mineral owners in the proposed wellbore spacing unit. We have not received any objections to such well location, proposed spacing unit, or additional producing formation. KMG hereby respectfully requests approval of this boundary well.

If there are any questions or issues regarding this permit, please contact John Piekara at (720) 929-3094.

Sincerely,

Kerr-McGee Oil & Gas Onshore LP

A handwritten signature in black ink, appearing to read 'John Piekara', written over a horizontal line.

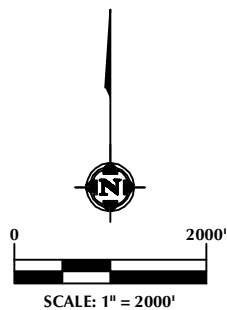
John Piekara
Sr. Regulatory Analyst

Enclosure

DISTANCE FROM COMPLETED
PORTION OF WELLBORE TO
NEAREST UNIT BOUNDARY= 600'

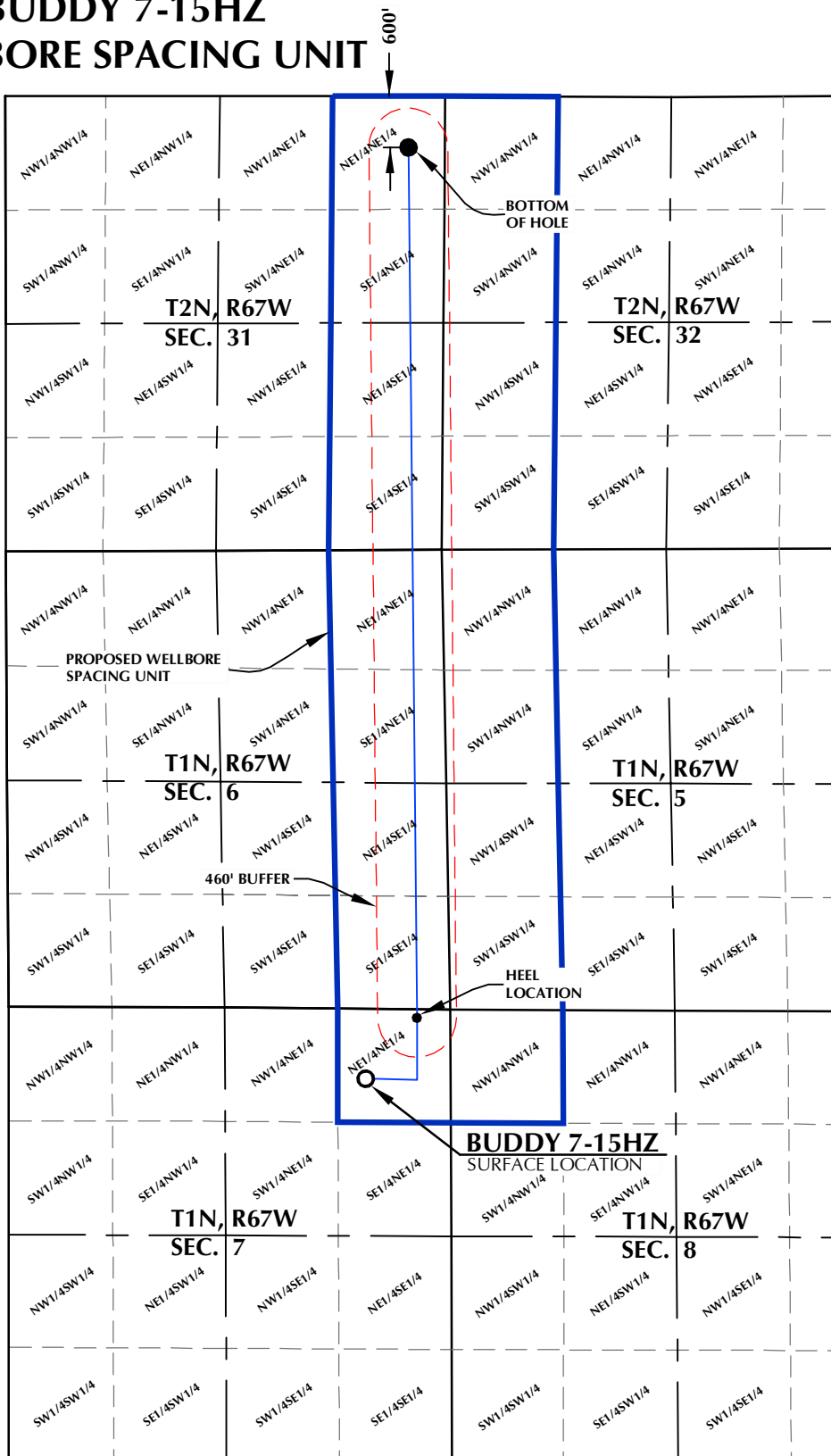
BUDDY 7-15HZ WELLBORE SPACING UNIT

SURFACE LOCATION: NAD 83
GROUND ELEVATION= 5071.7'
LATITUDE= 40.070707°
LONGITUDE= -104.927447°
LATITUDE= 40°04'14.546"
LONGITUDE= -104°55'38.809"
HEEL LOCATION: NAD 83
LATITUDE= 40.072649°
LONGITUDE= -104.925291°
LATITUDE= 40°04'21.537"
LONGITUDE= -104°55'31.047"
BOTTOM HOLE LOCATION: NAD 83
LATITUDE= 40.100526°
LONGITUDE= -104.925414°
LATITUDE= 40°06'01.894"
LONGITUDE= -104°55'31.490"



NOTES:

1. DRAWING LATITUDE AND LONGITUDE COORDINATES ARE NAD 83 (2011)(EPOCH:2010).
2. ELEVATION BASED ON NAVD88 (GEOID12B).
3. BASIS OF BEARING DERIVED FROM COLORADO COORDINATE SYSTEM OF 1983 NORTH ZONE.
4. ALL MEASURED DISTANCES ARE GRID. COMBINED SCALE FACTOR: .99972179 CALCULATED FROM THE SW. CORNER OF SECTION 6, T1N, R67W.



WELL PAD - BUDDY 17-7HZ

BUDDY 7-15HZ
WELLBORE SPACING UNIT
818' FNL & 990' FEL NENE (SURFACE)
100' FNL & 388' FEL NENE (HEEL)
LOCATED IN SECTION 7
T1N, R67W, 6TH P.M.
600' FNL & 425' FEL NENE (BOTTOM)
LOCATED IN SECTION 31
T2N, R67W, 6TH P.M.
WELD COUNTY, COLORADO

**Kerr-McGee Oil &
Gas Onshore L.P.**
1099 18th Street
Denver, Colorado 80202



CONSULTING, LLC

SHERIDAN OFFICE
1095 Saberton Avenue
Sheridan, Wyoming 82801
Phone 307-674-0609

LOVELAND OFFICE
6706 North Franklin Avenue
Loveland, Colorado 80538
Phone 970-776-4331

DRAFTED BY:	LMO	CHECKED BY:	RKF
DATE DRAFTED:	6/5/18	DATE SURVEYED:	5/7/18
REVISED:		FILE NAME:	16-183