



# Kerr-McGee Oil & Gas Onshore LP

A subsidiary of Anadarko Petroleum Corporation

1099 18<sup>th</sup> Street  
Denver, CO 80202  
720-929-6000

August 13, 2018

Julie Murphy  
Director, Colorado Oil and Gas Conservation Commission  
Department of Natural Resources - The Chancery Building  
1120 Lincoln Street, Suite 801  
Denver, CO 80203

Re: **30 Day Certification Letter - 318A.e**  
BUDDY 7-14HZ (Doc No. 401679527)  
Township 1 North, Range 67 West  
Section 7: E2NE  
Unit Acreage: 360 Acres  
Proposed Spacing Unit:  
01N67W SEC 06: E2E2;  
01N67W SEC 07: NENE;  
02N67W SEC 31: E2E2  
Weld County, Colorado

Dear Director Murphy:

Kerr-McGee Oil and Gas Onshore LP ("KMG") hereby certifies that a thirty (30) day notice has been given by certified mail to all mineral owners in the proposed wellbore spacing unit. We have not received any objections to such well location, proposed spacing unit, or additional producing formation. KMG hereby respectfully requests approval of this boundary well.

If there are any questions or issues regarding this permit, please contact John Piekara at (720) 929-3094.

Sincerely,

**Kerr-McGee Oil & Gas Onshore LP**

A handwritten signature in black ink, appearing to read 'John Piekara', written over a horizontal line.

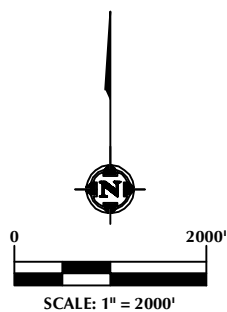
John Piekara  
Sr. Regulatory Analyst

Enclosure

DISTANCE FROM COMPLETED  
PORTION OF WELLBORE TO  
NEAREST UNIT BOUNDARY= 585'

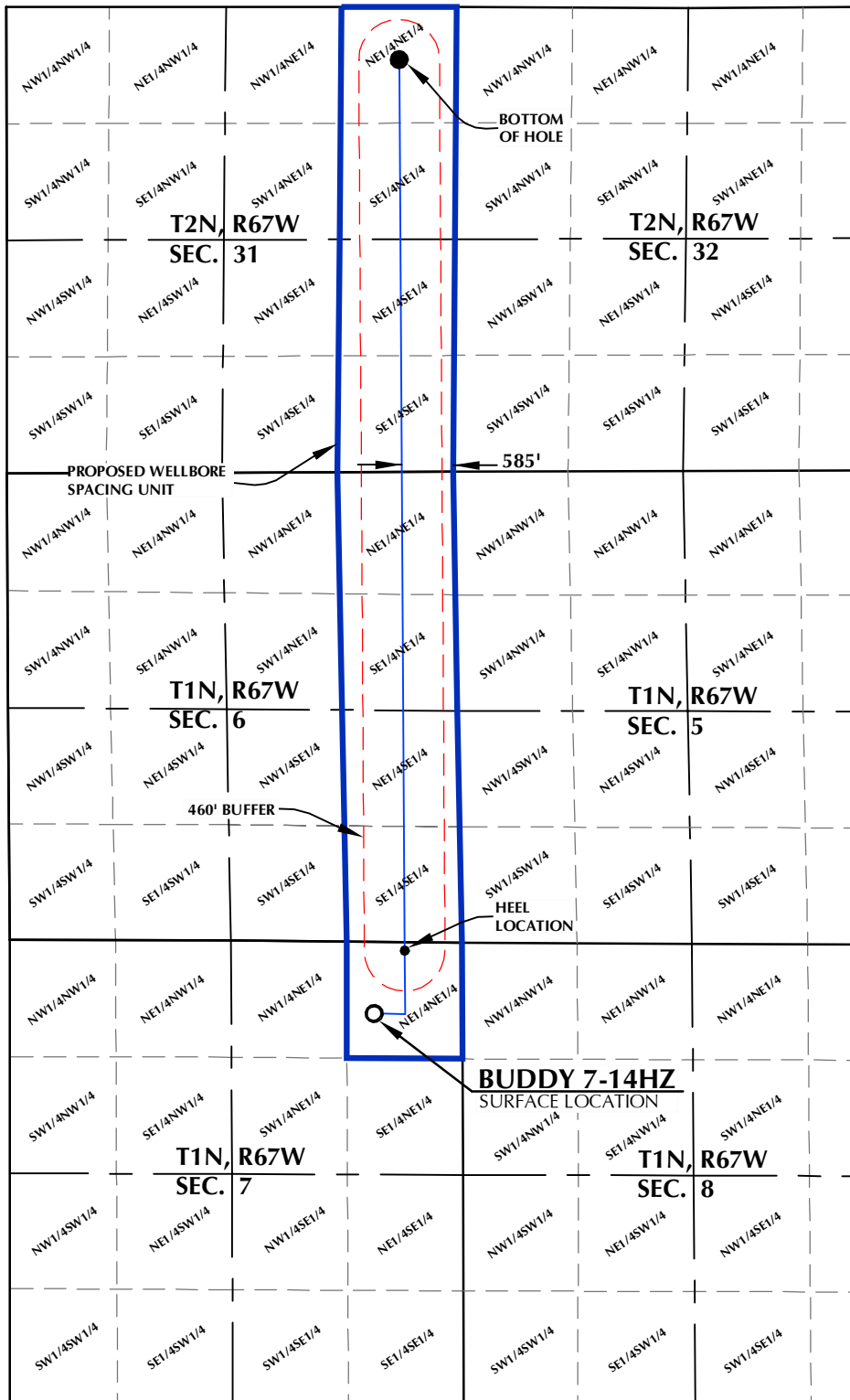
# BUDDY 7-14HZ WELLBORE SPACING UNIT

**SURFACE LOCATION: NAD 83**  
GROUND ELEVATION= 5072.1'  
LATITUDE= 40.070707°  
LONGITUDE= -104.927500°  
LATITUDE= 40°04'14.547"  
LONGITUDE= -104°55'39.002"  
**HEEL LOCATION: NAD 83**  
LATITUDE= 40.072662°  
LONGITUDE= -104.926238°  
LATITUDE= 40°04'21.583"  
LONGITUDE= -104°55'34.456"  
**BOTTOM HOLE LOCATION: NAD 83**  
LATITUDE= 40.100529°  
LONGITUDE= -104.926229°  
LATITUDE= 40°06'01.904"  
LONGITUDE= -104°55'34.424"



## NOTES:

1. DRAWING LATITUDE AND LONGITUDE COORDINATES ARE NAD 83 (2011)(EPOCH:2010).
2. ELEVATION BASED ON NAVD88 (GEOID12B).
3. BASIS OF BEARING DERIVED FROM COLORADO COORDINATE SYSTEM OF 1983 NORTH ZONE.
4. ALL MEASURED DISTANCES ARE GRID. COMBINED SCALE FACTOR: .99972179 CALCULATED FROM THE SW. CORNER OF SECTION 6, T1N, R67W.



## WELL PAD - BUDDY 17-7HZ

**BUDDY 7-14HZ**  
WELLBORE SPACING UNIT  
818' FNL & 1005' FEL NENE (SURFACE)  
100' FNL & 653' FEL NENE (HEEL)  
LOCATED IN SECTION 7  
T1N, R67W, 6TH P.M.  
600' FNL & 653' FEL NENE (BOTTOM)  
LOCATED IN SECTION 31  
T2N, R67W, 6TH P.M.  
WELD COUNTY, COLORADO

**Kerr-McGee Oil &  
Gas Onshore L.P.**  
1099 18th Street  
Denver, Colorado 80202



## CONSULTING, LLC

**SHERIDAN OFFICE**  
1095 Saberton Avenue  
Sheridan, Wyoming 82801  
Phone 307-674-0609

**LOVELAND OFFICE**  
6706 North Franklin Avenue  
Loveland, Colorado 80538  
Phone 970-776-4331

DRAFTED BY:	LMO	CHECKED BY:	RKF
DATE DRAFTED:	6/5/18	DATE SURVEYED:	5/7/18
REVISED:		FILE NAME:	16-183