

LEGEND:

- = 90° SYMBOL
● = PROPOSED WELLHEAD.
◆ = PRODUCTION INTERVAL.
○ = TARGET BOTTOM HOLE.
▲ = SECTION CORNERS LOCATED. (NAD 83)

T8N, R60W, 6th P.M.

LINE TABLE		
LINE	DIRECTION	LENGTH
L1	S59°49'46"E	550.22'
L2	S01°01'32"W	300.07'
L3	N01°00'12"E	100.02'

SURFACE LOCATION 2366' FNL 2335' FEL
NAD 83 (SURFACE LOCATION)
LATITUDE = 40°39'47.04" (40.663067)
LONGITUDE = 104°06'50.93" (104.114147)
NAD 27 (SURFACE LOCATION)
LATITUDE = 40°39'47.09" (40.663081)
LONGITUDE = 104°06'49.12" (104.113644)
STATE PLANE NAD 83 (CO. NORTH)
N: 1487401.80 E: 3384460.73
STATE PLANE NAD 27 (CO. NORTH)
N: 487400.66 E: 2384610.85
BEG. PROD. INTERVAL 2346' FSL 3431' FWL 1855' FEL
NAD 83 (BEG. PROD. INTERVAL)
LATITUDE = 40°39'41.34" (40.661483)
LONGITUDE = 104°06'44.84" (104.112454)
NAD 27 (BEG. PROD. INTERVAL)
LATITUDE = 40°39'41.39" (40.661497)
LONGITUDE = 104°06'43.02" (104.111950)
STATE PLANE NAD 83 (CO. NORTH)
N: 1486832.55 E: 3384939.56
STATE PLANE NAD 27 (CO. NORTH)
N: 486831.41 E: 2385089.70
ENDING PROD. INTERVAL 300' FSL 3431' FWL 1841' FEL
NAD 83 (ENDING PROD. INTERVAL)
LATITUDE = 40°38'28.84" (40.641345)
LONGITUDE = 104°06'46.59" (104.112943)
NAD 27 (ENDING PROD. INTERVAL)
LATITUDE = 40°38'28.89" (40.641359)
LONGITUDE = 104°06'44.78" (104.112438)
STATE PLANE NAD 83 (CO. NORTH)
N: 1479494.62 E: 3384918.79
STATE PLANE NAD 27 (CO. NORTH)
N: 479493.62 E: 2385069.03
TARGET BOTTOM HOLE 200' FSL 3431' FWL 1841' FEL
NAD 83 (TARGET BOTTOM HOLE)
LATITUDE = 40°38'27.85" (40.641070)
LONGITUDE = 104°06'46.62" (104.112949)
NAD 27 (TARGET BOTTOM HOLE)
LATITUDE = 40°38'27.90" (40.641085)
LONGITUDE = 104°06'44.80" (104.112445)
STATE PLANE NAD 83 (CO. NORTH)
N: 1479394.63 E: 3384918.55
STATE PLANE NAD 27 (CO. NORTH)
N: 479393.62 E: 2385068.79

PDOP = 1.2



BASIS OF BEARINGS

BASIS OF BEARINGS IS A G.P.S. OBSERVATION

BASIS OF ELEVATION

SPOT ELEVATION LOCATED AT THE NORTHEAST CORNER OF SECTION 2, T9N, R61W, 6th P.M., TAKEN FROM THE GROVER SOUTH, QUADRANGLE, COLORADO, WELD COUNTY, 7.5 MINUTE QUAD (TOPOGRAPHICAL MAP) PUBLISHED BY THE UNITED STATES DEPARTMENT OF THE INTERIOR, GEOLOGICAL SURVEY. SAID ELEVATION IS MARKED AS BEING 5043 FEET.



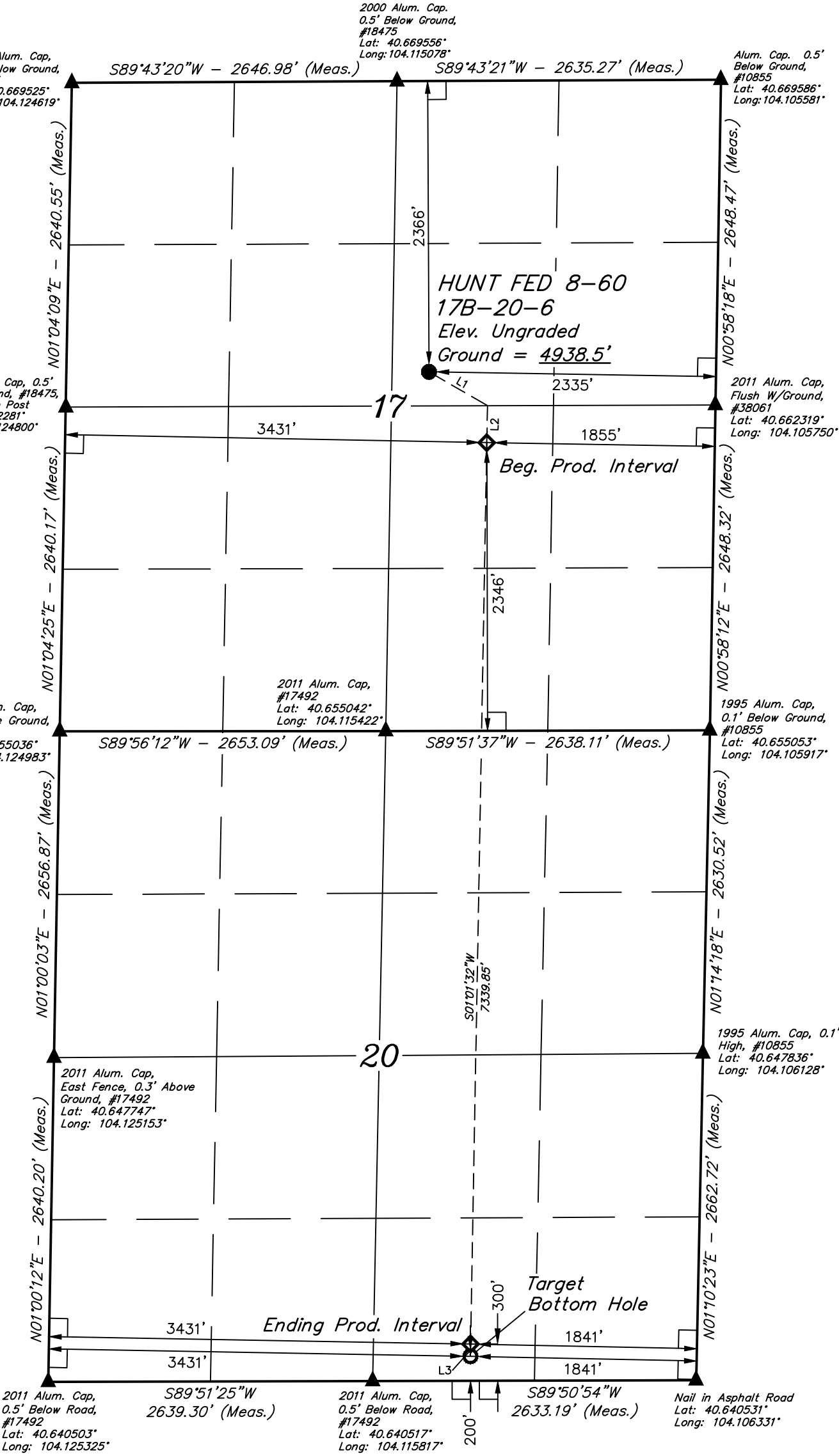
UELS, LLC
Corporate Office * 85 South 200 East
Vernal, UT 84078 * (435) 789-1017

BISON OIL & GAS II

HUNT FED 8-60 17B-20-6
SW 1/4 NE 1/4, SECTION 17, T8N, R60W, 6th P.M.
WELD COUNTY, COLORADO

SURVEYED BY	GREG WEIMER, C.T.	07-19-17	SCALE
DRAWN BY	J.U.	07-11-18	1" = 1000'

WELL LOCATION PLAT



CERTIFICATE OF REGISTRATION
THIS IS TO CERTIFY THAT THE ABOVE AND AS PREPARED FROM FIELD NOTES OF ACTUAL SURVEYS MADE BY ME OR UNDER MY SUPERVISION, AND THAT THE SAME ARE TRUE AND CORRECT TO THE BEST OF MY KNOWLEDGE AND BELIEF.

REGISTERED LAND SURVEYOR
REGISTRATION NO. 28285
STATE OF COLORADO

08-07-17