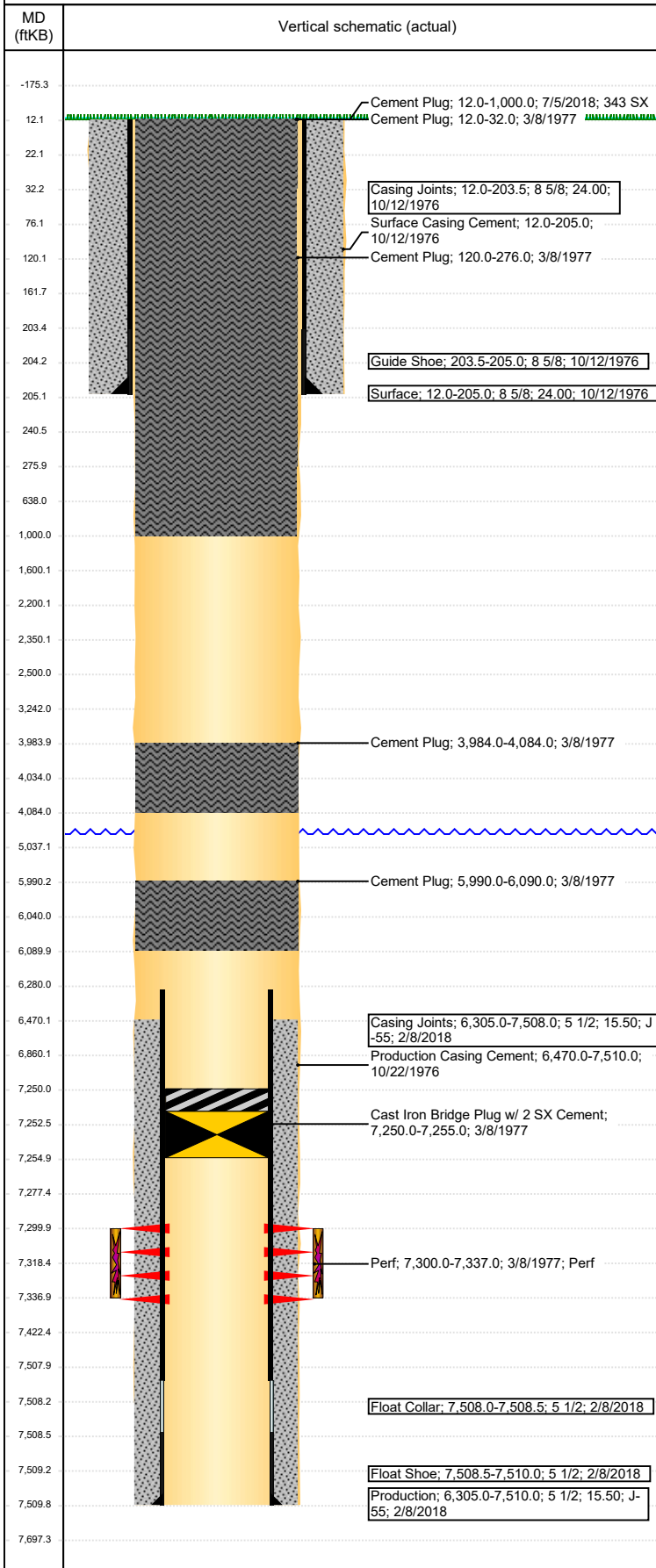


Wellbore Schematic Input Report

Well Name: CHAMPLIN AMOCO A01 308

VERTICAL - Original Hole, 8/13/2018 2:44:15 PM



Well Header			
API 05-123-08968	Business Unit DJ BASIN	District 15	Well Config VERTICAL
Original KB Elevation (ft) 4,671	KB - GL / MSL (ftKB) 12.00	Spud Date 10/12/1976	P & A Date 7/5/2018
Comment			
Directions To Well 57 & 66, NORTH .25, EAST-SOUTHEAST .25, EAST-NORTHEAST .25 INTO			
Congressional Location			
Quarter 3 SE	Quarter 4 SW	Section 23	Township 6
TwNS Dir N	Range 64	Range E/W Dir W	
Bottom Hole Location			
North-South Distance (ft)	From N or S Line	East-West Distance (ft)	From E or W Line
Plug Back Total Depths			
Date	Depth (ftKB)	Method	Com
Wellbore Sections			
Section Des	Size (in)	Act Top, MD (ftKB)	Act Btm, MD (ftKB)
SURFACE	12 1/4	12	205
PRODUCTION	7 7/8	205	7,510
Zone Statuses			
Zone Name	Status Date	Status	Fluid Type
Casing Strings			
Surface, 205.0ftKB			
Casing Description Surface	Run Date 10/12/1976	OD (in) 8 5/8	Wt/Len (lb/ft) 24.00
		Grade J-55	Top, MD (ftKB) 12.0
			MD (ftKB) 205.0
Production, 7,510.0ftKB			
Casing Description Production	Run Date 2/8/2018	OD (in) 5 1/2	Wt/Len (lb/ft) 15.50
		Grade J-55	Top, MD (ftKB) 12.0
			MD (ftKB) 7,510.0
Cement			
Description Surface Casing Cement	Top Depth (ftKB) 12.0	Bottom Depth (ftKB) 205.0	
Description Production Casing Cement	Top Depth (ftKB) 6,470.0	Bottom Depth (ftKB) 7,510.0	
Description Cement Plug	Top Depth (ftKB) 5,990.0	Bottom Depth (ftKB) 6,090.0	
Description Cement Plug	Top Depth (ftKB) 3,984.0	Bottom Depth (ftKB) 4,084.0	
Description Cement Plug	Top Depth (ftKB) 120.0	Bottom Depth (ftKB) 276.0	
Description Cement Plug	Top Depth (ftKB) 12.0	Bottom Depth (ftKB) 32.0	
Description Balance Plug	Top Depth (ftKB) 2,200.0	Bottom Depth (ftKB) 2,500.0	
Description Cement Plug	Top Depth (ftKB) 12.0	Bottom Depth (ftKB) 1,000.0	
Description Cement Plug	Top Depth (ftKB) 12.0	Bottom Depth (ftKB) 1,000.0	
Tubing Strings			
Tubing Description	Run Date	String...	ID (in)
		Wt (lb/ft)	Grade
		Len (ft)	Set De...
Other In Hole			
Run Date	Des	OD (in)	Top (ftKB)
3/8/1977	Cast Iron Bridge Plug w/ 2 SX Cement	4.95	7,250.0
			7,255.0
Logs			
Date	Type	Top, MD (ftKB)	Btm, MD (ftKB)
Perforation Data			
Linked Zone	Bnch/St g	Sum of Entered Shot Total	Top (ftKB)
J SAND, Original Hole		0	7,300.00
			Btm (ftKB)
			Date
			3/8/1977
Total (Sum)			
		0	

Well Name: CHAMPLIN AMOCO A01 308

VERTICAL - Original Hole, 8/13/2018 2:44:17 PM

Stimulation Intervals

Start Date
3/8/1977

Primary Job Type
DRILLING - ORIGINAL

Technical Result

Tech Result Details

Tech Result Note

Comment

