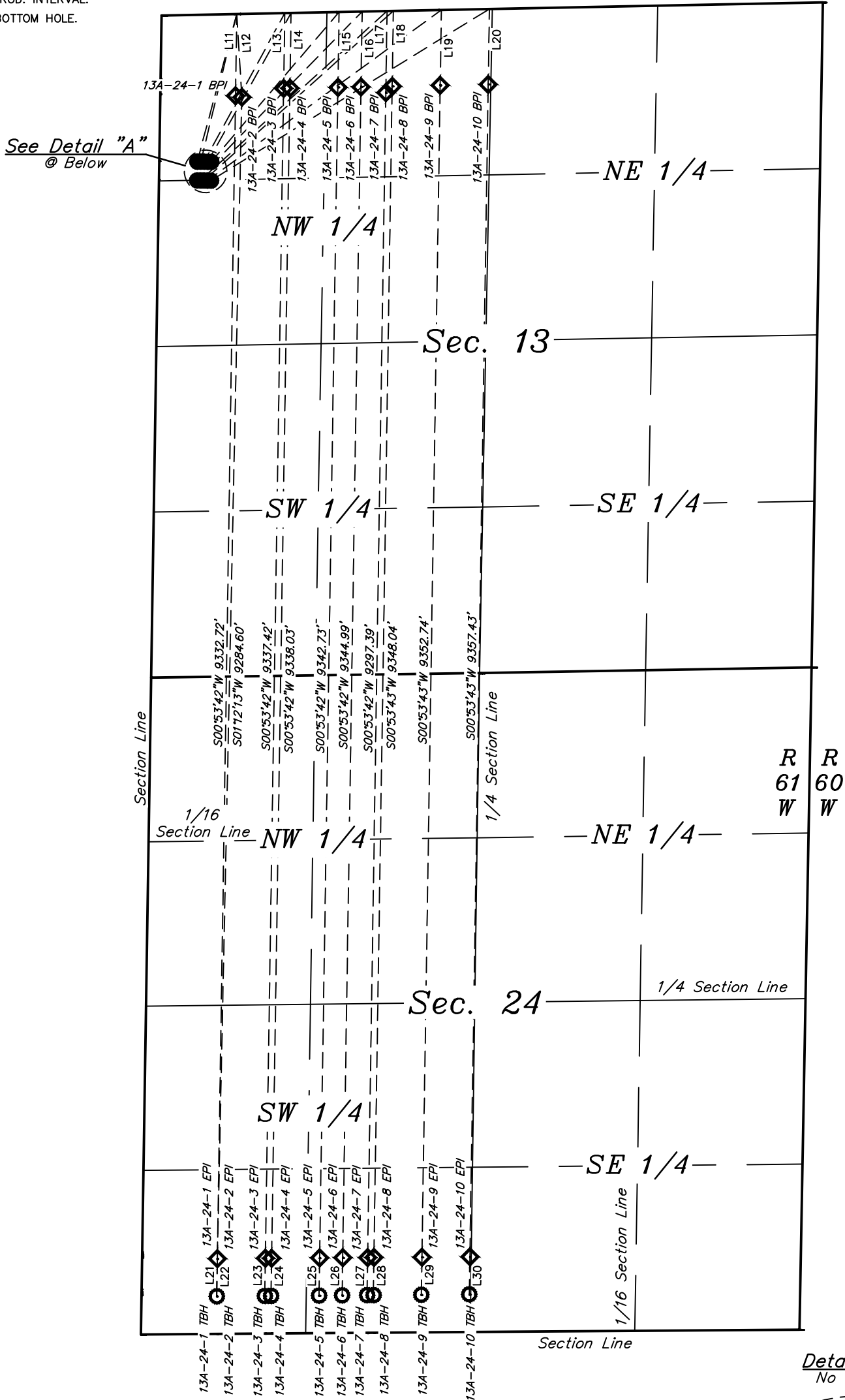
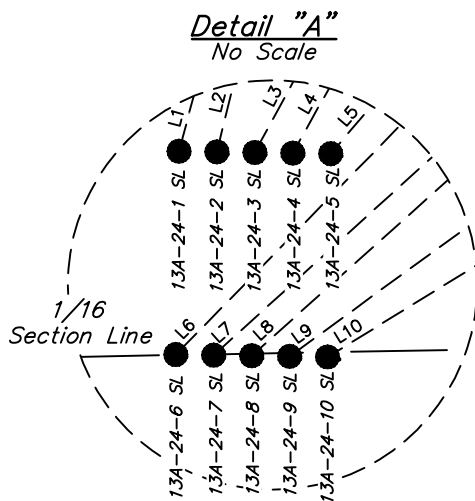


N LEGEND:

- 90° SYMBOL
- SURFACE LOCATION.
- PRODUCTION INTERVAL.
- TARGET BOTTOM HOLE.
- SL = SURFACE LOCATION.
- BPI = BEG. PROD. INTERVAL.
- EPI = ENDING PROD. INTERVAL.
- TBH = TARGET BOTTOM HOLE.



LINE TABLE		
LINE	DIRECTION	LENGTH
L1	N15°00'40"E	1218.26'
L2	N13°43'34"E	1211.73'
L3	N28°28'14"E	1348.23'
L4	N29°15'27"E	1360.12'
L5	N40°29'17"E	1570.81'
L6	N44°23'37"E	1884.46'
L7	N47°47'28"E	2010.82'
L8	N48°10'46"E	2028.15'
L9	N53°54'54"E	2309.77'
L10	N58°22'11"E	2609.43'
L11	S00°53'42"W	600.38'
L12	S03°30'47"E	650.56'
L13	S00°53'42"W	600.38'
L14	S00°53'42"W	600.38'
L15	S00°53'42"W	600.38'
L16	S00°53'42"W	600.38'
L17	S00°53'42"W	650.41'
L18	S00°53'43"W	600.38'
L19	S00°53'43"W	600.38'
L20	S00°53'43"W	600.38'
L21	S00°52'39"W	300.08'
L22	S00°52'39"W	300.08'
L23	S00°52'39"W	300.08'
L24	S00°52'39"W	300.08'
L25	S00°52'39"W	300.08'
L26	S00°52'39"W	300.08'
L27	S00°52'39"W	300.08'
L28	S00°52'39"W	300.08'
L29	S00°52'39"W	300.08'
L30	S00°52'39"W	300.08'



REV: 1 08-02-18 C.IVIE (BPI MOVE)

BISON OIL & GAS II

MILLER 7-61 13A PAD  
W 1/2 NW 1/4, SECTION 13, T7N, R61W, 6th P.M.  
WELD COUNTY, COLORADO

SURVEYED BY	MATTHEW MILLER, D.E.	07-03-18	SCALE
DRAWN BY	C.IVIE	07-12-18	1" = 1000'
MULTI-WELL PLAN		FIGURE #3	



UELS, LLC  
Corporate Office \* 85 South 200 East  
Vernal, UT 84078 \* (435) 789-1017