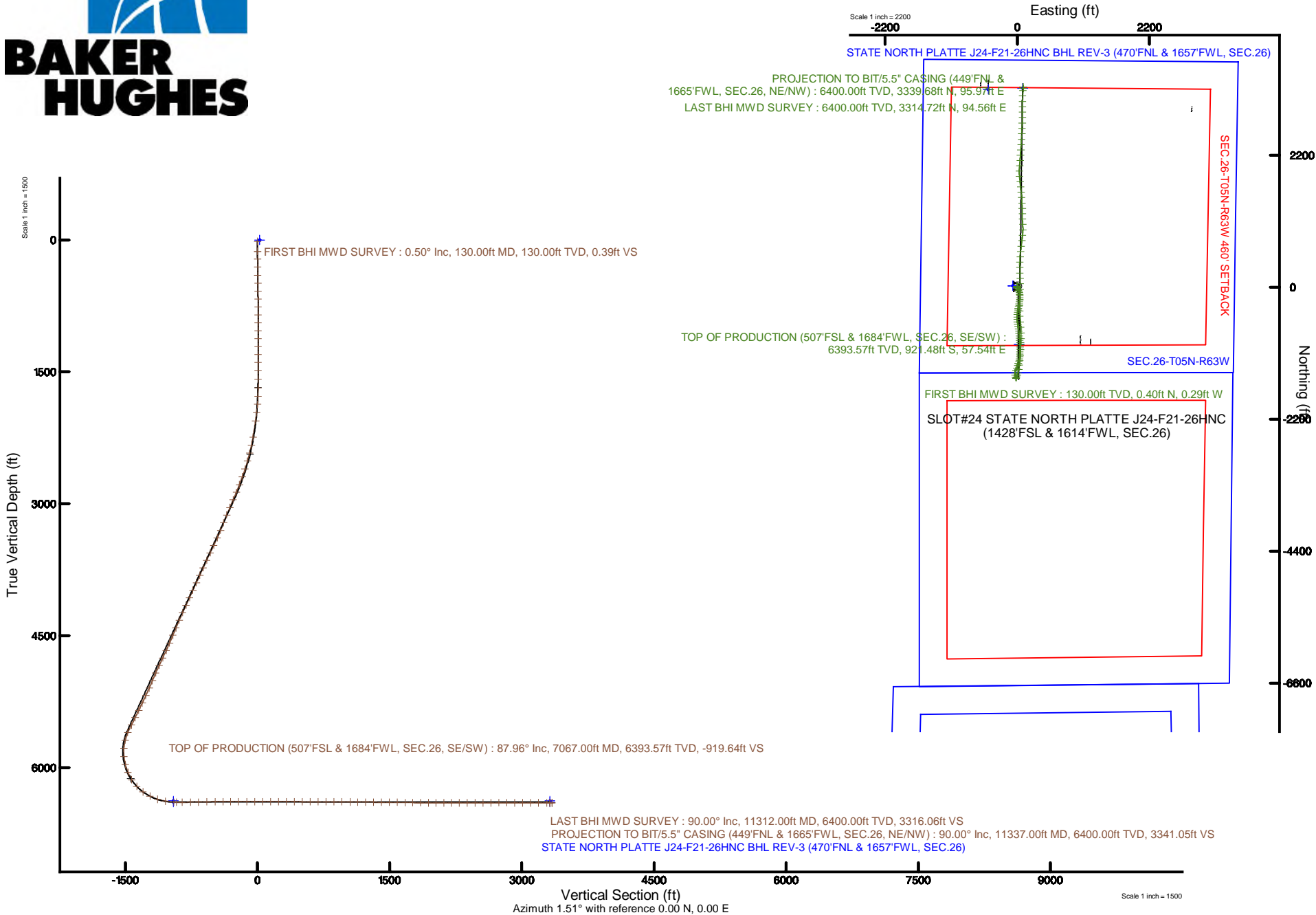


BONANZA CREEK OIL COMPANY

Location: COLORADO Slot: SLOT#24 STATE NORTH PLATTE J24-F21-26HNC (1428'FSL & 1614'FWL, SEC.26)
Field: WELD COUNTY Well: STATE NORTH PLATTE J24-F21-26HNC
Facility: SEC.26-T5N-R63W Wellbore: STATE NORTH PLATTE J24-F21-26HNC PWB



Plot reference wellpath is STATE NORTH PLATTE J24-F21-26HNC PWP (REV-C.0)	Grid System: NAD83 / Lambert Colorado SP, Northern Zone (501), US feet
True vertical depths are referenced to RIG (4555'GL + 17'RKB) (RKB)	* = Wellpath was transformed from a different geodetic datum
Measured depths are referenced to RIG (4555'GL + 17'RKB) (RKB)	North Reference: True north
RIG (4555'GL + 17'RKB) (RKB) to Mean Sea Level: 4572 feet	Scale: True distance
Mean Sea Level to Ground level (At Slot: SLOT#24 STATE NORTH PLATTE J24-F21-26HNC (1428'FSL & 1614'FWL, SEC.26): 0 feet	Depths are in feet
Coordinates are in feet referenced to Slot	Created by: ingmjmr on 2018-08-03
	Database: Denver





Actual Wellpath Report

STATE NORTH PLATTE J24-F21-26HNC AWP

Page 1 of 9



REFERENCE WELLPATH IDENTIFICATION

Operator	BONANZA CREEK OIL COMPANY	Slot	SLOT#24 STATE NORTH PLATTE J24-F21-26HNC (1428'FSL & 1614'FWL, SEC.26)
Area	COLORADO	Well	STATE NORTH PLATTE J24-F21-26HNC
Field	WELD COUNTY	Wellbore	STATE NORTH PLATTE J24-F21-26HNC AWP
Facility	SEC.26-T5N-R63W		

REPORT SETUP INFORMATION

Projection System	NAD83 / Lambert Colorado SP, Northern Zone (501), US feet	Software System	WellArchitect® 5.0
North Reference	True	User	Ingmjmr
Scale	0.999959	Report Generated	8/3/2018 at 12:32:57 PM
Convergence at slot	0.71° East	Database/Source file	Denver/STATE_NORTH_PLATTE_J24-F21-26HNC_AWP.xml

WELLPATH LOCATION

	Local coordinates		Grid coordinates		Geographic coordinates	
	North[ft]	East[ft]	Easting[US ft]	Northing[US ft]	Latitude	Longitude
Slot Location	-3336.67	610.57	3304602.38	1378445.77	40°22'01.492"N	104°24'24.548"W
Facility Reference Pt			3303950.84	1381774.54	40°22'34.464"N	104°24'32.436"W
Field Reference Pt			3224525.77	1254425.87	40°01'44.400"N	104°41'53.556"W

WELLPATH DATUM

Calculation method	Minimum curvature	RIG (4555'GL + 17'RKB) (RKB) to Facility Vertical Datum	4572.00ft
Horizontal Reference Pt	Slot	RIG (4555'GL + 17'RKB) (RKB) to Mean Sea Level	4572.00ft
Vertical Reference Pt	RIG (4555'GL + 17'RKB) (RKB)	RIG (4555'GL + 17'RKB) (RKB) to Ground Level at Slot (SLOT#24 STATE NORTH PLATTE J24-F21-26HNC (1428'FSL & 1614'FWL, SEC.26))	4572.00ft
MD Reference Pt	RIG (4555'GL + 17'RKB) (RKB)	Section Origin	N 0.00, E 0.00 ft
Field Vertical Reference	Mean Sea Level	Section Azimuth	1.51°



Actual Wellpath Report

STATE NORTH PLATTE J24-F21-26HNC AWP

Page 2 of 9



REFERENCE WELLPATH IDENTIFICATION			
Operator	BONANZA CREEK OIL COMPANY	Slot	SLOT#24 STATE NORTH PLATTE J24-F21-26HNC (1428'FSL & 1614'FWL, SEC.26)
Area	COLORADO	Well	STATE NORTH PLATTE J24-F21-26HNC
Field	WELD COUNTY	Wellbore	STATE NORTH PLATTE J24-F21-26HNC AWB
Facility	SEC.26-T5N-R63W		

WELLPATH DATA (126 stations) † = interpolated/extrapolated station

MD [ft]	Inclination [°]	Azimuth [°]	TVD [ft]	Vert Sect [ft]	North [ft]	East [ft]	Latitude	Longitude	DLS [°/100ft]	Comments
0.00†	0.000	324.380	0.00	0.00	0.00	0.00	40°22'01.492"N	104°24'24.548"W	0.00	
17.00	0.000	324.380	17.00	0.00	0.00	0.00	40°22'01.492"N	104°24'24.548"W	0.00	
130.00	0.500	324.380	130.00	0.39	0.40	-0.29	40°22'01.496"N	104°24'24.552"W	0.44	FIRST BHI MWD SURVEY
219.00	0.690	319.610	218.99	1.10	1.12	-0.86	40°22'01.503"N	104°24'24.559"W	0.22	
308.00	0.540	341.040	307.99	1.89	1.93	-1.34	40°22'01.511"N	104°24'24.565"W	0.31	
400.00	0.800	329.930	399.98	2.85	2.90	-1.81	40°22'01.521"N	104°24'24.571"W	0.31	
491.00	0.880	335.300	490.97	4.01	4.08	-2.42	40°22'01.532"N	104°24'24.579"W	0.12	
582.00	0.940	327.260	581.96	5.26	5.34	-3.11	40°22'01.545"N	104°24'24.588"W	0.15	
672.00	0.500	342.290	671.95	6.24	6.34	-3.63	40°22'01.555"N	104°24'24.595"W	0.53	
761.00	0.290	17.420	760.95	6.82	6.92	-3.68	40°22'01.560"N	104°24'24.596"W	0.35	
851.00	0.070	107.370	850.95	7.03	7.12	-3.56	40°22'01.562"N	104°24'24.594"W	0.33	
942.00	0.070	158.400	941.95	6.96	7.06	-3.49	40°22'01.562"N	104°24'24.593"W	0.07	
1032.00	0.110	194.330	1031.95	6.83	6.92	-3.49	40°22'01.560"N	104°24'24.593"W	0.07	
1122.00	0.170	292.600	1121.95	6.79	6.89	-3.63	40°22'01.560"N	104°24'24.595"W	0.24	
1211.00	0.180	308.630	1210.95	6.92	7.03	-3.86	40°22'01.561"N	104°24'24.598"W	0.06	
1303.00	0.350	285.450	1302.95	7.08	7.19	-4.25	40°22'01.563"N	104°24'24.603"W	0.21	
1393.00	0.370	237.180	1392.95	6.98	7.11	-4.76	40°22'01.562"N	104°24'24.609"W	0.33	
1483.00	0.650	255.740	1482.94	6.68	6.82	-5.50	40°22'01.559"N	104°24'24.619"W	0.36	
1581.00	0.700	263.040	1580.94	6.44	6.61	-6.63	40°22'01.557"N	104°24'24.634"W	0.10	
1684.00	0.300	241.180	1683.93	6.21	6.41	-7.49	40°22'01.555"N	104°24'24.645"W	0.42	
1776.00	2.410	204.150	1775.90	4.30	4.53	-8.49	40°22'01.537"N	104°24'24.658"W	2.37	
1870.00	4.950	155.720	1869.72	-1.18	-0.98	-7.63	40°22'01.482"N	104°24'24.647"W	4.05	
1964.00	7.820	145.660	1963.13	-10.01	-9.95	-2.36	40°22'01.394"N	104°24'24.578"W	3.27	
2058.00	9.340	149.780	2056.08	-21.69	-21.83	5.09	40°22'01.276"N	104°24'24.482"W	1.74	
2247.00	10.760	155.890	2242.18	-50.64	-51.19	20.02	40°22'00.986"N	104°24'24.289"W	0.94	
2340.00	12.580	163.160	2333.26	-68.08	-68.81	26.50	40°22'00.812"N	104°24'24.206"W	2.51	
2434.00	14.860	167.280	2424.57	-89.49	-90.36	32.12	40°22'00.599"N	104°24'24.133"W	2.64	
2528.00	16.420	172.900	2515.09	-114.31	-115.31	36.42	40°22'00.353"N	104°24'24.078"W	2.31	
2622.00	18.510	174.860	2604.75	-142.27	-143.36	39.39	40°22'00.075"N	104°24'24.039"W	2.31	
2716.00	19.650	178.340	2693.59	-172.87	-174.02	41.19	40°21'59.772"N	104°24'24.016"W	1.71	



Actual Wellpath Report

STATE NORTH PLATTE J24-F21-26HNC AWP

Page 3 of 9



REFERENCE WELLPATH IDENTIFICATION			
Operator	BONANZA CREEK OIL COMPANY	Slot	SLOT#24 STATE NORTH PLATTE J24-F21-26HNC (1428'FSL & 1614'FWL, SEC.26)
Area	COLORADO	Well	STATE NORTH PLATTE J24-F21-26HNC
Field	WELD COUNTY	Wellbore	STATE NORTH PLATTE J24-F21-26HNC AWP
Facility	SEC.26-T5N-R63W		

WELLPATH DATA (126 stations)

MD [ft]	Inclination [°]	Azimuth [°]	TVD [ft]	Vert Sect [ft]	North [ft]	East [ft]	Latitude	Longitude	DLS [°/100ft]	Comments
2810.00	21.380	184.670	2781.64	-205.77	-206.90	40.25	40°21'59.447"N	104°24'24.028"W	2.99	
2904.00	22.080	188.630	2868.96	-240.41	-241.45	36.21	40°21'59.106"N	104°24'24.080"W	1.73	
2998.00	23.860	191.170	2955.51	-276.69	-277.57	29.87	40°21'58.749"N	104°24'24.162"W	2.17	
3092.00	23.120	191.300	3041.72	-313.62	-314.32	22.57	40°21'58.386"N	104°24'24.256"W	0.79	
3185.00	22.670	190.930	3127.39	-349.29	-349.82	15.60	40°21'58.035"N	104°24'24.347"W	0.51	
3279.00	21.860	189.770	3214.38	-384.48	-384.85	9.19	40°21'57.689"N	104°24'24.429"W	0.98	
3373.00	22.140	188.430	3301.54	-419.38	-419.62	3.62	40°21'57.345"N	104°24'24.501"W	0.61	
3467.00	25.290	187.520	3387.59	-456.94	-457.06	-1.60	40°21'56.975"N	104°24'24.569"W	3.37	
3561.00	25.630	182.060	3472.47	-497.25	-497.29	-4.96	40°21'56.578"N	104°24'24.612"W	2.52	
3655.00	25.400	176.320	3557.32	-537.66	-537.73	-4.40	40°21'56.178"N	104°24'24.605"W	2.64	
3749.00	25.470	171.040	3642.22	-577.62	-577.82	0.05	40°21'55.782"N	104°24'24.547"W	2.41	
3843.00	25.020	167.720	3727.24	-616.80	-617.21	7.42	40°21'55.393"N	104°24'24.452"W	1.58	
3937.00	24.810	171.340	3812.50	-655.52	-656.13	14.62	40°21'55.008"N	104°24'24.359"W	1.64	
4030.00	25.060	174.660	3896.84	-694.28	-695.03	19.39	40°21'54.624"N	104°24'24.297"W	1.53	
4124.00	24.870	172.600	3982.06	-733.58	-734.46	23.79	40°21'54.234"N	104°24'24.241"W	0.95	
4218.00	24.310	174.410	4067.53	-772.31	-773.32	28.22	40°21'53.850"N	104°24'24.183"W	1.00	
4312.00	25.210	176.530	4152.89	-811.45	-812.56	31.32	40°21'53.463"N	104°24'24.143"W	1.34	
4406.00	25.000	175.830	4238.01	-851.16	-852.35	33.97	40°21'53.069"N	104°24'24.109"W	0.39	
4500.00	23.450	173.490	4323.73	-889.45	-890.75	37.54	40°21'52.690"N	104°24'24.063"W	1.94	
4594.00	22.700	172.920	4410.21	-925.91	-927.33	41.89	40°21'52.328"N	104°24'24.007"W	0.83	
4687.00	23.470	178.340	4495.77	-962.15	-963.65	44.64	40°21'51.969"N	104°24'23.971"W	2.43	
4781.00	22.610	183.800	4582.28	-998.90	-1000.40	43.99	40°21'51.606"N	104°24'23.980"W	2.45	
4874.00	24.330	183.180	4667.59	-1035.91	-1037.37	41.74	40°21'51.241"N	104°24'24.009"W	1.87	
4968.00	26.010	180.720	4752.66	-1075.88	-1077.31	40.41	40°21'50.846"N	104°24'24.026"W	2.11	
5062.00	25.590	180.680	4837.29	-1116.79	-1118.22	39.91	40°21'50.442"N	104°24'24.032"W	0.45	
5156.00	23.210	183.970	4922.89	-1155.60	-1157.01	38.38	40°21'50.059"N	104°24'24.052"W	2.91	
5250.00	22.980	189.720	5009.37	-1192.27	-1193.58	34.00	40°21'49.697"N	104°24'24.109"W	2.41	
5344.00	24.150	193.880	5095.54	-1229.22	-1230.33	26.29	40°21'49.334"N	104°24'24.208"W	2.16	
5438.00	26.450	197.740	5180.52	-1268.11	-1268.95	15.30	40°21'48.953"N	104°24'24.350"W	3.01	
5532.00	26.620	200.320	5264.62	-1308.14	-1308.64	1.60	40°21'48.560"N	104°24'24.527"W	1.24	



Actual Wellpath Report

STATE NORTH PLATTE J24-F21-26HNC AWP

Page 4 of 9



REFERENCE WELLPATH IDENTIFICATION			
Operator	BONANZA CREEK OIL COMPANY	Slot	SLOT#24 STATE NORTH PLATTE J24-F21-26HNC (1428'FSL & 1614'FWL, SEC.26)
Area	COLORADO	Well	STATE NORTH PLATTE J24-F21-26HNC
Field	WELD COUNTY	Wellbore	STATE NORTH PLATTE J24-F21-26HNC AWP
Facility	SEC.26-T5N-R63W		

WELLPATH DATA (126 stations) † = interpolated/extrapolated station

MD [ft]	Inclination [°]	Azimuth [°]	TVD [ft]	Vert Sect [ft]	North [ft]	East [ft]	Latitude	Longitude	DLS [°/100ft]	Comments
5626.00	27.540	200.680	5348.32	-1348.60	-1348.72	-13.38	40°21'48.164"N	104°24'24.721"W	0.99	
5720.00	27.310	199.360	5431.75	-1389.66	-1389.39	-28.21	40°21'47.762"N	104°24'24.912"W	0.69	
5814.00	27.560	192.120	5515.20	-1431.57	-1431.01	-39.92	40°21'47.351"N	104°24'25.064"W	3.56	
5908.00	24.300	169.320	5599.94	-1471.96	-1471.39	-40.91	40°21'46.952"N	104°24'25.076"W	11.09	
6002.00	14.790	154.960	5688.47	-1501.68	-1501.35	-32.22	40°21'46.656"N	104°24'24.964"W	11.26	
6096.00	6.840	146.760	5780.73	-1517.04	-1516.93	-24.06	40°21'46.502"N	104°24'24.859"W	8.59	
6190.00	6.530	16.060	5874.44	-1516.46	-1516.47	-19.50	40°21'46.507"N	104°24'24.800"W	12.92	
6284.00	15.090	24.620	5966.70	-1500.00	-1500.18	-12.91	40°21'46.668"N	104°24'24.715"W	9.24	
6378.00	24.290	23.930	6055.10	-1470.81	-1471.33	0.06	40°21'46.953"N	104°24'24.547"W	9.79	
6472.00	32.650	11.880	6137.73	-1427.89	-1428.73	13.16	40°21'47.374"N	104°24'24.378"W	10.75	
6567.00	43.450	8.150	6212.44	-1370.05	-1371.14	23.09	40°21'47.943"N	104°24'24.250"W	11.62	
6661.00	53.420	8.690	6274.73	-1300.33	-1301.66	33.40	40°21'48.629"N	104°24'24.116"W	10.62	
6755.00	62.900	6.120	6324.27	-1220.99	-1222.55	43.59	40°21'49.411"N	104°24'23.985"W	10.35	
6849.00	72.110	2.800	6360.20	-1134.36	-1136.07	50.25	40°21'50.266"N	104°24'23.899"W	10.33	
6943.00	81.100	1.060	6381.96	-1043.01	-1044.78	53.30	40°21'51.168"N	104°24'23.859"W	9.73	
7036.00	86.430	2.540	6392.05	-950.60	-952.41	56.21	40°21'52.081"N	104°24'23.822"W	5.95	
7067.00†	87.963	2.388	6393.57	-919.64	-921.48	57.54	40°21'52.386"N	104°24'23.805"W	4.97	TOP OF PRODUCTION (507'FSL & 1684'FWL, SEC.26, SE/SW)
7130.00	91.080	2.080	6394.10	-856.66	-858.53	60.00	40°21'53.008"N	104°24'23.773"W	4.97	
7224.00	91.170	359.330	6392.25	-762.70	-764.57	61.15	40°21'53.937"N	104°24'23.758"W	2.93	
7318.00	91.080	356.180	6390.40	-668.93	-670.67	57.47	40°21'54.865"N	104°24'23.806"W	3.35	
7412.00	91.140	354.640	6388.58	-575.48	-576.99	49.95	40°21'55.790"N	104°24'23.903"W	1.64	
7506.00	91.200	356.200	6386.66	-482.03	-483.32	42.45	40°21'56.716"N	104°24'24.000"W	1.66	
7595.00	89.970	357.700	6385.76	-393.32	-394.45	37.71	40°21'57.594"N	104°24'24.061"W	2.18	
7684.00	90.060	0.630	6385.73	-304.41	-305.47	36.42	40°21'58.473"N	104°24'24.078"W	3.29	
7773.00	89.970	3.570	6385.71	-215.42	-216.54	39.68	40°21'59.352"N	104°24'24.035"W	3.30	
7865.00	90.090	1.290	6385.66	-123.44	-124.63	43.58	40°22'00.260"N	104°24'23.985"W	2.48	
7956.00	90.120	1.530	6385.49	-32.44	-33.66	45.82	40°22'01.159"N	104°24'23.956"W	0.27	
8046.00	89.910	0.760	6385.47	57.56	56.33	47.62	40°22'02.049"N	104°24'23.933"W	0.89	
8137.00	90.120	358.070	6385.45	148.49	147.31	46.69	40°22'02.948"N	104°24'23.945"W	2.97	
8226.00	89.600	358.170	6385.66	237.33	236.26	43.77	40°22'03.827"N	104°24'23.983"W	0.59	



Actual Wellpath Report

STATE NORTH PLATTE J24-F21-26HNC AWP

Page 5 of 9



REFERENCE WELLPATH IDENTIFICATION			
Operator	BONANZA CREEK OIL COMPANY	Slot	SLOT#24 STATE NORTH PLATTE J24-F21-26HNC (1428'FSL & 1614'FWL, SEC.26)
Area	COLORADO	Well	STATE NORTH PLATTE J24-F21-26HNC
Field	WELD COUNTY	Wellbore	STATE NORTH PLATTE J24-F21-26HNC AWB
Facility	SEC.26-T5N-R63W		

WELLPATH DATA (126 stations)

MD [ft]	Inclination [°]	Azimuth [°]	TVD [ft]	Vert Sect [ft]	North [ft]	East [ft]	Latitude	Longitude	DLS [°/100ft]	Comments
8316.00	89.600	358.600	6386.29	327.20	326.23	41.23	40°22'04.716"N	104°24'24.015"W	0.48	
8407.00	89.690	1.270	6386.86	418.15	417.22	41.13	40°22'05.615"N	104°24'24.017"W	2.94	
8497.00	89.510	4.560	6387.48	508.11	507.08	45.70	40°22'06.503"N	104°24'23.958"W	3.66	
8587.00	89.690	6.410	6388.11	597.89	596.67	54.31	40°22'07.388"N	104°24'23.846"W	2.07	
8676.00	89.540	6.360	6388.71	686.56	685.11	64.20	40°22'08.262"N	104°24'23.719"W	0.18	
8768.00	89.850	6.840	6389.20	778.20	776.50	74.78	40°22'09.165"N	104°24'23.582"W	0.62	
8858.00	90.150	7.380	6389.20	867.77	865.81	85.92	40°22'10.048"N	104°24'23.438"W	0.69	
8948.00	89.600	0.620	6389.40	957.63	955.54	92.19	40°22'10.934"N	104°24'23.357"W	7.54	
9040.00	89.510	355.490	6390.11	1049.43	1047.45	89.07	40°22'11.843"N	104°24'23.397"W	5.58	
9130.00	89.510	358.300	6390.88	1139.13	1137.31	84.20	40°22'12.731"N	104°24'23.460"W	3.12	
9219.00	89.540	0.620	6391.62	1228.06	1226.29	83.36	40°22'13.610"N	104°24'23.471"W	2.61	
9309.00	89.450	356.960	6392.41	1317.94	1316.25	81.46	40°22'14.499"N	104°24'23.496"W	4.07	
9397.00	89.880	354.040	6392.93	1405.45	1403.97	74.55	40°22'15.366"N	104°24'23.585"W	3.35	
9486.00	89.850	1.100	6393.14	1494.18	1492.83	70.78	40°22'16.244"N	104°24'23.634"W	7.93	
9577.00	89.020	352.680	6394.04	1584.80	1583.61	65.85	40°22'17.141"N	104°24'23.697"W	9.30	
9668.00	89.050	353.170	6395.57	1674.77	1673.91	54.64	40°22'18.033"N	104°24'23.842"W	0.54	
9754.00	88.920	354.710	6397.09	1760.00	1759.41	45.57	40°22'18.878"N	104°24'23.959"W	1.80	
9843.00	89.080	352.980	6398.65	1848.19	1847.88	36.03	40°22'19.752"N	104°24'24.083"W	1.95	
9934.00	89.570	2.190	6399.72	1938.87	1938.70	32.20	40°22'20.650"N	104°24'24.132"W	10.13	
10021.00	90.000	5.440	6400.05	2025.79	2025.49	37.98	40°22'21.507"N	104°24'24.057"W	3.77	
10108.00	90.030	4.010	6400.02	2112.65	2112.19	45.15	40°22'22.364"N	104°24'23.965"W	1.64	
10196.00	89.940	4.650	6400.05	2200.54	2199.94	51.79	40°22'23.231"N	104°24'23.879"W	0.73	
10283.00	89.970	4.510	6400.12	2287.42	2286.66	58.74	40°22'24.088"N	104°24'23.789"W	0.16	
10374.00	90.120	3.170	6400.04	2378.34	2377.46	64.83	40°22'24.985"N	104°24'23.710"W	1.48	
10463.00	90.060	3.380	6399.90	2467.30	2466.31	69.92	40°22'25.863"N	104°24'23.645"W	0.25	
10553.00	90.060	1.450	6399.81	2557.28	2556.23	73.71	40°22'26.752"N	104°24'23.596"W	2.14	
10643.00	90.120	2.820	6399.67	2647.27	2646.16	77.06	40°22'27.641"N	104°24'23.552"W	1.52	
10735.00	90.030	2.600	6399.55	2739.25	2738.06	81.41	40°22'28.549"N	104°24'23.496"W	0.26	
10825.00	89.910	0.900	6399.60	2829.25	2828.01	84.16	40°22'29.438"N	104°24'23.461"W	1.89	
10914.00	90.000	358.640	6399.67	2918.20	2917.01	83.81	40°22'30.317"N	104°24'23.465"W	2.54	



Actual Wellpath Report

STATE NORTH PLATTE J24-F21-26HNC AWP

Page 6 of 9



REFERENCE WELLPATH IDENTIFICATION			
Operator	BONANZA CREEK OIL COMPANY	Slot	SLOT#24 STATE NORTH PLATTE J24-F21-26HNC (1428'FSL & 1614'FWL, SEC.26)
Area	COLORADO	Well	STATE NORTH PLATTE J24-F21-26HNC
Field	WELD COUNTY	Wellbore	STATE NORTH PLATTE J24-F21-26HNC AWP
Facility	SEC.26-T5N-R63W		

WELLPATH DATA (126 stations)										
MD [ft]	Inclination [°]	Azimuth [°]	TVD [ft]	Vert Sect [ft]	North [ft]	East [ft]	Latitude	Longitude	DLS [°/100ft]	Comments
11004.00	89.910	359.920	6399.74	3008.13	3007.00	82.67	40°22'31.206"N	104°24'23.480"W	1.43	
11094.00	89.910	1.690	6399.88	3098.12	3096.99	83.94	40°22'32.095"N	104°24'23.463"W	1.97	
11185.00	89.970	2.860	6399.97	3189.11	3187.91	87.55	40°22'32.994"N	104°24'23.417"W	1.29	
11277.00	90.000	3.360	6400.00	3281.08	3279.78	92.54	40°22'33.902"N	104°24'23.352"W	0.54	
11312.00	90.000	3.240	6400.00	3316.06	3314.72	94.56	40°22'34.247"N	104°24'23.326"W	0.34	LAST BHI MWD SURVEY
11337.00	90.000	3.240	6400.00	3341.05	3339.68	95.97	40°22'34.494"N	104°24'23.308"W	0.00	PROJECTION TO BIT/5.5" CASING (449'FNL & 1665'FWL, SEC.26, NE/NW)



Actual Wellpath Report

STATE NORTH PLATTE J24-F21-26HNC AWP

Page 7 of 9



REFERENCE WELLPATH IDENTIFICATION			
Operator	BONANZA CREEK OIL COMPANY	Slot	SLOT#24 STATE NORTH PLATTE J24-F21-26HNC (1428'FSL & 1614'FWL, SEC.26)
Area	COLORADO	Well	STATE NORTH PLATTE J24-F21-26HNC
Field	WELD COUNTY	Wellbore	STATE NORTH PLATTE J24-F21-26HNC AWP
Facility	SEC.26-T5N-R63W		

TARGETS								
Name	TVD [ft]	North [ft]	East [ft]	Grid East [US ft]	Grid North [US ft]	Latitude	Longitude	Shape
SEC.26-T05N-R63W	-14.00	3296.02	-486.25	3304075.56	1381735.41	40°22'34.062"N	104°24'30.831"W	polygon
SEC.02-T4N-R63W	0.00	25.10	-76.10	3304525.98	1378469.93	40°22'01.740"N	104°24'25.531"W	polygon
SEC.35-T5N-R63W	0.00	25.10	-76.10	3304525.98	1378469.93	40°22'01.740"N	104°24'25.531"W	polygon
STATE NORTH PLATTE J24-F21-26HNC BHL REV-2 (470'FNL & 1657'FWL, SEC.26)	6377.00	3318.06	87.30	3304648.77	1381764.51	40°22'34.280"N	104°24'23.420"W	point
STATE NORTH PLATTE J24-F21-26HNC LP REV-2 (470'FSL & 1657'FWL, SEC.26)	6377.00	-957.53	30.81	3304644.99	1377488.74	40°21'52.030"N	104°24'24.150"W	point
STATE NORTH PLATTE J24-F21-26HNC BHL REV-3 (470'FNL & 1657'FWL, SEC.26)	6391.00	3318.06	87.30	3304648.77	1381764.51	40°22'34.280"N	104°24'23.420"W	point
STATE NORTH PLATTE J24-F21-26HNC LP REV-3 (470'FSL & 1657'FWL, SEC.26)	6391.00	-957.53	30.81	3304644.99	1377488.74	40°21'52.030"N	104°24'24.150"W	point
SEC.02-T4N-R63W 460'SETBACK	6544.00	25.10	-76.10	3304525.98	1378469.93	40°22'01.740"N	104°24'25.531"W	polygon
SEC.26-T05N-R63W 460' SETBACK	6544.00	3296.02	-486.25	3304075.56	1381735.41	40°22'34.062"N	104°24'30.831"W	polygon
SEC.35-T5N-R63W 460'SETBACK	6544.00	25.10	-76.10	3304525.98	1378469.93	40°22'01.740"N	104°24'25.531"W	polygon



Actual Wellpath Report

STATE NORTH PLATTE J24-F21-26HNC AWP

Page 8 of 9



REFERENCE WELLPATH IDENTIFICATION			
Operator	BONANZA CREEK OIL COMPANY	Slot	SLOT#24 STATE NORTH PLATTE J24-F21-26HNC (1428'FSL & 1614'FWL, SEC.26)
Area	COLORADO	Well	STATE NORTH PLATTE J24-F21-26HNC
Field	WELD COUNTY	Wellbore	STATE NORTH PLATTE J24-F21-26HNC AWB
Facility	SEC.26-T5N-R63W		

WELLPATH COMPOSITION - Ref Wellbore: STATE NORTH PLATTE J24-F21-26HNC AWB Ref Wellpath: STATE NORTH PLATTE J24-F21-26HNC AWP				
Start MD [ft]	End MD [ft]	Positional Uncertainty Model	Log Name/Comment	Wellbore
17.00	1581.00	BHI NaviTrak (Rotating+Axial Corr)	BHI MWD NAVITRAK +ROTATING+AXIAL CORR <130-1581>	STATE NORTH PLATTE J24-F21-26HNC AWB
1581.00	11312.00	BHI AutoTrak Curve (Axial Corr, Short spacing)	BHI ATCURVE +AXIAL CORR+SHORT SPACING <1684-11312>	STATE NORTH PLATTE J24-F21-26HNC AWB
11312.00	11337.00	Blind Drilling (std)	Projection to bit	STATE NORTH PLATTE J24-F21-26HNC AWB



Actual Wellpath Report

STATE NORTH PLATTE J24-F21-26HNC AWP

Page 9 of 9



REFERENCE WELLPATH IDENTIFICATION			
Operator	BONANZA CREEK OIL COMPANY	Slot	SLOT#24 STATE NORTH PLATTE J24-F21-26HNC (1428'FSL & 1614'FWL, SEC.26)
Area	COLORADO	Well	STATE NORTH PLATTE J24-F21-26HNC
Field	WELD COUNTY	Wellbore	STATE NORTH PLATTE J24-F21-26HNC AWB
Facility	SEC.26-T5N-R63W		

WELLPATH COMMENTS				
MD [ft]	Inclination [°]	Azimuth [°]	TVD [ft]	Comment
130.00	0.500	324.380	130.00	FIRST BHI MWD SURVEY
7067.00	87.963	2.388	6393.57	TOP OF PRODUCTION (507'FSL & 1684'FWL, SEC.26, SE/SW)
11312.00	90.000	3.240	6400.00	LAST BHI MWD SURVEY
11337.00	90.000	3.240	6400.00	PROJECTION TO BIT/5.5" CASING (449'FNL & 1665'FWL, SEC.26, NE/NW)