



Bonanza Creek Energy

Surface Post Job Report

State North Platte J24-F21-26HNC

S:26 T:5N R:63W Weld CO

Quote #:

11475

I Execution #:

06635



Bonanza Creek Energy

Attention: Mr. Joel Dill | (720) 633-5871 | JDill@bonanzacrk.com

Bonanza Creek Energy | 410 17th St Suite 1400 | Denver, CO. 80202

Dear Mr. Joel Dill,

Thank you for the opportunity to provide cementing services on this well. BJ Services strives to achieve complete customer satisfaction. If you have any questions regarding the services or data provided, please contact BJ Services at any time.

Sincerely,
Jacob Ojeda
Field Engineer I | (763) 516-3012 | jacob.ojeda@bjservices.com

Field Office 1716 East Allison Rd., Cheyenne WY, 82007
Phone: (307) 638-5585

Sales Office 999 18th St. Suite 1200 Denver, CO 80202
Phone: (281) 408-2361

Cementing Treatment



Start Date	5/11/18	Field Ticket#	06635-P5Y5K90202-07777
End Date	5/11/18	Well	STATE NORTH PLATTE J24-F21-26HNC
Client	BONANZA CREEK ENERGY	API#	05-123-46469
Client Field Rep.	Sam	County	WELD
Service Sup.	Orlando Fuentes	State/Province	CO
District	Cheyenne, WY	Rig	Xtreme 19
Type of Job	Surface	Project ID	PRJ1006660
Execution ID	EXC-06635-P5Y5K902		

WELL GEOMETRY

Type	ID (in)	OD (in)	Wt. (lb/ft)	MD (ft)	TVD (ft)	Excess(%)
Open Hole	13.50			1,636.00	1,636.00	30.00
Casing	8.92	9.63	36.00	1,626.00	1,626.00	

Shoe Length (ft): 42

HARDWARE

Top Plug Used?	Yes	Max Casing Pressure - Rated (psi)	3520
Top Plug Provided By	Customer	Max Casing Pressure - Operated (psi)	1441
Top Plug Size	9.625	Pipe Movement	No
Centralizers Used	Yes	Job Pumped Through	2" iron
Centralizers Quantity	16	Top Connection Thread	LTC
Centralizers Type	Bow Spring	Top Connection Size	9.625
Landing Collar Depth (ft)	1,584		

CIRCULATION PRIOR TO JOB

Well Circulated By	Rig	PV Mud Out	5
Circulation Prior to Job	Yes	YP Mud In	5
Circulation Time (min)	90	YP Mud Out	5
Circulation Rate (bpm)	10	Solids Present at End of Circulation	No
Circulation Volume (bbls)	900	10 sec SGS	3
Lost Circulation Prior to Cement Job	No	10 min SGS	4
Mud Density In (ppg)	8.9	30 min SGS	5
Mud Density Out (ppg)	8.9	Flare Prior to/during the Cement Job	No
PV Mud In	5	Gas Present	No

TEMPERATURE

Ambient Temperature (°F)	50	Slurry Cement Temperature (°F)	50
Mix Water Temperature (°F)	50	Flow Line Temperature (°F)	96

Cementing Treatment



BJ FLUID DETAILS

Fluid Type	Fluid Name	Density (ppg)	Yield (Cu Ft/sk)	H2O Req. (gals/sk)	Length (Ft)	Vol (sk)	Vol (Cu Ft)	Vol (bbls)
Spacer / Pre Flush / Flush	Water (Pre-flush)	8.3308						20.0000
Tail Slurry	BJCem S100.3.XC	14.5000	1.3901	6.78	1,600.00	744	1,034.0000	184.1000
Displacement Final	Water	8.3300					0.0000	120.4000

Fluid Type	Fluid Name	Component	Concentration	UOM
Tail Slurry	BJCem S100.3.XC	CEMENT, ASTM TYPE III	100.0000	PCT
Tail Slurry	BJCem S100.3.XC	FOAM PREVENTER, FP-13L	0.0300	GALS/SK

TREATMENT SUMMARY

Fluid	Rate (bpm)	Fluid Vol. (bbls)
Water (Pre-flush)	3.00	20.00
BJCem S100.3.XC	6.00	184.10
Water	6.00	120.40

DISPLACEMENT AND END OF JOB SUMMARY

Displaced By	BJ services	Amount of Cement Returned/Reversed	20
Calculated Displacement Volume (bbls)	122.44	Method Used to Verify Returns	Visual
Actual Displacement Volume (bbls)	120	Amount of Spacer to Surface	20
Did Float Hold?	Yes	Pressure Left on Casing (psi)	0
Bump Plug	Yes	Amount Bled Back After Job	0.5
Bump Plug Pressure (psi)	1441	Total Volume Pumped (bbls)	324.1
Were Returns Planned at Surface	Yes	Top Out Cement Spotted	No
Cement returns During Job	Yes	Lost Circulation During Cement Job	No

EVENT LOG

Service Line

Cementing

Client

BONANZA CREEK ENERGY

District

Cheyenne, WY

Quotes:

QUO-11475-V2T6Z5

Plans:

ORD-06635-P5Y5K9

Executions:

EXC-06635-P5Y5K902



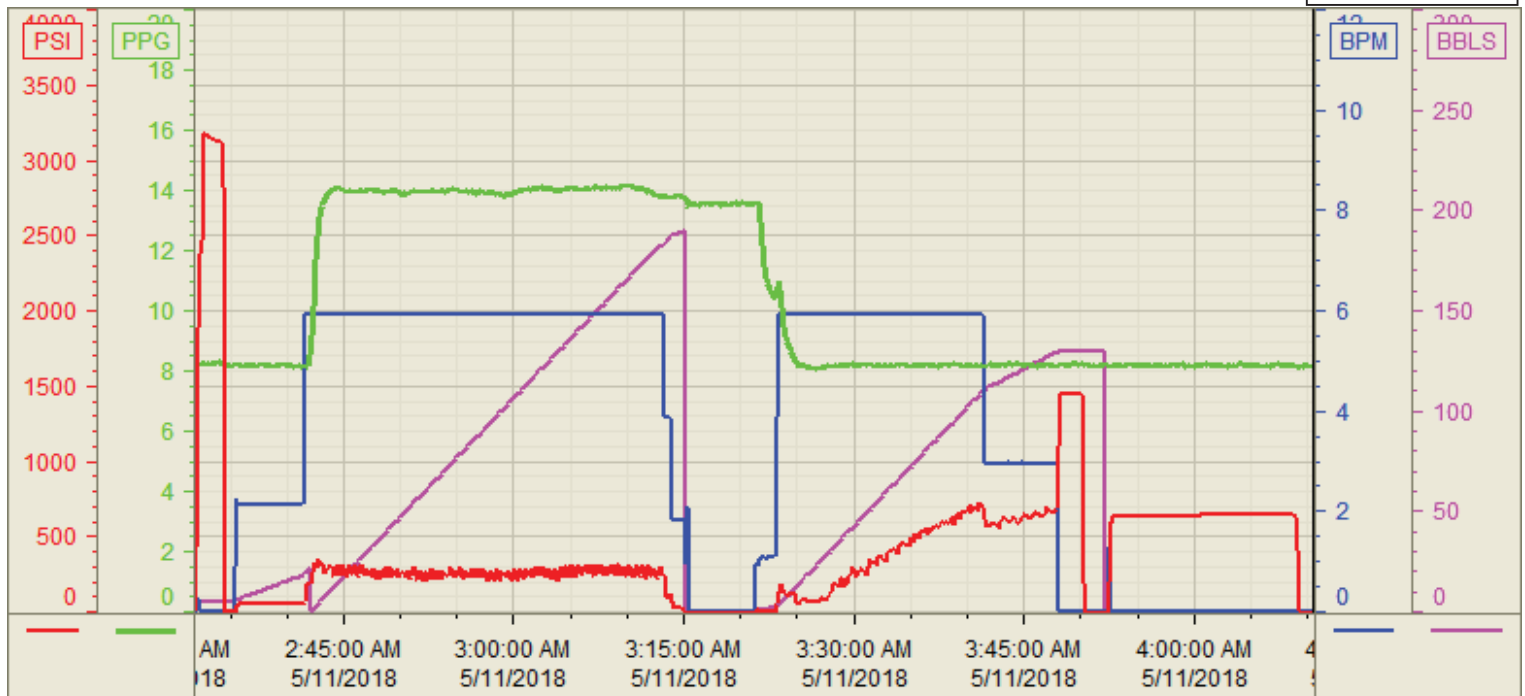
Well	Job Type	BJ Sup.	Start Dt./Time	Category	Event	Density (ppg)	Pump Rate	Pump Vol(bbls)	Pipe Pressure	Comments
STATE NORTH PLATTE J24-F21-26HNC	Surface	Orlando Fuentes	05/10/2018 19:00	Mobilization	Callout					Bj services crew gets called out (Requested time on location was 2300 hrs)
STATE NORTH PLATTE J24-F21-26HNC	Surface	Orlando Fuentes	05/10/2018 23:00	Mobilization	Arrive on Location					Bj services crew arrives to location - rig runing casing
STATE NORTH PLATTE J24-F21-26HNC	Surface	Orlando Fuentes	05/10/2018 23:30	Operational	Safety Meeting					Bj services crew had a pre rig up meeting
STATE NORTH PLATTE J24-F21-26HNC	Surface	Orlando Fuentes	05/11/2018 1:30	Operational	Rig Up					Bj services crew spots units and rigs up all equipment and iron
STATE NORTH PLATTE J24-F21-26HNC	Surface	Orlando Fuentes	05/11/2018 2:00	Operational	Safety Meeting					Bj services crew had a safety meeting with rig hands and Co Man went over pump procedure
STATE NORTH PLATTE J24-F21-26HNC	Surface	Orlando Fuentes	05/11/2018 2:40	Operational	Pressure Test				3,000.00	Pressure test pumps and lines to 3000 psi
STATE NORTH PLATTE J24-F21-26HNC	Surface	Orlando Fuentes	05/11/2018 2:42	Operational	Pump Spacer	8.3300	3.00	20.00	43.00	Pumped 20 bbl h2o flush w/dye at 3 bpm w/ 43 psi
STATE NORTH PLATTE J24-F21-26HNC	Surface	Orlando Fuentes	05/11/2018 2:49	Operational	Pumping Cement	14.5000	6.00	184.19	334.00	Pumped 184.19 bbl of primary cement (744 sks 14.5 ppg 1.3901 yld 6.78 g/sk) at 6 bpm w/334 psi
STATE NORTH PLATTE J24-F21-26HNC	Surface	Orlando Fuentes	05/11/2018 3:20	Operational	End Pumping					Shut Down Pumping Cement
STATE NORTH PLATTE J24-F21-26HNC	Surface	Orlando Fuentes	05/11/2018 3:25	Operational	Drop Top Plug					Drop top plug
STATE NORTH PLATTE J24-F21-26HNC	Surface	Orlando Fuentes	05/11/2018 3:28	Operational	Pump Displacement	8.3300	6.00	0.00	135.00	Start pumping displacement at 6 bpm w/ 135 psi
STATE NORTH PLATTE J24-F21-26HNC	Surface	Orlando Fuentes	05/11/2018 3:49	Operational	Cement Back to Surface	8.3300	3.00	100.00	633.00	At 100 bbls away got cement back to surface and slow down rate to 3 bpm w/ 633 psi
STATE NORTH PLATTE J24-F21-26HNC	Surface	Orlando Fuentes	05/11/2018 3:55	Operational	Land Plug	8.3300	3.00	20.00	907.00	Land plug at 120 bbls away final circ pressure was 907 psi bump pluie to 1441 psi
STATE NORTH PLATTE J24-F21-26HNC	Surface	Orlando Fuentes	05/11/2018 3:58	Operational	Check Floats					Check floats got .5 bbl back
STATE NORTH PLATTE J24-F21-26HNC	Surface	Orlando Fuentes	05/11/2018 4:00	Operational	Other (See comment)				629.00	Casing test 629 psi hold for 15 min
STATE NORTH PLATTE J24-F21-26HNC	Surface	Orlando Fuentes	05/11/2018 4:20	Operational	Safety Meeting					Bj services crew had a pre rig down safety meeting
STATE NORTH PLATTE J24-F21-26HNC	Surface	Orlando Fuentes	05/11/2018 5:30	Operational	Rig Down					Bj services crew rigs down all iron and equipment
STATE NORTH PLATTE J24-F21-26HNC	Surface	Orlando Fuentes	05/11/2018 6:00	Operational	Leave Location					Bj services crew departs location
STATE NORTH PLATTE J24-F21-26HNC	Surface	Orlando Fuentes	05/11/2018 6:05	Operational	Other (See comment)					Total cement to surface - 20 bbls

Customer: Bonanza Creek
Well Number: J24-F21-26HNC
Lease Info: State North Platte



Print Date/Time

5/11/2018 4:49:28 AM



	Name	Y value	X value/time stamp	Tag name Y
1	DS - Press (PSI)	-8.7	5/11/2018 4:10:32 AM	CementorDS_DISCHARGE_PRESS_DIAL
2	DH - Density (PPG)		5/11/2018 4:10:30 AM i.	CementorDENSITY2_ACTUAL_RATE
3	Combined Rate (BPM)	0.00	5/11/2018 4:10:32 AM	CementorFlow_Combined
4	Down Hole Total (BBLs)	0.3	5/11/2018 4:10:32 AM	CementorDOWNHOLE_FLOW_TOTAL
5				

Source: Control1 4:49:24 AM