



# Bonanza Creek Energy

## Production Post Job Report

---

State North Platte J24-F21-26HNC

S:26 T:5N R:63W Weld CO

Quote #:

11618

| Execution #:

07458

---



## Bonanza Creek Energy

Attention: Mr. Joel Dill | (720) 633-5871 | JDill@bonanzacrk.com

Bonanza Creek Energy | 410 17th St Suite 1400 | Denver, CO. 80202

---

Dear Mr. Joel Dill,

Thank you for the opportunity to provide cementing services on this well. BJ Services strives to achieve complete customer satisfaction. If you have any questions regarding the services or data provided, please contact BJ Services at any time.

Sincerely,  
Jacob Ojeda  
Field Engineer I | (763) 516-3012 | jacob.ojeda@bjservices.com

Field Office 1716 East Allison Rd., Cheyenne WY, 82007  
Phone: (307) 638-5585

Sales Office 999 18th St. Suite 1200 Denver, CO 80202  
Phone: (281) 408-2361

---

## Cementing Treatment



<b>Start Date</b>	6-6-2018	<b>Field Ticket#</b>	07458-X9G7Y70202-12514
<b>End Date</b>	6-6-2018	<b>Well</b>	STATE NORTH PLATTE J24-F21-26HNC
<b>Client</b>	BONANZA CREEK ENERGY	<b>API#</b>	05-123-46469
<b>Client Field Rep.</b>	Sam	<b>County</b>	WELD
<b>Service Sup.</b>	Albert Snyder	<b>State/Province</b>	CO
<b>District</b>	Cheyenne, WY	<b>Rig</b>	Xtreme 19
<b>Type of Job</b>	Long String	<b>Project ID</b>	PRJ1007446
<b>Execution ID</b>	EXC-07458-X9G7Y702		

### WELL GEOMETRY

Type	ID (in)	OD (in)	Wt. (lb./ft.)	MD (ft.)	TVD (ft.)	Excess (%)
Previous Casing	8.92	9.63	36.00	1,600.00	1,600.00	
Open Hole	8.50			11,326.00	6,377.00	12.50
Casing	4.89	5.50	17.00	11,326.00	6,377.00	

Shoe Length (ft.): 42

### HARDWARE

<b>Top Plug Used?</b>	Yes	<b>Max Casing Pressure - Rated (psi)</b>	5320
<b>Top Plug Provided By</b>	3rd party	<b>Max Casing Pressure - Operated (psi)</b>	3000
<b>Top Plug Size</b>	5.5	<b>Pipe Movement</b>	None
<b>Landing Collar Depth (ft.)</b>	11,284	<b>Job Pumped Through</b>	Cement Head
<b>Tool Type</b>	Float Collar	<b>Top Connection Thread</b>	8RD
<b>Tool Depth (ft.)</b>	11284	<b>Top Connection Size</b>	5.5

### CIRCULATION PRIOR TO JOB

<b>Well Circulated By</b>	Rig	<b>PV Mud Out</b>	10
<b>Circulation Prior to Job</b>	Yes	<b>YP Mud In</b>	17
<b>Circulation Time (min)</b>	120	<b>YP Mud Out</b>	17
<b>Circulation Rate (bpm)</b>	8	<b>Solids Present at End of Circulation</b>	No
<b>Circulation Volume (bbls)</b>	960	<b>10 sec SGS</b>	8
<b>Lost Circulation Prior to Cement Job</b>	No	<b>10 min SGS</b>	8
<b>Mud Density In (ppg)</b>	9.7	<b>30 min SGS</b>	11
<b>Mud Density Out (ppg)</b>	9.7	<b>Flare Prior to/during the Cement Job</b>	No
<b>PV Mud In</b>	10	<b>Gas Present</b>	No

### TEMPERATURE

<b>Ambient Temperature (°F)</b>	95	<b>Slurry Cement Temperature (°F)</b>	80
<b>Mix Water Temperature (°F)</b>	75		

## Cementing Treatment



### BJ FLUID DETAILS

Fluid Type	Fluid Name	Density (ppg)	Yield (Cu Ft/sk)	H2O Req. (gals/sk)	Planned Top of Fluid (Ft)	Length (Ft)	Vol (sk)	Vol (Cu Ft)	Vol (bbls)
Spacer / Pre Flush / Flush	IntegraGuard EZ Spacer	12.0000			0.00				60.0000
Lead Slurry	BJCem P100.3.01C	12.5000	2.1515	12.23	0.00	5,000.00	608	1,307.0000	232.7000
Tail Slurry	BJCem P50.6.02C	13.5000	1.4772	7.45	5,000.00	6,299.00	1,103	1,629.0000	290.1000
Displacement 2	Retarded Water	8.3337			13,244.00	0.00	0	0.0000	20.0000
Displacement Final	Displacement Final (Water)	8.3308			0.00			0.0000	241.7000

Fluid Type	Fluid Name	Component	Concentration	UOM
Spacer / Pre Flush / Flush	IntegraGuard EZ Spacer	SAND, S-8, Silica Flour, 200 Mesh	242.2100	PPB
Spacer / Pre Flush / Flush	IntegraGuard EZ Spacer	EXTENDER, BENTONITE	5.0000	PPB
Spacer / Pre Flush / Flush	IntegraGuard EZ Spacer	GELLANT WATER, GW-86	1.0000	PPB
Spacer / Pre Flush / Flush	IntegraGuard EZ Spacer	SPACER SURFACTANT, SS-247	0.5000	GPB
Spacer / Pre Flush / Flush	IntegraGuard EZ Spacer	RETARDER, R-31	0.2700	PPB
Spacer / Pre Flush / Flush	IntegraGuard EZ Spacer	SPACER SURFACTANT, SS-267	0.5000	GPB
Lead Slurry	BJCem P100.3.01C	BONDING AGENT, BA-60	0.4000	BWOB
Lead Slurry	BJCem P100.3.01C	FLUID LOSS, FL-24	0.3000	BWOB
Lead Slurry	BJCem P100.3.01C	CEMENT, ASTM TYPE III	100.0000	PCT
Lead Slurry	BJCem P100.3.01C	GELLANT WATER, GW-86	0.2000	BWOB
Lead Slurry	BJCem P100.3.01C	IntegraSeal CELLO	0.1300	LBS/SK
Lead Slurry	BJCem P100.3.01C	RETARDER, R-31	0.1100	BWOB
Lead Slurry	BJCem P100.3.01C	FOAM PREVENTER, FP-25	0.3000	BWOB
Lead Slurry	BJCem P100.3.01C	EXTENDER, BENTONITE	4.0000	BWOB
Tail Slurry	BJCem P50.6.02C	CEMENT, CLASS G	50.0000	PCT
Tail Slurry	BJCem P50.6.02C	GELLANT WATER, GW-86	0.1000	BWOB
Tail Slurry	BJCem P50.6.02C	RETARDER, SR-20	0.0700	BWOB
Tail Slurry	BJCem P50.6.02C	Flyash (Rockies)	50.0000	PCT
Tail Slurry	BJCem P50.6.02C	FLUID LOSS, FL-66	0.2000	BWOB
Tail Slurry	BJCem P50.6.02C	EXTENDER, BENTONITE	2.0000	BWOB
Tail Slurry	BJCem P50.6.02C	FOAM PREVENTER, FP-25	0.3000	BWOB
Displacement 2	Retarded Water	RETARDER, R-8L	0.5000	GPB
Displacement 2	Retarded Water	BIOCIDE, BIOC11139W	0.0100	GPB
Displacement Final	Displacement Final (Water)	BIOCIDE, BIOC11139W	0.0100	GPB

## Cementing Treatment



### TREATMENT SUMMARY

Fluid	Rate (bpm)	Fluid Vol. (bbls)
IntegraGuard EZ Spacer	2.5	60.00
BJCem P100.3.01C	5.00	232.70
BJCem P50.6.02C	6.00	290.10
Retarded Water	6.00	20.00
Displacement Final (Water)	8.00	241.70

### DISPLACEMENT AND END OF JOB SUMMARY

Displaced By	BJ Services	Amount of Cement Returned/Reversed	62
Calculated Displacement Volume (bbls)	263	Method Used to Verify Returns	Visual
Actual Displacement Volume (bbls)	263	Amount of Spacer to Surface	60
Did Float Hold?	Yes	Amount Bled Back After Job	3
Bump Plug	Yes	Total Volume Pumped (bbls)	844.5
Bump Plug Pressure (psi)	3000	Top Out Cement Spotted	No
Were Returns Planned at Surface	Yes	Lost Circulation During Cement Job	No
Cement returns During Job	Yes		

## Service Line

Cementing

## Client

BONANZA CREEK ENERGY

## District

Cheyenne, WY

## Quotes:

QUO-11618-R5S2J9

## Plans:

ORD-07458-X9G7Y7

## Executions:

EXC-07458-X9G7Y702

## EVENT LOG

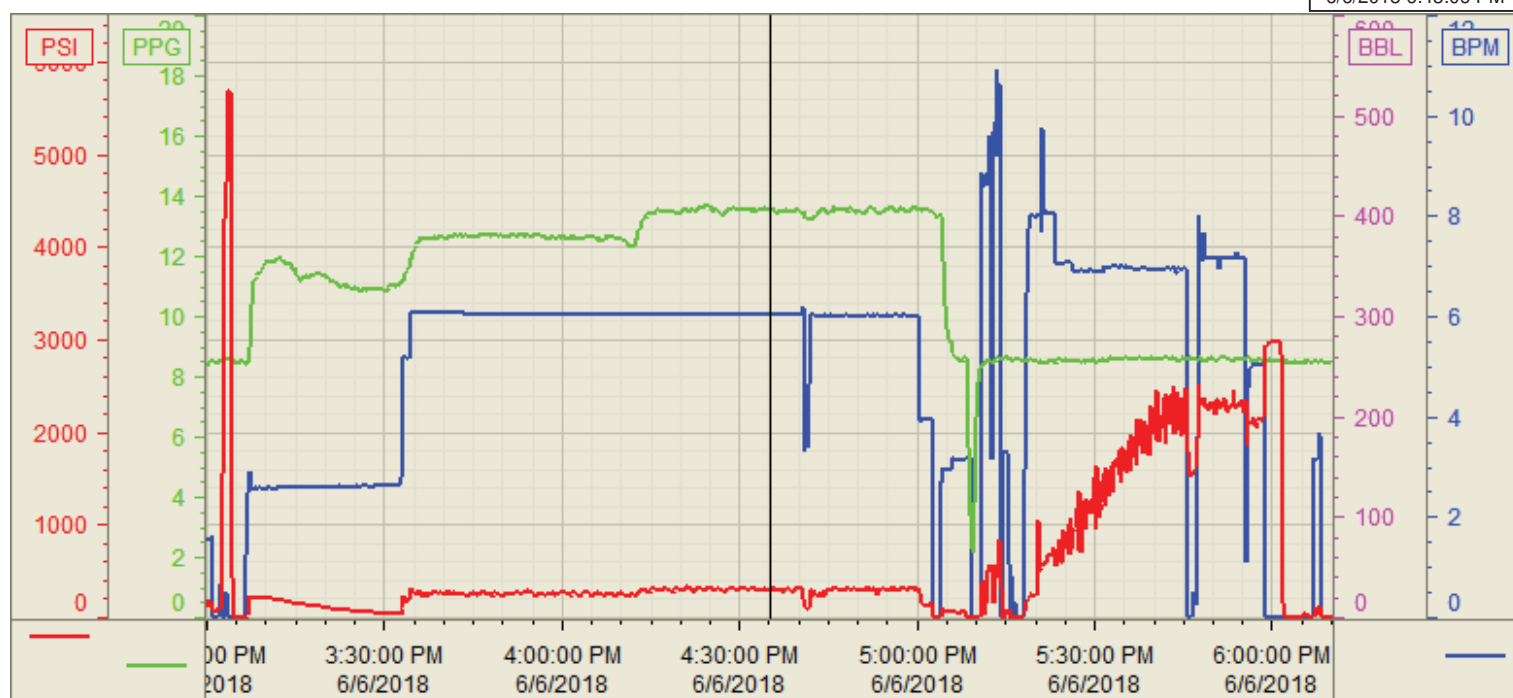


Well	Job Type	BJ Sup.	Start Dt./Time	Category	Event	Density (ppg)	Pump Rate (bpm)	Pump Vol(bbls)	Pipe Pressure(psi)	Comments
STATE NORTH PLATTE J24-F21-26HNC	Long String	Albert Snyder	06/06/2018 5:30	Mobilization	Callout					CALLED OUT AT 5:30 AM REQUESTED ON LOCATION AT 10:00AM
STATE NORTH PLATTE J24-F21-26HNC	Long String	Albert Snyder	06/06/2018 7:00	Operational	Safety Meeting					Steacs journey discussed route to location
STATE NORTH PLATTE J24-F21-26HNC	Long String	Albert Snyder	06/06/2018 8:00	Mobilization	Leave Location					Depart and travel in convoy
STATE NORTH PLATTE J24-F21-26HNC	Long String	Albert Snyder	06/06/2018 9:30	Operational	Arrive on Location					Arrived on location at 9:30 am 30 minutes early
STATE NORTH PLATTE J24-F21-26HNC	Long String	Albert Snyder	06/06/2018 10:00	Operational	Safety Meeting					Steacs briefing rig up
STATE NORTH PLATTE J24-F21-26HNC	Long String	Albert Snyder	06/06/2018 10:20	Operational	Rig Up					Rigged up using safety and teamwork
STATE NORTH PLATTE J24-F21-26HNC	Long String	Albert Snyder	06/06/2018 11:00	StandBy	Customer					Waiting on casing to be ran and circulation to be done prior to the job
STATE NORTH PLATTE J24-F21-26HNC	Long String	Albert Snyder	06/06/2018 15:00	Operational	Safety Meeting					Discussed job with rig crew and steacs pumping
STATE NORTH PLATTE J24-F21-26HNC	Long String	Albert Snyder	06/06/2018 15:25	Operational	Other (See comment)	8.3300	3.00	3.00	250.00	Filled lines with fresh water 3 bbls
STATE NORTH PLATTE J24-F21-26HNC	Long String	Albert Snyder	06/06/2018 15:27	Operational	Pressure Test	8.3300	1.00	1.00	5,000.00	Tested lines to 5000 psi and holding
STATE NORTH PLATTE J24-F21-26HNC	Long String	Albert Snyder	06/06/2018 15:30	Operational	Pump Spacer	12.0000	3.00	20.00	40.00	Pump spacer at 12#
STATE NORTH PLATTE J24-F21-26HNC	Long String	Albert Snyder	06/06/2018 15:34	Operational	Pump Spacer	11.5000	3.00	20.00	40.00	Pump spacer at 11.5#
STATE NORTH PLATTE J24-F21-26HNC	Long String	Albert Snyder	06/06/2018 15:37	Operational	Pump Spacer	11.0000	3.00	20.00	40.00	Pump spacer at 11#
STATE NORTH PLATTE J24-F21-26HNC	Long String	Albert Snyder	06/06/2018 15:40	Operational	Pump Lead Cement	12.5000	5.00	233.00	400.00	Mixa and pump 608 sks of p-100 at 12.5# with 2.15 yield and 12.23 water req.
STATE NORTH PLATTE J24-F21-26HNC	Long String	Albert Snyder	06/06/2018 16:28	Operational	Pump Tail Cement	13.5000	6.00	289.00	520.00	Mix and pump 1103 sks of p-50 at 13.5# with 1.47 yield and 7.45 water req.
STATE NORTH PLATTE J24-F21-26HNC	Long String	Albert Snyder	06/06/2018 17:34	Operational	Drop Top Plug					Dropped there plug washed to the pit
STATE NORTH PLATTE J24-F21-26HNC	Long String	Albert Snyder	06/06/2018 17:36	Operational	Pump Displacement	8.3300	6.00	20.00	400.00	20 bbls of R8L water
STATE NORTH PLATTE J24-F21-26HNC	Long String	Albert Snyder	06/06/2018 17:38	Operational	Pump Displacement	8.3300	8.00	50.00	1,700.00	Fresh water
STATE NORTH PLATTE J24-F21-26HNC	Long String	Albert Snyder	06/06/2018 17:45	Operational	Pump Displacement	8.3300	8.00	100.00	1,800.00	fresh water good circulation
STATE NORTH PLATTE J24-F21-26HNC	Long String	Albert Snyder	06/06/2018 17:56	Operational	Pump Displacement	8.3300	8.00	150.00	2,000.00	Got back spacer to the surface 60bbls
STATE NORTH PLATTE J24-F21-26HNC	Long String	Albert Snyder	06/06/2018 18:07	Operational	Pump Displacement	8.3300	8.00	200.00	2,010.00	Got back cement to the surface 62 bbls
STATE NORTH PLATTE J24-F21-26HNC	Long String	Albert Snyder	06/06/2018 18:12	Operational	Pump Displacement	8.3300	5.00	240.00	2,000.00	Fresh water
STATE NORTH PLATTE J24-F21-26HNC	Long String	Albert Snyder	06/06/2018 18:19	Operational	Land Plug	8.3300	5.00	262.00	3,000.00	Landed the plug at calculated
STATE NORTH PLATTE J24-F21-26HNC	Long String	Albert Snyder	06/06/2018 18:24	Operational	Check Floats					Float is holding flowded back
STATE NORTH PLATTE J24-F21-26HNC	Long String	Albert Snyder	06/06/2018 18:45	Operational	Safety Meeting					Steacs briefing rig down
STATE NORTH PLATTE J24-F21-26HNC	Long String	Albert Snyder	06/06/2018 19:00	Operational	Rig Down					Rigged down using team work and safety
STATE NORTH PLATTE J24-F21-26HNC	Long String	Albert Snyder	06/06/2018 19:45	Operational	Safety Meeting					Journey steacs briefing and after action review
STATE NORTH PLATTE J24-F21-26HNC	Long String	Albert Snyder	06/06/2018 20:00	Mobilization	Leave Location					Leave location in convoy obey all speed limits

Customer: Bonanza Creek  
Well Number: J24-F21-26HNC  
Lease Info: State North Platte



Print Date/Time  
6/6/2018 6:43:06 PM



	Name	Y value	X value/time stamp	Tag name Y
1	DS - Press (PSI)	304.0	6/6/2018 4:35:08 PM	Cementer\DS_DISCHARGE_PRESS_DIAL
2	DH - Density (PPG)	13.53	6/6/2018 4:35:04 PM	Cementer\DENSITY2_ACTUAL_RATE
3	Combined Rate	6.06	6/6/2018 4:35:06 PM	Cementer\Flow_Combined
4				
5				

Source: Control1 6:43:00 PM