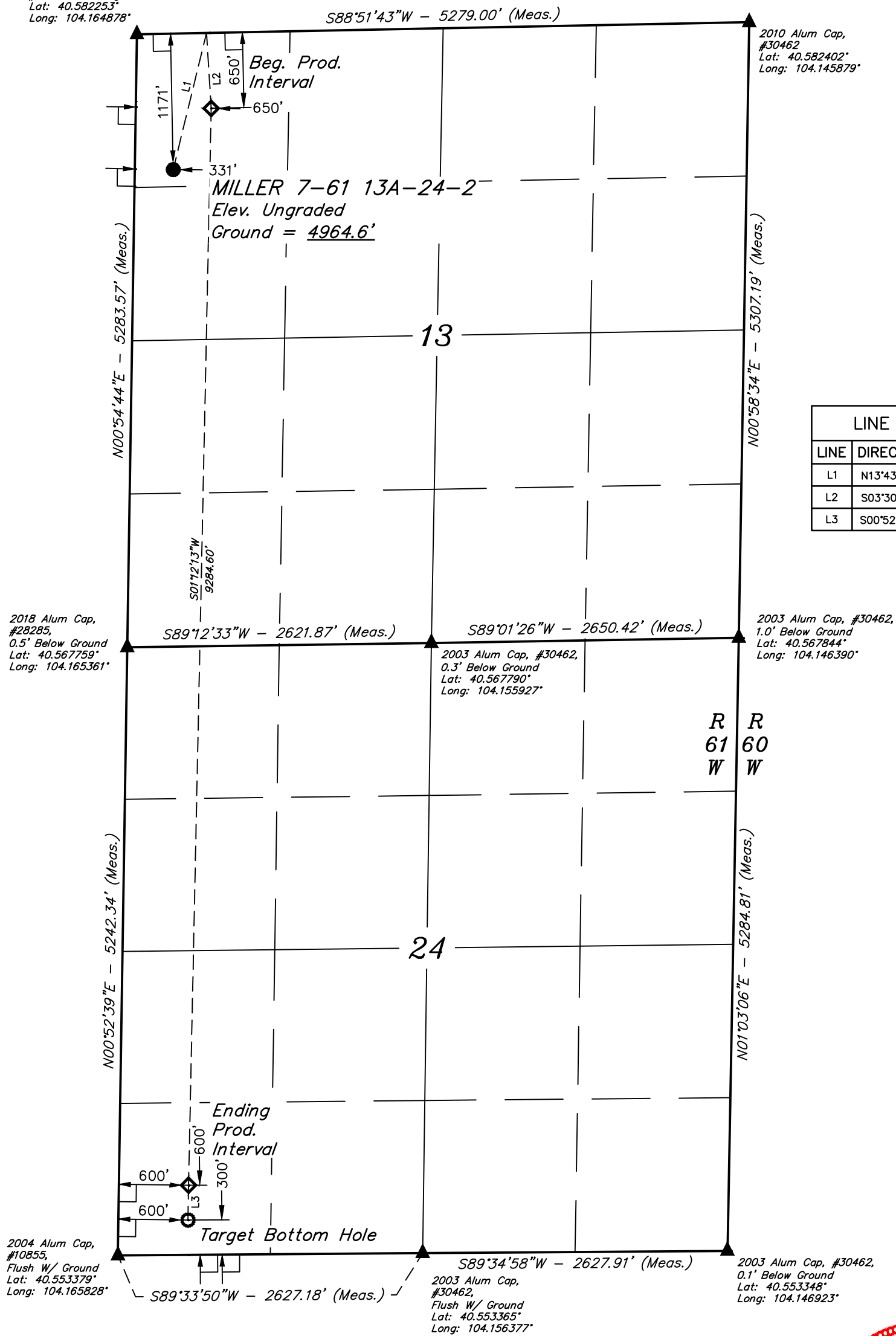


*T7N, R61W, 6th P.M.*

- 2010 Alum Cap,  
#30462, 0.5' High  
Lat: 40.582253°  
Long: 104.164878°



LINE TABLE		
LINE	DIRECTION	LENGTH
L1	N13°43'34"E	1211.73'
L2	S03°30'47"E	650.56'
L3	S00°52'39"W	300.08'

**PDOP = 1.3**



SURFACE LOCATION 1171' FNL 331' FWL	BEG. PROD. INTERVAL 650' FNL 650' FWL	ENDING PROD. INTERVAL 600' FSL 600' FWL	TARGET BOTTOM HOLE 300' FSL 600' FWL
<b>NAD 83 (SURFACE LOCATION)</b>	<b>NAD 83 (BEG. PROD. INTERVAL)</b>	<b>NAD 83 (ENDING PROD. INTERVAL)</b>	<b>NAD 83 (TARGET BOTTOM HOLE)</b>
LATITUDE = 40°34'44.57" (40.579048°)	LATITUDE = 40°34'49.75" (40.580487°)	LATITUDE = 40°33'18.08" (40.555022°)	LATITUDE = 40°33'15.12" (40.554199°)
LONGITUDE = 104°09'49.65" (104.163793°)	LONGITUDE = 104°09'45.35" (104.162597°)	LONGITUDE = 104°09'49.02" (104.163616°)	LONGITUDE = 104°09'49.11" (104.163642°)
<b>NAD 27 (SURFACE LOCATION)</b>	<b>NAD 27 (BEG. PROD. INTERVAL)</b>	<b>NAD 27 (ENDING PROD. INTERVAL)</b>	<b>NAD 27 (TARGET BOTTOM HOLE)</b>
LATITUDE = 40°34'44.63" (40.579063°)	LATITUDE = 40°34'49.81" (40.580502°)	LATITUDE = 40°33'18.13" (40.555037°)	LATITUDE = 40°33'15.17" (40.554214°)
LONGITUDE = 104°09'47.84" (104.163288°)	LONGITUDE = 104°09'43.53" (104.162092°)	LONGITUDE = 104°09'47.20" (104.163110°)	LONGITUDE = 104°09'47.29" (104.163137°)
<b>STATE PLANE NAD 83 (CO. NORTH)</b>	<b>STATE PLANE NAD 83 (CO. NORTH)</b>	<b>STATE PLANE NAD 83 (CO. NORTH)</b>	<b>STATE PLANE NAD 83 (CO. NORTH)</b>
N: 1456584.66' E: 3371150.58'	N: 1457114.09' E: 3371474.92'	N: 1447833.56' E: 3371331.73'	N: 1447533.59' E: 3371328.81'
<b>STATE PLANE NAD 27 (CO. NORTH)</b>	<b>STATE PLANE NAD 27 (CO. NORTH)</b>	<b>STATE PLANE NAD 27 (CO. NORTH)</b>	<b>STATE PLANE NAD 27 (CO. NORTH)</b>
N: 456584.28' E: 2371300.68'	N: 457113.70' E: 2371625.02'	N: 447833.34' E: 2371481.94'	N: 447533.38' E: 2371479.02'

CERTIFICATE

THE ABOVE DEED WAS PREPARED FROM FIELD  
RECORDS MADE BY ME OR UNDER MY SUPERVISION  
TRUE AND CORRECT TO THE BEST OF MY

REGISTERED LAND SURVEYOR  
REGISTRATION NO. 28285  
STATE OF COLORADO  
08-02-18

REV: 1    08-02-18    C.IVIE    (BPI MOVE)

**BASIS OF BEARINGS**  
TRANSVERSE MERCATOR PROJECTION WITH  
A CENTRAL MERIDIAN OF W105°00'00".

**BASIS OF ELEVATION**  
OPUS SOLUTION GENERATED NAVD 88



**UELS, LLC**  
Corporate Office \* 85 South 200 East  
Vernal, UT 84078 \* (435) 789-1017



## BISON OIL & GAS II

**MILLER 7-61 13A-24-2**  
**NW 1/4 NW 1/4, SECTION 13, T7N, R61W, 6th P.M.**  
**WELD COUNTY, COLORADO**

<b>SURVEYED BY</b>	MATTHEW MILLER, D.E.	07-03-18	<b>SCALE</b>
<b>DRAWN BY</b>	C.IVIE	07-12-18	1" = 1000'

# WELL LOCATION PLAT