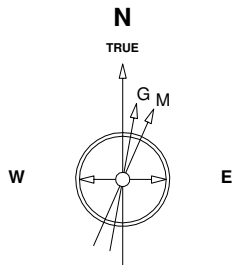


Great Western Operating Company, LLC

Location Colorado
Field Wattenburg
Installation B-Farm
Slot E-16 - B-Farm LD 18-391HNX
Well B-Farm LD 18-391HNX
Wellbore B-Farm LD 18-391HNX (PWB)

Created by admin
Date plotted 10-Nov-2016

Plot reference is B-Farm LD 18-391HNX (PWB).
Ref wellpath is B-Farm LD 18-391HNX (PWP#1).
Coordinates are in Feet reference E-16 - B-Farm LD 18-391HNX.
True Vertical Depths are reference Rig Datum.
Measured Depths are reference Rig Datum.
Rig Datum: Planned Datum #1
Rig Datum to Mean Sea Level: 20.00 ft.
Plot North is aligned to TRUE North.

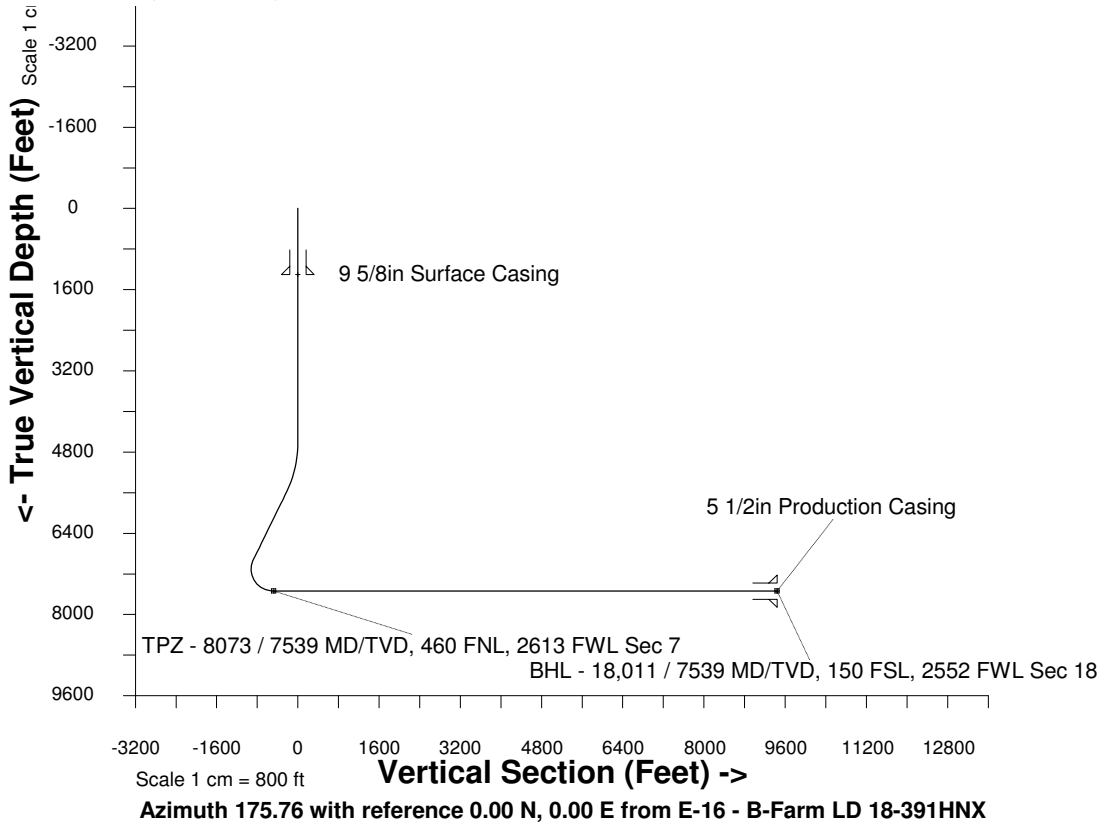


Scale 1 cm = 300 ft

East (Feet) ->

-3600 -3000 -2400 -1800 -1200 -600 0 600 1200 1800 2400 3000 3600 4200

8-Sep-2016
IGRF Model [1900.0-2020.0] Dip: 66.51 deg Field: 52284.8 nT
Lat: N39 59 3.0300 Long: W104 56 2.5008 Elev: 0.00 ft
Magnetic North is 8.35 deg East of TRUE North
To correct azimuth from Magnetic to TRUE add 8.35 deg



WELL PROFILE DATA

Point	MD	Inc	Azi	TVD	North	East	deg/100ft	V. Sect
Tie on	0.00	0.00	0.00	0.00	S 0.00	W 0.00		0.00
KOP	4621.00	0.00	27.54	4621.00	S 0.00	W 0.00	0.00	0.00
End of Build	5620.85	30.00	27.54	5575.80	N 226.82	E 118.26	9.84	-217.45
End of Hold	7179.08	30.00	27.54	6925.33	N 917.58	E 478.41	0.00	-879.68
Target TPZ - ... Sec 7	8073.21	90.00	179.70	7539.00	N 523.12	E 645.92	42.65	-473.91
T.D. & Target BHL...	18011.41	90.00	179.70	7539.00	S 9414.95	E 698.32	0.00	9440.81

