



July 26, 2018

Ms. Julie Murphy, Director
Colorado Oil & Gas Conservation Commission
1120 Lincoln Street, Ste. 801
Denver, Colorado 80203

RE: Rule 318.A.e.

Raindance 29E-10-3N Well

SE/4 SE/4, Section 30, Township 6N, Range 67W, Weld County, CO

Dear Ms. Murphy,

Extraction Oil and Gas, Inc. (Extraction) is planning to drill the captioned horizontal well in accordance with the provision of COGCC Rule 318A.e.

The spacing unit will consist of the 160-acres comprised of Section 29: S/2S/2, Township 6 North, Range 67 West, 6th P.M. and target the Niobrara formation. The well spacing unit is depicted on the enclosed spacing unit exhibit.

Extraction received an objection from one Owner within the proposed spacing unit for the Raindance 29E-10-3N well. Extraction will steer the subject wellbore away from the Objector's property lines to avoid penetrating his or her minerals. With the updated wellbore path the subject Owner's objection is no longer valid.

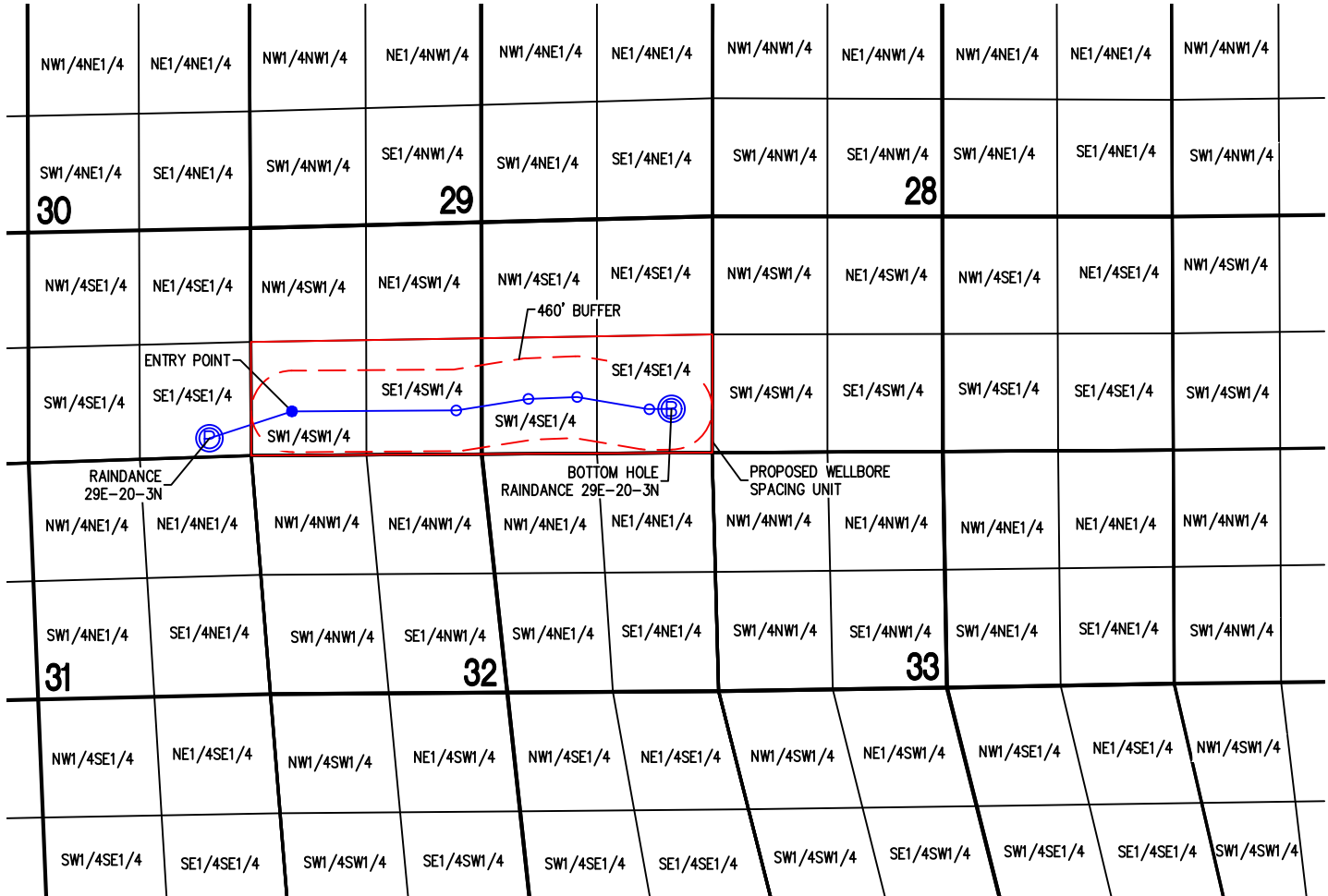
Extraction hereby certifies to the Director that all Owners within the proposed spacing unit above were notified and 30 days have passed now with no valid objections.

Sincerely,

A handwritten signature in blue ink, appearing to read "B. Lamond", is positioned above the typed name.

Bonnie Lamond
Regulatory Analyst
Extraction Oil & Gas, Inc.

WELL BORE SPACING UNIT RAINDANCE PAD RAINDANCE 29E-20-3N



SURFACE LOCATION

SEC. 30, T6N, R67W
 LATITUDE = 40.451272°
 LONGITUDE = -104.928193°
 210' FSL, 471' FEL

BOTTOM HOLE LOCATION

SEC. 29, T6N, R67W
 LATITUDE = 40.452090°
 LONGITUDE = -104.909475°
 495' FSL, 460' FEL

ENTRY POINT LOCATION

SEC. 29, T6N, R67W
 LATITUDE = 40.452089°
 LONGITUDE = -104.924847°
 495' FSL, 460' FWL

NOTES:

- 1) THIS SKETCH DOES NOT REPRESENT A BOUNDARY SURVEY.
- 2) THE DATUM FOR THE LATITUDES AND LONGITUDES ON THIS SKETCH IS NAD83.

NOTES:

- ⊙ - PROPOSED WELL HEAD
- ⊙ - PROPOSED BOTTOM HOLE
- - ENTRY POINT
- - ANGLE POINT



DRAWN BY	RPM	CHECKED BY	AAD
INITIAL SUBMITTAL	2/14/2018		
REVISED	7/11/2018		
DRAWING SIZE	8.5" X 11"		
JOB NO.	EXT06N67W30-01		
SHEET	1 OF 1		

Engineering - Planning - Surveying

4007 S. LINCOLN AVENUE, SUITE 405 • LOVELAND, COLORADO 80537
 P: 970.363.7600 • F: 970.363.7601 • www.baselinecorp.com

