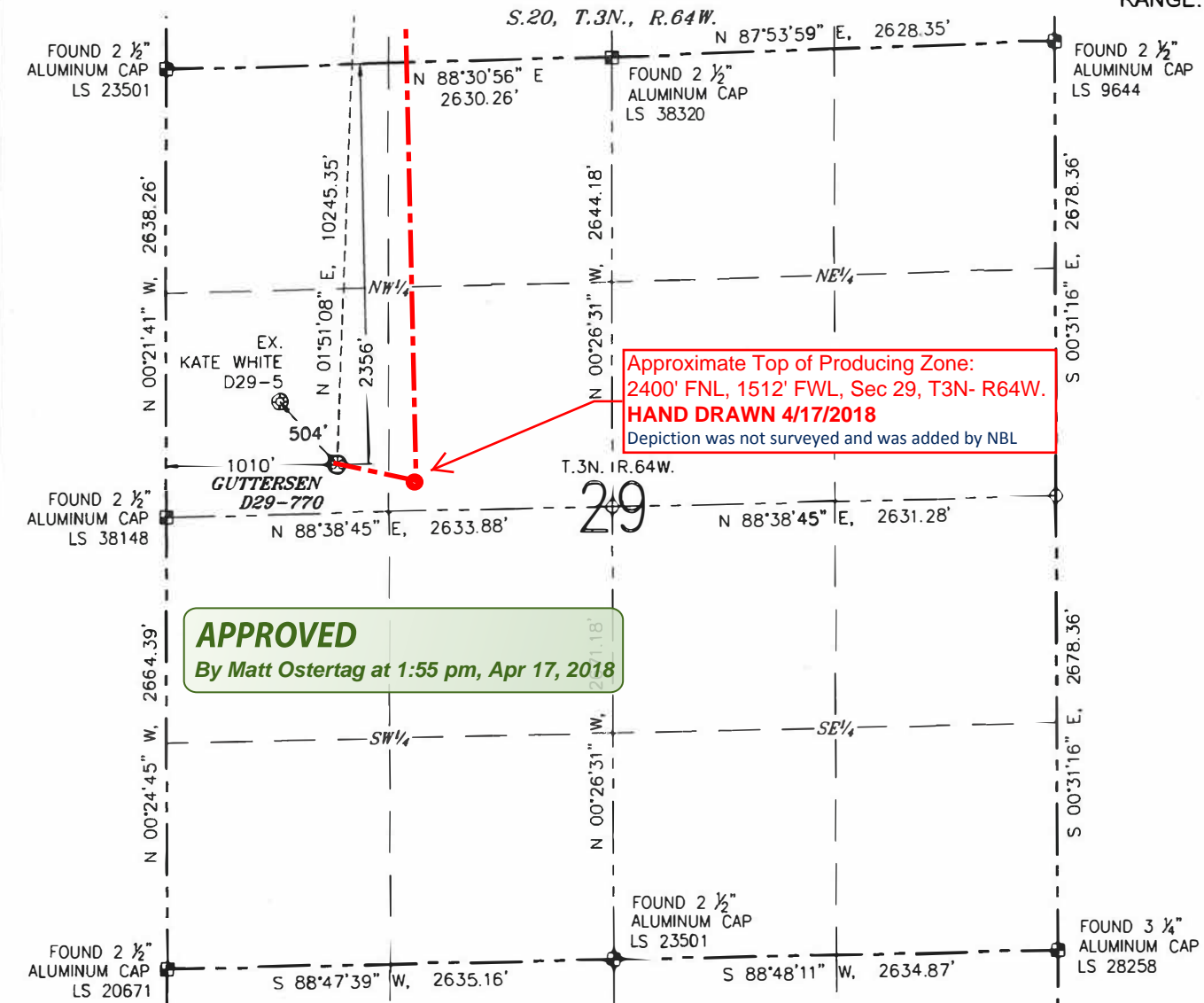


WELL LOCATION CERTIFICATE

GUTTERSEN D29-770

(SHEET 1 OF 3)

SECTION: 29
TOWNSHIP: 3N
RANGE: 64W

NOTES:

1. BEARINGS ARE GRID BEARINGS OF THE COLORADO STATE PLANE COORDINATE SYSTEM, NORTH ZONE, NAD 83. THE LINEAL DIMENSIONS SHOWN HEREON ARE BASED UPON THE "U.S. SURVEY FOOT".
2. GROUND ELEVATIONS ARE BASED UPON NGS OPUS SOLUTION NAVD 88 DATUM COMPUTED USING GEOID09.
3. IMPROVEMENTS: SEE LOCATION DRAWING FOR ALL VISIBLE IMPROVEMENTS WITHIN 500' OF THE DISTURBED AREA.
4. SURFACE USE: RANGELAND.
5. INSTRUMENT OPERATOR: JASON DOW-PETERSON.
6. THE NEAREST EXISTING WELL: KATE WHITE D29-5, 504' NW.

IN ACCORDANCE WITH A REQUEST FROM MATT CAMPBELL WITH NOBLE ENERGY INC., R&R ENGINEERS-SURVEYORS, INC. HAS DETERMINED THE SURFACE HOLE LOCATION OF THE GUTTERSEN D29-770 WELL TO BE 2356' FROM THE NORTH LINE AND 1010' FROM THE WEST LINE AS MEASURED AT RIGHT ANGLES FROM THE SECTION LINES OF SECTION 29, TOWNSHIP 3 NORTH, RANGE 64 WEST, AND THE BOTTOM HOLE LOCATION TO BE 2565' FROM THE SOUTH LINE AND 1401' FROM THE WEST LINE AS MEASURED AT RIGHT ANGLES FROM THE SECTION LINES OF SECTION 17, TOWNSHIP 3 NORTH, RANGE 64 WEST OF THE 6TH PRINCIPAL MERIDIAN, WELD COUNTY, COLORADO.

I HEREBY CERTIFY THAT THIS WELL LOCATION CERTIFICATE WAS PREPARED BY ME, OR UNDER MY DIRECT SUPERVISION, THAT THE FIELD WORK WAS COMPLETED ON 02/21/2018, FOR AND ON BEHALF OF NOBLE ENERGY INC., THAT IT IS NOT A LAND SURVEY PLAT OR AN IMPROVEMENT SURVEY PLAT, AND THAT IT IS NOT TO BE RELIED UPON FOR ESTABLISHMENT OF FENCES, BUILDINGS, OR OTHER FUTURE IMPROVEMENT LINES.

SURFACE HOLE LOCATION

LATITUDE: N 40.19702°
LONGITUDE: W 104.58096°
PDOP: 1.2
ELEVATION: 4785'
¼-¼: SW¼NW¼

BOTTOM HOLE LOCATION

LATITUDE: N 40.22512°
LONGITUDE: W 104.57940°

LEGEND

- ⊗ PROPOSED WELL
- ⊙ EXISTING WELL
- BOTTOM HOLE
- ⊠ FOUND MONUMENT
- CALCULATED POSITION



0 1000'
SCALE: 1" = 1000'

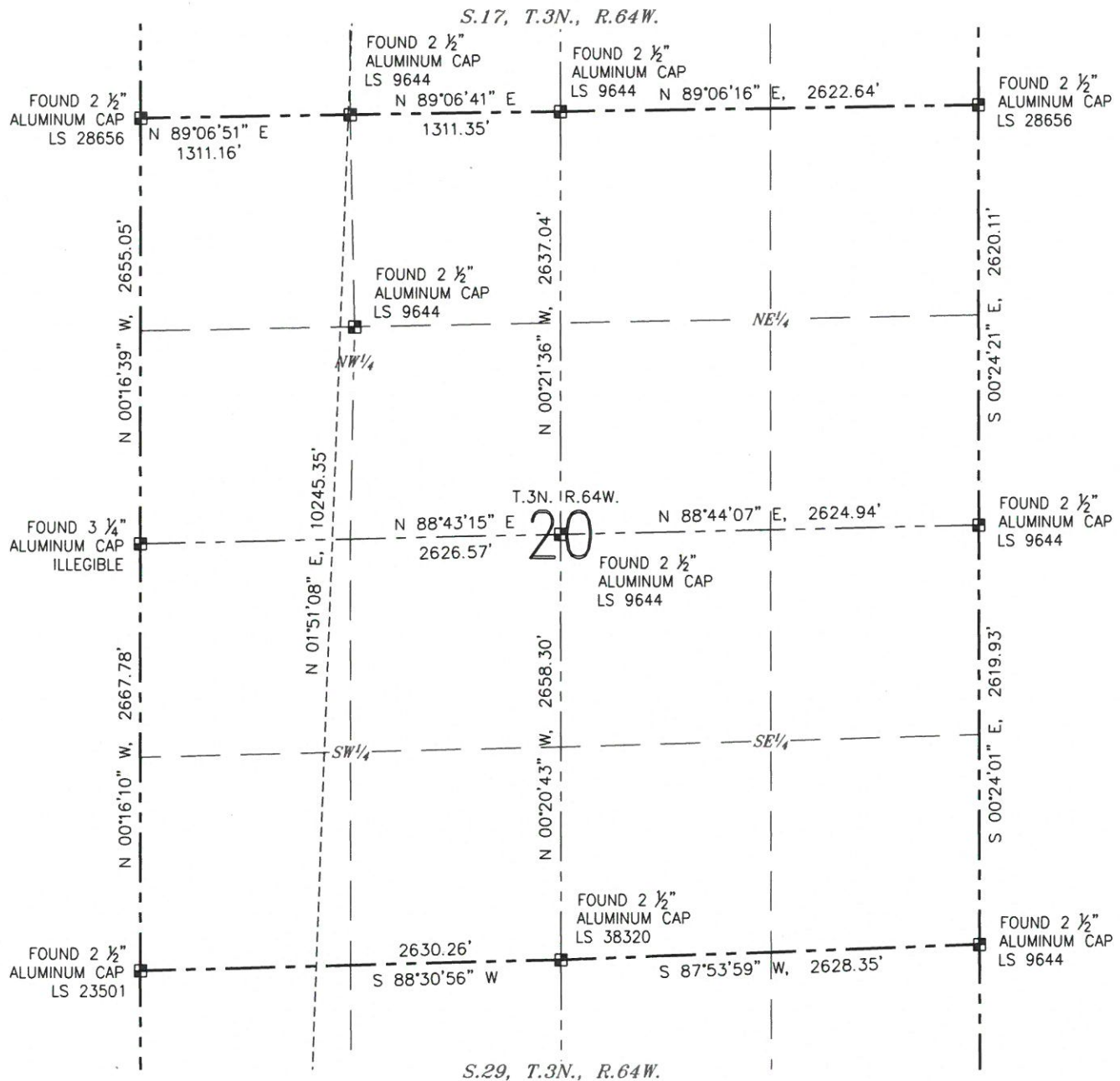


STACY LYNN BALZER, PLS 38495
FOR AND ON BEHALF OF R&R ENGINEERS-SURVEYORS, INC. DATE: 03/15/2018
JOB #: NE17302

WELL LOCATION CERTIFICATE

GUTTERSEN D29-770

(SHEET 2 OF 3)

SECTION: 29
TOWNSHIP: 3N
RANGE: 64W

LEGEND

- ⊗ PROPOSED WELL
- ⊙ EXISTING WELL
- ⊕ BOTTOM HOLE
- ⊠ FOUND MONUMENT
- CALCULATED POSITION



0 1000'

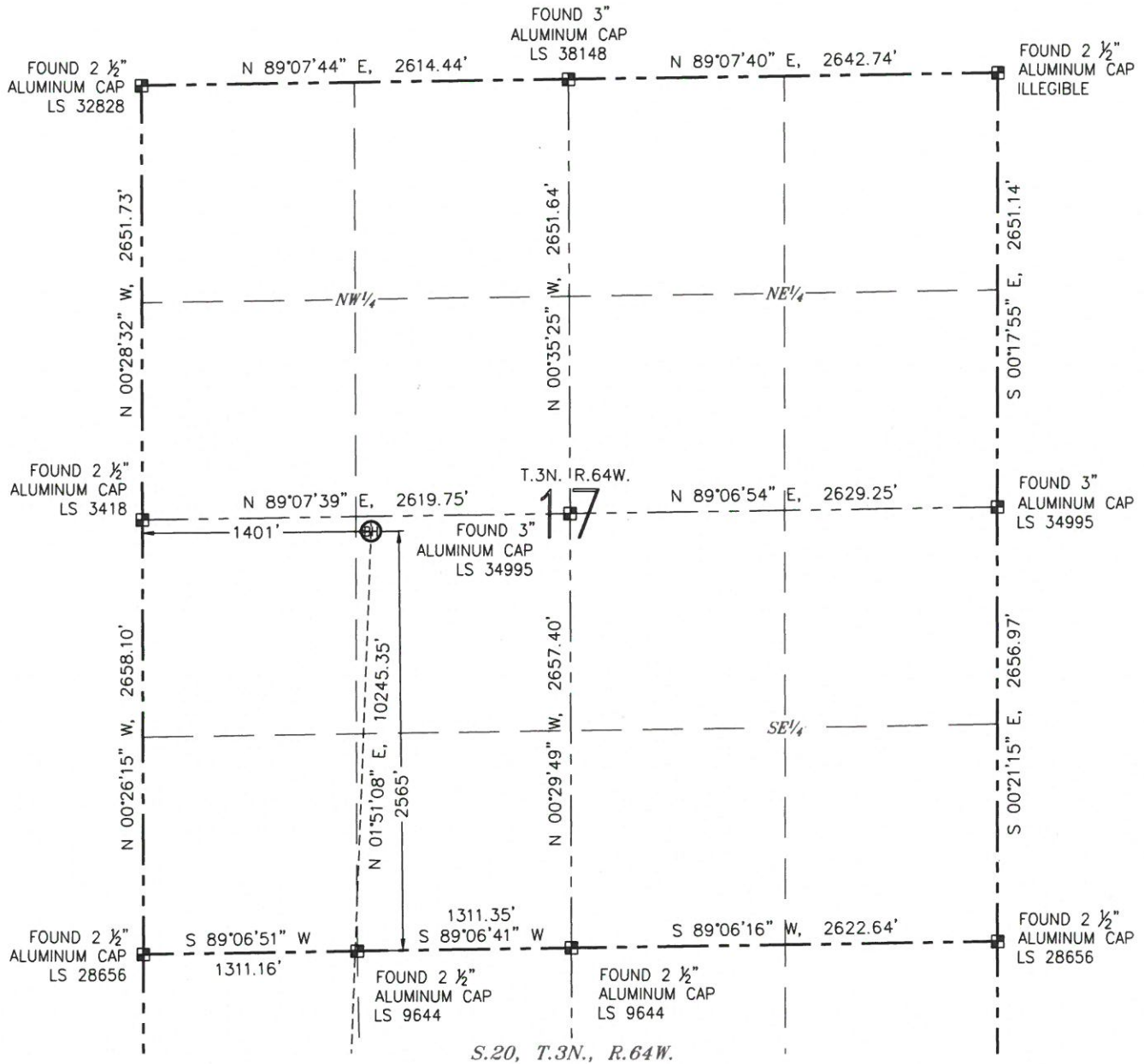
SCALE: 1" = 1000'

DATE: 03/15/2018
JOB #: NE17302

WELL LOCATION CERTIFICATE

GUTTERSEN D29-770

(SHEET 3 OF 3)

SECTION: 29
TOWNSHIP: 3N
RANGE: 64W

LEGEND

- ⊗ PROPOSED WELL
- ⊙ EXISTING WELL
- ⊙ BOTTOM HOLE
- ⊠ FOUND MONUMENT
- CALCULATED POSITION



0 1000'

SCALE: 1" = 1000'

DATE: 03/15/2018
JOB #: NE17302