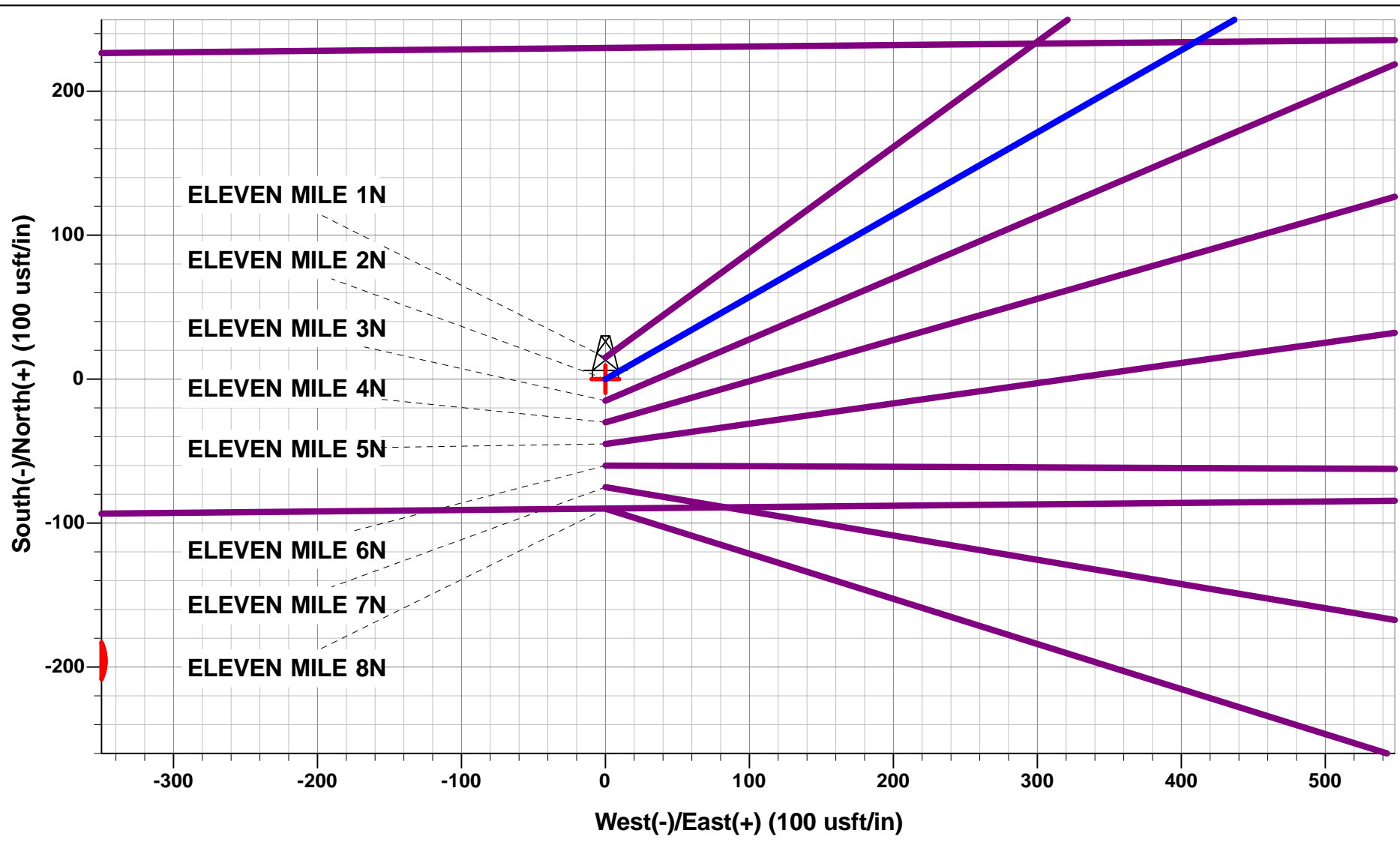




Project: WELD COUNTY, COLORADO (TRUE)  
Site: SW NW SEC. 10 T3N R66W 6th P.M. (ELEVEN MILE)  
Well: ELEVEN MILE 2N  
Wellbore: ORIGINAL WELLBORE  
Design: PROPOSAL #1

| ANNOTATIONS |          |       |        |         |          |          |          |  |  |
|-------------|----------|-------|--------|---------|----------|----------|----------|--|--|
| TVD         | MD       | Inc   | Azi    | +N/-S   | +E/-W    | VSect    | Dep      | Annotation                             |  |
| 0.00        | 0.00     | 0.00  | 0.00   | 0.00    | 0.00     | 0.00     | 0.00     | SHL: 1701ft FNL & 1105ft FWL of Sec 10 |  |
| 400.00      | 400.00   | 0.00  | 0.00   | 0.00    | 0.00     | 0.00     | 0.00     | START NUDGE (2°/100ft BUR)             |  |
| 1727.01     | 1779.73  | 27.59 | 60.26  | 161.67  | 282.95   | -249.99  | 325.88   | EOB TO 27.59° INC                      |  |
| 5110.80     | 5597.85  | 27.59 | 60.26  | 1039.11 | 1818.54  | -1606.75 | 2094.48  | END OF TANGENT                         |  |
| 6437.81     | 6977.58  | 0.00  | 0.00   | 1200.78 | 2101.49  | -1856.75 | 2420.36  | EOD TO VERTICAL                        |  |
| 6537.81     | 7077.58  | 0.00  | 0.00   | 1200.78 | 2101.49  | -1856.75 | 2420.36  | KOP (8°/100ft BUR)                     |  |
| 7254.00     | 8204.46  | 90.15 | 269.43 | 1193.64 | 1383.45  | -1151.22 | 3138.43  | EP: 500ft FNL & 2490ft FWL of Sec 10   |  |
| 7236.56     | 14836.65 | 90.15 | 269.43 | 1127.74 | -5248.39 | 5365.02  | 9770.60  | END OF TANGENT                         |  |
| 7236.05     | 15031.00 | 90.15 | 263.60 | 1115.93 | -5442.30 | 5553.81  | 9964.95  | EOT TO 263.6° AZ                       |  |
| 7235.97     | 15061.00 | 90.15 | 263.60 | 1112.59 | -5472.11 | 5582.56  | 9994.95  | END OF TANGENT                         |  |
| 7235.46     | 15255.33 | 90.15 | 269.43 | 1100.78 | -5666.00 | 5771.33  | 10189.29 | EOT TO 269.43° AZ                      |  |
| 7234.95     | 15452.33 | 90.15 | 275.34 | 1108.97 | -5862.74 | 5966.43  | 10386.28 | EOT TO 275.34° AZ                      |  |
| 7234.87     | 15482.33 | 90.15 | 275.34 | 1111.77 | -5892.61 | 5996.32  | 10416.28 | END OF TANGENT                         |  |
| 7234.37     | 15679.46 | 90.14 | 269.43 | 1119.96 | -6089.48 | 6191.55  | 10613.41 | EOT TO 269.43° AZ                      |  |
| 7234.00     | 15831.55 | 90.14 | 269.43 | 1118.44 | -6241.56 | 6340.98  | 10765.50 | BHL: 500ft FNL & 150ft FWL of Sec 9    |  |

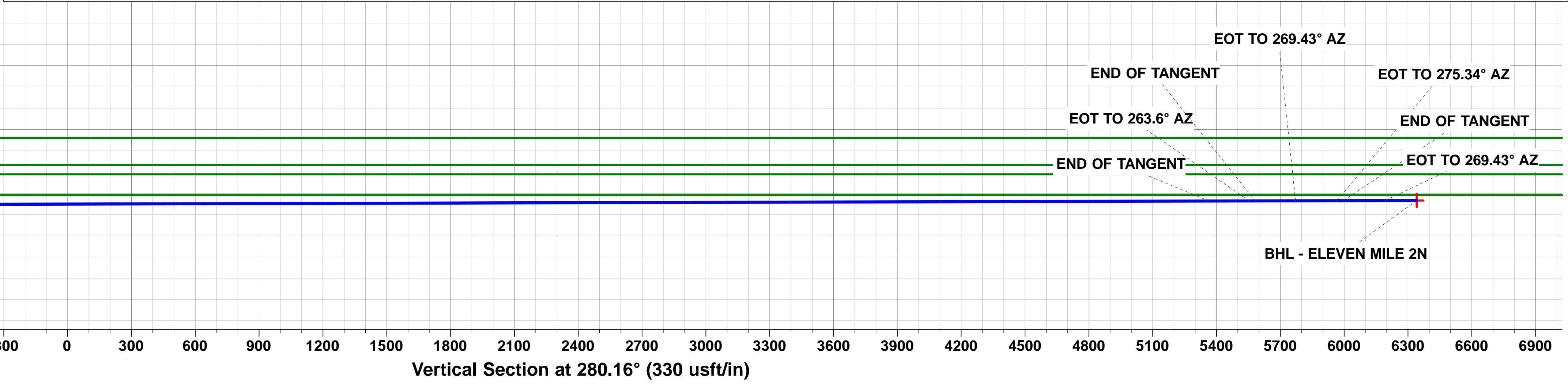
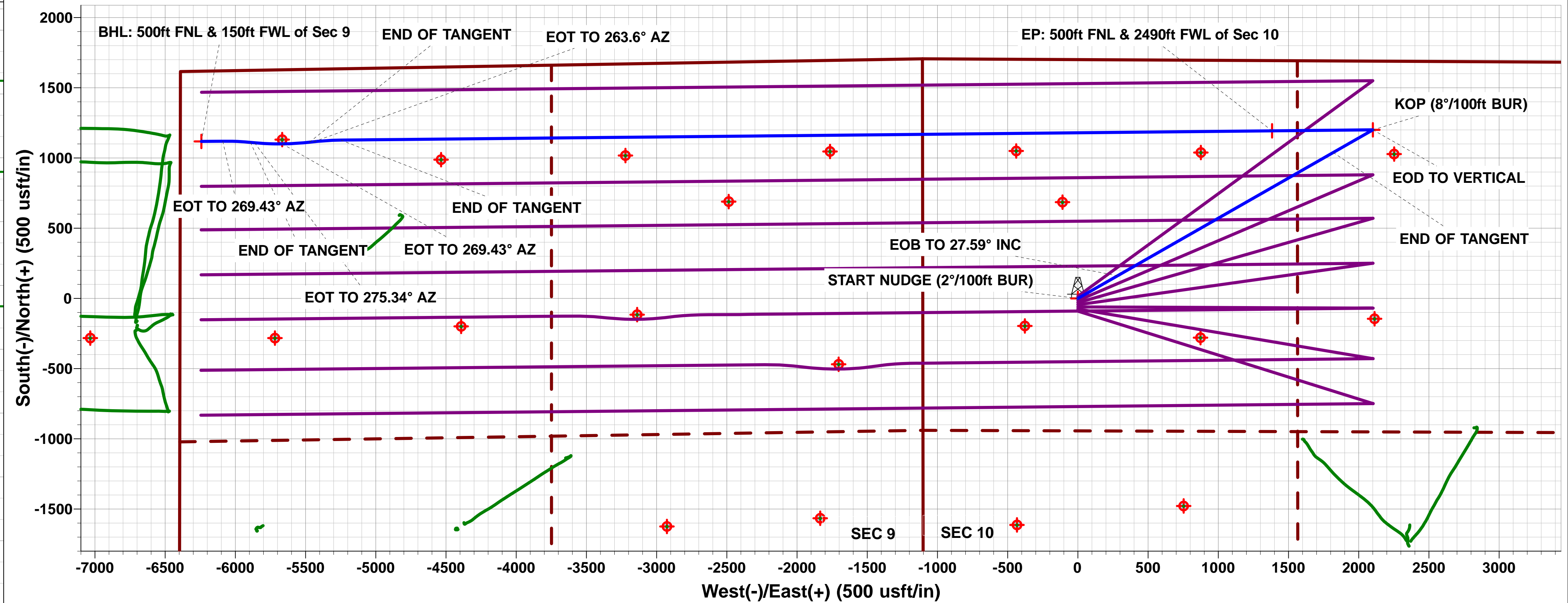
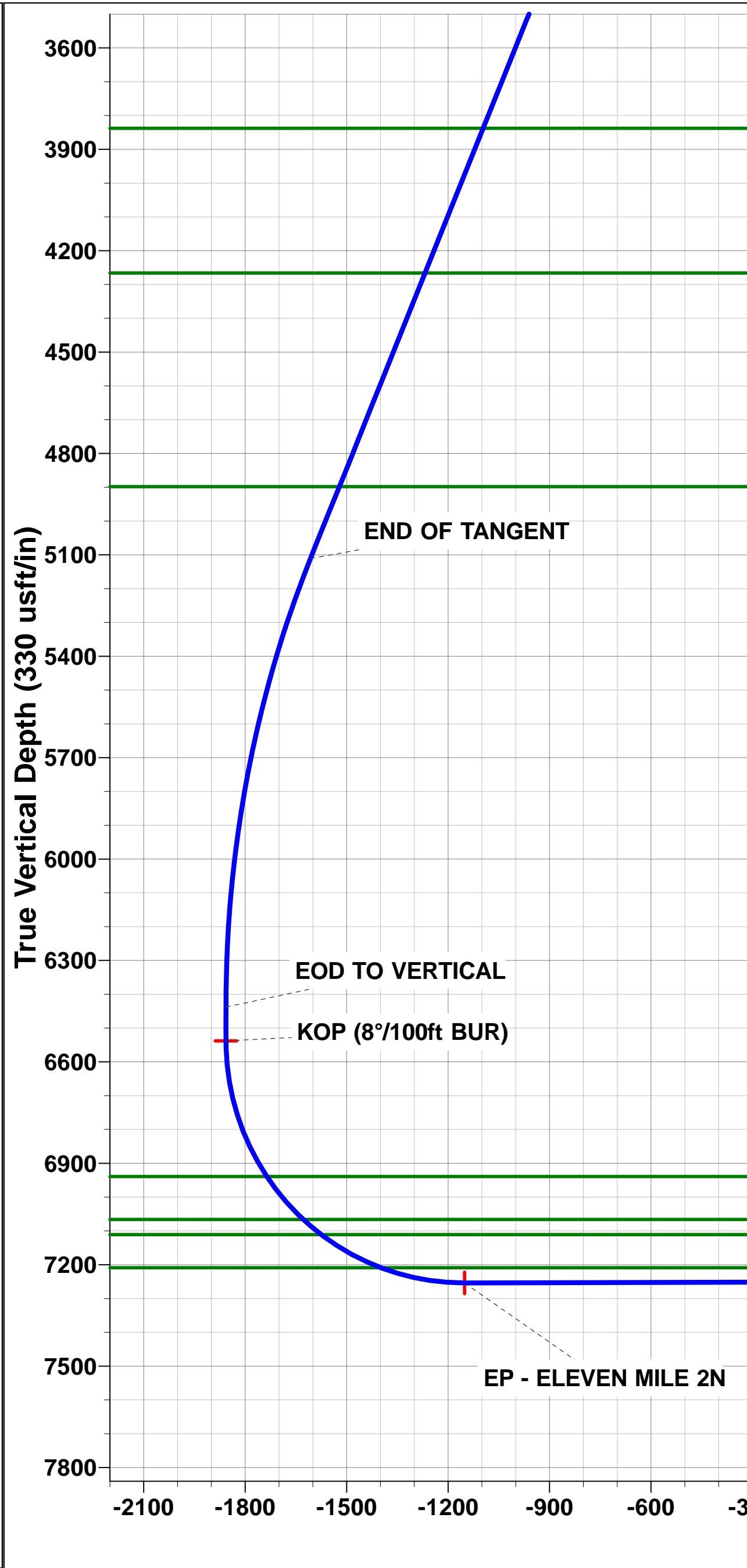
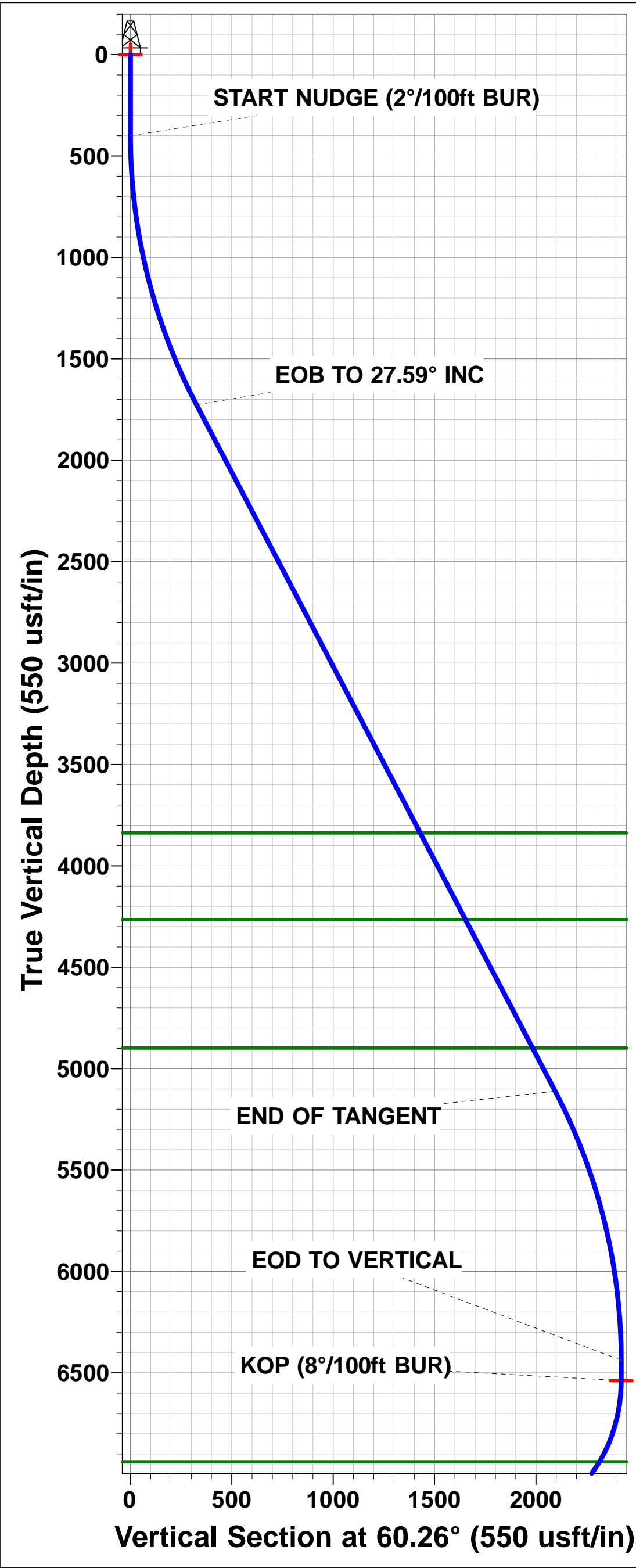
| WELLBORE TARGET DETAILS (LAT/LONG) |         |         |          |           |             |
|------------------------------------|---------|---------|----------|-----------|-------------|
| Name                               | TVD     | +N/-S   | +E/-W    | Latitude  | Longitude   |
| KOP - ELEVEN MILE 2N               | 6537.81 | 1200.78 | 2101.49  | 40.245393 | -104.761481 |
| EP - ELEVEN MILE 2N                | 7254.00 | 1193.64 | 1383.45  | 40.245373 | -104.764053 |
| BHL - ELEVEN MILE 2N               | 7234.00 | 1118.44 | -6241.56 | 40.245165 | -104.791368 |
| SHL - ELEVEN MILE 2N               | 0.00    | 0.00    | 0.00     | 40.242097 | -104.769009 |



PROPOSED LOCAL COORDINATES:  
SHL: 1701ft FNL & 1105ft FWL of Sec 10  
EP: 500ft FNL & 2490ft FWL of Sec 10  
BHL: 500ft FNL & 150ft FWL of Sec 9

Azimuths to True North  
Magnetic North: 8.11°

Magnetic Field  
Strength: 52217.3snT  
Dip Angle: 66.71°  
Date: 08/04/2018  
Model: IGRF2015



# **PDC ENERGY**

**WELD COUNTY, COLORADO (TRUE)**

**SW NW SEC. 10 T3N R66W 6th P.M. (ELEVEN MILE)**

**ELEVEN MILE 2N**

**ORIGINAL WELLBORE**

**PROPOSAL #1**

## **Anticollision Report**

**09 April, 2018**



## Anticollision Report



|                           |   |                                     |   |
|---------------------------|---|-------------------------------------|---|
| <b>Company:</b>           | PDC ENERGY                                    | <b>Local Co-ordinate Reference:</b> | Well ELEVEN MILE 2N                       |
| <b>Project:</b>           | WELD COUNTY, COLORADO (TRUE)                  | <b>TVD Reference:</b>               | KB-EST @ 4884.00usft (Original Well Elev) |
| <b>Reference Site:</b>    | SW NW SEC. 10 T3N R66W 6th P.M. (ELEVEN MILE) | <b>MD Reference:</b>                | KB-EST @ 4884.00usft (Original Well Elev) |
| <b>Site Error:</b>        | 0.00 usft                                     | <b>North Reference:</b>             | True                                      |
| <b>Reference Well:</b>    | ELEVEN MILE 2N                                | <b>Survey Calculation Method:</b>   | Minimum Curvature                         |
| <b>Well Error:</b>        | 0.00 usft                                     | <b>Output errors are at</b>         | 2.00 sigma                                |
| <b>Reference Wellbore</b> | ORIGINAL WELLBORE                             | <b>Database:</b>                    | EDM 5000.1 Single User Db                 |
| <b>Reference Design:</b>  | PROPOSAL #1                                   | <b>Offset TVD Reference:</b>        | Offset Datum                              |

|                                     |   |                       |                     |
|-------------------------------------|---|-----------------------|---------------------|
| <b>Reference</b>                    | PROPOSAL #1   |                       |                     |
| <b>Filter type:</b>                 | NO GLOBAL FILTER: Using user defined selection & filtering criteria |                       |                     |
| <b>Interpolation Method:</b>        | MD + Stations Interval 100.00usft                                   | <b>Error Model:</b>   | ISCWSA              |
| <b>Depth Range:</b>                 | Unlimited   | <b>Scan Method:</b>   | Closest Approach 3D |
| <b>Results Limited by:</b>          | Maximum center-center distance of 10,000.00 usft                    | <b>Error Surface:</b> | Elliptical Conic    |
| <b>Warning Levels Evaluated at:</b> | 2.00 Sigma  | <b>Casing Method:</b> | Not applied         |

|                            |                  |                                 |                  |                    |
|----------------------------|------------------|---------------------------------|------------------|--------------------|
| <b>Survey Tool Program</b> | <b>Date</b>      | 09/04/2018                      |                  |                    |
| <b>From (usft)</b>         | <b>To (usft)</b> | <b>Survey (Wellbore)</b>        | <b>Tool Name</b> | <b>Description</b> |
| 0.00                       | 15,831.12        | PROPOSAL #1 (ORIGINAL WELLBORE) | MWD              | MWD - Standard     |

| Summary  |                                 |                              |                                 |                                  |                   |                     |
|--|---------------------------------|------------------------------|---------------------------------|----------------------------------|-------------------|---------------------|
| Site Name  | Reference Measured Depth (usft) | Offset Measured Depth (usft) | Distance Between Centres (usft) | Distance Between Ellipses (usft) | Separation Factor | Warning             |
| Offset Well - Wellbore - Design                    |                                 |                              |                                 |                                  |                   |                     |
| SW NW SEC. 10 T3N R66W 6th P.M. (ELEVEN MILE)      |                                 |                              |                                 |                                  |                   |                     |
| ABDN VERT HSR-CRONHOLM #10-10A - Wellbore #1 -     | 4,311.18                        | 4,139.97                     | 2,675.36                        | 2,641.95                         | 80.067            | CC                  |
| ABDN VERT HSR-CRONHOLM #10-10A - Wellbore #1 -     | 4,400.00                        | 4,218.80                     | 2,675.68                        | 2,641.42                         | 78.098            | ES                  |
| ABDN VERT HSR-CRONHOLM #10-10A - Wellbore #1 -     | 15,800.00                       | 7,244.61                     | 8,998.90                        | 8,772.35                         | 39.721            | SF                  |
| ABDN VERT UPRC #9-3K - Wellbore #1 - Design #1     | 14,124.63                       | 7,174.43                     | 146.46                          | -175.42                          | 0.455             | Level 1, CC, ES, SF |
| ELEVEN MILE 1N - ORIGINAL WELLBORE - PROPOSA       | 300.00                          | 300.00                       | 15.05                           | 13.98                            | 14.041            | CC                  |
| ELEVEN MILE 1N - ORIGINAL WELLBORE - PROPOSA       | 15,831.55                       | 15,825.06                    | 361.37                          | -75.71                           | 0.827             | Level 1, ES, SF     |
| ELEVEN MILE 3N - ORIGINAL WELLBORE - PROPOSA       | 400.00                          | 400.00                       | 14.97                           | 13.45                            | 9.840             | CC                  |
| ELEVEN MILE 3N - ORIGINAL WELLBORE - PROPOSA       | 15,831.55                       | 15,695.90                    | 332.39                          | -100.86                          | 0.767             | Level 1, ES, SF     |
| ELEVEN MILE 4N - ORIGINAL WELLBORE - PROPOSA       | 400.00                          | 400.00                       | 29.98                           | 28.46                            | 19.703            | CC, ES              |
| ELEVEN MILE 4N - ORIGINAL WELLBORE - PROPOSA       | 15,831.55                       | 15,731.82                    | 630.02                          | 179.84                           | 1.399             | Level 3, SF         |
| ELEVEN MILE 5N - ORIGINAL WELLBORE - PROPOSA       | 400.00                          | 399.00                       | 44.99                           | 43.47                            | 29.611            | CC, ES              |
| ELEVEN MILE 5N - ORIGINAL WELLBORE - PROPOSA       | 15,831.55                       | 15,628.48                    | 954.18                          | 505.58                           | 2.127             | SF                  |
| ELEVEN MILE 6N - ORIGINAL WELLBORE - PROPOSA       | 400.00                          | 399.00                       | 60.00                           | 58.48                            | 39.489            | CC, ES              |
| ELEVEN MILE 6N - ORIGINAL WELLBORE - PROPOSA       | 15,831.55                       | 15,683.12                    | 1,269.91                        | 820.72                           | 2.827             | SF                  |
| ELEVEN MILE 7N - ORIGINAL WELLBORE - PROPOSA       | 400.00                          | 399.00                       | 74.97                           | 73.45                            | 49.343            | CC, ES              |
| ELEVEN MILE 7N - ORIGINAL WELLBORE - PROPOSA       | 15,831.55                       | 15,601.24                    | 1,632.33                        | 1,182.89                         | 3.632             | SF                  |
| ELEVEN MILE 8N - ORIGINAL WELLBORE - PROPOSA       | 300.00                          | 299.00                       | 89.98                           | 88.91                            | 84.105            | CC, ES              |
| ELEVEN MILE 8N - ORIGINAL WELLBORE - PROPOSA       | 15,831.55                       | 15,689.00                    | 1,949.82                        | 1,499.59                         | 4.331             | SF                  |
| EXIST DD BANKSTROM #18-9 - Wellbore #1 - Wellbore  | 14,678.45                       | 7,225.57                     | 783.64                          | 587.50                           | 3.995             | CC                  |
| EXIST DD BANKSTROM #18-9 - Wellbore #1 - Wellbore  | 14,700.00                       | 7,225.73                     | 783.93                          | 587.21                           | 3.985             | ES                  |
| EXIST DD BANKSTROM #18-9 - Wellbore #1 - Wellbore  | 14,800.00                       | 7,226.44                     | 793.01                          | 593.55                           | 3.976             | SF                  |
| EXIST DD BIRMINGHAM L #9-21D - Wellbore #1 - Wellb | 13,248.66                       | 7,268.44                     | 2,277.63                        | 2,120.77                         | 14.519            | CC                  |
| EXIST DD BIRMINGHAM L #9-21D - Wellbore #1 - Wellb | 13,300.00                       | 7,271.04                     | 2,278.21                        | 2,119.95                         | 14.396            | ES                  |
| EXIST DD BIRMINGHAM L #9-21D - Wellbore #1 - Wellb | 14,200.00                       | 7,354.29                     | 2,467.62                        | 2,284.87                         | 13.503            | SF                  |
| EXIST DD MORNING #24-10 - Wellbore #1 - Wellbore # | 7,098.75                        | 6,694.46                     | 2,243.51                        | 2,191.32                         | 42.990            | CC, ES              |
| EXIST DD MORNING #24-10 - Wellbore #1 - Wellbore # | 15,800.00                       | 7,440.00                     | 9,265.11                        | 9,038.25                         | 40.842            | SF                  |
| EXIST DD MORNING #25-10 - Wellbore #1 - Wellbore # | 4,753.55                        | 4,876.95                     | 2,075.26                        | 2,039.31                         | 57.722            | CC                  |
| EXIST DD MORNING #25-10 - Wellbore #1 - Wellbore # | 4,800.00                        | 4,893.00                     | 2,075.60                        | 2,039.27                         | 57.135            | ES                  |
| EXIST DD MORNING #25-10 - Wellbore #1 - Wellbore # | 15,800.00                       | 7,399.00                     | 8,097.91                        | 7,871.11                         | 35.705            | SF                  |
| EXIST HZ EISENACH #32N-8HZ - Wellbore #1 - Wellbo  | 15,831.55                       | 7,023.00                     | 1,970.12                        | 1,732.76                         | 8.300             | CC, ES, SF          |
| EXIST HZ EISENACH FEDERAL #30C-8HZ - Wellbore #    | 15,831.55                       | 7,193.08                     | 363.39                          | 185.88                           | 2.047             | CC, ES, SF          |
| EXIST HZ EISENACH FEDERAL #30N-8HZ - Wellbore #    | 15,831.55                       | 7,128.00                     | 443.09                          | 348.82                           | 4.700             | CC, ES, SF          |
| EXIST HZ EISENACH FEDERAL #5N-8HZ - Wellbore #1    | 15,831.55                       | 6,928.00                     | 1,319.93                        | 1,088.49                         | 5.703             | CC, ES, SF          |
| EXIST VERT ANDERSON #8-9 - Wellbore #1 - Design #  | 11,307.54                       | 7,203.84                     | 1,631.72                        | 1,384.38                         | 6.597             | CC, ES              |
| EXIST VERT ANDERSON #8-9 - Wellbore #1 - Design #  | 11,600.00                       | 7,203.07                     | 1,657.73                        | 1,402.90                         | 6.505             | SF                  |
| EXIST VERT ANDERSON UPRR #32-9A - Wellbore #1 -    | 12,738.88                       | 7,189.07                     | 1,263.97                        | 979.33                           | 4.441             | CC                  |

CC - Min centre to center distance or convergent point, SF - min separation factor, ES - min ellipse separation



|                           |   |                                     |   |
|---------------------------|---|-------------------------------------|---|
| <b>Company:</b>           | PDC ENERGY                                    | <b>Local Co-ordinate Reference:</b> | Well ELEVEN MILE 2N                       |
| <b>Project:</b>           | WELD COUNTY, COLORADO (TRUE)                  | <b>TVD Reference:</b>               | KB-EST @ 4884.00usft (Original Well Elev) |
| <b>Reference Site:</b>    | SW NW SEC. 10 T3N R66W 6th P.M. (ELEVEN MILE) | <b>MD Reference:</b>                | KB-EST @ 4884.00usft (Original Well Elev) |
| <b>Site Error:</b>        | 0.00 usft                                     | <b>North Reference:</b>             | True                                      |
| <b>Reference Well:</b>    | ELEVEN MILE 2N                                | <b>Survey Calculation Method:</b>   | Minimum Curvature                         |
| <b>Well Error:</b>        | 0.00 usft                                     | <b>Output errors are at</b>         | 2.00 sigma                                |
| <b>Reference Wellbore</b> | ORIGINAL WELLBORE                             | <b>Database:</b>                    | EDM 5000.1 Single User Db                 |
| <b>Reference Design:</b>  | PROPOSAL #1                                   | <b>Offset TVD Reference:</b>        | Offset Datum                              |

## Summary

| Site Name   | Reference Measured Depth (usft) | Offset Measured Depth (usft) | Distance Between Centres (usft) | Distance Between Ellipses (usft) | Separation Factor | Warning             |
|---|---------------------------------|------------------------------|---------------------------------|----------------------------------|-------------------|---------------------|
| SW NW SEC. 10 T3N R66W 6th P.M. (ELEVEN MILE)         |                                 |                              |                                 |                                  |                   |                     |
| EXIST VERT ANDERSON UPRR #32-9A - Wellbore #1 -       | 12,800.00                       | 7,188.91                     | 1,265.45                        | 979.17                           | 4.420             | ES                  |
| EXIST VERT ANDERSON UPRR #32-9A - Wellbore #1 -       | 12,900.00                       | 7,188.65                     | 1,274.20                        | 985.25                           | 4.410             | SF                  |
| EXIST VERT ANDERSON UPRR #41-9 - Wellbore #1 - D      | 11,353.78                       | 7,204.72                     | 115.69                          | -132.84                          | 0.466             | Level 1, CC, ES, SF |
| EXIST VERT DILL UPRR #31-9 (2) - Wellbore #1 - Design | 12,811.23                       | 7,181.88                     | 130.21                          | -156.30                          | 0.454             | Level 1, CC, ES, SF |
| EXIST VERT EDITH WEBBER UNIT #2 - Wellbore #1 - D     | 9,702.03                        | 7,246.06                     | 492.84                          | 283.12                           | 2.350             | CC, ES, SF          |
| EXIST VERT EISENACH & PRESTON #8-8K - Wellbore        | 15,831.55                       | 7,187.00                     | 1,608.53                        | 1,240.24                         | 4.368             | CC, ES, SF          |
| EXIST VERT HSR BOYD #11-10 - Wellbore #1 - Design     | 400.00                          | 397.00                       | 1,659.00                        | 1,651.38                         | 217.690           | CC                  |
| EXIST VERT HSR BOYD #11-10 - Wellbore #1 - Design     | 1,100.00                        | 1,090.06                     | 1,665.22                        | 1,641.59                         | 70.472            | ES                  |
| EXIST VERT HSR BOYD #11-10 - Wellbore #1 - Design     | 9,600.00                        | 7,247.33                     | 2,765.83                        | 2,558.21                         | 13.321            | SF                  |
| EXIST VERT HSR-COOPER #12-10A - Wellbore #1 - De      | 400.00                          | 375.00                       | 1,669.91                        | 1,662.54                         | 226.321           | CC                  |
| EXIST VERT HSR-COOPER #12-10A - Wellbore #1 - De      | 500.00                          | 474.98                       | 1,671.14                        | 1,661.52                         | 173.608           | ES                  |
| EXIST VERT HSR-COOPER #12-10A - Wellbore #1 - De      | 10,900.00                       | 7,221.91                     | 2,915.30                        | 2,678.03                         | 12.287            | SF                  |
| EXIST VERT HSR-MAYNE #2-10 - Wellbore #1 - Design     | 7,077.58                        | 6,530.81                     | 229.13                          | 76.12                            | 1.498             | Level 3, CC         |
| EXIST VERT HSR-MAYNE #2-10 - Wellbore #1 - Design     | 7,100.00                        | 6,553.23                     | 229.36                          | 49.41                            | 1.275             | Level 3, ES, SF     |
| EXIST VERT HSR-MILLER #7-10 - Wellbore #1 - Design    | 4,882.13                        | 4,496.50                     | 1,173.85                        | 1,048.36                         | 9.354             | CC                  |
| EXIST VERT HSR-MILLER #7-10 - Wellbore #1 - Design    | 5,000.00                        | 4,600.96                     | 1,175.12                        | 1,046.40                         | 9.130             | ES                  |
| EXIST VERT HSR-MILLER #7-10 - Wellbore #1 - Design    | 7,600.00                        | 7,035.12                     | 1,357.45                        | 1,173.36                         | 7.374             | SF                  |
| EXIST VERT MORNING FRESH #11-10 - Wellbore #1 -       | 1,080.01                        | 1,076.64                     | 2,175.70                        | 2,152.47                         | 93.688            | CC                  |
| EXIST VERT MORNING FRESH #11-10 - Wellbore #1 -       | 1,500.00                        | 1,476.17                     | 2,179.47                        | 2,145.82                         | 64.767            | ES                  |
| EXIST VERT MORNING FRESH #11-10 - Wellbore #1 -       | 9,400.00                        | 7,253.86                     | 3,179.72                        | 2,975.97                         | 15.606            | SF                  |
| EXIST VERT PRESLEY #10-3K - Wellbore #1 - Design #    | 8,713.13                        | 7,269.66                     | 149.27                          | -42.72                           | 0.777             | Level 1, CC, ES, SF |
| EXIST VERT PRESLEY #10-4K - Wellbore #1 - Design #    | 10,027.77                       | 7,237.20                     | 125.28                          | -91.42                           | 0.578             | Level 1, CC, ES, SF |
| EXIST VERT PRESLEY #10-5K - Wellbore #1 - Design #    | 400.00                          | 373.00                       | 424.90                          | 417.54                           | 57.756            | CC                  |
| EXIST VERT PRESLEY #10-5K - Wellbore #1 - Design #    | 500.00                          | 472.98                       | 426.64                          | 417.04                           | 44.433            | ES                  |
| EXIST VERT PRESLEY #10-5K - Wellbore #1 - Design #    | 10,200.00                       | 7,221.75                     | 1,389.46                        | 1,169.01                         | 6.303             | SF                  |
| EXIST VERT PRESLEY #10-6K - Wellbore #1 - Design #    | 2,414.30                        | 2,282.39                     | 676.00                          | 617.74                           | 11.602            | CC                  |
| EXIST VERT PRESLEY #10-6K - Wellbore #1 - Design #    | 2,500.00                        | 2,358.34                     | 677.17                          | 616.57                           | 11.175            | ES                  |
| EXIST VERT PRESLEY #10-6K - Wellbore #1 - Design #    | 8,900.00                        | 7,245.17                     | 1,477.87                        | 1,282.66                         | 7.570             | SF                  |
| EXIST VERT UPRC #9-10K - Wellbore #1 - Design #1      | 12,541.89                       | 7,206.59                     | 2,774.23                        | 2,494.66                         | 9.923             | CC                  |
| EXIST VERT UPRC #9-10K - Wellbore #1 - Design #1      | 12,600.00                       | 7,206.44                     | 2,774.84                        | 2,493.73                         | 9.871             | ES                  |
| EXIST VERT UPRC #9-10K - Wellbore #1 - Design #1      | 13,300.00                       | 7,204.60                     | 2,875.95                        | 2,576.11                         | 9.591             | SF                  |
| EXIST VERT UPRC #9-11K - Wellbore #1 - Wellbore #1    | 14,048.12                       | 7,167.76                     | 2,781.12                        | 2,603.43                         | 15.652            | CC                  |
| EXIST VERT UPRC #9-11K - Wellbore #1 - Wellbore #1    | 14,100.00                       | 7,167.68                     | 2,781.60                        | 2,602.50                         | 15.531            | ES                  |
| EXIST VERT UPRC #9-11K - Wellbore #1 - Wellbore #1    | 15,255.33                       | 7,166.00                     | 3,010.59                        | 2,800.02                         | 14.298            | SF                  |
| EXIST VERT UPRC #9-12K - Wellbore #1 - Wellbore #1    | 15,322.86                       | 7,241.11                     | 2,720.81                        | 2,508.31                         | 12.804            | CC, ES              |
| EXIST VERT UPRC #9-12K - Wellbore #1 - Wellbore #1    | 15,831.55                       | 7,234.36                     | 2,772.02                        | 2,545.82                         | 12.255            | SF                  |
| EXIST VERT UPRC #9-4K - Wellbore #1 - Design #1       | 15,255.10                       | 7,166.46                     | 30.26                           | -322.31                          | 0.086             | Level 1, CC, SF     |
| EXIST VERT UPRC #9-4K - Wellbore #1 - Design #1       | 15,255.33                       | 7,166.46                     | 30.26                           | -322.31                          | 0.086             | Level 1, ES         |
| EXIST VERT UPRC #9-5K - Wellbore #1 - Design #1       | 15,293.34                       | 7,185.36                     | 1,383.29                        | 1,029.49                         | 3.910             | CC                  |
| EXIST VERT UPRC #9-5K - Wellbore #1 - Design #1       | 15,300.00                       | 7,185.34                     | 1,383.31                        | 1,029.34                         | 3.908             | ES                  |
| EXIST VERT UPRC #9-5K - Wellbore #1 - Design #1       | 15,400.00                       | 7,185.08                     | 1,390.36                        | 1,034.08                         | 3.902             | SF                  |
| EXIST VERT UPRC #9-6K - Wellbore #1 - Design #1       | 13,993.15                       | 7,187.78                     | 1,335.11                        | 1,016.67                         | 4.193             | CC                  |
| EXIST VERT UPRC #9-6K - Wellbore #1 - Design #1       | 14,000.00                       | 7,187.76                     | 1,335.12                        | 1,016.50                         | 4.190             | ES                  |
| EXIST VERT UPRC #9-6K - Wellbore #1 - Design #1       | 14,100.00                       | 7,187.49                     | 1,339.38                        | 1,018.03                         | 4.168             | SF                  |
| EXIST VERT UPRC #9-9K - Wellbore #1 - Design #1       | 400.00                          | 359.00                       | 2,411.63                        | 2,404.42                         | 334.701           | CC                  |
| EXIST VERT UPRC #9-9K - Wellbore #1 - Design #1       | 500.00                          | 458.98                       | 2,413.34                        | 2,403.89                         | 255.274           | ES                  |
| EXIST VERT UPRC #9-9K - Wellbore #1 - Design #1       | 12,200.00                       | 7,202.49                     | 2,828.23                        | 2,557.75                         | 10.456            | SF                  |
| EXIST VERT UPRR 21 PAN AM UTL #1 - Wellbore #1 -      | 12,078.96                       | 7,193.81                     | 465.45                          | 198.24                           | 1.742             | CC                  |
| EXIST VERT UPRR 21 PAN AM UTL #1 - Wellbore #1 -      | 12,100.00                       | 7,193.75                     | 465.93                          | 198.17                           | 1.740             | ES, SF              |

CC - Min centre to center distance or convergent point, SF - min separation factor, ES - min ellipse separation