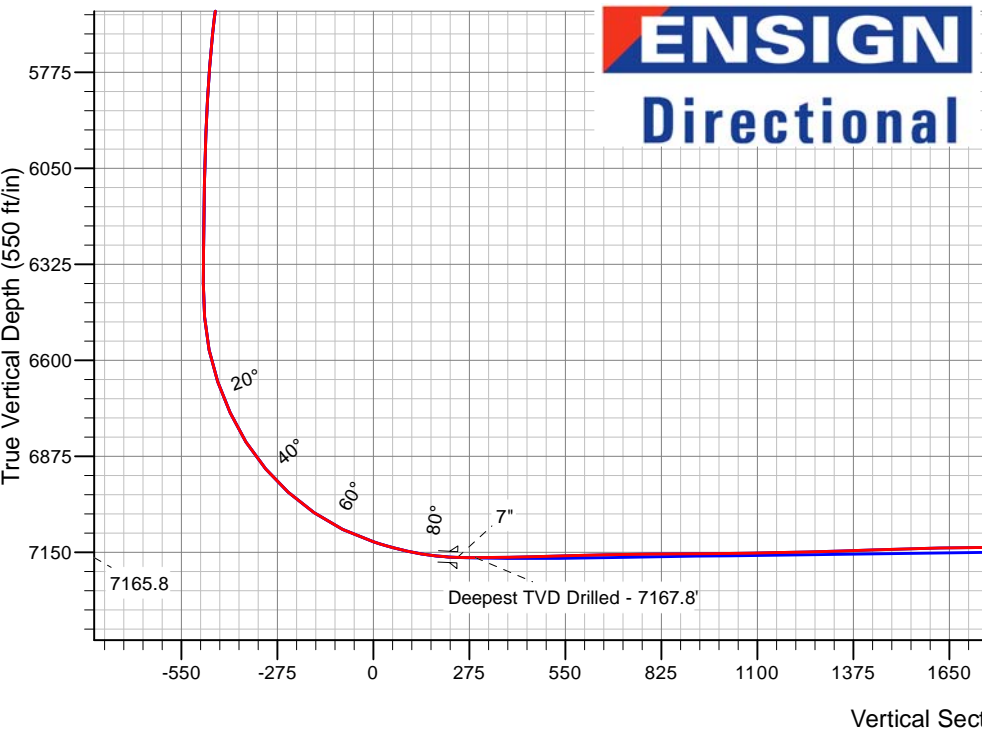
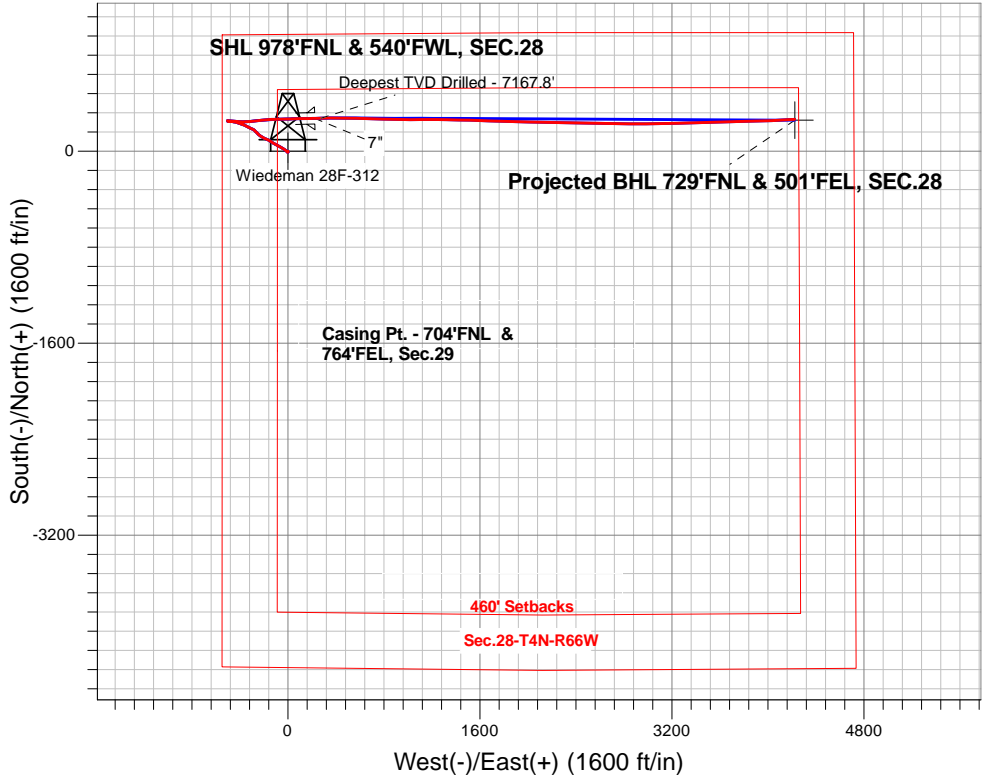


PETROLEUM DEVELOPMENT CORP DJ Basin

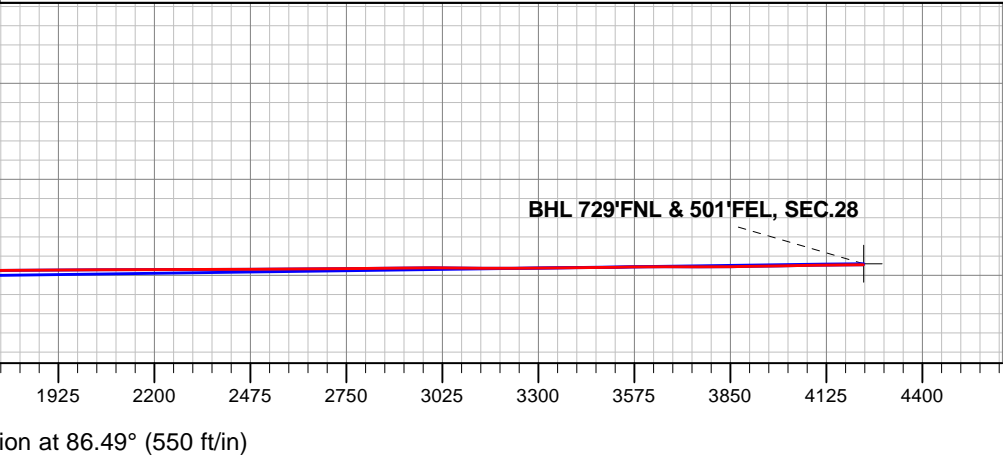
Well Name: **Wiedeman 28F-312**  
Surface Location: Wiedeman 4N66W28F - East Pad Sec.28-T4N-R66W  
North American Datum 1983 , US State Plane 1983, Colorado Northern Zone  
Ground Elevation: 4762.0  
+N/-S+E/-W Northing Easting Latitude Longitude Slot  
0.0 0.01348250.25 3198077.71 40.287170 -104.789970  
RKB - 15 WELL @ 4775.0ft (Ensign Rig #134 RKB - 13')

FINAL SURVEY

Projected Bottom Hole Location  
11617'MD 7122TVD 265'N & 4223'E of SHL  
90.7 degree Incl @ 86.5 degree AZM



Wiedeman 4N66W28F - East Pad Sec.28-T4N-R66W Wiedeman 28F-312 Wellbore #1 6:52, October 20 2015	ANNOTATIONS		
	TVD	MD	Annotation
	7165.8	7668.0	Deepest TVD Drilled - 7167.8'
LEGEND			
Wiedeman 28F-312, Wellbore #1, Plan #2 (10-13-15) V0			
Wellbore #1			
Survey #1			





# **PETROLEUM DEVELOPMENT CORP DJ Basin**

**SEC.28-T4N-R66W**

**Wiedeman 4N66W28F - East Pad Sec.28-T4N-R66W**

**Wiedeman 28F-312**

**Wellbore #1**

**Survey: Survey #1**

## **Standard Survey Report**

**20 October, 2015**

<b>Company:</b>	PETROLEUM DEVELOPMENT CORP DJ Basin	<b>Local Co-ordinate Reference:</b>	Well Wiedeman 28F-312
<b>Project:</b>	SEC.28-T4N-R66W	<b>TVD Reference:</b>	WELL @ 4775.0ft (Ensign Rig #134 RKB - 13')
<b>Site:</b>	Wiedeman 4N66W28F - East Pad Sec.28-T4N-R66W	<b>MD Reference:</b>	WELL @ 4775.0ft (Ensign Rig #134 RKB - 13')
<b>Well:</b>	Wiedeman 28F-312	<b>North Reference:</b>	True
<b>Wellbore:</b>	Wellbore #1	<b>Survey Calculation Method:</b>	Minimum Curvature
<b>Design:</b>	Wellbore #1	<b>Database:</b>	US_EDM

<b>Project</b>	SEC.28-T4N-R66W, Weld County, Colorado		
<b>Map System:</b>	US State Plane 1983	<b>System Datum:</b>	Mean Sea Level
<b>Geo Datum:</b>	North American Datum 1983		Using Well Reference Point
<b>Map Zone:</b>	Colorado Northern Zone		Using geodetic scale factor

Site		Wiedeman 4N66W28F - East Pad Sec.28-T4N-R66W			
Site Position:		Northing:	1,348,308.56 usft	Latitude:	40.287330
From:	Lat/Long	Easting:	3,198,077.24 usft	Longitude:	-104.789970
Position Uncertainty:	0.0 ft	Slot Radius:	13-3/16 "	Grid Convergence:	0.46 °

Well	Wiedeman 28F-312					
Well Position	+N/-S	0.0 ft	Northing:	1,348,250.25 usft	Latitude:	40.287170
	+E/-W	0.0 ft	Easting:	3,198,077.71 usft	Longitude:	-104.789970
Position Uncertainty		0.0 ft	Wellhead Elevation:	ft	Ground Level:	4,762.0 ft

<b>Wellbore</b>	Wellbore #1				
<b>Magnetics</b>	<b>Model Name</b>	<b>Sample Date</b>	<b>Declination (°)</b>	<b>Dip Angle (°)</b>	<b>Field Strength (nT)</b>
	IGRF2010	9/21/2015	8.29	66.81	52,621

<b>Design</b>	Wellbore #1				
<b>Audit Notes:</b>					
<b>Version:</b>	1.0	<b>Phase:</b>	ACTUAL	<b>Tie On Depth:</b>	0.0
<b>Vertical Section:</b>	<b>Depth From (TVD) (ft)</b>	<b>+N/-S (ft)</b>	<b>+E/-W (ft)</b>	<b>Direction (°)</b>	
	0.0	0.0	0.0	86.49	

<b>Survey Program</b>	<b>Date</b>	10/20/2015			
<b>From (ft)</b>	<b>To (ft)</b>	<b>Survey (Wellbore)</b>	<b>Tool Name</b>	<b>Description</b>	
74.0	11,617.0	Survey #1 (Wellbore #1)	MWD	MWD - Standard	

<b>Survey</b>										
<b>Measured Depth (ft)</b>	<b>Inclination (°)</b>	<b>Azimuth (°)</b>	<b>Vertical Depth (ft)</b>	<b>+N/-S (ft)</b>	<b>+E/-W (ft)</b>	<b>Vertical Section (ft)</b>	<b>Dogleg Rate (°/100usft)</b>	<b>Build Rate (°/100usft)</b>	<b>Turn Rate (°/100usft)</b>	
0.0	0.00	0.00	0.0	0.0	0.0	0.0	0.00	0.00	0.00	
1.0	0.01	156.00	1.0	0.0	0.0	0.0	0.81	0.81	0.00	
<b>SHL 978'FNL &amp; 540'FWL, SEC.28</b>										
74.0	0.60	156.00	74.0	-0.4	0.2	0.1	0.81	0.81	0.00	
166.0	0.40	145.40	166.0	-1.1	0.5	0.5	0.24	-0.22	-11.52	
259.0	0.50	160.40	259.0	-1.7	0.9	0.8	0.17	0.11	16.13	
351.0	0.40	161.80	351.0	-2.4	1.1	0.9	0.11	-0.11	1.52	
443.0	0.40	150.20	443.0	-3.0	1.4	1.2	0.09	0.00	-12.61	
535.0	0.40	158.80	535.0	-3.6	1.6	1.4	0.07	0.00	9.35	
628.0	0.10	171.60	628.0	-3.9	1.8	1.5	0.33	-0.32	13.76	

<b>Company:</b>	PETROLEUM DEVELOPMENT CORP DJ Basin	<b>Local Co-ordinate Reference:</b>	Well Wiedeman 28F-312
<b>Project:</b>	SEC.28-T4N-R66W	<b>TVD Reference:</b>	WELL @ 4775.0ft (Ensign Rig #134 RKB - 13')
<b>Site:</b>	Wiedeman 4N66W28F - East Pad Sec.28-T4N-R66W	<b>MD Reference:</b>	WELL @ 4775.0ft (Ensign Rig #134 RKB - 13')
<b>Well:</b>	Wiedeman 28F-312	<b>North Reference:</b>	True
<b>Wellbore:</b>	Wellbore #1	<b>Survey Calculation Method:</b>	Minimum Curvature
<b>Design:</b>	Wellbore #1	<b>Database:</b>	US_EDM

Survey										
Measured Depth (ft)	Inclination (°)	Azimuth (°)	Vertical Depth (ft)	+N/-S (ft)	+E/-W (ft)	Vertical Section (ft)	Dogleg Rate (°/100usft)	Build Rate (°/100usft)	Turn Rate (°/100usft)	
720.0	0.40	215.20	720.0	-4.3	1.6	1.3	0.36	0.33	47.39	
813.0	0.50	222.60	813.0	-4.8	1.1	0.8	0.12	0.11	7.96	
895.0	0.50	234.00	895.0	-5.3	0.6	0.3	0.12	0.00	13.90	
977.0	0.60	228.20	977.0	-5.8	0.0	-0.4	0.14	0.12	-7.07	
1,108.0	0.90	222.40	1,108.0	-7.0	-1.2	-1.7	0.24	0.23	-4.43	
1,201.0	0.80	210.60	1,201.0	-8.1	-2.0	-2.5	0.22	-0.11	-12.69	
1,293.0	0.60	198.70	1,292.9	-9.1	-2.5	-3.1	0.27	-0.22	-12.93	
1,386.0	1.40	340.30	1,385.9	-8.5	-3.1	-3.6	2.05	0.86	152.26	
1,478.0	2.20	326.50	1,477.9	-6.0	-4.4	-4.8	0.98	0.87	-15.00	
1,571.0	3.80	317.30	1,570.8	-2.2	-7.5	-7.6	1.79	1.72	-9.89	
1,663.0	4.20	317.10	1,662.5	2.5	-11.9	-11.7	0.44	0.43	-0.22	
1,756.0	4.80	304.10	1,755.3	7.1	-17.4	-16.9	1.27	0.65	-13.98	
1,848.0	4.80	301.00	1,846.9	11.3	-23.9	-23.2	0.28	0.00	-3.37	
1,943.0	6.00	301.30	1,941.5	15.9	-31.5	-30.5	1.26	1.26	0.32	
2,039.0	6.00	302.20	2,037.0	21.2	-40.1	-38.7	0.10	0.00	0.94	
2,134.0	7.70	303.30	2,131.3	27.3	-49.6	-47.8	1.79	1.79	1.16	
2,229.0	7.40	302.20	2,225.5	34.1	-60.1	-57.9	0.35	-0.32	-1.16	
2,324.0	8.30	296.90	2,319.6	40.4	-71.4	-68.8	1.21	0.95	-5.58	
2,420.0	8.00	297.50	2,414.6	46.7	-83.5	-80.5	0.32	-0.31	0.63	
2,515.0	9.10	301.80	2,508.6	53.7	-95.7	-92.3	1.34	1.16	4.53	
2,610.0	9.40	300.40	2,602.3	61.6	-108.8	-104.8	0.39	0.32	-1.47	
2,706.0	9.30	301.80	2,697.0	69.6	-122.2	-117.7	0.26	-0.10	1.46	
2,801.0	9.50	301.10	2,790.8	77.7	-135.4	-130.4	0.24	0.21	-0.74	
2,896.0	8.50	299.70	2,884.6	85.2	-148.2	-142.7	1.08	-1.05	-1.47	
2,991.0	10.30	295.70	2,978.3	92.4	-162.0	-156.0	2.01	1.89	-4.21	
3,087.0	10.20	294.30	3,072.8	99.6	-177.4	-171.0	0.28	-0.10	-1.46	
3,182.0	9.10	295.70	3,166.4	106.3	-191.9	-185.0	1.18	-1.16	1.47	
3,277.0	7.70	294.60	3,260.4	112.2	-204.4	-197.2	1.48	-1.47	-1.16	
3,372.0	7.60	301.10	3,354.6	118.1	-215.6	-208.0	0.92	-0.11	6.84	
3,468.0	7.10	306.60	3,449.8	125.0	-225.8	-217.7	0.90	-0.52	5.73	
3,563.0	6.20	302.60	3,544.2	131.2	-234.8	-226.4	1.06	-0.95	-4.21	
3,658.0	7.00	317.10	3,638.5	138.2	-243.1	-234.2	1.94	0.84	15.26	
3,753.0	6.20	317.70	3,732.9	146.3	-250.5	-241.1	0.85	-0.84	0.63	
3,848.0	8.80	314.30	3,827.1	155.1	-259.1	-249.2	2.78	2.74	-3.58	
3,944.0	9.10	314.50	3,921.9	165.6	-269.8	-259.2	0.31	0.31	0.21	
4,039.0	7.80	313.60	4,015.9	175.3	-279.8	-268.6	1.38	-1.37	-0.95	
4,134.0	7.70	297.30	4,110.0	182.7	-290.2	-278.4	2.31	-0.11	-17.16	
4,229.0	6.80	291.60	4,204.3	187.7	-301.1	-289.0	1.21	-0.95	-6.00	
4,324.0	7.90	295.30	4,298.5	192.5	-312.2	-299.8	1.26	1.16	3.89	
4,419.0	6.90	293.80	4,392.7	197.6	-323.3	-310.6	1.07	-1.05	-1.58	
4,515.0	6.30	291.10	4,488.1	201.8	-333.5	-320.5	0.70	-0.63	-2.81	
4,610.0	7.60	300.80	4,582.4	206.9	-343.8	-330.5	1.84	1.37	10.21	

<b>Company:</b>	PETROLEUM DEVELOPMENT CORP DJ Basin	<b>Local Co-ordinate Reference:</b>	Well Wiedeman 28F-312
<b>Project:</b>	SEC.28-T4N-R66W	<b>TVD Reference:</b>	WELL @ 4775.0ft (Ensign Rig #134 RKB - 13')
<b>Site:</b>	Wiedeman 4N66W28F - East Pad Sec.28-T4N-R66W	<b>MD Reference:</b>	WELL @ 4775.0ft (Ensign Rig #134 RKB - 13')
<b>Well:</b>	Wiedeman 28F-312	<b>North Reference:</b>	True
<b>Wellbore:</b>	Wellbore #1	<b>Survey Calculation Method:</b>	Minimum Curvature
<b>Design:</b>	Wellbore #1	<b>Database:</b>	US_EDM

Survey									
Measured Depth (ft)	Inclination (°)	Azimuth (°)	Vertical Depth (ft)	+N/-S (ft)	+E/-W (ft)	Vertical Section (ft)	Dogleg Rate (°/100usft)	Build Rate (°/100usft)	Turn Rate (°/100usft)
4,705.0	6.90	304.10	4,676.6	213.3	-353.9	-340.2	0.86	-0.74	3.47
4,800.0	8.60	291.10	4,770.7	219.1	-365.2	-351.1	2.56	1.79	-13.68
4,896.0	8.40	289.40	4,865.7	224.0	-378.5	-364.1	0.33	-0.21	-1.77
4,991.0	7.20	288.10	4,959.8	228.2	-390.8	-376.1	1.28	-1.26	-1.37
5,086.0	8.00	290.10	5,054.0	232.3	-402.6	-387.6	0.89	0.84	2.11
5,181.0	6.50	288.80	5,148.2	236.3	-413.9	-398.7	1.59	-1.58	-1.37
5,277.0	8.80	287.40	5,243.3	240.2	-426.1	-410.6	2.40	2.40	-1.46
5,372.0	7.30	282.20	5,337.4	243.7	-438.9	-423.2	1.75	-1.58	-5.47
5,467.0	6.00	277.40	5,431.8	245.6	-449.7	-433.9	1.49	-1.37	-5.05
5,563.0	6.90	276.20	5,527.2	246.9	-460.4	-444.5	0.95	0.94	-1.25
5,658.0	6.50	279.30	5,621.5	248.4	-471.4	-455.3	0.57	-0.42	3.26
5,753.0	5.70	269.10	5,716.0	249.2	-481.4	-465.3	1.41	-0.84	-10.74
5,848.0	3.20	265.50	5,810.7	248.9	-488.8	-472.7	2.65	-2.63	-3.79
5,944.0	2.30	267.70	5,906.6	248.6	-493.4	-477.3	0.94	-0.94	2.29
6,039.0	2.00	269.90	6,001.5	248.5	-497.0	-480.8	0.33	-0.32	2.32
6,134.0	1.80	313.30	6,096.4	249.5	-499.7	-483.5	1.49	-0.21	45.68
6,230.0	1.80	314.90	6,192.4	251.6	-501.9	-485.5	0.05	0.00	1.67
6,325.0	1.70	313.40	6,287.4	253.6	-504.0	-487.5	0.12	-0.11	-1.58
6,420.0	1.20	95.10	6,382.3	254.5	-504.0	-487.5	2.89	-0.53	149.16
6,516.0	3.60	95.30	6,478.3	254.2	-500.0	-483.5	2.50	2.50	0.21
6,611.0	11.50	91.10	6,572.4	253.7	-487.5	-471.1	8.33	8.32	-4.42
6,706.0	19.20	95.00	6,663.9	252.1	-462.5	-446.2	8.17	8.11	4.11
6,802.0	25.00	96.90	6,752.8	248.3	-426.6	-410.6	6.09	6.04	1.98
6,897.0	32.40	92.30	6,836.1	244.9	-381.1	-365.4	8.12	7.79	-4.84
6,993.0	40.20	84.60	6,913.4	246.8	-324.5	-308.8	9.40	8.13	-8.02
7,086.0	48.10	81.90	6,980.1	254.5	-260.2	-244.2	8.73	8.49	-2.90
7,181.0	55.10	86.90	7,039.1	261.6	-186.2	-169.8	8.44	7.37	5.26
7,276.0	64.40	87.90	7,086.9	265.3	-104.3	-87.9	9.83	9.79	1.05
7,371.0	72.00	87.90	7,122.2	268.5	-16.2	0.2	8.00	8.00	0.00
7,466.0	76.80	89.00	7,147.7	271.0	75.2	91.7	5.17	5.05	1.16
7,561.0	84.50	89.00	7,163.1	272.6	168.9	185.2	8.11	8.11	0.00
7,616.7	87.62	88.33	7,167.0	273.9	224.4	240.8	5.72	5.60	-1.20
7"									
7,668.0	90.49	87.72	7,167.8	275.7	275.7	292.0	5.72	5.60	-1.19
Deepest TVD Drilled - 7167.8'									
7,670.0	90.60	87.70	7,167.8	275.7	277.7	294.0	5.72	5.60	-1.19
7,765.0	91.30	90.40	7,166.2	277.3	372.6	388.9	2.94	0.74	2.84
7,860.0	91.30	90.00	7,164.1	277.0	467.6	483.7	0.42	0.00	-0.42
7,955.0	91.50	92.30	7,161.7	275.1	562.6	578.3	2.43	0.21	2.42
8,051.0	91.50	92.00	7,159.2	271.5	658.5	673.8	0.31	0.00	-0.31
8,146.0	90.20	91.60	7,157.8	268.5	753.4	768.4	1.43	-1.37	-0.42
8,241.0	90.50	90.90	7,157.2	266.4	848.4	863.1	0.80	0.32	-0.74
8,336.0	90.60	90.90	7,156.3	264.9	943.4	957.8	0.11	0.11	0.00

<b>Company:</b>	PETROLEUM DEVELOPMENT CORP DJ Basin	<b>Local Co-ordinate Reference:</b>	Well Wiedeman 28F-312
<b>Project:</b>	SEC.28-T4N-R66W	<b>TVD Reference:</b>	WELL @ 4775.0ft (Ensign Rig #134 RKB - 13')
<b>Site:</b>	Wiedeman 4N66W28F - East Pad Sec.28-T4N-R66W	<b>MD Reference:</b>	WELL @ 4775.0ft (Ensign Rig #134 RKB - 13')
<b>Well:</b>	Wiedeman 28F-312	<b>North Reference:</b>	True
<b>Wellbore:</b>	Wellbore #1	<b>Survey Calculation Method:</b>	Minimum Curvature
<b>Design:</b>	Wellbore #1	<b>Database:</b>	US_EDM

Survey									
Measured Depth (ft)	Inclination (°)	Azimuth (°)	Vertical Depth (ft)	+N/-S (ft)	+E/-W (ft)	Vertical Section (ft)	Dogleg Rate (°/100usft)	Build Rate (°/100usft)	Turn Rate (°/100usft)
8,431.0	90.90	90.00	7,155.1	264.2	1,038.3	1,052.6	1.00	0.32	-0.95
8,526.0	91.10	89.30	7,153.4	264.8	1,133.3	1,147.4	0.77	0.21	-0.74
8,621.0	91.10	91.10	7,151.6	264.4	1,228.3	1,242.2	1.89	0.00	1.89
8,717.0	92.20	90.20	7,148.8	263.3	1,324.3	1,337.9	1.48	1.15	-0.94
8,812.0	91.70	91.60	7,145.6	261.9	1,419.2	1,432.6	1.56	-0.53	1.47
8,907.0	91.90	91.40	7,142.6	259.4	1,514.1	1,527.1	0.30	0.21	-0.21
9,002.0	90.90	92.30	7,140.3	256.3	1,609.0	1,621.7	1.42	-1.05	0.95
9,097.0	90.00	92.30	7,139.6	252.5	1,703.9	1,716.2	0.95	-0.95	0.00
9,192.0	91.40	91.60	7,138.4	249.3	1,798.9	1,810.8	1.65	1.47	-0.74
9,287.0	90.60	91.60	7,136.7	246.6	1,893.8	1,905.4	0.84	-0.84	0.00
9,383.0	90.80	91.40	7,135.6	244.1	1,989.8	2,001.0	0.29	0.21	-0.21
9,478.0	89.30	91.40	7,135.5	241.8	2,084.8	2,095.6	1.58	-1.58	0.00
9,573.0	89.80	91.30	7,136.2	239.5	2,179.7	2,190.3	0.54	0.53	-0.11
9,668.0	90.00	90.90	7,136.4	237.7	2,274.7	2,285.0	0.47	0.21	-0.42
9,763.0	90.80	90.60	7,135.7	236.5	2,369.7	2,379.7	0.90	0.84	-0.32
9,858.0	90.60	90.70	7,134.6	235.4	2,464.7	2,474.5	0.24	-0.21	0.11
9,954.0	89.80	91.40	7,134.2	233.6	2,560.7	2,570.2	1.11	-0.83	0.73
10,049.0	90.70	90.70	7,133.8	231.9	2,655.6	2,664.9	1.20	0.95	-0.74
10,144.0	90.10	90.70	7,133.2	230.7	2,750.6	2,759.6	0.63	-0.63	0.00
10,239.0	91.00	90.70	7,132.2	229.6	2,845.6	2,854.3	0.95	0.95	0.00
10,334.0	90.50	90.20	7,131.0	228.8	2,940.6	2,949.1	0.74	-0.53	-0.53
10,429.0	89.00	89.10	7,131.4	229.4	3,035.6	3,044.0	1.96	-1.58	-1.16
10,525.0	89.90	89.10	7,132.3	230.9	3,131.6	3,139.9	0.94	0.94	0.00
10,620.0	90.20	88.40	7,132.3	233.0	3,226.6	3,234.8	0.80	0.32	-0.74
10,715.0	91.10	88.60	7,131.2	235.5	3,321.5	3,329.7	0.97	0.95	0.21
10,810.0	90.00	88.30	7,130.3	238.0	3,416.5	3,424.7	1.20	-1.16	-0.32
10,905.0	90.70	88.60	7,129.7	240.6	3,511.4	3,519.6	0.80	0.74	0.32
11,000.0	91.50	88.40	7,127.9	243.1	3,606.4	3,614.5	0.87	0.84	-0.21
11,096.0	89.10	87.40	7,127.4	246.6	3,702.3	3,710.5	2.71	-2.50	-1.04
11,191.0	90.20	88.80	7,127.9	249.8	3,797.3	3,805.4	1.87	1.16	1.47
11,286.0	91.10	88.80	7,126.9	251.8	3,892.2	3,900.4	0.95	0.95	0.00
11,381.0	90.80	88.80	7,125.3	253.7	3,987.2	3,995.3	0.32	-0.32	0.00
11,476.0	91.10	87.00	7,123.7	257.2	4,082.1	4,090.2	1.92	0.32	-1.89
11,560.0	90.70	86.50	7,122.4	262.0	4,166.0	4,174.2	0.76	-0.48	-0.60
11,617.0	90.70	86.50	7,121.7	265.5	4,222.9	4,231.2	0.00	0.00	0.00
BHL 735'FNL & 500'FEL, SEC.28									

<b>Company:</b>	PETROLEUM DEVELOPMENT CORP DJ Basin	<b>Local Co-ordinate Reference:</b>	Well Wiedeman 28F-312
<b>Project:</b>	SEC.28-T4N-R66W	<b>TVD Reference:</b>	WELL @ 4775.0ft (Ensign Rig #134 RKB - 13')
<b>Site:</b>	Wiedeman 4N66W28F - East Pad Sec.28-T4N-R66W	<b>MD Reference:</b>	WELL @ 4775.0ft (Ensign Rig #134 RKB - 13')
<b>Well:</b>	Wiedeman 28F-312	<b>North Reference:</b>	True
<b>Wellbore:</b>	Wellbore #1	<b>Survey Calculation Method:</b>	Minimum Curvature
<b>Design:</b>	Wellbore #1	<b>Database:</b>	US_EDM

Design Targets									
Target Name - hit/miss target - Shape	Dip Angle (°)	Dip Dir. (°)	TVD (ft)	+N/-S (ft)	+E/-W (ft)	Northing (usft)	Easting (usft)	Latitude	Longitude
SHL 978'FNL & 540'FWI - survey hits target center - Point	0.00	0.00	1.0	0.0	0.0	1,348,250.28	3,198,077.71	40.287170	-104.789970
BHL 735'FNL & 500'FEL - survey misses target center by 8.0ft at 11617.0ft MD (7121.7 TVD, 265.5 N, 4222.9 E) - Point	0.00	0.00	7,117.0	259.0	4,223.8	1,348,543.09	3,202,299.12	40.287880	-104.774830

Casing Points					
Measured Depth (ft)	Vertical Depth (ft)	Name		Casing Diameter (")	Hole Diameter (")
7,616.7	7,167.0	7"		7	8-3/4

Survey Annotations					
Measured Depth (ft)	Vertical Depth (ft)	Local Coordinates		Comment	
		+N/-S (ft)	+E/-W (ft)		
7,668.0	7,165.8	275.8	277.7	Deepest TVD Drilled - 7167.8'	

Checked By: _____	Approved By: _____	Date: _____
-------------------	--------------------	-------------