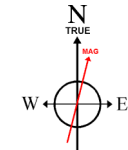


# BAYSWATER E & P LLC

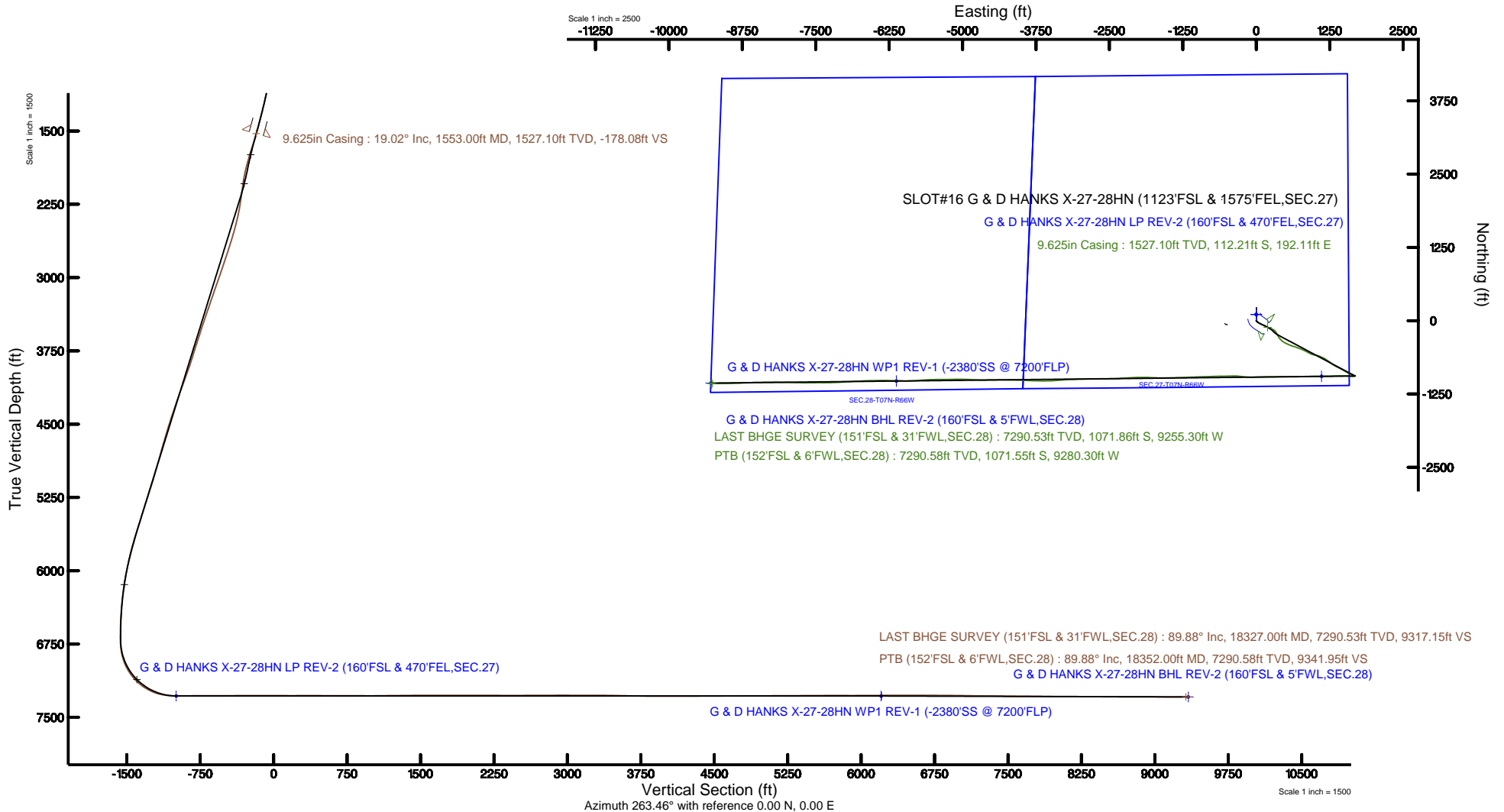


Location: COLORADO Slot: SLOT#16 G & D HANKS X-27-28HN (1123'FSL & 1575'FEL,SEC.27)  
Field: WELD COUNTY (NAD83/TRUE NORTH) Well: G & D HANKS X-27-28HN  
Facility: SEC.27-T07N-R66W Wellbore: G & D HANKS X-27-28HN PWB

Plot reference wellpath is G & D HANKS X-27-28HN PWP (REV-E.0)	Grid System: NAD83 / Lambert Colorado SP, Northern Zone (501), US feet
True vertical depths are referenced to TRUE 38 (4876'GL + 25'KB @ 4901'RKB) (RKB)	North Reference: True north
Measured depths are referenced to TRUE 38 (4876'GL + 25'KB @ 4901'RKB) (RKB)	Scale: True distance
TRUE 38 (4876'GL + 25'KB @ 4901'RKB) (RKB) to Mean Sea Level: 4901 feet	Depths are in feet
Mean Sea Level to Ground level (At Slot: SLOT#16 G & D HANKS X-27-28HN (1123'FSL & 1575'FEL,SEC.27)): 0 feet	Created by: bushjarnh on 2018-06-20
Coordinates are in feet referenced to Slot	Database: Denver



BGGM (1900.0 to 2019.0) Dip: 66.03° Field: 52384.8 nT  
Magnetic North is 8.31 degrees East of True North (at 5/21/2018)  
To correct azimuth from Magnetic to True add 8.31 degrees



# Actual Wellpath Report

G & D HANKS X-27-28HN AWP

Page 1 of 10



## REFERENCE WELLPATH IDENTIFICATION

Operator	BAYSWATER E & P LLC	Slot	SLOT#16 G & D HANKS X-27-28HN (1123'FSL & 1575'FEL,SEC.27)
Area	COLORADO	Well	G & D HANKS X-27-28HN
Field	WELD COUNTY (NAD83/TRUE NORTH)	Wellbore	G & D HANKS X-27-28HN AWB
Facility	SEC.27-T07N-R66W		

## REPORT SETUP INFORMATION

Projection System	NAD83 / Lambert Colorado SP, Northern Zone (501), US feet	Software System	WellArchitect® 5.1
North Reference	True	User	Bushjamh
Scale	0.999970	Report Generated	6/20/2018 at 5:05:23 PM
Convergence at slot	0.48° East	Database/Source file	Denver/G__D_HANKS_X-27-28HN_AWP.xml

## WELLPATH LOCATION

	Local coordinates		Grid coordinates		Geographic coordinates	
	North[ft]	East[ft]	Easting[US ft]	Northing[US ft]	Latitude	Longitude
Slot Location	-225.15	-0.56	3205704.48	1441077.39	40°32'30.484"N	104°45'35.478"W
Facility Reference Pt			3205703.16	1441302.53	40°32'32.708"N	104°45'35.471"W
Field Reference Pt			3174587.00	1430859.71	40°30'51.890"N	104°52'19.470"W

## WELLPATH DATUM

Calculation method	Minimum curvature	TRUE 38 (4876'GL + 25'KB @ 4901'RKB) (RKB) to Facility Vertical Datum	4901.00ft
Horizontal Reference Pt	Slot	TRUE 38 (4876'GL + 25'KB @ 4901'RKB) (RKB) to Mean Sea Level	4901.00ft
Vertical Reference Pt	TRUE 38 (4876'GL + 25'KB @ 4901'RKB) (RKB)	TRUE 38 (4876'GL + 25'KB @ 4901'RKB) (RKB) to Ground Level at Slot (SLOT#16 G & D HANKS X-27-28HN (1123'FSL & 1575'FEL,SEC.27))	4901.00ft
MD Reference Pt	TRUE 38 (4876'GL + 25'KB @ 4901'RKB) (RKB)	Section Origin	N 0.00, E 0.00 ft
Field Vertical Reference	Mean Sea Level	Section Azimuth	263.41°

# Actual Wellpath Report

G & D HANKS X-27-28HN AWP

Page 2 of 10

## REFERENCE WELLPATH IDENTIFICATION

Operator	BAYSWATER E & P LLC	Slot	SLOT#16 G & D HANKS X-27-28HN (1123'FSL & 1575'FEL,SEC.27)
Area	COLORADO	Well	G & D HANKS X-27-28HN
Field	WELD COUNTY (NAD83/TRUE NORTH)	Wellbore	G & D HANKS X-27-28HN AWB
Facility	SEC.27-T07N-R66W		

## WELLPATH DATA (196 stations) † = interpolated/extrapolated station

MD [ft]	Inclination [°]	Azimuth [°]	TVD [ft]	Vert Sect [ft]	North [ft]	East [ft]	Latitude	Longitude	DLS [°/100ft]	Comments
0.00†	0.000	172.580	0.00	0.00	0.00	0.00	40°32'30.484"N	104°45'35.478"W	0.00	
25.00	0.000	172.580	25.00	0.00	0.00	0.00	40°32'30.484"N	104°45'35.478"W	0.00	
210.00	0.710	172.580	210.00	-0.02	-1.14	0.15	40°32'30.472"N	104°45'35.476"W	0.38	
305.00	1.050	174.720	304.98	-0.01	-2.59	0.30	40°32'30.458"N	104°45'35.474"W	0.36	
399.00	2.050	143.950	398.95	-0.81	-4.80	1.37	40°32'30.436"N	104°45'35.460"W	1.35	
494.00	3.630	131.830	493.83	-3.64	-8.18	4.61	40°32'30.403"N	104°45'35.418"W	1.77	
588.00	4.850	131.880	587.57	-8.25	-12.82	9.79	40°32'30.357"N	104°45'35.351"W	1.30	
683.00	6.130	128.060	682.13	-14.53	-18.63	16.77	40°32'30.300"N	104°45'35.261"W	1.40	
777.00	8.290	130.370	775.39	-22.72	-26.11	25.89	40°32'30.226"N	104°45'35.143"W	2.32	
872.00	9.340	122.250	869.27	-33.40	-34.66	37.63	40°32'30.141"N	104°45'34.991"W	1.71	
966.00	10.970	118.760	961.79	-46.64	-43.04	51.92	40°32'30.058"N	104°45'34.805"W	1.85	
1061.00	12.910	119.320	1054.73	-62.61	-52.58	69.10	40°32'29.964"N	104°45'34.583"W	2.05	
1155.00	14.160	114.290	1146.12	-80.99	-62.46	88.74	40°32'29.866"N	104°45'34.329"W	1.83	
1250.00	15.750	112.870	1237.90	-102.19	-72.25	111.21	40°32'29.770"N	104°45'34.038"W	1.72	
1344.00	16.950	114.300	1328.10	-125.06	-82.85	135.45	40°32'29.665"N	104°45'33.724"W	1.35	
1438.00	17.430	118.370	1417.90	-148.35	-95.17	160.33	40°32'29.543"N	104°45'33.401"W	1.38	
1509.00	18.510	118.420	1485.44	-166.30	-105.59	179.60	40°32'29.440"N	104°45'33.152"W	1.52	
1605.00	19.620	116.100	1576.17	-192.35	-119.94	207.48	40°32'29.298"N	104°45'32.791"W	1.40	
1699.00	19.600	106.890	1664.74	-220.10	-131.46	236.74	40°32'29.185"N	104°45'32.412"W	3.29	
1794.00	18.790	113.580	1754.47	-247.95	-142.21	266.01	40°32'29.078"N	104°45'32.032"W	2.47	
1888.00	18.610	120.110	1843.52	-273.06	-155.80	292.87	40°32'28.944"N	104°45'31.685"W	2.23	
1982.00	18.460	134.830	1932.69	-294.38	-173.82	316.41	40°32'28.766"N	104°45'31.380"W	4.97	
2076.00	19.190	146.960	2021.70	-310.55	-197.27	335.40	40°32'28.534"N	104°45'31.134"W	4.23	
2171.00	20.760	154.270	2110.99	-323.03	-225.54	351.22	40°32'28.255"N	104°45'30.929"W	3.10	
2266.00	21.070	151.100	2199.74	-335.04	-255.65	366.78	40°32'27.957"N	104°45'30.727"W	1.23	
2361.00	21.180	146.960	2288.36	-349.17	-284.99	384.39	40°32'27.667"N	104°45'30.499"W	1.57	
2455.00	21.270	137.360	2376.01	-366.77	-311.78	405.21	40°32'27.403"N	104°45'30.230"W	3.69	
2550.00	21.170	132.010	2464.58	-388.26	-335.94	429.63	40°32'27.164"N	104°45'29.913"W	2.04	
2644.00	21.270	125.220	2552.22	-412.20	-357.13	456.17	40°32'26.955"N	104°45'29.569"W	2.62	
2739.00	21.160	120.840	2640.78	-438.66	-375.86	484.97	40°32'26.770"N	104°45'29.196"W	1.67	

# Actual Wellpath Report

G & D HANKS X-27-28HN AWP

Page 3 of 10

## REFERENCE WELLPATH IDENTIFICATION

Operator	BAYSWATER E & P LLC	Slot	SLOT#16 G & D HANKS X-27-28HN (1123'FSL & 1575'FEL,SEC.27)
Area	COLORADO	Well	G & D HANKS X-27-28HN
Field	WELD COUNTY (NAD83/TRUE NORTH)	Wellbore	G & D HANKS X-27-28HN AWP
Facility	SEC.27-T07N-R66W		

## WELLPATH DATA (196 stations)

MD [ft]	Inclination [°]	Azimuth [°]	TVD [ft]	Vert Sect [ft]	North [ft]	East [ft]	Latitude	Longitude	DLS [°/100ft]	Comments
2834.00	20.980	113.900	2729.45	-466.94	-391.54	515.25	40°32'26.615"N	104°45'28.804"W	2.63	
2928.00	21.080	114.600	2817.18	-495.90	-405.40	546.00	40°32'26.478"N	104°45'28.406"W	0.29	
3023.00	21.070	112.590	2905.83	-525.43	-419.07	577.31	40°32'26.343"N	104°45'28.001"W	0.76	
3118.00	21.180	107.750	2994.45	-555.98	-430.86	609.42	40°32'26.226"N	104°45'27.585"W	1.84	
3213.00	20.780	106.000	3083.16	-587.17	-440.74	641.96	40°32'26.128"N	104°45'27.163"W	0.78	
3307.00	20.990	111.780	3170.99	-617.39	-451.58	673.63	40°32'26.021"N	104°45'26.753"W	2.20	
3402.00	21.060	109.770	3259.67	-647.65	-463.67	705.49	40°32'25.902"N	104°45'26.340"W	0.76	
3497.00	20.880	108.680	3348.37	-678.26	-474.87	737.59	40°32'25.791"N	104°45'25.924"W	0.45	
3591.00	21.130	114.220	3436.14	-707.96	-487.18	768.92	40°32'25.669"N	104°45'25.519"W	2.13	
3686.00	20.750	113.850	3524.86	-737.18	-501.01	799.93	40°32'25.533"N	104°45'25.117"W	0.42	
3781.00	21.090	116.090	3613.60	-766.08	-515.33	830.67	40°32'25.391"N	104°45'24.719"W	0.91	
3875.00	20.920	117.420	3701.36	-794.22	-530.50	860.75	40°32'25.241"N	104°45'24.329"W	0.54	
3970.00	20.860	119.770	3790.11	-821.90	-546.71	890.49	40°32'25.081"N	104°45'23.944"W	0.88	
4064.00	21.300	115.570	3877.83	-849.84	-562.39	920.42	40°32'24.926"N	104°45'23.556"W	1.67	
4159.00	21.510	106.930	3966.30	-880.42	-574.91	952.66	40°32'24.802"N	104°45'23.139"W	3.32	
4254.00	21.100	102.180	4054.81	-912.59	-583.59	986.03	40°32'24.717"N	104°45'22.707"W	1.87	
4349.00	21.150	102.210	4143.43	-945.00	-590.82	1019.50	40°32'24.645"N	104°45'22.273"W	0.05	
4444.00	20.910	104.520	4232.10	-977.04	-598.70	1052.66	40°32'24.567"N	104°45'21.844"W	0.91	
4538.00	21.040	113.880	4319.90	-1007.24	-609.74	1084.34	40°32'24.458"N	104°45'21.433"W	3.56	
4632.00	20.950	113.590	4407.66	-1036.32	-623.29	1115.17	40°32'24.324"N	104°45'21.034"W	0.15	
4727.00	21.070	117.580	4496.34	-1065.13	-638.00	1145.87	40°32'24.179"N	104°45'20.636"W	1.51	
4821.00	20.950	121.880	4584.10	-1092.27	-654.70	1175.12	40°32'24.014"N	104°45'20.258"W	1.64	
4916.00	21.020	124.610	4672.80	-1118.39	-673.35	1203.57	40°32'23.830"N	104°45'19.889"W	1.03	
5010.00	21.040	125.800	4760.54	-1143.54	-692.79	1231.13	40°32'23.638"N	104°45'19.532"W	0.45	
5105.00	21.140	128.760	4849.18	-1168.17	-713.49	1258.32	40°32'23.433"N	104°45'19.180"W	1.13	
5200.00	21.220	126.730	4937.76	-1192.72	-734.50	1285.46	40°32'23.225"N	104°45'18.829"W	0.78	
5294.00	21.100	124.580	5025.43	-1217.84	-754.28	1313.02	40°32'23.030"N	104°45'18.471"W	0.84	
5389.00	20.980	119.030	5114.10	-1244.54	-772.24	1341.97	40°32'22.852"N	104°45'18.097"W	2.10	
5483.00	21.130	114.720	5201.83	-1272.70	-787.49	1372.08	40°32'22.702"N	104°45'17.707"W	1.65	
5578.00	20.980	117.630	5290.49	-1301.39	-802.54	1402.70	40°32'22.553"N	104°45'17.310"W	1.11	

# Actual Wellpath Report

G & D HANKS X-27-28HN AWP

Page 4 of 10

## REFERENCE WELLPATH IDENTIFICATION

Operator	BAYSWATER E & P LLC	Slot	SLOT#16 G & D HANKS X-27-28HN (1123'FSL & 1575'FEL,SEC.27)
Area	COLORADO	Well	G & D HANKS X-27-28HN
Field	WELD COUNTY (NAD83/TRUE NORTH)	Wellbore	G & D HANKS X-27-28HN AWB
Facility	SEC.27-T07N-R66W		

## WELLPATH DATA (196 stations)

MD [ft]	Inclination [°]	Azimuth [°]	TVD [ft]	Vert Sect [ft]	North [ft]	East [ft]	Latitude	Longitude	DLS [°/100ft]	Comments
5672.00	21.020	119.410	5378.25	-1328.95	-818.62	1432.30	40°32'22.394"N	104°45'16.927"W	0.68	
5767.00	20.950	118.250	5466.95	-1356.67	-835.03	1462.10	40°32'22.232"N	104°45'16.541"W	0.44	
5861.00	20.830	119.550	5554.77	-1383.96	-851.22	1491.44	40°32'22.072"N	104°45'16.161"W	0.51	
5956.00	18.390	118.070	5644.25	-1409.93	-866.61	1519.36	40°32'21.920"N	104°45'15.799"W	2.62	
6051.00	18.840	119.880	5734.28	-1434.60	-881.30	1545.89	40°32'21.775"N	104°45'15.455"W	0.77	
6146.00	16.710	114.120	5824.75	-1458.68	-894.53	1571.66	40°32'21.644"N	104°45'15.122"W	2.90	
6241.00	15.450	110.270	5916.04	-1481.71	-904.49	1595.99	40°32'21.545"N	104°45'14.807"W	1.74	
6335.00	12.890	110.480	6007.17	-1502.22	-912.50	1617.57	40°32'21.466"N	104°45'14.527"W	2.72	
6430.00	11.150	115.310	6100.08	-1519.46	-920.13	1635.80	40°32'21.391"N	104°45'14.291"W	2.11	
6525.00	9.450	118.100	6193.55	-1533.67	-927.73	1650.98	40°32'21.316"N	104°45'14.094"W	1.86	
6619.00	7.690	123.770	6286.50	-1544.81	-934.87	1663.02	40°32'21.245"N	104°45'13.938"W	2.07	
6714.00	5.590	116.180	6380.86	-1553.55	-940.44	1672.46	40°32'21.190"N	104°45'13.816"W	2.39	
6809.00	2.980	88.200	6475.59	-1559.90	-942.41	1679.08	40°32'21.171"N	104°45'13.730"W	3.44	
6903.00	1.490	78.180	6569.52	-1563.55	-942.08	1682.72	40°32'21.174"N	104°45'13.683"W	1.63	
6998.00	0.730	40.160	6664.50	-1565.22	-941.36	1684.32	40°32'21.181"N	104°45'13.663"W	1.07	
7093.00	4.180	240.940	6759.43	-1562.46	-942.58	1681.68	40°32'21.169"N	104°45'13.697"W	5.13	
7187.00	11.760	255.390	6852.46	-1549.79	-946.67	1669.39	40°32'21.129"N	104°45'13.856"W	8.28	
7282.00	21.830	271.270	6943.34	-1522.62	-948.73	1642.29	40°32'21.108"N	104°45'14.207"W	11.56	
7376.00	32.040	272.740	7027.03	-1480.59	-947.14	1599.79	40°32'21.124"N	104°45'14.757"W	10.88	
7472.00	42.140	273.840	7103.51	-1423.65	-943.76	1542.08	40°32'21.157"N	104°45'15.505"W	10.54	
7566.00	52.180	271.380	7167.35	-1355.68	-940.75	1473.31	40°32'21.187"N	104°45'16.396"W	10.85	
7661.00	62.170	267.860	7218.79	-1276.42	-941.41	1393.61	40°32'21.181"N	104°45'17.428"W	10.96	
7756.00	72.840	267.810	7255.09	-1189.04	-944.72	1306.02	40°32'21.148"N	104°45'18.562"W	11.23	
7850.00	83.580	269.070	7274.26	-1097.52	-947.21	1214.18	40°32'21.124"N	104°45'19.752"W	11.50	
7945.00	90.150	269.780	7279.46	-1003.23	-948.16	1119.38	40°32'21.114"N	104°45'20.980"W	6.96	
8040.00	90.340	269.100	7279.05	-908.76	-949.08	1024.38	40°32'21.105"N	104°45'22.210"W	0.74	
8134.00	90.180	269.370	7278.62	-815.24	-950.34	930.39	40°32'21.093"N	104°45'23.427"W	0.33	
8229.00	90.030	268.940	7278.45	-720.72	-951.74	835.40	40°32'21.079"N	104°45'24.658"W	0.48	
8324.00	89.910	268.710	7278.50	-626.14	-953.69	740.42	40°32'21.060"N	104°45'25.888"W	0.27	
8418.00	90.340	269.830	7278.30	-532.64	-954.89	646.43	40°32'21.048"N	104°45'27.105"W	1.28	

# Actual Wellpath Report

G & D HANKS X-27-28HN AWP

Page 5 of 10

## REFERENCE WELLPATH IDENTIFICATION

Operator	BAYSWATER E & P LLC	Slot	SLOT#16 G & D HANKS X-27-28HN (1123'FSL & 1575'FEL,SEC.27)
Area	COLORADO	Well	G & D HANKS X-27-28HN
Field	WELD COUNTY (NAD83/TRUE NORTH)	Wellbore	G & D HANKS X-27-28HN AWP
Facility	SEC.27-T07N-R66W		

## WELLPATH DATA (196 stations)

MD [ft]	Inclination [°]	Azimuth [°]	TVD [ft]	Vert Sect [ft]	North [ft]	East [ft]	Latitude	Longitude	DLS [°/100ft]	Comments
8513.00	90.430	270.210	7277.66	-438.27	-954.85	551.43	40°32'21.048"N	104°45'28.336"W	0.41	
8608.00	90.090	269.020	7277.23	-343.83	-955.49	456.44	40°32'21.042"N	104°45'29.566"W	1.30	
8702.00	90.490	269.070	7276.75	-250.28	-957.06	362.45	40°32'21.027"N	104°45'30.783"W	0.43	
8797.00	89.970	269.920	7276.37	-155.82	-957.90	267.46	40°32'21.018"N	104°45'32.014"W	1.05	
8891.00	89.660	269.250	7276.67	-62.37	-958.58	173.46	40°32'21.012"N	104°45'33.231"W	0.79	
8986.00	89.880	267.930	7277.05	32.24	-960.91	78.49	40°32'20.988"N	104°45'34.461"W	1.41	
9080.00	89.720	266.900	7277.38	126.01	-965.15	-15.41	40°32'20.947"N	104°45'35.678"W	1.11	
9175.00	90.180	272.040	7277.46	220.45	-966.03	-110.37	40°32'20.938"N	104°45'36.908"W	5.43	
9269.00	90.180	277.230	7277.17	312.62	-958.44	-204.03	40°32'21.013"N	104°45'38.121"W	5.52	
9364.00	89.880	276.510	7277.12	405.01	-947.07	-298.35	40°32'21.125"N	104°45'39.342"W	0.82	
9459.00	89.720	268.780	7277.45	498.71	-942.69	-393.17	40°32'21.168"N	104°45'40.570"W	8.14	
9554.00	89.970	268.340	7277.71	593.33	-945.08	-488.14	40°32'21.145"N	104°45'41.800"W	0.53	
9648.00	89.910	269.780	7277.81	686.87	-946.62	-582.13	40°32'21.130"N	104°45'43.018"W	1.53	
9743.00	89.660	268.000	7278.16	781.43	-948.46	-677.11	40°32'21.111"N	104°45'44.248"W	1.89	
9837.00	89.880	267.620	7278.54	875.15	-952.06	-771.04	40°32'21.076"N	104°45'45.465"W	0.47	
9932.00	89.820	268.520	7278.79	969.84	-955.26	-865.98	40°32'21.044"N	104°45'46.694"W	0.95	
10027.00	90.520	268.270	7278.51	1064.48	-957.92	-960.94	40°32'21.018"N	104°45'47.924"W	0.78	
10121.00	90.740	267.360	7277.47	1158.19	-961.50	-1054.87	40°32'20.982"N	104°45'49.141"W	1.00	
10216.00	90.460	267.810	7276.48	1252.94	-965.50	-1149.78	40°32'20.943"N	104°45'50.370"W	0.56	
10310.00	90.620	268.160	7275.59	1346.63	-968.81	-1243.72	40°32'20.910"N	104°45'51.587"W	0.41	
10404.00	90.490	268.280	7274.68	1440.30	-971.73	-1337.67	40°32'20.881"N	104°45'52.804"W	0.19	
10499.00	90.000	268.650	7274.28	1534.93	-974.27	-1432.63	40°32'20.856"N	104°45'54.034"W	0.65	
10593.00	89.910	268.990	7274.35	1628.51	-976.21	-1526.61	40°32'20.837"N	104°45'55.251"W	0.37	
10688.00	90.030	270.960	7274.40	1722.88	-976.25	-1621.61	40°32'20.836"N	104°45'56.481"W	2.08	
10783.00	89.910	272.030	7274.45	1816.94	-973.77	-1716.57	40°32'20.861"N	104°45'57.711"W	1.13	
10877.00	89.940	272.990	7274.57	1909.75	-969.65	-1810.48	40°32'20.901"N	104°45'58.927"W	1.02	
10972.00	89.970	270.430	7274.65	2003.75	-966.82	-1905.43	40°32'20.929"N	104°46'00.157"W	2.69	
11066.00	90.000	269.280	7274.67	2097.16	-967.06	-1999.43	40°32'20.927"N	104°46'01.375"W	1.22	
11160.00	90.000	266.460	7274.67	2190.86	-970.55	-2093.35	40°32'20.892"N	104°46'02.591"W	3.00	
11255.00	89.780	266.360	7274.85	2285.73	-976.50	-2188.17	40°32'20.833"N	104°46'03.819"W	0.25	



# Actual Wellpath Report

G & D HANKS X-27-28HN AWP

Page 6 of 10

## REFERENCE WELLPATH IDENTIFICATION

Operator	BAYSWATER E & P LLC	Slot	SLOT#16 G & D HANKS X-27-28HN (1123'FSL & 1575'FEL,SEC.27)
Area	COLORADO	Well	G & D HANKS X-27-28HN
Field	WELD COUNTY (NAD83/TRUE NORTH)	Wellbore	G & D HANKS X-27-28HN AWB
Facility	SEC.27-T07N-R66W		

## WELLPATH DATA (196 stations)

MD [ft]	Inclination [°]	Azimuth [°]	TVD [ft]	Vert Sect [ft]	North [ft]	East [ft]	Latitude	Longitude	DLS [°/100ft]	Comments
11349.00	90.060	266.290	7274.99	2379.61	-982.52	-2281.97	40°32'20.774"N	104°46'05.034"W	0.31	
11443.00	89.910	267.220	7275.01	2473.45	-987.84	-2375.82	40°32'20.721"N	104°46'06.250"W	1.00	
11537.00	90.220	268.600	7274.90	2567.16	-991.27	-2469.76	40°32'20.687"N	104°46'07.466"W	1.50	
11632.00	90.180	270.120	7274.57	2661.64	-992.33	-2564.75	40°32'20.677"N	104°46'08.697"W	1.60	
11727.00	90.250	269.960	7274.22	2756.01	-992.27	-2659.75	40°32'20.677"N	104°46'09.927"W	0.18	
11822.00	90.250	269.320	7273.80	2850.45	-992.86	-2754.74	40°32'20.671"N	104°46'11.158"W	0.67	
11916.00	90.000	269.220	7273.60	2943.96	-994.06	-2848.74	40°32'20.659"N	104°46'12.375"W	0.29	
12011.00	89.850	268.920	7273.72	3038.49	-995.60	-2943.72	40°32'20.644"N	104°46'13.605"W	0.35	
12105.00	89.940	267.610	7273.89	3132.15	-998.45	-3037.68	40°32'20.616"N	104°46'14.822"W	1.40	
12200.00	90.000	267.920	7273.94	3226.88	-1002.15	-3132.61	40°32'20.579"N	104°46'16.052"W	0.33	
12294.00	89.910	267.140	7274.02	3320.64	-1006.21	-3226.52	40°32'20.539"N	104°46'17.268"W	0.84	
12389.00	88.830	264.800	7275.06	3415.53	-1012.88	-3321.27	40°32'20.473"N	104°46'18.495"W	2.71	
12484.00	89.080	265.890	7276.79	3510.46	-1020.59	-3415.94	40°32'20.396"N	104°46'19.721"W	1.18	
12579.00	88.770	268.210	7278.58	3605.24	-1025.48	-3510.79	40°32'20.348"N	104°46'20.950"W	2.46	
12674.00	88.950	269.770	7280.47	3699.77	-1027.15	-3605.75	40°32'20.331"N	104°46'22.180"W	1.65	
12769.00	88.950	270.820	7282.21	3794.07	-1026.66	-3700.73	40°32'20.336"N	104°46'23.410"W	1.11	
12863.00	89.970	272.110	7283.09	3887.14	-1024.26	-3794.70	40°32'20.360"N	104°46'24.627"W	1.75	
12958.00	89.820	272.140	7283.27	3981.04	-1020.74	-3889.63	40°32'20.394"N	104°46'25.857"W	0.16	
13053.00	89.940	273.230	7283.47	4074.80	-1016.29	-3984.52	40°32'20.438"N	104°46'27.086"W	1.15	
13148.00	90.370	271.290	7283.21	4168.66	-1012.54	-4079.45	40°32'20.475"N	104°46'28.315"W	2.09	
13243.00	90.150	270.540	7282.78	4262.85	-1011.02	-4174.43	40°32'20.490"N	104°46'29.545"W	0.82	
13337.00	90.340	270.910	7282.38	4356.08	-1009.83	-4268.42	40°32'20.501"N	104°46'30.763"W	0.44	
13432.00	90.310	270.260	7281.84	4450.34	-1008.86	-4363.42	40°32'20.511"N	104°46'31.993"W	0.68	
13527.00	90.280	269.310	7281.35	4544.75	-1009.22	-4458.41	40°32'20.507"N	104°46'33.224"W	1.00	
13622.00	90.370	269.450	7280.81	4639.23	-1010.25	-4553.41	40°32'20.497"N	104°46'34.454"W	0.18	
13717.00	90.280	269.000	7280.27	4733.74	-1011.53	-4648.40	40°32'20.484"N	104°46'35.684"W	0.48	
13811.00	90.400	272.420	7279.71	4826.96	-1010.37	-4742.37	40°32'20.495"N	104°46'36.901"W	3.64	
13906.00	90.090	273.120	7279.31	4920.70	-1005.78	-4837.26	40°32'20.540"N	104°46'38.130"W	0.81	
14000.00	90.250	272.220	7279.03	5013.47	-1001.40	-4931.16	40°32'20.583"N	104°46'39.347"W	0.97	
14095.00	90.250	270.610	7278.61	5107.54	-999.05	-5026.12	40°32'20.606"N	104°46'40.577"W	1.69	

# Actual Wellpath Report

G & D HANKS X-27-28HN AWP

Page 7 of 10

## REFERENCE WELLPATH IDENTIFICATION

Operator	BAYSWATER E & P LLC	Slot	SLOT#16 G & D HANKS X-27-28HN (1123'FSL & 1575'FEL,SEC.27)
Area	COLORADO	Well	G & D HANKS X-27-28HN
Field	WELD COUNTY (NAD83/TRUE NORTH)	Wellbore	G & D HANKS X-27-28HN AWP
Facility	SEC.27-T07N-R66W		

## WELLPATH DATA (196 stations)

MD [ft]	Inclination [°]	Azimuth [°]	TVD [ft]	Vert Sect [ft]	North [ft]	East [ft]	Latitude	Longitude	DLS [°/100ft]	Comments
14190.00	90.180	268.870	7278.26	5201.96	-999.48	-5121.12	40°32'20.602"N	104°46'41.807"W	1.83	
14285.00	90.180	268.390	7277.96	5296.57	-1001.76	-5216.09	40°32'20.579"N	104°46'43.037"W	0.51	
14379.00	90.490	269.680	7277.41	5390.11	-1003.34	-5310.07	40°32'20.564"N	104°46'44.254"W	1.41	
14474.00	90.370	269.790	7276.70	5484.53	-1003.78	-5405.07	40°32'20.559"N	104°46'45.485"W	0.17	
14568.00	90.120	269.190	7276.29	5578.00	-1004.62	-5499.06	40°32'20.551"N	104°46'46.702"W	0.69	
14662.00	90.090	266.860	7276.12	5671.69	-1007.85	-5593.00	40°32'20.518"N	104°46'47.919"W	2.48	
14757.00	90.030	265.410	7276.02	5766.58	-1014.26	-5687.78	40°32'20.455"N	104°46'49.146"W	1.53	
14852.00	89.780	264.220	7276.18	5861.55	-1022.84	-5782.39	40°32'20.370"N	104°46'50.372"W	1.28	
14946.00	90.250	266.500	7276.15	5955.49	-1030.45	-5876.08	40°32'20.294"N	104°46'51.585"W	2.48	
15041.00	90.400	272.890	7275.61	6049.87	-1030.95	-5971.03	40°32'20.289"N	104°46'52.815"W	6.73	
15136.00	90.120	273.360	7275.18	6143.51	-1025.77	-6065.88	40°32'20.340"N	104°46'54.044"W	0.58	
15230.00	90.310	270.920	7274.83	6236.41	-1022.26	-6159.81	40°32'20.375"N	104°46'55.260"W	2.60	
15324.00	90.150	270.710	7274.45	6329.63	-1020.93	-6253.80	40°32'20.388"N	104°46'56.478"W	0.28	
15419.00	90.250	270.230	7274.12	6423.91	-1020.15	-6348.80	40°32'20.395"N	104°46'57.708"W	0.52	
15514.00	89.850	269.420	7274.04	6518.31	-1020.44	-6443.79	40°32'20.392"N	104°46'58.938"W	0.95	
15609.00	89.850	268.870	7274.29	6612.84	-1021.85	-6538.78	40°32'20.378"N	104°47'00.169"W	0.58	
15704.00	89.880	268.220	7274.51	6707.45	-1024.27	-6633.75	40°32'20.354"N	104°47'01.399"W	0.68	
15798.00	89.420	267.030	7275.09	6801.20	-1028.16	-6727.67	40°32'20.315"N	104°47'02.615"W	1.36	
15893.00	89.600	266.660	7275.90	6896.02	-1033.39	-6822.52	40°32'20.263"N	104°47'03.844"W	0.43	
15987.00	89.420	265.890	7276.70	6989.90	-1039.50	-6916.32	40°32'20.202"N	104°47'05.058"W	0.84	
16082.00	89.170	266.360	7277.87	7084.79	-1045.92	-7011.09	40°32'20.139"N	104°47'06.286"W	0.56	
16177.00	89.320	267.130	7279.12	7179.62	-1051.31	-7105.93	40°32'20.085"N	104°47'07.514"W	0.83	
16271.00	89.290	267.620	7280.26	7273.39	-1055.62	-7199.82	40°32'20.042"N	104°47'08.730"W	0.52	
16365.00	89.450	269.450	7281.30	7367.00	-1058.02	-7293.78	40°32'20.018"N	104°47'09.947"W	1.95	
16460.00	89.260	270.210	7282.37	7461.40	-1058.30	-7388.78	40°32'20.015"N	104°47'11.178"W	0.82	
16554.00	89.290	269.860	7283.56	7554.76	-1058.24	-7482.77	40°32'20.015"N	104°47'12.395"W	0.37	
16649.00	89.720	269.380	7284.38	7649.20	-1058.87	-7577.76	40°32'20.009"N	104°47'13.625"W	0.68	
16743.00	89.570	270.300	7284.96	7742.61	-1059.14	-7671.76	40°32'20.006"N	104°47'14.843"W	0.99	
16837.00	89.780	270.890	7285.49	7835.87	-1058.16	-7765.75	40°32'20.015"N	104°47'16.060"W	0.67	
16931.00	89.570	271.740	7286.03	7928.98	-1056.00	-7859.73	40°32'20.036"N	104°47'17.277"W	0.93	



# Actual Wellpath Report

G & D HANKS X-27-28HN AWP

Page 8 of 10

## REFERENCE WELLPATH IDENTIFICATION

Operator	BAYSWATER E & P LLC	Slot	SLOT#16 G & D HANKS X-27-28HN (1123'FSL & 1575'FEL,SEC.27)
Area	COLORADO	Well	G & D HANKS X-27-28HN
Field	WELD COUNTY (NAD83/TRUE NORTH)	Wellbore	G & D HANKS X-27-28HN AWB
Facility	SEC.27-T07N-R66W		

## WELLPATH DATA (196 stations)

MD [ft]	Inclination [°]	Azimuth [°]	TVD [ft]	Vert Sect [ft]	North [ft]	East [ft]	Latitude	Longitude	DLS [°/100ft]	Comments
17026.00	89.820	271.600	7286.53	8022.99	-1053.23	-7954.68	40°32'20.063"N	104°47'18.507"W	0.30	
17120.00	89.600	271.000	7287.01	8116.10	-1051.10	-8048.66	40°32'20.084"N	104°47'19.724"W	0.68	
17214.00	89.690	270.340	7287.59	8209.34	-1050.00	-8142.65	40°32'20.095"N	104°47'20.942"W	0.71	
17309.00	89.750	269.680	7288.05	8303.71	-1049.99	-8237.65	40°32'20.095"N	104°47'22.172"W	0.70	
17403.00	89.720	269.540	7288.49	8397.16	-1050.62	-8331.64	40°32'20.088"N	104°47'23.390"W	0.15	
17498.00	89.780	268.630	7288.90	8491.70	-1052.14	-8426.63	40°32'20.073"N	104°47'24.620"W	0.96	
17593.00	89.910	268.770	7289.16	8586.29	-1054.30	-8521.61	40°32'20.051"N	104°47'25.850"W	0.20	
17687.00	90.250	267.480	7289.03	8679.97	-1057.37	-8615.55	40°32'20.020"N	104°47'27.067"W	1.42	
17782.00	89.850	267.580	7288.95	8774.73	-1061.47	-8710.46	40°32'19.980"N	104°47'28.296"W	0.43	
17877.00	89.690	267.780	7289.33	8869.46	-1065.31	-8805.39	40°32'19.941"N	104°47'29.526"W	0.27	
17972.00	90.000	268.430	7289.58	8964.14	-1068.45	-8900.33	40°32'19.910"N	104°47'30.755"W	0.76	
18067.00	89.750	269.050	7289.79	9058.73	-1070.54	-8995.31	40°32'19.889"N	104°47'31.985"W	0.70	
18161.00	89.880	269.820	7290.09	9152.21	-1071.47	-9089.30	40°32'19.879"N	104°47'33.203"W	0.83	
18256.00	89.820	269.530	7290.34	9246.65	-1072.01	-9184.30	40°32'19.874"N	104°47'34.433"W	0.31	
18327.00	89.880	270.710	7290.53	9317.16	-1071.86	-9255.30	40°32'19.875"N	104°47'35.353"W	1.66	LAST BHGE SURVEY (151'FSL & 31'FWL,SEC.28)
18352.00	89.880	270.710	7290.58	9341.96	-1071.55	-9280.30	40°32'19.878"N	104°47'35.677"W	0.00	PTB (152'FSL & 6'FWL,SEC.28)

## HOLE & CASING SECTIONS - Ref Wellbore: G & D HANKS X-27-28HN AWB Ref Wellpath: G & D HANKS X-27-28HN AWP

String/Diameter	Start MD [ft]	End MD [ft]	Interval [ft]	Start TVD [ft]	End TVD [ft]	Start N/S [ft]	Start E/W [ft]	End N/S [ft]	End E/W [ft]
9.625in Casing	25.00	1553.00	1528.00	25.00	1527.10	0.00	0.00	-112.21	192.11

# Actual Wellpath Report

G & D HANKS X-27-28HN AWP

Page 9 of 10

## REFERENCE WELLPATH IDENTIFICATION

Operator	BAYSWATER E & P LLC	Slot	SLOT#16 G & D HANKS X-27-28HN (1123'FSL & 1575'FEL,SEC.27)
Area	COLORADO	Well	G & D HANKS X-27-28HN
Field	WELD COUNTY (NAD83/TRUE NORTH)	Wellbore	G & D HANKS X-27-28HN AWB
Facility	SEC.27-T07N-R66W		

## TARGETS

Name	TVD [ft]	North [ft]	East [ft]	Grid East [US ft]	Grid North [US ft]	Latitude	Longitude	Shape
G & D HANKS X-27-28HN LP REV-2 (160'FSL & 470'FEL,SEC.27)	7281.00	-949.76	1111.23	3206823.57	1440136.97	40°32'21.098"N	104°45'21.085"W	point
G & D HANKS X-27-28HN WP1 REV-1 (-2380'SS @ 7200'FLP)	7281.00	-1029.25	-6126.81	3199586.67	1439997.07	40°32'20.306"N	104°46'54.833"W	point
G & D HANKS X-27-28HN BHL REV-2 (160'FSL & 5'FWL,SEC.28)	7291.00	-1063.89	-9280.71	3196433.27	1439936.11	40°32'19.954"N	104°47'35.682"W	point
SEC.27,28 (460'FSL,460'FEL,5'FWL) SEC.33,34 (460'FNL)	7500.00	104.92	0.28	3205703.88	1441182.31	40°32'31.520"N	104°45'35.474"W	polygon
T07N-R66W								
SEC.27-T07N-R66W	9999.00	104.92	0.28	3205703.88	1441182.31	40°32'31.520"N	104°45'35.474"W	polygon
SEC.28-T07N-R66W*	9999.00	104.92	0.28	3205703.88	1441182.31	40°32'31.520"N	104°45'35.474"W	polygon

## WELLPATH COMPOSITION - Ref Wellbore: G & D HANKS X-27-28HN AWB Ref Wellpath: G & D HANKS X-27-28HN AWP

Start MD [ft]	End MD [ft]	Positional Uncertainty Model	Log Name/Comment	Wellbore
25.00	1509.00	BHI NaviTrak (Standard)	13.5" SURFACE NAVITRAK (STANDARD) <210-1563>	G & D HANKS X-27-28HN AWB
1509.00	18327.00	BHI AutoTrak Curve (Short)	BHI AUTOTRAK CURVE (SHORT) <1605-18327>	G & D HANKS X-27-28HN AWB
18327.00	18352.00	Blind Drilling (std)	Projection to bit	G & D HANKS X-27-28HN AWB

# Actual Wellpath Report

G & D HANKS X-27-28HN AWP

Page 10 of 10

## REFERENCE WELLPATH IDENTIFICATION

Operator	BAYSWATER E & P LLC	Slot	SLOT#16 G & D HANKS X-27-28HN (1123'FSL & 1575'FEL,SEC.27)
Area	COLORADO	Well	G & D HANKS X-27-28HN
Field	WELD COUNTY (NAD83/TRUE NORTH)	Wellbore	G & D HANKS X-27-28HN AWP
Facility	SEC.27-T07N-R66W		

## WELLPATH COMMENTS

MD [ft]	Inclination [°]	Azimuth [°]	TVD [ft]	Comment
18327.00	89.880	270.710	7290.53	LAST BHGE SURVEY (151'FSL & 31'FWL,SEC.28)
18352.00	89.880	270.710	7290.58	PTB (152'FSL & 6'FWL,SEC.28)