

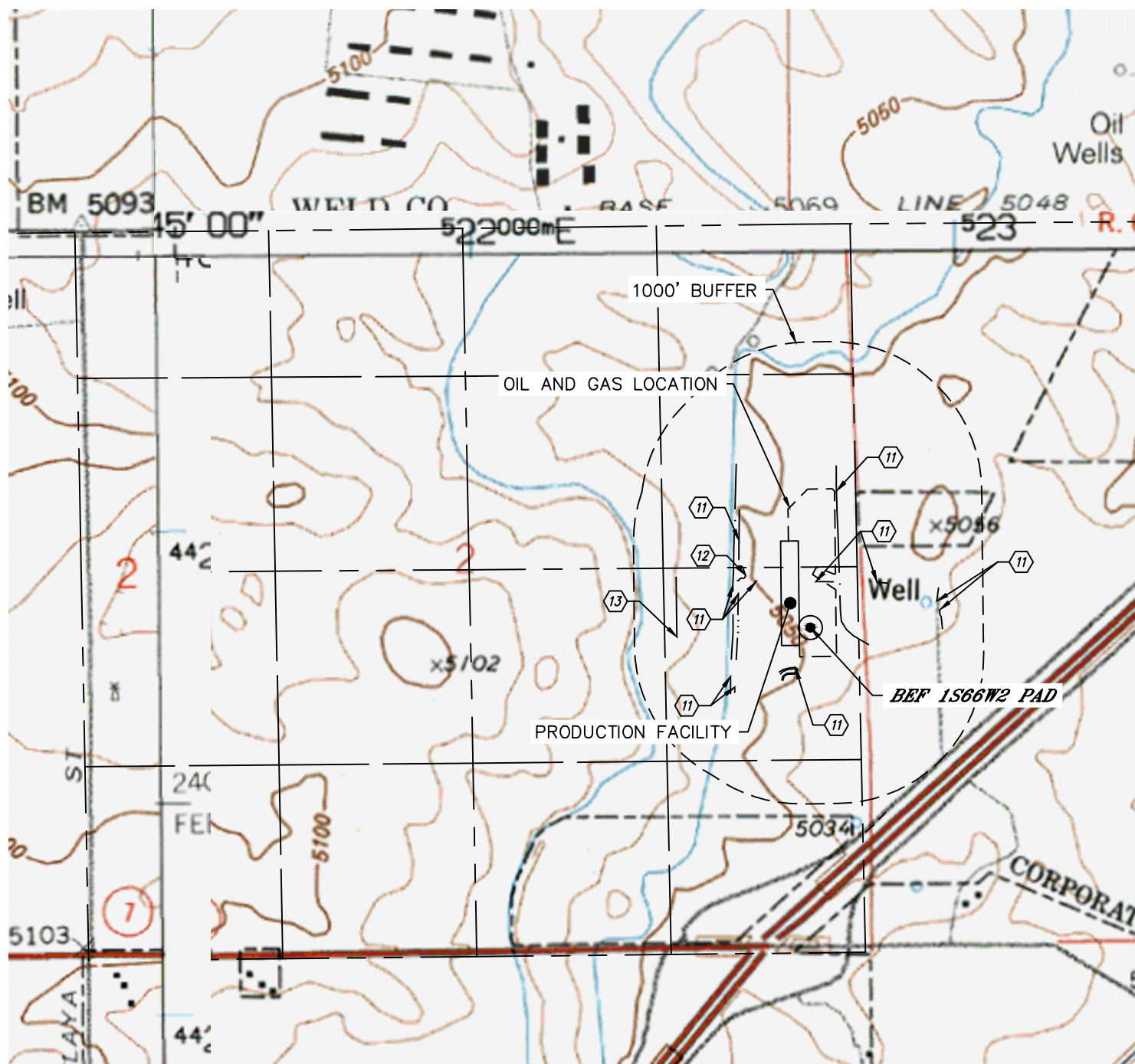


Lat40°, Inc. 6250 W. 10th Street, Unit 2, Greeley, CO 970-515-5294

HYDROLOGY MAP

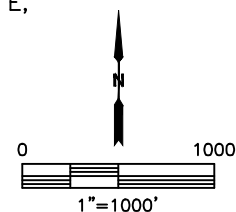
BEF 1S66W2 PAD

SECTION: 2
TOWNSHIP: 1S
RANGE: 66W
6TH. P.M.
ADAMS COUNTY, CO



DISTANCES MEASURED FROM THE EDGE OF THE OIL AND GAS LOCATION.

- ⑪ DITCH (1) INSIDE LOCATION, 78', 405' & 425' SW, 13', 687' & 705' E, 169', 291', 282' & 327' W, 285' NE
- ⑫ POND 241' W
- ⑬ CANAL 712' W



DATE: 4/27/2018
PROJECT#: 2017015