

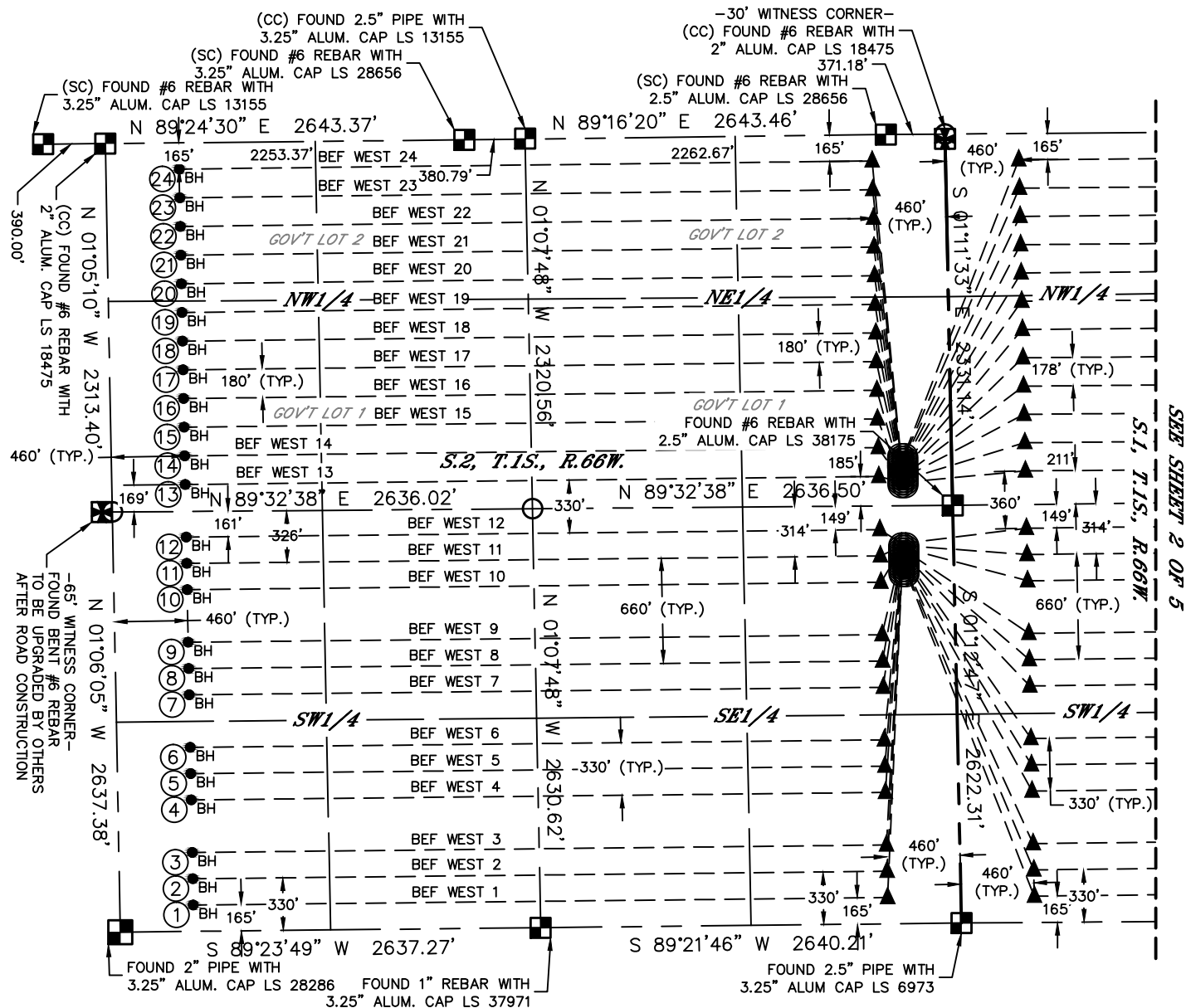
Lat40°, Inc. 6250 W. 10th Street, Unit 2, Greeley, CO 970-515-5294

## MULTI-WELL PLAN

BEF 1S66W2 PAD








THIS MAP DOES NOT REPRESENT A BOUNDARY SURVEY

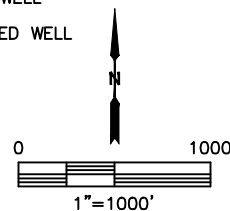
SECTION: 2  
TOWNSHIP: 1S  
RANGE: 66W  
6TH. P.M.  
ADAMS COUNTY, CO



SEE SHEET 4 OF 5 FOR TABLE

### LEGEND

-  = ALIQUOT MONUMENT AS DESCRIBED  
 = CALCULATED POSITION  
 = SURFACE HOLE LOCATION (SHL)  
 = ENTRY POINT LOCATION (EP)  
 = BOTTOM HOLE LOCATION (BHL)  
 = EXISTING WELL  
 = ABANDONED WELL





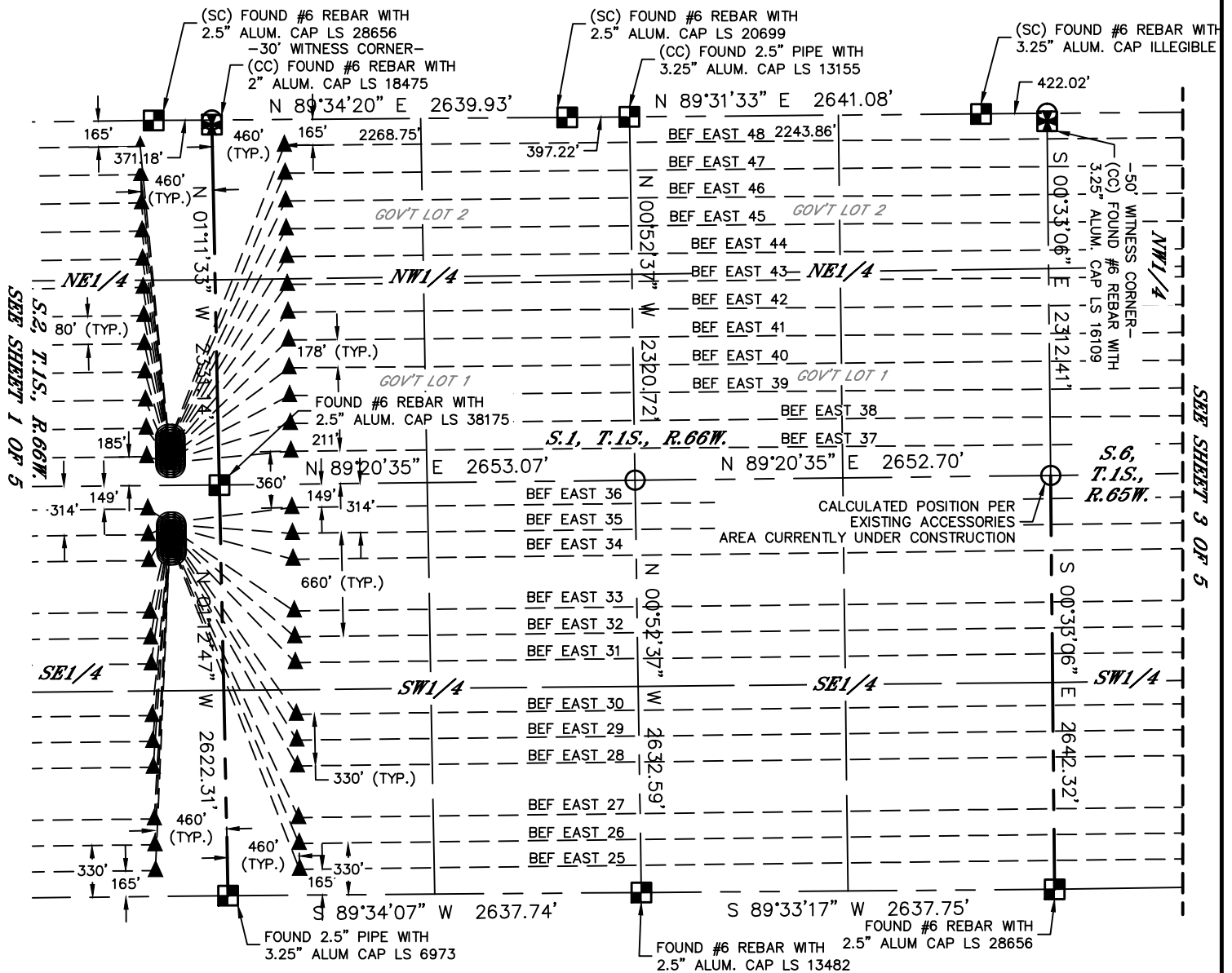
Lat40°, Inc. 6250 W. 10th Street, Unit 2, Greeley, CO 970-515-5294

# MULTI-WELL PLAN

BEF 1S66W2 PAD

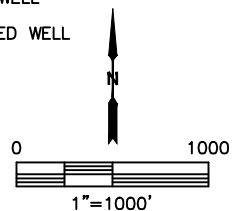
THIS MAP DOES NOT REPRESENT A BOUNDARY SURVEY

SECTION: 2  
TOWNSHIP: 1S  
RANGE: 66W  
6TH. P.M.  
ADAMS COUNTY, CO



SEE SHEET 4 OF 5 FOR TABLE

- LEGEND
- = ALIQUOT MONUMENT AS DESCRIBED
  - = CALCULATED POSITION
  - = SURFACE HOLE LOCATION (SHL)
  - ▲ = ENTRY POINT LOCATION (EP)
  - <sub>BH</sub> = BOTTOM HOLE LOCATION (BHL)
  - ⊙ = EXISTING WELL
  - ⊙ = ABANDONED WELL





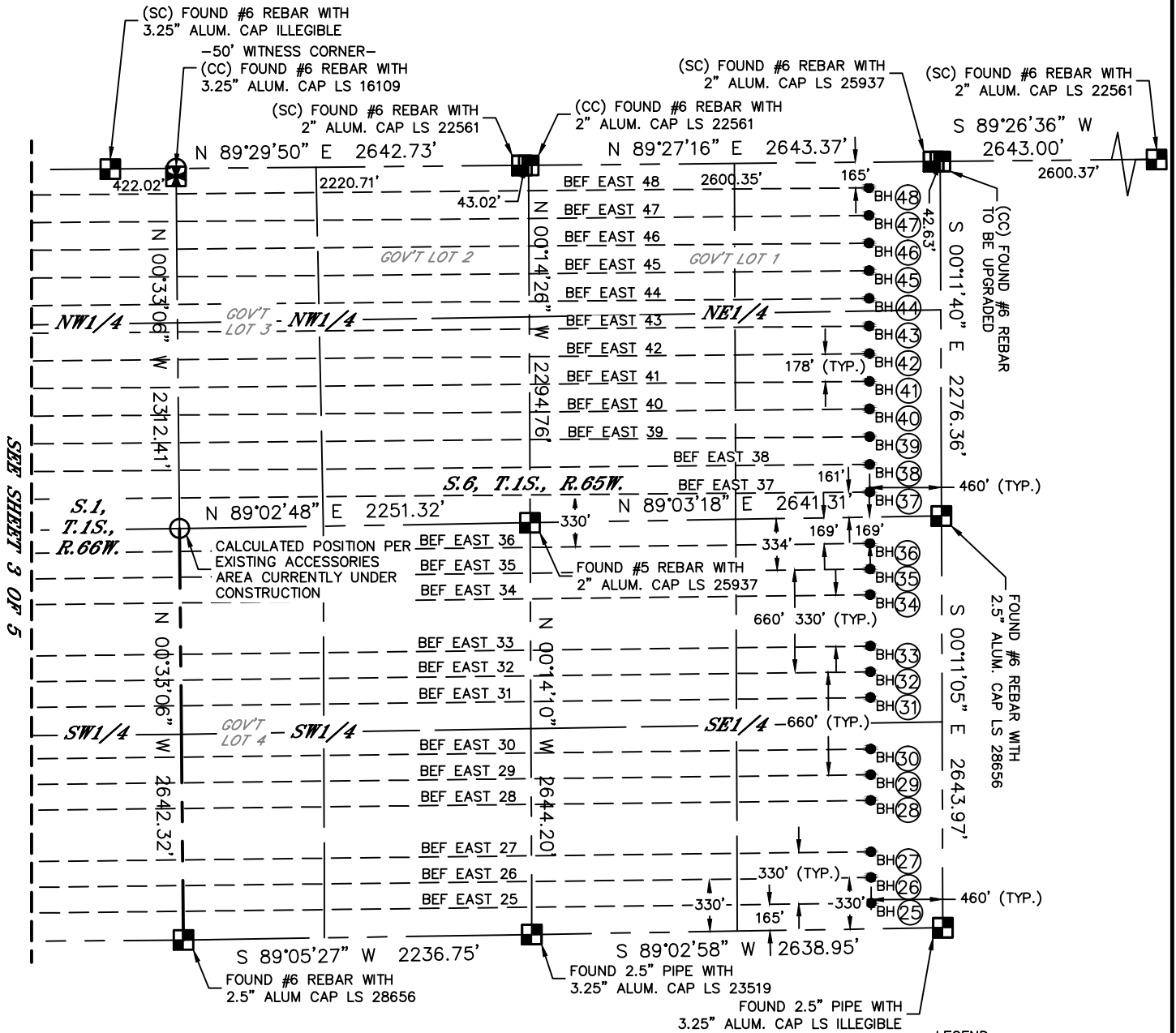
Lat40°, Inc. 6250 W. 10th Street, Unit 2, Greeley, CO 970-515-5294

# MULTI-WELL PLAN

BEF 1S66W2 PAD

THIS MAP DOES NOT REPRESENT A BOUNDARY SURVEY

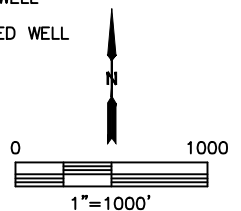
SECTION: 2  
TOWNSHIP: 1S  
RANGE: 66W  
6TH. P.M.  
ADAMS COUNTY, CO



## LEGEND

- = ALIQUOT MONUMENT AS DESCRIBED
- = CALCULATED POSITION
- = SURFACE HOLE LOCATION (SHL)
- ▲ = ENTRY POINT LOCATION (EP)
- = BOTTOM HOLE LOCATION (BHL)
- ⊙ = EXISTING WELL
- ⊙ = ABANDONED WELL

SEE SHEET 4 OF 5 FOR TABLE





Lat40°, Inc. 6250 W. 10th Street, Unit 2, Greeley, CO 970-515-5294

# MULTI-WELL PLAN

BEF 1S66W2 PAD

SECTION: 2  
TOWNSHIP: 1S  
RANGE: 66W  
6TH. P.M.  
ADAMS COUNTY, CO

#	WELL NAME	BHL FOOTAGE			BHL LAT °	BHL LONG °	BHL S-T-R	
1	BEF WEST 1	165	FSL	460	FWL	39.98736	-104.75062	2-1S-66
2	BEF WEST 2	330	FSL	460	FWL	39.98782	-104.75063	2-1S-66
3	BEF WEST 3	495	FSL	460	FWL	39.98827	-104.75063	2-1S-66
4	BEF WEST 4	825	FSL	460	FWL	39.98917	-104.75065	2-1S-66
5	BEF WEST 5	990	FSL	460	FWL	39.98963	-104.75065	2-1S-66
6	BEF WEST 6	1155	FSL	460	FWL	39.99008	-104.75066	2-1S-66
7	BEF WEST 7	1485	FSL	460	FWL	39.99099	-104.75067	2-1S-66
8	BEF WEST 8	1650	FSL	460	FWL	39.99144	-104.75068	2-1S-66
9	BEF WEST 9	1815	FSL	460	FWL	39.99189	-104.75068	2-1S-66
10	BEF WEST 10	2145	FSL	460	FWL	39.99280	-104.75070	2-1S-66
11	BEF WEST 11	2310	FSL	460	FWL	39.99325	-104.75070	2-1S-66
12	BEF WEST 12	2475	FSL	460	FWL	39.99370	-104.75071	2-1S-66
13	BEF WEST 13	2146	FNL	460	FWL	39.99461	-104.75072	2-1S-66
14	BEF WEST 14	1965	FNL	460	FWL	39.99510	-104.75073	2-1S-66
15	BEF WEST 15	1785	FNL	460	FWL	39.99560	-104.75074	2-1S-66
16	BEF WEST 16	1605	FNL	460	FWL	39.99609	-104.75074	2-1S-66
17	BEF WEST 17	1425	FNL	460	FWL	39.99658	-104.75075	2-1S-66
18	BEF WEST 18	1245	FNL	460	FWL	39.99708	-104.75076	2-1S-66
19	BEF WEST 19	1065	FNL	460	FWL	39.99757	-104.75076	2-1S-66
20	BEF WEST 20	885	FNL	460	FWL	39.99807	-104.75077	2-1S-66
21	BEF WEST 21	705	FNL	460	FWL	39.99856	-104.75078	2-1S-66
22	BEF WEST 22	525	FNL	460	FWL	39.99906	-104.75078	2-1S-66
23	BEF WEST 23	345	FNL	460	FWL	39.99955	-104.75079	2-1S-66
24	BEF WEST 24	165	FNL	460	FWL	40.00004	-104.75080	2-1S-66
25	BEF EAST 25	165	FSL	460	FEL	39.98747	-104.69885	6-1S-65
26	BEF EAST 26	330	FSL	460	FEL	39.98792	-104.69884	6-1S-65
27	BEF EAST 27	495	FSL	460	FEL	39.98837	-104.69884	6-1S-65
28	BEF EAST 28	825	FSL	460	FEL	39.98928	-104.69883	6-1S-65
29	BEF EAST 29	990	FSL	460	FEL	39.98973	-104.69883	6-1S-65
30	BEF EAST 30	1155	FSL	460	FEL	39.99018	-104.69883	6-1S-65
31	BEF EAST 31	1485	FSL	460	FEL	39.99109	-104.69882	6-1S-65
32	BEF EAST 32	1650	FSL	460	FEL	39.99154	-104.69882	6-1S-65
33	BEF EAST 33	1815	FSL	460	FEL	39.99199	-104.69881	6-1S-65
34	BEF EAST 34	2145	FSL	460	FEL	39.99290	-104.69881	6-1S-65
35	BEF EAST 35	2310	FSL	460	FEL	39.99335	-104.69880	6-1S-65
36	BEF EAST 36	2475	FSL	460	FEL	39.99381	-104.69880	6-1S-65
37	BEF EAST 37	2118	FNL	460	FEL	39.99471	-104.69879	6-1S-65
38	BEF EAST 38	1941	FNL	460	FEL	39.99520	-104.69879	6-1S-65
39	BEF EAST 39	1763	FNL	460	FEL	39.99569	-104.69879	6-1S-65
40	BEF EAST 40	1586	FNL	460	FEL	39.99617	-104.69878	6-1S-65
41	BEF EAST 41	1408	FNL	460	FEL	39.99666	-104.69878	6-1S-65
42	BEF EAST 42	1230	FNL	460	FEL	39.99715	-104.69878	6-1S-65
43	BEF EAST 43	1053	FNL	460	FEL	39.99764	-104.69877	6-1S-65
44	BEF EAST 44	875	FNL	460	FEL	39.99812	-104.69877	6-1S-65
45	BEF EAST 45	698	FNL	460	FEL	39.99861	-104.69876	6-1S-65
46	BEF EAST 46	520	FNL	460	FEL	39.99910	-104.69876	6-1S-65
47	BEF EAST 47	343	FNL	460	FEL	39.99959	-104.69876	6-1S-65
48	BEF EAST 48	165	FNL	460	FEL	40.00007	-104.69875	6-1S-65



Lat40°, Inc. 6250 W. 10th Street, Unit 2, Greeley, CO 970-515-5294

# MULTI-WELL PLAN

BEF 1S66W2 PAD

SECTION: 2  
TOWNSHIP: 1S  
RANGE: 66W  
6TH. P.M.  
ADAMS COUNTY, CO

