



Lat40°, Inc. 6250 W. 10th Street, Unit 2, Greeley, CO 970-515-5294

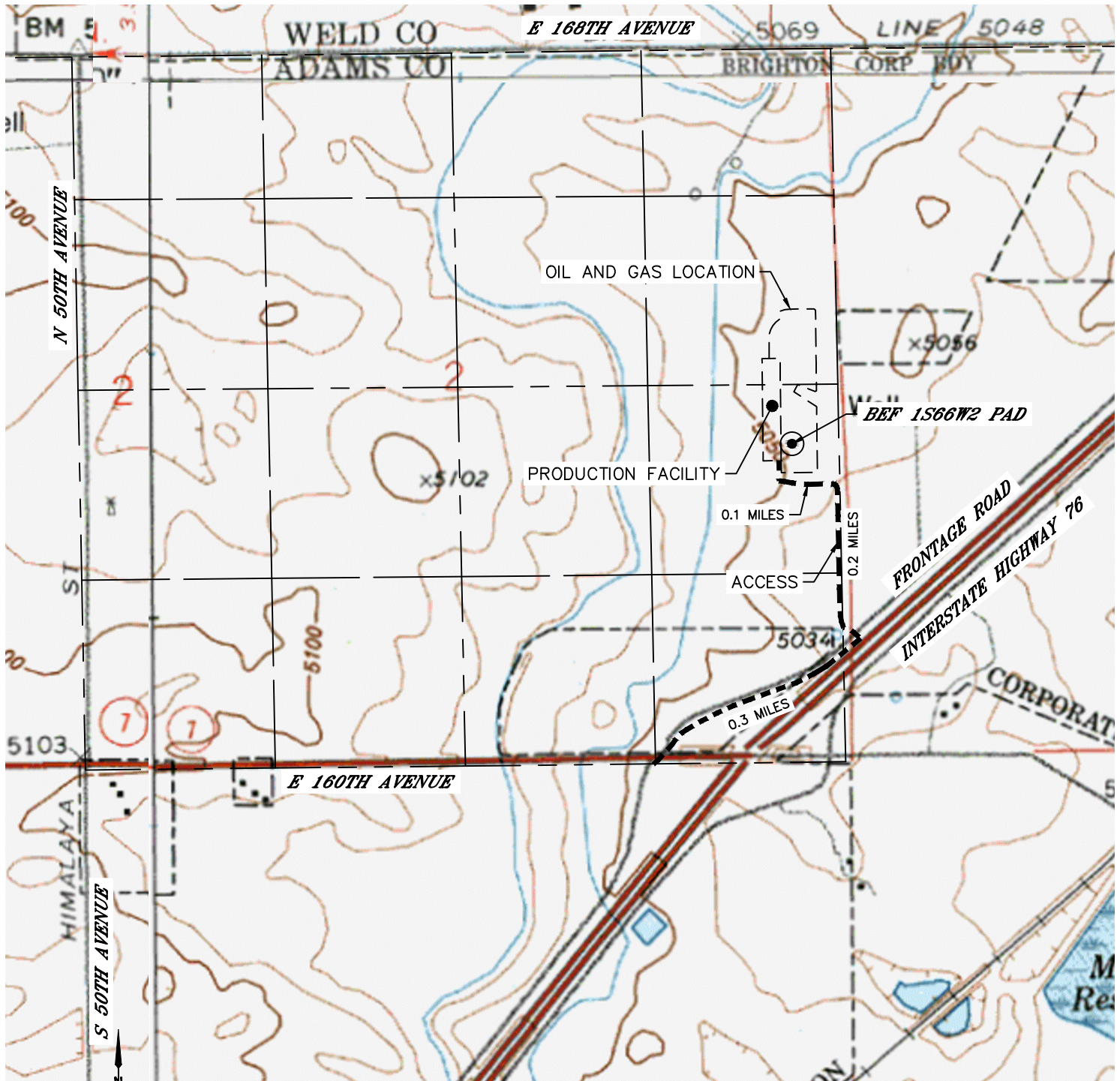
ACCESS ROAD MAP

BEF 1S66W2 PAD

SECTION: 2
TOWNSHIP: 1S
RANGE: 66W
6TH. P.M.
ADAMS COUNTY, CO

DRIVING DIRECTIONS TO BEF 1S66W2 PAD

FROM THE INTERSECTION OF 160TH AVENUE AND FRONTAGE ROAD, GO NORTHEAST ALONG FRONTAGE ROAD FOR 0.3 MILES TO AN EXISTING ACCESS TO THE NORTHWEST. THEN GO NORTH ON THE PROPOSED ACCESS FOR 0.2 MILES THEN GO WEST AND THEN NORTH FOR 0.1 MILES TO THE PROPOSED WELL PAD AND PRODUCTION FACILITY.



0 1000
1"=1000'



Lat40°, Inc. 6250 W. 10th Street, Unit 2, Greeley, CO 970-515-5294

ACCESS ROAD MAP

BEF 1S66W2 PAD

SECTION: 2
TOWNSHIP: 1S
RANGE: 66W
6TH. P.M.
ADAMS COUNTY, CO

