



Well: Emerald 13ST
(1823)
Field: Rangley, Co.

Survey Data

Run No.41

Survey Type: T-S-T
Date: 03/08/2018
Metered Rate: 4200 mcf/d
Measured Rate: 1332 B/D
Desired Rate: N/A
Service Co: PLS
Surface Temp: 92.4 °F
BHT: 144.2 °F
TBG Pressure: 1920 PSI
CSG Pressure: 0 PSI
Pick Up: 6447' TDL
Inj. Fluid: CO₂

Remarks

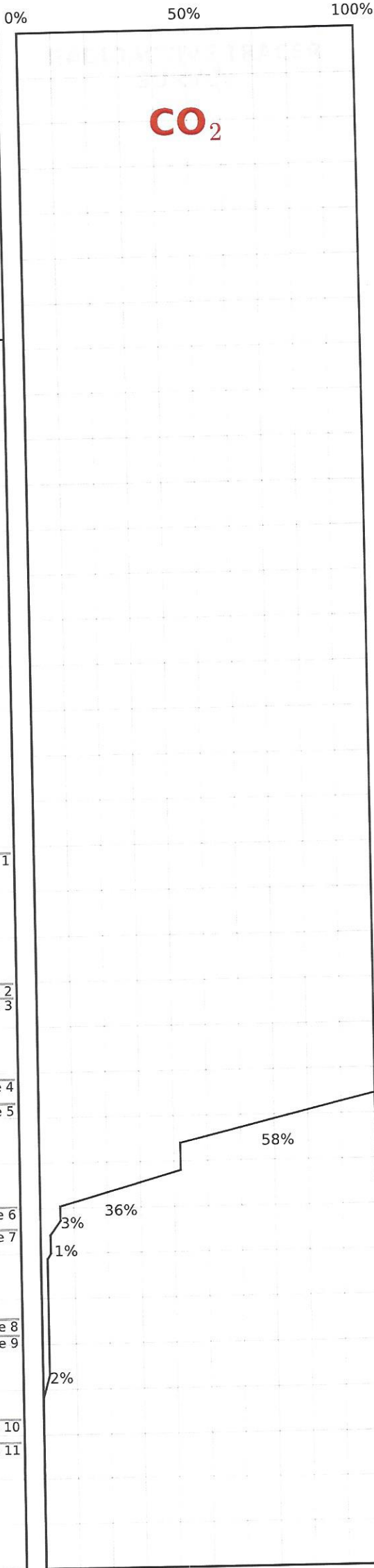
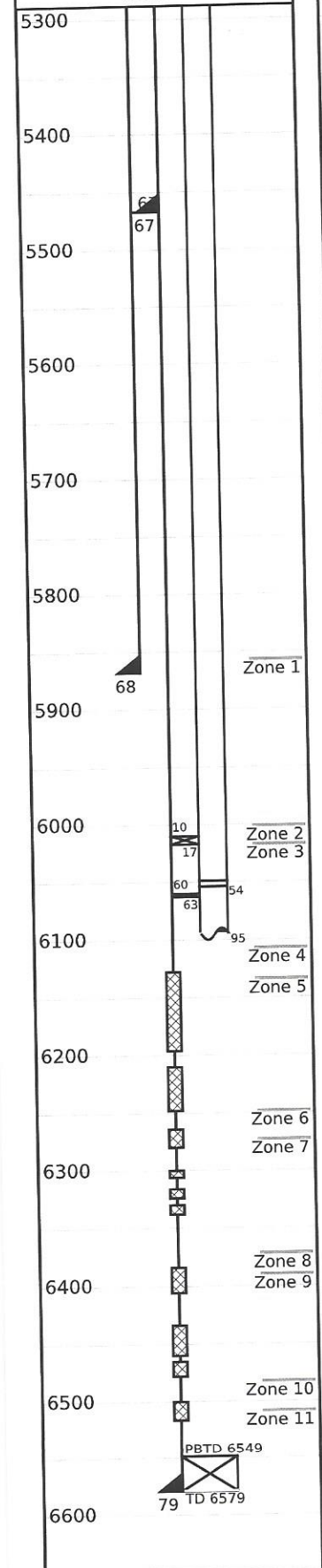
R/A Tra indicates top perf and packers O.K.

Recorded By: J.R. Hacking

Mechanical Information

7" 23# Casing 0'-5868'
5-1/2" 17# Liner 0'-5467'
5" 18# Liner 5467'-6579'
P.B.T.D 6549'
2-7/8" Tubing 0'-5369'
X-Over 5369'-5369'
2-3/8" Tubing 5369'-6010'
Top Packer 6010'-6017'
2-3/8" Tubing Joint 6017'-6049'
"1.81" "F" On/Off Tool 6049'-6054'
2-3/8" PUP 6054'-6057'
2-3/8" PUP 6057'-6060'
Packer 6060'-6063'
2-3/8" Tubing Joint 6063'-6095'
Wireline Entry Guide 6095'-6095'
L-09

API No. 051030563600



(%) Injected Into Zone

Zone 1
5857-6014

Zone 2
6014-6017

Zone 3
6017-6107

Zone 4
6107-6134

Zone 5
6134-6261

Zone 6
6261-6273

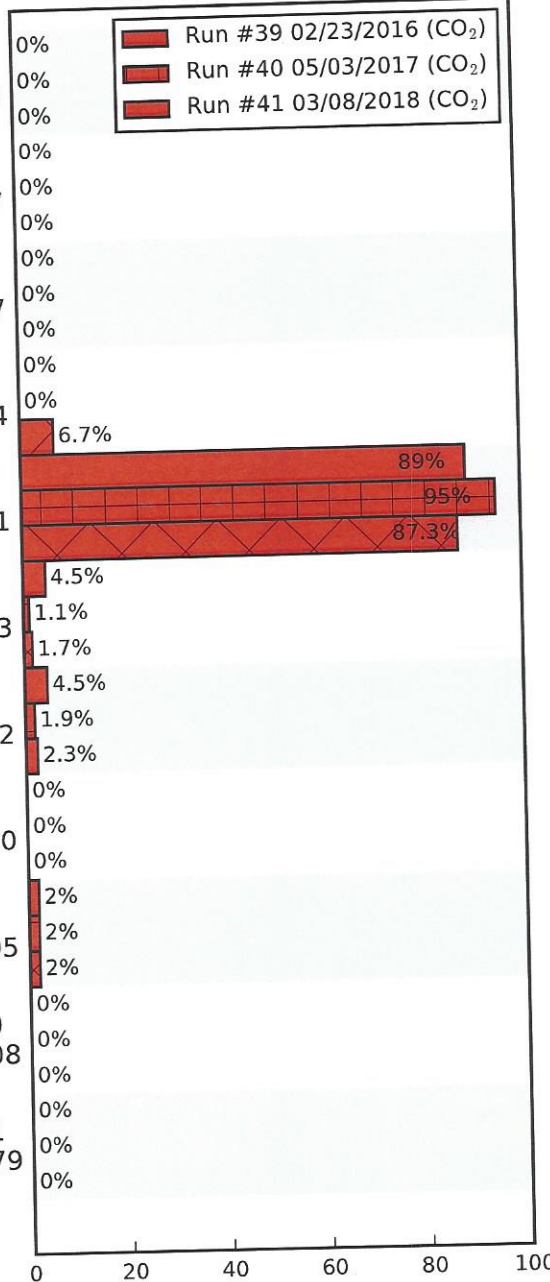
Zone 7
6273-6372

Zone 8
6372-6390

Zone 9
6390-6495

Zone 10
6495-6508

Zone 11
6508-6579



Average Temperature (°F)

	Run #39 02/23/2016	Run #40 05/03/2017	Run #41 03/08/2018
Surface	85.8	90.9	92.4
5857-6014	--	--	--
6014-6017	--	--	--
6017-6107	--	--	--
6107-6134	--	--	--
6134-6261	--	--	--
6261-6273	--	--	--
6273-6372	--	--	--
6372-6390	--	--	--
6390-6495	--	--	--
TDL (6447)	157.8	153.7	144.2
6495-6508	--	--	--
6508-6579	--	--	--
Rate (B/D)	1560	2168	1332
Press (PSI)	1900	2030	1920