

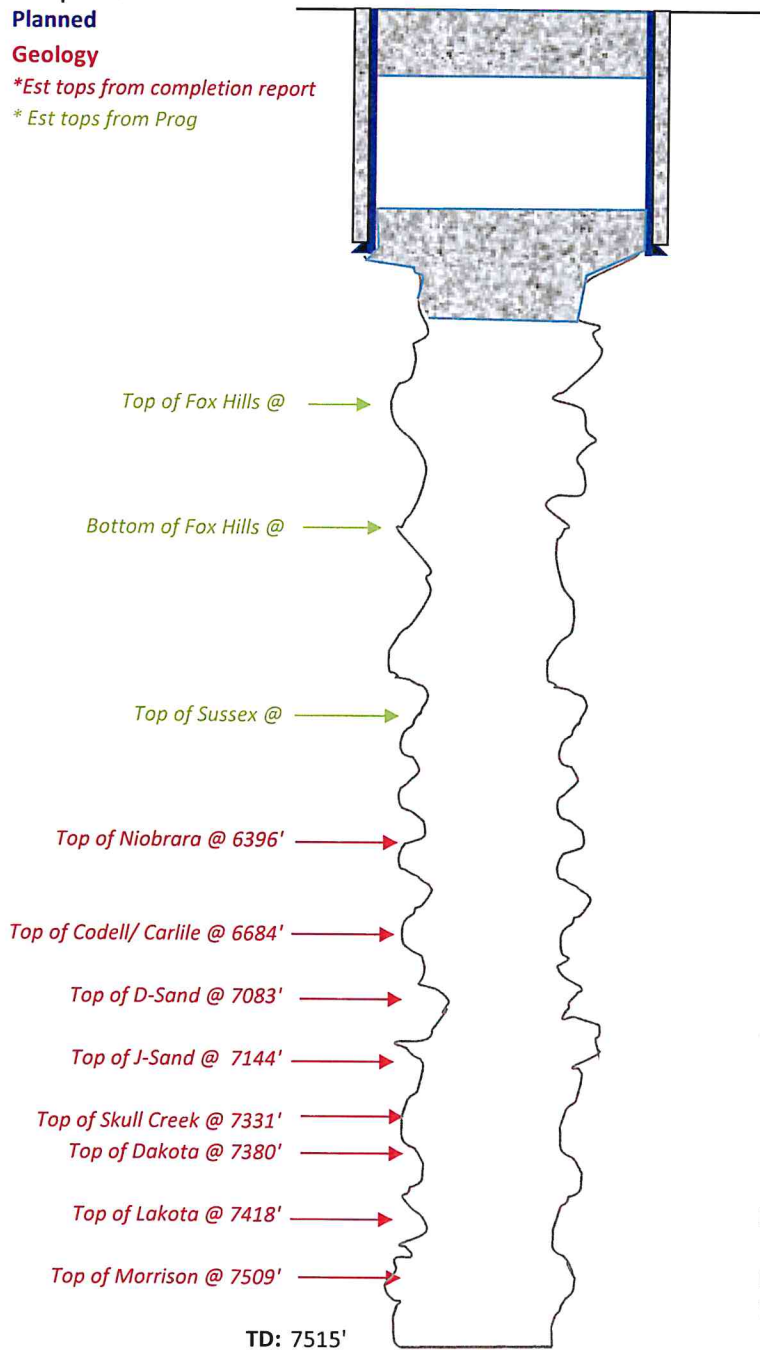
Kissinger Petroleum Corp
UPRR 13-15
EXISTING WELLBORE DIAGRAM

Completed
Planned

Geology

**Est tops from completion report*

**Est tops from Prog*



Elevation: 4763' GL, 4771' KB

Location: 652' FSL, 663' FWL

SWSW Sec 15, T4N, R63W

Weld County, CO

Field: Wattenberg

Zone: J-Sand, Lakota, Morrison

Spud Date: 11/14/1977

API: 05-123-09341

Surface Casing:

8-5/8", 24# set @ 178' in 12-1/4" OH

Cement w/ 140 sx

P&A: 11/27/1977

10 sack plug @ 30' to surface

80 sack plug @ 390' - 150'

J Sand: DST - Recovered 10' mud, strong blow

Lakota DST: Weak blow, 3' mud recovered

Production Casing:

7-7/8" Open Hole

Kissinger Petroleum Corp

UPRR 13-15

PLANNED WELLBORE DIAGRAM

Completed

Planned

Geology

**Est tops from completion report*

**Est tops from Prog*

