

Crestone Peak Resources

DJ BASIN

S21-T2N-R68W

DREAM WEAVER South 3B-21H-N268

OH

PLAN #1

Anticollision Summary Report

17 April, 2018

Cathedral Energy Services

Anticollision Summary Report

Company:	Crestone Peak Resources	Local Co-ordinate Reference:	Well DREAM WEAVER South 3B-21H-N268 - Slot DREAM WEAVER South 3B-21H-N268 SHL
Project:	DJ BASIN	TVD Reference:	23' KB @ 4924.00usft (Original Well Elev)
Reference Site:	S21-T2N-R68W	MD Reference:	23' KB @ 4924.00usft (Original Well Elev)
Site Error:	0.00 usft	North Reference:	True
Reference Well:	DREAM WEAVER South 3B-21H-N268	Survey Calculation Method:	Minimum Curvature
Well Error:	0.00 usft	Output errors are at	2.00 sigma
Reference Wellbore	OH	Database:	USA EDM 5000 Multi Users DB
Reference Design:	PLAN #1	Offset TVD Reference:	Offset Datum

Reference	PLAN #1		
Filter type:	NO GLOBAL FILTER: Using user defined selection & filtering criteria		
Interpolation Method:	MD Interval 100.00usft	Error Model:	ISCWSA
Depth Range:	Unlimited	Scan Method:	Closest Approach 3D
Results Limited by:	Maximum center-center distance of 2,237.05 usft	Error Surface:	Pedal Curve
Warning Levels Evaluated at:	2.00 Sigma	Casing Method:	Not applied

Survey Tool Program	Date	3/22/2018		
From (usft)	To (usft)	Survey (Wellbore)	Tool Name	Description
0.00	1,100.00	PLAN #1 (OH)	VESSI_GYROFLEX	VESSI Gyroflex Gyro
2,001.00	19,364.34	PLAN #1 (OH)	MWD+HDGM	OWSG MWD + HDGM

Summary						
Site Name	Reference Measured Depth (usft)	Offset Measured Depth (usft)	Distance Between Centres (usft)	Distance Between Ellipses (usft)	Separation Factor	Warning
S21-T2N-R68W						
DREAM WEAVER North 3A-21H-N268 - OH - PLAN #1	708.79	686.70	115.65	113.32	49.741	CC, ES
DREAM WEAVER North 3A-21H-N268 - OH - PLAN #1	7,798.42	8,406.20	318.17	269.79	6.575	SF
DREAM WEAVER North 3B-21H-N268 - OH - PLAN #1	754.08	738.58	81.78	79.30	32.994	CC
DREAM WEAVER North 3B-21H-N268 - OH - PLAN #1	8,308.33	7,988.91	98.43	50.11	2.037	ES, SF
DREAM WEAVER North 3C-21H-N268 - OH - PLAN #1	7,526.20	8,430.16	48.84	-0.11	0.998	Level 1, CC, ES, SF
DREAM WEAVER North 3D-21H-N268 - OH - PLAN #1	784.67	773.28	45.83	43.25	17.782	CC, ES
DREAM WEAVER North 3D-21H-N268 - OH - PLAN #1	7,590.02	8,445.06	310.57	262.46	6.456	SF
DREAM WEAVER North 3E-21H-N268 - OH - PLAN #1	775.27	765.61	34.67	32.13	13.639	CC, ES
DREAM WEAVER North 3E-21H-N268 - OH - PLAN #1	7,378.89	8,447.58	596.19	547.46	12.235	SF
DREAM WEAVER North 3F-21H-N268 - OH - PLAN #1	748.52	740.60	28.64	26.19	11.696	CC, ES
DREAM WEAVER North 3F-21H-N268 - OH - PLAN #1	800.00	790.39	30.66	28.02	11.609	SF
DREAM WEAVER North 3G-21H-N268 - OH - PLAN #1	686.93	680.72	26.20	23.97	11.769	CC, ES
DREAM WEAVER North 3G-21H-N268 - OH - PLAN #1	700.00	706.50	26.31	24.02	11.449	SF
DREAM WEAVER North 3H-21H-N268 - OH - PLAN #1	621.59	616.93	22.79	20.80	11.468	CC, ES, SF
DREAM WEAVER North 3I-21H-N268 - OH - PLAN #1	497.02	495.88	14.75	13.21	9.541	CC, ES
DREAM WEAVER North 3I-21H-N268 - OH - PLAN #1	500.00	498.74	14.77	13.22	9.491	SF
DREAM WEAVER North 3J-21H-N268 - OH - PLAN #1	450.37	449.54	12.29	10.92	8.935	CC, ES, SF
DREAM WEAVER North 3K-21H-N268 - OH - PLAN #1	377.74	377.36	10.65	9.54	9.555	CC, ES, SF
DREAM WEAVER South 3A-21H-N268 - OH - PLAN #1	600.00	597.39	11.93	9.91	5.902	CC, ES
DREAM WEAVER South 3A-21H-N268 - OH - PLAN #1	19,364.34	19,287.83	441.75	76.99	1.211	Level 2, SF
DREAM WEAVER South 3C-21H-N268 - OH - PLAN #1	100.00	100.00	12.14	12.01	89.089	CC
DREAM WEAVER South 3C-21H-N268 - OH - PLAN #1	200.00	200.27	12.19	11.70	24.581	ES
DREAM WEAVER South 3C-21H-N268 - OH - PLAN #1	19,364.34	19,094.47	255.81	15.62	1.065	Level 2, SF
DREAM WEAVER South 3D-21H-N268 - OH - PLAN #1	100.00	100.00	24.29	24.15	178.176	CC
DREAM WEAVER South 3D-21H-N268 - OH - PLAN #1	19,364.34	19,150.03	267.70	-64.48	0.806	Level 1, ES, SF
DREAM WEAVER South 3E-21H-N268 - OH - PLAN #1	100.00	100.00	36.43	36.29	267.268	CC, ES
DREAM WEAVER South 3E-21H-N268 - OH - PLAN #1	19,364.34	19,007.75	605.62	255.30	1.729	SF
DREAM WEAVER South 3F-21H-N268 - OH - PLAN #1	100.00	100.00	48.57	48.44	356.355	CC, ES
DREAM WEAVER South 3F-21H-N268 - OH - PLAN #1	19,364.34	19,222.70	759.87	385.49	2.030	SF
DREAM WEAVER South 3G-21H-N268 - OH - PLAN #1	100.00	100.00	60.71	60.58	445.445	CC
DREAM WEAVER South 3G-21H-N268 - OH - PLAN #1	100.03	100.03	60.71	60.58	445.040	ES
DREAM WEAVER South 3G-21H-N268 - OH - PLAN #1	19,364.34	19,085.70	954.72	584.29	2.577	SF
DREAM WEAVER South 3H-21H-N268 - OH - PLAN #1	100.00	100.00	72.86	72.72	534.534	CC
DREAM WEAVER South 3H-21H-N268 - OH - PLAN #1	100.03	100.03	72.86	72.72	534.172	ES

CC - Min centre to center distance or convergent point, SF - min separation factor, ES - min ellipse separation

Cathedral Energy Services

Anticollision Summary Report

Company:	Crestone Peak Resources	Local Co-ordinate Reference:	Well DREAM WEAVER South 3B-21H-N268 - Slot DREAM WEAVER South 3B-21H-N268 SHL
Project:	DJ BASIN	TVD Reference:	23' KB @ 4924.00usft (Original Well Elev)
Reference Site:	S21-T2N-R68W	MD Reference:	23' KB @ 4924.00usft (Original Well Elev)
Site Error:	0.00 usft	North Reference:	True
Reference Well:	DREAM WEAVER South 3B-21H-N268	Survey Calculation Method:	Minimum Curvature
Well Error:	0.00 usft	Output errors are at	2.00 sigma
Reference Wellbore	OH	Database:	USA EDM 5000 Multi Users DB
Reference Design:	PLAN #1	Offset TVD Reference:	Offset Datum

Summary						
Site Name Offset Well - Wellbore - Design	Reference Measured Depth (usft)	Offset Measured Depth (usft)	Distance Between Centres (usft)	Distance Between Ellipses (usft)	Separation Factor	Warning
S21-T2N-R68W						
DREAM WEAVER South 3H-21H-N268 - OH - PLAN #1	19,200.00	18,765.22	1,145.96	786.26	3.186	SF
DREAM WEAVER South 3I-21H-N268 - OH - PLAN #1	100.00	101.00	85.00	84.86	615.626	CC
DREAM WEAVER South 3I-21H-N268 - OH - PLAN #1	100.02	101.02	85.00	84.86	615.315	ES
DREAM WEAVER South 3I-21H-N268 - OH - PLAN #1	19,364.34	19,090.51	1,560.53	1,188.36	4.193	SF
DREAM WEAVER South 3J-21H-N268 - OH - PLAN #1	100.00	101.00	97.14	97.00	703.577	CC
DREAM WEAVER South 3J-21H-N268 - OH - PLAN #1	100.01	101.01	97.14	97.00	703.309	ES
DREAM WEAVER South 3J-21H-N268 - OH - PLAN #1	19,364.34	19,237.30	1,729.65	1,356.18	4.631	SF
DREAM WEAVER South 3K-21H-N268 - OH - PLAN #1	100.00	101.00	109.29	109.15	791.515	CC, ES
DREAM WEAVER South 3K-21H-N268 - OH - PLAN #1	19,364.34	19,076.22	1,893.77	1,523.02	5.108	SF

Cathedral Energy Services

Anticollision Summary Report

Company:	Crestone Peak Resources	Local Co-ordinate Reference:	Well DREAM WEAVER South 3B-21H-N268 - Slot DREAM WEAVER South 3B-21H-N268 SHL
Project:	DJ BASIN	TVD Reference:	23' KB @ 4924.00usft (Original Well Elev)
Reference Site:	S21-T2N-R68W	MD Reference:	23' KB @ 4924.00usft (Original Well Elev)
Site Error:	0.00 usft	North Reference:	True
Reference Well:	DREAM WEAVER South 3B-21H-N268	Survey Calculation Method:	Minimum Curvature
Well Error:	0.00 usft	Output errors are at	2.00 sigma
Reference Wellbore	OH	Database:	USA EDM 5000 Multi Users DB
Reference Design:	PLAN #1	Offset TVD Reference:	Offset Datum

Summary						
Site Name Offset Well - Wellbore - Design	Reference Measured Depth (usft)	Offset Measured Depth (usft)	Distance Between Centres (usft)	Distance Between Ellipses (usft)	Separation Factor	Warning
S21-T2N-R68W (OFFSETS)						
ARTHUR STROMQUIST 2 - KMG WELL - GYRO	7,006.20	6,778.39	1,605.44	1,569.11	44.190	CC, ES
ARTHUR STROMQUIST 2 - KMG WELL - GYRO	7,200.00	6,961.98	1,632.02	1,594.43	43.417	SF
BLISS 41-21 - KPK WELL - SURVEYS						Out of range
BOULDER CREEK 9-4K8 - SNYDER OIL - NO SURVEY						Out of range
BROWN C UNIT 1 - CPR WELL - GYRO						Out of range
CANINO 1 - HUGHES C W-SOTEXCO 1 - NO SURVEY						Out of range
CHAMPLIN 41-4/1-68/ 1 - KMG WELL - NO SURVEYS						Out of range
CHAMPLIN 86 AMOCO B 2 - KPK WELL - NO SURVEY						Out of range
CHAMPLIN 86 AMOCO UT/Q 1 - KMG WELL - GYRO						Out of range
CHAMPLIN 86 AMOCO-B 1 - KPK WELL - NO SURVEY						Out of range
CHAMPLIN 86 AMOCO-B 3 - KPK WELL - NO SURVEY						Out of range
CHAMPLIN 86 AMOCO-B 4 - KPK WELL - NO SURVEY						Out of range
CHAMPLIN 86 AMOCO-B 5 - KPK WELL - NO SURVEY						Out of range
CHAMPLIN 86 AMOCO-B 6 - KPK WELL - NO SURVEY						Out of range
CHAMPLIN 86 AMOCO-F 5 - KPK WELL - NO SURVEY						Out of range
CHAMPLIN 86 AMOCO-O 9 - KMG WELL - GYRO	19,364.34	7,675.26	1,854.62	1,779.52	24.697	CC, ES, SF
CHAMPLIN32-4/1-68/ 2 - KMG WELL - NO SURVEYS						Out of range
CHMPLN 86 AMOCO-F 1 - KPK WELL - NO SURVEYS						Out of range
COLCLASURE 42-21 - KPK WELL - NO SURVEYS						Out of range
COOLEY 11-16 - KMG WELL - SURVEYS						Out of range
COOLEY 12-16 - KMG WELL - SURVEYS						Out of range
COOLEY 13-16 - KMG WELL - SURVEYS						Out of range
COOLEY 14-16 - KMG WELL - SURVEYS						Out of range
COOLEY 22-16 - KMG WELL - SURVEYS						Out of range
COOLEY 23-16 - KMG WELL - SURVEYS						Out of range
COOLEY 35-16 - KMG WELL - SURVEYS						Out of range
COPPER 31-15 - KMG WELL - SURVEYS						Out of range
CPC 31-4 (1-68) 3 - ANADARKO WELL - NO SURVEYS						Out of range
CPC 42-4 (1-68) 4 - ANADARKO WELL - NO SURVEYS						Out of range
DOMENICO 1 - NOBLE WELL - GYRO						Out of range
DUCKWORTH 31-16 - CPR WELL - GYRO						Out of range
DUCKWORTH 32-16 - CPR WELL - SURVEYS						Out of range
DUCKWORTH 33-16 - CPR WELL - SURVEYS						Out of range
DUCKWORTH 41-16 - CPR WELL - SURVEYS						Out of range
DUCKWORTH 43-16 - CPR WELL - GYRO						Out of range
DUCKWORTH 44-16 - CPR WELL - SURVEYS						Out of range
DUCKWORTH 6-0-16 - CPR WELL - SURVEYS						Out of range
DUCKWORTH B UNIT 1 - CPR WELL - GYRO						Out of range
DUCKWORTH B UNIT 2 - CPR WELL - GYRO						Out of range
EAST RINN 0-4-15 - CPR WELL - SURVEYS						Out of range
EAST RINN 13-15 - CPR WELL - SURVEYS						Out of range
EDITH ANN 1 - CPR WELL - GYRO						Out of range
EDITH ANN 33-21 - CPR WELL - GYRO	846.50	837.25	1,662.70	1,659.90	592.839	CC, ES
EDITH ANN 33-21 - CPR WELL - GYRO	4,800.00	4,663.69	2,219.01	2,198.36	107.481	SF
EDITH ANN 34-21 - CPR WELL - GYRO	0.00	0.00	1,357.56			
EDITH ANN 34-21 - CPR WELL - GYRO	200.00	195.72	1,357.84	1,357.35	2,780.322	ES
EDITH ANN 34-21 - CPR WELL - GYRO	4,900.00	4,814.88	2,224.78	2,204.70	110.782	SF
EDITH ANN 4-21 - CPR WELL - SURVEYS						Out of range
EDITH ANN 44-21 - CPR WELL - GYRO						Out of range
EDITH ANN 6-8-21 - CPR WELL - SURVEYS						Out of range
EDITH ANN 8-8-21 - CPR WELL - SURVEYS						Out of range

CC - Min centre to center distance or convergent point, SF - min separation factor, ES - min ellipse separation

Cathedral Energy Services

Anticollision Summary Report

Company:	Crestone Peak Resources	Local Co-ordinate Reference:	Well DREAM WEAVER South 3B-21H-N268 - Slot DREAM WEAVER South 3B-21H-N268 SHL
Project:	DJ BASIN	TVD Reference:	23' KB @ 4924.00usft (Original Well Elev)
Reference Site:	S21-T2N-R68W	MD Reference:	23' KB @ 4924.00usft (Original Well Elev)
Site Error:	0.00 usft	North Reference:	True
Reference Well:	DREAM WEAVER South 3B-21H-N268	Survey Calculation Method:	Minimum Curvature
Well Error:	0.00 usft	Output errors are at	2.00 sigma
Reference Wellbore	OH	Database:	USA EDM 5000 Multi Users DB
Reference Design:	PLAN #1	Offset TVD Reference:	Offset Datum

Summary						
Site Name Offset Well - Wellbore - Design	Reference Measured Depth (usft)	Offset Measured Depth (usft)	Distance Between Centres (usft)	Distance Between Ellipses (usft)	Separation Factor	Warning
S21-T2N-R68W (OFFSETS)						
EDITH ANN-DUCKWORTH 4A-21H-O268 - CPR - FINAL	471.91	690.41	2,185.36	2,183.45	1,147.260	CC
EDITH ANN-DUCKWORTH 4A-21H-O268 - CPR - FINAL	500.00	724.25	2,185.44	2,183.42	1,082.782	ES
EDITH ANN-DUCKWORTH 4A-21H-O268 - CPR - FINAL	1,400.00	1,716.95	2,231.72	2,226.00	390.187	SF
EDITH ANN-DUCKWORTH 4B-21H-O268 - CPR - FINAL	110.41	143.90	2,202.54	2,202.24	7,493.576	CC
EDITH ANN-DUCKWORTH 4B-21H-O268 - CPR - FINAL	328.05	466.18	2,203.17	2,201.93	1,776.820	ES
EDITH ANN-DUCKWORTH 4B-21H-O268 - CPR - FINAL	900.00	1,169.46	2,229.83	2,226.24	622.232	SF
EDITH ANN-DUCKWORTH 4C-21H-O268 - CPR - FINA	204.90	267.11	2,212.95	2,212.28	3,304.248	CC, ES
EDITH ANN-DUCKWORTH 4C-21H-O268 - CPR - FINA	600.00	683.87	2,231.25	2,229.12	1,047.746	SF
EDITH ANN-DUCKWORTH 4D-21H-O268 - CPR - FINA	0.00	28.65	2,225.26			
EDITH ANN-DUCKWORTH 4D-21H-O268 - CPR - FINA	400.00	431.64	2,234.18	2,232.87	1,704.201	SF
EDITH ANN-DUCKWORTH 4E-21H-O268 - CPR - FINAL						Out of range
EDITH ANN-DUCKWORTH 4F-21H-O268 - CPR - FINAL						Out of range
EDITH ANN-DUCKWORTH 4G-21H-O268 - CPR - FINA						Out of range
EDITH ANN-DUCKWORTH 4H-21H-O268 - CPR - FINA						Out of range
ERIE CORP 42-4 - KMG WELL - NO SURVEYS						Out of range
EVERIST 12-10 - KMG WELL - SURVEYS						Out of range
EVERIST 12-10X - KMG WELL - NO SURVEYS						Out of range
EVERIST 13-10 - KMG WELL - SURVEYS						Out of range
EVERIST 33-10 - KMG WELL - SURVEYS						Out of range
FAIRVIEW 1 - EXTRACTION WELL - NO SURVEYS						Out of range
FAIRVIEW 3 - EXTRACTION O&G LLC - SURVEYS						Out of range
FAIRVIEW 4 - EXTRACTION O&G LLC - SURVEYS						Out of range
FAIRVIEW 5 - EXTRACTION O&G LLC - SURVEYS						Out of range
FILE 1-17 - CPR WELL - SURVEYS						Out of range
FILE 31-17 - CPR WELL - SURVEYS						Out of range
FILE 32-17 - CPR WELL - SURVEYS						Out of range
FILE 41-17 - CPR WELL - SURVEYS						Out of range
FILE 42-17 - CPR WELL - NO SURVEYS						Out of range
FILE 4-2-17 - CPR WELL - SURVEYS						Out of range
FILE 42-17X - CPR WELL - SURVEYS						Out of range
FILE 6-0-17 - CPR WELL - SURVEYS						Out of range
FILE 8-2-17 - CPR WELL - SURVEYS						Out of range
FREDERICKS 13-27 - KMG WELL - NO SURVEYS						Out of range
FREDERICKS 13-27X - KMG WELL - SURVEYS						Out of range
GARVER U 34-5JI - KMG WELL - NO SURVEYS						Out of range
HINGLEY 1 - KPK WELL - NO SURVEYS						Out of range
HINGLEY 2 - KPK WELL - NO SUREYS						Out of range
HSR-STROMQUIST 14-21 - KMG WELL - GYRO	1,981.21	1,931.85	137.47	130.64	20.127	CC
HSR-STROMQUIST 14-21 - KMG WELL - GYRO	2,000.00	1,950.31	137.52	130.62	19.935	ES
HSR-STROMQUIST 14-21 - KMG WELL - GYRO	2,100.00	2,048.08	139.44	132.27	19.438	SF
JACK A MLEYNEK 2 - KPK WELL - NO SURVEYS						Out of range
JACK MLEYNEK 1 - KPK WELL - NO SURVEYS						Out of range
JACK MLEYNEK 3 - KPK WELL - NO SURVEYS						Out of range
JACK MLEYNEK 4 - KPK WELL - NO SURVEYS						Out of range
JACK MLEYNEK 5 - KPK WELL - NO SURVEYS						Out of range
JILLSON 0-6-22 - CPR WELL - SURVEYS						Out of range
JILLSON 1 - KPK WELL - NO SURVEYS						Out of range
JILLSON 11-22 - CPR WELL - GYRO						Out of range
JILLSON 12-22 - CPR WELL - GYRO						Out of range
JILLSON 14-22 - CPR WELL - GYRO						Out of range
JILLSON 3 - KPK WELL - NO SURVEYS						Out of range

CC - Min centre to center distance or convergent point, SF - min separation factor, ES - min ellipse separation

Cathedral Energy Services

Anticollision Summary Report

Company:	Crestone Peak Resources	Local Co-ordinate Reference:	Well DREAM WEAVER South 3B-21H-N268 - Slot DREAM WEAVER South 3B-21H-N268 SHL
Project:	DJ BASIN	TVD Reference:	23' KB @ 4924.00usft (Original Well Elev)
Reference Site:	S21-T2N-R68W	MD Reference:	23' KB @ 4924.00usft (Original Well Elev)
Site Error:	0.00 usft	North Reference:	True
Reference Well:	DREAM WEAVER South 3B-21H-N268	Survey Calculation Method:	Minimum Curvature
Well Error:	0.00 usft	Output errors are at	2.00 sigma
Reference Wellbore	OH	Database:	USA EDM 5000 Multi Users DB
Reference Design:	PLAN #1	Offset TVD Reference:	Offset Datum

Summary						
Site Name Offset Well - Wellbore - Design	Reference Measured Depth (usft)	Offset Measured Depth (usft)	Distance Between Centres (usft)	Distance Between Ellipses (usft)	Separation Factor	Warning
S21-T2N-R68W (OFFSETS)						
JILLSON 5 - KPK WELL - NO SURVEYS						Out of range
JILLSON A 1 - KPK WELL - NO SURVEYS	100.00	75.99	1,471.88	1,471.68	7,355.842	CC
JILLSON A 1 - KPK WELL - NO SURVEYS	200.00	175.98	1,472.15	1,471.60	2,678.243	ES
JILLSON A 1 - KPK WELL - NO SURVEYS	4,000.00	3,883.02	2,236.06	2,220.87	147.213	SF
JILLSON A 2 - KPK WELL - NO SURVEYS	808.41	775.54	1,693.71	1,690.98	621.139	CC, ES
JILLSON A 2 - KPK WELL - NO SURVEYS	4,300.00	4,174.96	2,222.16	2,204.41	125.245	SF
JILLSON A 3 - KPK WELL - NO SURVEYS						Out of range
JILLSON A 4 - KPK WELL - NO SURVEYS						Out of range
JILLSON-EAST RINN 3A-22H-M268 - CPR WELL - SUR						Out of range
JILLSON-EAST RINN 3B-22H-M268 - CPR WELL - SUR						Out of range
JILLSON-EAST RINN 3C-22H-M268 - CPR WELL - SUR						Out of range
KENNEDY 1 - MACEY & MERSHON WELL - NO SURVE						Out of range
KENNEDY 31-21 - CPR WELL - GYRO						Out of range
KENNEDY 32-21 - CPR WELL - GYRO						Out of range
KENNEDY 41-21 - CPR WELL - GYRO						Out of range
KENNEDY 4-2-21 - CPR WELL - SURVEYS						Out of range
KENNEDY 6-0-21 - CPR WELL - SURVEYS						Out of range
KENNEDY 6-4-21 - CPR WELL - SURVEYS						Out of range
KENNEDY 8-0-21 - CPR WELL - SURVEYS						Out of range
KENNEDY GAS UNIT 1 - CPR WELL - GYRO						Out of range
LONGMONT 8-10K - TOP OPERATING WELL - NO SUR						Out of range
LONGMONT FARMS 1 - KPK WELL - NO SURVEYS						Out of range
LONGMONT FARMS 3 - KPK WELL - NO SURVEYS						Out of range
MAX SERAFINI 1 - KPK WELL - NO SURVEYS						Out of range
MAX SERAFINI C 1 - KPK WELL - NO SURVEYS						Out of range
MILES 1 - KPK WELL - NO SURVEYS						Out of range
MILES 33-3M - KMG WELL - GYRO	15,545.66	7,636.69	1,036.57	897.12	7.433	CC, ES, SF
MILES 4 - KPK WELL - NO SURVEYS						Out of range
MILES 5 - KPK WELL - NO SURVEYS						Out of range
MILES JOSEPHINE 1 - KPK WELL - NO SURVEYS						Out of range
MILES JOSEPHINE 2 - KPK WELL - NO SURVEYS						Out of range
MILES JOSEPHINE B 1 - KPK WELL - NO SURVEYS						Out of range
MILLER 12-27 - CPR WELL - GYRO						Out of range
MILTON NELSON 1 - KPK WELL - NO SURVEYS	1,956.75	1,900.37	781.98	774.33	102.170	CC
MILTON NELSON 1 - KPK WELL - NO SURVEYS	2,000.00	1,941.73	782.04	774.22	99.907	ES
MILTON NELSON 1 - KPK WELL - NO SURVEYS	5,200.00	4,960.00	1,085.32	1,059.48	42.016	SF
MILTON NELSON UN-C 1 - KPK WELL - NO SURVEYS	3,785.91	3,684.68	923.90	906.15	52.038	CC
MILTON NELSON UN-C 1 - KPK WELL - NO SURVEYS	3,900.00	3,804.29	924.28	905.71	49.785	ES
MILTON NELSON UN-C 1 - KPK WELL - NO SURVEYS	5,500.00	5,227.00	1,012.45	983.14	34.546	SF
MILTON NELSON UNIT 1 - KPK WELL - NO SURVEYS	100.00	84.00	425.15	425.00	2,771.941	CC
MILTON NELSON UNIT 1 - KPK WELL - NO SURVEYS	100.00	84.00	425.15	425.00	2,771.826	ES
MILTON NELSON UNIT 1 - KPK WELL - NO SURVEYS	5,200.00	4,977.00	1,412.03	1,387.75	58.161	SF
MLEYNEK 28-10M - KMG WELL - GYRO						Out of range
MLEYNEK U 28-10JI - KMG WELL - GYRO						Out of range
MLEYNEK U 28-15JI - KMG WELL - GYRO						Out of range
MORGAN-A 4 - KPK WELL - NO SURVEYS						Out of range
NELSON 42-33 /2-68/ 2 - ANADARKO WELL - NO SURV						Out of range
NELSON DUANE E 41-33 (2-68) 1 - CHAMPLIN PETRO						Out of range
NELSON DUANE E 41-33 (2-68) 1-X - KMG WELL - NO						Out of range
NELSON E UNIT 2 - CPR WELL - GYRO	18,267.73	7,553.53	1,870.81	1,690.83	10.395	CC
NELSON E UNIT 2 - CPR WELL - GYRO	18,300.00	7,552.62	1,871.09	1,690.47	10.359	ES

CC - Min centre to center distance or convergent point, SF - min separation factor, ES - min ellipse separation

Cathedral Energy Services

Anticollision Summary Report

Company:	Crestone Peak Resources	Local Co-ordinate Reference:	Well DREAM WEAVER South 3B-21H-N268 - Slot DREAM WEAVER South 3B-21H-N268 SHL
Project:	DJ BASIN	TVD Reference:	23' KB @ 4924.00usft (Original Well Elev)
Reference Site:	S21-T2N-R68W	MD Reference:	23' KB @ 4924.00usft (Original Well Elev)
Site Error:	0.00 usft	North Reference:	True
Reference Well:	DREAM WEAVER South 3B-21H-N268	Survey Calculation Method:	Minimum Curvature
Well Error:	0.00 usft	Output errors are at	2.00 sigma
Reference Wellbore	OH	Database:	USA EDM 5000 Multi Users DB
Reference Design:	PLAN #1	Offset TVD Reference:	Offset Datum

Summary						
Site Name Offset Well - Wellbore - Design	Reference Measured Depth (usft)	Offset Measured Depth (usft)	Distance Between Centres (usft)	Distance Between Ellipses (usft)	Separation Factor	Warning
S21-T2N-R68W (OFFSETS)						
NELSON E UNIT 2 - CPR WELL - GYRO	18,500.00	7,547.02	1,885.17	1,701.72	10.276	SF
NELSON MILTON H 'D' 1 - KMG WELL - GYRO	11,212.95	7,530.49	1,192.46	1,119.59	16.364	CC, ES
NELSON MILTON H 'D' 1 - KMG WELL - GYRO	11,500.00	7,531.13	1,226.52	1,148.89	15.798	SF
NELSON MILTON H 'M' 1 - KMG WELL - GYRO	12,562.52	7,555.32	1,203.46	1,110.23	12.908	CC
NELSON MILTON H 'M' 1 - KMG WELL - GYRO	12,600.00	7,555.26	1,204.04	1,109.99	12.802	ES
NELSON MILTON H 'M' 1 - KMG WELL - GYRO	12,800.00	7,554.94	1,226.66	1,129.48	12.622	SF
NELSON MILTON-F 1 - KPK WELL - NO SURVEYS						Out of range
NORTH RINN 0-4-9 - CPR WELL - SURVEYS						Out of range
NORTH RINN 0-6-9 - CPR WELL - SURVEYS						Out of range
NORTH RINN 0-8-9 - CPR WELL - SURVEYS						Out of range
NORTH RINN 13-9 - CPR WELL - SURVEYS						Out of range
NORTH RINN 14-9 - CPR WELL - SURVEYS						Out of range
NORTH RINN 24-9 - CPR WELL - SURVEYS						Out of range
NORTH RINN 2-4-9 - CPR WELL - SURVEYS						Out of range
NORTH RINN 2-6-9 - CPR WELL - SURVEYS						Out of range
OSKARSON 1 - HRM RES II LLC - NO SURVEYS						Out of range
OSKARSON 2 - ENERVEST OP - NO SURVEYS						Out of range
OSKARSON 24-33 - CPR WELL - GYRO	19,289.41	7,628.53	1,319.05	1,118.60	6.580	CC
OSKARSON 24-33 - CPR WELL - GYRO	19,300.00	7,628.48	1,319.09	1,118.52	6.577	ES
OSKARSON 24-33 - CPR WELL - GYRO	19,364.34	7,628.21	1,321.18	1,120.10	6.571	SF
OSKARSON 2-8-33 - CPR WELL - SURVEYS	19,364.34	7,734.58	825.57	637.32	4.386	CC, ES, SF
OSKARSON 3 - HRM RES II LLC - NO SURVEYS						Out of range
OSKARSON-E 1 - CPR WELL - GYRO	18,890.01	7,615.05	190.93	-3.25	0.983	Level 1, CC, ES, SF
OSKARSON-E 2 - CPR WELL - NO SURVEYS						Out of range
RASMUSSEN 3 - PETERSON ENERGY - GYRO						Out of range
RASMUSSEN 1 - PETERSON - GYRO	112.93	144.59	1,682.05	1,681.77	6,089.567	CC, ES
RASMUSSEN 1 - PETERSON - GYRO	3,800.00	3,707.71	2,228.92	2,213.70	146.406	SF
RASMUSSEN 11-28 - CPR WELL - SURVEYS	9,738.24	7,878.09	307.56	234.94	4.236	CC, ES
RASMUSSEN 11-28 - CPR WELL - SURVEYS	9,800.00	7,877.87	313.70	239.61	4.234	SF
RASMUSSEN 12-28 - CPR WELL - SURVEYS	11,247.05	7,686.54	222.43	143.84	2.830	CC, ES, SF
RASMUSSEN 2 - PETERSON ENERGY - NO SURVEYS	100.00	112.00	2,227.25	2,227.05	10,000.000	CC
RASMUSSEN 2 - PETERSON ENERGY - NO SURVEYS	100.00	112.00	2,227.25	2,227.05	10,000.000	ES
RASMUSSEN 2 - PETERSON ENERGY - NO SURVEYS	300.00	311.85	2,232.29	2,231.28	2,211.118	SF
RASMUSSEN 21-28 - CPR WELL - GYRO	9,801.64	7,546.19	1,353.71	1,300.70	25.539	CC, ES
RASMUSSEN 21-28 - CPR WELL - GYRO	10,000.00	7,545.23	1,368.16	1,313.84	25.188	SF
RASMUSSEN 22-28 - CPR WELL - GYRO	11,142.05	7,582.50	1,262.00	1,190.01	17.529	CC, ES
RASMUSSEN 22-28 - CPR WELL - GYRO	11,200.00	7,582.44	1,263.33	1,190.93	17.448	SF
RASMUSSEN 2-4-28 - CPR WELL - SURVEYS	11,755.93	7,587.20	898.50	811.35	10.310	CC, ES, SF
RASMUSSEN 31-28 - CPR WELL - GYRO	118.08	154.08	2,198.34	2,198.07	8,234.183	CC
RASMUSSEN 31-28 - CPR WELL - GYRO	200.00	242.05	2,198.35	2,197.78	3,876.467	ES
RASMUSSEN 31-28 - CPR WELL - GYRO	500.00	544.04	2,223.08	2,221.42	1,336.908	SF
RASMUSSEN 32-28 32-28 - CPR WELL - GYRO						Out of range
RASMUSSEN 4-0-28 - CPR WELL - SURVEYS	9,199.90	7,999.89	2,201.23	2,130.79	31.250	CC
RASMUSSEN 4-0-28 - CPR WELL - SURVEYS	9,200.00	7,999.88	2,201.23	2,130.79	31.250	ES
RASMUSSEN 4-0-28 - CPR WELL - SURVEYS	9,400.00	7,996.39	2,210.30	2,139.22	31.095	SF
RASMUSSEN 41-28 - CPR WELL - GYRO						Out of range
RASMUSSEN 42-28 - CPR WELL - SURVEYS						Out of range
RASMUSSEN 4-2-28 - CPR WELL - SURVEYS						Out of range
RASMUSSEN 4-4-28 - CPR WELL - SURVEYS	11,824.80	7,656.20	2,148.43	2,058.87	23.988	CC, ES
RASMUSSEN 4-4-28 - CPR WELL - SURVEYS	12,300.00	7,659.99	2,200.35	2,105.30	23.150	SF
RASMUSSEN 44-29 - KPK WELL - NO SURVEYS						Out of range

CC - Min centre to center distance or convergent point, SF - min separation factor, ES - min ellipse separation

Cathedral Energy Services

Anticollision Summary Report

Company:	Crestone Peak Resources	Local Co-ordinate Reference:	Well DREAM WEAVER South 3B-21H-N268 - Slot DREAM WEAVER South 3B-21H-N268 SHL
Project:	DJ BASIN	TVD Reference:	23' KB @ 4924.00usft (Original Well Elev)
Reference Site:	S21-T2N-R68W	MD Reference:	23' KB @ 4924.00usft (Original Well Elev)
Site Error:	0.00 usft	North Reference:	True
Reference Well:	DREAM WEAVER South 3B-21H-N268	Survey Calculation Method:	Minimum Curvature
Well Error:	0.00 usft	Output errors are at	2.00 sigma
Reference Wellbore	OH	Database:	USA EDM 5000 Multi Users DB
Reference Design:	PLAN #1	Offset TVD Reference:	Offset Datum

Summary						
Site Name Offset Well - Wellbore - Design	Reference Measured Depth (usft)	Offset Measured Depth (usft)	Distance Between Centres (usft)	Distance Between Ellipses (usft)	Separation Factor	Warning
S21-T2N-R68W (OFFSETS)						
RASMUSSEN 4-A - PETERSON ENERGY - GYRO	0.00	0.00	2,039.95			
RASMUSSEN 4-A - PETERSON ENERGY - GYRO	100.00	86.88	2,040.02	2,039.88	10,000.000	ES
RASMUSSEN 4-A - PETERSON ENERGY - GYRO	4,800.00	4,658.56	2,234.86	2,212.50	99.946	SF
RASMUSSEN C" 2" - CPR WELL - GYRO						Out of range
RASMUSSEN-C UNIT 1 - CPR WELL - GYRO	10,324.44	7,546.31	409.89	349.92	6.835	CC, ES, SF
RODGERS 1 - KPK WELL - NO SURVEYS						Out of range
SAUNDERS TRUST 8-2K8 - EXTRACTION WELL - NO						Out of range
SCHLAGEL 2 - EXTRACTION WELL - NO SURVEYS						Out of range
SERAFINI E MAX GU 1 - KMG WELL - GYRO						Out of range
SERAFINI-B 2 - KPK WELL - NO SURVEYS						Out of range
SHAW 1 - KPK WELL - NO SURVEYS						Out of range
SHAW 15-20 - KPK - SURVEYS						Out of range
SHAW 16-20 - KPK - SURVEYS	5,266.16	5,070.00	1,834.69	1,798.86	51.207	CC, ES
SHAW 16-20 - KPK - SURVEYS	5,400.00	5,070.00	1,839.57	1,803.35	50.791	SF
STROMQUIST 1 - KPK WELL - NO SURVEYS	5,442.55	4,940.00	1,622.29	1,596.62	63.183	CC, ES
STROMQUIST 1 - KPK WELL - NO SURVEYS	5,700.00	4,940.00	1,642.59	1,616.01	61.801	SF
STROMQUIST 11-21 - KMG WELL - GYRO	1,792.07	1,760.73	802.04	795.86	129.679	CC
STROMQUIST 11-21 - KMG WELL - GYRO	1,800.00	1,768.31	802.04	795.83	129.092	ES
STROMQUIST 11-21 - KMG WELL - GYRO	7,100.00	6,898.47	1,545.03	1,511.44	46.000	SF
STROMQUIST 13-21 - KMG WELL - GYRO	8,625.48	7,560.89	460.83	421.40	11.688	CC, ES, SF
STROMQUIST 22-21 - KMG WELL - SURVEYS	1,308.91	1,249.26	841.90	837.84	207.400	CC, ES
STROMQUIST 22-21 - KMG WELL - SURVEYS	7,000.00	6,906.14	1,060.27	1,013.52	22.680	SF
STROMQUIST 23-21 - KMG WELL - SURVEYS	108.89	96.88	444.42	444.14	1,556.632	CC
STROMQUIST 23-21 - KMG WELL - SURVEYS	200.00	188.93	444.74	444.10	696.068	ES
STROMQUIST 23-21 - KMG WELL - SURVEYS	8,300.00	7,561.11	1,998.64	1,960.60	52.540	SF
STROMQUIST 34-21 - KMG WELL - SURVEYS	9,090.13	7,637.61	340.92	291.58	6.909	CC
STROMQUIST 34-21 - KMG WELL - SURVEYS	9,100.00	7,637.36	341.06	291.30	6.855	ES
STROMQUIST 34-21 - KMG WELL - SURVEYS	9,200.00	7,634.82	358.17	304.62	6.688	SF
STROMQUIST 35-21 - KMG WELL - SURVEYS	108.67	97.71	467.28	467.00	1,679.969	CC
STROMQUIST 35-21 - KMG WELL - SURVEYS	200.00	190.20	467.59	466.94	720.074	ES
STROMQUIST 35-21 - KMG WELL - SURVEYS	9,114.97	7,622.83	937.47	887.02	18.579	SF
TRAVELERS 28-11M - KMG WELL - GYRO	12,915.73	7,581.16	903.84	805.19	9.162	CC, ES, SF
TRAVELERS U 28-13DI - KMG WELL - GYRO	13,826.82	7,577.87	162.23	49.96	1.445	Level 3, CC, ES, SF
UPRC 33-1M - KMG WELL - GYRO						Out of range
UPRR 43 PAN AM-B 7 - KPK WELL - NO SURVEYS						Out of range
WESTERN 3-21A - KMG WELL - GYRO						Out of range
WILDFLOWER 12-27 - KMG WELL - SURVEYS						Out of range
WILDFLOWER 33-27 - KMG WELL - SURVEYS						Out of range
WOOLEY UNIT 1 - KPK WELL - NO SURVEYS						Out of range

CC - Min centre to center distance or convergent point, SF - min separation factor, ES - min ellipse separation

Cathedral Energy Services

Anticollision Summary Report

Company:	Crestone Peak Resources	Local Co-ordinate Reference:	Well DREAM WEAVER South 3B-21H-N268 - Slot DREAM WEAVER South 3B-21H-N268 SHL
Project:	DJ BASIN	TVD Reference:	23' KB @ 4924.00usft (Original Well Elev)
Reference Site:	S21-T2N-R68W	MD Reference:	23' KB @ 4924.00usft (Original Well Elev)
Site Error:	0.00 usft	North Reference:	True
Reference Well:	DREAM WEAVER South 3B-21H-N268	Survey Calculation Method:	Minimum Curvature
Well Error:	0.00 usft	Output errors are at	2.00 sigma
Reference Wellbore	OH	Database:	USA EDM 5000 Multi Users DB
Reference Design:	PLAN #1	Offset TVD Reference:	Offset Datum

Summary						
Site Name Offset Well - Wellbore - Design	Reference Measured Depth (usft)	Offset Measured Depth (usft)	Distance Between Centres (usft)	Distance Between Ellipses (usft)	Separation Factor	Warning
S32-T2N-R68W						
Anderson 22-32 - KPK WELL - NO SURVEYS						Out of range
Anderson 32-32 - CPR WELL - SURVEYS						Out of range
Anderson 41-32 - CPR - GYRO	14,913.14	7,487.87	1,055.11	926.19	8.184	CC, ES
Anderson 41-32 - CPR - GYRO	15,100.00	7,486.44	1,071.52	938.39	8.049	SF
Anderson 4-2-32 - CPR WELL - SURVEYS						Out of range
Anderson 6-4-32 - CPR WELL - SURVEYS	16,862.04	7,780.51	2,077.71	1,901.05	11.761	CC
Anderson 6-4-32 - CPR WELL - SURVEYS	16,900.00	7,780.56	2,078.05	1,900.34	11.694	ES
Anderson 6-4-32 - CPR WELL - SURVEYS	17,200.00	7,780.96	2,105.01	1,921.02	11.441	SF
Anderson Trust 1 - KPK - NO SURVEYS						Out of range
Anderson Trust 1 A - CPR WELL - GYRO						Out of range
Anderson Trust 2-A - CPR WELL - NO SURVEYS						Out of range
Anderson Trust 32-2 - CPR WELL - GYRO						Out of range
Anderson Trust 32-8 - CPR WELL - GYRO	16,428.46	7,537.89	1,521.32	1,367.52	9.892	CC
Anderson Trust 32-8 - CPR WELL - GYRO	16,500.00	7,535.84	1,523.00	1,367.39	9.788	ES
Anderson Trust 32-8 - CPR WELL - GYRO	16,600.00	7,532.96	1,530.95	1,373.35	9.714	SF
Anderson Trust C 1 - CPR WELL - SURVEYS	15,368.76	7,531.92	1,686.19	1,554.62	12.817	CC
Anderson Trust C 1 - CPR WELL - SURVEYS	15,400.00	7,532.49	1,686.48	1,554.12	12.742	ES
Anderson Trust C 1 - CPR WELL - SURVEYS	15,700.00	7,537.83	1,718.40	1,580.62	12.472	SF
Anderson Trust C Unit 2 - CPR WELL - GYRO						Out of range
Brown 22-5 - CPR WELL - GYRO						Out of range
Brown 31-5 - CPR WELL - SURVEYS						Out of range
Brown 41-5 - CPR WELL - SURVEYS	19,364.34	7,890.06	1,795.13	1,614.87	9.959	CC, ES, SF
Brown 5-3 - CPR WELL - GYRO						Out of range
Brown 5-5 - CPR WELL - GYRO						Out of range
Brown C Unit 1 - CPR WELL - GYRO						Out of range
Brown C Unit 2 - CPR WELL - GYRO						Out of range
Bryant 10-30 - KMG WELL - SURVEYS						Out of range
Bryant 16-30 - KMG WELL - SURVEYS						Out of range
Bryant 20-30 - KMG WELL - SURVEYS						Out of range
Bryant 23-30 - KMG WELL - SURVEYS						Out of range
Bryant 24-30 - KMG WELL - SURVEYS						Out of range
Bryant 33-29 - KMG WELL - SURVEYS						Out of range
Bryant 36-30 - KMG WELL - SURVEYS						Out of range
Bryant 8-30 - KMG WELL - SURVEYS						Out of range
Bryant Federal 37-30 - KMG WELL - SURVEYS						Out of range
Bulthaup 1-6 - KMG WELL - GYRO						Out of range
Bulthaup 16-6 - KMG WELL - SURVEYS						Out of range
Bulthaup 17-6 - KMG WELL - SURVEYS						Out of range
Bulthaup 24-6 - KMG WELL - SURVEYS						Out of range
Bulthaup 27-6 - KMG WELL - SURVEYS						Out of range
Bulthaup 39-6 - KMG WELL - SURVEYS						Out of range
Bulthaup 40-6 - KMG WELL - SURVEYS						Out of range
Bulthaup 8-6 - KMG WELL - GYRO						Out of range
Bulthaup 9-6 - KMG WELL - SURVEYS						Out of range
Canino 1-X - HUGHES CW - NO SURVEYS						Out of range
Champlin 86 Amoco F 6 - KPK - NO SURVEYS						Out of range
Champlin 86 N 1 - KMG WELL - GYRO						Out of range
Champlin Amoco 86 F 7 - KPK WELL - SURVEYS						Out of range
Cinque 1 - FOUNDATION WELL - NO SURVEYS						Out of range
Cinque 2 - FOUNDATION WELL - NO SURVEYS						Out of range
Cinque 4 - FOUNDATION WELL - NO SURVEYS						Out of range

CC - Min centre to center distance or convergent point, SF - min separation factor, ES - min ellipse separation

Cathedral Energy Services

Anticollision Summary Report

Company:	Crestone Peak Resources	Local Co-ordinate Reference:	Well DREAM WEAVER South 3B-21H-N268 - Slot DREAM WEAVER South 3B-21H-N268 SHL
Project:	DJ BASIN	TVD Reference:	23' KB @ 4924.00usft (Original Well Elev)
Reference Site:	S21-T2N-R68W	MD Reference:	23' KB @ 4924.00usft (Original Well Elev)
Site Error:	0.00 usft	North Reference:	True
Reference Well:	DREAM WEAVER South 3B-21H-N268	Survey Calculation Method:	Minimum Curvature
Well Error:	0.00 usft	Output errors are at	2.00 sigma
Reference Wellbore	OH	Database:	USA EDM 5000 Multi Users DB
Reference Design:	PLAN #1	Offset TVD Reference:	Offset Datum

Summary						
Site Name	Reference Measured Depth (usft)	Offset Measured Depth (usft)	Distance Between Centres (usft)	Distance Between Ellipses (usft)	Separation Factor	Warning
Offset Well - Wellbore - Design						
S32-T2N-R68W						
FILE 3A-32H-K268 - OH - FINAL						Out of range
FILE 3B-32H-K268 - OH - FINAL						Out of range
FILE 3C-32H-K268 - OH - FINAL						Out of range
FILE 3D-32H-K268 - OH - FINAL						Out of range
FILE 3E-32H-K268 - OH - FINAL						Out of range
FILE 3F-32H-K268 - OH - FINAL						Out of range
FILE 3G-32H-K268 - OH - FINAL						Out of range
FILE 3H-32H-K268 - OH - FINAL						Out of range
FILE 3Q-32H-K268 - OH - FINAL						Out of range
FILE 3R-32H-K268 - OH - FINAL						Out of range
FILE 3S-32H-K268 - OH - FINAL						Out of range
FILE 3T-32H-K268 - OH - FINAL						Out of range
FILE FED 3I-32H-K268 - OH - FINAL						Out of range
FILE FED 3J-32H-K268 - OH - FINAL						Out of range
FILE FED 3K-32H-K268 - OH - FINAL						Out of range
FILE FED 3K-32H-K268 - OH - PLAN #4						Out of range
FILE FED 3L-32H-K268 - OH - FINAL						Out of range
FILE FED 3M-32H-K268 - OH - FINAL						Out of range
FILE FED 3N-32H-K268 - OH - FINAL						Out of range
FILE FED 3O-32H-K268 - OH - FINAL						Out of range
FILE FED 3P-32H-K268 - OH - FINAL						Out of range
Foster 33-5 - CPR WELL - SURVEYS						Out of range
Foster 43-5 - CPR WELL - SURVEYS						Out of range
Foster 4-5 - CPR WELL - SURVEYS						Out of range
Foster 4-6-5 - CPR WELL - SURVEYS						Out of range
Foster 6-4-5 - CPR - SURVEYS						Out of range
Foster 6-4-5X - CPR WELL - SURVEYS						Out of range
Foster 6-8-5 - CPR WELL - SURVEYS						Out of range
Foster 8-8-5 - CPR WELL - SURVEYS						Out of range
Foster E Unit 1 - CPR - GYRO						Out of range
Gene 11-5 - KERR-MCGEE - GYRO						Out of range
Hankins 1 - KPK WELL - NO SURVEYS						Out of range
Hauck 17-29 - KMG WELL - SURVEYS	10,369.57	7,704.99	1,767.42	1,696.21	24.823	CC
Hauck 17-29 - KMG WELL - SURVEYS	10,400.00	7,705.07	1,767.68	1,695.81	24.597	ES
Hauck 17-29 - KMG WELL - SURVEYS	10,900.00	7,706.48	1,845.29	1,764.52	22.845	SF
Hauck 24-29 - KMG WELL - SURVEYS	11,726.23	7,619.96	1,719.24	1,633.68	20.095	CC, ES
Hauck 24-29 - KMG WELL - SURVEYS	12,100.00	7,620.72	1,759.40	1,668.37	19.329	SF
Hauck 7-29 - KMG WELL - SURVEYS						Out of range
HSR-Bryant 9-30A - KMG WELL - GYRO						Out of range
HSR-Williams 10-20 - KMG WELL - GYRO	7,748.22	7,395.25	2,129.67	2,097.00	65.188	CC, ES
HSR-Williams 10-20 - KMG WELL - GYRO	8,300.00	7,501.32	2,234.85	2,199.53	63.281	SF
HWY52 4A-32H-O268 - OH - FINAL						Out of range
HWY52 4B-32H-O268 - OH - FINAL						Out of range
HWY52 4C-32H-O268 - OH - FINAL						Out of range
HWY52 4D-32H-O268 - OH - FINAL						Out of range
HWY52 4E-32H-O268 - OH - FINAL	19,190.64	7,797.13	2,192.64	1,985.23	10.571	CC
HWY52 4E-32H-O268 - OH - FINAL	19,364.34	7,976.11	2,192.70	1,981.58	10.386	ES, SF
HWY52 4F-32H-O268 - OH - FINAL	19,364.34	8,156.00	1,864.68	1,652.36	8.782	CC, ES, SF
HWY52 4G-32H-O268 - OH - FINAL	19,364.34	8,368.21	1,638.26	1,425.35	7.695	CC, ES, SF
HWY52 4H-32H-O268 - OH - FINAL	19,364.34	8,112.42	1,345.86	1,134.68	6.373	CC, ES, SF
HWY52 4I-32H-O268 - OH - FINAL	19,197.63	8,015.00	1,204.61	995.68	5.766	CC

CC - Min centre to center distance or convergent point, SF - min separation factor, ES - min ellipse separation

Cathedral Energy Services

Anticollision Summary Report

Company:	Crestone Peak Resources	Local Co-ordinate Reference:	Well DREAM WEAVER South 3B-21H-N268 - Slot DREAM WEAVER South 3B-21H-N268 SHL
Project:	DJ BASIN	TVD Reference:	23' KB @ 4924.00usft (Original Well Elev)
Reference Site:	S21-T2N-R68W	MD Reference:	23' KB @ 4924.00usft (Original Well Elev)
Site Error:	0.00 usft	North Reference:	True
Reference Well:	DREAM WEAVER South 3B-21H-N268	Survey Calculation Method:	Minimum Curvature
Well Error:	0.00 usft	Output errors are at	2.00 sigma
Reference Wellbore	OH	Database:	USA EDM 5000 Multi Users DB
Reference Design:	PLAN #1	Offset TVD Reference:	Offset Datum

Summary						
Site Name Offset Well - Wellbore - Design	Reference Measured Depth (usft)	Offset Measured Depth (usft)	Distance Between Centres (usft)	Distance Between Ellipses (usft)	Separation Factor	Warning
S32-T2N-R68W						
HWY52 4I-32H-O268 - OH - FINAL	19,300.00	8,090.36	1,206.11	994.99	5.713	ES
HWY52 4I-32H-O268 - OH - FINAL	19,364.34	8,145.61	1,208.04	995.58	5.686	SF
HWY52 4J-32H-O268 - OH - FINAL	19,364.34	8,378.45	864.80	650.90	4.043	CC, ES, SF
HWY52 4K-32H-O268 - OH - FINAL	19,364.34	8,219.72	742.89	533.87	3.554	CC, ES, SF
HWY52 4L-32H-O268 - OH - FINAL						Out of range
HWY52 4M-32H-O268 - OH - FINAL						Out of range
HWY52 4N-32H-O268 - OH - FINAL						Out of range
HWY52 4O-32H-O268 - OH - FINAL						Out of range
HWY52 4P-32H-O268 - OH - FINAL	14,785.01	12,043.00	2,201.85	2,012.65	11.638	CC
HWY52 4P-32H-O268 - OH - FINAL	14,800.00	12,043.00	2,201.90	2,012.31	11.614	ES
HWY52 4P-32H-O268 - OH - FINAL	15,000.00	12,043.00	2,212.32	2,018.23	11.398	SF
HWY52 4Q-32H-O268 - OH - FINAL	14,812.84	11,882.00	1,885.07	1,697.42	10.045	CC, ES
HWY52 4Q-32H-O268 - OH - FINAL	18,700.00	18,700.00	2,094.75	1,808.51	7.318	SF
HWY52 4R-32H-O268 - OH - FINAL	14,871.45	12,025.00	1,555.14	1,366.41	8.240	CC
HWY52 4R-32H-O268 - OH - FINAL	14,900.00	12,025.00	1,555.40	1,365.74	8.201	ES
HWY52 4R-32H-O268 - OH - FINAL	15,000.00	12,027.51	1,560.44	1,367.94	8.106	SF
HWY52 4S-32H-O268 - OH - FINAL	15,715.54	11,323.70	1,386.02	1,196.20	7.302	CC
HWY52 4S-32H-O268 - OH - FINAL	15,800.00	11,268.32	1,386.91	1,196.01	7.265	ES
HWY52 4S-32H-O268 - OH - FINAL	15,900.00	11,187.78	1,389.81	1,198.16	7.252	SF
HWY52 4T-32H-O268 - OH - FINAL	14,895.28	11,965.00	1,307.10	1,118.47	6.929	CC
HWY52 4T-32H-O268 - OH - FINAL	14,900.00	11,965.00	1,307.11	1,118.31	6.923	ES
HWY52 4T-32H-O268 - OH - FINAL	17,500.00	17,500.00	1,466.33	1,167.77	4.911	SF
HWY52 4U-32H-O268 - OH - FINAL	14,885.64	11,990.00	1,029.75	841.11	5.459	CC
HWY52 4U-32H-O268 - OH - FINAL	14,900.00	11,990.00	1,029.85	840.60	5.442	ES
HWY52 4U-32H-O268 - OH - FINAL	18,900.00	8,116.62	1,093.85	888.58	5.329	SF
HWY52 4V-32H-O268 - OH - FINAL	14,908.31	12,092.00	793.68	607.27	4.258	CC, ES
HWY52 4V-32H-O268 - OH - FINAL	15,000.00	12,069.09	798.63	609.01	4.212	SF
HWY52 4W-32H-O268 - OH - FINAL	14,930.93	12,105.00	537.45	349.26	2.856	CC, ES
HWY52 4W-32H-O268 - OH - FINAL	15,000.00	12,068.68	540.66	350.29	2.840	SF
Jack Hein Unit 1 - HS RESOURCES WELL - NO SURVE						Out of range
John Lamar 1 - KPK WELL - NO SURVEYS						Out of range
Johnson 32-30 - KPK WELL - NO SURVEYS						Out of range
Johnson 7-30A - KMG WELL - GYRO						Out of range
Kenneth Koch 1 - KPK WELL - NO SURVEYS						Out of range
Kenyon 34-19 - CPR WELL - SURVEYS						Out of range
Kenyon 4-8-19 - CPR WELL - SURVEYS						Out of range
Kenyon 8-4-19 - CPR WELL - SURVEYS						Out of range
Kenyon 8-6-19 - CPR WELL - SURVEYS						Out of range
Kenyon 8-8-19 - CPR WELL - SURVEYS						Out of range
Koch 41-6 - KPK WELL - NO SURVEYS						Out of range
Koch Kenneth E A-1 - KMG WELL - SURVEY						Out of range
Milton H Nelson H-1 - KMG WELL - GYRO						Out of range
Milton H Nelson I1 - KMG WELL - GYRO						Out of range
Milton H Nelson L1 - KMG WELL - GYRO						Out of range
Milton Nelson K1 - KMG WELL - GYRO						Out of range
Nelson 1 - TEXAS TEA - NO SURVEYS						Out of range
Nelson 1-A - TEXAS TEA WELL - NO SURVEYS						Out of range
Nelson 2 - TEXAS TEA WELL - NO SURVEYS						Out of range
Nelson 3 - TEXAS TEA WELL - NO SURVEYS						Out of range
Nelson 4 - TEXAS TEA WELL - NO SURVEYS						Out of range
Nelson 5 - TEXAS TEA WELL - NO SURVEYS						Out of range

CC - Min centre to center distance or convergent point, SF - min separation factor, ES - min ellipse separation

Cathedral Energy Services

Anticollision Summary Report

Company:	Crestone Peak Resources	Local Co-ordinate Reference:	Well DREAM WEAVER South 3B-21H-N268 - Slot DREAM WEAVER South 3B-21H-N268 SHL
Project:	DJ BASIN	TVD Reference:	23' KB @ 4924.00usft (Original Well Elev)
Reference Site:	S21-T2N-R68W	MD Reference:	23' KB @ 4924.00usft (Original Well Elev)
Site Error:	0.00 usft	North Reference:	True
Reference Well:	DREAM WEAVER South 3B-21H-N268	Survey Calculation Method:	Minimum Curvature
Well Error:	0.00 usft	Output errors are at	2.00 sigma
Reference Wellbore	OH	Database:	USA EDM 5000 Multi Users DB
Reference Design:	PLAN #1	Offset TVD Reference:	Offset Datum

Summary						
Site Name Offset Well - Wellbore - Design	Reference Measured Depth (usft)	Offset Measured Depth (usft)	Distance Between Centres (usft)	Distance Between Ellipses (usft)	Separation Factor	Warning
S32-T2N-R68W						
Nelson D2 - KPK WELL - NO SURVEYS						Out of range
Nelson E Unit 1 - CPR WELL - GYRO						Out of range
Nelson E Unit 2 - CPR WELL - GYRO	18,267.97	7,544.14	1,870.66	1,690.68	10.394	CC
Nelson E Unit 2 - CPR WELL - GYRO	18,300.00	7,543.24	1,870.93	1,690.32	10.359	ES
Nelson E Unit 2 - CPR WELL - GYRO	18,500.00	7,537.67	1,884.98	1,701.54	10.276	SF
NOAA Federal 11-32 - CPR WELL - GYRO						Out of range
Osarkson 2-8-33 - CPR WELL - SURVEYS	19,364.34	7,734.57	826.78	629.86	4.199	CC, ES, SF
Oskarson 13-33 - CPR - GYRO	17,920.65	7,615.46	303.04	123.92	1.692	CC, ES, SF
Oskarson 23-33 - CPR WELL - GYRO	17,700.00	7,664.45	1,255.20	1,085.85	7.412	CC, ES, SF
Oskarson 4 - HRM - NO SURVEYS						Out of range
Oskarson 4-4-33 - CPR WELL - SURVEYS	17,300.00	8,106.82	1,916.93	1,729.52	10.229	SF
Oskarson 4-4-33 - CPR WELL - SURVEYS	17,367.62	8,106.02	1,915.73	1,728.68	10.242	CC, ES
Oskarson 4-6-33 - CPR WELL - SURVEYS	18,456.75	7,865.55	1,891.92	1,702.11	9.967	CC, ES
Oskarson 4-6-33 - CPR WELL - SURVEYS	18,500.00	7,865.61	1,892.41	1,702.39	9.959	SF
Oskarson 4-8-33 - CPR WELL - SURVEYS	19,364.34	7,915.80	1,905.50	1,703.93	9.453	CC, ES, SF
Oskarson E Unit 1 - CPR WELL - GYRO	18,895.44	7,603.96	191.63	1.95	1.010	Level 2, CC, ES, SF
Paquette 13-5 - KMG WELL - GYRO						Out of range
Paquette 14-5 - KERR-MCGEE - GYRO						Out of range
Rasmussen 10-29 - KMG WELL - SURVEYS						Out of range
Rasmussen 14-29 - KMG WELL - SURVEYS						Out of range
Rasmussen 16-29 - KMG WELL - SURVEYS	13,723.91	7,713.58	1,119.46	993.64	8.897	CC, ES
Rasmussen 16-29 - KMG WELL - SURVEYS	13,900.00	7,720.77	1,133.80	1,004.77	8.787	SF
Rasmussen 19-29 - KMG WELL - SURVEYS						Out of range
Rasmussen 20-29 - KMG WELL - SURVEYS	13,148.26	7,677.26	1,733.67	1,616.75	14.828	CC
Rasmussen 20-29 - KMG WELL - SURVEYS	13,200.00	7,677.03	1,734.44	1,616.41	14.694	ES
Rasmussen 20-29 - KMG WELL - SURVEYS	13,500.00	7,675.67	1,768.99	1,646.00	14.383	SF
Rasmussen 22-29 - KMG WELL - SURVEYS						Out of range
Rasmussen 23-29 - KMG WELL - SURVEYS						Out of range
Rasmussen 25-29 - KMG WELL - SURVEYS						Out of range
Rasmussen 36-29 - KMG WELL - SURVEYS						Out of range
Rasmussen 37-29 - KMG WELL - SURVEYS	14,296.09	7,736.83	1,650.13	1,514.89	12.201	CC
Rasmussen 37-29 - KMG WELL - SURVEYS	14,300.00	7,736.81	1,650.14	1,514.80	12.193	ES
Rasmussen 37-29 - KMG WELL - SURVEYS	14,600.00	7,735.29	1,677.89	1,537.16	11.923	SF
Rasmussen 39-29 - KMG WELL - SURVEYS	13,189.33	7,962.74	485.37	365.09	4.035	CC
Rasmussen 39-29 - KMG WELL - SURVEYS	13,200.00	7,962.79	485.49	364.66	4.018	ES
Rasmussen 39-29 - KMG WELL - SURVEYS	13,300.00	7,963.22	497.83	373.24	3.996	SF
Rasmussen Fed 35-29 - KMG WELL - SURVEYS						Out of range
Ray Nelson 0-4-32 - CPR WELL - SURVEYS						Out of range
Ray Nelson 12-32 - CPR WELL - GYRO						Out of range
Ray Nelson 13-32 - CPR WELL - SURVEYS						Out of range
Ray Nelson 14-32 - CPR WELL - SURVEYS						Out of range
Ray Nelson 23-32 - CPR WELL - GYRO						Out of range
Ray Nelson 24-32 - CPR WELL - SURVEYS						Out of range
Ray Nelson 2-4-32 - CPR WELL - SURVEYS						Out of range
Ray Nelson 33-32 - CPR WELL - SURVEYS						Out of range
Ray Nelson 34-32 - CPR WELL - SURVEYS						Out of range
Ray Nelson 44-32 - CPR WELL - SURVEYS	18,993.94	7,745.20	1,293.09	1,097.13	6.599	CC
Ray Nelson 44-32 - CPR WELL - SURVEYS	19,000.00	7,745.11	1,293.10	1,097.03	6.595	ES
Ray Nelson 44-32 - CPR WELL - SURVEYS	19,100.00	7,743.66	1,297.43	1,099.91	6.569	SF
Ray Nelson 4-4-32 - CPR WELL - SURVEYS						Out of range
Ray Nelson 4-6-32 - CPR WELL - SURVEYS						Out of range

CC - Min centre to center distance or convergent point, SF - min separation factor, ES - min ellipse separation

Cathedral Energy Services

Anticollision Summary Report

Company:	Crestone Peak Resources	Local Co-ordinate Reference:	Well DREAM WEAVER South 3B-21H-N268 - Slot DREAM WEAVER South 3B-21H-N268 SHL
Project:	DJ BASIN	TVD Reference:	23' KB @ 4924.00usft (Original Well Elev)
Reference Site:	S21-T2N-R68W	MD Reference:	23' KB @ 4924.00usft (Original Well Elev)
Site Error:	0.00 usft	North Reference:	True
Reference Well:	DREAM WEAVER South 3B-21H-N268	Survey Calculation Method:	Minimum Curvature
Well Error:	0.00 usft	Output errors are at	2.00 sigma
Reference Wellbore	OH	Database:	USA EDM 5000 Multi Users DB
Reference Design:	PLAN #1	Offset TVD Reference:	Offset Datum

Summary						
Site Name Offset Well - Wellbore - Design	Reference Measured Depth (usft)	Offset Measured Depth (usft)	Distance Between Centres (usft)	Distance Between Ellipses (usft)	Separation Factor	Warning
S32-T2N-R68W						
Ray Nelson 8-8-32 - CPR WELL - SURVEYS	19,364.34	7,906.71	867.88	673.06	4.455	CC, ES, SF
Regnier Farms 32-19 - CPR WELL - GYRO						Out of range
Regnier Farms 33-19 - CPR WELL - GYRO						Out of range
Regnier Farms 42-19 - CPR WELL - GYRO						Out of range
Regnier Farms 43-19 - CPR WELL - SURVEYS						Out of range
Regnier Farms B 2 - CPR WELL - GYRO						Out of range
Regnier Farms B Unit 1 - CPR WELL - GYRO						Out of range
Sawdey Unit 2 - KMG WELL - GYRO						Out of range
Schriner 11-5 - KMG WELL - GYRO						Out of range
Schriner 12-5 - KMG WELL - GYRO						Out of range
SEC Four 12-4 - KMG WELL - SURVEYS						Out of range
SEC Four 13-4 - KMG WELL - SURVEYS						Out of range
SEC Four 14-4 - KMG WELL - SURVEYS						Out of range
SEC Four 21-4 - KMG WELL - SURVEYS						Out of range
SEC Four 22-4 - KMG WELL - SURVEYS						Out of range
SEC Four 31-4 - KMG WELL - SURVEYS	19,364.34	7,792.98	1,870.82	1,779.87	20.570	CC, ES, SF
SEC Four 32-4 - KMG WELL - SURVEYS						Out of range
SEC Four 33-4 - KMG WELL - SURVEYS						Out of range
SEC Four 3-4 - KMG WELL - SURVEYS	19,364.34	7,781.86	1,681.47	1,515.27	10.117	CC, ES, SF
SEC Four 35-4 - KMG WELL - SURVEYS						Out of range
SEC Four 4-4 - KMG WELL - SURVEYS	19,364.34	7,733.72	1,193.92	1,142.38	23.166	CC, ES, SF
SEC Four 5-4 - KMG WELL - SURVEYS						Out of range
SEC Four 6-4 - KMG WELL - SURVEYS						Out of range
Shaw 11-29A - KMG WELL - SURVEYS						Out of range
Shaw 12-29A - KMG - GYRO						Out of range
Shaw 15-20 - KPK - SURVEYS						Out of range
Shaw 16-20 - KPK - SURVEYS	5,258.32	5,070.00	1,824.00	1,787.97	50.628	CC, ES
Shaw 16-20 - KPK - SURVEYS	5,400.00	5,070.00	1,829.49	1,793.05	50.206	SF
Tallgrass 1-8 - KMG - SURVEYS						Out of range
Tallgrass 2-8 - KMG - SURVEYS						Out of range
Tallgrass 3-8 - KMG - SURVEYS						Out of range
Tallgrass 4-8 - KMG - SURVEYS						Out of range
Tallgrass 5-8 - KMG - SURVEYS						Out of range
Tallgrass 6-8 - KMG WELL - SURVEYS						Out of range
Williams 10-20 - KMG WELL - SURVEYS						Out of range
Williams 11-20 - KMG WELL - SURVEYS						Out of range
Williams 13-20 - KMG WELL - SURVEYS						Out of range
Williams 14-20 - KMG WELL - SURVEYS						Out of range
Williams 16-20 - KMG WELL - SURVEYS	8,452.30	7,714.90	1,059.18	1,011.53	22.227	CC, ES
Williams 16-20 - KMG WELL - SURVEYS	8,500.00	7,715.77	1,060.26	1,012.55	22.225	SF
Williams 18-29 - KMG WELL - SURVEYS						Out of range
Williams 23-20 - KMG WELL - SURVEYS						Out of range
Williams 24-20 - KMG WELL - SURVEYS	7,229.98	7,192.32	2,159.88	2,114.30	47.394	CC, ES
Williams 24-20 - KMG WELL - SURVEYS	7,400.00	7,330.30	2,172.76	2,126.49	46.963	SF
Williams 24-20X - KMG WELL - SURVEYS	7,256.68	7,132.82	2,038.11	1,995.04	47.324	CC, ES
Williams 24-20X - KMG WELL - SURVEYS	7,500.00	7,349.79	2,060.07	2,016.12	46.875	SF
Williams 25-20 - KMG WELL - SURVEYS						Out of range
Williams 35-20 - KMG WELL - SURVEYS						Out of range
Williams 36-20 - KMG WELL - SURVEYS						Out of range
Williams 39-20 - KMG WELL - SURVEYS	7,891.74	7,712.44	471.78	429.94	11.275	CC, ES
Williams 39-20 - KMG WELL - SURVEYS	8,000.00	7,739.57	485.02	441.92	11.254	SF

CC - Min centre to center distance or convergent point, SF - min separation factor, ES - min ellipse separation

Cathedral Energy Services

Anticollision Summary Report

Company:	Crestone Peak Resources	Local Co-ordinate Reference:	Well DREAM WEAVER South 3B-21H-N268 - Slot DREAM WEAVER South 3B-21H-N268 SHL
Project:	DJ BASIN	TVD Reference:	23' KB @ 4924.00usft (Original Well Elev)
Reference Site:	S21-T2N-R68W	MD Reference:	23' KB @ 4924.00usft (Original Well Elev)
Site Error:	0.00 usft	North Reference:	True
Reference Well:	DREAM WEAVER South 3B-21H-N268	Survey Calculation Method:	Minimum Curvature
Well Error:	0.00 usft	Output errors are at	2.00 sigma
Reference Wellbore	OH	Database:	USA EDM 5000 Multi Users DB
Reference Design:	PLAN #1	Offset TVD Reference:	Offset Datum

Summary						
Site Name	Reference Measured Depth (usft)	Offset Measured Depth (usft)	Distance Between Centres (usft)	Distance Between Ellipses (usft)	Separation Factor	Warning
Offset Well - Wellbore - Design						
S32-T2N-R68W						
Williams 4-29 - KMG WELL - SURVEYS						Out of range
Williams 7-20 - KMG WELL - SURVEYS						Out of range
Williams 8-20 - KMG WELL - SURVEYS	7,119.24	7,324.01	2,151.01	2,095.45	38.715	CC, ES
Williams 8-20 - KMG WELL - SURVEYS	7,200.00	7,399.79	2,154.80	2,098.90	38.547	SF
Williams 9-20 - KMG WELL - SURVEYS	7,349.42	7,248.83	1,174.63	1,131.53	27.253	CC, ES
Williams 9-20 - KMG WELL - SURVEYS	7,600.00	7,415.58	1,203.96	1,158.68	26.590	SF
Woolley 41-7 - CPR WELL - GYRO						Out of range
Woolley 42-7 KPK - KPK WELL - SURVEYS						Out of range

Cathedral Energy Services

Anticollision Summary Report

Company:	Crestone Peak Resources	Local Co-ordinate Reference:	Well DREAM WEAVER South 3B-21H-N268 - Slot DREAM WEAVER South 3B-21H-N268 SHL
Project:	DJ BASIN	TVD Reference:	23' KB @ 4924.00usft (Original Well Elev)
Reference Site:	S21-T2N-R68W	MD Reference:	23' KB @ 4924.00usft (Original Well Elev)
Site Error:	0.00 usft	North Reference:	True
Reference Well:	DREAM WEAVER South 3B-21H-N268	Survey Calculation Method:	Minimum Curvature
Well Error:	0.00 usft	Output errors are at	2.00 sigma
Reference Wellbore	OH	Database:	USA EDM 5000 Multi Users DB
Reference Design:	PLAN #1	Offset TVD Reference:	Offset Datum

Summary						
Site Name	Reference Measured Depth (usft)	Offset Measured Depth (usft)	Distance Between Centres (usft)	Distance Between Ellipses (usft)	Separation Factor	Warning
Offset Well - Wellbore - Design						
S7-T1N-R68W (Woolley-S/B/Morgan Hills)						
BAILEY 8-8-1 (EXISTING) - CPR WELL - SURVEYS						Out of range
BEARDEN 0-6-6 (EXISTING) - CPR WELL - SURVEYS						Out of range
BEARDEN 1 (EXISTING) - CPR WELL - GYRO						Out of range
BEARDEN 13-6 (EXISTING) - CPR WELL - SURVEYS						Out of range
BEARDEN 14-6 (EXISTING) - CPR WELL - SURVEYS						Out of range
BEARDEN 23-6 (EXISTING) - ENCANA WELL - GYRO						Out of range
BEARDEN 24-6 (EXISTING) - CPR WELL - CPR WELL						Out of range
BEARDEN 2-4-6 (EXISTING) - CPR WELL - SURVEYS						Out of range
BEARDEN 2-8-6 (EXISTING) - CPR WELL - SURVEYS						Out of range
BECKY 1 (EXISTING) - FOUNDATION WELL - NO SUR						Out of range
BECKY 2-6 (EXISTING) - EXTRACTION WELL - GYRO						Out of range
BECKY 5-6 (EXISTING) - FOUNDATION WELL - NO SU						Out of range
BECKY 7-6 (EXISTING) - EXTRACTION WELL - GYRO						Out of range
BILLINGS 21-7 (EXISTING) - KPK WELL - SURVEYS						Out of range
BULTHAUP 10-6 (EXISTING) - KMG WELL - SURVEYS						Out of range
BULTHAUP 15-6 (EXISTING) - KMG WELL - GYRO						Out of range
BULTHAUP 17-6 (EXISTING) - KMG WELL - SURVEYS						Out of range
BULTHAUP 21-6 (EXISTING) - KMG WELL - SURVEYS						Out of range
BULTHAUP 23-6 (EXISTING) - KMG WELL - SURVEYS						Out of range
BULTHAUP 27-6 (EXISTING) - KMG WELL - SURVEYS						Out of range
CANYON CREEK 43-13 (EXISTING) - CPR WELL - SUR						Out of range
CANYON CREEK 8-6-13X (EXISTING) - CPR WELL - S						Out of range
CHAMPLIN-86-AMOCO 1 (EXISTING) - AMOCO - SURV						Out of range
COAL CREEK 6-0-19 (EXISTING) - CPR WELL - STK						Out of range
COAL CREEK 6-0-19 (EXISTING) - OH - SURVEYS						Out of range
COMMONS 28-19 (EXISTING) - KMG WELL - SURVEYS						Out of range
ERIE CHAMPLIN 18-9 (EXISTING) - EXISTING - SURVE						Out of range
ERIE CHAMPLIN B UNIT 1 - CPR WELL - GYRO						Out of range
ERIE CHAMPLIN B UNIT 2 - CPR WELL - GYRO						Out of range
I & J 7-6 (EXISTING) - KMG WELL - GYRO						Out of range
Morgan Hills 1A-7H-A168 - HZ - FINAL						Out of range
Morgan Hills 1B-7H-A168 - HZ - FINAL						Out of range
Morgan Hills 1C-7H-A168 - HZ - FINAL						Out of range
Morgan Hills 1D-7H-A168 - HZ - FINAL						Out of range
Morgan Hills 1E-7H-A168 - HZ - FINAL						Out of range
Morgan Hills 1F-7H-A168 - HZ - FINAL						Out of range
Morgan Hills 1G-7H-A168 - HZ - FINAL						Out of range
Morgan Hills 1H-7H-A168 - HZ - FINAL						Out of range
Morgan Hills 1I-7H-A168 - OH - FINAL						Out of range
SOSA 11-18 (EXISTING) - CPR WELL - SURVEYS						Out of range
SOSA 12-18 (EXISTING) - CPR WELL - SURVEYS						Out of range
SOSA 21-18 (EXISTING) - CPR WELL - SURVEYS						Out of range
SOSA 22-18 (EXISTING) - CPR WELL - SURVEYS						Out of range
SOSA A UNIT 1 (EXISTING) - CPR WELL - GYRO						Out of range
TALLGRASS 33-17 (EXISTING) - KMG WELL - SURVEY						Out of range
THOMAS 14-7(EXISTING) - CPR WELL - SURVEYS						Out of range
THOMAS 24-7 (EXISTING) - CPR WELL - SURVEYS						Out of range
THOMAS 2-8-7 (EXISTING) - CPR WELL - SURVEYS						Out of range
THOMAS 33-7 (EXISTING) - CPR WELL - SURVEYS						Out of range
THOMAS 7-12 (EXISTING) - CPR WELL - GYRO						Out of range
Thomas 7-14 (AL) - Existing - NO SURVEYS						Out of range

CC - Min centre to center distance or convergent point, SF - min separation factor, ES - min ellipse separation

Cathedral Energy Services

Anticollision Summary Report

Company:	Crestone Peak Resources	Local Co-ordinate Reference:	Well DREAM WEAVER South 3B-21H-N268 - Slot DREAM WEAVER South 3B-21H-N268 SHL
Project:	DJ BASIN	TVD Reference:	23' KB @ 4924.00usft (Original Well Elev)
Reference Site:	S21-T2N-R68W	MD Reference:	23' KB @ 4924.00usft (Original Well Elev)
Site Error:	0.00 usft	North Reference:	True
Reference Well:	DREAM WEAVER South 3B-21H-N268	Survey Calculation Method:	Minimum Curvature
Well Error:	0.00 usft	Output errors are at	2.00 sigma
Reference Wellbore	OH	Database:	USA EDM 5000 Multi Users DB
Reference Design:	PLAN #1	Offset TVD Reference:	Offset Datum

Summary						
Site Name	Reference Measured Depth (usft)	Offset Measured Depth (usft)	Distance Between Centres (usft)	Distance Between Ellipses (usft)	Separation Factor	Warning
Offset Well - Wellbore - Design						
S7-T1N-R68W (Woolley-S/B/Morgan Hills)						
THOMAS E UNIT 1 (EXISTING) - CPR WELL - GYRO						Out of range
THOMAS E UNIT 2 - VESSELS WELL - INC ONLY						Out of range
THOMAS K UNIT 1 (EXISTING) - EXISTING - NO SURV						Out of range
WHEELER G UNIT 1 - CPR - GYRO						Out of range
WIGGETT 13-1 - CPR - GYRO						Out of range
WIGGETT 8-2-13 (EXISTING) - CPR WELL - SURVEYS						Out of range
WOOLLEY 11-7 (EXISTING) - CPR WELL - SURVEYS						Out of range
WOOLLEY 12-7 (EXISTING) - CPR WELL - GYRO						Out of range
WOOLLEY 21-7 (EXISTING) - CPR WELL - GYRO						Out of range
WOOLLEY 22-7 (EXISTING) - CPR WELL - SURVEYS						Out of range
WOOLLEY 2-4-7 (EXISTING) - CPR WELL - SURVEYS						Out of range
WOOLLEY 4-0-7 (EXISTING) - CPR WELL - SURVEYS						Out of range
WOOLLEY 41-7 (EXISTING) - CPR WELL - GYRO						Out of range
WOOLLEY 42-7 (EXISTING) - CPR WELL - GYRO						Out of range
WOOLLEY 42-7 KPK (EXISTING) - KPK WELL - SURVE						Out of range
WOOLLEY A 1-7 (EXISTING) - CPR WELL - GYRO						Out of range
WOOLLEY F UNIT 1 (EXISTING) - CPR WELL - GYRO						Out of range
Woolley-Becky 2A-7H-E168 - Hz - FINAL						Out of range
Woolley-Becky 2B-7H-E168 - Hz - FINAL						Out of range
Woolley-Becky 2C-7H-E168 - Hz - FINAL						Out of range
Woolley-Becky 2D-7H-E168 - Hz - FINAL						Out of range
Woolley-Becky 2E-7H-E168 - Hz - FINAL						Out of range
Woolley-Becky 2F-7H-E168 - Hz - FINAL						Out of range
Woolley-Becky 2G-7H-E168 - Hz - FINAL						Out of range
Woolley-Becky 2H-7H-E168 - Hz - FINAL						Out of range
Woolley-Sosa 2A-7H-E168 - OH - FINAL						Out of range
Woolley-Sosa 2B-7H-E168 - HZ - FINAL						Out of range
Woolley-Sosa 2C-7H-E168 - HZ - FINAL						Out of range
Woolley-Sosa 2D-7H-E168 - HZ - FINAL						Out of range
Woolley-Sosa 2E-7H-E168 - HZ - FINAL						Out of range
Woolley-Sosa 2F-7H-E168 - HZ - FINAL						Out of range
Woolley-Sosa 2G-7H-E168 - HZ - FINAL						Out of range

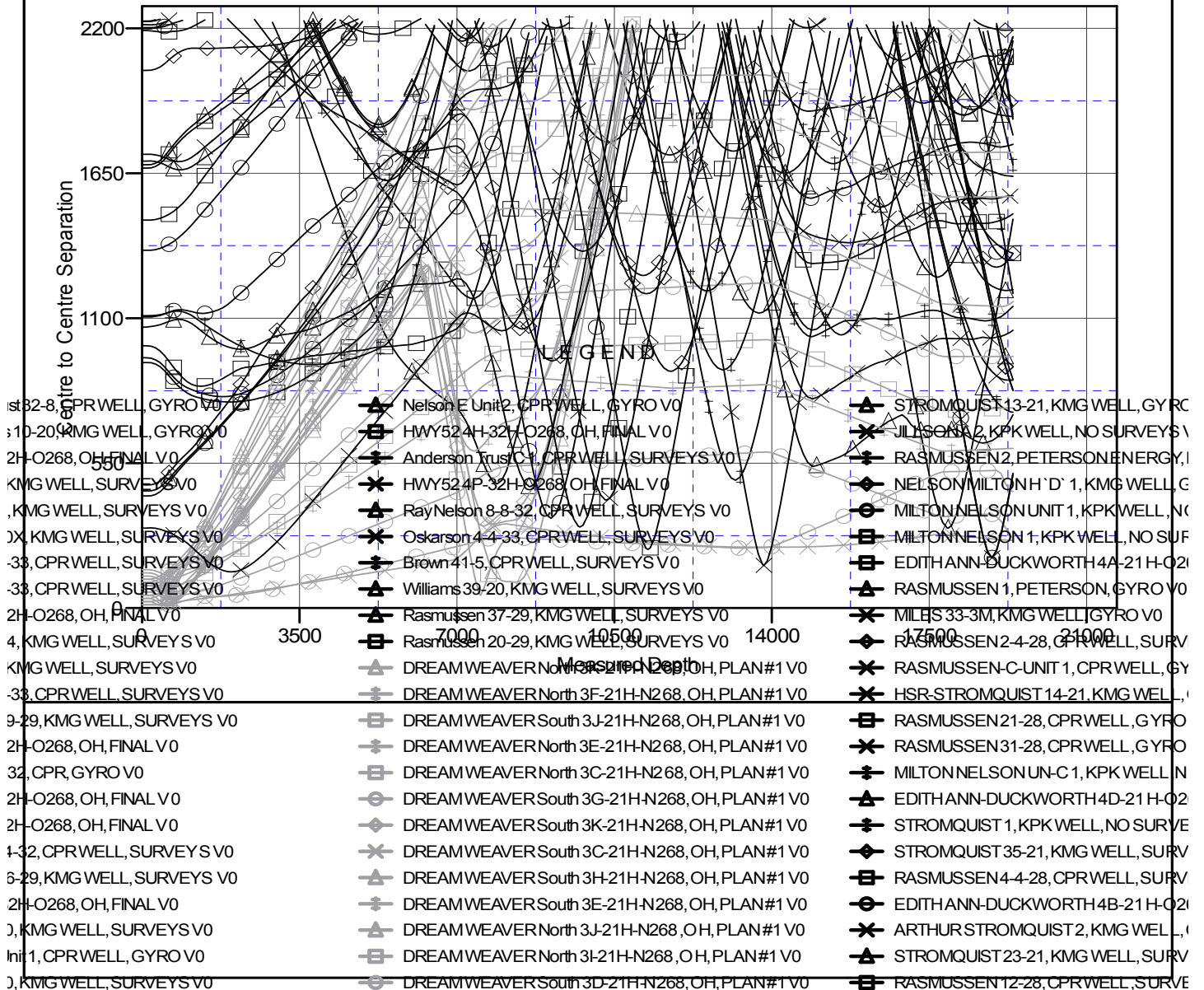
Cathedral Energy Services
Anticollision Summary Report

Company:	Crestone Peak Resources	Local Co-ordinate Reference:	Well DREAM WEAVER South 3B-21H-N268 - Slot DREAM WEAVER South 3B-21H-N268 SHL
Project:	DJ BASIN	TVD Reference:	23' KB @ 4924.00usft (Original Well Elev)
Reference Site:	S21-T2N-R68W	MD Reference:	23' KB @ 4924.00usft (Original Well Elev)
Site Error:	0.00 usft	North Reference:	True
Reference Well:	DREAM WEAVER South 3B-21H-N268	Survey Calculation Method:	Minimum Curvature
Well Error:	0.00 usft	Output errors are at	2.00 sigma
Reference Wellbore	OH	Database:	USA EDM 5000 Multi Users DB
Reference Design:	PLAN #1	Offset TVD Reference:	Offset Datum

Reference Depths are relative to 23' KB @ 4924.00usft (Original Well E
Offset Depths are relative to Offset Datum
Central Meridian is -105.500000

Coordinates are relative to: DREAM WEAVER South 3B-21H-N268 - Slot DREAM
Coordinate System is US State Plane 1983, Colorado Northern Zone
Grid Convergence at Surface is: 0.32°

Ladder Plot



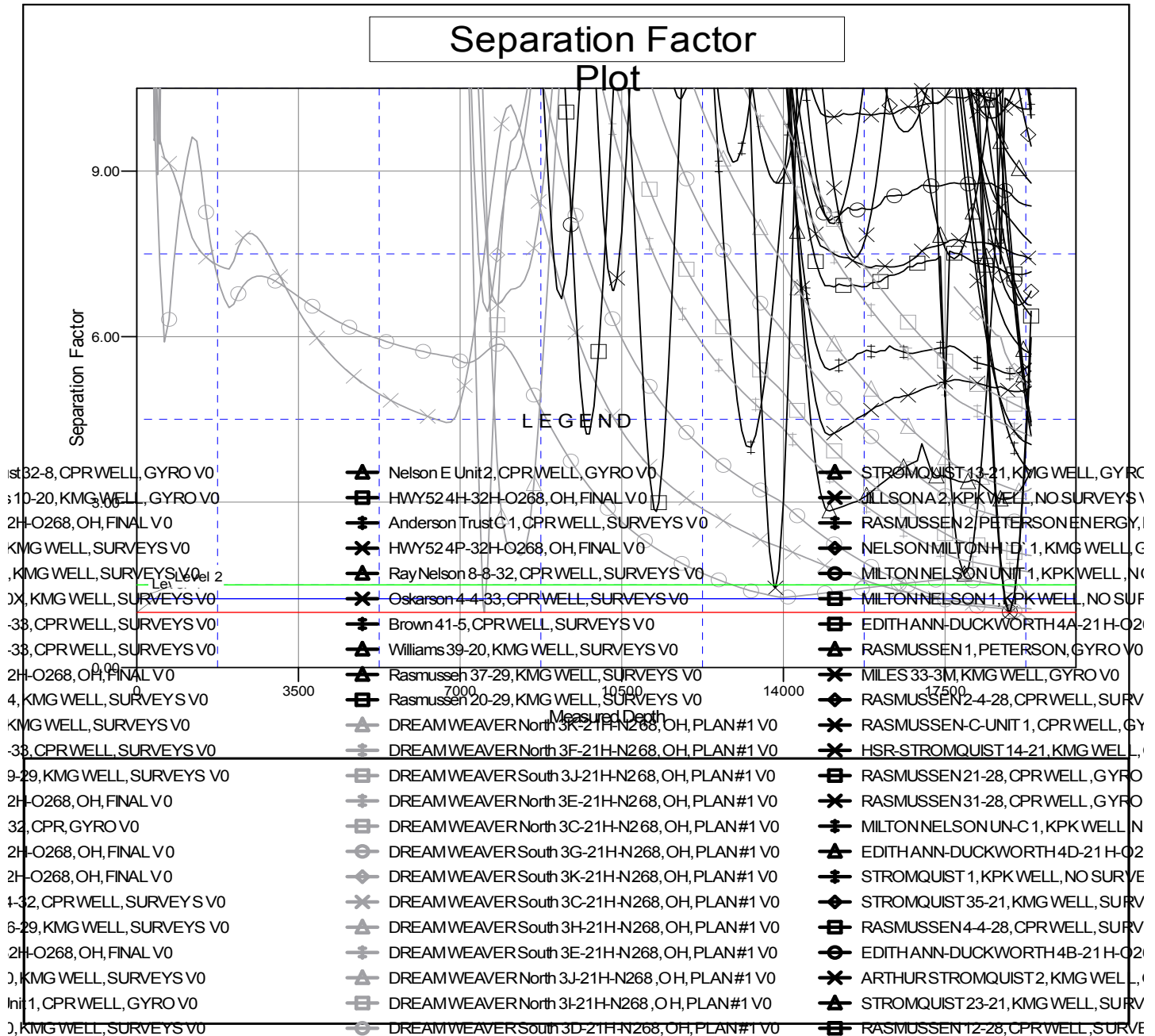
CC - Min centre to center distance or convergent point, SF - min separation factor, ES - min ellipse separation

Cathedral Energy Services
Anticollision Summary Report

Company:	Crestone Peak Resources	Local Co-ordinate Reference:	Well DREAM WEAVER South 3B-21H-N268 - Slot DREAM WEAVER South 3B-21H-N268 SHL
Project:	DJ BASIN	TVD Reference:	23' KB @ 4924.00usft (Original Well Elev)
Reference Site:	S21-T2N-R68W	MD Reference:	23' KB @ 4924.00usft (Original Well Elev)
Site Error:	0.00 usft	North Reference:	True
Reference Well:	DREAM WEAVER South 3B-21H-N268	Survey Calculation Method:	Minimum Curvature
Well Error:	0.00 usft	Output errors are at	2.00 sigma
Reference Wellbore	OH	Database:	USA EDM 5000 Multi Users DB
Reference Design:	PLAN #1	Offset TVD Reference:	Offset Datum

Reference Depths are relative to 23' KB @ 4924.00usft (Original Well E
Offset Depths are relative to Offset Datum
Central Meridian is -105.500000

Coordinates are relative to: DREAM WEAVER South 3B-21H-N268 - Slot DREAM
Coordinate System is US State Plane 1983, Colorado Northern Zone
Grid Convergence at Surface is: 0.32°



CC - Min centre to center distance or convergent point, SF - min separation factor, ES - min ellipse separation