

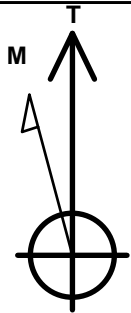
Magpie Operating, Inc.

Well Name: **Campion 5-6 1H**

Surface Location: Campion Pad Sec.5-T4N-R68W
 North American Datum 1983 , US State Plane 1983, Colorado Northern Zone
 Ground Elevation: 5068.0
 +N/-S +E/-W Northing Easting Latitude Longitude Slot
 0.0 0.0 1370042.36 3130758.98 40.348218 -105.030862
 Original Well Elev WELL @ 5084.0ft (Original Well Elev)

WELLBORE TARGET DETAILS

Name	TVD	+N/-S	+E/-W	Shape
SHL 386'FNL, 1880'FWL, SEC.5	1.0	0.0	0.0	Point
BHL 0'FNL, 1924'FWL, SEC.6	4583.0	391.8	-5282.8	Point
LPL 0'FNL, 1934'FEL, SEC.5	5101.0	382.9	1457.2	Point



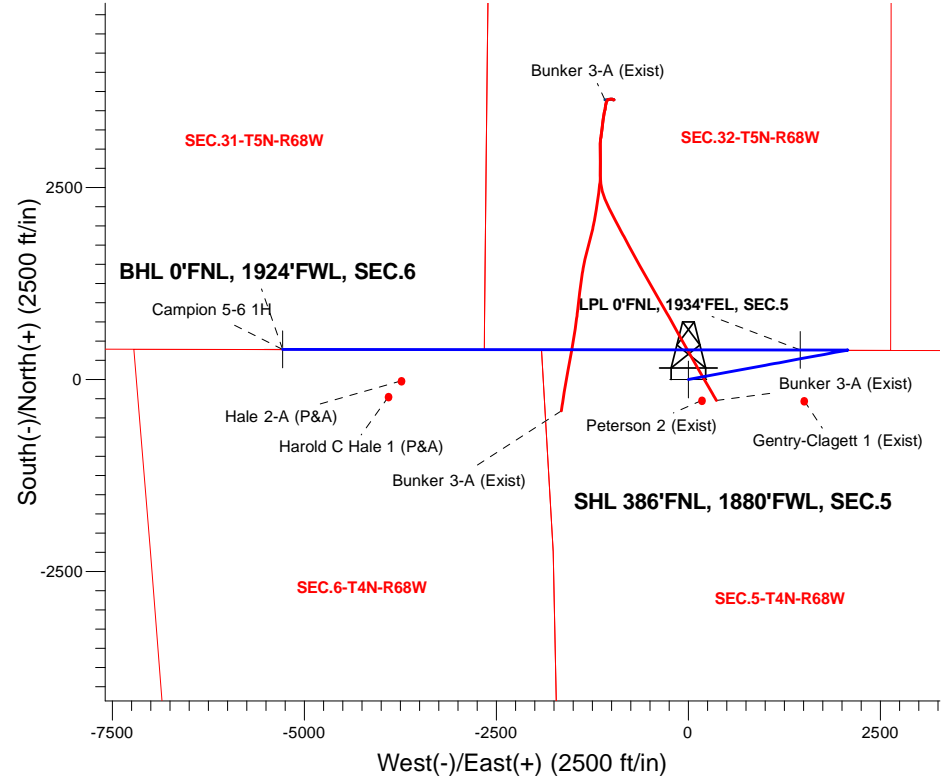
Azimuths to True North
 Magnetic North: -99639.00°

Magnetic Field
 Strength: -99999.0snT
 Dip Angle: -99999.00°
 Date: 4/5/2018
 Model: HDGM

Campion Pad Sec.5-T4N-R68W
 Campion 5-6 1H
 Plan #1 (4-05-18)
 10:25, April 05 2018

ANNOTATIONS

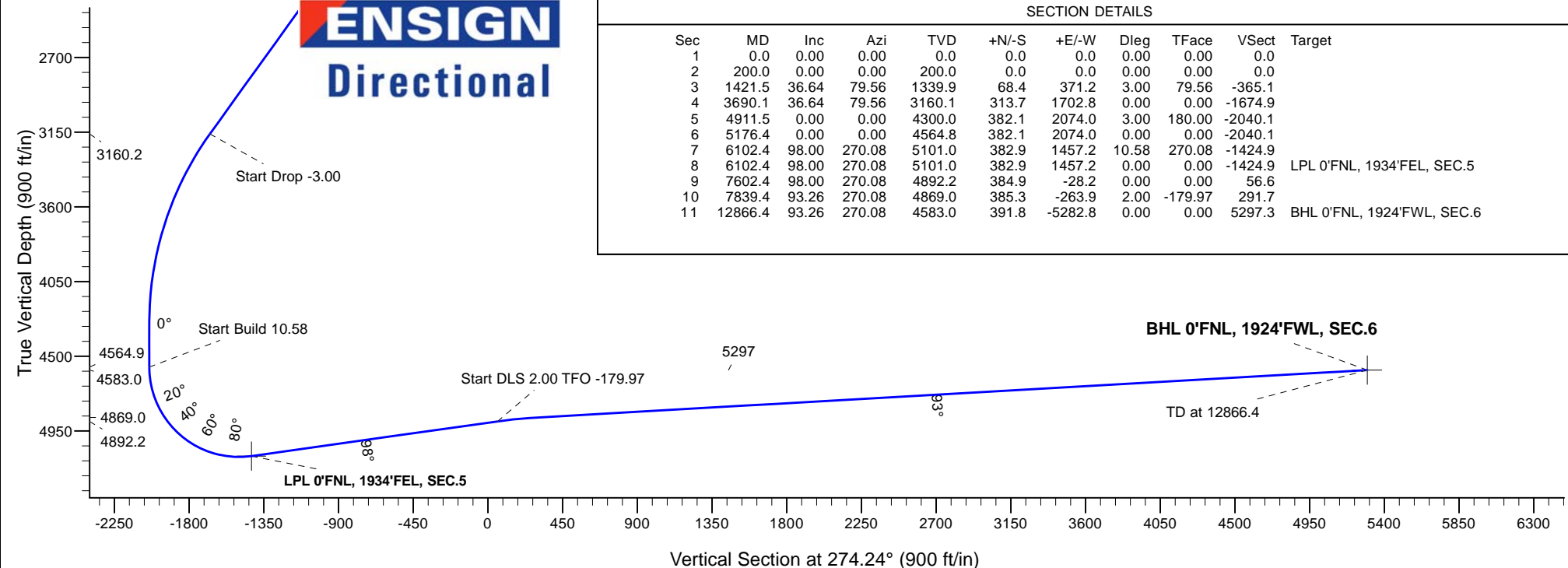
TVD	MD	Annotation
200.0	200.0	KOP - Start Build 3.00
3160.2	3690.1	Start Drop -3.00
4564.9	5176.4	Start Build 10.58
4892.2	7602.4	Start DLS 2.00 TFO -179.97
4869.0	7839.4	Start 5027.0 hold at 7839.4 MD
4583.0	12866.4	TD at 12866.4



ENSIGN
 Directional

SECTION DETAILS

Sec	MD	Inc	Azi	TVD	+N/-S	+E/-W	Dleg	TFace	VSec	Target
1	0.0	0.00	0.00	0.0	0.0	0.0	0.00	0.00	0.0	
2	200.0	0.00	0.00	200.0	0.0	0.0	0.00	0.00	0.0	
3	1421.5	36.64	79.56	1339.9	68.4	371.2	3.00	79.56	-365.1	
4	3690.1	36.64	79.56	3160.1	313.7	1702.8	0.00	0.00	-1674.9	
5	4911.5	0.00	0.00	4300.0	382.1	2074.0	3.00	180.00	-2040.1	
6	5176.4	0.00	0.00	4564.8	382.1	2074.0	0.00	0.00	-2040.1	
7	6102.4	98.00	270.08	5101.0	382.9	1457.2	10.58	270.08	-1424.9	
8	6102.4	98.00	270.08	5101.0	382.9	1457.2	0.00	0.00	-1424.9	LPL 0'FNL, 1934'FEL, SEC.5
9	7602.4	98.00	270.08	4892.2	384.9	-28.2	0.00	0.00	56.6	
10	7839.4	93.26	270.08	4869.0	385.3	-263.9	2.00	-179.97	291.7	
11	12866.4	93.26	270.08	4583.0	391.8	-5282.8	0.00	0.00	5297.3	BHL 0'FNL, 1924'FWL, SEC.6





Magpie Operating, Inc.

SEC.5-T4N-R68W

Campion Pad Sec.5-T4N-R68W

Campion 5-6 1H

Wellbore #1

Plan: Plan #1 (4-05-18)

Standard Planning Report

05 April, 2018

Database:	US_EDM	Local Co-ordinate Reference:	Well Campion 5-6 1H
Company:	Magpie Operating, Inc.	TVD Reference:	WELL @ 5084.0ft (Original Well Elev)
Project:	SEC.5-T4N-R68W	MD Reference:	WELL @ 5084.0ft (Original Well Elev)
Site:	Campion Pad Sec.5-T4N-R68W	North Reference:	True
Well:	Campion 5-6 1H	Survey Calculation Method:	Minimum Curvature
Wellbore:	Wellbore #1		
Design:	Plan #1 (4-05-18)		

Project	SEC.5-T4N-R68W, Weld County, CO		
Map System:	US State Plane 1983	System Datum:	Mean Sea Level
Geo Datum:	North American Datum 1983		Using Well Reference Point
Map Zone:	Colorado Northern Zone		Using geodetic scale factor

Site		Campion Pad Sec.5-T4N-R68W			
Site Position:		Northing:	1,370,042.37 usft	Latitude:	40.348218
From:	Lat/Long	Easting:	3,130,758.98 usft	Longitude:	-105.030862
Position Uncertainty:	0.0 ft	Slot Radius:	13-3/16 "	Grid Convergence:	0.30

Well	Campion 5-6 1H					
Well Position	+N/-S	0.0 ft	Northing:	1,370,042.36 usft	Latitude:	40.348218
	+E/-W	0.0 ft	Easting:	3,130,758.98 usft	Longitude:	-105.030862
Position Uncertainty		0.0 ft	Wellhead Elevation:	0.0 ft	Ground Level:	5,068.0 ft

Wellbore	Wellbore #1				
Magnetics	Model Name	Sample Date	Declination (°)	Dip Angle (°)	Field Strength (nT)
	HDGM	4/5/2018	-99,639.00	-99,999.00	-99,999

Design	Plan #1 (4-05-18)			
Audit Notes:				
Version:	Phase:	PROTOTYPE	Tie On Depth:	0.0
Vertical Section:	Depth From (TVD) (ft)	+N/-S (ft)	+E/-W (ft)	Direction (°)
	0.0	0.0	0.0	274.24

Plan Sections										
Measured Depth (ft)	Inclination (°)	Azimuth (°)	Vertical Depth (ft)	+N/-S (ft)	+E/-W (ft)	Dogleg Rate (°/100usft)	Build Rate (°/100usft)	Turn Rate (°/100usft)	TFO (°)	Target
0.0	0.00	0.00	0.0	0.0	0.0	0.00	0.00	0.00	0.00	
200.0	0.00	0.00	200.0	0.0	0.0	0.00	0.00	0.00	0.00	
1,421.5	36.64	79.56	1,339.9	68.4	371.2	3.00	3.00	0.00	79.56	
3,690.1	36.64	79.56	3,160.1	313.7	1,702.8	0.00	0.00	0.00	0.00	
4,911.5	0.00	0.00	4,300.0	382.1	2,074.0	3.00	-3.00	0.00	180.00	
5,176.4	0.00	0.00	4,564.8	382.1	2,074.0	0.00	0.00	0.00	0.00	
6,102.4	98.00	270.08	5,101.0	382.9	1,457.2	10.58	10.58	0.00	270.08	
6,102.4	98.00	270.08	5,101.0	382.9	1,457.2	0.00	0.00	0.00	0.00	LPL 0'FNL, 1934'FEL,
7,602.4	98.00	270.08	4,892.2	384.9	-28.2	0.00	0.00	0.00	0.00	
7,839.4	93.26	270.08	4,869.0	385.3	-263.9	2.00	-2.00	0.00	-179.97	
12,866.4	93.26	270.08	4,583.0	391.8	-5,282.8	0.00	0.00	0.00	0.00	BHL 0'FNL, 1924'FWI

Database:	US_EDM	Local Co-ordinate Reference:	Well Campion 5-6 1H
Company:	Magpie Operating, Inc.	TVD Reference:	WELL @ 5084.0ft (Original Well Elev)
Project:	SEC.5-T4N-R68W	MD Reference:	WELL @ 5084.0ft (Original Well Elev)
Site:	Campion Pad Sec.5-T4N-R68W	North Reference:	True
Well:	Campion 5-6 1H	Survey Calculation Method:	Minimum Curvature
Wellbore:	Wellbore #1		
Design:	Plan #1 (4-05-18)		

Planned Survey									
Measured Depth (ft)	Inclination (°)	Azimuth (°)	Vertical Depth (ft)	+N/-S (ft)	+E/-W (ft)	Vertical Section (ft)	Dogleg Rate (°/100usft)	Build Rate (°/100usft)	Turn Rate (°/100usft)
0.0	0.00	0.00	0.0	0.0	0.0	0.0	0.00	0.00	0.00
1.0	0.00	0.00	1.0	0.0	0.0	0.0	0.00	0.00	0.00
SHL 386'FNL, 1880'FWL, SEC.5									
100.0	0.00	0.00	100.0	0.0	0.0	0.0	0.00	0.00	0.00
200.0	0.00	0.00	200.0	0.0	0.0	0.0	0.00	0.00	0.00
KOP - Start Build 3.00									
300.0	3.00	79.56	300.0	0.5	2.6	-2.5	3.00	3.00	0.00
400.0	6.00	79.56	399.6	1.9	10.3	-10.1	3.00	3.00	0.00
500.0	9.00	79.56	498.8	4.3	23.1	-22.7	3.00	3.00	0.00
600.0	12.00	79.56	597.1	7.6	41.0	-40.4	3.00	3.00	0.00
700.0	15.00	79.56	694.3	11.8	64.0	-63.0	3.00	3.00	0.00
800.0	18.00	79.56	790.2	16.9	91.9	-90.4	3.00	3.00	0.00
900.0	21.00	79.56	884.4	23.0	124.8	-122.7	3.00	3.00	0.00
1,000.0	24.00	79.56	976.8	29.9	162.4	-159.7	3.00	3.00	0.00
1,100.0	27.00	79.56	1,067.1	37.7	204.7	-201.4	3.00	3.00	0.00
1,200.0	30.00	79.56	1,154.9	46.4	251.6	-247.5	3.00	3.00	0.00
1,300.0	33.00	79.56	1,240.2	55.8	303.0	-298.1	3.00	3.00	0.00
1,400.0	36.00	79.56	1,322.6	66.1	358.7	-352.8	3.00	3.00	0.00
1,421.5	36.64	79.56	1,339.9	68.4	371.2	-365.1	3.00	3.00	0.00
1,500.0	36.64	79.56	1,402.9	76.9	417.3	-410.5	0.00	0.00	0.00
1,600.0	36.64	79.56	1,483.1	87.7	476.0	-468.2	0.00	0.00	0.00
1,700.0	36.64	79.56	1,563.4	98.5	534.7	-526.0	0.00	0.00	0.00
1,800.0	36.64	79.56	1,643.6	109.3	593.4	-583.7	0.00	0.00	0.00
1,900.0	36.64	79.56	1,723.8	120.1	652.1	-641.4	0.00	0.00	0.00
2,000.0	36.64	79.56	1,804.1	131.0	710.8	-699.2	0.00	0.00	0.00
2,100.0	36.64	79.56	1,884.3	141.8	769.5	-756.9	0.00	0.00	0.00
2,200.0	36.64	79.56	1,964.6	152.6	828.2	-814.6	0.00	0.00	0.00
2,300.0	36.64	79.56	2,044.8	163.4	886.9	-872.4	0.00	0.00	0.00
2,400.0	36.64	79.56	2,125.0	174.2	945.6	-930.1	0.00	0.00	0.00
2,500.0	36.64	79.56	2,205.3	185.0	1,004.3	-987.8	0.00	0.00	0.00
2,600.0	36.64	79.56	2,285.5	195.8	1,063.0	-1,045.6	0.00	0.00	0.00
2,700.0	36.64	79.56	2,365.7	206.6	1,121.7	-1,103.3	0.00	0.00	0.00
2,800.0	36.64	79.56	2,446.0	217.5	1,180.4	-1,161.0	0.00	0.00	0.00
2,900.0	36.64	79.56	2,526.2	228.3	1,239.1	-1,218.8	0.00	0.00	0.00
3,000.0	36.64	79.56	2,606.4	239.1	1,297.7	-1,276.5	0.00	0.00	0.00
3,100.0	36.64	79.56	2,686.7	249.9	1,356.4	-1,334.2	0.00	0.00	0.00
3,200.0	36.64	79.56	2,766.9	260.7	1,415.1	-1,392.0	0.00	0.00	0.00
3,300.0	36.64	79.56	2,847.2	271.5	1,473.8	-1,449.7	0.00	0.00	0.00
3,400.0	36.64	79.56	2,927.4	282.3	1,532.5	-1,507.4	0.00	0.00	0.00
3,500.0	36.64	79.56	3,007.6	293.2	1,591.2	-1,565.2	0.00	0.00	0.00
3,600.0	36.64	79.56	3,087.9	304.0	1,649.9	-1,622.9	0.00	0.00	0.00
3,690.1	36.64	79.56	3,160.2	313.7	1,702.8	-1,674.9	0.00	0.00	0.00
Start Drop -3.00									
3,700.0	36.35	79.56	3,168.1	314.8	1,708.6	-1,680.6	3.01	-3.01	0.00
3,800.0	33.35	79.56	3,250.2	325.1	1,764.8	-1,735.9	3.00	-3.00	0.00
3,900.0	30.35	79.56	3,335.1	334.7	1,816.7	-1,786.9	3.00	-3.00	0.00
4,000.0	27.35	79.56	3,422.7	343.4	1,864.1	-1,833.6	3.00	-3.00	0.00
4,100.0	24.35	79.56	3,512.7	351.3	1,907.0	-1,875.8	3.00	-3.00	0.00
4,200.0	21.35	79.56	3,604.8	358.4	1,945.2	-1,913.3	3.00	-3.00	0.00
4,300.0	18.35	79.56	3,698.9	364.5	1,978.5	-1,946.2	3.00	-3.00	0.00
4,400.0	15.35	79.56	3,794.6	369.8	2,007.0	-1,974.2	3.00	-3.00	0.00
4,500.0	12.35	79.56	3,891.7	374.1	2,030.6	-1,997.3	3.00	-3.00	0.00
4,600.0	9.35	79.56	3,989.9	377.5	2,049.1	-2,015.5	3.00	-3.00	0.00

Database:	US_EDM	Local Co-ordinate Reference:	Well Campion 5-6 1H
Company:	Magpie Operating, Inc.	TVD Reference:	WELL @ 5084.0ft (Original Well Elev)
Project:	SEC.5-T4N-R68W	MD Reference:	WELL @ 5084.0ft (Original Well Elev)
Site:	Campion Pad Sec.5-T4N-R68W	North Reference:	True
Well:	Campion 5-6 1H	Survey Calculation Method:	Minimum Curvature
Wellbore:	Wellbore #1		
Design:	Plan #1 (4-05-18)		

Planned Survey									
Measured Depth (ft)	Inclination (°)	Azimuth (°)	Vertical Depth (ft)	+N/-S (ft)	+E/-W (ft)	Vertical Section (ft)	Dogleg Rate (°/100usft)	Build Rate (°/100usft)	Turn Rate (°/100usft)
4,700.0	6.35	79.56	4,088.9	380.0	2,062.5	-2,028.7	3.00	-3.00	0.00
4,800.0	3.35	79.56	4,188.5	381.5	2,070.8	-2,036.9	3.00	-3.00	0.00
4,900.0	0.35	79.56	4,288.5	382.1	2,074.0	-2,040.0	3.00	-3.00	0.00
4,911.5	0.00	0.00	4,300.0	382.1	2,074.0	-2,040.1	3.00	-3.00	0.00
5,000.0	0.00	0.00	4,388.5	382.1	2,074.0	-2,040.1	0.00	0.00	0.00
5,100.0	0.00	0.00	4,488.5	382.1	2,074.0	-2,040.1	0.00	0.00	0.00
5,176.4	0.00	0.00	4,564.9	382.1	2,074.0	-2,040.1	0.00	0.00	0.00
Start Build 10.58									
5,200.0	2.50	270.08	4,588.5	382.1	2,073.5	-2,039.5	10.60	10.60	0.00
5,300.0	13.08	270.08	4,687.4	382.1	2,059.9	-2,026.0	10.58	10.58	0.00
5,400.0	23.67	270.08	4,782.2	382.2	2,028.5	-1,994.6	10.58	10.58	0.00
5,500.0	34.25	270.08	4,869.5	382.2	1,980.1	-1,946.4	10.58	10.58	0.00
5,600.0	44.83	270.08	4,946.6	382.3	1,916.5	-1,883.0	10.58	10.58	0.00
5,700.0	55.41	270.08	5,010.6	382.4	1,839.9	-1,806.6	10.58	10.58	0.00
5,800.0	66.00	270.08	5,059.4	382.5	1,752.8	-1,719.7	10.58	10.58	0.00
5,900.0	76.58	270.08	5,091.5	382.7	1,658.2	-1,625.4	10.58	10.58	0.00
6,000.0	87.16	270.08	5,105.6	382.8	1,559.4	-1,526.8	10.58	10.58	0.00
6,100.0	97.74	270.08	5,101.3	382.9	1,459.6	-1,427.3	10.58	10.58	0.00
6,102.4	98.00	270.08	5,101.0	382.9	1,457.2	-1,424.9	10.58	10.58	0.00
LPL 0°FNL, 1934°FEL, SEC.5									
6,200.0	98.00	270.08	5,087.4	383.1	1,360.6	-1,328.5	0.00	0.00	0.00
6,300.0	98.00	270.08	5,073.5	383.2	1,261.6	-1,229.8	0.00	0.00	0.00
6,400.0	98.00	270.08	5,059.6	383.3	1,162.5	-1,131.0	0.00	0.00	0.00
6,500.0	98.00	270.08	5,045.7	383.5	1,063.5	-1,032.2	0.00	0.00	0.00
6,600.0	98.00	270.08	5,031.8	383.6	964.5	-933.5	0.00	0.00	0.00
6,700.0	98.00	270.08	5,017.8	383.7	865.5	-834.7	0.00	0.00	0.00
6,800.0	98.00	270.08	5,003.9	383.9	766.4	-735.9	0.00	0.00	0.00
6,900.0	98.00	270.08	4,990.0	384.0	667.4	-637.2	0.00	0.00	0.00
7,000.0	98.00	270.08	4,976.1	384.1	568.4	-538.4	0.00	0.00	0.00
7,100.0	98.00	270.08	4,962.2	384.3	469.4	-439.6	0.00	0.00	0.00
7,200.0	98.00	270.08	4,948.2	384.4	370.3	-340.9	0.00	0.00	0.00
7,300.0	98.00	270.08	4,934.3	384.5	271.3	-242.1	0.00	0.00	0.00
7,400.0	98.00	270.08	4,920.4	384.7	172.3	-143.4	0.00	0.00	0.00
7,500.0	98.00	270.08	4,906.5	384.8	73.3	-44.6	0.00	0.00	0.00
7,600.0	98.00	270.08	4,892.6	384.9	-25.8	54.2	0.00	0.00	0.00
7,602.4	98.00	270.08	4,892.2	384.9	-28.2	56.5	0.00	0.00	0.00
Start DLS 2.00 TFO -179.97									
7,700.0	96.05	270.08	4,880.3	385.1	-125.0	153.2	2.00	-2.00	0.00
7,800.0	94.05	270.08	4,871.5	385.2	-224.6	252.5	2.00	-2.00	0.00
7,839.4	93.26	270.08	4,869.0	385.3	-263.9	291.7	2.00	-2.00	0.00
Start 5027.0 hold at 7839.4 MD									
7,900.0	93.26	270.08	4,865.6	385.3	-324.4	352.1	0.00	0.00	0.00
8,000.0	93.26	270.08	4,859.9	385.5	-424.3	451.6	0.00	0.00	0.00
8,100.0	93.26	270.08	4,854.2	385.6	-524.1	551.2	0.00	0.00	0.00
8,200.0	93.26	270.08	4,848.5	385.7	-624.0	650.8	0.00	0.00	0.00
8,300.0	93.26	270.08	4,842.8	385.9	-723.8	750.4	0.00	0.00	0.00
8,400.0	93.26	270.08	4,837.1	386.0	-823.6	849.9	0.00	0.00	0.00
8,500.0	93.26	270.08	4,831.4	386.1	-923.5	949.5	0.00	0.00	0.00
8,600.0	93.26	270.08	4,825.7	386.3	-1,023.3	1,049.1	0.00	0.00	0.00
8,700.0	93.26	270.08	4,820.0	386.4	-1,123.1	1,148.7	0.00	0.00	0.00
8,800.0	93.26	270.08	4,814.3	386.5	-1,223.0	1,248.2	0.00	0.00	0.00
8,900.0	93.26	270.08	4,808.7	386.6	-1,322.8	1,347.8	0.00	0.00	0.00
9,000.0	93.26	270.08	4,803.0	386.8	-1,422.7	1,447.4	0.00	0.00	0.00
9,100.0	93.26	270.08	4,797.3	386.9	-1,522.5	1,546.9	0.00	0.00	0.00

Database:	US_EDM	Local Co-ordinate Reference:	Well Campion 5-6 1H
Company:	Magpie Operating, Inc.	TVD Reference:	WELL @ 5084.0ft (Original Well Elev)
Project:	SEC.5-T4N-R68W	MD Reference:	WELL @ 5084.0ft (Original Well Elev)
Site:	Campion Pad Sec.5-T4N-R68W	North Reference:	True
Well:	Campion 5-6 1H	Survey Calculation Method:	Minimum Curvature
Wellbore:	Wellbore #1		
Design:	Plan #1 (4-05-18)		

Planned Survey									
Measured Depth (ft)	Inclination (°)	Azimuth (°)	Vertical Depth (ft)	+N/-S (ft)	+E/-W (ft)	Vertical Section (ft)	Dogleg Rate (°/100usft)	Build Rate (°/100usft)	Turn Rate (°/100usft)
9,200.0	93.26	270.08	4,791.6	387.0	-1,622.3	1,646.5	0.00	0.00	0.00
9,300.0	93.26	270.08	4,785.9	387.2	-1,722.2	1,746.1	0.00	0.00	0.00
9,400.0	93.26	270.08	4,780.2	387.3	-1,822.0	1,845.7	0.00	0.00	0.00
9,500.0	93.26	270.08	4,774.5	387.4	-1,921.8	1,945.2	0.00	0.00	0.00
9,600.0	93.26	270.08	4,768.8	387.6	-2,021.7	2,044.8	0.00	0.00	0.00
9,700.0	93.26	270.08	4,763.1	387.7	-2,121.5	2,144.4	0.00	0.00	0.00
9,800.0	93.26	270.08	4,757.5	387.8	-2,221.4	2,244.0	0.00	0.00	0.00
9,900.0	93.26	270.08	4,751.8	388.0	-2,321.2	2,343.5	0.00	0.00	0.00
10,000.0	93.26	270.08	4,746.1	388.1	-2,421.0	2,443.1	0.00	0.00	0.00
10,100.0	93.26	270.08	4,740.4	388.2	-2,520.9	2,542.7	0.00	0.00	0.00
10,200.0	93.26	270.08	4,734.7	388.3	-2,620.7	2,642.3	0.00	0.00	0.00
10,300.0	93.26	270.08	4,729.0	388.5	-2,720.6	2,741.8	0.00	0.00	0.00
10,400.0	93.26	270.08	4,723.3	388.6	-2,820.4	2,841.4	0.00	0.00	0.00
10,500.0	93.26	270.08	4,717.6	388.7	-2,920.2	2,941.0	0.00	0.00	0.00
10,600.0	93.26	270.08	4,711.9	388.9	-3,020.1	3,040.6	0.00	0.00	0.00
10,700.0	93.26	270.08	4,706.3	389.0	-3,119.9	3,140.1	0.00	0.00	0.00
10,800.0	93.26	270.08	4,700.6	389.1	-3,219.7	3,239.7	0.00	0.00	0.00
10,900.0	93.26	270.08	4,694.9	389.3	-3,319.6	3,339.3	0.00	0.00	0.00
11,000.0	93.26	270.08	4,689.2	389.4	-3,419.4	3,438.9	0.00	0.00	0.00
11,100.0	93.26	270.08	4,683.5	389.5	-3,519.3	3,538.4	0.00	0.00	0.00
11,200.0	93.26	270.08	4,677.8	389.7	-3,619.1	3,638.0	0.00	0.00	0.00
11,300.0	93.26	270.08	4,672.1	389.8	-3,718.9	3,737.6	0.00	0.00	0.00
11,400.0	93.26	270.08	4,666.4	389.9	-3,818.8	3,837.2	0.00	0.00	0.00
11,500.0	93.26	270.08	4,660.7	390.0	-3,918.6	3,936.7	0.00	0.00	0.00
11,600.0	93.26	270.08	4,655.0	390.2	-4,018.4	4,036.3	0.00	0.00	0.00
11,700.0	93.26	270.08	4,649.4	390.3	-4,118.3	4,135.9	0.00	0.00	0.00
11,800.0	93.26	270.08	4,643.7	390.4	-4,218.1	4,235.4	0.00	0.00	0.00
11,900.0	93.26	270.08	4,638.0	390.6	-4,318.0	4,335.0	0.00	0.00	0.00
12,000.0	93.26	270.08	4,632.3	390.7	-4,417.8	4,434.6	0.00	0.00	0.00
12,100.0	93.26	270.08	4,626.6	390.8	-4,517.6	4,534.2	0.00	0.00	0.00
12,200.0	93.26	270.08	4,620.9	391.0	-4,617.5	4,633.7	0.00	0.00	0.00
12,300.0	93.26	270.08	4,615.2	391.1	-4,717.3	4,733.3	0.00	0.00	0.00
12,400.0	93.26	270.08	4,609.5	391.2	-4,817.2	4,832.9	0.00	0.00	0.00
12,500.0	93.26	270.08	4,603.8	391.4	-4,917.0	4,932.5	0.00	0.00	0.00
12,600.0	93.26	270.08	4,598.2	391.5	-5,016.8	5,032.0	0.00	0.00	0.00
12,700.0	93.26	270.08	4,592.5	391.6	-5,116.7	5,131.6	0.00	0.00	0.00
12,800.0	93.26	270.08	4,586.8	391.7	-5,216.5	5,231.2	0.00	0.00	0.00
12,866.4	93.26	270.08	4,583.0	391.8	-5,282.8	5,297.3	0.00	0.00	0.00
TD at 12866.4 - BHL 0'FNL, 1924'FWL, SEC.6									

Database:	US_EDM	Local Co-ordinate Reference:	Well Campion 5-6 1H
Company:	Magpie Operating, Inc.	TVD Reference:	WELL @ 5084.0ft (Original Well Elev)
Project:	SEC.5-T4N-R68W	MD Reference:	WELL @ 5084.0ft (Original Well Elev)
Site:	Campion Pad Sec.5-T4N-R68W	North Reference:	True
Well:	Campion 5-6 1H	Survey Calculation Method:	Minimum Curvature
Wellbore:	Wellbore #1		
Design:	Plan #1 (4-05-18)		

Design Targets									
Target Name - hit/miss target - Shape	Dip Angle (°)	Dip Dir. (°)	TVD (ft)	+N/-S (ft)	+E/-W (ft)	Northing (usft)	Easting (usft)	Latitude	Longitude
SHL 386°FNL, 1880°FWL - plan hits target center - Point	0.00	0.00	1.0	0.0	0.0	1,370,042.37	3,130,758.98	40.348218	-105.030862
BHL 0°FNL, 1924°FWL, 5 - plan hits target center - Point	0.00	0.00	4,583.0	391.8	-5,282.8	1,370,406.23	3,125,474.43	40.349292	-105.049815
LPL 0°FNL, 1934°FEL, S - plan hits target center - Point	0.00	0.00	5,101.0	382.9	1,457.2	1,370,432.99	3,132,214.08	40.349269	-105.025634

Plan Annotations				
Measured Depth (ft)	Vertical Depth (ft)	Local Coordinates		Comment
+N/-S (ft)	+E/-W (ft)			
200.0	200.0	0.0	0.0	KOP - Start Build 3.00
3,690.1	3,160.2	313.7	1,702.8	Start Drop -3.00
5,176.4	4,564.9	382.1	2,074.0	Start Build 10.58
7,602.4	4,892.2	384.9	-28.2	Start DLS 2.00 TFO -179.97
7,839.4	4,869.0	385.3	-263.9	Start 5027.0 hold at 7839.4 MD
12,866.4	4,583.0	391.8	-5,282.8	TD at 12866.4



Magpie Operating, Inc.

SEC.5-T4N-R68W

Campion Pad Sec.5-T4N-R68W

Campion 5-6 1H

Wellbore #1

Plan #1 (4-05-18)

Anticollision Report

05 April, 2018

Company:	Maggie Operating, Inc.	Local Co-ordinate Reference:	Well Campion 5-6 1H
Project:	SEC.5-T4N-R68W	TVD Reference:	WELL @ 5084.0ft (Original Well Elev)
Reference Site:	Campion Pad Sec.5-T4N-R68W	MD Reference:	WELL @ 5084.0ft (Original Well Elev)
Site Error:	0.0 ft	North Reference:	True
Reference Well:	Campion 5-6 1H	Survey Calculation Method:	Minimum Curvature
Well Error:	0.0 ft	Output errors are at	2.45 sigma
Reference Wellbore	Wellbore #1	Database:	US_EDM
Reference Design:	Plan #1 (4-05-18)	Offset TVD Reference:	Offset Datum

Reference	Plan #1 (4-05-18)		
Filter type:	NO GLOBAL FILTER: Using user defined selection & filtering criteria		
Interpolation Method:	Stations	Error Model:	ISCWSA
Depth Range:	Unlimited	Scan Method:	Closest Approach 3D
Results Limited by:	Maximum center-center distance of 800.0 ft	Error Surface:	Elliptical Conic
Warning Levels Evaluated at:	2.45 Sigma	Casing Method:	Not applied

Survey Tool Program	Date 4/5/2018			
From (ft)	To (ft)	Survey (Wellbore)	Tool Name	Description
0.0	12,866.4	Plan #1 (4-05-18) (Wellbore #1)	MWD	MWD - Standard

Summary						
Site Name	Reference Measured Depth (ft)	Offset Measured Depth (ft)	Distance Between Centres (ft)	Distance Between Ellipses (ft)	Separation Factor	Warning
Offset Well - Wellbore - Design						
Campion Pad Sec.5-T4N-R68W						
Campion 32-31 1H - Wellbore #1 - Plan #1 (2-28-18)	200.0	200.0	30.1	29.3	36.444	CC, ES
Campion 32-31 1H - Wellbore #1 - Plan #1 (2-28-18)	2,300.0	2,315.9	357.6	301.4	6.369	SF
Campion 5-6 2H - Wellbore #1 - Plan #1 (2-28-18)	200.0	200.0	60.2	59.4	72.888	CC, ES
Campion 5-6 2H - Wellbore #1 - Plan #1 (2-28-18)	3,100.0	3,076.5	790.7	709.8	9.779	SF
Existing Wells Sec.5, 6, 31, 32-T4N-R68W						
Bunker 3-A (Exist) - Niobrara Lateral - Wellbore #2 - Niob	7,601.8	7,658.1	120.8	59.1	1.958	CC, ES, SF
Bunker 3-A (Exist) - Original Vertical Hole - Wellbore #1 -						Out of range
Bunker 3-A (Exist) - Timpas Lateral - Wellbore #3 - Timpa	9,085.9	7,450.7	128.0	64.2	2.007	CC, ES, SF
Gentry-Clagett 1 (Exist) - Wellbore #1 - Wellbore #1	3,194.2	2,740.2	548.2	427.5	4.541	CC
Gentry-Clagett 1 (Exist) - Wellbore #1 - Wellbore #1	3,300.0	2,825.2	551.8	427.0	4.421	ES
Gentry-Clagett 1 (Exist) - Wellbore #1 - Wellbore #1	6,000.0	5,083.6	663.6	476.3	3.543	SF
Hale 2-A (P&A) - Wellbore #1 - Wellbore #1	11,316.2	4,682.2	408.5	112.0	1.378	Level 3, CC, ES, SF
Harold C Hale 1 (P&A) - Wellbore #1 - Wellbore #1	11,482.3	4,671.7	613.4	311.3	2.030	CC
Harold C Hale 1 (P&A) - Wellbore #1 - Wellbore #1	11,500.0	4,670.7	613.7	310.9	2.027	ES, SF
Peterson 2 (Exist) - Wellbore #1 - Wellbore #1	898.4	866.9	299.2	272.9	11.353	CC
Peterson 2 (Exist) - Wellbore #1 - Wellbore #1	1,000.0	960.8	301.8	271.7	10.056	ES
Peterson 2 (Exist) - Wellbore #1 - Wellbore #1	7,400.0	4,904.4	656.1	468.1	3.490	SF

Offset Design Campion Pad Sec.5-T4N-R68W - Campion 32-31 1H - Wellbore #1 - Plan #1 (2-28-18)													Offset Site Error:	0.0 ft
Survey Program: 0-MWD													Offset Well Error:	0.0 ft
Reference		Offset		Semi Major Axis			Distance							Warning
Measured Depth	Vertical Depth	Measured Depth	Vertical Depth	Reference	Offset	Highside Toolface	Offset Wellbore Centre		Between Centres	Between Ellipses	Minimum Separation	Separation Factor		
(ft)	(ft)	(ft)	(ft)	(ft)	(ft)	(°)	+N/-S (ft)	+E/-W (ft)	(ft)	(ft)	(ft)			
0.0	0.0	0.0	0.0	0.0	0.0	-90.03	0.0	-30.1	30.1					
100.0	100.0	100.0	100.0	0.1	0.1	-90.03	0.0	-30.1	30.1	29.8	0.28	109.332		
200.0	200.0	200.0	200.0	0.4	0.4	-90.03	0.0	-30.1	30.1	29.3	0.83	36.444	CC, ES	
300.0	300.0	300.0	300.0	0.7	0.7	-170.41	0.0	-30.1	32.7	31.3	1.42	23.078		
400.0	399.6	399.6	399.6	1.0	1.0	-172.23	0.0	-30.1	40.4	38.4	2.04	19.825		
500.0	498.8	501.2	501.1	1.5	1.2	-172.71	1.4	-27.8	51.1	48.4	2.66	19.243		
600.0	597.1	603.2	602.8	2.1	1.5	-171.18	5.8	-21.0	62.3	59.1	3.27	19.053		
700.0	694.3	705.5	704.2	2.9	1.9	-168.56	13.1	-9.5	74.2	70.3	3.94	18.855		
800.0	790.2	808.2	805.1	3.9	2.3	-165.36	23.3	6.5	86.9	82.2	4.70	18.483		
900.0	884.4	911.1	905.0	5.1	2.8	-161.87	36.5	27.2	100.6	95.0	5.65	17.821		

CC - Min centre to center distance or convergent point, SF - min separation factor, ES - min ellipse separation

Company:	Maggie Operating, Inc.	Local Co-ordinate Reference:	Well Campion 5-6 1H
Project:	SEC.5-T4N-R68W	TVD Reference:	WELL @ 5084.0ft (Original Well Elev)
Reference Site:	Campion Pad Sec.5-T4N-R68W	MD Reference:	WELL @ 5084.0ft (Original Well Elev)
Site Error:	0.0 ft	North Reference:	True
Reference Well:	Campion 5-6 1H	Survey Calculation Method:	Minimum Curvature
Well Error:	0.0 ft	Output errors are at	2.45 sigma
Reference Wellbore	Wellbore #1	Database:	US_EDM
Reference Design:	Plan #1 (4-05-18)	Offset TVD Reference:	Offset Datum

Offset Design													Offset Site Error:	0.0 ft
Survey Program: 0-MWD													Offset Well Error:	0.0 ft
Reference		Offset		Semi Major Axis			Distance							Warning
Measured Depth (ft)	Vertical Depth (ft)	Measured Depth (ft)	Vertical Depth (ft)	Reference (ft)	Offset (ft)	Highside Toolface (°)	Offset Wellbore Centre +N/-S (ft)	+E/-W (ft)	Between Centres (ft)	Between Ellipses (ft)	Minimum Separation (ft)	Separation Factor		
1,000.0	976.8	1,014.2	1,003.6	6.5	3.5	-158.26	52.6	52.4	115.4	108.6	6.85	16.861		
1,100.0	1,067.1	1,117.4	1,100.6	8.1	4.3	-154.65	71.6	82.2	131.5	123.1	8.37	15.707		
1,200.0	1,154.9	1,220.7	1,195.7	9.8	5.2	-151.13	93.3	116.3	148.9	138.7	10.27	14.500		
1,300.0	1,240.2	1,324.0	1,288.4	11.8	6.3	-147.73	117.8	154.7	167.8	155.2	12.56	13.357		
1,400.0	1,322.6	1,427.3	1,378.5	13.8	7.5	-144.49	145.0	197.3	188.2	172.9	15.26	12.331		
1,421.5	1,339.9	1,449.5	1,397.4	14.3	7.8	-143.81	151.1	207.0	192.7	176.8	15.89	12.128		
1,500.0	1,402.9	1,530.7	1,465.8	16.0	8.8	-141.44	174.7	244.0	208.8	190.4	18.38	11.357		
1,600.0	1,483.1	1,634.2	1,550.1	18.2	10.3	-137.81	207.0	294.6	227.2	205.2	22.03	10.314		
1,700.0	1,563.4	1,737.3	1,630.7	20.5	12.0	-133.60	241.6	348.8	244.0	217.9	26.20	9.316		
1,800.0	1,643.6	1,839.2	1,706.8	22.7	13.8	-128.88	278.0	405.9	260.0	229.2	30.83	8.433		
1,900.0	1,723.8	1,939.6	1,778.2	24.9	15.6	-123.75	315.9	465.4	275.9	240.1	35.83	7.702		
2,000.0	1,804.1	2,037.8	1,844.3	27.1	17.6	-118.33	355.0	526.6	292.8	251.7	41.03	7.135		
2,100.0	1,884.3	2,133.5	1,905.1	29.3	19.6	-112.76	394.7	588.9	311.5	265.2	46.27	6.731		
2,200.0	1,964.6	2,226.3	1,960.4	31.5	21.7	-107.19	434.7	651.7	332.8	281.5	51.36	6.480		
2,300.0	2,044.8	2,315.9	2,010.3	33.7	23.7	-101.76	474.7	714.4	357.6	301.4	56.14	6.369 SF		
2,400.0	2,125.0	2,405.1	2,057.9	36.0	25.9	-96.62	515.3	778.1	385.9	325.3	60.58	6.370		
2,500.0	2,205.3	2,494.7	2,105.6	38.2	28.0	-92.12	556.1	842.0	417.1	352.4	64.63	6.453		
2,600.0	2,285.5	2,584.2	2,153.2	40.4	30.2	-88.19	596.8	905.9	450.5	382.1	68.36	6.590		
2,700.0	2,365.7	2,673.7	2,200.9	42.6	32.3	-84.78	637.6	969.8	485.7	413.9	71.84	6.761		
2,800.0	2,446.0	2,763.3	2,248.6	44.8	34.5	-81.80	678.3	1,033.8	522.4	447.2	75.13	6.953		
2,900.0	2,526.2	2,852.8	2,296.3	47.0	36.7	-79.19	719.1	1,097.7	560.1	481.9	78.27	7.156		
3,000.0	2,606.4	2,942.3	2,343.9	49.3	38.8	-76.90	759.8	1,161.6	598.8	517.5	81.31	7.365		
3,100.0	2,686.7	3,031.9	2,391.6	51.5	41.0	-74.87	800.6	1,225.5	638.3	554.1	84.26	7.576		
3,200.0	2,766.9	3,121.4	2,439.3	53.7	43.2	-73.07	841.3	1,289.4	678.4	591.3	87.15	7.785		
3,300.0	2,847.2	3,211.0	2,486.9	55.9	45.4	-71.47	882.1	1,353.3	719.0	629.1	89.99	7.990		
3,400.0	2,927.4	3,300.5	2,534.6	58.1	47.6	-70.03	922.8	1,417.2	760.1	667.3	92.80	8.191		

Company:	Maggie Operating, Inc.	Local Co-ordinate Reference:	Well Campion 5-6 1H
Project:	SEC.5-T4N-R68W	TVD Reference:	WELL @ 5084.0ft (Original Well Elev)
Reference Site:	Campion Pad Sec.5-T4N-R68W	MD Reference:	WELL @ 5084.0ft (Original Well Elev)
Site Error:	0.0 ft	North Reference:	True
Reference Well:	Campion 5-6 1H	Survey Calculation Method:	Minimum Curvature
Well Error:	0.0 ft	Output errors are at	2.45 sigma
Reference Wellbore	Wellbore #1	Database:	US_EDM
Reference Design:	Plan #1 (4-05-18)	Offset TVD Reference:	Offset Datum

Offset Design													Offset Site Error:	0.0 ft
Campion Pad Sec.5-T4N-R68W - Campion 5-6 2H - Wellbore #1 - Plan #1 (2-28-18)													Offset Well Error:	0.0 ft
Survey Program: 0-MWD														
Reference		Offset		Semi Major Axis			Distance						Warning	
Measured Depth (ft)	Vertical Depth (ft)	Measured Depth (ft)	Vertical Depth (ft)	Reference (ft)	Offset (ft)	Highside Toolface (°)	Offset Wellbore Centre +N/-S (ft)	+E/-W (ft)	Between Centres (ft)	Between Ellipses (ft)	Minimum Separation (ft)	Separation Factor		
0.0	0.0	0.0	0.0	0.0	0.0	-90.01	0.0	-60.2	60.2					
100.0	100.0	100.0	100.0	0.1	0.1	-90.01	0.0	-60.2	60.2	59.9	0.28	218.665		
200.0	200.0	200.0	200.0	0.4	0.4	-90.01	0.0	-60.2	60.2	59.4	0.83	72.888 CC, ES		
300.0	300.0	300.0	300.0	0.7	0.7	-169.99	0.0	-60.2	62.8	61.4	1.42	44.339		
400.0	399.6	399.6	399.6	1.0	1.0	-171.06	0.0	-60.2	70.5	68.5	2.04	34.585		
500.0	498.8	498.8	498.8	1.5	1.2	-172.40	0.0	-60.2	83.4	80.8	2.67	31.210		
600.0	597.1	597.1	597.1	2.1	1.5	-173.70	0.0	-60.2	101.5	98.2	3.31	30.660		
700.0	694.3	699.9	699.9	2.9	1.8	-175.47	-1.0	-57.8	122.6	118.7	3.92	31.261		
800.0	790.2	803.6	803.3	3.9	2.0	-178.01	-4.3	-50.2	144.3	139.8	4.51	32.001		
900.0	884.4	907.9	906.6	5.1	2.4	179.00	-9.8	-37.5	167.0	161.8	5.14	32.490		
1,000.0	976.8	1,012.5	1,009.3	6.5	2.8	175.74	-17.5	-19.4	190.7	184.9	5.85	32.596		
1,100.0	1,067.1	1,117.5	1,111.2	8.1	3.3	172.35	-27.5	3.8	215.8	209.1	6.72	32.135		
1,200.0	1,154.9	1,222.5	1,211.6	9.8	3.9	168.89	-39.7	32.2	242.5	234.6	7.82	31.014		
1,300.0	1,240.2	1,327.6	1,310.2	11.8	4.7	165.44	-54.1	65.6	270.8	261.6	9.24	29.321		
1,400.0	1,322.6	1,432.6	1,406.5	13.8	5.7	162.03	-70.6	103.9	301.1	290.0	11.04	27.265		
1,421.5	1,339.9	1,455.1	1,426.8	14.3	6.0	161.31	-74.4	112.7	307.8	296.3	11.48	26.821		
1,500.0	1,402.9	1,537.8	1,500.6	16.0	6.9	158.86	-89.1	147.1	331.8	318.6	13.27	25.013		
1,600.0	1,483.1	1,643.7	1,592.5	18.2	8.2	155.55	-109.9	195.3	360.3	344.3	16.01	22.502		
1,700.0	1,563.4	1,749.7	1,681.5	20.5	9.7	152.02	-132.6	248.2	386.6	367.3	19.25	20.082		
1,800.0	1,643.6	1,855.1	1,766.7	22.7	11.3	148.29	-157.1	305.2	411.3	388.3	22.99	17.890		
1,900.0	1,723.8	1,959.3	1,847.4	24.9	13.1	144.37	-183.2	365.7	435.0	407.8	27.21	15.989		
2,000.0	1,804.1	2,061.8	1,923.2	27.1	15.1	140.31	-210.4	429.1	458.3	426.5	31.83	14.398		
2,100.0	1,884.3	2,154.4	1,989.8	29.3	16.9	136.68	-235.8	488.2	482.5	446.1	36.42	13.250		
2,200.0	1,964.6	2,246.6	2,056.1	31.5	18.8	133.40	-261.1	547.1	508.5	467.5	41.01	12.399		
2,300.0	2,044.8	2,338.8	2,122.5	33.7	20.6	130.42	-286.4	605.9	536.0	490.4	45.60	11.754		
2,400.0	2,125.0	2,431.0	2,188.8	36.0	22.5	127.72	-311.7	664.8	564.9	514.7	50.17	11.259		
2,500.0	2,205.3	2,523.2	2,255.1	38.2	24.4	125.26	-337.1	723.6	594.8	540.1	54.69	10.876		
2,600.0	2,285.5	2,615.4	2,321.4	40.4	26.2	123.03	-362.4	782.5	625.7	566.6	59.17	10.575		
2,700.0	2,365.7	2,707.6	2,387.7	42.6	28.1	121.01	-387.7	841.3	657.5	593.9	63.60	10.338		
2,800.0	2,446.0	2,799.9	2,454.0	44.8	30.0	119.16	-413.0	900.2	689.9	622.0	67.98	10.149		
2,900.0	2,526.2	2,892.1	2,520.4	47.0	31.9	117.47	-438.3	959.0	723.0	650.7	72.32	9.998		
3,000.0	2,606.4	2,984.3	2,586.7	49.3	33.8	115.92	-463.6	1,017.9	756.6	680.0	76.61	9.877		
3,100.0	2,686.7	3,076.5	2,653.0	51.5	35.7	114.50	-488.9	1,076.7	790.7	709.8	80.85	9.779 SF		

Company:	Maggie Operating, Inc.	Local Co-ordinate Reference:	Well Campion 5-6 1H
Project:	SEC.5-T4N-R68W	TVD Reference:	WELL @ 5084.0ft (Original Well Elev)
Reference Site:	Campion Pad Sec.5-T4N-R68W	MD Reference:	WELL @ 5084.0ft (Original Well Elev)
Site Error:	0.0 ft	North Reference:	True
Reference Well:	Campion 5-6 1H	Survey Calculation Method:	Minimum Curvature
Well Error:	0.0 ft	Output errors are at	2.45 sigma
Reference Wellbore	Wellbore #1	Database:	US_EDM
Reference Design:	Plan #1 (4-05-18)	Offset TVD Reference:	Offset Datum

Offset Design Existing Wells Sec.5, 6, 31, 32-T4N-R68W - Bunker 3-A (Exist) - Niobrara Lateral - Wellbore #2 - Niobra													Offset Site Error:	0.0 ft
Survey Program: 100-MWD, 3376-MWD													Offset Well Error:	0.0 ft
Reference		Offset		Semi Major Axis			Distance							Warning
Measured Depth	Vertical Depth	Measured Depth	Vertical Depth	Reference	Offset	Highside Toolface	Offset Wellbore Centre		Between Centres	Between Ellipses	Minimum Separation	Separation Factor		
(ft)	(ft)	(ft)	(ft)	(ft)	(ft)	(°)	+N/-S (ft)	+E/-W (ft)	(ft)	(ft)	(ft)			
6,700.0	5,017.8	8,112.5	4,788.5	60.7	96.5	-75.55	-11.7	216.0	784.8	691.6	93.19	8.421	CC, ES, SF	
6,800.0	5,003.9	8,076.4	4,784.1	61.1	95.6	-74.12	19.4	198.1	700.0	607.2	92.78	7.545		
6,900.0	4,990.0	8,024.5	4,778.1	61.8	94.2	-71.69	63.5	171.5	616.4	524.4	92.01	6.699		
7,000.0	4,976.1	7,965.1	4,771.0	62.6	92.6	-68.02	114.4	141.6	532.7	441.9	90.81	5.866		
7,100.0	4,962.2	7,913.4	4,764.9	63.7	91.3	-63.72	158.9	116.1	449.4	359.9	89.46	5.023		
7,200.0	4,948.2	7,862.4	4,759.0	65.0	89.9	-57.98	202.8	90.6	367.5	280.1	87.34	4.207		
7,300.0	4,934.3	7,808.5	4,754.0	66.4	88.5	-49.71	249.1	63.7	287.3	203.8	83.53	3.440		
7,400.0	4,920.4	7,760.4	4,749.5	68.1	87.2	-39.09	290.5	39.6	212.0	134.2	77.80	2.725		
7,500.0	4,906.5	7,710.4	4,744.0	69.9	85.9	-23.56	333.4	14.5	149.5	80.8	68.67	2.177		
7,601.8	4,892.3	7,658.1	4,737.9	71.9	84.6	-2.95	378.7	-10.8	120.8	59.1	61.67	1.958		
7,602.4	4,892.2	7,657.8	4,737.9	71.9	84.6	-2.82	379.0	-10.9	120.8	59.1	61.67	1.958		
7,700.0	4,880.3	7,611.0	4,732.5	72.0	83.3	15.98	419.9	-33.1	149.6	82.9	66.69	2.244		
7,800.0	4,871.5	7,563.6	4,726.7	70.4	82.1	32.14	461.3	-55.5	215.5	140.2	75.36	2.860		
7,839.4	4,869.0	7,539.0	4,723.7	69.7	81.5	38.82	482.6	-67.4	245.5	166.7	78.78	3.116		
7,900.0	4,865.6	7,512.2	4,720.5	70.0	80.8	44.28	505.8	-80.6	293.4	211.1	82.32	3.565		
8,000.0	4,859.9	7,469.8	4,715.2	72.5	79.7	50.94	542.7	-100.6	376.1	288.3	87.81	4.283		
8,100.0	4,854.2	7,416.8	4,708.6	75.1	78.3	56.88	589.0	-125.5	460.9	368.2	92.75	4.970		
8,200.0	4,848.5	7,366.8	4,703.6	77.9	77.0	61.07	632.5	-149.7	545.8	449.1	96.72	5.643		
8,300.0	4,842.8	7,324.7	4,699.2	80.7	75.9	63.79	669.4	-169.4	632.1	532.0	100.10	6.315		
8,400.0	4,837.1	7,272.8	4,692.8	83.5	74.6	66.25	714.6	-194.1	718.5	615.3	103.29	6.957		

Company:	Magpie Operating, Inc.	Local Co-ordinate Reference:	Well Campion 5-6 1H
Project:	SEC.5-T4N-R68W	TVD Reference:	WELL @ 5084.0ft (Original Well Elev)
Reference Site:	Campion Pad Sec.5-T4N-R68W	MD Reference:	WELL @ 5084.0ft (Original Well Elev)
Site Error:	0.0 ft	North Reference:	True
Reference Well:	Campion 5-6 1H	Survey Calculation Method:	Minimum Curvature
Well Error:	0.0 ft	Output errors are at	2.45 sigma
Reference Wellbore	Wellbore #1	Database:	US_EDM
Reference Design:	Plan #1 (4-05-18)	Offset TVD Reference:	Offset Datum

Offset Design													Existing Wells Sec.5, 6, 31, 32-T4N-R68W - Bunker 3-A (Exist) - Timpas Lateral - Wellbore #3 - Timpas		Offset Site Error:		0.0 ft
Survey Program:													100-MWD, 3376-MWD, 5120-MWD		Offset Well Error:		0.0 ft
Reference		Offset		Semi Major Axis			Distance							Warning			
Measured Depth	Vertical Depth	Measured Depth	Vertical Depth	Reference	Offset	Highside Toolface	Offset Wellbore Centre	Between Centres	Between Ellipses	Minimum Separation	Separation Factor						
Depth (ft)	(ft)	Depth (ft)	(ft)	(ft)	(ft)	(°)	+N/-S (ft)	+E/-W (ft)	(ft)	(ft)	(ft)						
8,300.0	4,842.8	7,334.2	4,884.8	80.7	65.4	135.32	506.3	-1,495.5	784.8	702.5	82.31	9.535	2.007 CC, ES, SF				
8,400.0	4,837.1	7,347.8	4,885.5	83.5	65.6	138.93	492.9	-1,497.5	687.4	605.5	81.85	8.398					
8,500.0	4,831.4	7,358.8	4,886.2	86.5	65.9	142.16	482.0	-1,499.2	590.5	509.1	81.38	7.256					
8,600.0	4,825.7	7,370.5	4,886.9	89.5	66.1	145.84	470.5	-1,501.0	494.5	414.3	80.24	6.163					
8,700.0	4,820.0	7,383.3	4,887.8	92.5	66.4	150.23	457.9	-1,503.1	400.1	321.9	78.17	5.118					
8,800.0	4,814.3	7,398.1	4,888.7	95.6	66.7	155.75	443.3	-1,505.7	308.4	233.6	74.77	4.124					
8,900.0	4,808.7	7,414.7	4,889.5	98.8	67.0	162.35	427.1	-1,508.6	222.7	152.3	70.37	3.164					
9,000.0	4,803.0	7,433.2	4,890.3	102.0	67.4	170.19	408.9	-1,512.2	153.2	87.3	65.87	2.325					
9,085.9	4,798.1	7,450.7	4,890.8	104.7	67.8	177.83	391.7	-1,515.7	128.0	64.2	63.77						
9,100.0	4,797.3	7,453.6	4,890.8	105.2	67.8	179.10	388.9	-1,516.2	128.7	65.0	63.75	2.020					
9,200.0	4,791.6	7,473.6	4,891.3	108.4	68.3	-172.20	369.3	-1,520.2	170.0	103.7	66.32	2.563					
9,300.0	4,785.9	7,493.4	4,891.6	111.7	68.7	-164.01	349.9	-1,524.1	245.9	173.1	72.78	3.378					
9,400.0	4,780.2	7,512.0	4,891.9	115.0	69.1	-156.93	331.7	-1,527.7	333.5	252.7	80.78	4.129					
9,500.0	4,774.5	7,527.5	4,892.2	118.4	69.4	-151.55	316.4	-1,530.6	425.9	337.7	88.19	4.830					
9,600.0	4,768.8	7,543.7	4,892.5	121.7	69.7	-146.52	300.6	-1,533.6	520.6	424.8	95.79	5.434					
9,700.0	4,763.1	7,563.3	4,892.9	125.1	70.1	-141.14	281.2	-1,537.2	616.4	512.2	104.20	5.916					
9,800.0	4,757.5	7,580.2	4,893.3	128.5	70.5	-137.15	264.7	-1,540.3	712.9	601.7	111.19	6.411					

Company:	Magpie Operating, Inc.	Local Co-ordinate Reference:	Well Champion 5-6 1H
Project:	SEC.5-T4N-R68W	TVD Reference:	WELL @ 5084.0ft (Original Well Elev)
Reference Site:	Campion Pad Sec.5-T4N-R68W	MD Reference:	WELL @ 5084.0ft (Original Well Elev)
Site Error:	0.0 ft	North Reference:	True
Reference Well:	Campion 5-6 1H	Survey Calculation Method:	Minimum Curvature
Well Error:	0.0 ft	Output errors are at	2.45 sigma
Reference Wellbore	Wellbore #1	Database:	US_EDM
Reference Design:	Plan #1 (4-05-18)	Offset TVD Reference:	Offset Datum

Offset Design Existing Wells Sec.5, 6, 31, 32-T4N-R68W - Gentry-Clagett 1 (Exist) - Wellbore #1 - Wellbore #1													Offset Site Error:	0.0 ft
Survey Program: 5891-UNKNOWN													Offset Well Error:	0.0 ft
Reference		Offset		Semi Major Axis			Distance							Warning
Measured Depth (ft)	Vertical Depth (ft)	Measured Depth (ft)	Vertical Depth (ft)	Reference (ft)	Offset (ft)	Highside Toolface (°)	Offset Wellbore Centre +N/-S (ft)	+E/-W (ft)	Between Centres (ft)	Between Ellipses (ft)	Minimum Separation (ft)	Separation Factor		
2,300.0	2,044.8	2,022.8	2,022.8	33.7	49.6	52.01	-279.0	1,511.0	765.1	691.7	73.34	10.432		
2,400.0	2,125.0	2,103.0	2,103.0	36.0	51.5	55.25	-279.0	1,511.0	724.7	646.1	78.56	9.224		
2,500.0	2,205.3	2,183.3	2,183.3	38.2	53.5	58.77	-279.0	1,511.0	687.1	603.1	83.98	8.182		
2,600.0	2,285.5	2,263.5	2,263.5	40.4	55.5	62.57	-279.0	1,511.0	652.9	563.3	89.55	7.291		
2,700.0	2,365.7	2,343.7	2,343.7	42.6	57.4	66.65	-279.0	1,511.0	622.5	527.3	95.20	6.539		
2,800.0	2,446.0	2,424.0	2,424.0	44.8	59.4	71.00	-279.0	1,511.0	596.5	495.7	100.84	5.916		
2,900.0	2,526.2	2,504.2	2,504.2	47.0	61.4	75.59	-279.0	1,511.0	575.6	469.3	106.36	5.412		
3,000.0	2,606.4	2,584.4	2,584.4	49.3	63.3	80.37	-279.0	1,511.0	560.3	448.7	111.63	5.019		
3,100.0	2,686.7	2,664.7	2,664.7	51.5	65.3	85.30	-279.0	1,511.0	551.1	434.5	116.53	4.729		
3,194.2	2,762.2	2,740.2	2,740.2	53.6	67.1	90.00	-279.0	1,511.0	548.2	427.5	120.71	4.541 CC		
3,200.0	2,766.9	2,744.9	2,744.9	53.7	67.3	90.29	-279.0	1,511.0	548.2	427.2	120.96	4.532		
3,300.0	2,847.2	2,825.2	2,825.2	55.9	69.2	95.28	-279.0	1,511.0	551.8	427.0	124.82	4.421 ES		
3,400.0	2,927.4	2,905.4	2,905.4	58.1	71.2	100.19	-279.0	1,511.0	561.8	433.7	128.09	4.386		
3,500.0	3,007.6	2,985.6	2,985.6	60.4	73.1	104.96	-279.0	1,511.0	577.8	447.0	130.76	4.419		
3,600.0	3,087.9	3,065.9	3,065.9	62.6	75.1	109.52	-279.0	1,511.0	599.3	466.4	132.88	4.510		
3,690.1	3,160.1	3,138.1	3,138.1	64.6	76.9	113.42	-279.0	1,511.0	623.0	488.6	134.37	4.636		
3,700.0	3,168.1	3,146.1	3,146.1	64.7	77.1	113.92	-279.0	1,511.0	625.8	491.4	134.44	4.655		
3,800.0	3,250.2	3,228.2	3,228.2	65.7	79.1	118.68	-279.0	1,511.0	655.3	520.7	134.56	4.870		
3,900.0	3,335.1	3,313.1	3,313.1	66.5	81.2	122.95	-279.0	1,511.0	685.6	550.8	134.82	5.085		
4,000.0	3,422.7	3,400.7	3,400.7	67.4	83.3	126.70	-279.0	1,511.0	715.6	580.2	135.38	5.286		
4,100.0	3,512.7	3,490.7	3,490.7	68.2	85.5	129.93	-279.0	1,511.0	744.4	608.1	136.28	5.462		
4,200.0	3,604.8	3,582.8	3,582.8	69.0	87.8	132.66	-279.0	1,511.0	771.2	633.6	137.54	5.607		
4,300.0	3,698.9	3,676.9	3,676.9	69.7	90.1	134.94	-279.0	1,511.0	795.4	656.3	139.12	5.718		
5,550.0	4,909.5	4,887.5	4,887.5	69.7	119.7	-62.95	-279.0	1,511.0	793.8	622.4	171.41	4.631		
5,600.0	4,946.6	4,924.6	4,924.6	69.2	120.7	-66.56	-279.0	1,511.0	775.8	601.1	174.67	4.441		
5,650.0	4,980.3	4,958.3	4,958.3	68.5	121.5	-70.39	-279.0	1,511.0	757.2	579.1	178.10	4.252		
5,700.0	5,010.6	4,988.6	4,988.6	67.9	122.2	-74.29	-279.0	1,511.0	738.7	557.3	181.36	4.073		
5,750.0	5,037.0	5,015.0	5,015.0	67.2	122.9	-78.08	-279.0	1,511.0	720.9	536.7	184.12	3.915		
5,800.0	5,059.4	5,037.4	5,037.4	66.5	123.4	-81.58	-279.0	1,511.0	704.4	518.2	186.12	3.784		
5,850.0	5,077.6	5,055.6	5,055.6	65.8	123.9	-84.62	-279.0	1,511.0	689.8	502.5	187.31	3.683		
5,900.0	5,091.5	5,069.5	5,069.5	65.1	124.2	-87.06	-279.0	1,511.0	677.9	490.1	187.76	3.610		
5,950.0	5,100.8	5,078.8	5,078.8	64.5	124.4	-88.81	-279.0	1,511.0	669.0	481.3	187.67	3.565		
6,000.0	5,105.6	5,083.6	5,083.6	63.9	124.5	-89.80	-279.0	1,511.0	663.6	476.3	187.27	3.543 SF		
6,047.5	5,105.9	5,083.9	5,083.9	63.4	124.6	-90.00	-279.0	1,511.0	661.9	475.1	186.75	3.544		
6,050.0	5,105.8	5,083.8	5,083.8	63.3	124.6	-89.99	-279.0	1,511.0	661.9	475.2	186.72	3.545		
6,102.4	5,101.0	5,079.0	5,079.0	62.8	124.4	-89.34	-279.0	1,511.0	664.1	478.1	186.07	3.569		
6,102.4	5,101.0	5,079.0	5,079.0	62.8	124.4	-89.34	-279.0	1,511.0	664.1	478.1	186.07	3.569		
6,200.0	5,087.4	5,065.4	5,065.4	61.9	124.1	-88.18	-279.0	1,511.0	679.0	494.1	184.85	3.673		
6,300.0	5,073.5	5,051.5	5,051.5	61.2	123.8	-86.99	-279.0	1,511.0	707.7	523.9	183.74	3.851		
6,400.0	5,059.6	5,037.6	5,037.6	60.8	123.4	-85.80	-279.0	1,511.0	748.4	565.7	182.77	4.095		
6,500.0	5,045.7	5,023.7	5,023.7	60.5	123.1	-84.61	-279.0	1,511.0	799.5	617.5	181.96	4.394		

Company:	Magpie Operating, Inc.	Local Co-ordinate Reference:	Well Campion 5-6 1H
Project:	SEC.5-T4N-R68W	TVD Reference:	WELL @ 5084.0ft (Original Well Elev)
Reference Site:	Campion Pad Sec.5-T4N-R68W	MD Reference:	WELL @ 5084.0ft (Original Well Elev)
Site Error:	0.0 ft	North Reference:	True
Reference Well:	Campion 5-6 1H	Survey Calculation Method:	Minimum Curvature
Well Error:	0.0 ft	Output errors are at	2.45 sigma
Reference Wellbore	Wellbore #1	Database:	US_EDM
Reference Design:	Plan #1 (4-05-18)	Offset TVD Reference:	Offset Datum

Offset Design Existing Wells Sec.5, 6, 31, 32-T4N-R68W - Hale 2-A (P&A) - Wellbore #1 - Wellbore #1													Offset Site Error:	0.0 ft
Survey Program: 5006-UNKNOWN													Offset Well Error:	0.0 ft
Reference		Offset		Semi Major Axis			Distance							
Measured Depth	Vertical Depth	Measured Depth	Vertical Depth	Reference	Offset	Highside Toolface	Offset Wellbore Centre		Between Centres	Between Ellipses	Minimum Separation	Separation Factor	Warning	
(ft)	(ft)	(ft)	(ft)	(ft)	(ft)	(°)	+N/-S (ft)	+E/-W (ft)	(ft)	(ft)	(ft)			
10,700.0	4,706.3	4,717.3	4,717.3	159.9	115.6	-94.90	-18.7	-3,735.6	738.4	463.9	274.58	2.689		
10,800.0	4,700.6	4,711.6	4,711.6	163.4	115.4	-94.11	-18.7	-3,735.6	657.6	379.4	278.23	2.363		
10,900.0	4,694.9	4,705.9	4,705.9	166.9	115.3	-93.31	-18.7	-3,735.6	582.7	300.8	281.84	2.067		
11,000.0	4,689.2	4,700.2	4,700.2	170.5	115.2	-92.52	-18.7	-3,735.6	516.2	230.8	285.41	1.809		
11,100.0	4,683.5	4,694.5	4,694.5	174.1	115.0	-91.72	-18.7	-3,735.6	462.0	173.0	288.95	1.599		
11,200.0	4,677.8	4,688.8	4,688.8	177.6	114.9	-90.93	-18.7	-3,735.6	424.6	132.2	292.45	1.452	Level 3	
11,300.0	4,672.1	4,683.1	4,683.1	181.2	114.7	-90.13	-18.7	-3,735.6	408.8	112.9	295.90	1.382	Level 3	
11,316.2	4,671.2	4,682.2	4,682.2	181.8	114.7	-90.00	-18.7	-3,735.6	408.5	112.0	296.45	1.378	Level 3, CC, ES, SF	
11,400.0	4,666.4	4,677.4	4,677.4	184.8	114.6	-89.33	-18.7	-3,735.6	417.0	117.7	299.30	1.393	Level 3	
11,500.0	4,660.7	4,671.7	4,671.7	188.4	114.5	-88.54	-18.7	-3,735.6	447.8	145.2	302.66	1.480	Level 3	
11,600.0	4,655.0	4,666.0	4,666.0	192.0	114.3	-87.74	-18.7	-3,735.6	497.1	191.2	305.96	1.625		
11,700.0	4,649.4	4,660.4	4,660.4	195.6	114.2	-86.94	-18.7	-3,735.6	560.1	250.9	309.21	1.811		
11,800.0	4,643.7	4,654.7	4,654.7	199.2	114.0	-86.15	-18.7	-3,735.6	632.6	320.2	312.41	2.025		
11,900.0	4,638.0	4,649.0	4,649.0	202.8	113.9	-85.36	-18.7	-3,735.6	711.8	396.2	315.55	2.256		
12,000.0	4,632.3	4,643.3	4,643.3	206.4	113.8	-84.57	-18.7	-3,735.6	795.6	476.9	318.64	2.497		

Company:	Maggie Operating, Inc.	Local Co-ordinate Reference:	Well Campion 5-6 1H
Project:	SEC.5-T4N-R68W	TVD Reference:	WELL @ 5084.0ft (Original Well Elev)
Reference Site:	Campion Pad Sec.5-T4N-R68W	MD Reference:	WELL @ 5084.0ft (Original Well Elev)
Site Error:	0.0 ft	North Reference:	True
Reference Well:	Campion 5-6 1H	Survey Calculation Method:	Minimum Curvature
Well Error:	0.0 ft	Output errors are at	2.45 sigma
Reference Wellbore	Wellbore #1	Database:	US_EDM
Reference Design:	Plan #1 (4-05-18)	Offset TVD Reference:	Offset Datum

Offset Design Existing Wells Sec.5, 6, 31, 32-T4N-R68W - Harold C Hale 1 (P&A) - Wellbore #1 - Wellbore #1												Offset Site Error:	0.0 ft
Survey Program: 4970-UNKNOWN												Offset Well Error:	0.0 ft
Reference		Offset		Semi Major Axis			Distance						Warning
Measured Depth (ft)	Vertical Depth (ft)	Measured Depth (ft)	Vertical Depth (ft)	Reference (ft)	Offset (ft)	Highside Toolface (°)	Offset Wellbore Centre +N/-S (ft)	+E/-W (ft)	Between Centres (ft)	Between Ellipses (ft)	Minimum Separation (ft)	Separation Factor	
11,000.0	4,689.2	4,699.2	4,699.2	170.5	115.1	-92.56	-223.4	-3,901.8	779.8	494.5	285.38	2.733	
11,100.0	4,683.5	4,693.5	4,693.5	174.1	115.0	-92.03	-223.4	-3,901.8	722.5	433.6	288.89	2.501	
11,200.0	4,677.8	4,687.8	4,687.8	177.6	114.9	-91.50	-223.4	-3,901.8	675.1	382.7	292.38	2.309	
11,300.0	4,672.1	4,682.1	4,682.1	181.2	114.7	-90.97	-223.4	-3,901.8	639.8	344.0	295.86	2.163	
11,400.0	4,666.4	4,676.4	4,676.4	184.8	114.6	-90.44	-223.4	-3,901.8	618.9	319.6	299.32	2.068	
11,482.3	4,661.7	4,671.7	4,671.7	187.7	114.5	-90.00	-223.4	-3,901.8	613.4	311.3	302.15	2.030 CC	
11,500.0	4,660.7	4,670.7	4,670.7	188.4	114.4	-89.91	-223.4	-3,901.8	613.7	310.9	302.76	2.027 ES, SF	
11,600.0	4,655.0	4,665.0	4,665.0	192.0	114.3	-89.38	-223.4	-3,901.8	624.6	318.4	306.18	2.040	
11,700.0	4,649.4	4,659.4	4,659.4	195.6	114.2	-88.85	-223.4	-3,901.8	650.8	341.2	309.59	2.102	
11,800.0	4,643.7	4,653.7	4,653.7	199.2	114.0	-88.32	-223.4	-3,901.8	690.5	377.6	312.97	2.206	
11,900.0	4,638.0	4,648.0	4,648.0	202.8	113.9	-87.79	-223.4	-3,901.8	741.7	425.4	316.34	2.345	

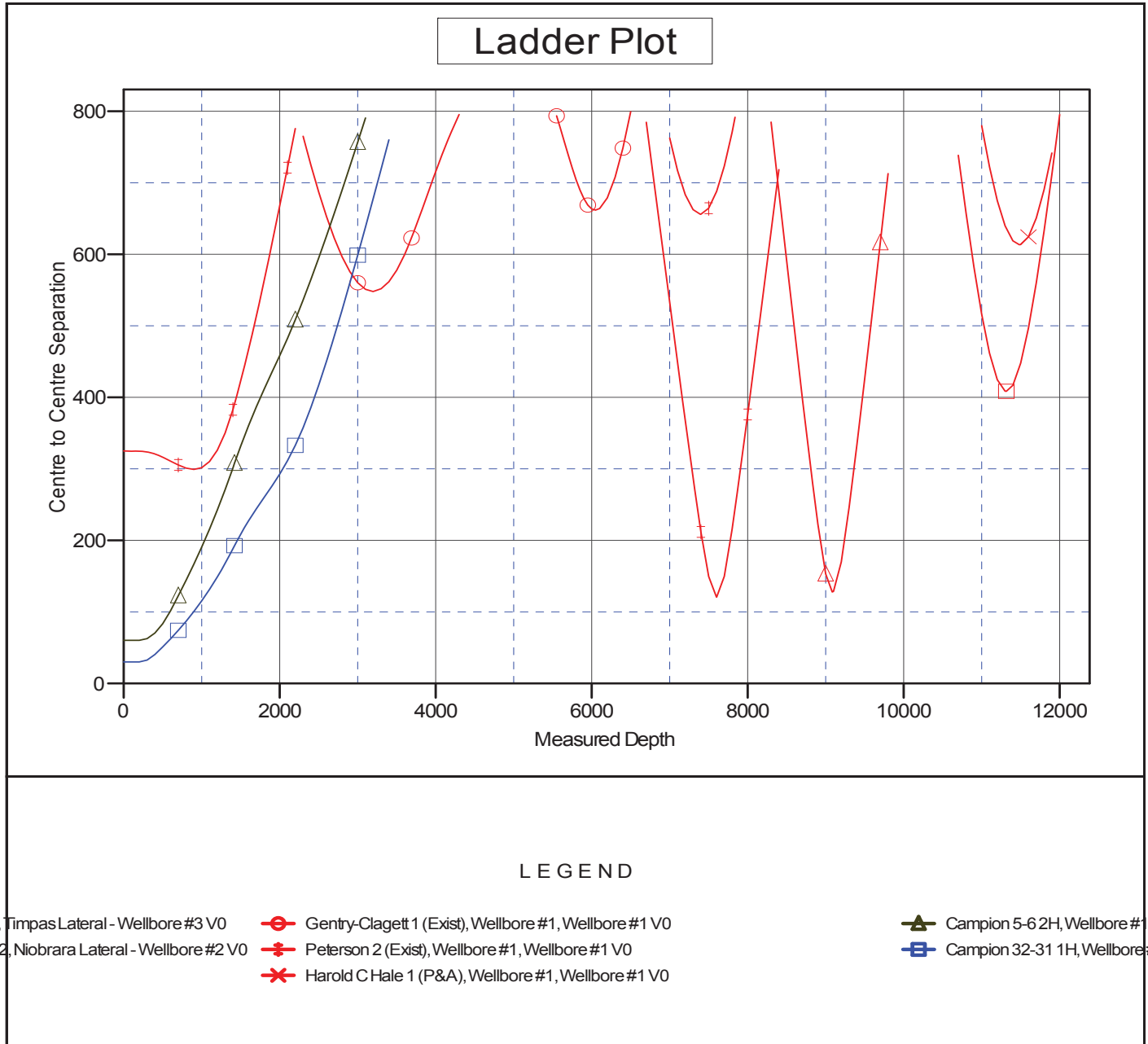
Company:	Magpie Operating, Inc.	Local Co-ordinate Reference:	Well Campion 5-6 1H
Project:	SEC.5-T4N-R68W	TVD Reference:	WELL @ 5084.0ft (Original Well Elev)
Reference Site:	Campion Pad Sec.5-T4N-R68W	MD Reference:	WELL @ 5084.0ft (Original Well Elev)
Site Error:	0.0 ft	North Reference:	True
Reference Well:	Campion 5-6 1H	Survey Calculation Method:	Minimum Curvature
Well Error:	0.0 ft	Output errors are at	2.45 sigma
Reference Wellbore	Wellbore #1	Database:	US_EDM
Reference Design:	Plan #1 (4-05-18)	Offset TVD Reference:	Offset Datum

Offset Design Existing Wells Sec.5, 6, 31, 32-T4N-R68W - Peterson 2 (Exist) - Wellbore #1 - Wellbore #1													Offset Site Error:	0.0 ft
Survey Program: 5675-UNKNOWN													Offset Well Error:	0.0 ft
Reference		Offset		Semi Major Axis			Distance							Warning
Measured Depth (ft)	Vertical Depth (ft)	Measured Depth (ft)	Vertical Depth (ft)	Reference (ft)	Offset (ft)	Highside Toolface (°)	Offset Wellbore Centre +N/-S (ft)	+E/-W (ft)	Between Centres (ft)	Between Ellipses (ft)	Minimum Separation (ft)	Separation Factor		
0.0	0.0	0.0	0.0	0.0	0.0	146.68	-271.4	178.4	325.2					
100.0	100.0	84.0	84.0	0.1	2.1	146.68	-271.4	178.4	324.8	322.6	2.20	147.907		
200.0	200.0	184.0	184.0	0.4	4.5	146.68	-271.4	178.4	324.8	319.9	4.92	65.998		
300.0	300.0	284.0	284.0	0.7	7.0	67.58	-271.4	178.4	323.8	316.1	7.64	42.390		
400.0	399.6	383.6	383.6	1.0	9.4	68.95	-271.4	178.4	320.9	310.5	10.39	30.877		
500.0	498.8	482.8	482.8	1.5	11.8	71.27	-271.4	178.4	316.4	303.1	13.25	23.872		
600.0	597.1	581.1	581.1	2.1	14.2	74.55	-271.4	178.4	311.0	294.7	16.27	19.107		
700.0	694.3	678.3	678.3	2.9	16.6	78.83	-271.4	178.4	305.4	286.0	19.48	15.679		
800.0	790.2	774.2	774.2	3.9	19.0	84.05	-271.4	178.4	301.0	278.2	22.87	13.160		
898.4	882.9	866.9	866.9	5.1	21.2	90.00	-271.4	178.4	299.2	272.9	26.36	11.353 CC		
900.0	884.4	868.4	868.4	5.1	21.3	90.11	-271.4	178.4	299.2	272.8	26.41	11.329		
1,000.0	976.8	960.8	960.8	6.5	23.5	96.76	-271.4	178.4	301.8	271.7	30.01	10.056 ES		
1,100.0	1,067.1	1,051.1	1,051.1	8.1	25.8	103.70	-271.4	178.4	310.2	276.7	33.52	9.256		
1,200.0	1,154.9	1,138.9	1,138.9	9.8	27.9	110.56	-271.4	178.4	326.1	289.3	36.80	8.862		
1,300.0	1,240.2	1,224.2	1,224.2	11.8	30.0	117.01	-271.4	178.4	350.2	310.4	39.73	8.813		
1,400.0	1,322.6	1,306.6	1,306.6	13.8	32.0	122.81	-271.4	178.4	382.7	340.4	42.28	9.051		
1,421.5	1,339.9	1,323.9	1,323.9	14.3	32.4	123.96	-271.4	178.4	390.7	347.9	42.77	9.134		
1,500.0	1,402.9	1,386.9	1,386.9	16.0	34.0	128.63	-271.4	178.4	422.4	377.9	44.50	9.491		
1,600.0	1,483.1	1,467.1	1,467.1	18.2	35.9	133.81	-271.4	178.4	466.4	419.9	46.52	10.026		
1,700.0	1,563.4	1,547.4	1,547.4	20.5	37.9	138.22	-271.4	178.4	513.6	465.2	48.39	10.613		
1,800.0	1,643.6	1,627.6	1,627.6	22.7	39.9	141.99	-271.4	178.4	563.2	513.0	50.19	11.221		
1,900.0	1,723.8	1,707.8	1,707.8	24.9	41.8	145.21	-271.4	178.4	614.6	562.6	51.95	11.831		
2,000.0	1,804.1	1,788.1	1,788.1	27.1	43.8	147.98	-271.4	178.4	667.3	613.7	53.69	12.429		
2,100.0	1,884.3	1,868.3	1,868.3	29.3	45.8	150.39	-271.4	178.4	721.2	665.8	55.43	13.010		
2,200.0	1,964.6	1,948.6	1,948.6	31.5	47.7	152.48	-271.4	178.4	775.9	718.7	57.19	13.567		
7,000.0	4,976.1	4,960.1	4,960.1	62.6	121.5	-94.72	-271.4	178.4	762.8	579.7	183.11	4.166		
7,100.0	4,962.2	4,946.2	4,946.2	63.7	121.2	-93.52	-271.4	178.4	717.3	533.2	184.18	3.895		
7,200.0	4,948.2	4,932.2	4,932.2	65.0	120.8	-92.32	-271.4	178.4	683.3	498.0	185.36	3.687		
7,300.0	4,934.3	4,918.3	4,918.3	66.4	120.5	-91.12	-271.4	178.4	662.5	475.9	186.64	3.550		
7,392.9	4,921.4	4,905.4	4,905.4	68.0	120.2	-90.00	-271.4	178.4	656.1	468.2	187.92	3.491		
7,400.0	4,920.4	4,904.4	4,904.4	68.1	120.2	-89.91	-271.4	178.4	656.1	468.1	188.01	3.490 SF		
7,500.0	4,906.5	4,890.5	4,890.5	69.9	119.8	-88.71	-271.4	178.4	664.6	475.1	189.46	3.508		
7,602.4	4,892.2	4,876.2	4,876.2	71.9	119.5	-87.48	-271.4	178.4	688.1	497.1	191.01	3.602		
7,700.0	4,880.3	4,864.3	4,864.3	72.0	119.2	-87.20	-271.4	178.4	723.2	532.4	190.84	3.790		
7,800.0	4,871.5	4,855.5	4,855.5	70.4	119.0	-87.51	-271.4	178.4	770.4	581.4	189.03	4.076		
7,839.4	4,869.0	4,853.0	4,853.0	69.7	118.9	-87.80	-271.4	178.4	791.7	603.3	188.41	4.202		

Company:	Maggie Operating, Inc.	Local Co-ordinate Reference:	Well Campion 5-6 1H
Project:	SEC.5-T4N-R68W	TVD Reference:	WELL @ 5084.0ft (Original Well Elev)
Reference Site:	Campion Pad Sec.5-T4N-R68W	MD Reference:	WELL @ 5084.0ft (Original Well Elev)
Site Error:	0.0 ft	North Reference:	True
Reference Well:	Campion 5-6 1H	Survey Calculation Method:	Minimum Curvature
Well Error:	0.0 ft	Output errors are at	2.45 sigma
Reference Wellbore	Wellbore #1	Database:	US_EDM
Reference Design:	Plan #1 (4-05-18)	Offset TVD Reference:	Offset Datum

Reference Depths are relative to WELL @ 5084.0ft (Original Well Elev)
Offset Depths are relative to Offset Datum
Central Meridian is -105.500000

Coordinates are relative to: Campion 5-6 1H
Coordinate System is US State Plane 1983, Colorado Northern Zone
Grid Convergence at Surface is: 0.30°



Company:	Maggie Operating, Inc.	Local Co-ordinate Reference:	Well Campion 5-6 1H
Project:	SEC.5-T4N-R68W	TVD Reference:	WELL @ 5084.0ft (Original Well Elev)
Reference Site:	Campion Pad Sec.5-T4N-R68W	MD Reference:	WELL @ 5084.0ft (Original Well Elev)
Site Error:	0.0 ft	North Reference:	True
Reference Well:	Campion 5-6 1H	Survey Calculation Method:	Minimum Curvature
Well Error:	0.0 ft	Output errors are at	2.45 sigma
Reference Wellbore	Wellbore #1	Database:	US_EDM
Reference Design:	Plan #1 (4-05-18)	Offset TVD Reference:	Offset Datum

Reference Depths are relative to WELL @ 5084.0ft (Original Well Elev)

Offset Depths are relative to Offset Datum

Central Meridian is -105.500000

Coordinates are relative to: Campion 5-6 1H

Coordinate System is US State Plane 1983, Colorado Northern Zone

Grid Convergence at Surface is: 0.30°

