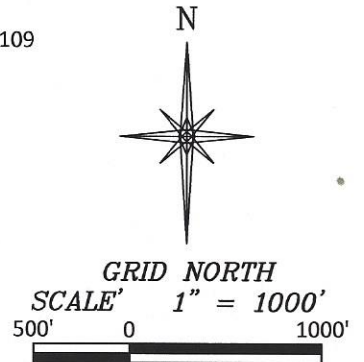
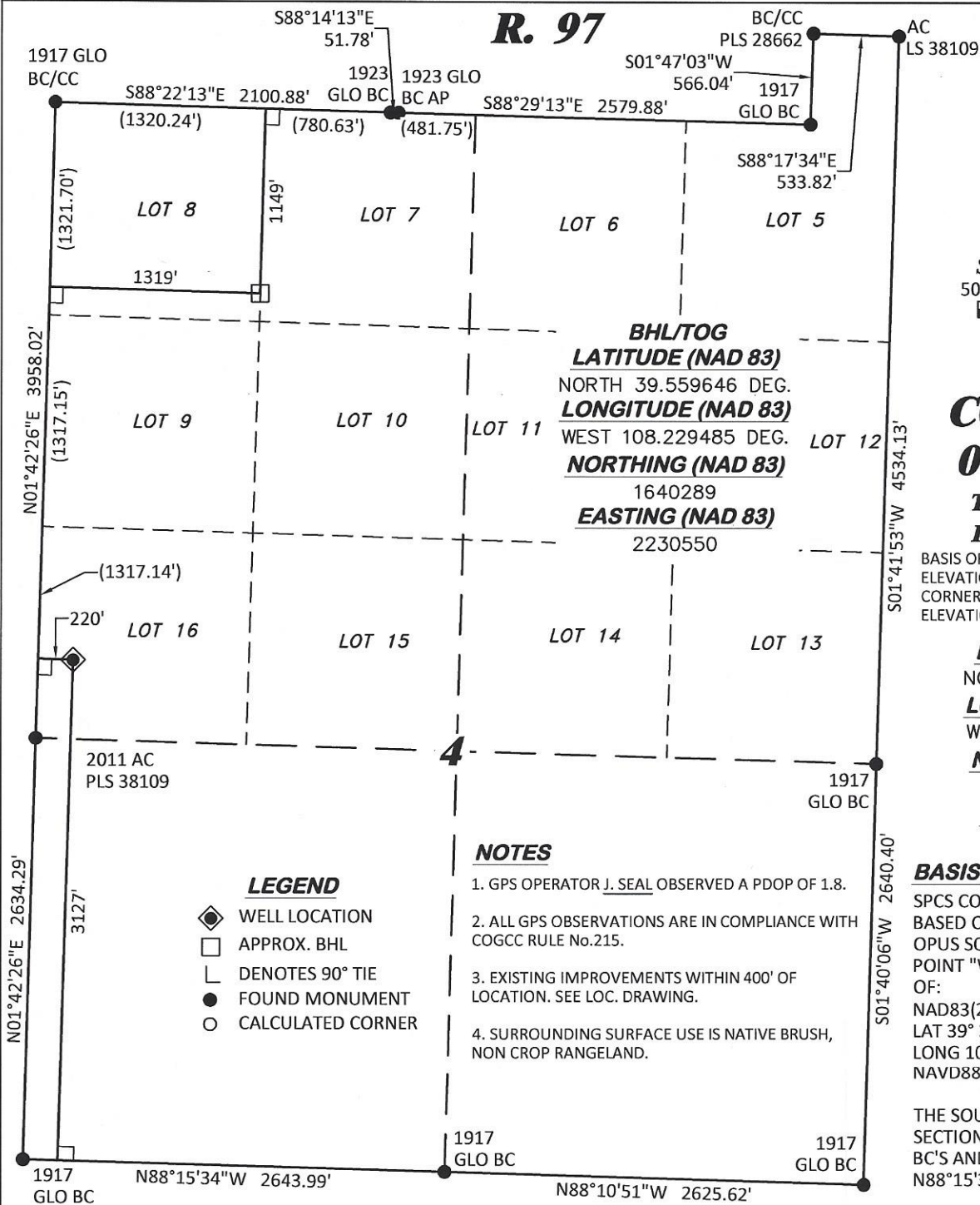


**R. 97**



**T. 6 S.**

**CC FEDERAL  
0697-04-05W**

**TOP OF CONCRETE  
ELEVATION: 8528.8'**

BASIS OF ELEVATION: USGS SPOT  
ELEVATION LOCATED AT THE SE  
CORNER OF SECTION 4, T6S, R97W  
ELEVATION: 8387' **SHL**

**LATITUDE (NAD 83)**  
NORTH 39.553287 DEG.  
**LONGITUDE (NAD 83)**  
WEST 108.233383 DEG.  
**NORTHING (NAD 83)**  
1638007.27  
**EASTING (NAD 83)**  
2229382.14

**BASIS OF BEARING/DATUM**

SPCS COLORADO CENTRAL NAD 27  
BASED ON GPS OBSERVATIONS AND  
OPUS SOLUTION ON DRG CONTROL  
POINT "WILLIAMS" HAVING A POSITION  
OF:  
NAD83(2011)  
LAT 39° 31' 35.18" NORTH  
LONG 108° 12' 16.79" WEST  
NAVD88 ELEVATION: 8618.14'

THE SOUTH LINE OF THE SW¼ OF  
SECTION 4, MONUMENTED BY BLM  
BC'S AND BEARING  
N88°15'34"W.

**NOTES**

1. GPS OPERATOR J. SEAL OBSERVED A PDOP OF 1.8.
2. ALL GPS OBSERVATIONS ARE IN COMPLIANCE WITH COGCC RULE No.215.
3. EXISTING IMPROVEMENTS WITHIN 400' OF LOCATION. SEE LOC. DRAWING.
4. SURROUNDING SURFACE USE IS NATIVE BRUSH, NON CROP RANGELAND.

**LEGEND**

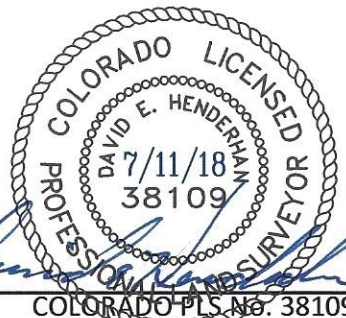
- ◆ WELL LOCATION
- APPROX. BHL
- └ DENOTES 90° TIE
- FOUND MONUMENT
- CALCULATED CORNER

**SURVEYOR'S STATEMENT**

I, DAVID E. HENDERHAN, AN EMPLOYEE AND AGENT ON BEHALF OF D.R. GRIFFIN & ASSOCIATES, INC. STATE THE PLAT HEREON IS A CORRECT REPRESENTATION OF A SURVEY MADE UNDER MY SUPERVISION ON THE 13th DAY OF JANUARY, 2012 OF THE SHOWN CC FEDERAL 0697-04-05W AS-DRILLED CONDUCTOR.

Notice: In accordance with Colorado State Law, any legal action based upon any defect in this survey plat must commence within three (3) years after first discovery of such defect. In no event, may any action based upon any defect in this survey plat be commenced more than ten (10) years from the date of certification shown hereon.

**CC 604-12-13 ANNEX PAD**



COLORADO PLS No. 38109

**DRG** RIFFIN & ASSOCIATES, INC.  
(307) 362-5028 1414 ELK ST., ROCK SPRINGS, WY 82901

**PLAT OF AS-DRILLED CONDUCTOR  
IN LOT 16, SECTION 4, FOR  
LARAMIE ENERGY, LLC.**

**DRAWN: 12/26/2017 - DEH**

**SCALE: 1" = 1000'**

**REVISED: 7/11/2018 - TCM**

**DRG JOB No. 21376**

**MISC. REVISIONS**

**A6-04-05W**

**3127' F/SL, & 220' F/WL, SECTION 4,  
T. 6 S., R. 97, 6TH P.M.,  
GARFIELD COUNTY, COLORADO**