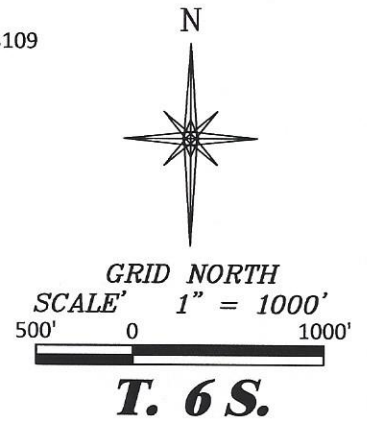
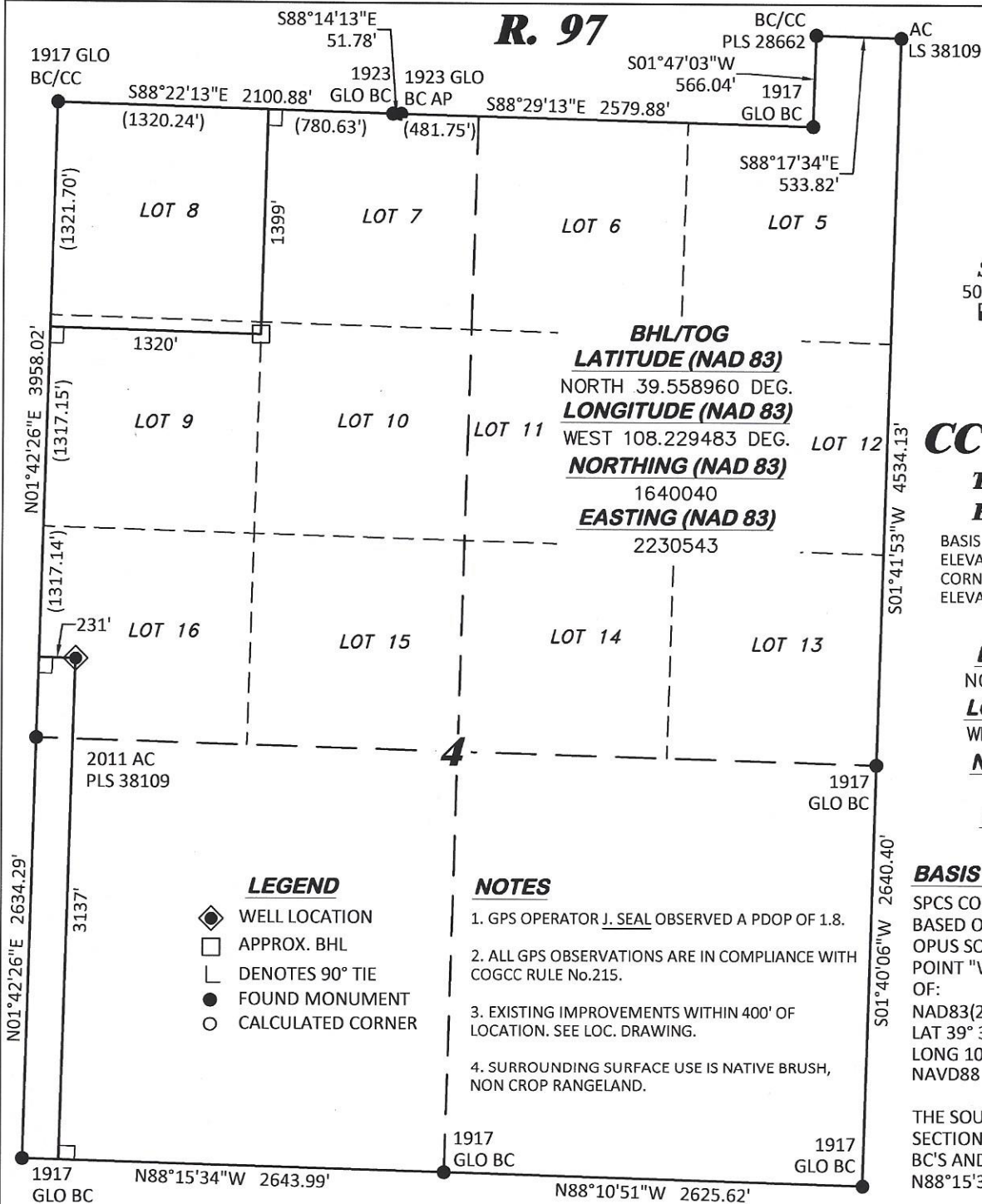


R. 97**CC 0697-04-06W**

**TOP OF CONCRETE
ELEVATION: 8527.9'**

BASIS OF ELEVATION: USGS SPOT
ELEVATION LOCATED AT THE SE
CORNER OF SECTION 4, T6S, R97W
ELEVATION: 8387'

SHL
LATITUDE (NAD 83)
NORTH 39.553314 DEG.
LONGITUDE (NAD 83)
WEST 108.233344 DEG.
NORTHING (NAD 83)
1640040
EASTING (NAD 83)
2230543

BASIS OF BEARING/DATUM

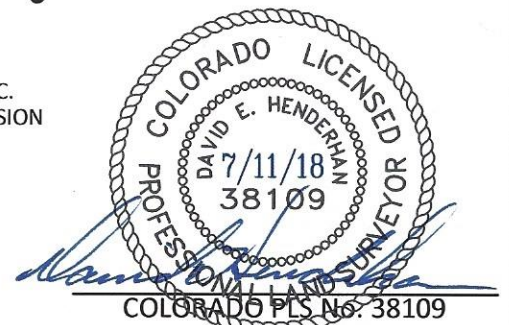
SPCS COLORADO CENTRAL NAD 27
BASED ON GPS OBSERVATIONS AND
OPUS SOLUTION ON DRG CONTROL
POINT "WILLIAMS" HAVING A POSITION
OF:
NAD83(2011)
LAT 39° 31' 35.18" NORTH
LONG 108° 12' 16.79" WEST
NAVD88 ELEVATION: 8618.14'

THE SOUTH LINE OF THE SW¼ OF
SECTION 4, MONUMENTED BY BLM
BC'S AND BEARING
N88°15'34"W.

SURVEYOR'S STATEMENT

I, DAVID E. HENDERHAN, AN EMPLOYEE AND AGENT ON BEHALF OF D.R. GRIFFIN & ASSOCIATES, INC.
STATE THE PLAT HEREON IS A CORRECT REPRESENTATION OF A SURVEY MADE UNDER MY SUPERVISION
ON THE 13th DAY OF JANUARY, 2012 OF THE SHOWN CC 0697-04-06W AS-DRILLED CONDUCTOR.

Notice: In accordance with Colorado State Law, any legal action based
upon any defect in this survey plat must commence within three (3)
years after first discovery of such defect. In no event, may any action
based upon any defect in this survey plat be commenced more than ten
(10) years from the date of certification shown hereon.

CC 604-12-13 ANNEX PAD

DRG RIFFIN & ASSOCIATES, INC.
(307) 362-5028 1414 ELK ST., ROCK SPRINGS, WY 82901

**PLAT OF AS-DRILLED CONDUCTOR
IN LOT 16, SECTION 4, FOR
LARAMIE ENERGY, LLC.**

DRAWN: 12/26/2017 - DEH

SCALE: 1" = 1000'

REVISED: 7/11/2018 - TCM

DRG JOB No. 21376

MISC. REVISIONS

A8-04-06W

**3137' F/SL, & 231' F/WL, SECTION 4,
T. 6 S., R. 97, 6TH P.M.,
GARFIELD COUNTY, COLORADO**