



Project: Weld County, CO NAD 83  
Site: Anschutz State 5-62-26\_25 SE27 PAD [GOOD]  
Well: Anschutz State 5-62-26-3340C  
Wellbore: OH  
Design: OH



WELL DETAILS: Anschutz State 5-62-26-3340C

GL 4656.1' & KB 16.5' @ 4672.60ft (Cade 24) 4656.10  
Northing Easting Latitude Longitude  
1378929.53 3333926.49 40° 22' 2.528 N 104° 18' 5.641 W

Design: OH (Anschutz State 5-62-26-3340C/OH)

Created By: Seth Burstad

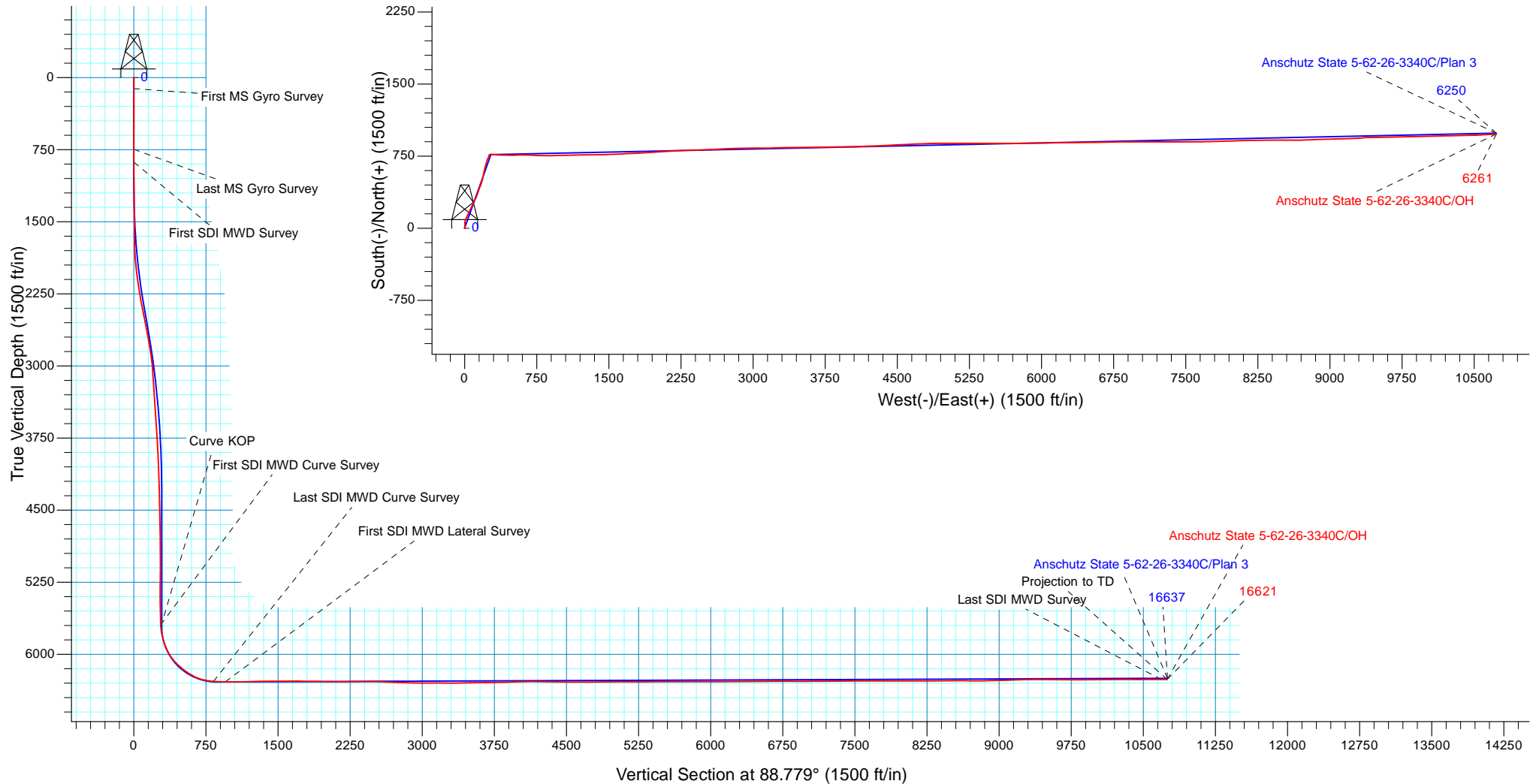
PROJECT DETAILS: Weld County, CO NAD 83

Geodetic System: US State Plane 1983  
Datum: North American Datum 1983  
Ellipsoid: GRS 1980  
Zone: Colorado Northern Zone

System Datum: Mean Sea Level  
Local North: True

ANNOTATIONS

TVD	MD	Inc	Azi	+N/-S	+E/-W	V	Sect	Departure	Annotation
116.50	116.50	0.50	359.860	0.51	0.00	0.01	0.51	First MS Gyro Survey	
747.48	747.50	0.28	192.880	4.97	0.07	0.18	5.76	Last MS Gyro Survey	
880.97	881.00	0.78	133.470	4.03	0.66	0.74	7.00	First SDI MWD Survey	
5694.29	5815.00	2.02	55.860	767.05	263.30	279.58	830.98	First SDI MWD Curve Survey	
5714.26	5835.00	4.09	76.506	767.41	264.28	280.57	833.50	Curve KOP	
6282.06	6696.00	86.20	89.750	754.42	811.87	827.76	1380.53	Last SDI MWD Curve Survey	
6286.46	6819.00	89.70	88.500	756.29	934.76	950.66	1503.43	First SDI MWD Lateral Survey	
6260.99	16559.00	89.93	86.440	977.58	10669.32	10687.73	11242.33	Last SDI MWD Survey	
6261.07	16621.00	89.93	86.440	981.43	10731.20	10749.67	11304.33	Projection to TD	





# HighPoint Resources

Weld County, CO NAD 83

Anschutz State 5-62-26\_25 SE27 PAD [GOOD]

Anschutz State 5-62-26-3340C

OH

Design: OH

## Standard Survey Report

16 April, 2018



<b>Company:</b>	HighPoint Resources	<b>Local Co-ordinate Reference:</b>	Well Anschutz State 5-62-26-3340C
<b>Project:</b>	Weld County, CO NAD 83	<b>TVD Reference:</b>	GL 4656.1' & KB 16.5' @ 4672.60ft (Cade 24)
<b>Site:</b>	Anschutz State 5-62-26_25 SE27 PAD [GOOD]	<b>MD Reference:</b>	GL 4656.1' & KB 16.5' @ 4672.60ft (Cade 24)
<b>Well:</b>	Anschutz State 5-62-26-3340C	<b>North Reference:</b>	True
<b>Wellbore:</b>	OH	<b>Survey Calculation Method:</b>	Minimum Curvature
<b>Design:</b>	OH	<b>Database:</b>	Casper District

<b>Project</b>	Weld County, CO NAD 83		
<b>Map System:</b>	US State Plane 1983	<b>System Datum:</b>	Mean Sea Level
<b>Geo Datum:</b>	North American Datum 1983		
<b>Map Zone:</b>	Colorado Northern Zone		

Site		Anschutz State 5-62-26_25 SE27 PAD [GOOD], Site Center : Anschutz State 5-62-26-3240C			
Site Position:		Northing:	1,378,943.80 usft	Latitude:	40° 22' 2.669 N
From:	Lat/Long	Easting:	3,333,926.31 usft	Longitude:	104° 18' 5.641 W
Position Uncertainty:	0.00 ft	Slot Radius:	13.200 in	Grid Convergence:	0.77 °

Well	Anschutz State 5-62-26-3340C, 1360' FSL 400' FEL Sec 27 T5N R62W					
Well Position	+N/-S	0.00 ft	Northing:	1,378,929.53 usft	Latitude:	40° 22' 2.528 N
	+E/-W	0.00 ft	Easting:	3,333,926.50 usft	Longitude:	104° 18' 5.641 W
Position Uncertainty		0.00 ft	Wellhead Elevation:	0.00 ft	Ground Level:	4,656.10 ft

<b>Wellbore</b>	OH				
<b>Magnetics</b>	<b>Model Name</b>	<b>Sample Date</b>	<b>Declination (°)</b>	<b>Dip Angle (°)</b>	<b>Field Strength (nT)</b>
	HDGM	9/18/2017	8.22	67.00	52,306

<b>Design</b>	OH				
<b>Audit Notes:</b>					
<b>Version:</b>	1.0	<b>Phase:</b>	ACTUAL	<b>Tie On Depth:</b>	0.00
<b>Vertical Section:</b>	<b>Depth From (TVD) (ft)</b>	<b>+N/-S (ft)</b>	<b>+E/-W (ft)</b>	<b>Direction (°)</b>	
	0.00	0.00	0.00	88.779	

<b>Survey Program</b>	<b>Date</b>	4/16/2018			
<b>From (ft)</b>	<b>To (ft)</b>	<b>Survey (Wellbore)</b>	<b>Tool Name</b>	<b>Description</b>	
116.50	747.50	Survey #2 - Surface Gyro (OH)	NS-GYRO-MS	North sensing gyrocompassing m/s	
881.00	6,696.00	Survey #3 - Intermediate (OH)	OWSG MWD	OWSG MWD - Standard	
6,819.00	16,621.00	Survey #4 - Lateral (OH)	OWSG MWD	OWSG MWD - Standard	

<b>Survey</b>										
<b>Measured Depth (ft)</b>	<b>Inclination (°)</b>	<b>Azimuth (°)</b>	<b>Vertical Depth (ft)</b>	<b>+N/-S (ft)</b>	<b>+E/-W (ft)</b>	<b>Vertical Section (ft)</b>	<b>Dogleg Rate (°/100ft)</b>	<b>Build Rate (°/100ft)</b>	<b>Turn Rate (°/100ft)</b>	
0.00	0.00	0.000	0.00	0.00	0.00	0.00	0.00	0.00	0.00	
116.50	0.50	359.860	116.50	0.51	0.00	0.01	0.43	0.43	0.00	
<b>First MS Gyro Survey</b>										
216.50	0.41	359.630	216.50	1.30	0.00	0.02	0.09	-0.09	-0.23	
316.50	0.59	359.260	316.49	2.18	-0.01	0.03	0.18	0.18	-0.37	
416.50	0.50	7.790	416.49	3.12	0.04	0.11	0.12	-0.09	8.53	
516.50	0.76	14.630	516.48	4.20	0.27	0.35	0.27	0.26	6.84	
616.50	0.30	332.380	616.48	5.07	0.31	0.42	0.57	-0.46	-42.25	
716.50	0.24	202.310	716.48	5.11	0.11	0.22	0.49	-0.06	-130.07	

<b>Company:</b>	HighPoint Resources	<b>Local Co-ordinate Reference:</b>	Well Anschutz State 5-62-26-3340C
<b>Project:</b>	Weld County, CO NAD 83	<b>TVD Reference:</b>	GL 4656.1' & KB 16.5' @ 4672.60ft (Cade 24)
<b>Site:</b>	Anschutz State 5-62-26_25 SE27 PAD [GOOD]	<b>MD Reference:</b>	GL 4656.1' & KB 16.5' @ 4672.60ft (Cade 24)
<b>Well:</b>	Anschutz State 5-62-26-3340C	<b>North Reference:</b>	True
<b>Wellbore:</b>	OH	<b>Survey Calculation Method:</b>	Minimum Curvature
<b>Design:</b>	OH	<b>Database:</b>	Casper District

Survey										
Measured Depth (ft)	Inclination (°)	Azimuth (°)	Vertical Depth (ft)	+N/-S (ft)	+E/-W (ft)	Vertical Section (ft)	Dogleg Rate (°/100ft)	Build Rate (°/100ft)	Turn Rate (°/100ft)	
747.50	0.28	192.880	747.48	4.97	0.07	0.18	0.19	0.13	-30.42	
Last MS Gyro Survey										
881.00	0.78	133.470	880.97	4.03	0.66	0.74	0.51	0.37	-44.50	
First SDI MWD Survey										
973.00	0.50	182.660	972.97	3.20	1.09	1.16	0.64	-0.30	53.47	
1,064.00	0.91	312.830	1,063.96	3.29	0.54	0.61	1.42	0.45	143.04	
1,155.00	2.76	16.420	1,154.92	5.89	0.63	0.76	2.74	2.03	69.88	
1,246.00	5.39	13.150	1,245.68	12.15	2.22	2.48	2.90	2.89	-3.59	
1,338.00	8.67	3.730	1,336.98	23.28	3.66	4.15	3.77	3.57	-10.24	
1,430.00	8.96	358.100	1,427.89	37.36	3.87	4.67	0.99	0.32	-6.12	
1,521.00	8.39	2.830	1,517.85	51.08	3.97	5.05	1.00	-0.63	5.20	
1,612.00	7.49	356.930	1,607.98	63.63	3.98	5.33	1.33	-0.99	-6.48	
1,704.00	6.91	6.850	1,699.26	75.11	4.31	5.91	1.49	-0.63	10.78	
1,795.00	7.46	17.470	1,789.55	86.18	6.74	8.58	1.58	0.60	11.67	
1,887.00	9.38	26.440	1,880.56	98.59	11.87	13.97	2.52	2.09	9.75	
1,978.00	13.11	26.720	1,969.79	114.46	19.82	22.25	4.10	4.10	0.31	
2,070.00	16.20	25.310	2,058.79	135.39	30.00	32.88	3.38	3.36	-1.53	
2,161.00	18.06	27.040	2,145.75	159.43	41.84	45.23	2.12	2.04	1.90	
2,252.00	19.39	25.850	2,231.93	185.59	54.84	58.78	1.52	1.46	-1.31	
2,343.00	21.49	24.700	2,317.20	214.33	68.39	72.94	2.35	2.31	-1.26	
2,437.00	23.03	26.530	2,404.19	246.42	83.80	89.03	1.80	1.64	1.95	
2,531.00	24.84	25.600	2,490.10	280.68	100.55	106.50	1.97	1.93	-0.99	
2,625.00	26.45	21.480	2,574.85	317.97	116.75	123.49	2.55	1.71	-4.38	
2,719.00	26.10	20.980	2,659.14	356.76	131.81	139.39	0.44	-0.37	-0.53	
2,813.00	25.46	20.640	2,743.78	394.98	146.34	154.72	0.70	-0.68	-0.36	
2,907.00	24.02	20.220	2,829.15	431.84	160.08	169.24	1.54	-1.53	-0.45	
3,001.00	20.63	20.810	2,916.09	465.28	172.57	182.45	3.61	-3.61	0.63	
3,094.00	18.58	13.690	3,003.71	495.00	181.90	192.41	3.38	-2.20	-7.66	
3,188.00	17.02	13.270	3,093.21	522.94	188.61	199.71	1.67	-1.66	-0.45	
3,282.00	15.30	11.620	3,183.49	548.48	194.26	205.91	1.89	-1.83	-1.76	
3,376.00	14.57	9.770	3,274.31	572.28	198.77	210.92	0.93	-0.78	-1.97	
3,469.00	13.40	13.070	3,364.56	594.30	203.19	215.81	1.52	-1.26	3.55	
3,562.00	13.80	10.250	3,454.95	615.72	207.60	220.67	0.83	0.43	-3.03	
3,656.00	14.71	17.920	3,546.06	638.11	213.27	226.82	2.23	0.97	8.16	
3,750.00	15.04	17.260	3,636.91	661.11	220.56	234.60	0.39	0.35	-0.70	
3,843.00	12.58	16.370	3,727.22	682.35	226.99	241.48	2.65	-2.65	-0.96	
3,937.00	9.87	13.150	3,819.41	700.02	231.71	246.58	2.96	-2.88	-3.43	
4,031.00	7.84	20.550	3,912.29	713.87	235.80	250.96	2.47	-2.16	7.87	
4,124.00	5.54	31.510	4,004.65	723.64	240.37	255.74	2.82	-2.47	11.78	
4,218.00	3.33	30.360	4,098.37	729.87	244.12	259.62	2.35	-2.35	-1.22	
4,312.00	2.90	23.430	4,192.23	734.40	246.45	262.04	0.61	-0.46	-7.37	
4,406.00	2.75	17.760	4,286.11	738.73	248.08	263.77	0.34	-0.16	-6.03	
4,499.00	3.57	27.760	4,378.97	743.42	250.11	265.89	1.06	0.88	10.75	
4,593.00	3.62	21.610	4,472.79	748.77	252.57	268.46	0.41	0.05	-6.54	

<b>Company:</b>	HighPoint Resources	<b>Local Co-ordinate Reference:</b>	Well Anschutz State 5-62-26-3340C
<b>Project:</b>	Weld County, CO NAD 83	<b>TVD Reference:</b>	GL 4656.1' & KB 16.5' @ 4672.60ft (Cade 24)
<b>Site:</b>	Anschutz State 5-62-26_25 SE27 PAD [GOOD]	<b>MD Reference:</b>	GL 4656.1' & KB 16.5' @ 4672.60ft (Cade 24)
<b>Well:</b>	Anschutz State 5-62-26-3340C	<b>North Reference:</b>	True
<b>Wellbore:</b>	OH	<b>Survey Calculation Method:</b>	Minimum Curvature
<b>Design:</b>	OH	<b>Database:</b>	Casper District

Survey									
Measured Depth (ft)	Inclination (°)	Azimuth (°)	Vertical Depth (ft)	+N/-S (ft)	+E/-W (ft)	Vertical Section (ft)	Dogleg Rate (°/100ft)	Build Rate (°/100ft)	Turn Rate (°/100ft)
4,687.00	3.77	20.190	4,566.59	754.43	254.73	270.74	0.19	0.16	-1.51
4,781.00	2.49	21.120	4,660.45	759.23	256.53	272.65	1.36	-1.36	0.99
4,875.00	0.73	69.760	4,754.41	761.35	257.83	273.99	2.21	-1.87	51.74
4,969.00	0.67	78.670	4,848.40	761.66	258.93	275.10	0.13	-0.06	9.48
5,063.00	0.43	78.910	4,942.40	761.84	259.81	275.99	0.26	-0.26	0.26
5,157.00	0.17	135.910	5,036.40	761.81	260.25	276.43	0.39	-0.28	60.64
5,251.00	0.89	306.590	5,130.40	762.14	259.77	275.95	1.13	0.77	181.57
5,345.00	0.81	299.750	5,224.39	762.91	258.60	274.80	0.14	-0.09	-7.28
5,439.00	0.84	301.850	5,318.38	763.60	257.44	273.65	0.05	0.03	2.23
5,533.00	0.77	73.850	5,412.37	764.14	257.46	273.69	1.56	-0.07	140.43
5,627.00	1.07	72.420	5,506.36	764.58	258.91	275.14	0.32	0.32	-1.52
5,721.00	1.54	59.770	5,600.34	765.48	260.83	277.09	0.58	0.50	-13.46
5,815.00	2.02	55.860	5,694.29	767.05	263.30	279.58	0.53	0.51	-4.16
First SDI MWD Curve Survey									
5,835.00	4.09	76.506	5,714.26	767.41	264.28	280.57	11.56	10.35	103.23
Curve KOP									
5,909.00	12.51	88.720	5,787.42	768.21	274.88	291.19	11.56	11.38	16.51
6,003.00	17.46	93.040	5,878.20	767.69	299.16	315.45	5.39	5.27	4.60
6,097.00	26.47	95.620	5,965.29	764.88	334.16	350.38	9.64	9.59	2.74
6,191.00	37.39	94.180	6,044.95	760.74	383.62	399.75	11.64	11.62	-1.53
6,285.00	47.36	89.410	6,114.32	759.01	446.84	462.91	11.14	10.61	-5.07
6,378.00	53.76	87.170	6,173.38	761.21	518.58	534.68	7.13	6.88	-2.41
6,472.00	60.73	90.290	6,224.21	762.88	597.55	613.67	7.92	7.41	3.32
6,566.00	73.98	91.590	6,260.32	761.41	684.10	700.17	14.15	14.10	1.38
6,597.00	78.76	93.680	6,267.63	760.02	714.18	730.21	16.75	15.42	6.74
6,660.00	81.76	94.330	6,278.28	755.68	776.11	792.04	4.87	4.76	1.03
6,696.00	86.20	89.750	6,282.06	754.42	811.87	827.76	17.67	12.33	-12.72
Last SDI MWD Curve Survey									
6,819.00	89.70	88.500	6,286.46	756.29	934.76	950.66	3.02	2.85	-1.02
First SDI MWD Lateral Survey									
6,913.00	89.03	88.170	6,287.50	759.03	1,028.71	1,044.65	0.79	-0.71	-0.35
7,007.00	91.71	89.390	6,286.90	761.03	1,122.68	1,138.64	3.13	2.85	1.30
7,101.00	91.37	88.710	6,284.37	762.58	1,216.63	1,232.60	0.81	-0.36	-0.72
7,194.00	91.28	89.570	6,282.22	763.98	1,309.59	1,325.58	0.93	-0.10	0.92
7,288.00	90.57	88.350	6,280.70	765.69	1,403.56	1,419.56	1.50	-0.76	-1.30
7,382.00	90.10	88.060	6,280.15	768.63	1,497.52	1,513.56	0.59	-0.50	-0.31
7,475.00	90.87	88.190	6,279.36	771.67	1,590.46	1,606.55	0.84	0.83	0.14
7,569.00	88.52	87.180	6,279.86	775.47	1,684.38	1,700.52	2.72	-2.50	-1.07
7,663.00	89.19	86.960	6,281.74	780.27	1,778.23	1,794.46	0.75	0.71	-0.23
7,757.00	89.73	86.970	6,282.63	785.25	1,872.10	1,888.41	0.57	0.57	0.01
7,850.00	88.89	86.290	6,283.75	790.72	1,964.93	1,981.33	1.16	-0.90	-0.73
7,944.00	89.23	86.400	6,285.29	796.71	2,058.73	2,075.23	0.38	0.36	0.12
8,038.00	89.70	85.630	6,286.17	803.24	2,152.49	2,169.12	0.96	0.50	-0.82
8,132.00	91.44	88.040	6,285.23	808.43	2,246.33	2,263.05	3.16	1.85	2.56

<b>Company:</b>	HighPoint Resources	<b>Local Co-ordinate Reference:</b>	Well Anschutz State 5-62-26-3340C
<b>Project:</b>	Weld County, CO NAD 83	<b>TVD Reference:</b>	GL 4656.1' & KB 16.5' @ 4672.60ft (Cade 24)
<b>Site:</b>	Anschutz State 5-62-26_25 SE27 PAD [GOOD]	<b>MD Reference:</b>	GL 4656.1' & KB 16.5' @ 4672.60ft (Cade 24)
<b>Well:</b>	Anschutz State 5-62-26-3340C	<b>North Reference:</b>	True
<b>Wellbore:</b>	OH	<b>Survey Calculation Method:</b>	Minimum Curvature
<b>Design:</b>	OH	<b>Database:</b>	Casper District

Survey									
Measured Depth (ft)	Inclination (°)	Azimuth (°)	Vertical Depth (ft)	+N/-S (ft)	+E/-W (ft)	Vertical Section (ft)	Dogleg Rate (°/100ft)	Build Rate (°/100ft)	Turn Rate (°/100ft)
8,225.00	90.27	88.610	6,283.85	811.15	2,339.28	2,356.04	1.40	-1.26	0.61
8,319.00	89.70	88.200	6,283.87	813.76	2,433.25	2,450.03	0.75	-0.61	-0.44
8,413.00	87.95	87.440	6,285.80	817.34	2,527.15	2,544.00	2.03	-1.86	-0.81
8,506.00	88.05	87.310	6,289.04	821.60	2,620.00	2,636.91	0.18	0.11	-0.14
8,600.00	87.69	87.130	6,292.54	826.15	2,713.82	2,730.81	0.43	-0.38	-0.19
8,694.00	88.12	88.160	6,295.97	830.01	2,807.68	2,824.73	1.19	0.46	1.10
8,787.00	89.23	88.760	6,298.12	832.51	2,900.62	2,917.70	1.36	1.19	0.65
8,882.00	89.90	89.850	6,298.85	833.66	2,995.61	3,012.69	1.35	0.71	1.15
8,976.00	90.13	89.590	6,298.82	834.12	3,089.61	3,106.68	0.37	0.24	-0.28
9,069.00	89.43	89.280	6,299.18	835.04	3,182.60	3,199.67	0.82	-0.75	-0.33
9,163.00	90.10	87.530	6,299.56	837.65	3,276.56	3,293.66	1.99	0.71	-1.86
9,257.00	90.81	89.920	6,298.82	839.75	3,370.53	3,387.65	2.65	0.76	2.54
9,350.00	90.84	89.910	6,297.48	839.88	3,463.52	3,480.63	0.03	0.03	-0.01
9,443.00	91.01	88.750	6,295.98	840.97	3,556.50	3,573.61	1.26	0.18	-1.25
9,537.00	90.97	89.330	6,294.35	842.55	3,650.47	3,667.59	0.62	-0.04	0.62
9,631.00	91.24	89.100	6,292.54	843.83	3,744.44	3,761.57	0.38	0.29	-0.24
9,725.00	91.21	89.460	6,290.53	845.01	3,838.41	3,855.55	0.38	-0.03	0.38
9,819.00	91.07	88.210	6,288.66	846.93	3,932.37	3,949.53	1.34	-0.15	-1.33
9,913.00	92.28	88.820	6,285.91	849.36	4,026.30	4,043.48	1.44	1.29	0.65
10,007.00	90.87	89.250	6,283.33	850.94	4,120.25	4,137.44	1.57	-1.50	0.46
10,101.00	88.32	87.840	6,283.99	853.33	4,214.20	4,231.43	3.10	-2.71	-1.50
10,196.00	88.99	87.910	6,286.22	856.85	4,309.11	4,326.39	0.71	0.71	0.07
10,289.00	88.93	86.500	6,287.91	861.38	4,401.98	4,419.34	1.52	-0.06	-1.52
10,383.00	89.36	87.080	6,289.31	866.65	4,495.83	4,513.27	0.77	0.46	0.62
10,477.00	89.66	87.460	6,290.12	871.12	4,589.72	4,607.24	0.52	0.32	0.40
10,568.00	89.90	86.800	6,290.47	875.68	4,680.60	4,698.20	0.77	0.26	-0.73
10,659.00	90.57	88.120	6,290.09	879.71	4,771.51	4,789.17	1.63	0.74	1.45
10,751.00	90.91	87.870	6,288.91	882.93	4,863.44	4,881.15	0.46	0.37	-0.27
10,842.00	91.14	89.300	6,287.28	885.18	4,954.40	4,972.14	1.59	0.25	1.57
10,933.00	89.77	91.090	6,286.55	884.87	5,045.39	5,063.10	2.48	-1.51	1.97
11,025.00	89.83	90.620	6,286.88	883.50	5,137.38	5,155.04	0.52	0.07	-0.51
11,116.00	90.03	90.570	6,286.99	882.55	5,228.37	5,245.99	0.23	0.22	-0.05
11,207.00	90.30	90.290	6,286.73	881.87	5,319.37	5,336.95	0.43	0.30	-0.31
11,298.00	91.17	88.650	6,285.56	882.71	5,410.35	5,427.94	2.04	0.96	-1.80
11,389.00	90.07	89.640	6,284.57	884.07	5,501.34	5,518.93	1.63	-1.21	1.09
11,481.00	90.30	90.910	6,284.28	883.63	5,593.33	5,610.89	1.40	0.25	1.38
11,572.00	90.00	90.940	6,284.04	882.16	5,684.32	5,701.83	0.33	-0.33	0.03
11,663.00	90.00	89.360	6,284.04	881.92	5,775.32	5,792.80	1.74	0.00	-1.74
11,755.00	90.13	88.270	6,283.93	883.82	5,867.30	5,884.80	1.19	0.14	-1.18
11,846.00	89.36	88.360	6,284.34	886.50	5,958.26	5,975.79	0.85	-0.85	0.10
11,938.00	90.34	89.590	6,284.58	888.14	6,050.24	6,067.79	1.71	1.07	1.34
12,029.00	89.53	88.770	6,284.68	889.44	6,141.23	6,158.79	1.27	-0.89	-0.90
12,121.00	90.60	89.780	6,284.58	890.61	6,233.22	6,250.78	1.60	1.16	1.10

<b>Company:</b>	HighPoint Resources	<b>Local Co-ordinate Reference:</b>	Well Anschutz State 5-62-26-3340C
<b>Project:</b>	Weld County, CO NAD 83	<b>TVD Reference:</b>	GL 4656.1' & KB 16.5' @ 4672.60ft (Cade 24)
<b>Site:</b>	Anschutz State 5-62-26_25 SE27 PAD [GOOD]	<b>MD Reference:</b>	GL 4656.1' & KB 16.5' @ 4672.60ft (Cade 24)
<b>Well:</b>	Anschutz State 5-62-26-3340C	<b>North Reference:</b>	True
<b>Wellbore:</b>	OH	<b>Survey Calculation Method:</b>	Minimum Curvature
<b>Design:</b>	OH	<b>Database:</b>	Casper District

Survey										
Measured Depth (ft)	Inclination (°)	Azimuth (°)	Vertical Depth (ft)	+N/-S (ft)	+E/-W (ft)	Vertical Section (ft)	Dogleg Rate (°/100ft)	Build Rate (°/100ft)	Turn Rate (°/100ft)	
12,212.00	90.23	89.290	6,283.92	891.35	6,324.21	6,341.77	0.67	-0.41	-0.54	
12,303.00	90.50	89.160	6,283.34	892.58	6,415.20	6,432.76	0.33	0.30	-0.14	
12,395.00	91.48	89.190	6,281.75	893.90	6,507.18	6,524.75	1.07	1.07	0.03	
12,486.00	90.60	89.850	6,280.10	894.67	6,598.16	6,615.72	1.21	-0.97	0.73	
12,577.00	90.07	89.030	6,279.57	895.55	6,689.15	6,706.71	1.07	-0.58	-0.90	
12,668.00	88.69	88.230	6,280.55	897.73	6,780.12	6,797.71	1.75	-1.52	-0.88	
12,760.00	89.63	89.570	6,281.90	899.50	6,872.09	6,889.69	1.78	1.02	1.46	
12,851.00	90.64	90.340	6,281.69	899.57	6,963.08	6,980.67	1.40	1.11	0.85	
12,942.00	89.87	90.850	6,281.28	898.62	7,054.08	7,071.62	1.01	-0.85	0.56	
13,033.00	91.14	89.440	6,280.48	898.39	7,145.07	7,162.59	2.09	1.40	-1.55	
13,124.00	90.54	90.810	6,279.14	898.19	7,236.06	7,253.55	1.64	-0.66	1.51	
13,215.00	89.93	89.970	6,278.77	897.57	7,327.05	7,344.51	1.14	-0.67	-0.92	
13,306.00	90.50	89.690	6,278.43	897.84	7,418.05	7,435.50	0.70	0.63	-0.31	
13,397.00	89.97	89.220	6,278.06	898.71	7,509.04	7,526.49	0.78	-0.58	-0.52	
13,489.00	90.34	89.230	6,277.81	899.95	7,601.04	7,618.49	0.40	0.40	0.01	
13,580.00	90.40	89.350	6,277.22	901.08	7,692.03	7,709.48	0.15	0.07	0.13	
13,672.00	90.44	89.020	6,276.54	902.39	7,784.02	7,801.48	0.36	0.04	-0.36	
13,763.00	90.44	87.970	6,275.85	904.78	7,874.98	7,892.47	1.15	0.00	-1.15	
13,853.00	90.00	88.480	6,275.50	907.57	7,964.94	7,982.47	0.75	-0.49	0.57	
13,945.00	89.03	87.460	6,276.28	910.83	8,056.87	8,074.45	1.53	-1.05	-1.11	
14,036.00	89.26	88.850	6,277.64	913.76	8,147.81	8,165.43	1.55	0.25	1.53	
14,126.00	90.50	89.160	6,277.83	915.32	8,237.80	8,255.43	1.42	1.38	0.34	
14,217.00	90.47	88.750	6,277.06	916.98	8,328.78	8,346.43	0.45	-0.03	-0.45	
14,308.00	91.68	91.100	6,275.35	917.10	8,419.75	8,437.38	2.90	1.33	2.58	
14,398.00	89.73	89.970	6,274.24	916.26	8,509.74	8,527.33	2.50	-2.17	-1.26	
14,490.00	89.06	90.030	6,275.21	916.26	8,601.73	8,619.30	0.73	-0.73	0.07	
14,581.00	89.80	88.820	6,276.12	917.17	8,692.72	8,710.29	1.56	0.81	-1.33	
14,672.00	89.97	87.110	6,276.30	920.40	8,783.66	8,801.28	1.89	0.19	-1.88	
14,763.00	91.14	88.670	6,275.42	923.75	8,874.59	8,892.26	2.14	1.29	1.71	
14,854.00	91.88	88.900	6,273.02	925.68	8,965.54	8,983.23	0.85	0.81	0.25	
14,945.00	92.35	88.060	6,269.66	928.09	9,056.44	9,074.16	1.06	0.52	-0.92	
15,037.00	91.71	87.830	6,266.40	931.39	9,148.32	9,166.09	0.74	-0.70	-0.25	
15,128.00	90.67	87.700	6,264.51	934.94	9,239.23	9,257.06	1.15	-1.14	-0.14	
15,219.00	90.77	86.060	6,263.37	939.89	9,330.09	9,348.00	1.81	0.11	-1.80	
15,310.00	89.87	88.210	6,262.86	944.44	9,420.97	9,438.95	2.56	-0.99	2.36	
15,401.00	89.77	89.290	6,263.15	946.42	9,511.94	9,529.95	1.19	-0.11	1.19	
15,492.00	89.50	89.610	6,263.73	947.30	9,602.94	9,620.94	0.46	-0.30	0.35	
15,584.00	89.23	89.180	6,264.75	948.27	9,694.93	9,712.93	0.55	-0.29	-0.47	
15,675.00	88.96	87.880	6,266.18	950.60	9,785.88	9,803.92	1.46	-0.30	-1.43	
15,766.00	91.68	87.280	6,265.68	954.44	9,876.79	9,894.89	3.06	2.99	-0.66	
15,858.00	90.64	89.580	6,263.81	956.96	9,968.73	9,986.86	2.74	-1.13	2.50	
15,949.00	90.70	88.470	6,262.75	958.51	10,059.71	10,077.85	1.22	0.07	-1.22	
16,042.00	90.13	89.580	6,262.08	960.09	10,152.69	10,170.85	1.34	-0.61	1.19	

<b>Company:</b>	HighPoint Resources	<b>Local Co-ordinate Reference:</b>	Well Anschutz State 5-62-26-3340C
<b>Project:</b>	Weld County, CO NAD 83	<b>TVD Reference:</b>	GL 4656.1' & KB 16.5' @ 4672.60ft (Cade 24)
<b>Site:</b>	Anschutz State 5-62-26_25 SE27 PAD [GOOD]	<b>MD Reference:</b>	GL 4656.1' & KB 16.5' @ 4672.60ft (Cade 24)
<b>Well:</b>	Anschutz State 5-62-26-3340C	<b>North Reference:</b>	True
<b>Wellbore:</b>	OH	<b>Survey Calculation Method:</b>	Minimum Curvature
<b>Design:</b>	OH	<b>Database:</b>	Casper District

Survey									
Measured Depth (ft)	Inclination (°)	Azimuth (°)	Vertical Depth (ft)	+N/-S (ft)	+E/-W (ft)	Vertical Section (ft)	Dogleg Rate (°/100ft)	Build Rate (°/100ft)	Turn Rate (°/100ft)
16,136.00	90.10	88.610	6,261.89	961.58	10,246.68	10,264.84	1.03	-0.03	-1.03
16,229.00	89.87	89.020	6,261.91	963.50	10,339.66	10,357.84	0.51	-0.25	0.44
16,323.00	89.97	88.020	6,262.04	965.93	10,433.63	10,451.84	1.07	0.11	-1.06
16,417.00	90.34	87.750	6,261.79	969.40	10,527.56	10,545.83	0.49	0.39	-0.29
16,511.00	90.44	86.090	6,261.15	974.45	10,621.42	10,639.77	1.77	0.11	-1.77
16,559.00	89.93	86.440	6,260.99	977.58	10,669.32	10,687.73	1.29	-1.06	0.73
<b>Last SDI MWD Survey</b>									
16,621.00	89.93	86.440	6,261.07	981.43	10,731.20	10,749.67	0.00	0.00	0.00
<b>Projection to TD</b>									

Design Annotations				
Measured Depth (ft)	Vertical Depth (ft)	Local Coordinates		Comment
		+N/-S (ft)	+E/-W (ft)	
116.50	116.50	0.51	0.00	First MS Gyro Survey
747.50	747.48	4.97	0.07	Last MS Gyro Survey
881.00	880.97	4.03	0.66	First SDI MWD Survey
5,815.00	5,694.29	767.05	263.30	First SDI MWD Curve Survey
5,835.00	5,714.26	767.41	264.28	Curve KOP
6,696.00	6,282.06	754.42	811.87	Last SDI MWD Curve Survey
6,819.00	6,286.46	756.29	934.76	First SDI MWD Lateral Survey
16,559.00	6,260.99	977.58	10,669.32	Last SDI MWD Survey
16,621.00	6,261.07	981.43	10,731.20	Projection to TD

Checked By: _____	Approved By: _____	Date: _____
-------------------	--------------------	-------------





## Survey Certification

7327 West Barton Road  
Casper, WY 82604  
(307)-472-6621 Fax (307) 472-5439

Operator	HighPoint Resources
Well Name & No.	Anschutz State 5-62-26-3340C
API #	05-123-46084
County & State	Weld County, CO
SDI Job #	OP.009390
Rig	Cade 24
Survey Date	14-Apr-2018

I, Seth M. Burstad, having personal knowledge of all the facts, hereby certify that the attached directional survey run from a measured depth of 747.5 feet to a measured depth of 16559 feet is true and correct as determined from all available records.

*Seth M. Burstad*

Signature

16-Apr-2018

Date

### Seth M. Burstad

Rockies Region Well Planner  
Scientific Drilling - Rocky Mountain District