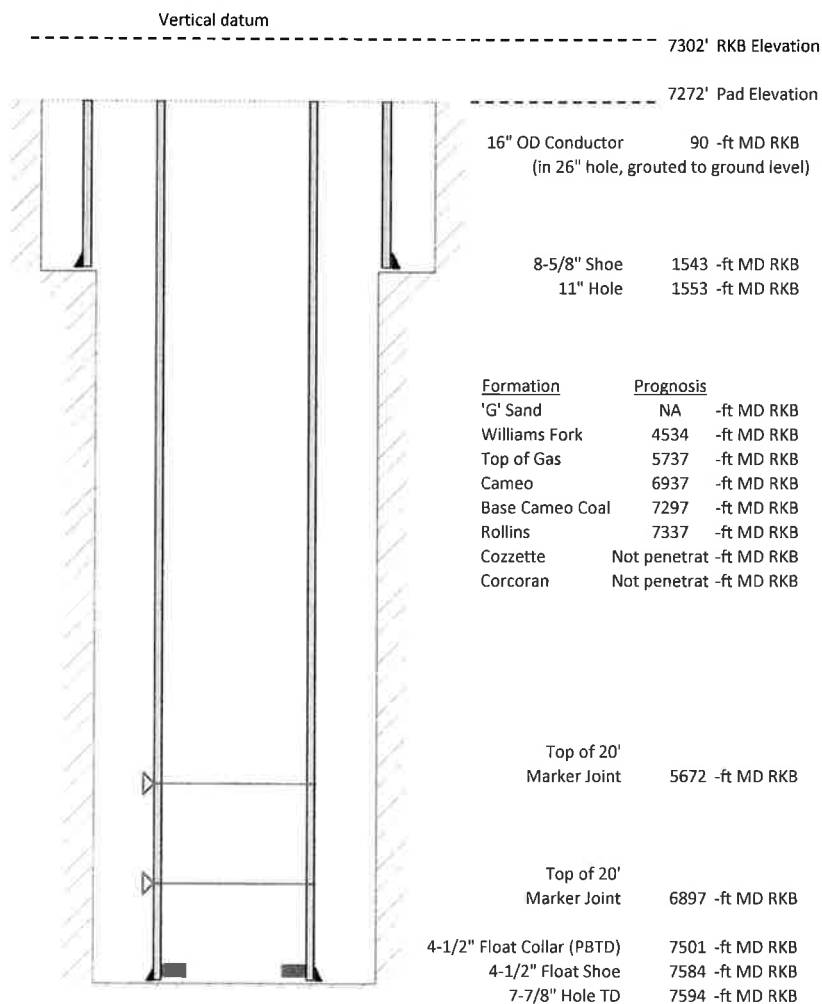


Laramie Energy, LLC
Gunderson 0994-13-17W
Slot B-1
H&P 522 (30-ft KB)

API #: 05-077-10547-00
 NE/4 SW/4 S13/T9S/R94W/6th PM
 Mesa County, CO
 Date of diagram: 5/8/2018



Cementing details

8-5/8" 24# Surface Csg	Lead	Tail
Density (ppg)	12.3	12.8
Volume (sx)	158	95
Yield (cf/sx)	2.45	2.18
Top (ft RKB)	0	735
Bottom (ft RKB)	735	1543
Returns (full or partial)	Full	Full

4-1/2" 11.6# Prod Csg	Lead	Tail
Density (ppg)	12.5	13.3
Volume (sx)	692	354
Yield (cf/sx)	1.94	1.73
Est Top (ft RKB)	1030	5744
Est Bottom (ft RKB)	5744	7584
Returns (full or partial)	Full	Full

Displacement
8.3 ppg
116.3 bbls

Other Remarks: 15 bbls cement back on surface. 20 bbls spacer to surface on production job.