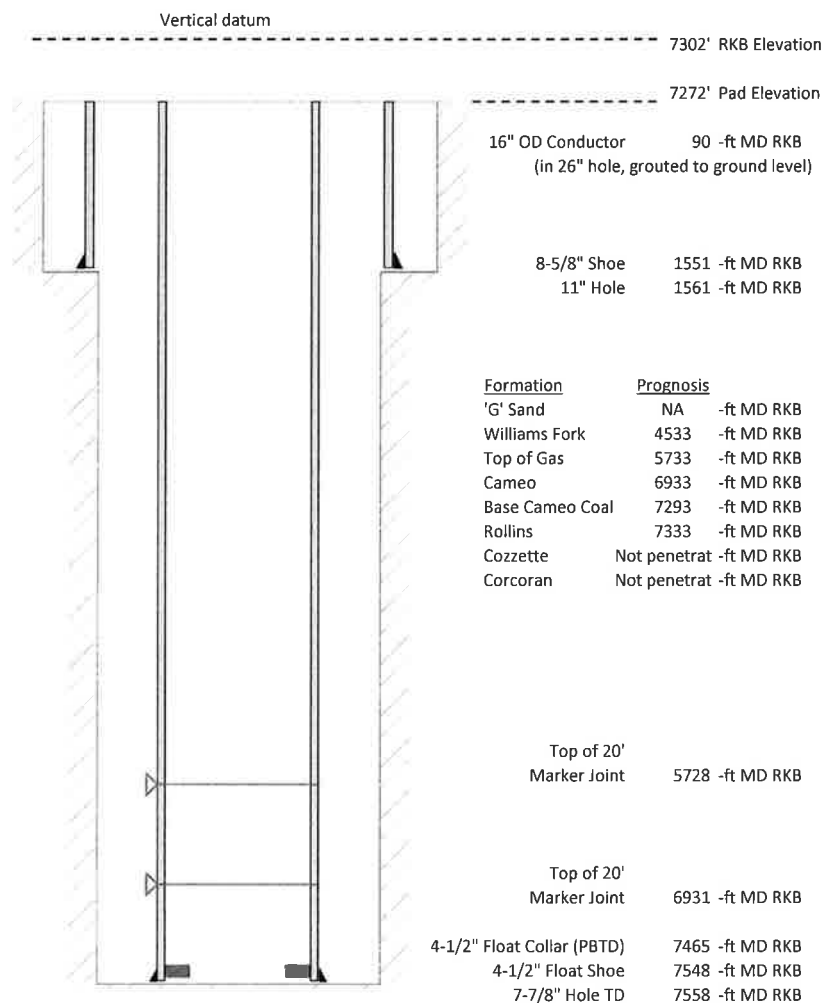


Laramie Energy, LLC
Gunderson 0994-13-15W
Slot B-2
H&P 522 (30-ft KB)

API # : 05-077-10542-00
 NE/4 SW/4 S13/T9S/R94W/6th PM
 Mesa County, CO
 Date of diagram : 5/5/2018



Cementing details

8-5/8" 24# Surface Csg	Lead	Tail
Density (ppg)	12.3	12.8
Volume (sx)	158	98
Yield (cf/sx)	2.45	2.18
Top (ft RKB)	0	775
Bottom (ft RKB)	775	1551
Returns (full or partial)	Full	Full

4-1/2" 11.6# Prod Csg	Lead	Tail
Density (ppg)	12.5	13.3
Volume (sx)	745	395
Yield (cf/sx)	1.94	1.73
Est Top (ft RKB)	0	4500
Est Bottom (ft RKB)	4500	7548
Returns (full or partial)	Full	Full

Displacement
8.3 ppg
115.7 bbls

Other Remarks : 12 bbls cement back on surface. 30 bbls cement back on production.