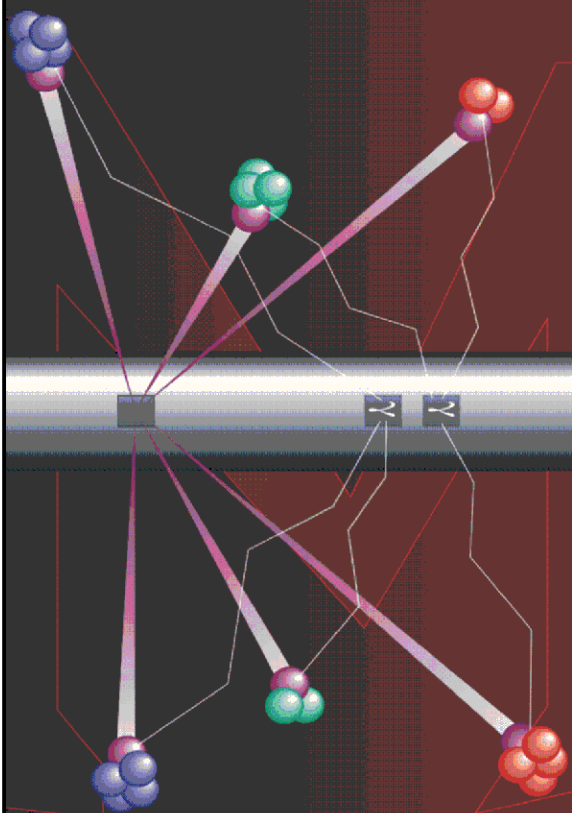


**BAKER
HUGHES**
a GE company



Pulsed Neutron Formation Evaluation



NEO Neutron Emulated Openhole

COMPANY LARAMIE ENERGY LLC

WELL GUNDERSON 0994-13-16E

FIELD VEGA

COUNTY MESA STATE COLORADO

LOCATION:

SEE REMARKS SECTION

SEC 13 TWP 9S RGE 94W

ELEVATIONS:

KB 7302.0 FT DF GL 7272.0 FT

DATE 18-JUN-2018 ECC CALGARY GEOSCIENCE

IN MAKING INTERPRETATIONS OF LOGS OUR EMPLOYEES WILL GIVE THE CUSTOMER THE BENEFIT OF THEIR BEST JUDGEMENT. BUT SINCE ALL INTERPRETATIONS ARE OPINIONS BASED ON INFERENCES FROM ELECTRICAL OR OTHER MEASUREMENTS, WE CANNOT, AND WE DO NOT GUARANTEE THE ACCURACY OR CORRECTNESS OF ANY INTERPRETATION. WE SHALL NOT BE LIABLE OR RESPONSIBLE FOR ANY LOSS, COST, DAMAGES, OR EXPENSES WHATSOEVER INCURRED OR SUSTAINED BY THE CUSTOMER RESULTING FROM ANY INTERPRETATION MADE BY ANY OF OUR EMPLOYEES.

COMPUTATION PARAMETERS

COMPUTATION	LOGS USED: <u>RPM-C</u>		PROGRAM: <u>NEO</u>	
	CENTER: <u>CALGARY GEOSCIENCE</u>	LOG ANALYST: <u>A. KOTOV</u>		DATE: <u>25-JUN-2018</u>
FIELD DATA	LOCATION: <u>GRAND JCT.</u>		ENGINEER: <u>M.BAUKA/US136899</u>	DATE: <u>18-JUN-2018</u>
FROM	TO			
<u>2474 FT</u>	<u>8747 FT</u>			

REMARKS

LOCATION:
SHL: LAT:39.273824, LONG:-107.834937
BHL: LAT:39.273581, LONG:-107.825827

TRAINING WELL:
GUNDERSON 0994-13-06W

ANY ERRORS IN THE TRAINING WELL OPEN HOLE DATA CAN PERPETUATE THROUGH AS AN ERROR IN THE EMULATED RESULTS.

BONG LOG IS DEPTH REFERENCE LOG

NEO RESULTS FOR GUNDERSON 0994-13-16E (G-SAND)

ECLIPS ECPLLOT from ECLIPS 7.0 WFM 6.0.7905.1 Wed 08/23/2017 09:02:35.01

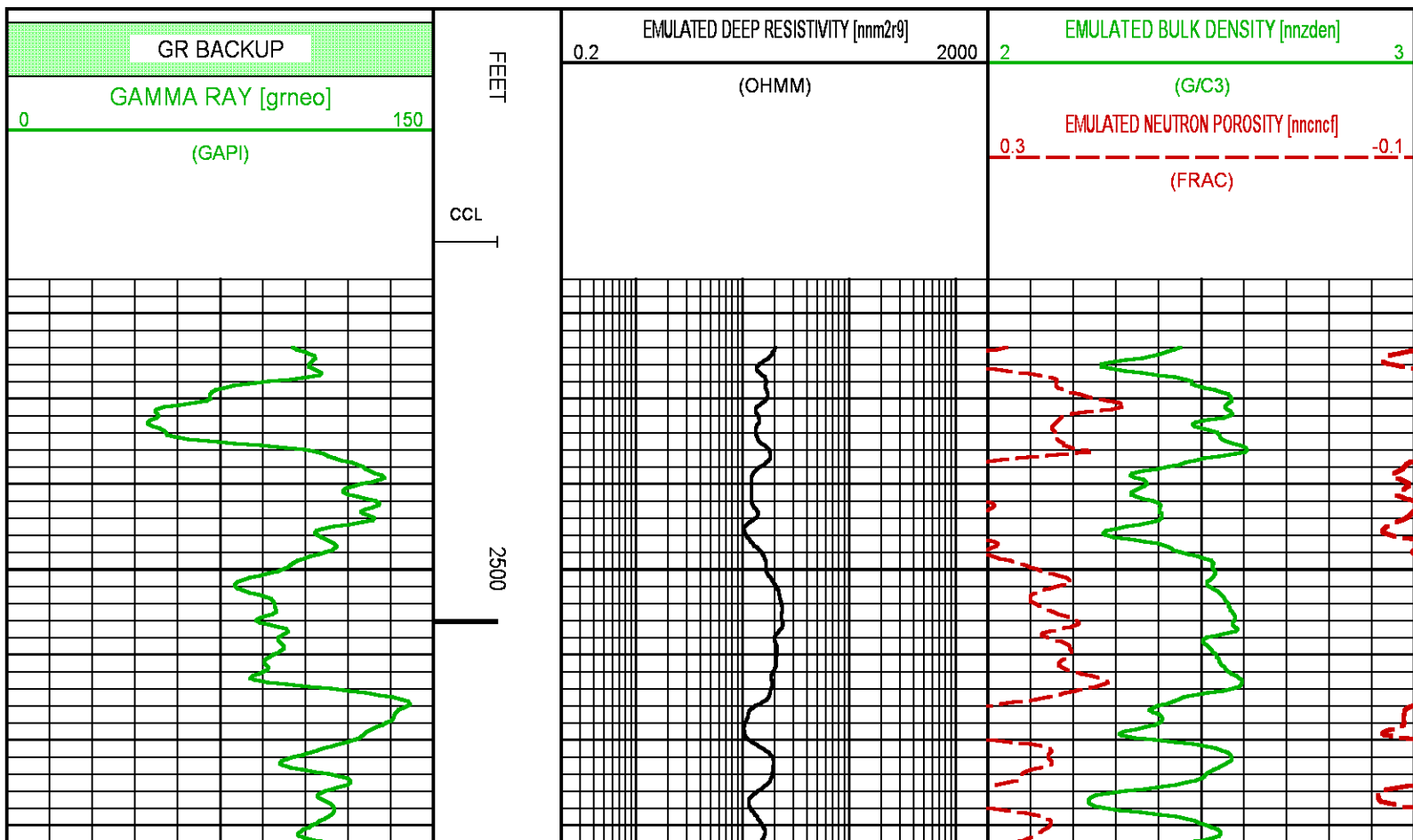
Plotted: Mon Jun 25 13:18:12 2018

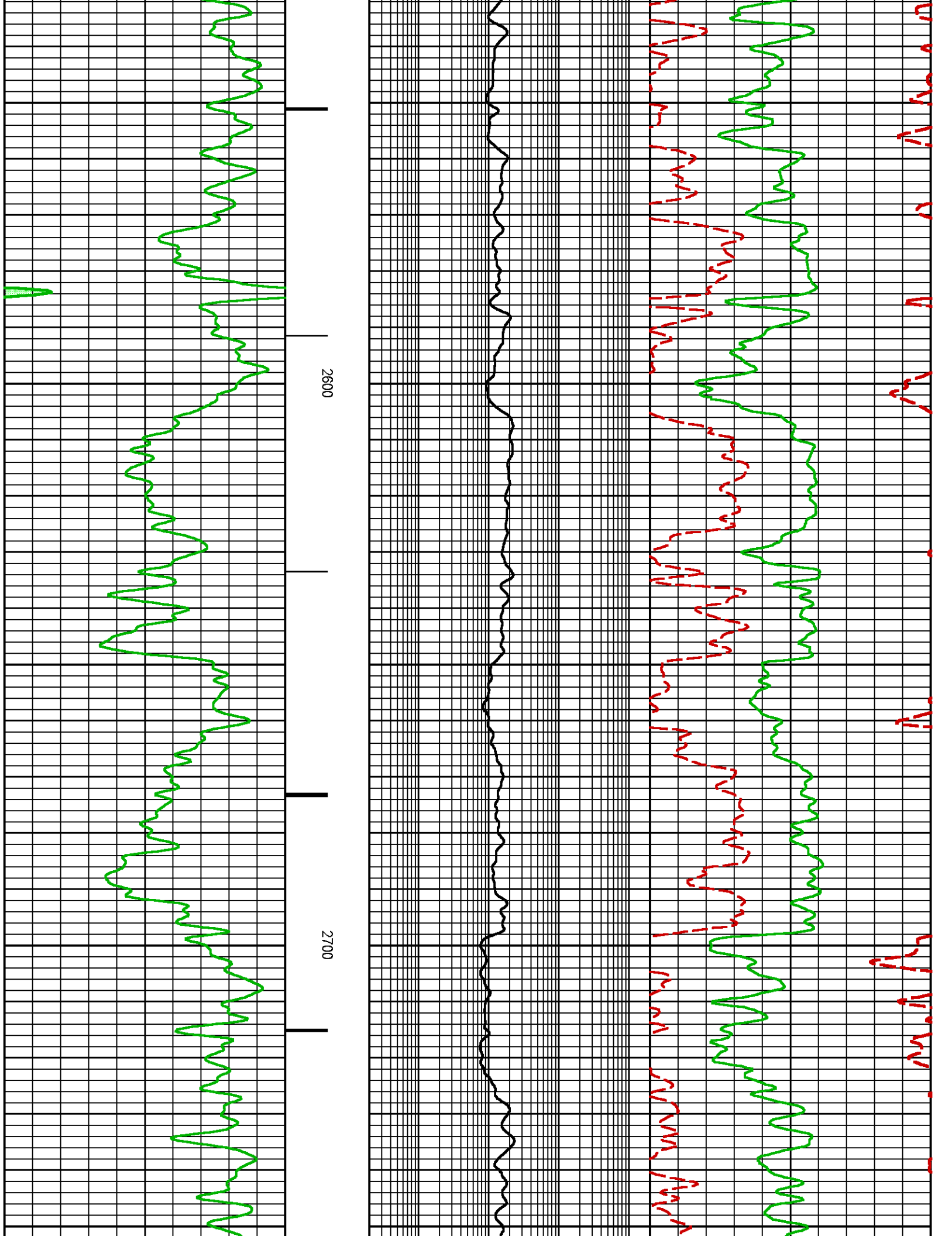
CURVE MEASURE POINT OFFSET

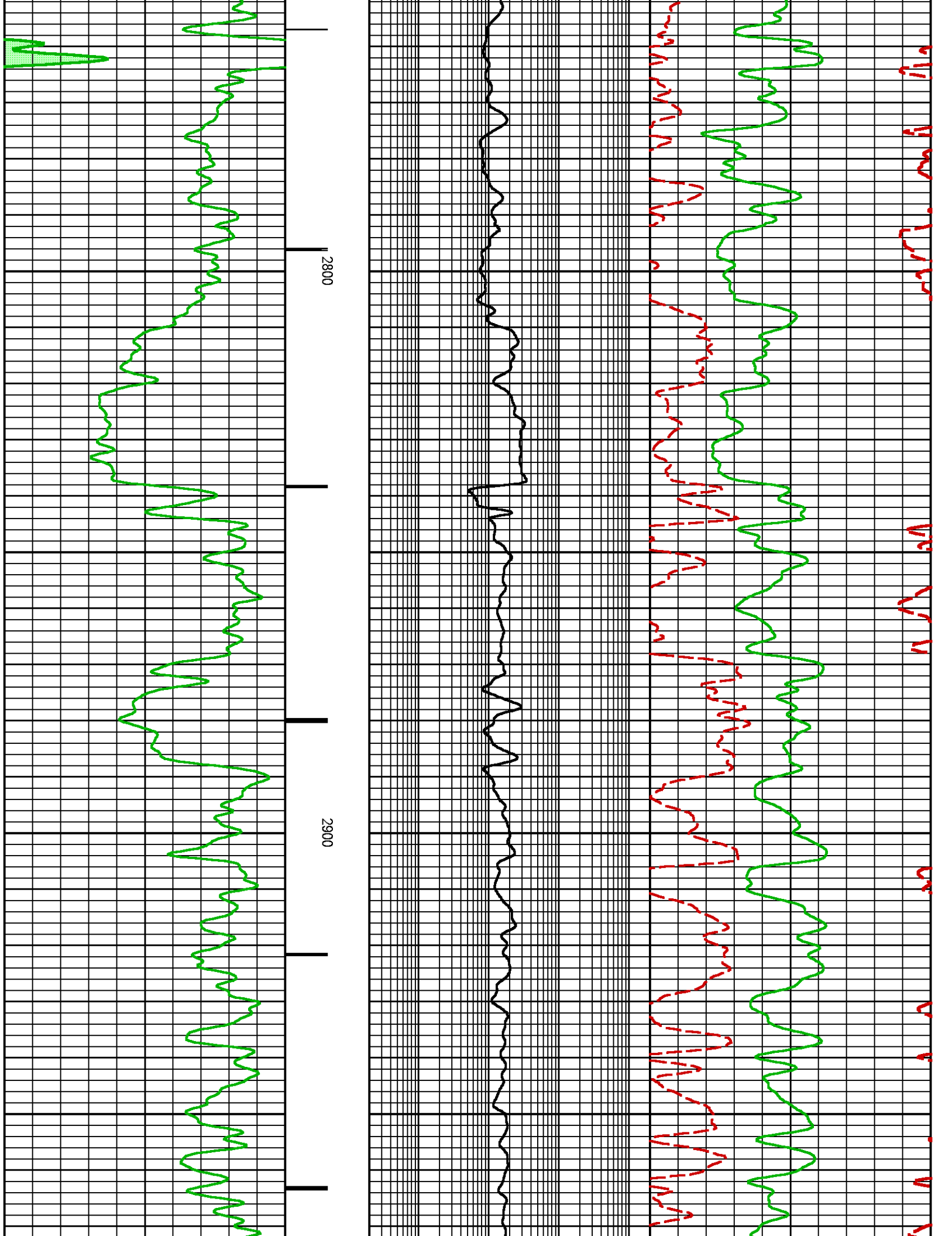
CURVE	OFFSET (ft)	CURVE	OFFSET (ft)	CURVE	OFFSET (ft)	CURVE	OFFSET (ft)
CCL	0.00	NNCNCf	0.00	NNZDEN	0.00		
GRNEO	0.00	NNM2R9	0.00				

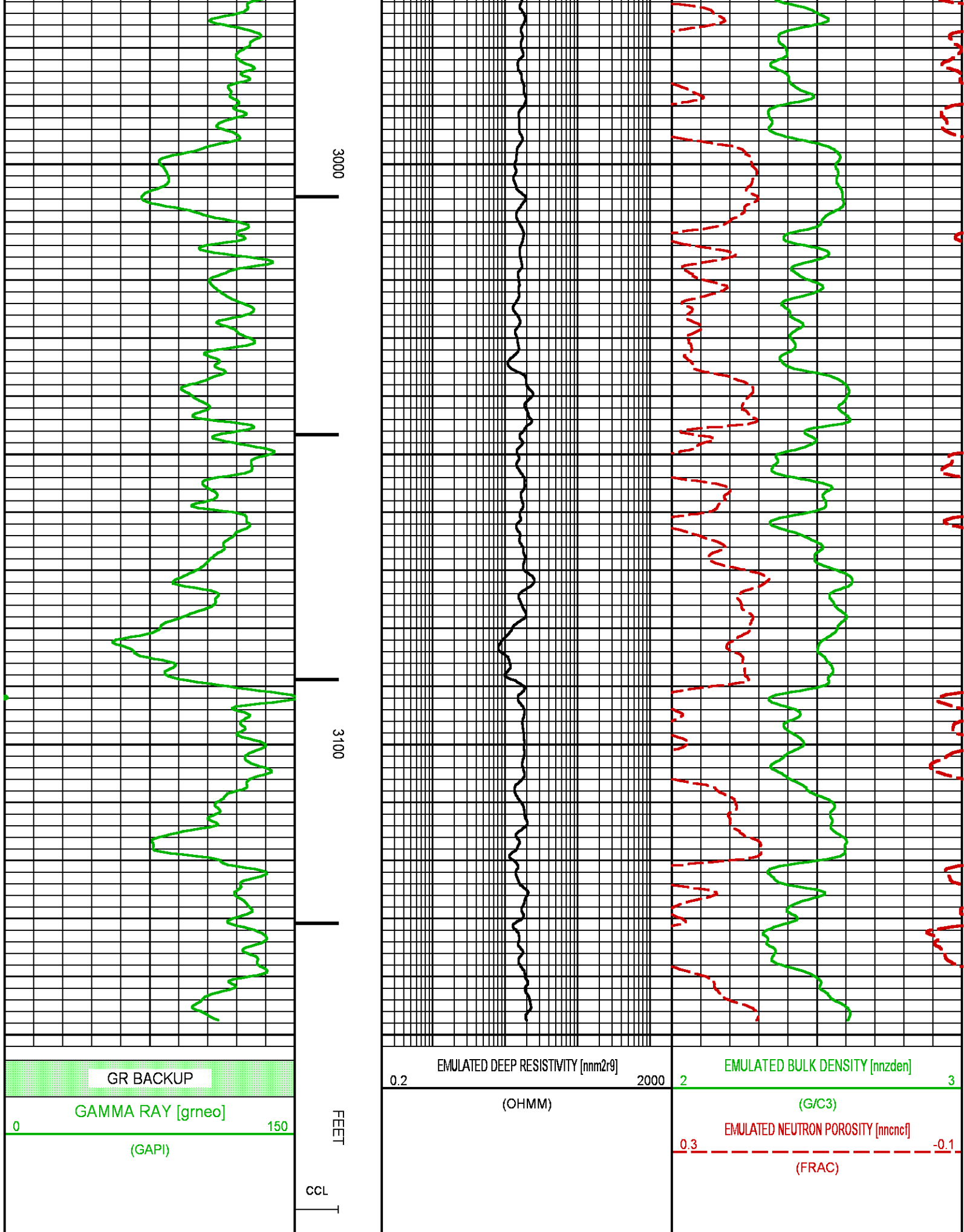
Project : NA
User : kotoale
Presentation : BHI1F65XZ1:d:\Ape_Projects\Laramie_0994_13_16E_NEO\
 NEO_PRESENTATION_LARAMIE_G-Sand.pdf [5"/100' Scale]
Plot Interval : 2467 - 3152 Feet

Data File 1 : F1 : BHI1F65XZ1:D:\Ape_Projects\Laramie_0994_13_16E_NEO\Merged_Set_Final.txt
Created On : N/A
Company : LARAMIE ENERGY LLC
Well : GUNDERSON 0994-13-16E
Field : VEGA
File Interval : 2474 - 8737 Feet
OCT : NA









GR BACKUP

GAMMA RAY [grneo]

(GAPI)

EMULATED DEEP RESISTIVITY [nm2r9]

(OHMM)

EMULATED BULK DENSITY [nnzden]

(G/C3)

EMULATED NEUTRON POROSITY [nnncnf]

(FRAC)

3000

3100

FEET

CCL

NEO RESULTS FOR GUNDERSON 0994-13-16E(MAIN)

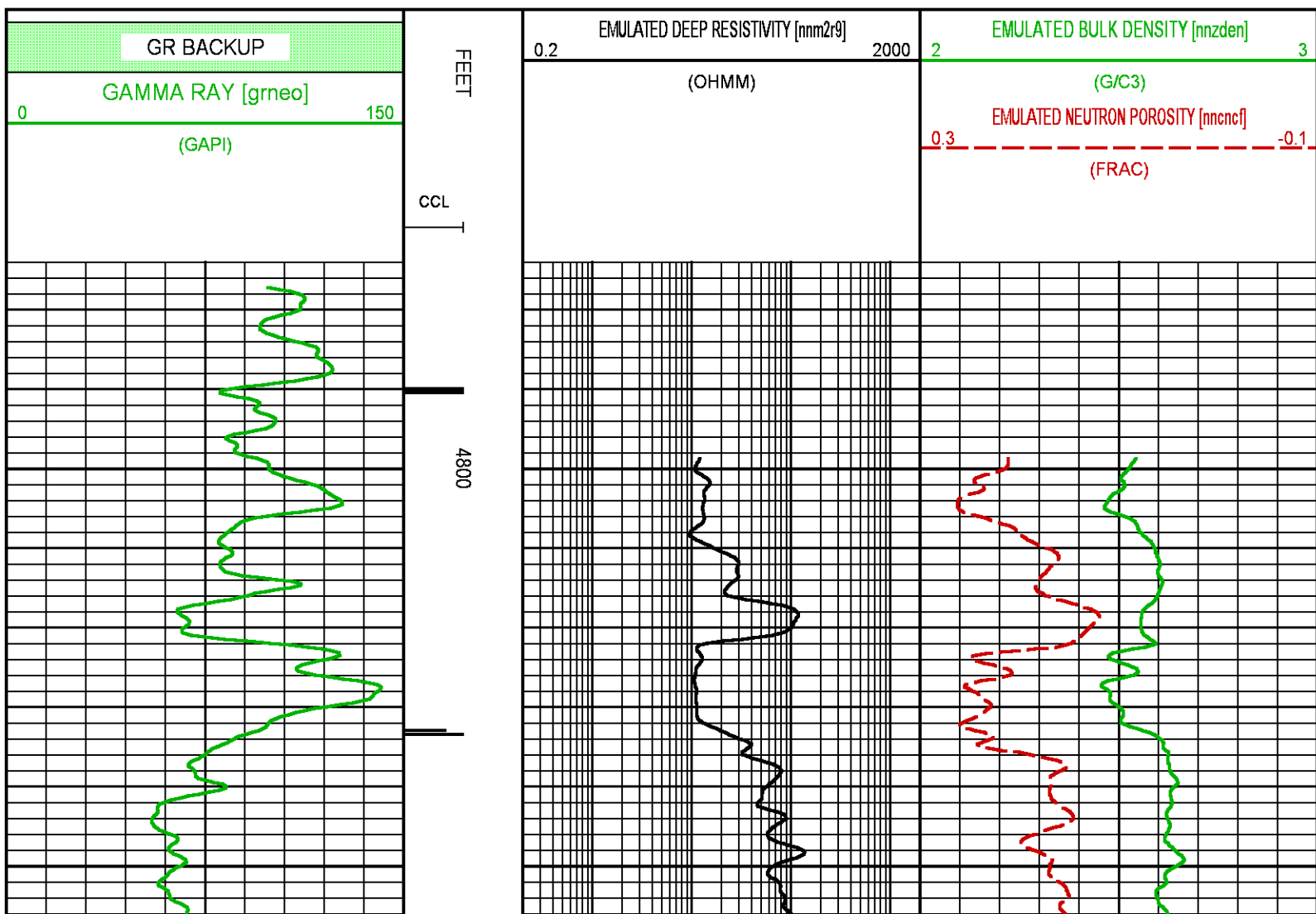
ECLIPS ECPLLOT from ECLIPS 7.0 WFM 6.0.7905.1 Wed 08/23/2017 09:02:35.01

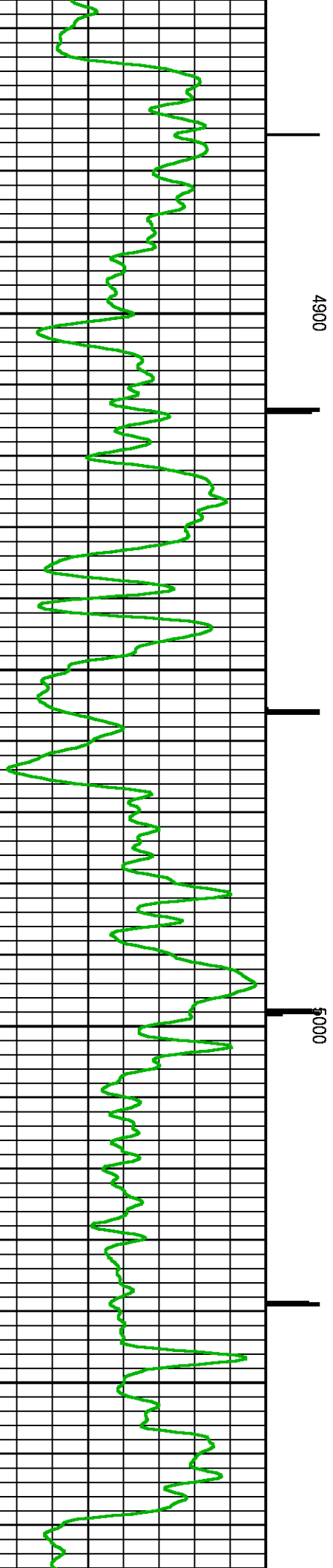
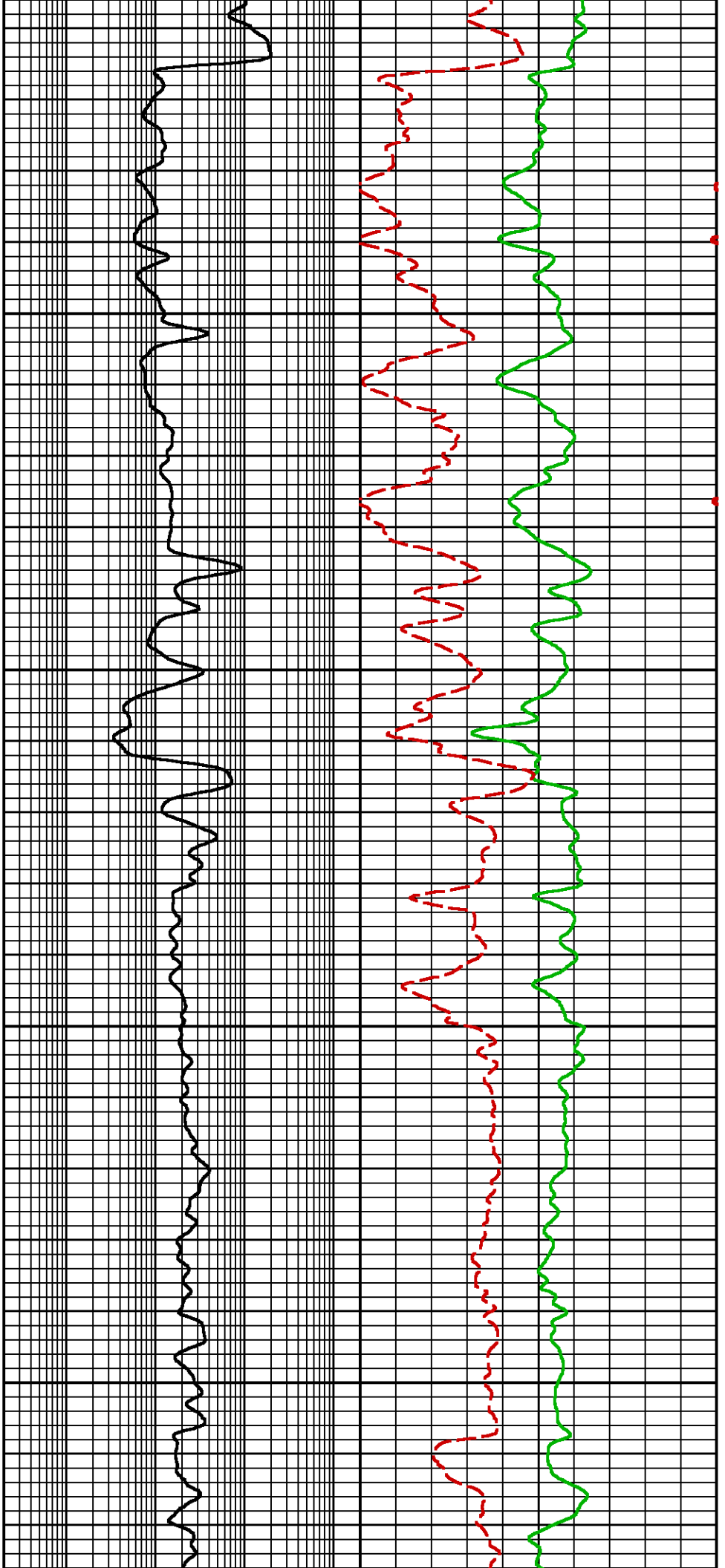
Plotted: Mon Jun 25 13:52:24 2018

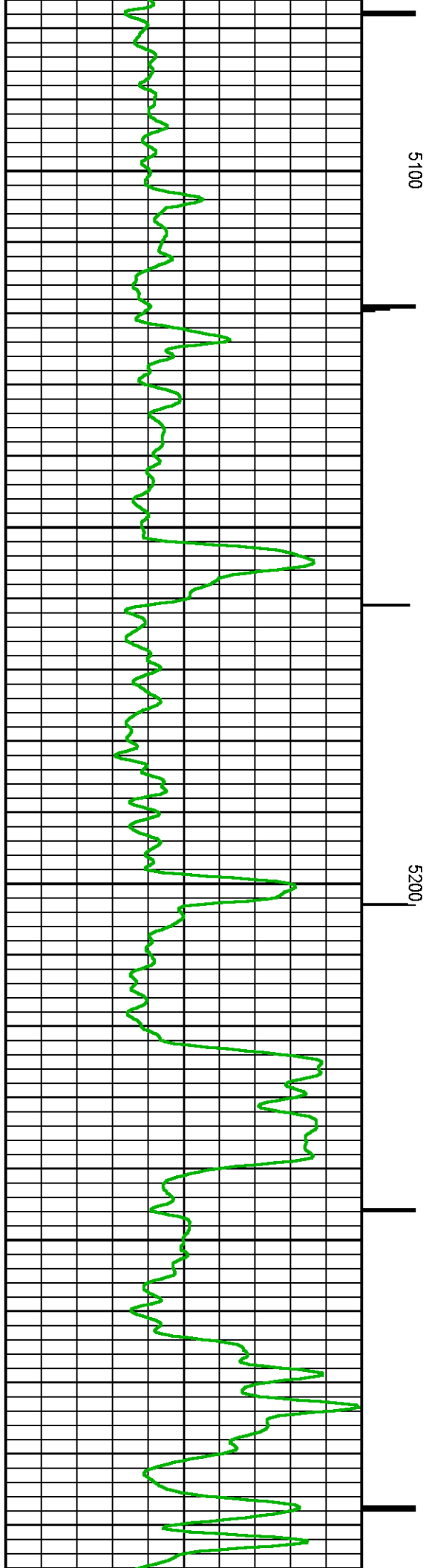
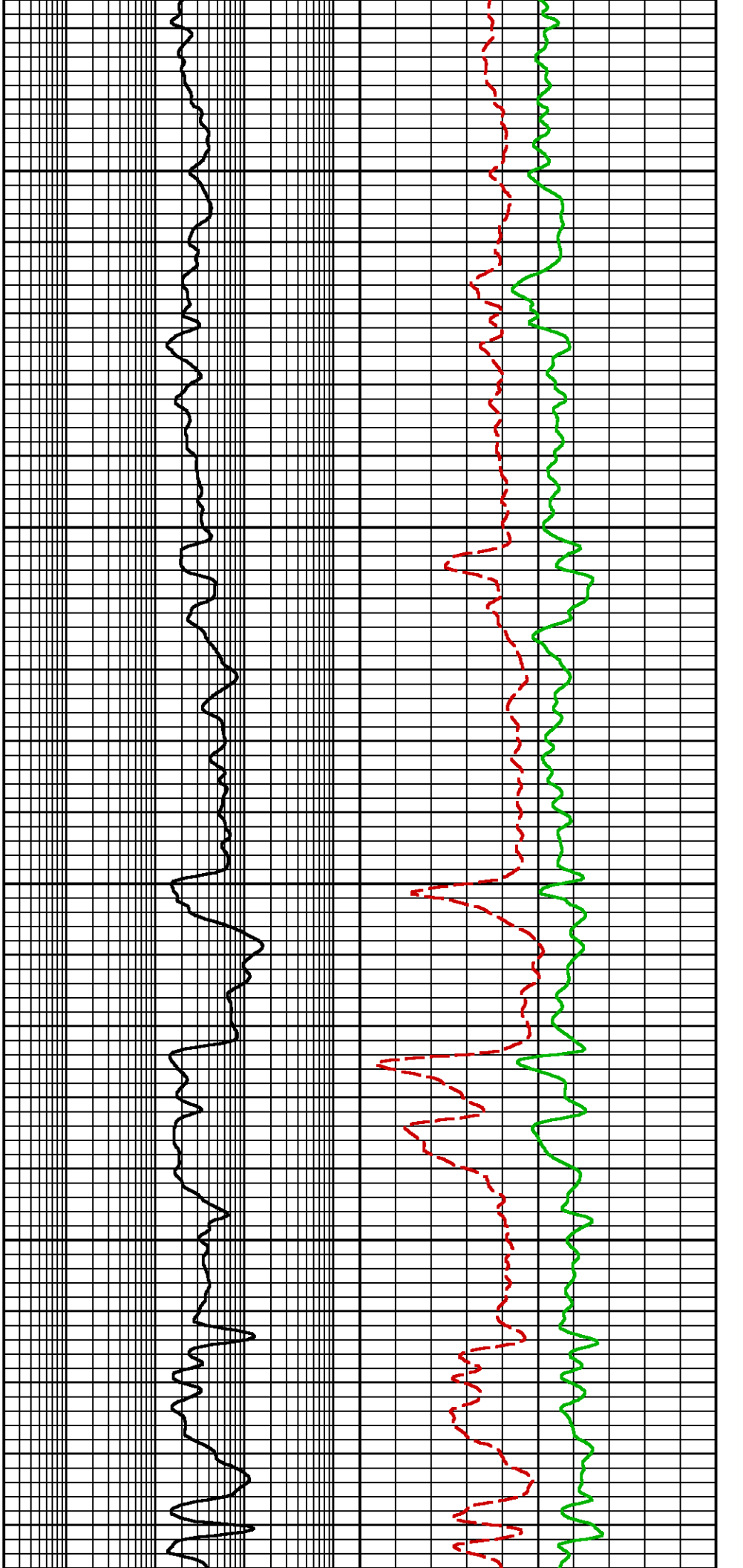
CURVE MEASURE POINT OFFSET

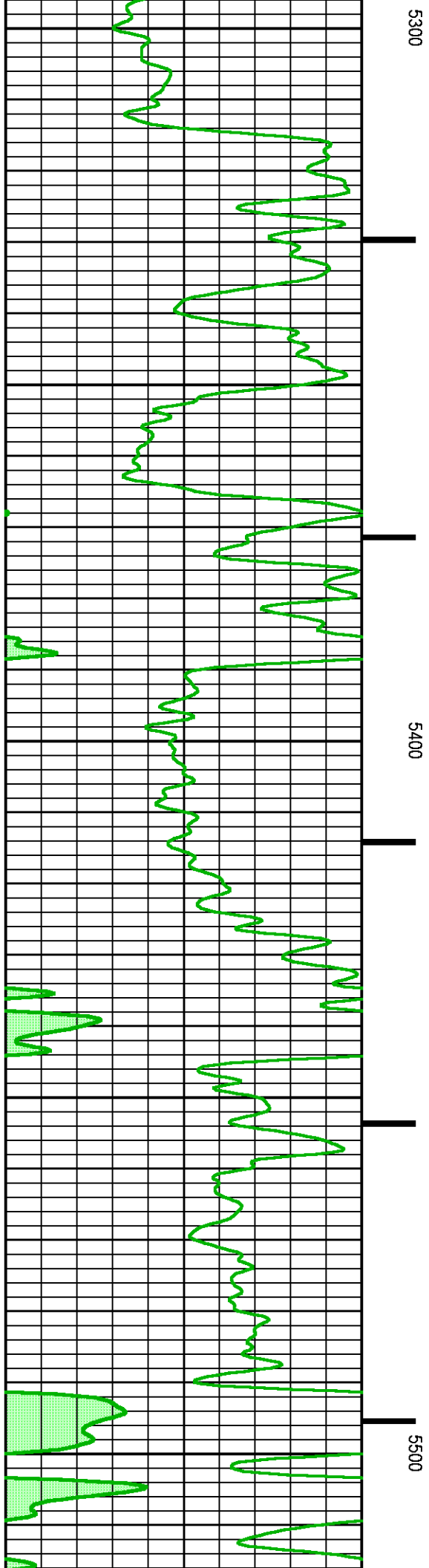
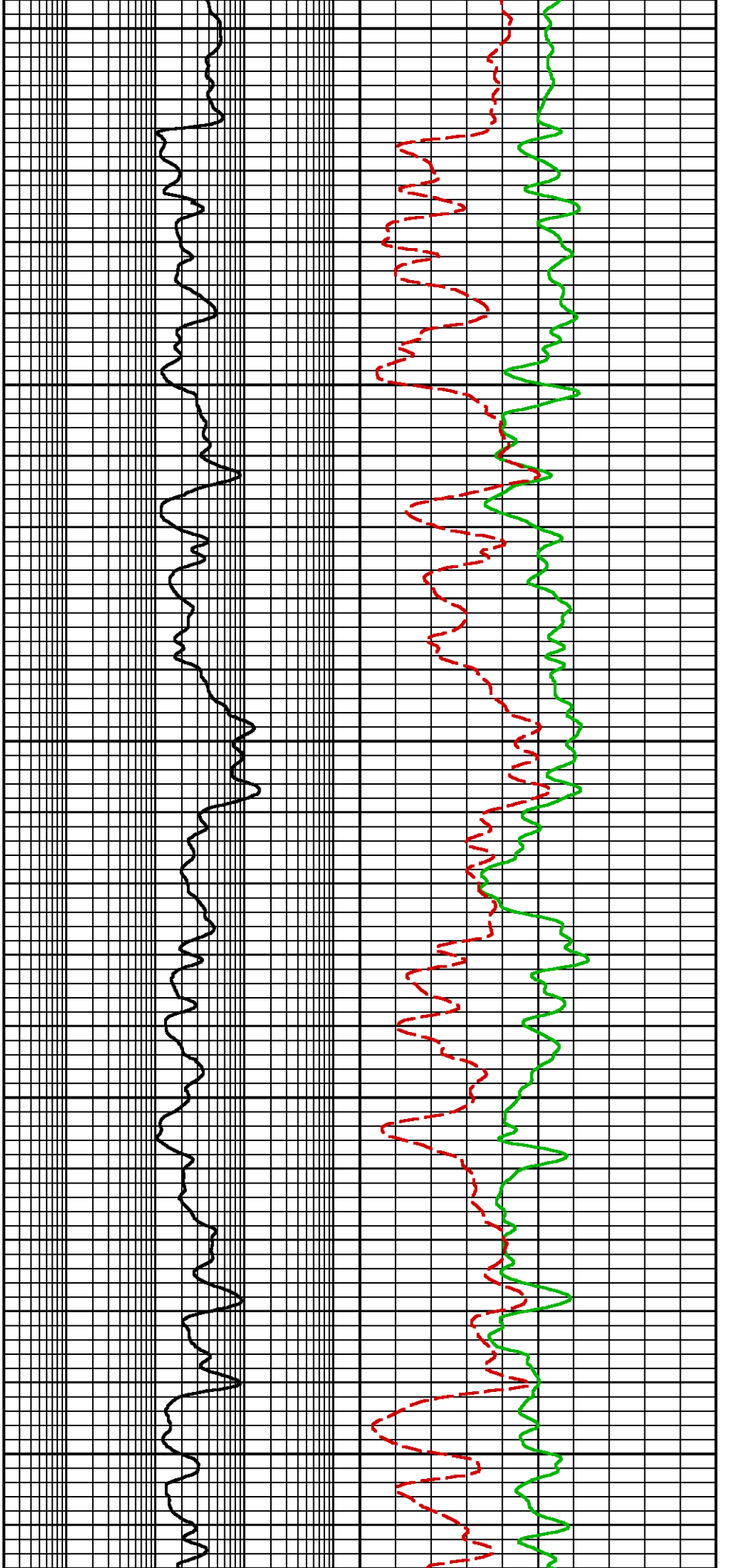
CURVE	OFFSET (ft)	CURVE	OFFSET (ft)	CURVE	OFFSET (ft)	CURVE	OFFSET (ft)
CCL	0.00	NNCNC	0.00	NNZDEN	0.00		
GRNEO	0.00	NNM2R9	0.00				

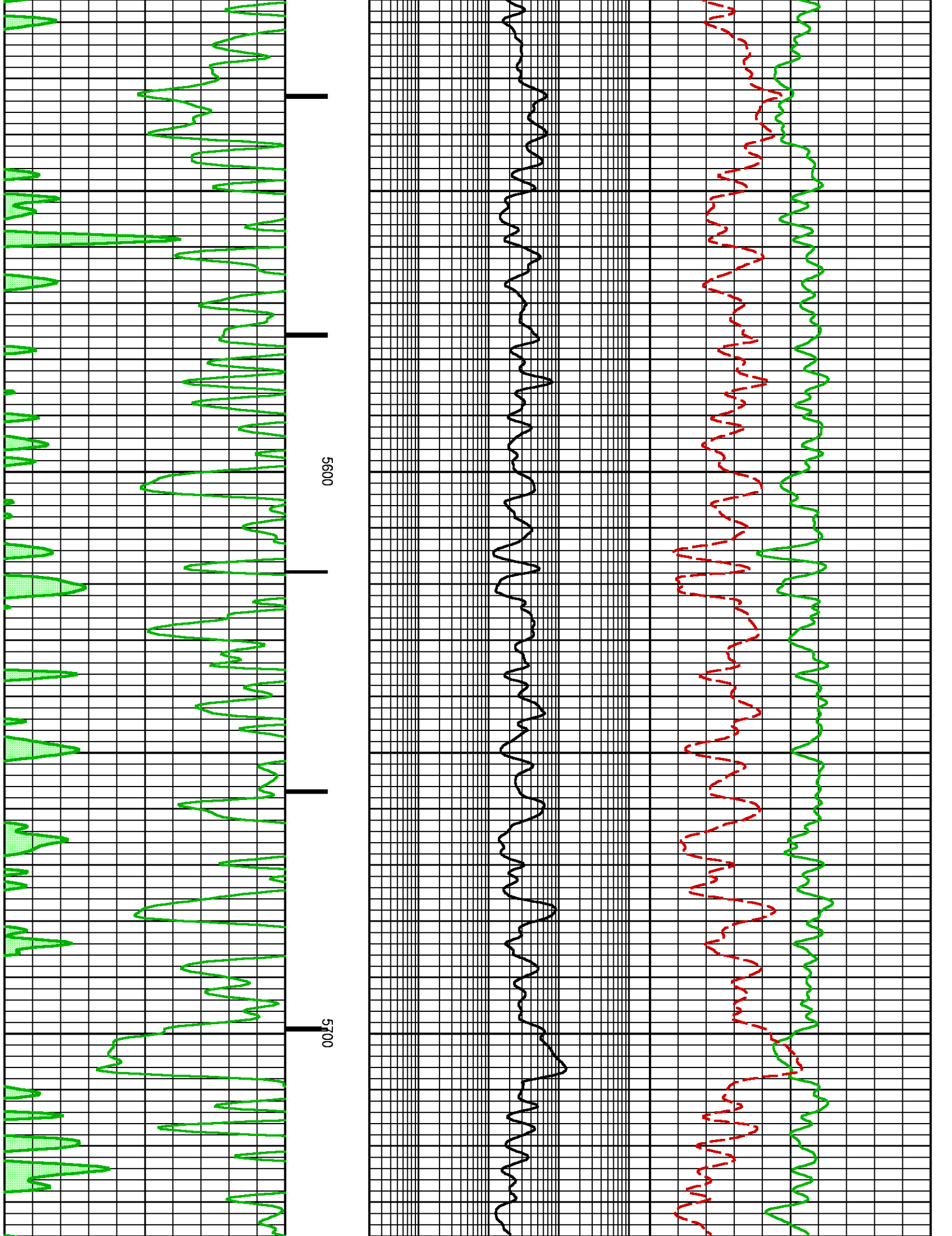
Project : NA
User : kotoale
Presentation : BHI1F65XZ1:d:\Ape_Projects\Laramie_0994_13_16E_NEO\NEO_PRESENTATION_LARAMIE_MAIN.pdf [5"/100" Scale]
Plot Interval : 4774 - 8737 Feet
Data File 1 : F1 : BHI1F65XZ1:D:\Ape_Projects\Laramie_0994_13_16E_NEO\Merged_Set_Final.txt
Created On : N/A
Company : LARAMIE ENERGY LLC
Well : GUNDERSON 0994-13-16E
Field : VEGA
File Interval : 2474 - 8737 Feet
OCT : NA

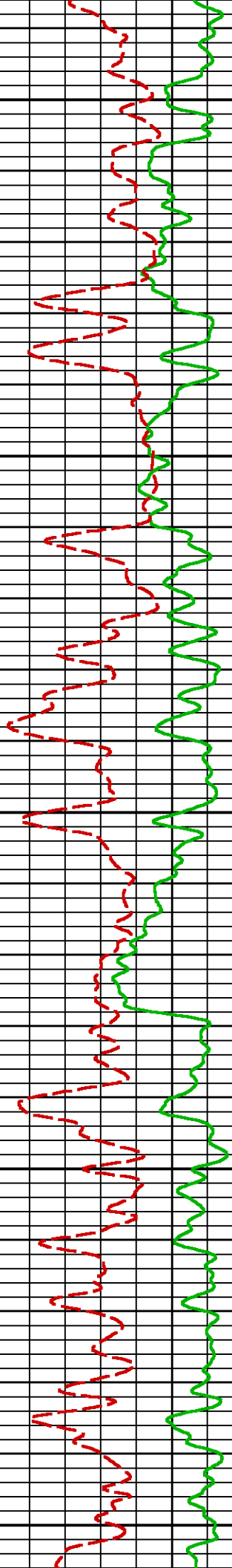
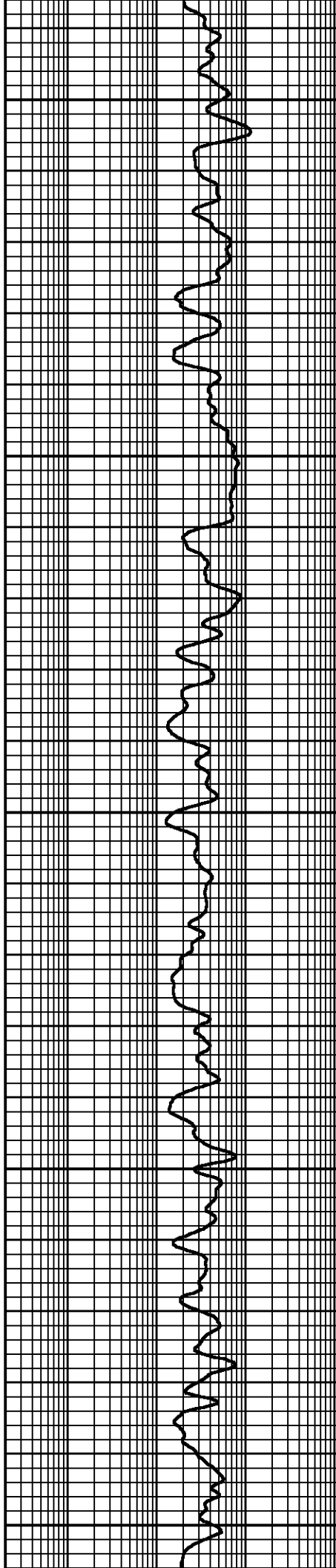
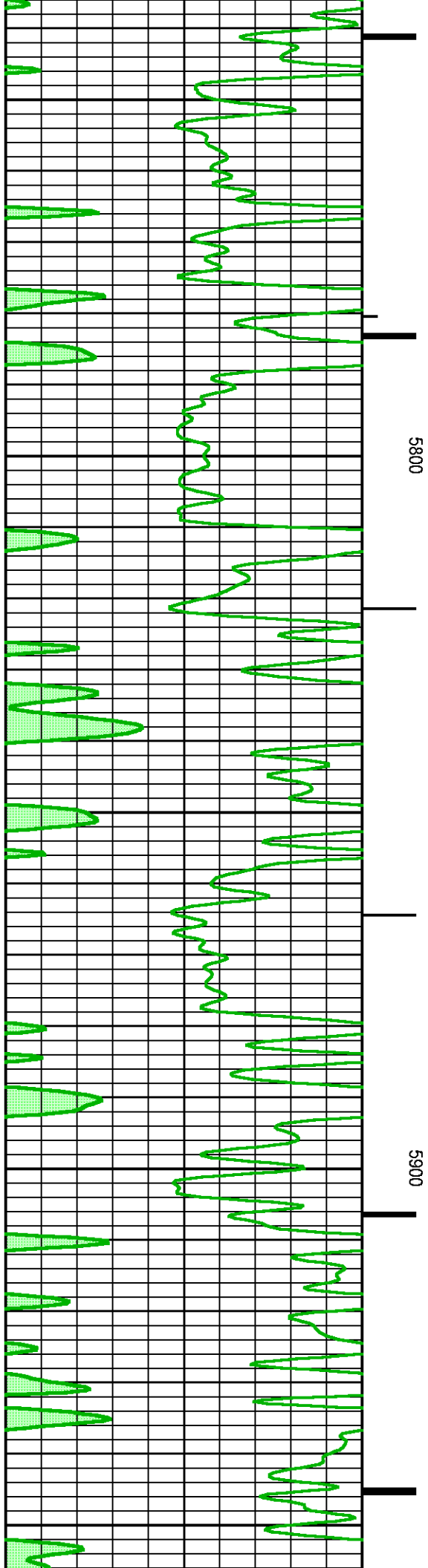


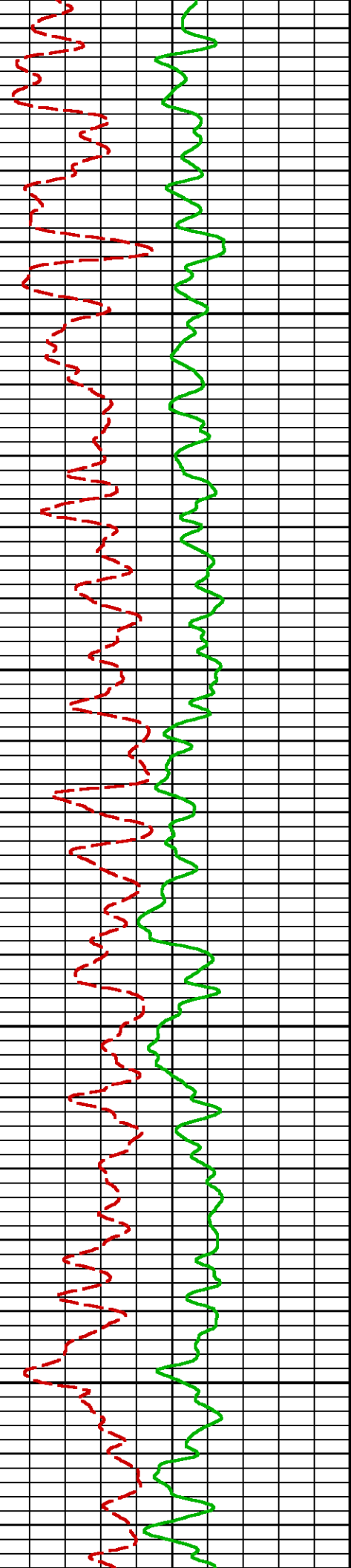
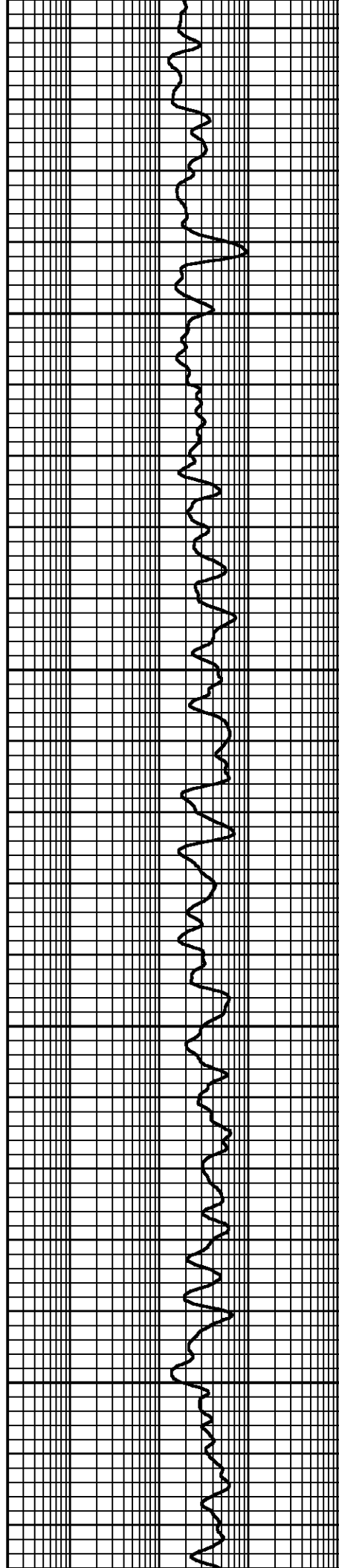
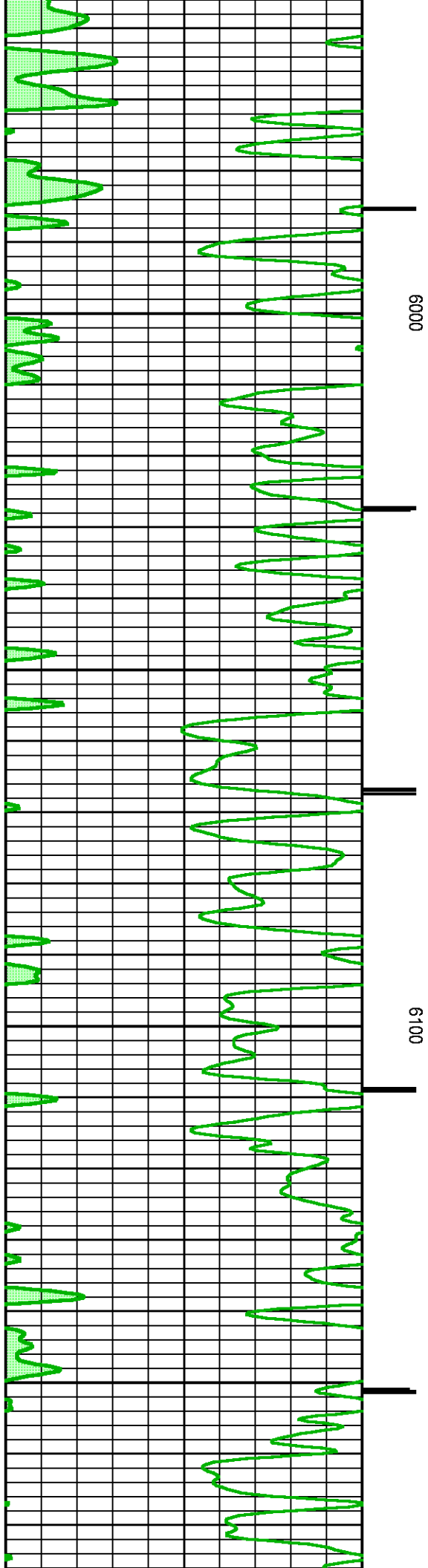


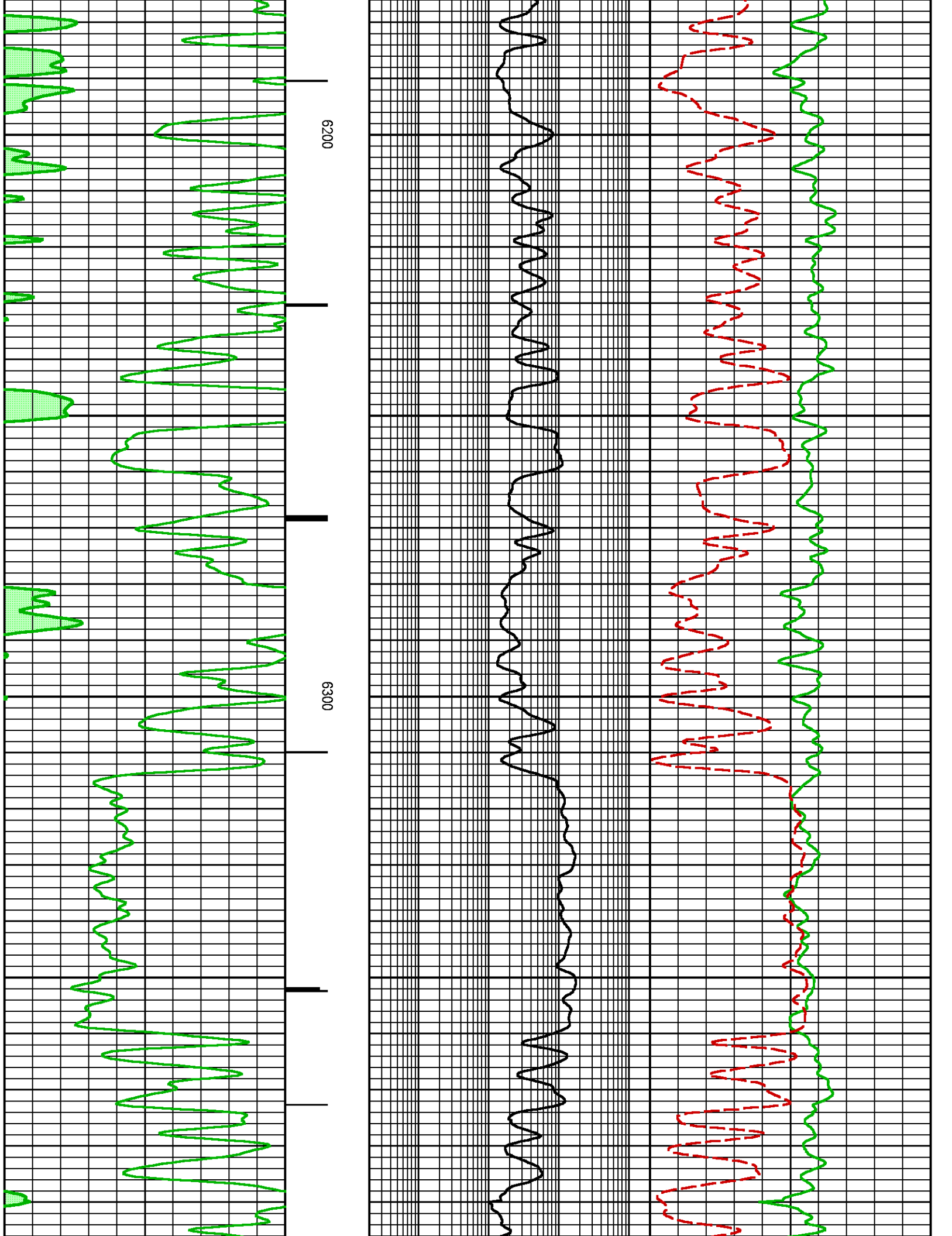


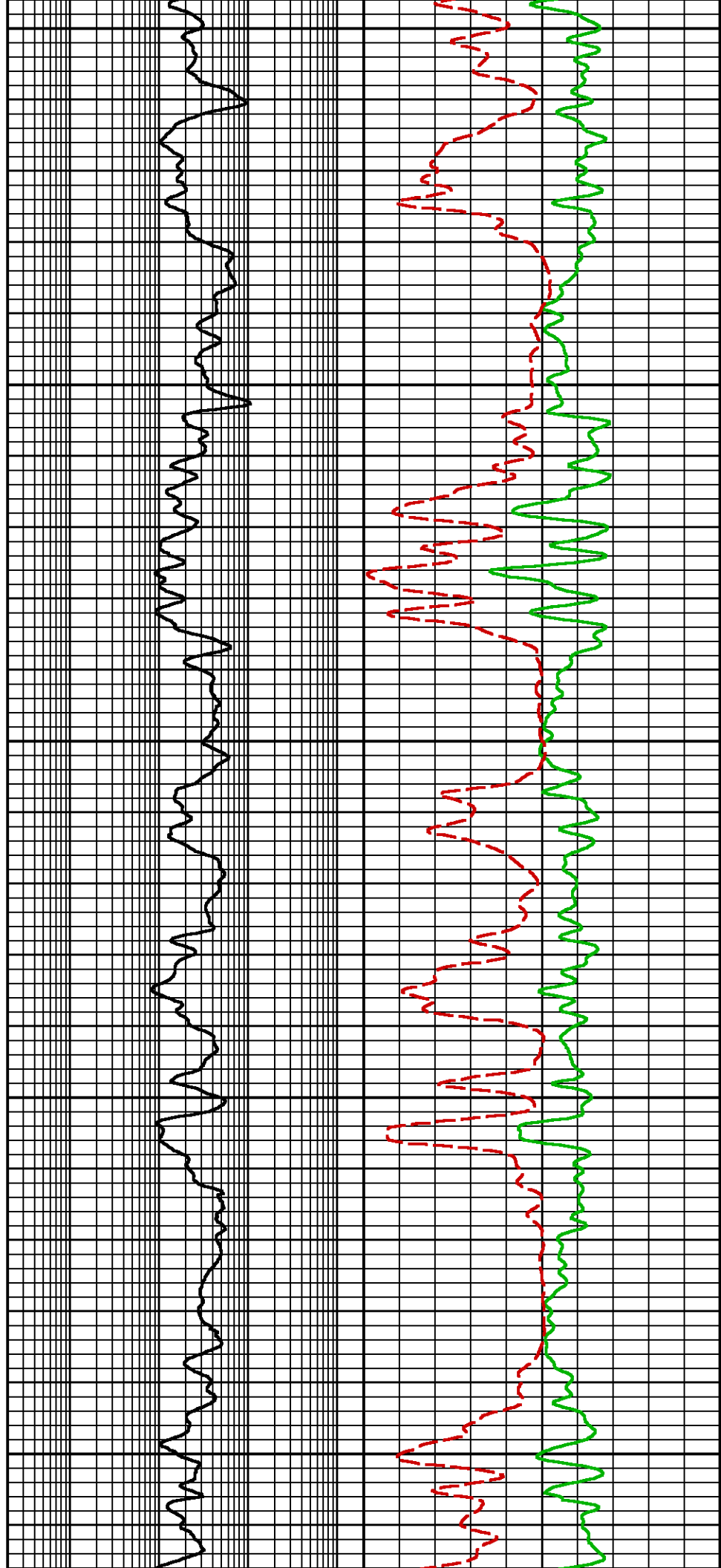
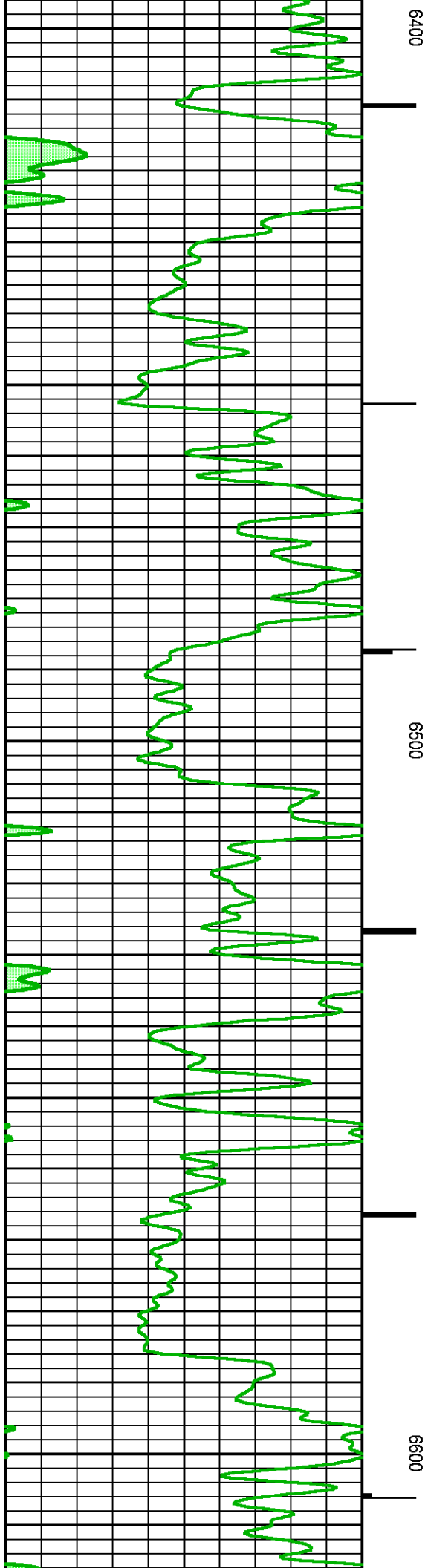


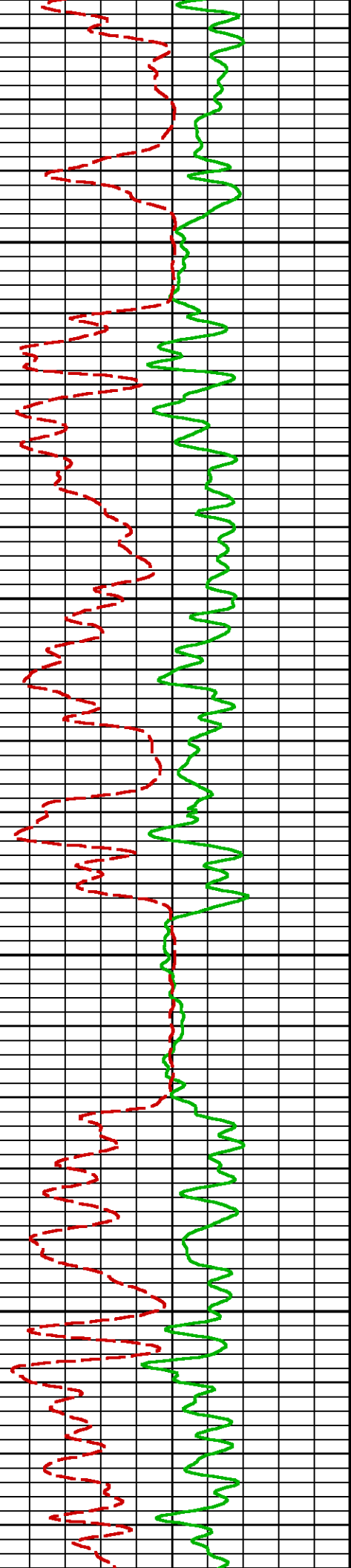
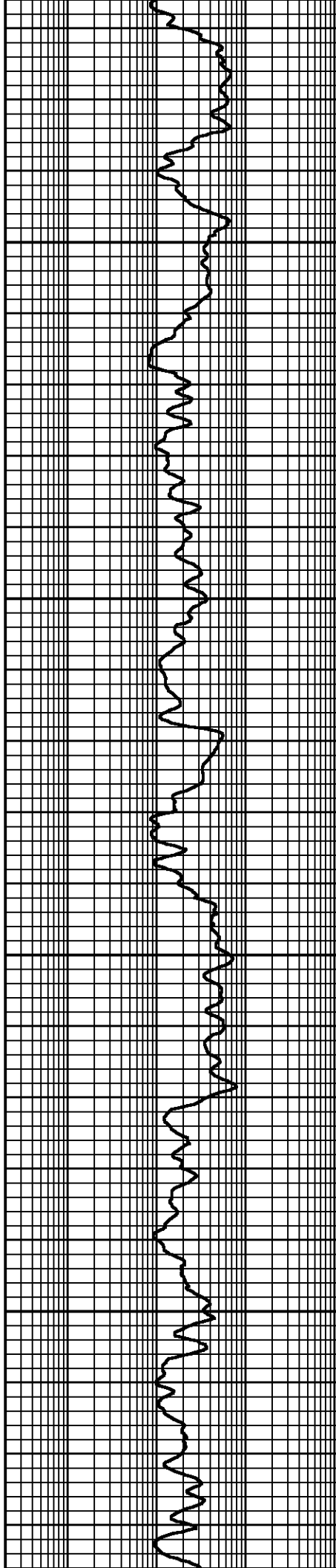
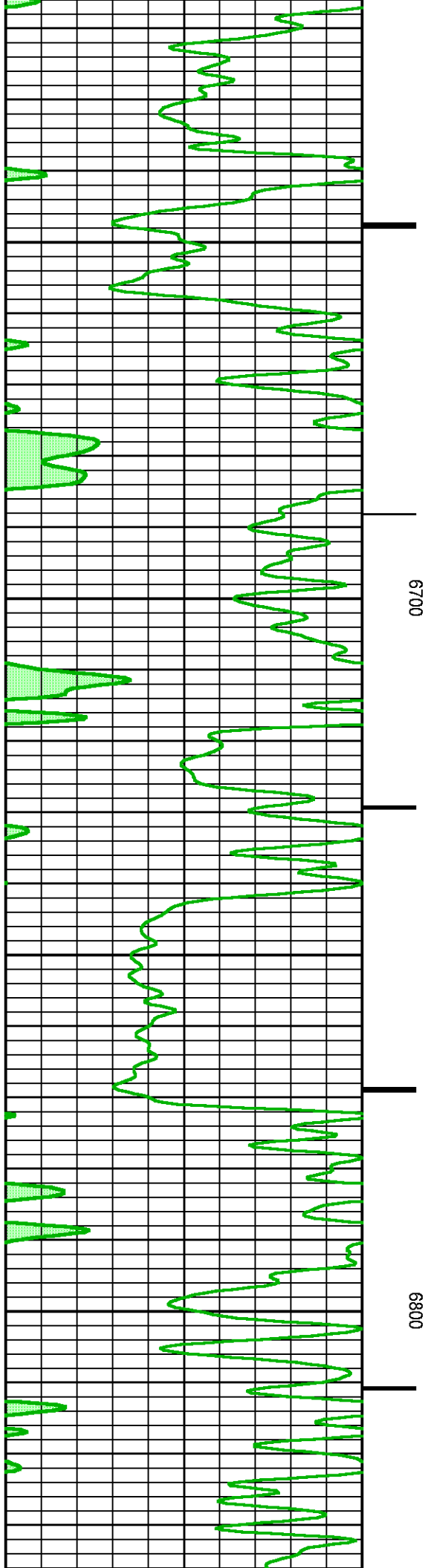


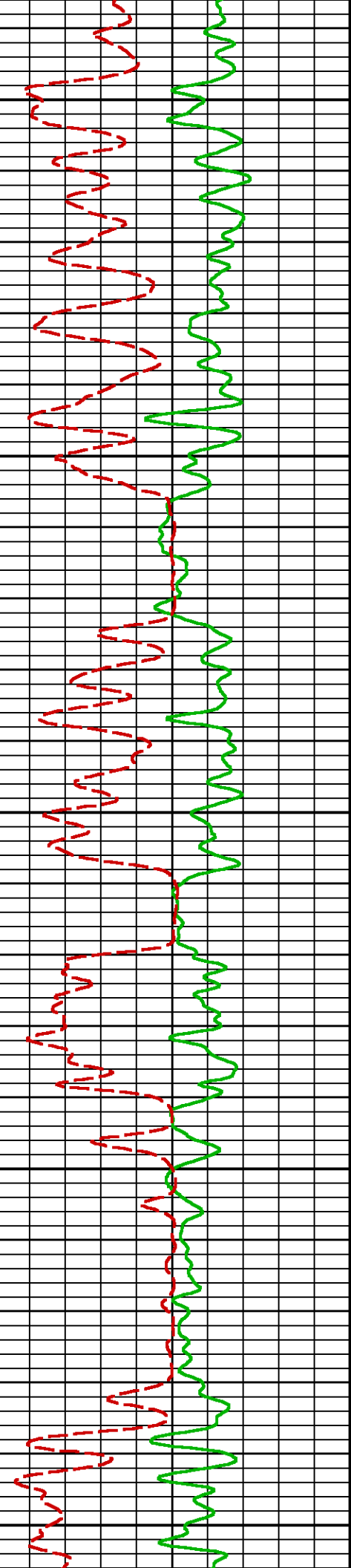
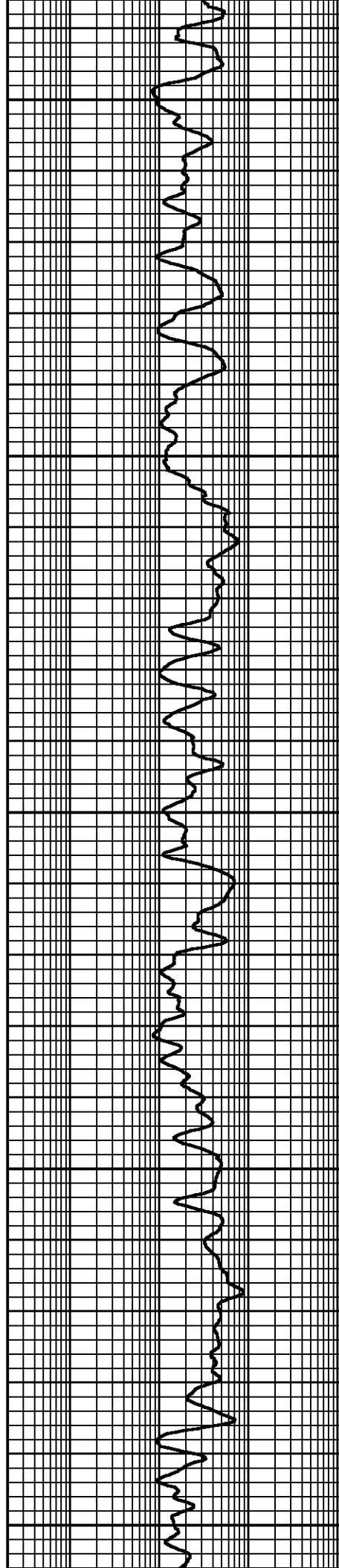
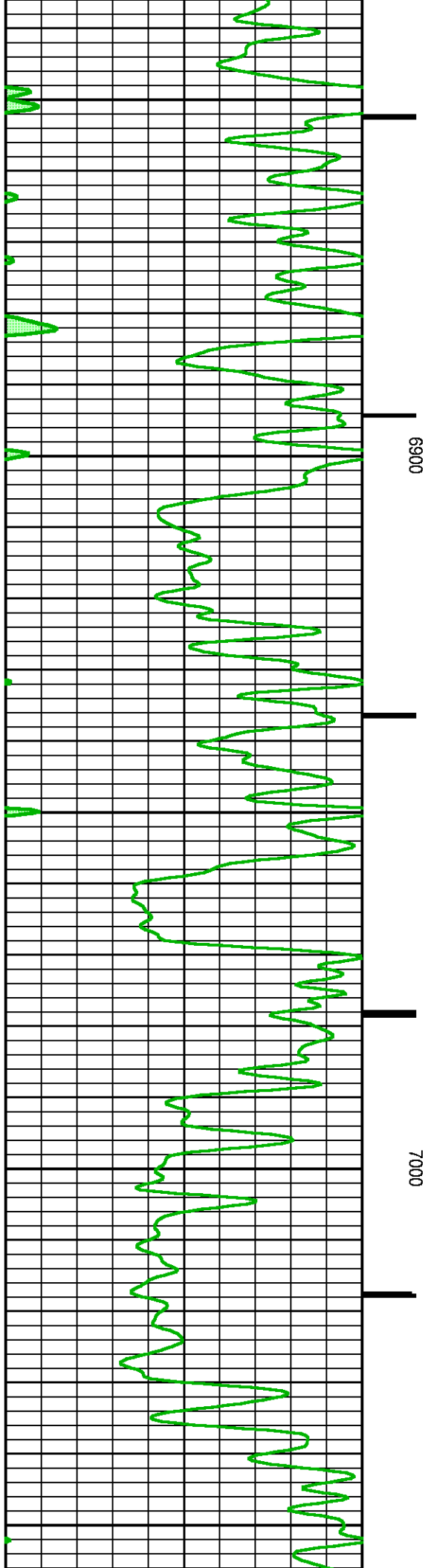


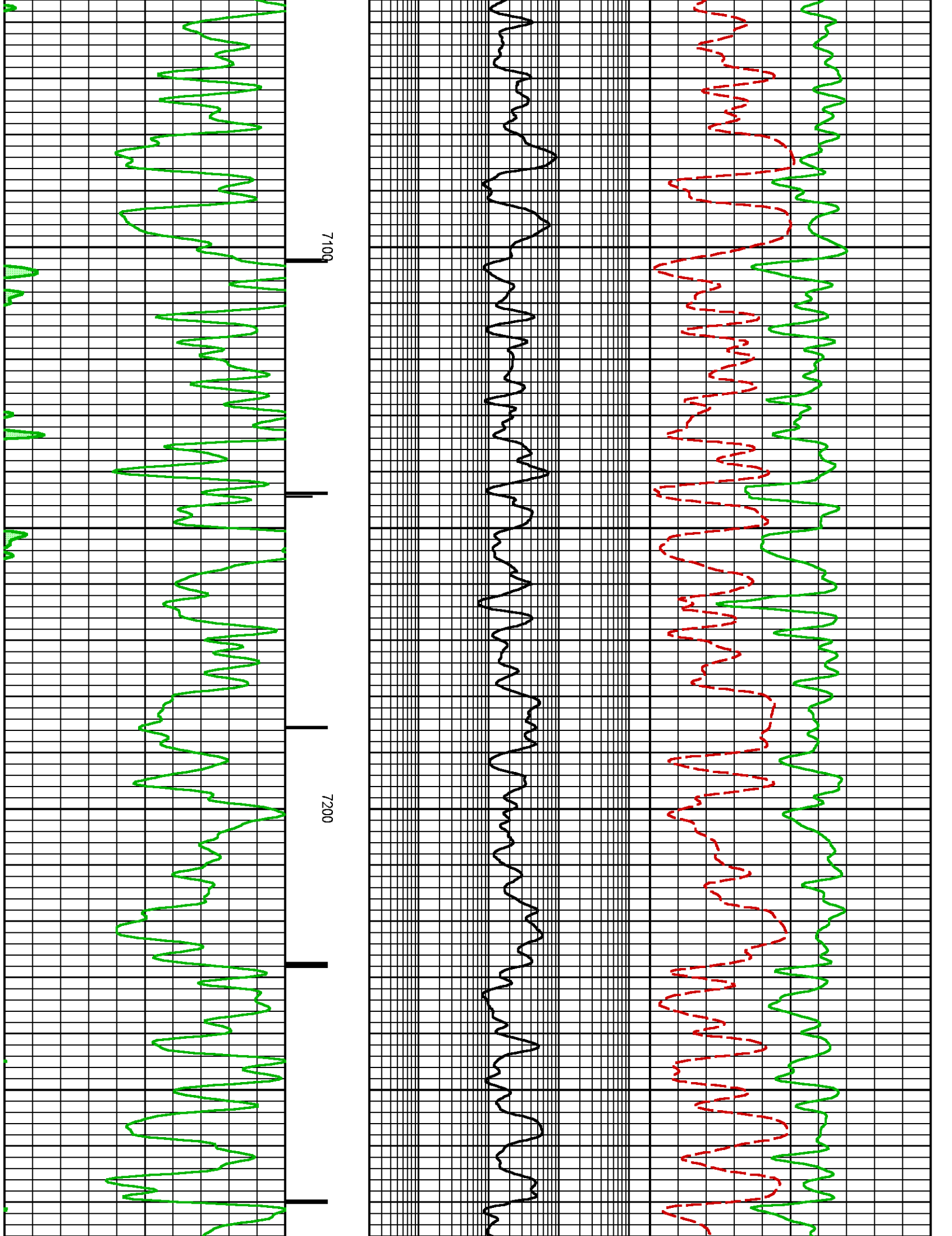


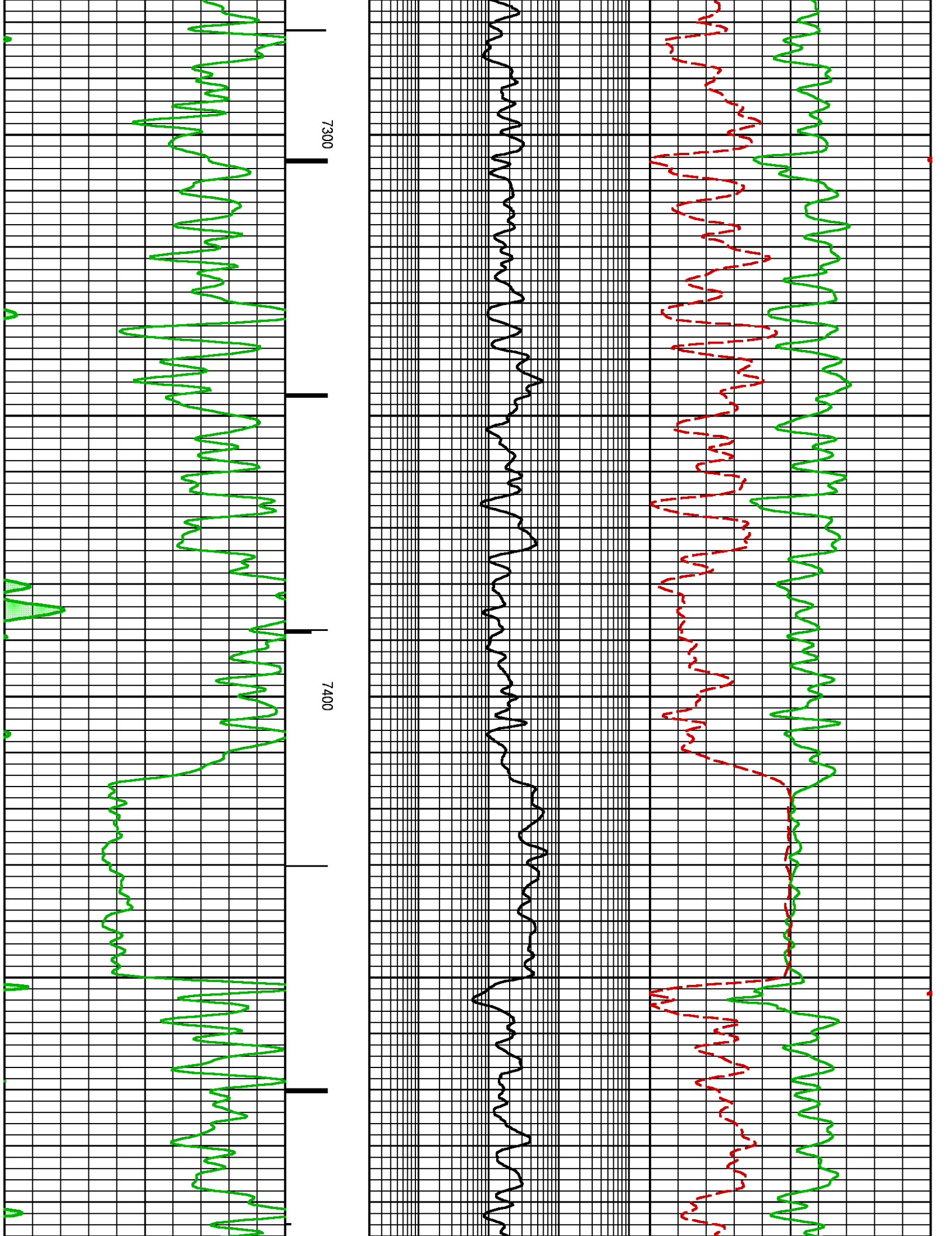


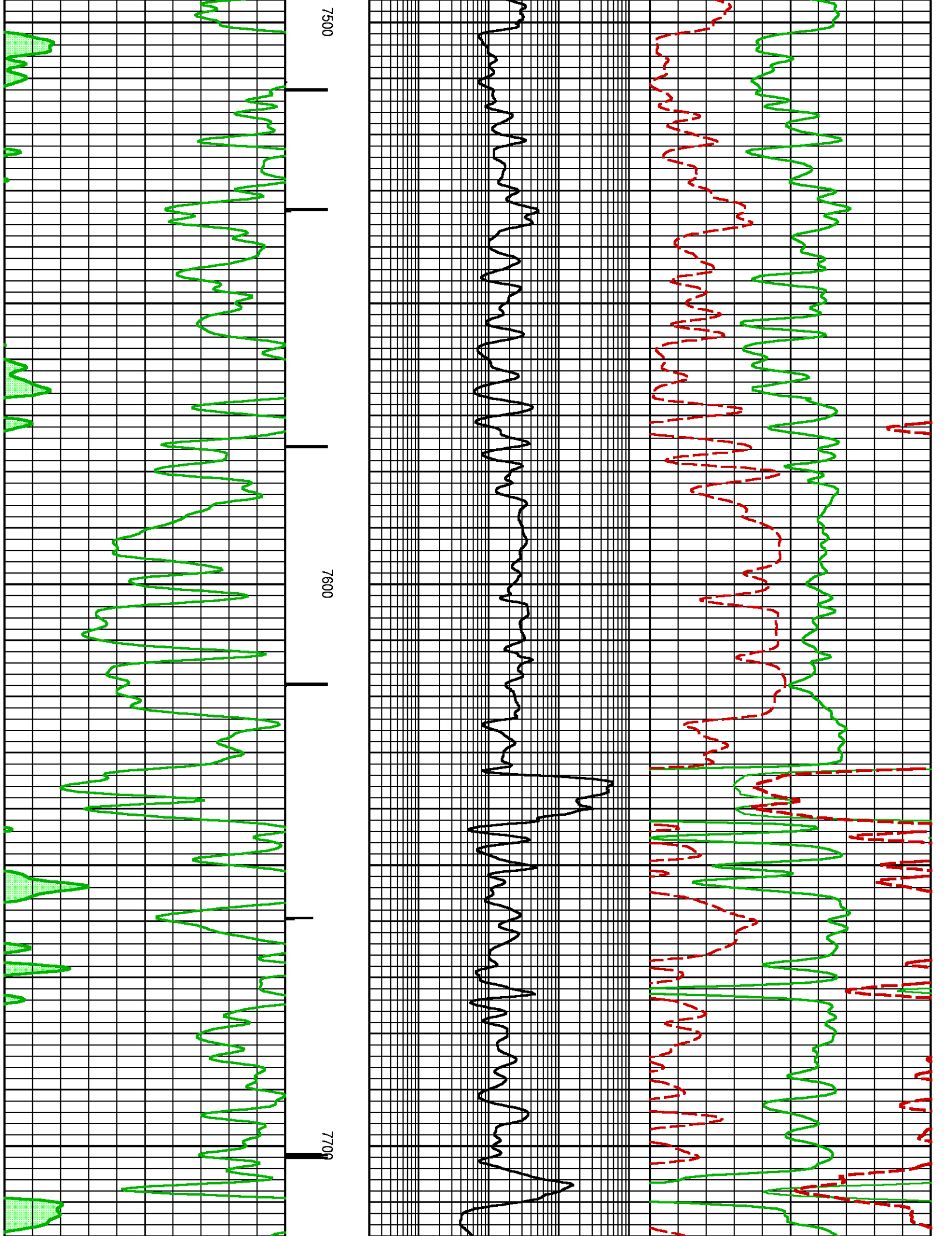


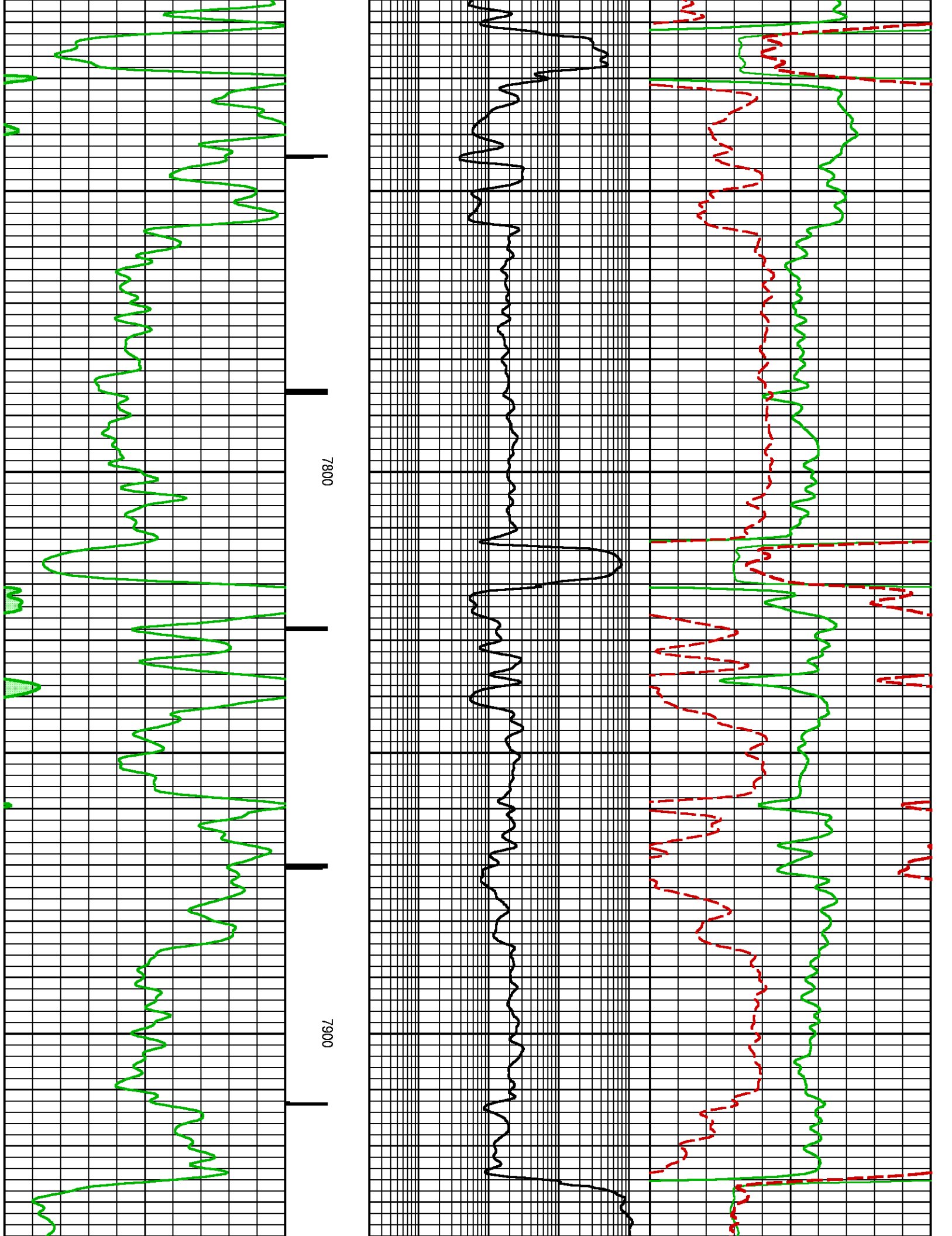


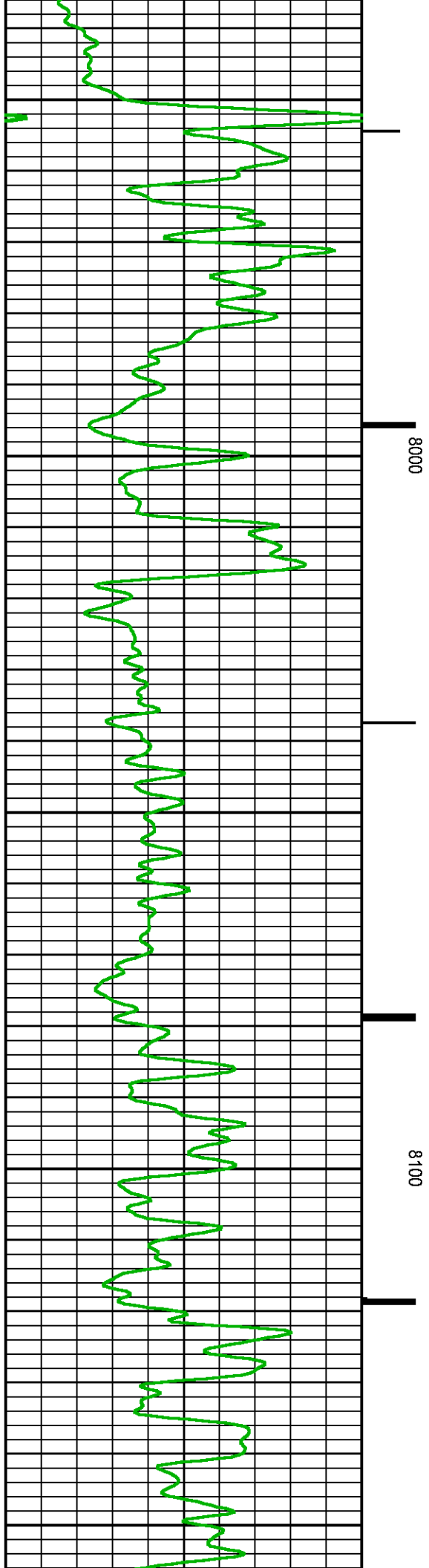
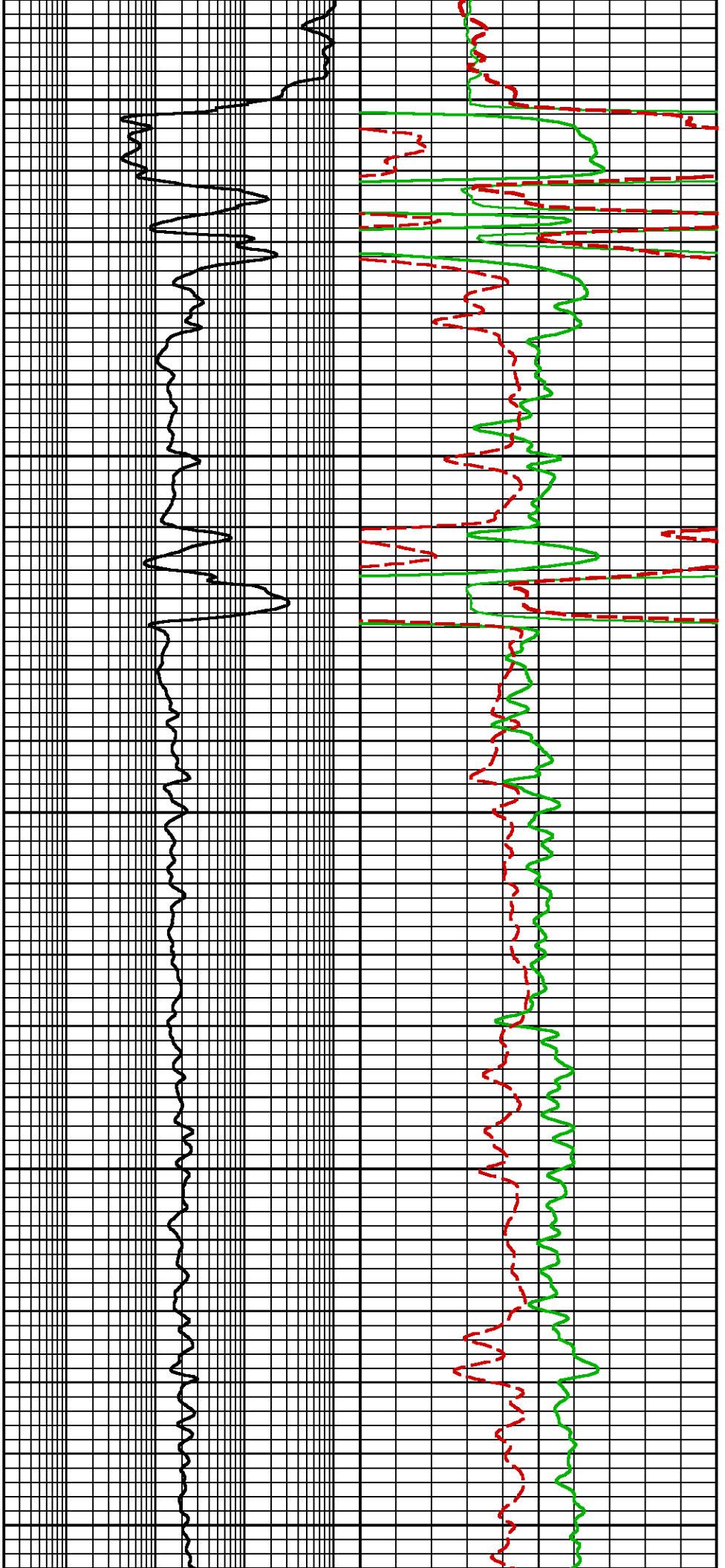


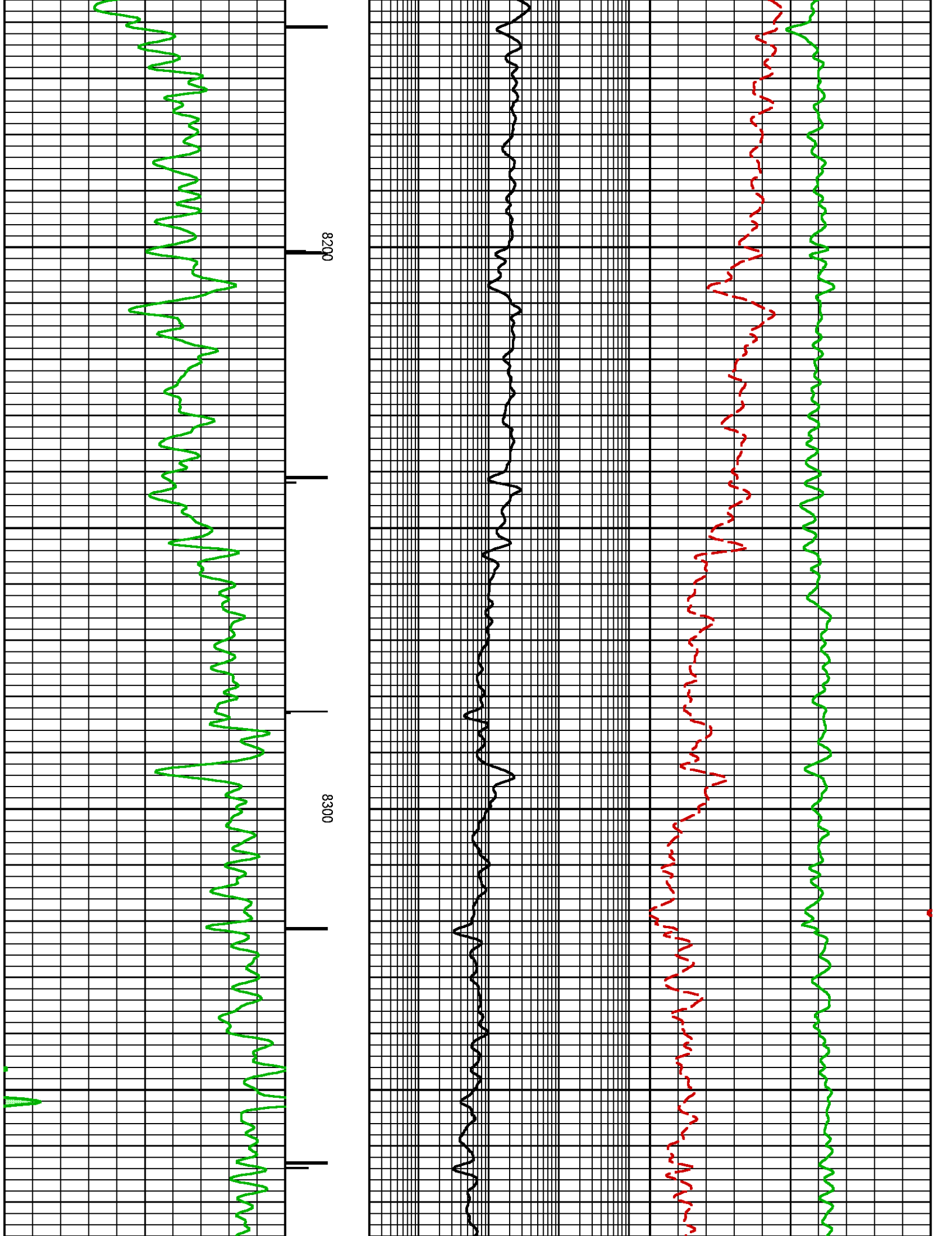


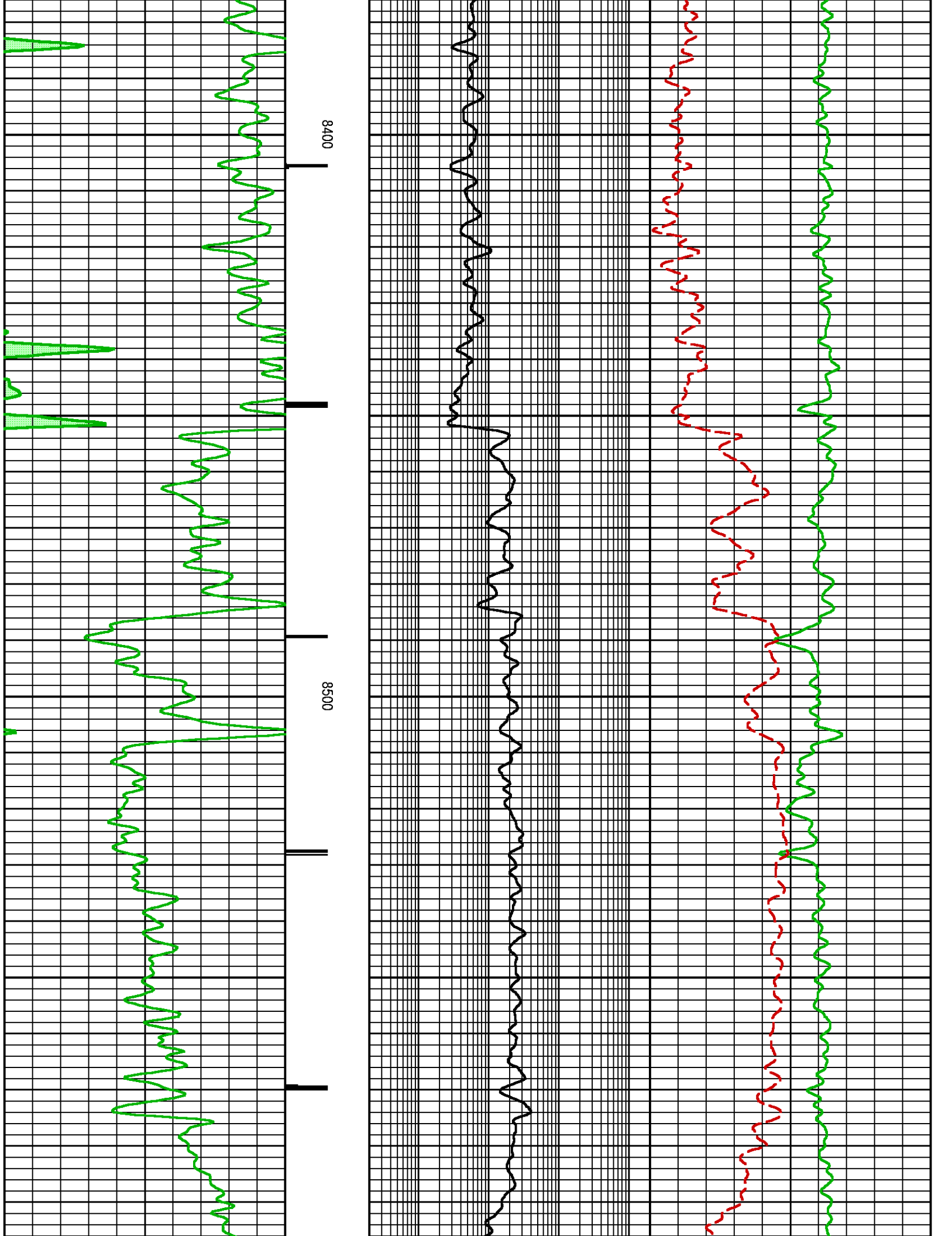


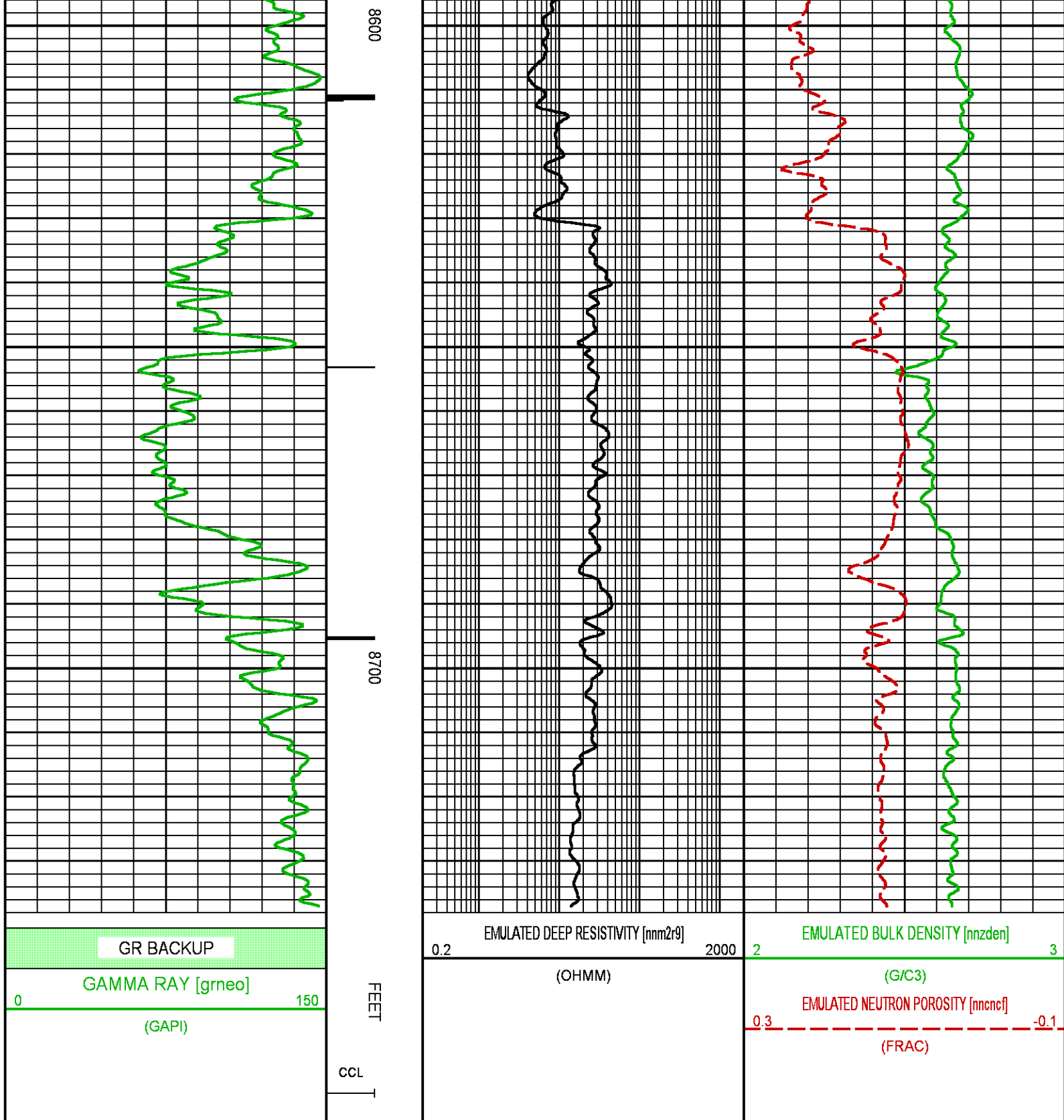












**BAKER
HUGHES**
a GE company



COMPANY
WELL
FIELD
COUNTY

LARAMIE ENERGY LLC
GUNDERSON 0994-13-16E
VEGA
MESA

STATE **COLORADO**

FILE NO:

API NO:

05077105320000

LOCATION:

SEE REMARKS SECTION

ELEVATIONS:

KB 7302.0 FT

DF

GL 7272.0 FT

