

Gunderson 0994-13-05W
Mesa County, CO
Q180240 & RM-180210
Design #1

Company Name: Laramie Energy, LLC
Gunderson 0994-13-05W
Mesa County, CO
Rig: H&P #522
Created By: Will Jircik
Date: 2/28/2018

PROJECT DETAILS: Mesa County, CO
Geodetic System: US State Plane 1983
Datum: North American Datum 1983
Ellipsoid: GRS 1980
Zone: Colorado Central Zone
System Datum: Mean Sea Level

T

M

Azimuths to True North

Magnetic North: 9.46°

Strength: 51327.9snT

Dip Angle: 65.41°

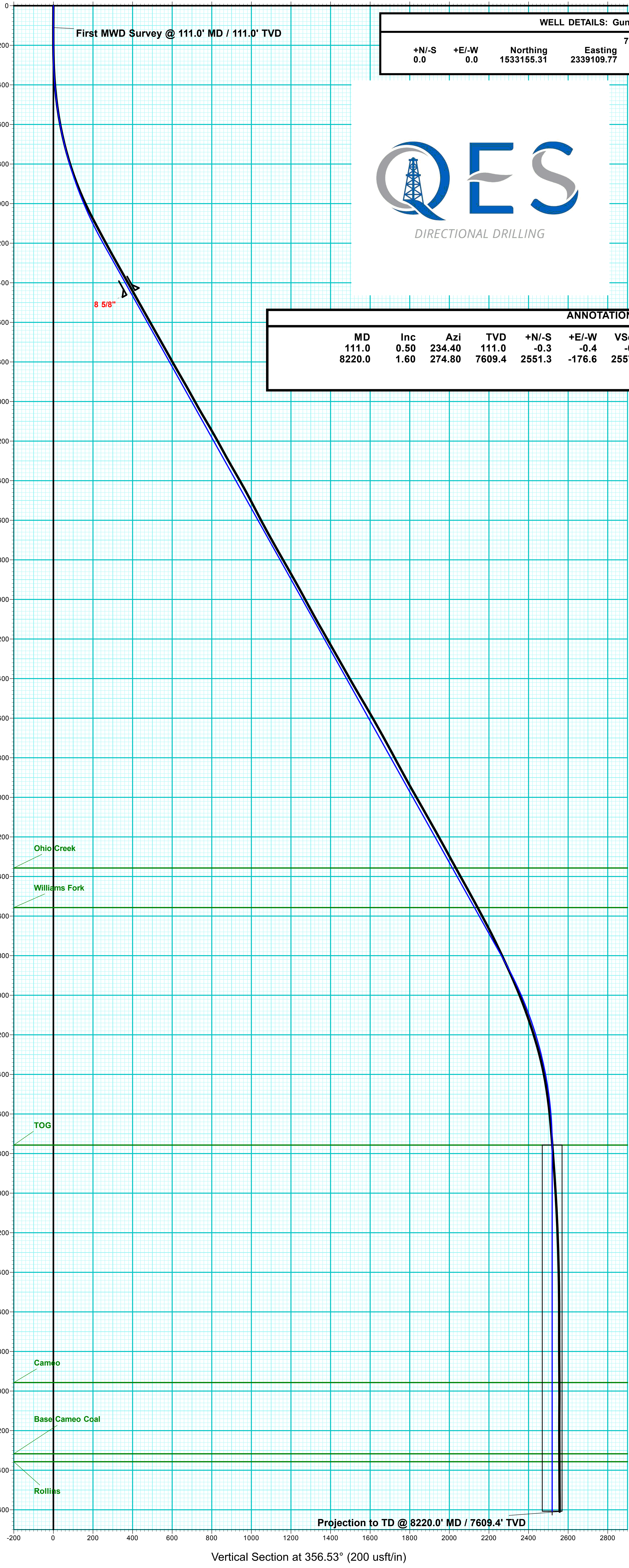
Date: 2/15/2018

Model: USER DEFINED

DESIGN #1 ANNOTATIONS									
MD	Inc	Azi	TVD	+N/-S	+E/-W	VSec	Departure	Annotation	
225.0	0.00	0.00	225.0	0.0	0.0	0.0	0.0	KOP (Build 3° / 100')	
550.3	10.00	20.00	556.6	27.3	9.9	26.6	29.0	EOB @ 10.00° Inc. / 20.00° Azm / Build 3° / 100'	
1240.5	29.20	355.70	1197.1	251.2	17.8	249.7	254.3	EOB @ 29.20° Inc. / 355.70° Azm	
5396.8	29.20	355.70	4825.4	2273.0	-134.1	2276.9	2281.8	Drop 3° / 100'	
6370.0	0.00	0.00	5757.0	2514.9	-152.3	2519.5	2524.4	EOD @ Vertical	
8220.0	0.00	0.00	7607.0	2514.9	-152.3	2519.5	2524.4	TD @ 8220.0' MD / 7607.0' TVD	

FORMATION TOP DETAILS		
TVDPath	MDPath	Formation
4357.0	4860.3	Ohio Creek
4557.0	5089.4	Williams Fork
5757.0	6370.0	TOG
6957.0	7570.0	Cameo
7317.0	7930.0	Base Cameo Coal
7357.0	7970.0	Rollins

DESIGN TARGET DETAILS								
Name	TVD	+N/-S	+E/-W	Northing	Easting	Latitude	Longitude	Shape
PBHL - Gunderson 0994-13-05W	7609.4	2514.9	-152.3	1535673.33	2339022.16	39.280834	-107.835347	Circle (Radius: 50.0)



WELL DETAILS: Gunderson 0994-13-05W					
+N/-S	+E/-W	Northing	Easting	Latitude	Longitude
0.0	0.0	1533155.31	2339109.77	39.273929	-107.834809



ANNOTATIONS									
MD	Inc	Azi	TVD	+N/-S	+E/-W	VSec	Departure	Annotation	
111.0	0.50	234.40	111.0	-0.3	-0.4	-0.3	0.5	First MWD Survey @ 111.0' MD / 111.0' TVD	
8220.0	1.60	274.80	7609.4	2551.3	-176.6	2557.3	2596.9	Projection to TD @ 8220.0' MD / 7609.4' TVD	

