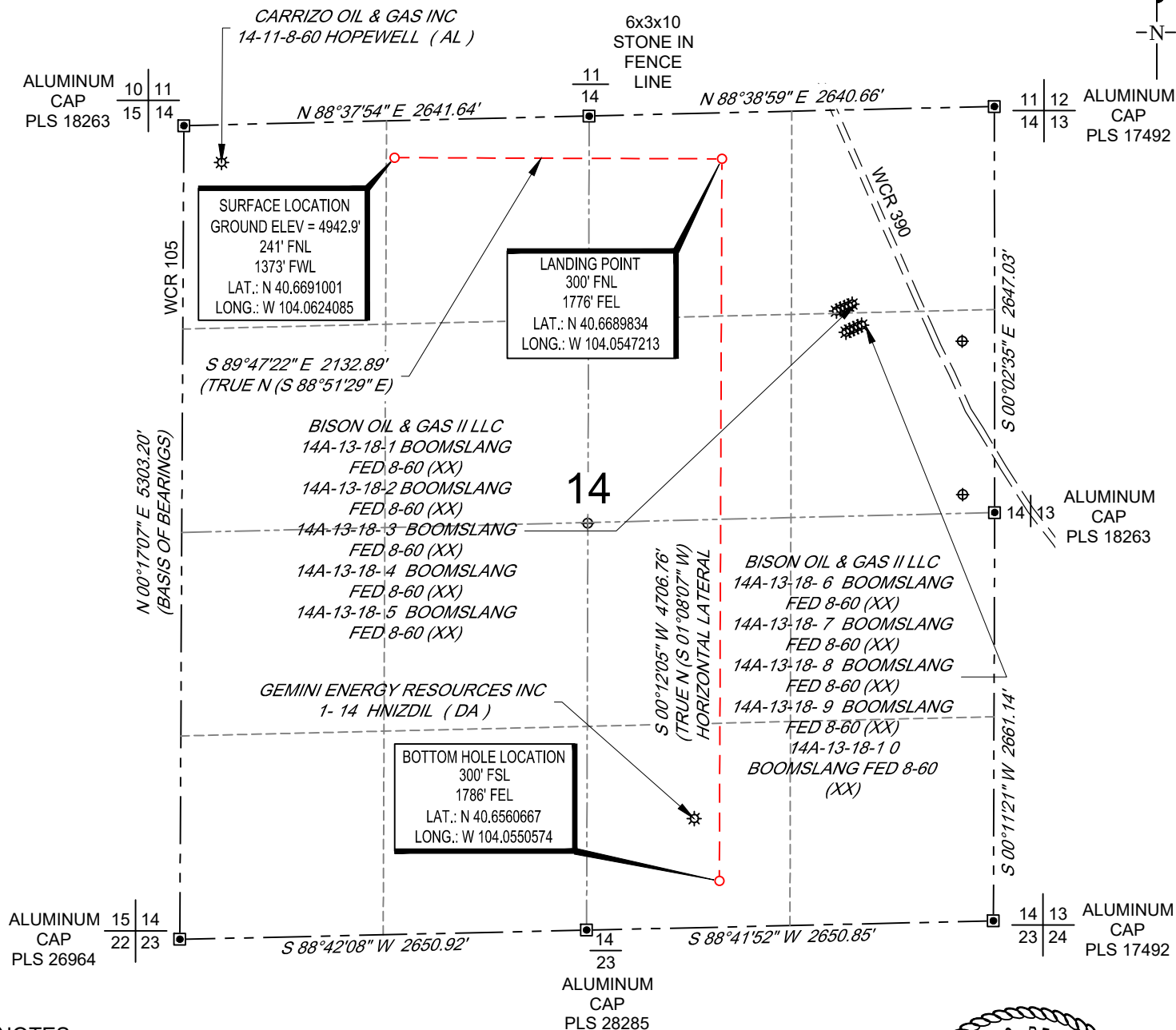


SCALE: 1" = 1000'

0' 500' 1000'

# WELL LOCATION MAP

SHL NE/4 NW/4, SECTION 14, TOWNSHIP 8-N, RANGE 60-W  
LPL NW/4 NE/4, SECTION 14, TOWNSHIP 8-N, RANGE 60-W  
BHL SW/4 SE/4, SECTION 14, TOWNSHIP 8-N, RANGE 60-W  
WELD COUNTY, COLORADO

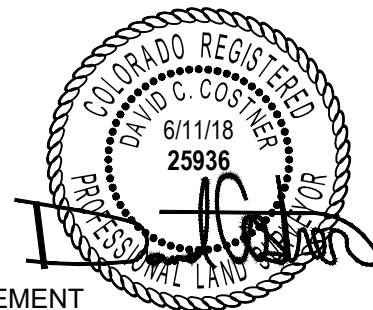


## NOTES

1. Horizontal (NAD 83) and vertical (NAVD 88) datum is based on the Trimble VRS Network or OPUS Solution.
2. All directions, distances, and dimensions shown hereon are based on coordinates from the "Colorado coordinate system of 1983 north zone" (article 52 of title 38, C.R.S.).
3. All section line dimensions shown hereon are based on field measurements of existing monuments and/or physical evidence found in the field unless otherwise indicated.
4. Physical features shown hereon are for graphical representation only.
5. See Form 2A, if applicable for visible improvements within 500' of wellhead.
6. Distances to nearest section lines are measured perpendicularly.
7. This is not a land survey nor land survey plat.

PDOP Reading: 1.5 Instrument Operator: **Brent Garcia**

Date Surveyed: **05/24/2018**



## SURVEYOR'S STATEMENT

The undersigned hereby states that the well location shown hereon was staked on the ground based on existing monumentation and/or physical evidence found in the field and is correct to the best of my knowledge, information and belief.



VERDAD RESOURCES  
**SCHNEIDER 1414-08H**  
JOB NO. 117800

JLS	06/11/2018	REVISION:	
SHEET :	1 OF 1		
FILE:LO_SCHNEIDER_1414_08H			