

LEGEND:

EXISTING LOCATION



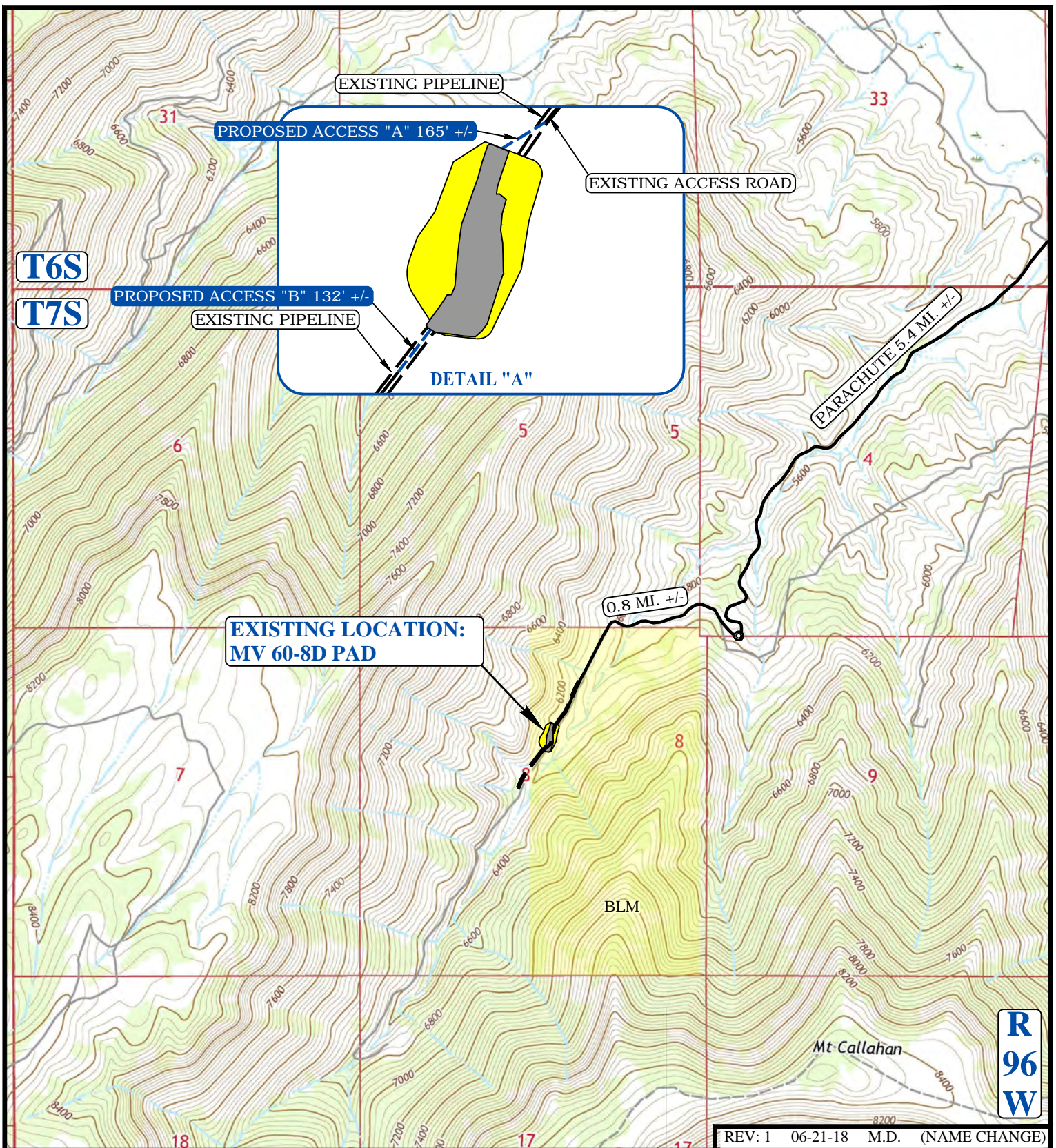
UELS, LLC
Corporate Office * 85 South 200 East
Vernal, UT 84078 * (435) 789-1017



TEP Rocky Mountain LLC

MV 60-8D PAD
SW 1/4 NE 1/4, SECTION 8, T7S, R96W, 6th P.M.
GARFIELD COUNTY, COLORADO

SURVEYED BY	BART HUNTING	02-28-18	SCALE
DRAWN BY	Z.T.	06-12-18	1 : 100,000
ACCESS ROAD MAP			PLAT #5A



NOTE: PARCEL DATA SHOWN HAS BEEN OBTAINED FROM VARIOUS SOURCES AND SHOULD BE USED FOR MAPPING, GRAPHIC AND PLANNING PURPOSES ONLY. NO WARRANTY IS MADE BY UINTAH ENGINEERING AND LAND SURVEYING (UELS) FOR ACCURACY OF THE PARCEL DATA.

LEGEND:

- EXISTING ROAD
- EXISTING PIPELINE
- PROPOSED ROAD



TEP Rocky Mountain LLC

MV 60-8D PAD
 SW 1/4 NE 1/4, SECTION 8, T7S, R96W, 6th P.M.
 GARFIELD COUNTY, COLORADO

SURVEYED BY	BART HUNTING	02-28-18	SCALE
DRAWN BY	Z.T.	06-12-18	1 : 24,000
ACCESS ROAD MAP			PLAT #5B



UELS, LLC
 Corporate Office * 85 South 200 East
 Vernal, UT 84078 * (435) 789-1017