

BRAN-DEX

GAMMA RAY-C.C.L.
CEMENTBOND-V.D.L.

WIRELINE SERVICES

Company	ENCANA ENERGY RESOURCES INC.				
Well	PARKER #21-33				
Field	WATTENBERG				
Country	WELD				
State/Prv	CO.				
Location	840FNL&2032FWL NE NW SEC.-33,TWP.-3N,RGE.-6TW				
Permanent Datum	GL	Elevation	4799	Elevation	K.B. 4818 D.F. 4818 GL 4799
Log Measured From	K.B.				
Drilling Measured From	K.B.				
Date	MAY-7-2002				
Run Number	ONE				
Depth Driller	7881				
Depth Logger	7821				
Bottom Logged Interval	7815				
Top Log Interval	6010				
Open Hole Size					
Type Fluid					
Density / Viscosity					
Max. Recorded Temp.	243				
Estimated Cement Top					
Time Well Ready					
Time Logger on Bottom					
Equipment Number	#12				
Location	STERLING				
Recorded By	GARDNER				
Witnessed By	MIKE CONNERY				
Run Number	Bit	From	To	Size	Weight
					From To
Casing Record	Size	Wgt/ft	Top	Bottom	
Surface String					
Prol. String	4 1/2				
Production String					
Liner					

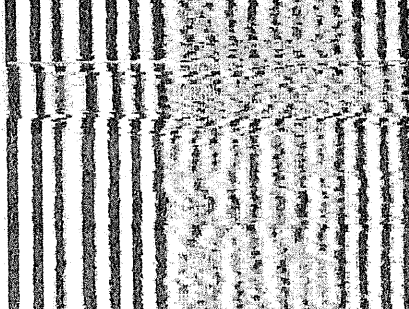
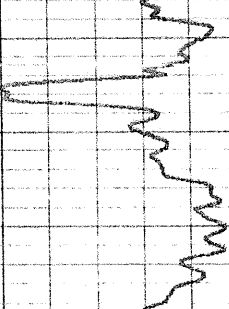
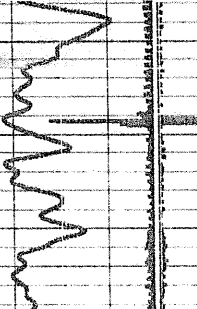
>>> Fold Here >>>

All interpretations are opinions based on inferences from electrical or other measurements and we cannot and do not guarantee the accuracy or correctness of any interpretation, and we shall not, except in the case of gross or willful negligence on our part, be liable or responsible for any loss, costs, damages, or expenses incurred or sustained by anyone resulting from any interpretation made by any of our officers, agents or employees. These interpretations are also subject to our general terms and conditions set out in our current Price Schedule.

Comments

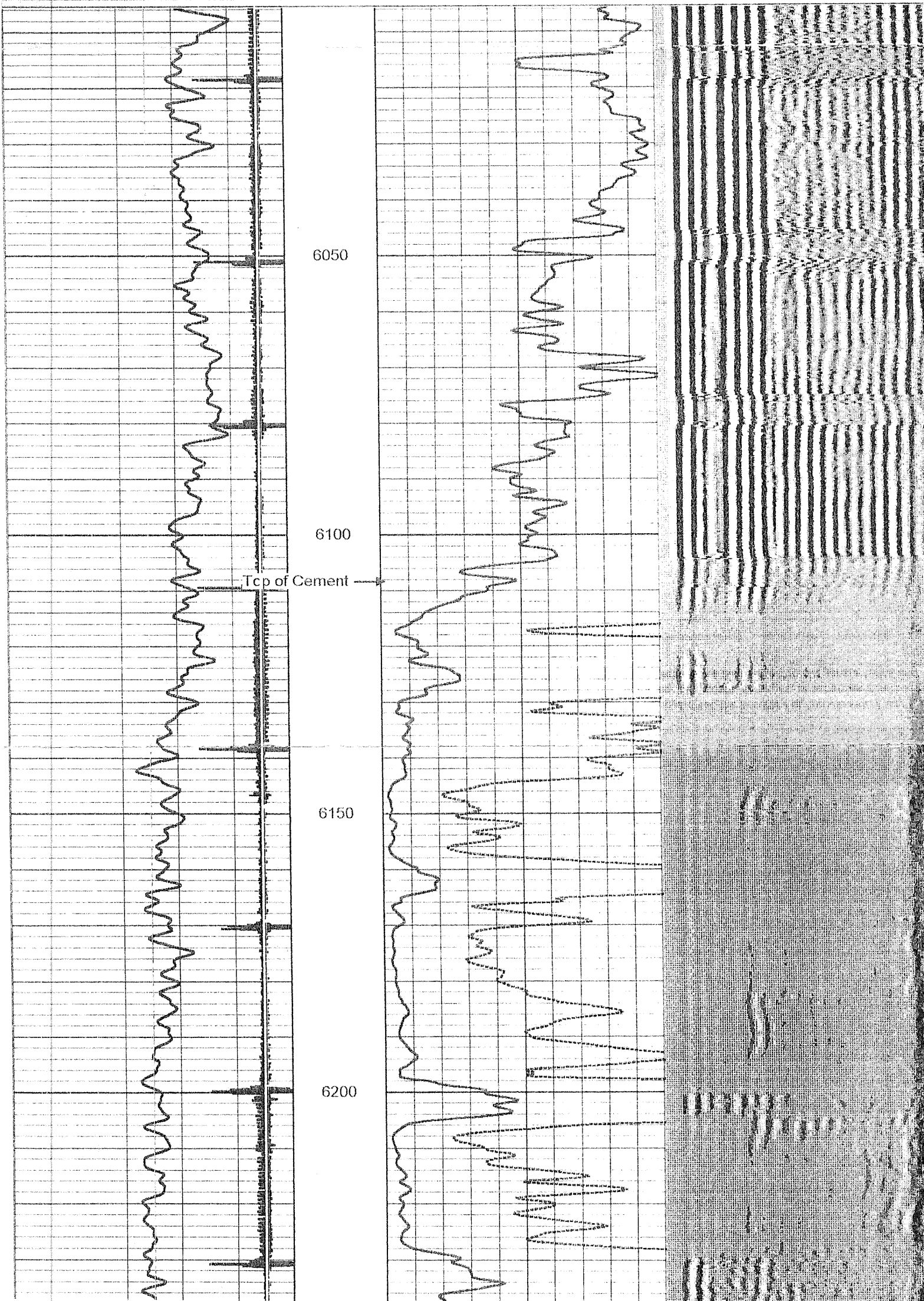
Database File: park.db
Dataset Pathname: pass3
Presentation Format: cbl35
Dataset Creation: Tue May 07 09:35:25 2002 by Log 6.0
Charted by: Depth in Feet scaled 1:240

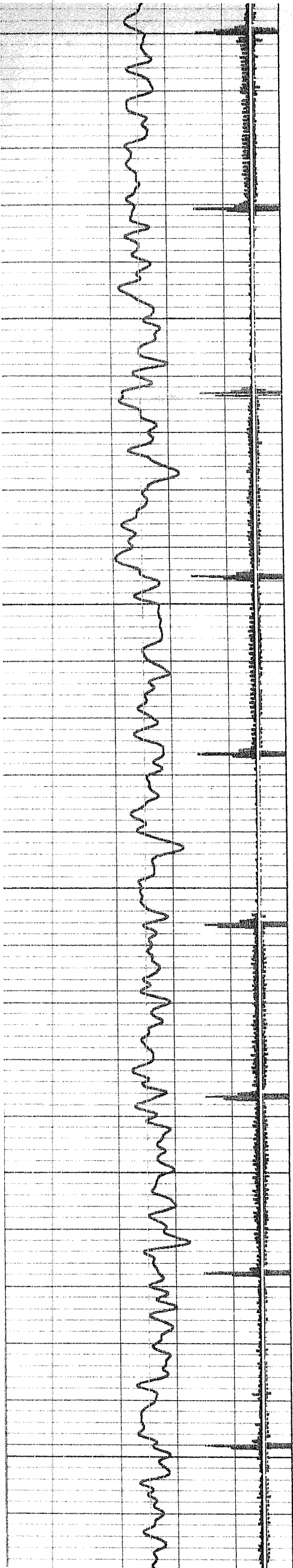
9	Collar Locator	-1	0	Amplified Amplitude (mV)	10	300	Variable Density	12
0	Gamma Ray	350	0	Amplitude (mV)	100			



Database File: park.db
Dataset Pathname: pass3
Presentation Format: chl35
Dataset Creation: Tue May 07 09:35:25 2002 by Log 6.0
Charted by: Depth in Feet scaled 1:240

9	Collar Locator	-1	0	Amplified Amplitude (mV)	10	300	Variable Density	1200
0	Gamma Ray	350	0	Amplitude (mV)	100			





6200

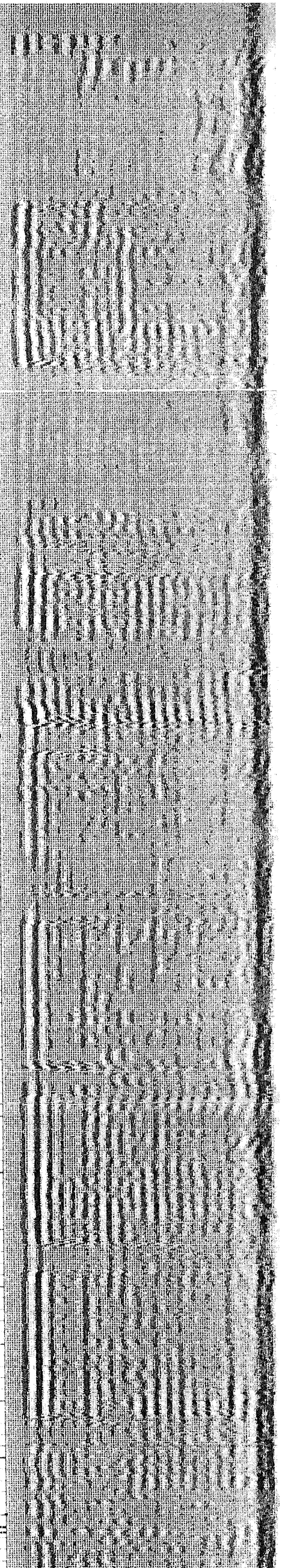
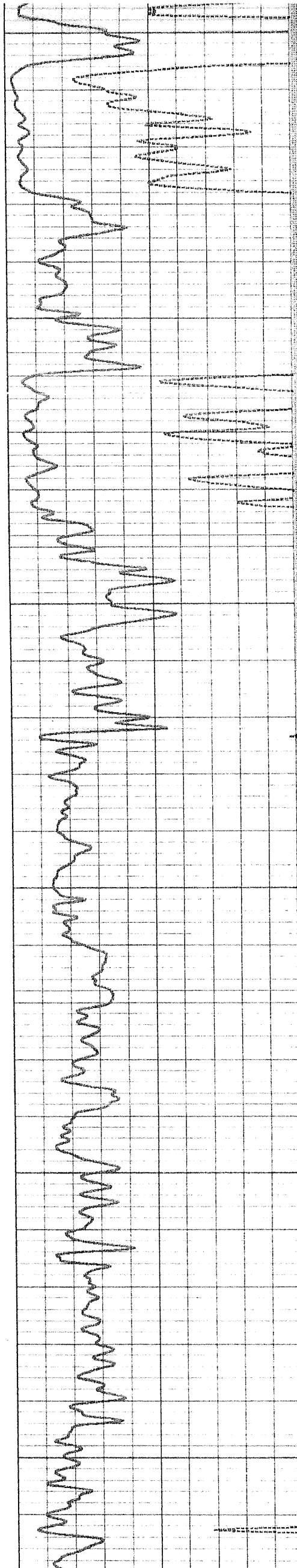
6250

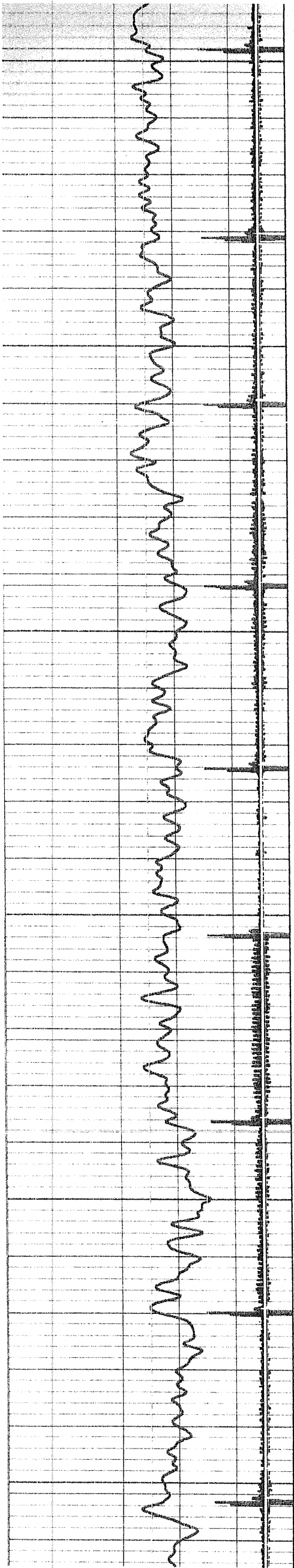
6300

6350

6400

6450





6450

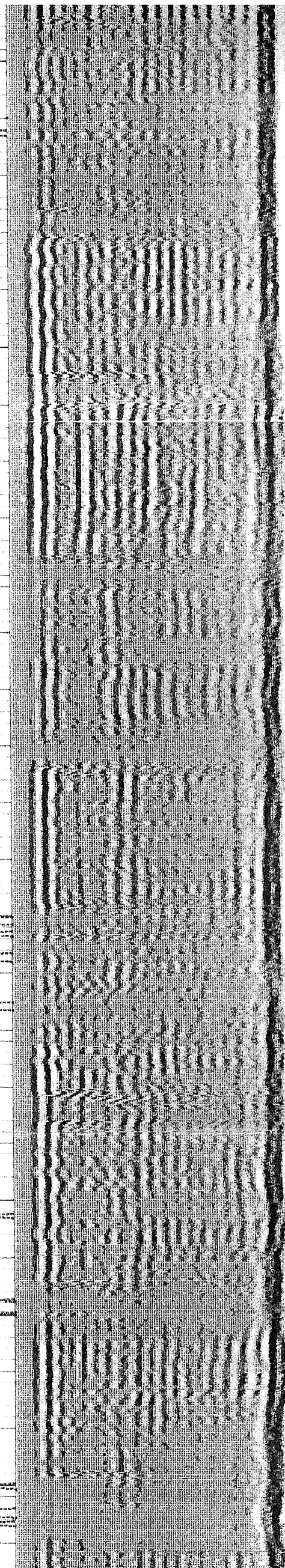
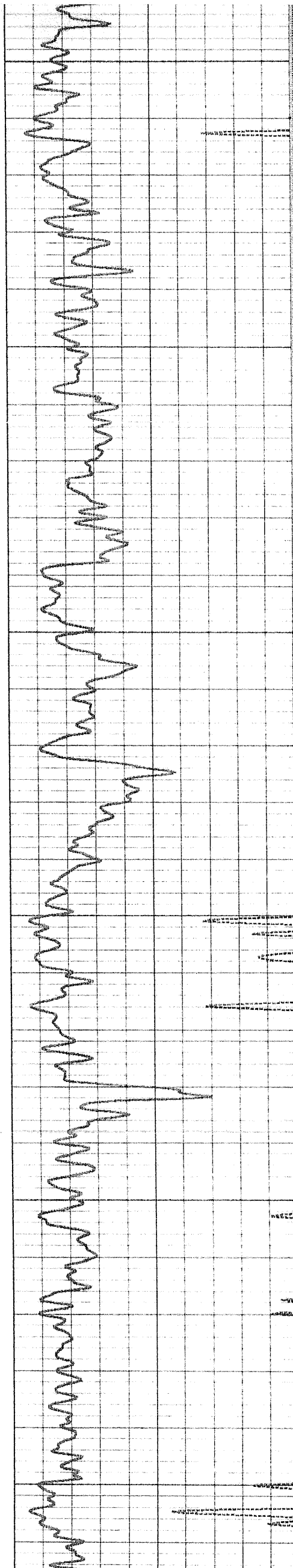
6500

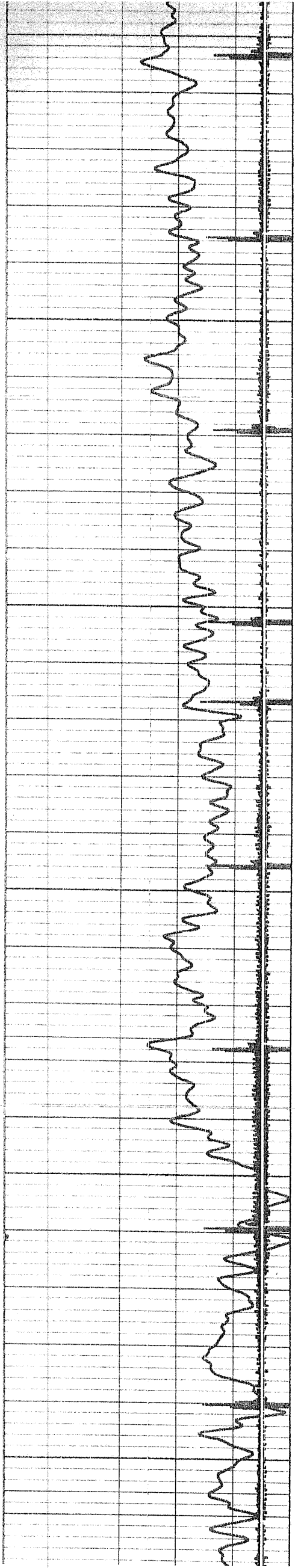
6550

6600

6650

6700





6700

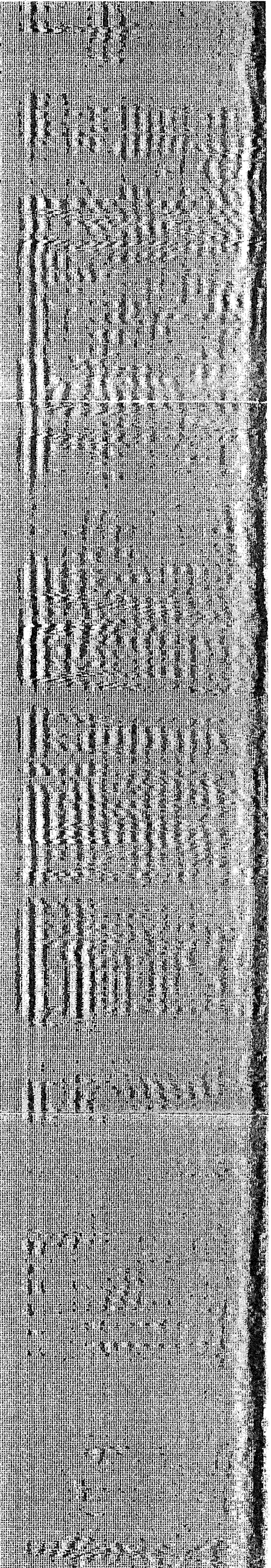
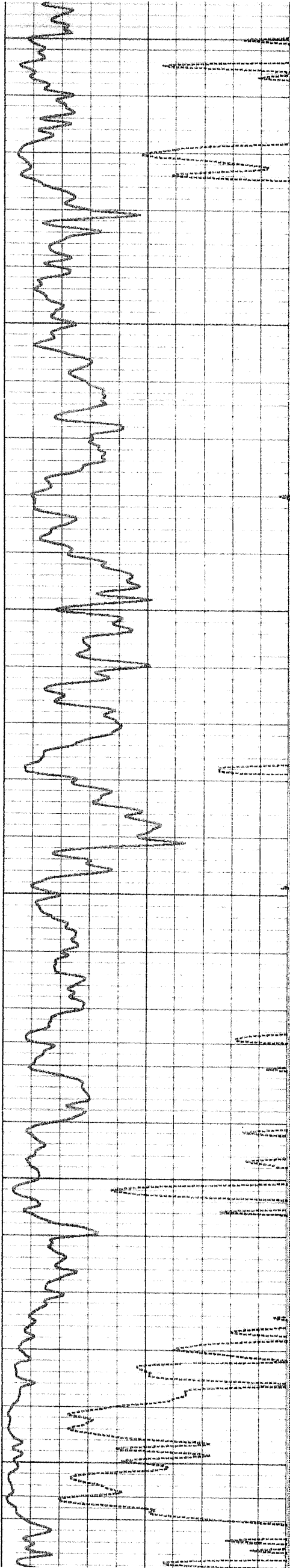
6750

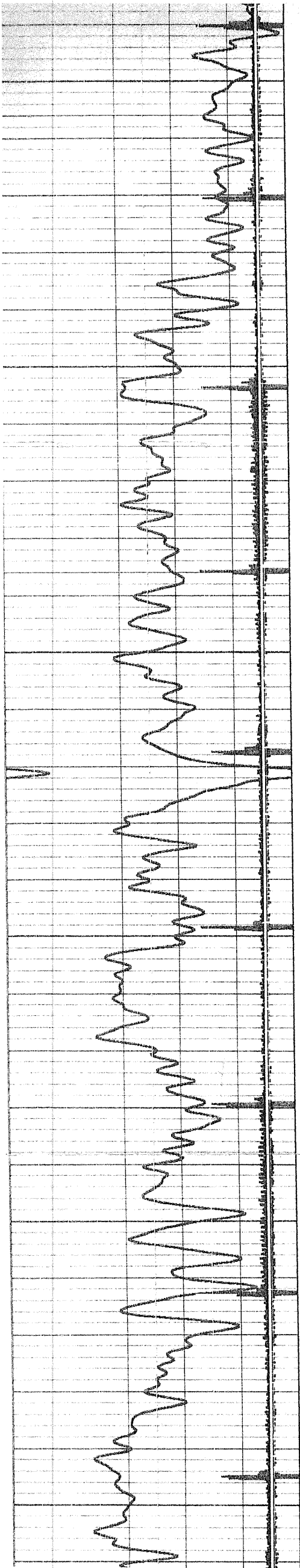
6800

6850

6900

6950





6950

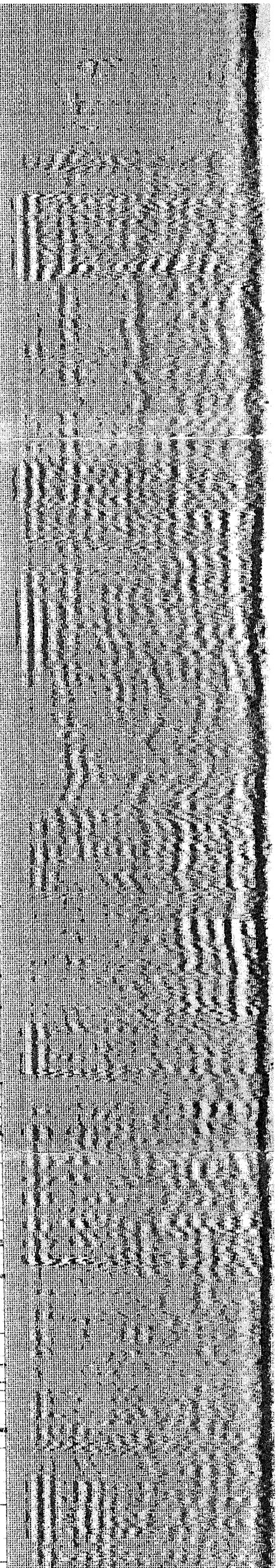
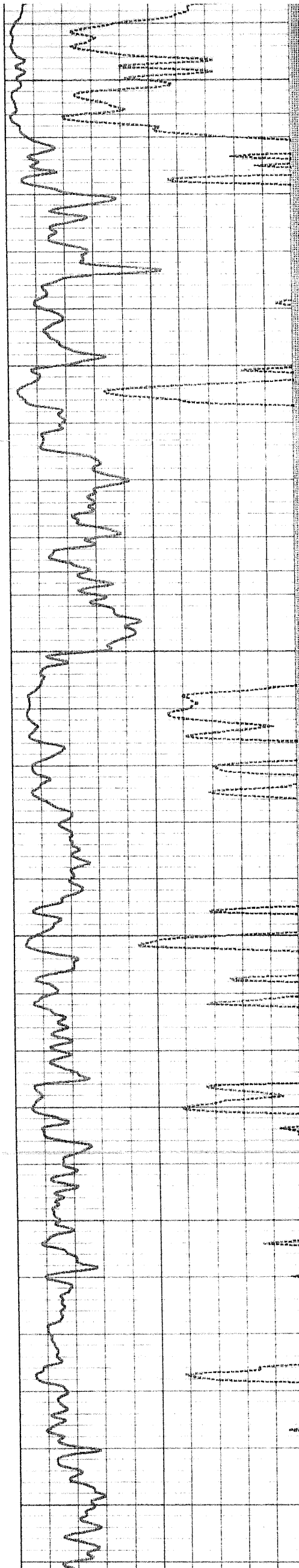
7000

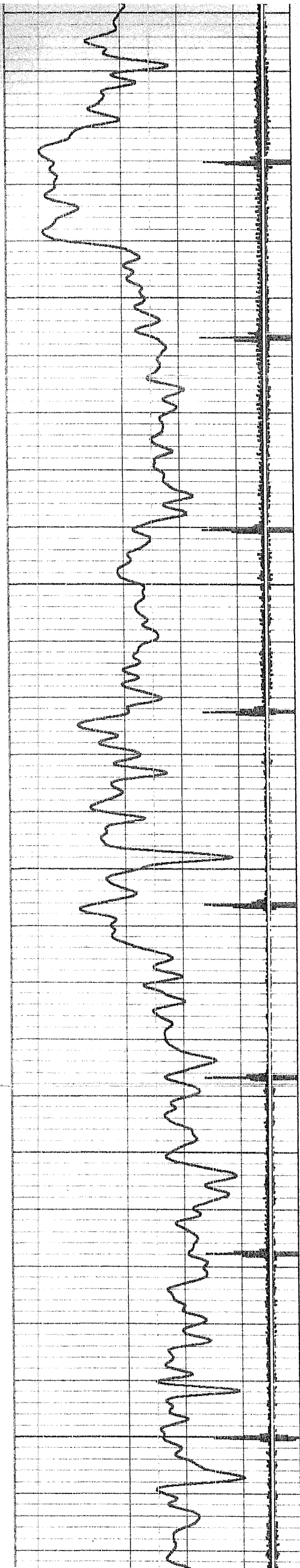
7050

7100

7150

7200





7200

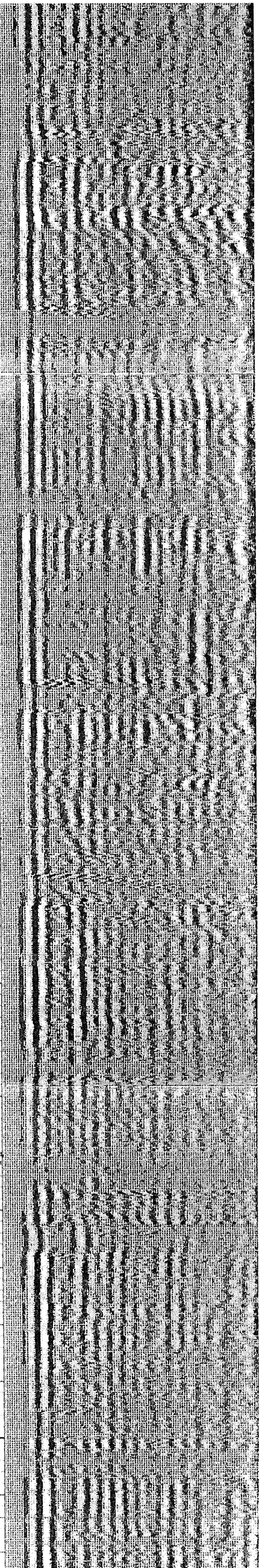
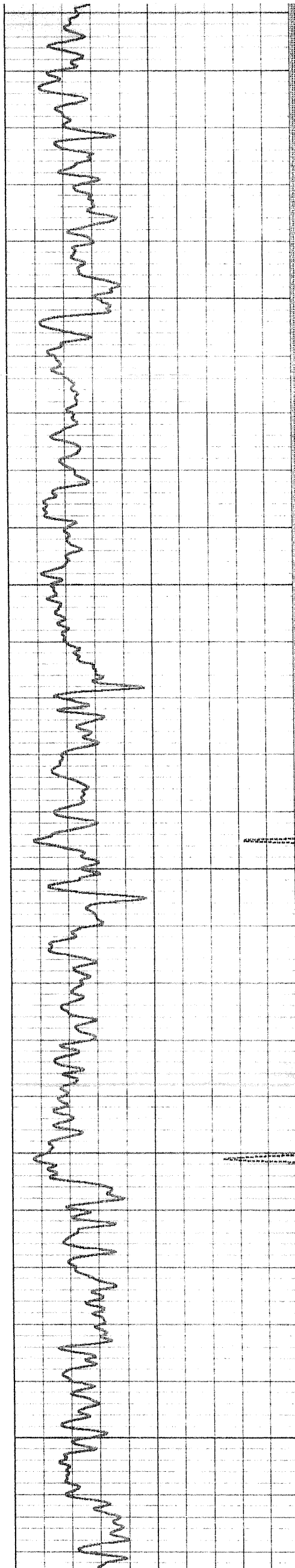
7250

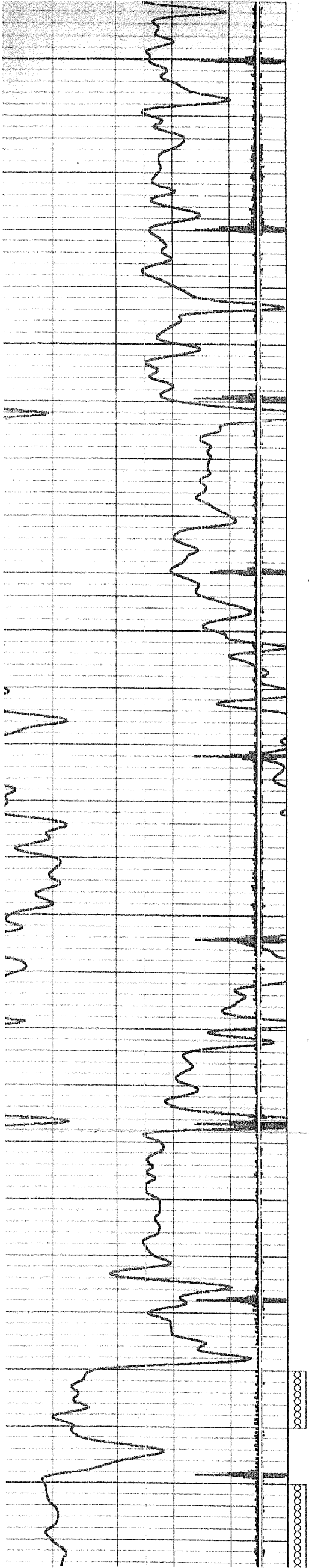
7300

7350

7400

7450





7450

7500

7550

7600

7650

7700

