

Inspection Photos 06/29/18
Location: NGL Water Solutions C6A Well and UIC Disposal Facility
API # 05-123-40968



Signage and wellhead housing (looking west)



View of wellhead tree in building

Inspection Photos 06/29/18
Location: NGL Water Solutions C6A Well and UIC Disposal Facility
API # 05-123-40968



Photo of flanged connection at wellhead (this connection did not fail)



View of NGL C6A facility and battery looking west; note the impacted soils being remediated at west end of location.

Inspection Photos 06/29/18
Location: NGL Water Solutions C6A Well and UIC Disposal Facility
API # 05-123-40968



Failed C6A flange connection resulting in spill; at west end of pump building; insulation removed



View of both the C6 and C6A produced water injection flowlines at the discharge of the injection pumps.

Inspection Photos 06/29/18
Location: NGL Water Solutions C6A Well and UIC Disposal Facility
API # 05-123-40968



Photo of the C6A injection pump flowline tie in - inside pump building

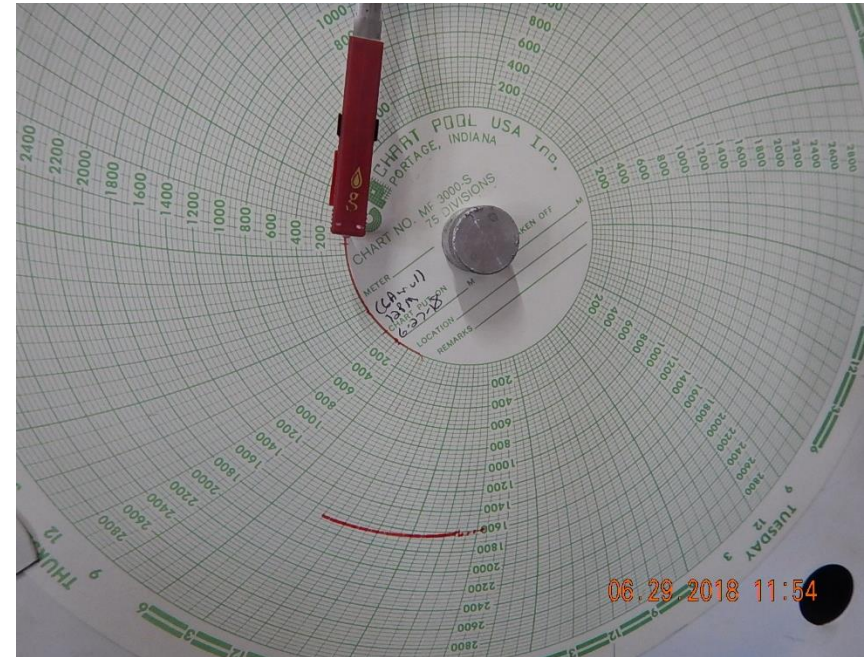


Photo of injection pressure chart at the time of failure