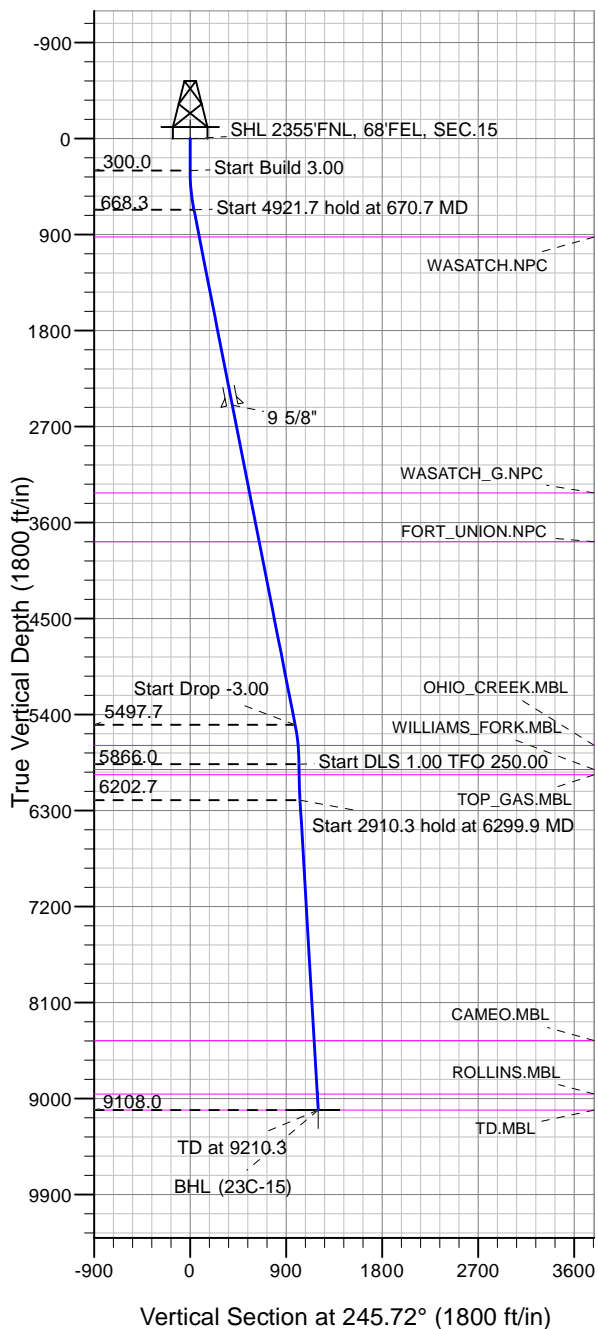
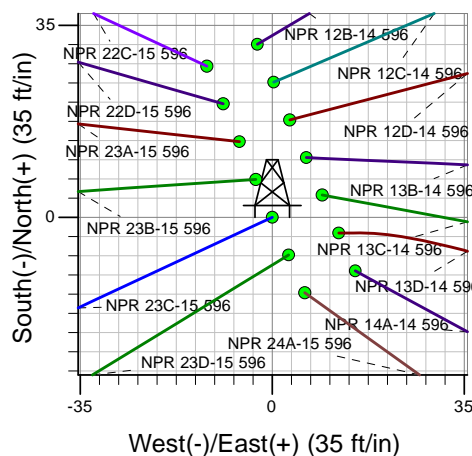
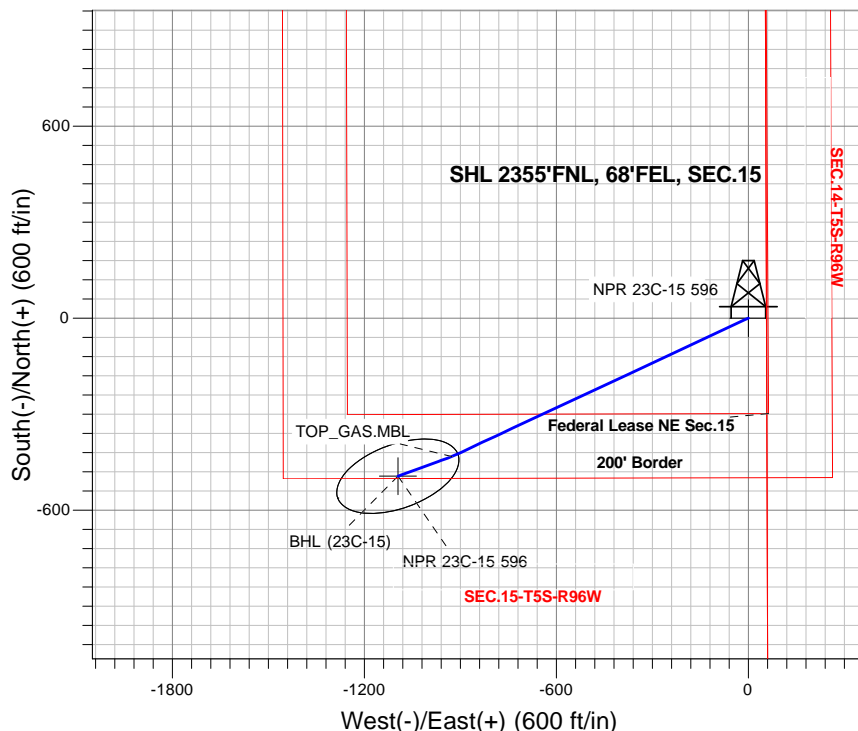


Well Name: **NPR 23C-15 596**  
 Surface Location: NPR H15 596 North Pad Sec.15-T5S-R96W  
 NAD 1927 - Western US , Universal Transverse Mercator (US Survey Feet)  
 Zone 12N (114 W to 108 W)  
 Ground Elevation: 6429.0  
 +N/-S+E/-W Northing Easting Latitude Longitude Slot  
 0.0 0.0 14398956.40 2444316.39 39.615893 -108.145679  
 Original Well Elev WELL @ 6453.0ft (Original Well Elev)



### Caerus Oil and Gas LLC



NPR 23C-15 596  
 Plan #2 (6-14-18)  
 9:11, June 15 2018



Azimuths to True North  
 Magnetic North: 9.58°  
 Magnetic Field  
 Strength: 51466.0nT  
 Dip Angle: 65.82°  
 Date: 6/15/2018  
 Model: HDGM

#### DESIGN TARGET DETAILS

Name	TVD	+N/-S	+E/-W	Latitude	Longitude	Shape
SHL 2355'FNL, 68'FEL, SEC.15	1.0	0.0	0.0	39.615893	-108.145679	Point
BHL (23C-15)	9108.0	-493.9	-1095.0	39.614537	-108.149566	Ellipse (Radii: L200.0 W100.0)

#### SECTION DETAILS

Sec	MD	Inc	Azi	TVD	+N/-S	+E/-W	Dleg	TFace	VFace	Target
1	0.0	0.00	0.00	0.0	0.0	0.0	0.00	0.00	0.0	
2	300.0	0.00	0.00	300.0	0.0	0.0	0.00	0.00	0.0	
3	670.7	11.12	244.97	668.3	-15.2	-32.5	3.00	244.97	35.9	
4	5592.4	11.12	244.97	5497.7	-416.8	-892.5	0.00	0.00	985.0	
5	5963.0	0.00	0.00	5866.0	-432.0	-925.0	3.00	180.00	1020.8	
6	6299.9	3.37	250.00	6202.7	-435.4	-934.3	1.00	250.00	1030.7	
7	9210.3	3.37	250.00	9108.0	-493.9	-1095.0	0.00	0.00	1201.2	BHL (23C-15)



## **Caerus Oil and Gas LLC**

**SEC.15-T5S-R96W**

**NPR H15 596 North Pad Sec.15-T5S-R96W**

**NPR 23C-15 596**

**Wellbore #1**

**Plan: Plan #2 (6-14-18)**

## **Standard Planning Report**

**15 June, 2018**

<b>Database:</b>	US_EDM	<b>Local Co-ordinate Reference:</b>	Well NPR 23C-15 596
<b>Company:</b>	Caerus Oil and Gas LLC	<b>TVD Reference:</b>	WELL @ 6453.0ft (Original Well Elev)
<b>Project:</b>	SEC.15-T5S-R96W	<b>MD Reference:</b>	WELL @ 6453.0ft (Original Well Elev)
<b>Site:</b>	NPR H15 596 North Pad Sec.15-T5S-R96W	<b>North Reference:</b>	True
<b>Well:</b>	NPR 23C-15 596	<b>Survey Calculation Method:</b>	Minimum Curvature
<b>Wellbore:</b>	Wellbore #1		
<b>Design:</b>	Plan #2 (6-14-18)		

<b>Project</b>	SEC.15-T5S-R96W, Garfield County, CO		
<b>Map System:</b>	Universal Transverse Mercator (US Survey Feet)	<b>System Datum:</b>	Mean Sea Level
<b>Geo Datum:</b>	NAD 1927 - Western US		Using Well Reference Point
<b>Map Zone:</b>	Zone 12N (114 W to 108 W)		Using geodetic scale factor

Site	NPR H15 596 North Pad Sec.15-T5S-R96W				
Site Position:		Northing:	14,398,987.82 usft	Latitude:	39.615979
From:	Lat/Long	Easting:	2,444,312.67 usft	Longitude:	-108.145689
Position Uncertainty:	0.0 ft	Slot Radius:	13-3/16 "	Grid Convergence:	1.82

Well	NPR 23C-15 596					
Well Position	+N/-S	-31.5 ft	Northing:	14,398,956.40 usft	Latitude:	39.615893
	+E/-W	2.7 ft	Easting:	2,444,316.40 usft	Longitude:	-108.145680
Position Uncertainty		0.0 ft	Wellhead Elevation:	0.0 ft	Ground Level:	6,429.0 ft

<b>Wellbore</b>	Wellbore #1				
<b>Magnetics</b>	<b>Model Name</b>	<b>Sample Date</b>	<b>Declination (°)</b>	<b>Dip Angle (°)</b>	<b>Field Strength (nT)</b>
	HDGM	6/15/2018	9.58	65.82	51,466

<b>Design</b>	Plan #2 (6-14-18)			
<b>Audit Notes:</b>				
<b>Version:</b>	<b>Phase:</b>	PROTOTYPE	<b>Tie On Depth:</b>	0.0
<b>Vertical Section:</b>	<b>Depth From (TVD)</b>	<b>+N/-S</b>	<b>+E/-W</b>	<b>Direction</b>
	(ft)	(ft)	(ft)	(°)
	0.0	0.0	0.0	245.72

<b>Plan Sections</b>										
Measured Depth (ft)	Inclination (°)	Azimuth (°)	Vertical Depth (ft)	+N/-S (ft)	+E/-W (ft)	Dogleg Rate (°/100usft)	Build Rate (°/100usft)	Turn Rate (°/100usft)	TFO (°)	Target
0.0	0.00	0.00	0.0	0.0	0.0	0.00	0.00	0.00	0.00	
300.0	0.00	0.00	300.0	0.0	0.0	0.00	0.00	0.00	0.00	
670.7	11.12	244.97	668.3	-15.2	-32.5	3.00	3.00	0.00	244.97	
5,592.4	11.12	244.97	5,497.7	-416.8	-892.5	0.00	0.00	0.00	0.00	
5,963.0	0.00	0.00	5,866.0	-432.0	-925.0	3.00	-3.00	0.00	180.00	
6,299.9	3.37	250.00	6,202.7	-435.4	-934.3	1.00	1.00	-32.65	250.00	
9,210.3	3.37	250.00	9,108.0	-493.9	-1,095.0	0.00	0.00	0.00	0.00	BHL (23C-15)

Database:	US_EDM	Local Co-ordinate Reference:	Well NPR 23C-15 596
Company:	Caerus Oil and Gas LLC	TVD Reference:	WELL @ 6453.0ft (Original Well Elev)
Project:	SEC.15-T5S-R96W	MD Reference:	WELL @ 6453.0ft (Original Well Elev)
Site:	NPR H15 596 North Pad Sec.15-T5S-R96W	North Reference:	True
Well:	NPR 23C-15 596	Survey Calculation Method:	Minimum Curvature
Wellbore:	Wellbore #1		
Design:	Plan #2 (6-14-18)		

Planned Survey									
Measured Depth (ft)	Inclination (°)	Azimuth (°)	Vertical Depth (ft)	+N/-S (ft)	+E/-W (ft)	Vertical Section (ft)	Dogleg Rate (°/100usft)	Build Rate (°/100usft)	Turn Rate (°/100usft)
0.0	0.00	0.00	0.0	0.0	0.0	0.0	0.00	0.00	0.00
1.0	0.00	0.00	1.0	0.0	0.0	0.0	0.00	0.00	0.00
SHL 2355'FNL, 68'FEL, SEC.15									
100.0	0.00	0.00	100.0	0.0	0.0	0.0	0.00	0.00	0.00
200.0	0.00	0.00	200.0	0.0	0.0	0.0	0.00	0.00	0.00
300.0	0.00	0.00	300.0	0.0	0.0	0.0	0.00	0.00	0.00
400.0	3.00	244.97	400.0	-1.1	-2.4	2.6	3.00	3.00	0.00
500.0	6.00	244.97	499.6	-4.4	-9.5	10.5	3.00	3.00	0.00
600.0	9.00	244.97	598.8	-9.9	-21.3	23.5	3.00	3.00	0.00
670.7	11.12	244.97	668.3	-15.2	-32.5	35.9	3.00	3.00	0.00
700.0	11.12	244.97	697.1	-17.6	-37.6	41.5	0.00	0.00	0.00
800.0	11.12	244.97	795.2	-25.7	-55.1	60.8	0.00	0.00	0.00
900.0	11.12	244.97	893.4	-33.9	-72.6	80.1	0.00	0.00	0.00
930.2	11.12	244.97	923.0	-36.4	-77.8	85.9	0.00	0.00	0.00
WASATCH.NPC									
1,000.0	11.12	244.97	991.5	-42.0	-90.0	99.4	0.00	0.00	0.00
1,100.0	11.12	244.97	1,089.6	-50.2	-107.5	118.6	0.00	0.00	0.00
1,200.0	11.12	244.97	1,187.7	-58.4	-125.0	137.9	0.00	0.00	0.00
1,300.0	11.12	244.97	1,285.9	-66.5	-142.5	157.2	0.00	0.00	0.00
1,400.0	11.12	244.97	1,384.0	-74.7	-159.9	176.5	0.00	0.00	0.00
1,500.0	11.12	244.97	1,482.1	-82.9	-177.4	195.8	0.00	0.00	0.00
1,600.0	11.12	244.97	1,580.2	-91.0	-194.9	215.1	0.00	0.00	0.00
1,700.0	11.12	244.97	1,678.4	-99.2	-212.4	234.4	0.00	0.00	0.00
1,800.0	11.12	244.97	1,776.5	-107.3	-229.8	253.6	0.00	0.00	0.00
1,900.0	11.12	244.97	1,874.6	-115.5	-247.3	272.9	0.00	0.00	0.00
2,000.0	11.12	244.97	1,972.7	-123.7	-264.8	292.2	0.00	0.00	0.00
2,100.0	11.12	244.97	2,070.8	-131.8	-282.3	311.5	0.00	0.00	0.00
2,200.0	11.12	244.97	2,169.0	-140.0	-299.7	330.8	0.00	0.00	0.00
2,300.0	11.12	244.97	2,267.1	-148.1	-317.2	350.1	0.00	0.00	0.00
2,400.0	11.12	244.97	2,365.2	-156.3	-334.7	369.3	0.00	0.00	0.00
2,500.0	11.12	244.97	2,463.3	-164.5	-352.1	388.6	0.00	0.00	0.00
2,537.4	11.12	244.97	2,500.0	-167.5	-358.7	395.8	0.00	0.00	0.00
9 5/8"									
2,600.0	11.12	244.97	2,561.5	-172.6	-369.6	407.9	0.00	0.00	0.00
2,700.0	11.12	244.97	2,659.6	-180.8	-387.1	427.2	0.00	0.00	0.00
2,800.0	11.12	244.97	2,757.7	-188.9	-404.6	446.5	0.00	0.00	0.00
2,900.0	11.12	244.97	2,855.8	-197.1	-422.0	465.8	0.00	0.00	0.00
3,000.0	11.12	244.97	2,953.9	-205.3	-439.5	485.0	0.00	0.00	0.00
3,100.0	11.12	244.97	3,052.1	-213.4	-457.0	504.3	0.00	0.00	0.00
3,200.0	11.12	244.97	3,150.2	-221.6	-474.5	523.6	0.00	0.00	0.00
3,300.0	11.12	244.97	3,248.3	-229.7	-491.9	542.9	0.00	0.00	0.00
3,376.1	11.12	244.97	3,323.0	-236.0	-505.2	557.6	0.00	0.00	0.00
WASATCH_G.NPC									
3,400.0	11.12	244.97	3,346.4	-237.9	-509.4	562.2	0.00	0.00	0.00
3,500.0	11.12	244.97	3,444.6	-246.1	-526.9	581.5	0.00	0.00	0.00
3,600.0	11.12	244.97	3,542.7	-254.2	-544.4	600.8	0.00	0.00	0.00
3,700.0	11.12	244.97	3,640.8	-262.4	-561.8	620.0	0.00	0.00	0.00
3,800.0	11.12	244.97	3,738.9	-270.6	-579.3	639.3	0.00	0.00	0.00
3,841.9	11.12	244.97	3,780.0	-274.0	-586.6	647.4	0.00	0.00	0.00
FORT_UNION.NPC									
3,900.0	11.12	244.97	3,837.1	-278.7	-596.8	658.6	0.00	0.00	0.00
4,000.0	11.12	244.97	3,935.2	-286.9	-614.3	677.9	0.00	0.00	0.00
4,100.0	11.12	244.97	4,033.3	-295.0	-631.7	697.2	0.00	0.00	0.00
4,200.0	11.12	244.97	4,131.4	-303.2	-649.2	716.5	0.00	0.00	0.00

<b>Database:</b>	US_EDM	<b>Local Co-ordinate Reference:</b>	Well NPR 23C-15 596
<b>Company:</b>	Caerus Oil and Gas LLC	<b>TVD Reference:</b>	WELL @ 6453.0ft (Original Well Elev)
<b>Project:</b>	SEC.15-T5S-R96W	<b>MD Reference:</b>	WELL @ 6453.0ft (Original Well Elev)
<b>Site:</b>	NPR H15 596 North Pad Sec.15-T5S-R96W	<b>North Reference:</b>	True
<b>Well:</b>	NPR 23C-15 596	<b>Survey Calculation Method:</b>	Minimum Curvature
<b>Wellbore:</b>	Wellbore #1		
<b>Design:</b>	Plan #2 (6-14-18)		

Planned Survey									
Measured Depth (ft)	Inclination (°)	Azimuth (°)	Vertical Depth (ft)	+N/-S (ft)	+E/-W (ft)	Vertical Section (ft)	Dogleg Rate (°/100usft)	Build Rate (°/100usft)	Turn Rate (°/100usft)
4,300.0	11.12	244.97	4,229.5	-311.4	-666.7	735.7	0.00	0.00	0.00
4,400.0	11.12	244.97	4,327.7	-319.5	-684.2	755.0	0.00	0.00	0.00
4,500.0	11.12	244.97	4,425.8	-327.7	-701.6	774.3	0.00	0.00	0.00
4,600.0	11.12	244.97	4,523.9	-335.8	-719.1	793.6	0.00	0.00	0.00
4,700.0	11.12	244.97	4,622.0	-344.0	-736.6	812.9	0.00	0.00	0.00
4,800.0	11.12	244.97	4,720.2	-352.2	-754.1	832.2	0.00	0.00	0.00
4,900.0	11.12	244.97	4,818.3	-360.3	-771.5	851.4	0.00	0.00	0.00
5,000.0	11.12	244.97	4,916.4	-368.5	-789.0	870.7	0.00	0.00	0.00
5,100.0	11.12	244.97	5,014.5	-376.6	-806.5	890.0	0.00	0.00	0.00
5,200.0	11.12	244.97	5,112.6	-384.8	-823.9	909.3	0.00	0.00	0.00
5,300.0	11.12	244.97	5,210.8	-393.0	-841.4	928.6	0.00	0.00	0.00
5,400.0	11.12	244.97	5,308.9	-401.1	-858.9	947.9	0.00	0.00	0.00
5,500.0	11.12	244.97	5,407.0	-409.3	-876.4	967.1	0.00	0.00	0.00
5,592.4	11.12	244.97	5,497.7	-416.8	-892.5	985.0	0.00	0.00	0.00
5,600.0	10.89	244.97	5,505.1	-417.4	-893.8	986.4	3.00	-3.00	0.00
5,700.0	7.89	244.97	5,603.8	-424.3	-908.6	1,002.7	3.00	-3.00	0.00
5,785.8	5.32	244.97	5,689.0	-428.5	-917.6	1,012.6	3.00	-3.00	0.00
OHIO_CREEK.MBL									
5,800.0	4.89	244.97	5,703.2	-429.1	-918.7	1,013.9	3.00	-3.00	0.00
5,900.0	1.89	244.97	5,803.0	-431.6	-924.1	1,019.8	3.00	-3.00	0.00
5,963.0	0.00	0.00	5,866.0	-432.0	-925.0	1,020.8	3.00	-3.00	0.00
6,000.0	0.37	250.00	5,903.0	-432.0	-925.1	1,020.9	1.00	1.00	0.00
6,013.0	0.50	250.00	5,916.0	-432.1	-925.2	1,021.0	1.00	1.00	0.00
WILLIAMS_FORK.MBL									
6,063.0	1.00	250.00	5,966.0	-432.3	-925.8	1,021.7	1.00	1.00	0.00
TOP_GAS.MBL									
6,100.0	1.37	250.00	6,002.9	-432.6	-926.5	1,022.4	1.00	1.00	0.00
6,200.0	2.37	250.00	6,102.9	-433.7	-929.6	1,025.7	1.00	1.00	0.00
6,299.9	3.37	250.00	6,202.7	-435.4	-934.3	1,030.7	1.00	1.00	0.00
6,300.0	3.37	250.00	6,202.8	-435.4	-934.3	1,030.7	0.00	0.00	0.00
6,400.0	3.37	250.00	6,302.6	-437.4	-939.8	1,036.6	0.00	0.00	0.00
6,500.0	3.37	250.00	6,402.4	-439.4	-945.4	1,042.4	0.00	0.00	0.00
6,600.0	3.37	250.00	6,502.2	-441.4	-950.9	1,048.3	0.00	0.00	0.00
6,700.0	3.37	250.00	6,602.1	-443.4	-956.4	1,054.1	0.00	0.00	0.00
6,800.0	3.37	250.00	6,701.9	-445.4	-961.9	1,060.0	0.00	0.00	0.00
6,900.0	3.37	250.00	6,801.7	-447.4	-967.4	1,065.9	0.00	0.00	0.00
7,000.0	3.37	250.00	6,901.6	-449.5	-973.0	1,071.7	0.00	0.00	0.00
7,100.0	3.37	250.00	7,001.4	-451.5	-978.5	1,077.6	0.00	0.00	0.00
7,200.0	3.37	250.00	7,101.2	-453.5	-984.0	1,083.4	0.00	0.00	0.00
7,300.0	3.37	250.00	7,201.0	-455.5	-989.5	1,089.3	0.00	0.00	0.00
7,400.0	3.37	250.00	7,300.9	-457.5	-995.0	1,095.2	0.00	0.00	0.00
7,500.0	3.37	250.00	7,400.7	-459.5	-1,000.6	1,101.0	0.00	0.00	0.00
7,600.0	3.37	250.00	7,500.5	-461.5	-1,006.1	1,106.9	0.00	0.00	0.00
7,700.0	3.37	250.00	7,600.3	-463.5	-1,011.6	1,112.7	0.00	0.00	0.00
7,800.0	3.37	250.00	7,700.2	-465.5	-1,017.1	1,118.6	0.00	0.00	0.00
7,900.0	3.37	250.00	7,800.0	-467.5	-1,022.7	1,124.5	0.00	0.00	0.00
8,000.0	3.37	250.00	7,899.8	-469.5	-1,028.2	1,130.3	0.00	0.00	0.00
8,100.0	3.37	250.00	7,999.7	-471.6	-1,033.7	1,136.2	0.00	0.00	0.00
8,200.0	3.37	250.00	8,099.5	-473.6	-1,039.2	1,142.0	0.00	0.00	0.00
8,300.0	3.37	250.00	8,199.3	-475.6	-1,044.7	1,147.9	0.00	0.00	0.00
8,400.0	3.37	250.00	8,299.1	-477.6	-1,050.3	1,153.7	0.00	0.00	0.00
8,500.0	3.37	250.00	8,399.0	-479.6	-1,055.8	1,159.6	0.00	0.00	0.00
8,559.1	3.37	250.00	8,458.0	-480.8	-1,059.1	1,163.1	0.00	0.00	0.00

Database:	US_EDM	Local Co-ordinate Reference:	Well NPR 23C-15 596
Company:	Caerus Oil and Gas LLC	TVD Reference:	WELL @ 6453.0ft (Original Well Elev)
Project:	SEC.15-T5S-R96W	MD Reference:	WELL @ 6453.0ft (Original Well Elev)
Site:	NPR H15 596 North Pad Sec.15-T5S-R96W	North Reference:	True
Well:	NPR 23C-15 596	Survey Calculation Method:	Minimum Curvature
Wellbore:	Wellbore #1		
Design:	Plan #2 (6-14-18)		

Planned Survey									
Measured Depth (ft)	Inclination (°)	Azimuth (°)	Vertical Depth (ft)	+N/-S (ft)	+E/-W (ft)	Vertical Section (ft)	Dogleg Rate (°/100usft)	Build Rate (°/100usft)	Turn Rate (°/100usft)
CAMEO.MBL									
8,600.0	3.37	250.00	8,498.8	-481.6	-1,061.3	1,165.5	0.00	0.00	0.00
8,700.0	3.37	250.00	8,598.6	-483.6	-1,066.8	1,171.3	0.00	0.00	0.00
8,800.0	3.37	250.00	8,698.4	-485.6	-1,072.4	1,177.2	0.00	0.00	0.00
8,900.0	3.37	250.00	8,798.3	-487.6	-1,077.9	1,183.0	0.00	0.00	0.00
9,000.0	3.37	250.00	8,898.1	-489.6	-1,083.4	1,188.9	0.00	0.00	0.00
9,060.0	3.37	250.00	8,958.0	-490.8	-1,086.7	1,192.4	0.00	0.00	0.00
ROLLINS.MBL									
9,100.0	3.37	250.00	8,997.9	-491.7	-1,088.9	1,194.8	0.00	0.00	0.00
9,200.0	3.37	250.00	9,097.8	-493.7	-1,094.4	1,200.6	0.00	0.00	0.00
9,210.3	3.37	250.00	9,108.0	-493.9	-1,095.0	1,201.2	0.00	0.00	0.00
TD.MBL - BHL (23C-15)									

Design Targets									
Target Name - hit/miss target - Shape	Dip Angle (°)	Dip Dir. (°)	TVD (ft)	+N/-S (ft)	+E/-W (ft)	Northing (usft)	Easting (usft)	Latitude	Longitude
SHL 2355'FNL, 68'FEL, - plan hits target center - Point	0.00	0.00	1.0	0.0	0.0	14,398,956.40	2,444,316.40	39.615893	-108.145680
BHL (23C-15) - plan hits target center - Ellipse (radii L200.0 W100.0 on 250.00 azi)	0.00	0.00	9,108.0	-493.9	-1,095.0	14,398,427.81	2,443,237.27	39.614537	-108.149566

Casing Points					
Measured Depth (ft)	Vertical Depth (ft)	Name	Casing Diameter (")	Hole Diameter (")	
2,537.4	2,500.0	9 5/8"	9-5/8	12-1/4	

Formations						
Measured Depth (ft)	Vertical Depth (ft)	Name	Lithology	Dip (°)	Dip Direction (°)	
930.2	923.0	WASATCH.NPC		0.00		
3,376.1	3,323.0	WASATCH_G.NPC		0.00		
3,841.9	3,780.0	FORT_UNION.NPC		0.00		
5,785.8	5,689.0	OHIO_CREEK.MBL		0.00		
6,013.0	5,916.0	WILLIAMS_FORK.MBL		0.00		
6,063.0	5,966.0	TOP_GAS.MBL		0.00		
8,559.1	8,458.0	CAMEO.MBL		0.00		
9,060.0	8,958.0	ROLLINS.MBL		0.00		
9,210.3	9,108.0	TD.MBL		0.00		



## **Caerus Oil and Gas LLC**

**SEC.15-T5S-R96W**

**NPR H15 596 North Pad Sec.15-T5S-R96W**

**NPR 23C-15 596**

**Wellbore #1**

**Plan #2 (6-14-18)**

## **Anticollision Report**

**15 June, 2018**

<b>Company:</b>	Caerus Oil and Gas LLC	<b>Local Co-ordinate Reference:</b>	Well NPR 23C-15 596
<b>Project:</b>	SEC.15-T5S-R96W	<b>TVD Reference:</b>	WELL @ 6453.0ft (Original Well Elev)
<b>Reference Site:</b>	NPR H15 596 North Pad Sec.15-T5S-R96W	<b>MD Reference:</b>	WELL @ 6453.0ft (Original Well Elev)
<b>Site Error:</b>	0.0 ft	<b>North Reference:</b>	True
<b>Reference Well:</b>	NPR 23C-15 596	<b>Survey Calculation Method:</b>	Minimum Curvature
<b>Well Error:</b>	0.0 ft	<b>Output errors are at</b>	2.00 sigma
<b>Reference Wellbore</b>	Wellbore #1	<b>Database:</b>	US_EDM
<b>Reference Design:</b>	Plan #2 (6-14-18)	<b>Offset TVD Reference:</b>	Offset Datum

<b>Reference</b>	Plan #2 (6-14-18)		
<b>Filter type:</b>	NO GLOBAL FILTER: Using user defined selection & filtering criteria		
<b>Interpolation Method:</b>	Stations	<b>Error Model:</b>	ISCWSA
<b>Depth Range:</b>	Unlimited	<b>Scan Method:</b>	Closest Approach 3D
<b>Results Limited by:</b>	Maximum center-center distance of 800.0 ft	<b>Error Surface:</b>	Elliptical Conic
<b>Warning Levels Evaluated at:</b>	2.00 Sigma	<b>Casing Method:</b>	Not applied

Survey Tool Program		Date	6/15/2018		
From (ft)	To (ft)	Survey (Wellbore)	Tool Name	Description	
0.0	9,210.3	Plan #2 (6-14-18) (Wellbore #1)	MWD	MWD - Standard	

Summary						
Site Name	Reference Measured Depth (ft)	Offset Measured Depth (ft)	Distance Between Centres (ft)	Distance Between Ellipses (ft)	Separation Factor	Warning
Offset Well - Wellbore - Design						
Existing Wells Sec.14-T5S-R96W						
N. Parachute WF05D M14 596 (Exist) - Wellbore #1 - We						Out of range
N. Parachute WF09D M14 596 (Exist - TA) - Wellbore #1						Out of range
N. Parachute WF10D M14 596 (Exist - IJ) - Wellbore #1						Out of range
N. Parachute WF12D M14 596 (Exist) - Wellbore #1 - We						Out of range
Existing Wells Sec.15-T5S-R96W						
N. Parachute WF02B A15 596 (P&A) - Wellbore #1 - We						Out of range
N. Parachute WF03D A15 596 (P&A) - Wellbore #1 - We						Out of range
N. Parachute WF14D A15 596 (Exist) - Wellbore #1 - We						Out of range
NPR H15 596 North Pad Sec.15-T5S-R96W						
NPR 12B-14 596 - Wellbore #1 - Plan #1 (12-01-17)	200.0	200.0	31.6	31.0	46.903	CC, ES
NPR 12B-14 596 - Wellbore #1 - Plan #1 (12-01-17)	400.0	397.6	38.8	37.3	24.353	SF
NPR 12C-14 596 - Wellbore #1 - Plan #1 (12-01-17)	300.0	300.0	24.6	23.5	21.912	CC, ES
NPR 12C-14 596 - Wellbore #1 - Plan #1 (12-01-17)	400.0	399.2	27.2	25.6	17.355	SF
NPR 12D-14 596 - Wellbore #1 - Plan #1 (12-01-17)	300.0	300.0	18.0	16.9	16.041	CC, ES
NPR 12D-14 596 - Wellbore #1 - Plan #1 (12-01-17)	400.0	400.0	19.7	18.1	12.478	SF
NPR 13B-14 596 - Wellbore #1 - Plan #2 (6-14-18)	300.0	300.0	12.5	11.4	11.122	CC, ES
NPR 13B-14 596 - Wellbore #1 - Plan #2 (6-14-18)	400.0	400.0	14.7	13.1	9.268	SF
NPR 13C-14 596 - Wellbore #1 - Plan #2 (6-14-18)	300.0	300.0	10.0	8.9	8.884	CC, ES
NPR 13C-14 596 - Wellbore #1 - Plan #2 (6-14-18)	400.0	400.0	12.6	11.0	7.892	SF
NPR 13D-14 596 - Wellbore #1 - Plan #2 (6-14-18)	200.0	200.0	12.5	11.8	18.466	CC, ES
NPR 13D-14 596 - Wellbore #1 - Plan #2 (6-14-18)	300.0	299.3	15.0	13.9	13.446	SF
NPR 14A-14 596 - Wellbore #1 - Plan #2 (6-14-18)	200.0	200.0	18.0	17.4	26.732	CC, ES
NPR 14A-14 596 - Wellbore #1 - Plan #2 (6-14-18)	300.0	299.0	20.6	19.5	18.607	SF
NPR 22C-15 596 - Wellbore #1 - Plan #1 (12-01-17)	200.0	200.0	30.0	29.3	44.499	CC, ES
NPR 22C-15 596 - Wellbore #1 - Plan #1 (12-01-17)	500.0	494.8	47.9	45.8	23.345	SF
NPR 22D-15 596 - Wellbore #1 - Plan #1 (12-01-17)	300.0	300.0	22.5	21.4	20.022	CC, ES
NPR 22D-15 596 - Wellbore #1 - Plan #1 (12-01-17)	500.0	498.3	29.5	27.5	14.694	SF
NPR 23A-15 596 - Wellbore #1 - Plan #1 (12-01-17)	300.0	300.0	15.0	13.9	13.355	CC
NPR 23A-15 596 - Wellbore #1 - Plan #1 (12-01-17)	400.0	400.0	15.3	13.7	9.817	ES
NPR 23A-15 596 - Wellbore #1 - Plan #1 (12-01-17)	500.0	499.6	18.5	16.5	9.177	SF
NPR 23B-15 596 - Wellbore #1 - Plan #1 (12-01-17)	200.0	200.0	7.5	6.8	11.129	CC, ES
NPR 23B-15 596 - Wellbore #1 - Plan #1 (12-01-17)	300.0	299.8	8.7	7.6	7.819	SF
NPR 23D-15 596 - Wellbore #1 - Plan #1 (12-01-17)	331.8	331.8	7.5	6.2	5.945	CC, ES
NPR 23D-15 596 - Wellbore #1 - Plan #1 (12-01-17)	1,200.0	1,201.9	23.1	15.8	3.163	SF
NPR 24A-15 596 - Wellbore #1 - Plan #2 (6-14-18)	200.0	200.0	15.0	14.3	22.241	CC, ES

CC - Min centre to center distance or convergent point. SF - min separation factor. ES - min ellipse separation



<b>Company:</b>	Caerus Oil and Gas LLC	<b>Local Co-ordinate Reference:</b>	Well NPR 23C-15 596
<b>Project:</b>	SEC.15-T5S-R96W	<b>TVD Reference:</b>	WELL @ 6453.0ft (Original Well Elev)
<b>Reference Site:</b>	NPR H15 596 North Pad Sec.15-T5S-R96W	<b>MD Reference:</b>	WELL @ 6453.0ft (Original Well Elev)
<b>Site Error:</b>	0.0 ft	<b>North Reference:</b>	True
<b>Reference Well:</b>	NPR 23C-15 596	<b>Survey Calculation Method:</b>	Minimum Curvature
<b>Well Error:</b>	0.0 ft	<b>Output errors are at</b>	2.00 sigma
<b>Reference Wellbore</b>	Wellbore #1	<b>Database:</b>	US_EDM
<b>Reference Design:</b>	Plan #2 (6-14-18)	<b>Offset TVD Reference:</b>	Offset Datum

## Summary

Site Name	Reference	Offset	Distance		Separation	Warning
	Measured Depth (ft)	Measured Depth (ft)	Between Centres (ft)	Between Ellipses (ft)		
Offset Well - Wellbore - Design						
NPR H15 596 North Pad Sec.15-T5S-R96W						
NPR 24A-15 596 - Wellbore #1 - Plan #2 (6-14-18)	300.0	299.2	17.3	16.2	15.593	SF
NPR H15 596 South Pad Sec.15-T5S-R96W						
NPR 11A-14 596 - Wellbore #1 - Plan #1 (11-30-17)	300.0	300.0	293.8	292.7	261.429	CC
NPR 11A-14 596 - Wellbore #1 - Plan #1 (11-30-17)	400.0	400.0	294.0	292.4	188.731	ES
NPR 11A-14 596 - Wellbore #1 - Plan #1 (11-30-17)	1,300.0	1,156.7	461.7	455.1	70.051	SF
NPR 11B-14 596 - Wellbore #1 - Plan #1 (11-30-17)	200.0	200.0	286.4	285.7	424.693	CC, ES
NPR 11B-14 596 - Wellbore #1 - Plan #1 (11-30-17)	1,100.0	951.7	463.0	457.2	80.047	SF
NPR 11C-14 596 - Wellbore #1 - Plan #1 (11-30-17)	300.0	300.0	278.8	277.7	248.064	CC, ES
NPR 11C-14 596 - Wellbore #1 - Plan #1 (11-30-17)	1,200.0	1,050.8	463.2	456.9	73.949	SF
NPR 11D-14 596 - Wellbore #1 - Plan #1 (11-30-17)	300.0	300.0	271.3	270.2	241.440	CC
NPR 11D-14 596 - Wellbore #1 - Plan #1 (11-30-17)	400.0	400.0	271.5	270.0	174.312	ES
NPR 11D-14 596 - Wellbore #1 - Plan #1 (11-30-17)	1,200.0	1,080.2	420.1	413.9	68.059	SF
NPR 12A-14 596 - Wellbore #1 - Plan #1 (11-30-17)	300.0	300.0	263.9	262.7	234.786	CC
NPR 12A-14 596 - Wellbore #1 - Plan #1 (11-30-17)	400.0	400.0	264.0	262.5	169.512	ES
NPR 12A-14 596 - Wellbore #1 - Plan #1 (11-30-17)	1,200.0	1,107.1	381.2	375.2	62.637	SF
NPR 15B-11 596 - Wellbore #1 - Plan #1 (11-30-17)	200.0	200.0	316.3	315.6	469.087	CC, ES
NPR 15B-11 596 - Wellbore #1 - Plan #1 (11-30-17)	1,200.0	1,000.0	545.3	539.1	87.382	SF
NPR 15C-11 596 - Wellbore #1 - Plan #1 (11-30-17)	300.0	300.0	308.8	307.7	274.778	CC, ES
NPR 15C-11 596 - Wellbore #1 - Plan #1 (11-30-17)	1,200.0	1,031.0	500.7	494.5	81.289	SF
NPR 15D-11 596 - Wellbore #1 - Plan #1 (11-30-17)	300.0	300.0	301.3	300.2	268.084	CC
NPR 15D-11 596 - Wellbore #1 - Plan #1 (11-30-17)	400.0	400.0	301.5	299.9	193.532	ES
NPR 15D-11 596 - Wellbore #1 - Plan #1 (11-30-17)	1,200.0	1,058.9	459.6	453.5	75.491	SF
NPR 21A-15 596 - Wellbore #1 - Plan #1 (11-30-17)	300.0	300.0	301.1	300.0	267.959	CC
NPR 21A-15 596 - Wellbore #1 - Plan #1 (11-30-17)	400.0	400.0	301.2	299.7	193.408	ES
NPR 21A-15 596 - Wellbore #1 - Plan #1 (11-30-17)	1,900.0	1,624.5	774.4	763.3	69.575	SF
NPR 21B-15 596 - Wellbore #1 - Plan #1 (11-30-17)	300.0	300.0	293.7	292.5	261.301	CC
NPR 21B-15 596 - Wellbore #1 - Plan #1 (11-30-17)	500.0	499.6	294.1	292.1	146.874	ES
NPR 21B-15 596 - Wellbore #1 - Plan #1 (11-30-17)	2,100.0	1,851.6	794.1	781.4	62.346	SF
NPR 21C-15 596 - Wellbore #1 - Plan #1 (11-30-17)	200.0	200.0	286.1	285.5	424.356	CC, ES
NPR 21C-15 596 - Wellbore #1 - Plan #1 (11-30-17)	2,100.0	1,894.3	794.6	781.2	59.465	SF
NPR 21D-15 596 - Wellbore #1 - Plan #1 (11-30-17)	300.0	300.0	278.6	277.5	247.916	CC, ES
NPR 21D-15 596 - Wellbore #1 - Plan #1 (11-30-17)	2,300.0	2,126.7	776.9	761.8	51.701	SF
NPR 22A-15 596 - Wellbore #1 - Plan #1 (11-30-17)	300.0	300.0	271.2	270.1	241.308	CC
NPR 22A-15 596 - Wellbore #1 - Plan #1 (11-30-17)	400.0	400.0	271.3	269.7	174.179	ES
NPR 22A-15 596 - Wellbore #1 - Plan #1 (11-30-17)	2,600.0	2,441.8	789.7	771.1	42.522	SF
NPR 22B-10 596 - Wellbore #1 - Plan #1 (11-30-17)	300.0	300.0	263.3	262.1	234.264	CC
NPR 22B-10 596 - Wellbore #1 - Plan #1 (11-30-17)	500.0	499.6	263.8	261.8	131.711	ES
NPR 22B-10 596 - Wellbore #1 - Plan #1 (11-30-17)	3,000.0	2,870.1	790.5	768.2	35.298	SF
NPR 25C-10 596 - Wellbore #1 - Plan #1 (11-30-17)	200.0	200.0	316.2	315.5	468.905	CC, ES
NPR 25C-10 596 - Wellbore #1 - Plan #1 (11-30-17)	1,600.0	1,273.9	754.5	745.8	86.356	SF
NPR 25D-10 596 - Wellbore #1 - Plan #1 (11-30-17)	300.0	300.0	308.6	307.5	274.636	CC, ES
NPR 25D-10 596 - Wellbore #1 - Plan #1 (11-30-17)	1,800.0	1,488.9	791.5	781.2	76.629	SF

NPR H15 596 North Pad Sec.15-T5S-R96W - NPR 12B-14 596 - Wellbore #1 - Plan #1 (12-01-17)													Offset Site Error:	0.0 ft
Survey Program:		0-MWD										Offset Well Error:		0.0 ft
Reference		Offset		Semi Major Axis			Distance					Warning		
Measured Depth	Vertical Depth	Measured Depth	Vertical Depth	Reference	Offset	Highside Toolface	Offset Wellbore Centre		Between Centres	Between Ellipses	Minimum Separation		Separation Factor	
(ft)	(ft)	(ft)	(ft)	(ft)	(ft)	(°)	+N/-S (ft)	+E/-W (ft)	(ft)	(ft)	(ft)			
0.0	0.0	0.0	0.0	0.0	0.0	-4.96	31.5	-2.7	31.6					
100.0	100.0	100.0	100.0	0.1	0.1	-4.96	31.5	-2.7	31.6	31.4	0.22	140.708		

CC - Min centre to center distance or convergent point, SF - min separation factor, ES - min ellipse separation

<b>Company:</b>	Caerus Oil and Gas LLC	<b>Local Co-ordinate Reference:</b>	Well NPR 23C-15 596
<b>Project:</b>	SEC.15-T5S-R96W	<b>TVD Reference:</b>	WELL @ 6453.0ft (Original Well Elev)
<b>Reference Site:</b>	NPR H15 596 North Pad Sec.15-T5S-R96W	<b>MD Reference:</b>	WELL @ 6453.0ft (Original Well Elev)
<b>Site Error:</b>	0.0 ft	<b>North Reference:</b>	True
<b>Reference Well:</b>	NPR 23C-15 596	<b>Survey Calculation Method:</b>	Minimum Curvature
<b>Well Error:</b>	0.0 ft	<b>Output errors are at</b>	2.00 sigma
<b>Reference Wellbore</b>	Wellbore #1	<b>Database:</b>	US_EDM
<b>Reference Design:</b>	Plan #2 (6-14-18)	<b>Offset TVD Reference:</b>	Offset Datum

Offset Design													Offset Site Error:	0.0 ft
Survey Program: 0-MWD													Offset Well Error:	0.0 ft
Reference		Offset		Semi Major Axis			Distance						Warning	
Measured Depth (ft)	Vertical Depth (ft)	Measured Depth (ft)	Vertical Depth (ft)	Reference (ft)	Offset (ft)	Highside Toolface (°)	Offset Wellbore Centre +N/-S (ft)	+E/-W (ft)	Between Centres (ft)	Between Ellipses (ft)	Minimum Separation (ft)	Separation Factor		
200.0	200.0	200.0	200.0	0.3	0.3	-4.96	31.5	-2.7	31.6	31.0	0.67	46.903 CC, ES		
300.0	300.0	299.2	299.2	0.6	0.6	-0.90	32.8	-0.5	32.8	31.7	1.12	29.340		
400.0	400.0	397.6	397.2	0.8	0.8	127.37	36.7	6.0	38.8	37.3	1.60	24.353 SF		
500.0	499.6	493.6	492.4	1.0	1.1	143.24	43.0	16.6	54.6	52.5	2.15	25.407		
600.0	598.8	585.8	583.2	1.3	1.4	154.31	51.3	30.7	81.8	79.1	2.74	29.867		
670.7	668.3	648.1	644.0	1.5	1.7	159.30	58.2	42.3	107.5	104.4	3.15	34.104		
700.0	697.1	673.3	668.4	1.6	1.8	160.98	61.3	47.4	119.5	116.2	3.29	36.365		
800.0	795.2	756.7	748.8	2.0	2.2	164.96	72.6	66.5	163.2	159.4	3.73	43.706		
900.0	893.4	837.7	825.9	2.4	2.6	167.39	85.3	88.0	211.0	206.8	4.20	50.297		
1,000.0	991.5	922.7	906.2	2.8	3.2	169.08	99.5	111.9	261.0	256.4	4.63	56.390		
1,100.0	1,089.6	1,009.1	987.8	3.2	3.7	170.25	114.0	136.3	311.1	306.0	5.06	61.441		
1,200.0	1,187.7	1,095.5	1,069.5	3.7	4.3	171.09	128.4	160.6	361.2	355.7	5.51	65.537		
1,300.0	1,285.9	1,181.9	1,151.1	4.1	4.9	171.73	142.9	185.0	411.4	405.4	5.97	68.876		
1,400.0	1,384.0	1,268.3	1,232.8	4.5	5.4	172.23	157.3	209.4	461.6	455.2	6.43	71.761		
1,500.0	1,482.1	1,354.7	1,314.4	5.0	6.0	172.63	171.8	233.7	511.8	504.9	6.90	74.169		
1,600.0	1,580.2	1,441.2	1,396.0	5.4	6.6	172.96	186.2	258.1	562.1	554.7	7.37	76.223		
1,700.0	1,678.4	1,527.6	1,477.7	5.8	7.2	173.24	200.7	282.4	612.4	604.5	7.85	77.991		
1,800.0	1,776.5	1,614.0	1,559.3	6.2	7.7	173.47	215.1	306.8	662.6	654.3	8.33	79.526		
1,900.0	1,874.6	1,700.4	1,641.0	6.7	8.3	173.68	229.6	331.1	712.9	704.1	8.82	80.868		
2,000.0	1,972.7	1,786.8	1,722.6	7.1	8.9	173.85	244.0	355.5	763.2	753.9	9.30	82.047		

<b>Company:</b>	Caerus Oil and Gas LLC	<b>Local Co-ordinate Reference:</b>	Well NPR 23C-15 596
<b>Project:</b>	SEC.15-T5S-R96W	<b>TVD Reference:</b>	WELL @ 6453.0ft (Original Well Elev)
<b>Reference Site:</b>	NPR H15 596 North Pad Sec.15-T5S-R96W	<b>MD Reference:</b>	WELL @ 6453.0ft (Original Well Elev)
<b>Site Error:</b>	0.0 ft	<b>North Reference:</b>	True
<b>Reference Well:</b>	NPR 23C-15 596	<b>Survey Calculation Method:</b>	Minimum Curvature
<b>Well Error:</b>	0.0 ft	<b>Output errors are at</b>	2.00 sigma
<b>Reference Wellbore</b>	Wellbore #1	<b>Database:</b>	US_EDM
<b>Reference Design:</b>	Plan #2 (6-14-18)	<b>Offset TVD Reference:</b>	Offset Datum

Offset Design													Offset Site Error:	0.0 ft
Survey Program: 0-MWD													Offset Well Error:	0.0 ft
Reference		Offset		Semi Major Axis			Distance							Warning
Measured Depth (ft)	Vertical Depth (ft)	Measured Depth (ft)	Vertical Depth (ft)	Reference (ft)	Offset (ft)	Highside Toolface (°)	Offset Wellbore Centre +N/-S (ft)	+E/-W (ft)	Between Centres (ft)	Between Ellipses (ft)	Minimum Separation (ft)	Separation Factor		
0.0	0.0	0.0	0.0	0.0	0.0	0.59	24.6	0.3	24.6					
100.0	100.0	100.0	100.0	0.1	0.1	0.59	24.6	0.3	24.6	24.4	0.22	109.558		
200.0	200.0	200.0	200.0	0.3	0.3	0.59	24.6	0.3	24.6	24.0	0.67	36.519		
300.0	300.0	300.0	300.0	0.6	0.6	0.59	24.6	0.3	24.6	23.5	1.12	21.912 CC, ES		
400.0	400.0	399.2	399.2	0.8	0.8	125.51	25.6	2.6	27.2	25.6	1.57	17.355 SF		
500.0	499.6	496.8	496.5	1.0	1.0	144.58	28.6	9.6	38.3	36.2	2.09	18.271		
600.0	598.8	591.4	590.2	1.3	1.3	158.44	33.3	20.7	60.9	58.2	2.68	22.720		
670.7	668.3	655.6	653.5	1.5	1.5	164.32	37.6	30.6	83.6	80.5	3.09	27.020		
700.0	697.1	681.6	679.0	1.6	1.6	166.16	39.5	35.2	94.3	91.1	3.22	29.262		
800.0	795.2	768.0	763.3	2.0	1.9	170.39	47.0	52.7	133.9	130.3	3.66	36.546		
900.0	893.4	850.9	843.3	2.4	2.3	172.89	55.6	72.8	177.9	173.8	4.11	43.320		
1,000.0	991.5	933.0	921.6	2.8	2.8	174.55	65.4	95.7	225.7	221.1	4.55	49.598		
1,100.0	1,089.6	1,020.2	1,004.4	3.2	3.3	175.74	76.0	120.7	274.4	269.4	5.00	54.897		
1,200.0	1,187.7	1,107.5	1,087.3	3.7	3.8	176.57	86.7	145.7	323.2	317.7	5.44	59.432		
1,300.0	1,285.9	1,194.7	1,170.2	4.1	4.4	177.18	97.4	170.8	372.0	366.1	5.89	63.146		
1,400.0	1,384.0	1,281.9	1,253.0	4.5	4.9	177.65	108.1	195.8	420.8	414.5	6.35	66.242		
1,500.0	1,482.1	1,369.1	1,335.9	5.0	5.5	178.02	118.8	220.8	469.7	462.9	6.82	68.902		
1,600.0	1,580.2	1,456.3	1,418.7	5.4	6.0	178.32	129.4	245.8	518.6	511.3	7.29	71.164		
1,700.0	1,678.4	1,543.5	1,501.6	5.8	6.6	178.57	140.1	270.9	567.4	559.7	7.76	73.113		
1,800.0	1,776.5	1,630.7	1,584.5	6.2	7.1	178.78	150.8	295.9	616.3	608.1	8.24	74.806		
1,900.0	1,874.6	1,718.0	1,667.3	6.7	7.7	178.96	161.5	320.9	665.2	656.5	8.72	76.288		
2,000.0	1,972.7	1,805.2	1,750.2	7.1	8.3	179.12	172.1	345.9	714.1	704.9	9.20	77.594		
2,100.0	2,070.8	1,892.4	1,833.0	7.6	8.8	179.25	182.8	370.9	763.0	753.3	9.69	78.752		

<b>Company:</b>	Caerus Oil and Gas LLC	<b>Local Co-ordinate Reference:</b>	Well NPR 23C-15 596
<b>Project:</b>	SEC.15-T5S-R96W	<b>TVD Reference:</b>	WELL @ 6453.0ft (Original Well Elev)
<b>Reference Site:</b>	NPR H15 596 North Pad Sec.15-T5S-R96W	<b>MD Reference:</b>	WELL @ 6453.0ft (Original Well Elev)
<b>Site Error:</b>	0.0 ft	<b>North Reference:</b>	True
<b>Reference Well:</b>	NPR 23C-15 596	<b>Survey Calculation Method:</b>	Minimum Curvature
<b>Well Error:</b>	0.0 ft	<b>Output errors are at</b>	2.00 sigma
<b>Reference Wellbore</b>	Wellbore #1	<b>Database:</b>	US_EDM
<b>Reference Design:</b>	Plan #2 (6-14-18)	<b>Offset TVD Reference:</b>	Offset Datum

NPR H15 596 North Pad Sec.15-T5S-R96W - NPR 12D-14 596 - Wellbore #1 - Plan #1 (12-01-17)													Offset Site Error:	0.0 ft
Survey Program:		0-MWD										Offset Well Error:		0.0 ft
Reference		Offset		Semi Major Axis			Distance						Warning	
Measured Depth	Vertical Depth	Measured Depth	Vertical Depth	Reference	Offset	Highside Toolface	Offset Wellbore Centre		Between Centres	Between Ellipses	Minimum Separation	Separation Factor		
(ft)	(ft)	(ft)	(ft)	(ft)	(ft)	(°)	+N/-S (ft)	+E/-W (ft)	(ft)	(ft)	(ft)			
0.0	0.0	0.0	0.0	0.0	0.0	10.26	17.7	3.2	18.0	18.0	0.00	N/A		
100.0	100.0	100.0	100.0	0.1	0.1	10.26	17.7	3.2	18.0	17.8	0.22	80.206		
200.0	200.0	200.0	200.0	0.3	0.3	10.26	17.7	3.2	18.0	17.4	0.67	26.735		
300.0	300.0	300.0	300.0	0.6	0.6	10.26	17.7	3.2	18.0	16.9	1.12	16.041	CC, ES	
400.0	400.0	400.0	400.0	0.8	0.8	131.50	17.7	3.2	19.7	18.1	1.58	12.478	SF	
500.0	499.6	498.6	498.6	1.0	1.0	148.38	18.4	5.7	27.4	25.3	2.07	13.208		
600.0	598.8	594.9	594.6	1.3	1.2	163.11	20.2	12.8	45.8	43.1	2.64	17.346		
670.7	668.3	660.8	660.0	1.5	1.4	169.33	22.2	20.4	65.3	62.3	3.04	21.479		
700.0	697.1	687.6	686.5	1.6	1.5	171.20	23.2	24.1	74.7	71.6	3.17	23.583		
800.0	795.2	776.8	774.4	2.0	1.8	175.50	27.1	39.1	110.0	106.3	3.61	30.475		
900.0	893.4	862.8	858.2	2.4	2.1	178.06	31.8	57.2	149.6	145.6	4.05	36.934		
1,000.0	991.5	945.3	937.9	2.8	2.5	179.77	37.2	78.0	193.4	188.9	4.50	42.981		
1,100.0	1,089.6	1,029.1	1,017.9	3.2	2.9	-178.97	43.5	102.1	240.5	235.6	4.96	48.477		
1,200.0	1,187.7	1,116.9	1,101.6	3.7	3.4	-178.05	50.2	127.8	288.2	282.8	5.40	53.359		
1,300.0	1,285.9	1,204.7	1,185.4	4.1	3.9	-177.39	56.8	153.4	336.0	330.1	5.85	57.398		
1,400.0	1,384.0	1,292.5	1,269.1	4.5	4.5	-176.90	63.5	179.1	383.7	377.4	6.32	60.755		
1,500.0	1,482.1	1,380.3	1,352.8	5.0	5.0	-176.51	70.2	204.7	431.5	424.7	6.78	63.598		
1,600.0	1,580.2	1,468.2	1,436.5	5.4	5.5	-176.21	76.9	230.4	479.3	472.0	7.26	66.040		
1,700.0	1,678.4	1,556.0	1,520.2	5.8	6.1	-175.95	83.5	256.1	527.1	519.3	7.74	68.139		
1,800.0	1,776.5	1,643.8	1,604.0	6.2	6.6	-175.74	90.2	281.7	574.9	566.6	8.22	69.962		
1,900.0	1,874.6	1,731.6	1,687.7	6.7	7.2	-175.57	96.9	307.4	622.7	614.0	8.70	71.556		
2,000.0	1,972.7	1,819.4	1,771.4	7.1	7.7	-175.41	103.6	333.0	670.5	661.3	9.19	72.961		
2,100.0	2,070.8	1,907.3	1,855.1	7.6	8.2	-175.28	110.2	358.7	718.3	708.6	9.68	74.206		
2,200.0	2,169.0	1,995.1	1,938.9	8.0	8.8	-175.17	116.9	384.3	766.1	755.9	10.17	75.316		

<b>Company:</b>	Caerus Oil and Gas LLC	<b>Local Co-ordinate Reference:</b>	Well NPR 23C-15 596
<b>Project:</b>	SEC.15-T5S-R96W	<b>TVD Reference:</b>	WELL @ 6453.0ft (Original Well Elev)
<b>Reference Site:</b>	NPR H15 596 North Pad Sec.15-T5S-R96W	<b>MD Reference:</b>	WELL @ 6453.0ft (Original Well Elev)
<b>Site Error:</b>	0.0 ft	<b>North Reference:</b>	True
<b>Reference Well:</b>	NPR 23C-15 596	<b>Survey Calculation Method:</b>	Minimum Curvature
<b>Well Error:</b>	0.0 ft	<b>Output errors are at</b>	2.00 sigma
<b>Reference Wellbore</b>	Wellbore #1	<b>Database:</b>	US_EDM
<b>Reference Design:</b>	Plan #2 (6-14-18)	<b>Offset TVD Reference:</b>	Offset Datum

Offset Design													Offset Site Error:		0.0 ft
Survey Program: 0-MWD													Offset Well Error:		0.0 ft
Reference		Offset		Semi Major Axis			Distance							Warning	
Measured Depth	Vertical Depth	Measured Depth	Vertical Depth	Reference	Offset	Highside Toolface	Offset Wellbore Centre		Between Centres	Between Ellipses	Minimum Separation	Separation Factor			
(ft)	(ft)	(ft)	(ft)	(ft)	(ft)	(°)	+N/-S (ft)	+E/-W (ft)	(ft)	(ft)	(ft)				
0.0	0.0	0.0	0.0	0.0	0.0	29.73	10.9	6.2	12.5	12.5	0.00	N/A			
100.0	100.0	100.0	100.0	0.1	0.1	29.73	10.9	6.2	12.5	12.3	0.22	55.612			
200.0	200.0	200.0	200.0	0.3	0.3	29.73	10.9	6.2	12.5	11.8	0.67	18.537			
300.0	300.0	300.0	300.0	0.6	0.6	29.73	10.9	6.2	12.5	11.4	1.12	11.122 CC, ES			
400.0	400.0	400.0	400.0	0.8	0.8	150.62	10.9	6.2	14.7	13.1	1.59	9.268 SF			
500.0	499.6	499.6	499.6	1.0	1.0	160.67	10.9	6.2	21.9	19.8	2.09	10.470			
600.0	598.8	597.3	597.3	1.3	1.2	170.24	10.7	8.7	36.5	33.8	2.62	13.927			
670.7	668.3	664.7	664.5	1.5	1.4	175.57	10.5	13.3	52.6	49.6	3.00	17.532			
700.0	697.1	692.2	691.9	1.6	1.4	177.30	10.4	15.8	60.6	57.5	3.13	19.379			
800.0	795.2	784.2	783.2	2.0	1.7	-178.29	9.9	27.3	90.6	87.0	3.56	25.451			
900.0	893.4	873.4	871.0	2.4	1.9	-175.25	9.2	42.5	124.9	120.9	4.01	31.177			
1,000.0	991.5	959.4	955.0	2.8	2.3	-172.98	8.4	61.1	163.5	159.0	4.47	36.582			
1,100.0	1,089.6	1,042.2	1,035.0	3.2	2.6	-171.21	7.4	82.6	206.0	201.1	4.94	41.700			
1,200.0	1,187.7	1,121.6	1,110.7	3.7	3.0	-169.78	6.4	106.4	252.3	246.9	5.42	46.568			
1,300.0	1,285.9	1,200.0	1,184.4	4.1	3.5	-168.57	5.2	132.9	302.1	296.2	5.91	51.159			
1,400.0	1,384.0	1,270.2	1,249.5	4.5	4.0	-167.62	4.0	159.2	355.2	348.8	6.38	55.656			
1,500.0	1,482.1	1,339.3	1,312.5	5.0	4.6	-166.78	2.7	187.5	411.4	404.5	6.86	59.995			
1,600.0	1,580.2	1,400.0	1,367.1	5.4	5.1	-166.12	1.6	214.2	470.4	463.1	7.33	64.211			
1,700.0	1,678.4	1,467.6	1,426.8	5.8	5.7	-165.44	0.1	245.9	532.1	524.3	7.82	68.009			
1,800.0	1,776.5	1,527.9	1,479.0	6.2	6.3	-164.88	-1.2	275.9	596.3	588.0	8.31	71.797			
1,900.0	1,874.6	1,603.6	1,544.0	6.7	7.2	-164.28	-2.9	314.5	661.5	652.7	8.81	75.070			
2,000.0	1,972.7	1,679.2	1,609.0	7.1	8.0	-163.79	-4.7	353.1	726.8	717.5	9.32	77.968			
2,100.0	2,070.8	1,754.8	1,674.0	7.6	8.8	-163.38	-6.4	391.7	792.1	782.3	9.84	80.536			

<b>Company:</b>	Caerus Oil and Gas LLC	<b>Local Co-ordinate Reference:</b>	Well NPR 23C-15 596
<b>Project:</b>	SEC.15-T5S-R96W	<b>TVD Reference:</b>	WELL @ 6453.0ft (Original Well Elev)
<b>Reference Site:</b>	NPR H15 596 North Pad Sec.15-T5S-R96W	<b>MD Reference:</b>	WELL @ 6453.0ft (Original Well Elev)
<b>Site Error:</b>	0.0 ft	<b>North Reference:</b>	True
<b>Reference Well:</b>	NPR 23C-15 596	<b>Survey Calculation Method:</b>	Minimum Curvature
<b>Well Error:</b>	0.0 ft	<b>Output errors are at</b>	2.00 sigma
<b>Reference Wellbore</b>	Wellbore #1	<b>Database:</b>	US_EDM
<b>Reference Design:</b>	Plan #2 (6-14-18)	<b>Offset TVD Reference:</b>	Offset Datum

Offset Design													Offset Site Error:		0.0 ft
Survey Program: 0-MWD													Offset Well Error:		0.0 ft
Reference		Offset		Semi Major Axis			Distance						Warning		
Measured Depth	Vertical Depth	Measured Depth	Vertical Depth	Reference	Offset	Highside Toolface	Offset Wellbore Centre		Between Centres	Between Ellipses	Minimum Separation	Separation Factor			
(ft)	(ft)	(ft)	(ft)	(ft)	(ft)	(°)	+N/-S (ft)	+E/-W (ft)	(ft)	(ft)	(ft)				
0.0	0.0	0.0	0.0	0.0	0.0	66.11	4.0	9.1	10.0	10.0	0.00	N/A			
100.0	100.0	100.0	100.0	0.1	0.1	66.11	4.0	9.1	10.0	9.8	0.22	44.418			
200.0	200.0	200.0	200.0	0.3	0.3	66.11	4.0	9.1	10.0	9.3	0.67	14.806			
300.0	300.0	300.0	300.0	0.6	0.6	66.11	4.0	9.1	10.0	8.9	1.12	8.884 CC, ES			
400.0	400.0	400.0	400.0	0.8	0.8	-179.09	4.0	9.1	12.6	11.0	1.60	7.892 SF			
500.0	499.6	498.7	498.6	1.0	1.0	-175.70	3.6	11.6	22.6	20.5	2.10	10.777			
600.0	598.8	595.3	594.9	1.3	1.2	-171.59	2.2	18.9	42.2	39.6	2.63	16.026			
670.7	668.3	661.5	660.7	1.5	1.4	-169.63	0.8	26.7	61.8	58.8	3.03	20.413			
700.0	697.1	688.5	687.4	1.6	1.5	-169.02	0.1	30.5	71.1	67.9	3.15	22.534			
800.0	795.2	778.6	776.1	2.0	1.7	-167.11	-2.7	45.9	105.3	101.7	3.60	29.242			
900.0	893.4	865.6	861.0	2.4	2.1	-165.48	-6.2	64.7	143.7	139.6	4.07	35.282			
1,000.0	991.5	952.7	945.1	2.8	2.5	-164.09	-10.3	86.9	185.6	181.0	4.57	40.623			
1,100.0	1,089.6	1,043.1	1,032.3	3.2	2.9	-163.11	-14.6	110.5	228.2	223.1	5.05	45.178			
1,200.0	1,187.7	1,133.6	1,119.5	3.7	3.4	-162.44	-19.0	134.1	270.8	265.3	5.55	48.835			
1,300.0	1,285.9	1,224.0	1,206.7	4.1	3.9	-161.95	-23.3	157.7	313.4	307.4	6.05	51.820			
1,400.0	1,384.0	1,314.4	1,293.9	4.5	4.4	-161.58	-27.6	181.3	356.1	349.5	6.57	54.213			
1,500.0	1,482.1	1,404.8	1,381.0	5.0	4.9	-161.28	-32.0	205.0	398.8	391.7	7.09	56.245			
1,600.0	1,580.2	1,495.3	1,468.2	5.4	5.4	-161.05	-36.3	228.6	441.4	433.8	7.62	57.952			
1,700.0	1,678.4	1,585.7	1,555.4	5.8	5.9	-160.85	-40.7	252.2	484.1	476.0	8.15	59.406			
1,800.0	1,776.5	1,676.1	1,642.6	6.2	6.4	-160.69	-45.0	275.8	526.8	518.1	8.68	60.658			
1,900.0	1,874.6	1,766.6	1,729.7	6.7	6.9	-160.55	-49.4	299.5	569.5	560.2	9.22	61.745			
2,000.0	1,972.7	1,857.0	1,816.9	7.1	7.4	-160.43	-53.7	323.1	612.2	602.4	9.76	62.697			
2,100.0	2,070.8	1,947.4	1,904.1	7.6	7.9	-160.33	-58.1	346.7	654.8	644.5	10.31	63.536			
2,200.0	2,169.0	2,037.8	1,991.3	8.0	8.4	-160.24	-62.4	370.3	697.5	686.7	10.85	64.281			
2,300.0	2,267.1	2,128.3	2,078.5	8.4	8.9	-160.16	-66.8	393.9	740.2	728.8	11.40	64.946			
2,400.0	2,365.2	2,218.7	2,165.6	8.9	9.4	-160.09	-71.1	417.6	782.9	771.0	11.94	65.544			

<b>Company:</b>	Caerus Oil and Gas LLC	<b>Local Co-ordinate Reference:</b>	Well NPR 23C-15 596
<b>Project:</b>	SEC.15-T5S-R96W	<b>TVD Reference:</b>	WELL @ 6453.0ft (Original Well Elev)
<b>Reference Site:</b>	NPR H15 596 North Pad Sec.15-T5S-R96W	<b>MD Reference:</b>	WELL @ 6453.0ft (Original Well Elev)
<b>Site Error:</b>	0.0 ft	<b>North Reference:</b>	True
<b>Reference Well:</b>	NPR 23C-15 596	<b>Survey Calculation Method:</b>	Minimum Curvature
<b>Well Error:</b>	0.0 ft	<b>Output errors are at</b>	2.00 sigma
<b>Reference Wellbore</b>	Wellbore #1	<b>Database:</b>	US_EDM
<b>Reference Design:</b>	Plan #2 (6-14-18)	<b>Offset TVD Reference:</b>	Offset Datum

Offset Design													Offset Site Error:	0.0 ft
Survey Program: 0-MWD													Offset Well Error:	0.0 ft
Reference		Offset		Semi Major Axis			Distance							Warning
Measured Depth (ft)	Vertical Depth (ft)	Measured Depth (ft)	Vertical Depth (ft)	Reference (ft)	Offset (ft)	Highside Toolface (°)	Offset Wellbore Centre +N/-S (ft)	+E/-W (ft)	Between Centres (ft)	Between Ellipses (ft)	Minimum Separation (ft)	Separation Factor		
0.0	0.0	0.0	0.0	0.0	0.0	103.36	-2.9	12.1	12.5	12.5	0.00	N/A		
100.0	100.0	100.0	100.0	0.1	0.1	103.36	-2.9	12.1	12.5	12.2	0.22	55.398		
200.0	200.0	200.0	200.0	0.3	0.3	103.36	-2.9	12.1	12.5	11.8	0.67	18.466 CC, ES		
300.0	300.0	299.3	299.2	0.6	0.6	101.08	-2.9	14.7	15.0	13.9	1.12	13.446 SF		
400.0	400.0	397.8	397.4	0.8	0.8	-149.58	-3.3	22.2	24.8	23.2	1.61	15.416		
500.0	499.6	494.3	493.2	1.0	1.1	-152.62	-5.8	34.1	44.1	41.9	2.14	20.633		
600.0	598.8	587.6	585.1	1.3	1.4	-153.74	-10.2	49.7	72.3	69.6	2.70	26.799		
670.7	668.3	651.1	647.1	1.5	1.6	-154.00	-14.3	62.6	97.4	94.3	3.11	31.355		
700.0	697.1	676.9	672.2	1.6	1.8	-154.15	-16.2	68.3	108.9	105.6	3.24	33.549		
800.0	795.2	762.7	754.9	2.0	2.2	-154.02	-23.6	89.7	150.3	146.6	3.74	40.177		
900.0	893.4	852.3	840.7	2.4	2.7	-153.61	-32.4	114.0	193.9	189.6	4.25	45.617		
1,000.0	991.5	942.3	926.9	2.8	3.2	-153.35	-41.1	138.4	237.4	232.7	4.76	49.860		
1,100.0	1,089.6	1,032.3	1,013.1	3.2	3.8	-153.17	-49.9	162.8	281.0	275.7	5.29	53.120		
1,200.0	1,187.7	1,122.3	1,099.3	3.7	4.3	-153.04	-58.7	187.2	324.5	318.7	5.84	55.569		
1,300.0	1,285.9	1,212.3	1,185.4	4.1	4.9	-152.94	-67.5	211.7	368.1	361.7	6.39	57.606		
1,400.0	1,384.0	1,302.3	1,271.6	4.5	5.4	-152.86	-76.3	236.1	411.6	404.7	6.95	59.228		
1,500.0	1,482.1	1,392.3	1,357.8	5.0	5.9	-152.80	-85.1	260.5	455.2	447.7	7.52	60.557		
1,600.0	1,580.2	1,482.3	1,444.0	5.4	6.5	-152.75	-93.8	284.9	498.8	490.7	8.09	61.665		
1,700.0	1,678.4	1,572.4	1,530.2	5.8	7.0	-152.70	-102.6	309.3	542.3	533.7	8.66	62.601		
1,800.0	1,776.5	1,662.4	1,616.4	6.2	7.6	-152.66	-111.4	333.8	585.9	576.6	9.24	63.400		
1,900.0	1,874.6	1,752.4	1,702.6	6.7	8.1	-152.63	-120.2	358.2	629.5	619.6	9.82	64.089		
2,000.0	1,972.7	1,842.4	1,788.8	7.1	8.7	-152.60	-129.0	382.6	673.0	662.6	10.40	64.688		
2,100.0	2,070.8	1,932.4	1,875.0	7.6	9.2	-152.58	-137.8	407.0	716.6	705.6	10.99	65.214		
2,200.0	2,169.0	2,022.4	1,961.2	8.0	9.8	-152.56	-146.5	431.4	760.1	748.6	11.57	65.678		

<b>Company:</b>	Caerus Oil and Gas LLC	<b>Local Co-ordinate Reference:</b>	Well NPR 23C-15 596
<b>Project:</b>	SEC.15-T5S-R96W	<b>TVD Reference:</b>	WELL @ 6453.0ft (Original Well Elev)
<b>Reference Site:</b>	NPR H15 596 North Pad Sec.15-T5S-R96W	<b>MD Reference:</b>	WELL @ 6453.0ft (Original Well Elev)
<b>Site Error:</b>	0.0 ft	<b>North Reference:</b>	True
<b>Reference Well:</b>	NPR 23C-15 596	<b>Survey Calculation Method:</b>	Minimum Curvature
<b>Well Error:</b>	0.0 ft	<b>Output errors are at</b>	2.00 sigma
<b>Reference Wellbore</b>	Wellbore #1	<b>Database:</b>	US_EDM
<b>Reference Design:</b>	Plan #2 (6-14-18)	<b>Offset TVD Reference:</b>	Offset Datum

Offset Design													Offset Site Error:		0.0 ft
Survey Program: 0-MWD													Offset Well Error:		0.0 ft
Reference		Offset		Semi Major Axis			Distance							Warning	
Measured Depth	Vertical Depth	Measured Depth	Vertical Depth	Reference	Offset	Highside Toolface	Offset Wellbore Centre		Between Centres	Between Ellipses	Minimum Separation	Separation Factor			
(ft)	(ft)	(ft)	(ft)	(ft)	(ft)	(°)	+N/-S (ft)	+E/-W (ft)	(ft)	(ft)	(ft)				
0.0	0.0	0.0	0.0	0.0	0.0	122.93	-9.8	15.1	18.0	18.0	0.00	N/A			
100.0	100.0	100.0	100.0	0.1	0.1	122.93	-9.8	15.1	18.0	17.8	0.22	80.195			
200.0	200.0	200.0	200.0	0.3	0.3	122.93	-9.8	15.1	18.0	17.4	0.67	26.732 CC, ES			
300.0	300.0	299.0	298.9	0.6	0.5	122.37	-11.0	17.4	20.6	19.5	1.11	18.607 SF			
400.0	400.0	397.2	396.9	0.8	0.8	-127.58	-14.6	24.1	29.9	28.3	1.58	18.937			
500.0	499.6	493.6	492.4	1.0	1.0	-134.23	-20.5	34.9	47.8	45.7	2.10	22.788			
600.0	598.8	586.8	584.2	1.3	1.4	-138.82	-28.4	49.5	74.6	71.9	2.67	27.975			
670.7	668.3	650.4	646.2	1.5	1.7	-140.94	-35.0	61.6	98.7	95.6	3.09	31.938			
700.0	697.1	676.1	671.2	1.6	1.8	-141.76	-37.9	67.0	109.7	106.5	3.24	33.841			
800.0	795.2	762.0	754.0	2.0	2.2	-143.30	-48.9	87.3	150.1	146.3	3.78	39.710			
900.0	893.4	850.1	838.0	2.4	2.7	-143.91	-61.5	110.6	193.4	189.0	4.34	44.580			
1,000.0	991.5	940.2	923.8	2.8	3.3	-144.29	-74.5	134.6	236.9	232.0	4.89	48.472			
1,100.0	1,089.6	1,030.2	1,009.6	3.2	3.9	-144.55	-87.5	158.6	280.4	274.9	5.45	51.436			
1,200.0	1,187.7	1,120.2	1,095.4	3.7	4.4	-144.75	-100.5	182.6	323.9	317.9	6.04	53.624			
1,300.0	1,285.9	1,210.3	1,181.2	4.1	5.0	-144.89	-113.5	206.6	367.4	360.8	6.63	55.420			
1,400.0	1,384.0	1,300.3	1,267.0	4.5	5.6	-145.01	-126.5	230.6	410.9	403.7	7.23	56.847			
1,500.0	1,482.1	1,390.3	1,352.8	5.0	6.1	-145.10	-139.5	254.6	454.4	446.6	7.83	58.007			
1,600.0	1,580.2	1,480.4	1,438.6	5.4	6.7	-145.18	-152.5	278.5	498.0	489.5	8.44	58.970			
1,700.0	1,678.4	1,570.4	1,524.4	5.8	7.3	-145.24	-165.5	302.5	541.5	532.4	9.06	59.780			
1,800.0	1,776.5	1,660.4	1,610.2	6.2	7.9	-145.30	-178.4	326.5	585.0	575.3	9.67	60.468			
1,900.0	1,874.6	1,750.5	1,696.0	6.7	8.5	-145.35	-191.4	350.5	628.5	618.2	10.29	61.059			
2,000.0	1,972.7	1,840.5	1,781.8	7.1	9.0	-145.39	-204.4	374.5	672.0	661.1	10.91	61.572			
2,100.0	2,070.8	1,930.6	1,867.6	7.6	9.6	-145.42	-217.4	398.5	715.5	704.0	11.54	62.021			
2,200.0	2,169.0	2,020.6	1,953.4	8.0	10.2	-145.46	-230.4	422.4	759.1	746.9	12.16	62.416			



<b>Company:</b>	Caerus Oil and Gas LLC	<b>Local Co-ordinate Reference:</b>	Well NPR 23C-15 596
<b>Project:</b>	SEC.15-T5S-R96W	<b>TVD Reference:</b>	WELL @ 6453.0ft (Original Well Elev)
<b>Reference Site:</b>	NPR H15 596 North Pad Sec.15-T5S-R96W	<b>MD Reference:</b>	WELL @ 6453.0ft (Original Well Elev)
<b>Site Error:</b>	0.0 ft	<b>North Reference:</b>	True
<b>Reference Well:</b>	NPR 23C-15 596	<b>Survey Calculation Method:</b>	Minimum Curvature
<b>Well Error:</b>	0.0 ft	<b>Output errors are at</b>	2.00 sigma
<b>Reference Wellbore</b>	Wellbore #1	<b>Database:</b>	US_EDM
<b>Reference Design:</b>	Plan #2 (6-14-18)	<b>Offset TVD Reference:</b>	Offset Datum

Offset Design													Offset Site Error:	0.0 ft
Survey Program: 0-MWD													Offset Well Error:	0.0 ft
Reference		Offset		Semi Major Axis			Distance							Warning
Measured Depth (ft)	Vertical Depth (ft)	Measured Depth (ft)	Vertical Depth (ft)	Reference (ft)	Offset (ft)	Highside Toolface (°)	Offset Wellbore Centre +N/-S (ft)	+E/-W (ft)	Between Centres (ft)	Between Ellipses (ft)	Minimum Separation (ft)	Separation Factor		
0.0	0.0	0.0	0.0	0.0	0.0	-23.40	27.5	-11.9	30.0					
100.0	100.0	100.0	100.0	0.1	0.1	-23.40	27.5	-11.9	30.0	29.8	0.22	133.498		
200.0	200.0	200.0	200.0	0.3	0.3	-23.40	27.5	-11.9	30.0	29.3	0.67	44.499 CC, ES		
300.0	300.0	298.8	298.7	0.6	0.6	-26.45	28.6	-14.2	32.0	30.9	1.12	28.569		
400.0	400.0	397.1	396.8	0.8	0.8	85.11	31.8	-21.1	38.0	36.5	1.57	24.254		
500.0	499.6	494.8	493.7	1.0	1.1	85.29	37.1	-32.5	47.9	45.8	2.05	23.345 SF		
600.0	598.8	591.7	588.9	1.3	1.4	87.26	44.4	-48.2	61.4	58.8	2.62	23.444		
670.7	668.3	659.4	655.0	1.5	1.7	89.00	50.7	-61.8	73.3	70.2	3.10	23.653		
700.0	697.1	687.4	682.1	1.6	1.8	89.73	53.6	-68.0	78.8	75.5	3.31	23.806		
800.0	795.2	781.8	772.9	2.0	2.3	90.39	64.6	-91.7	100.0	95.9	4.08	24.482		
900.0	893.4	879.0	865.6	2.4	2.9	90.03	76.9	-118.2	123.0	118.1	4.90	25.088		
1,000.0	991.5	976.3	958.4	2.8	3.5	89.79	89.3	-144.8	146.1	140.3	5.74	25.465		
1,100.0	1,089.6	1,073.6	1,051.1	3.2	4.1	89.61	101.6	-171.3	169.1	162.6	6.58	25.687		
1,200.0	1,187.7	1,170.9	1,143.9	3.7	4.7	89.47	114.0	-197.9	192.2	184.7	7.44	25.824		
1,300.0	1,285.9	1,268.3	1,236.7	4.1	5.3	89.37	126.3	-224.5	215.2	206.9	8.31	25.911		
1,400.0	1,384.0	1,365.6	1,329.5	4.5	5.9	89.28	138.7	-251.0	238.3	229.1	9.18	25.968		
1,500.0	1,482.1	1,462.9	1,422.3	5.0	6.5	89.21	151.0	-277.6	261.3	251.3	10.05	26.005		
1,600.0	1,580.2	1,560.2	1,515.1	5.4	7.1	89.15	163.4	-304.2	284.4	273.5	10.93	26.030		
1,700.0	1,678.4	1,657.5	1,607.9	5.8	7.8	89.10	175.7	-330.7	307.5	295.7	11.80	26.047		
1,800.0	1,776.5	1,754.8	1,700.7	6.2	8.4	89.06	188.0	-357.3	330.5	317.8	12.68	26.058		
1,900.0	1,874.6	1,852.1	1,793.5	6.7	9.0	89.02	200.4	-383.9	353.6	340.0	13.56	26.065		
2,000.0	1,972.7	1,949.4	1,886.3	7.1	9.6	88.99	212.7	-410.4	376.6	362.2	14.45	26.069		
2,100.0	2,070.8	2,046.7	1,979.1	7.6	10.2	88.96	225.1	-437.0	399.7	384.4	15.33	26.071		
2,200.0	2,169.0	2,144.0	2,071.9	8.0	10.8	88.93	237.4	-463.6	422.7	406.5	16.21	26.072		
2,300.0	2,267.1	2,241.3	2,164.6	8.4	11.5	88.91	249.8	-490.1	445.8	428.7	17.10	26.071		
2,400.0	2,365.2	2,338.6	2,257.4	8.9	12.1	88.89	262.1	-516.7	468.8	450.9	17.98	26.070		
2,500.0	2,463.3	2,435.9	2,350.2	9.3	12.7	88.87	274.5	-543.3	491.9	473.0	18.87	26.069		
2,600.0	2,561.5	2,533.2	2,443.0	9.7	13.3	88.85	286.8	-569.8	515.0	495.2	19.76	26.067		
2,700.0	2,659.6	2,630.5	2,535.8	10.2	13.9	88.83	299.2	-596.4	538.0	517.4	20.64	26.064		
2,800.0	2,757.7	2,727.8	2,628.6	10.6	14.5	88.82	311.5	-623.0	561.1	539.5	21.53	26.062		
2,900.0	2,855.8	2,825.1	2,721.4	11.0	15.2	88.80	323.8	-649.5	584.1	561.7	22.42	26.059		
3,000.0	2,953.9	2,922.4	2,814.2	11.5	15.8	88.79	336.2	-676.1	607.2	583.9	23.30	26.057		
3,100.0	3,052.1	3,019.8	2,907.0	11.9	16.4	88.78	348.5	-702.6	630.2	606.0	24.19	26.054		
3,200.0	3,150.2	3,117.1	2,999.8	12.3	17.0	88.77	360.9	-729.2	653.3	628.2	25.08	26.051		
3,300.0	3,248.3	3,214.4	3,092.6	12.8	17.6	88.76	373.2	-755.8	676.4	650.4	25.96	26.049		
3,400.0	3,346.4	3,311.7	3,185.3	13.2	18.3	88.75	385.6	-782.3	699.4	672.6	26.85	26.046		
3,500.0	3,444.6	3,409.0	3,278.1	13.7	18.9	88.74	397.9	-808.9	722.5	694.7	27.74	26.044		
3,600.0	3,542.7	3,506.3	3,370.9	14.1	19.5	88.73	410.3	-835.5	745.5	716.9	28.63	26.041		
3,700.0	3,640.8	3,603.6	3,463.7	14.5	20.1	88.73	422.6	-862.0	768.6	739.1	29.52	26.039		
3,800.0	3,738.9	3,700.9	3,556.5	15.0	20.7	88.72	435.0	-888.6	791.6	761.2	30.41	26.036		

<b>Company:</b>	Caerus Oil and Gas LLC	<b>Local Co-ordinate Reference:</b>	Well NPR 23C-15 596
<b>Project:</b>	SEC.15-T5S-R96W	<b>TVD Reference:</b>	WELL @ 6453.0ft (Original Well Elev)
<b>Reference Site:</b>	NPR H15 596 North Pad Sec.15-T5S-R96W	<b>MD Reference:</b>	WELL @ 6453.0ft (Original Well Elev)
<b>Site Error:</b>	0.0 ft	<b>North Reference:</b>	True
<b>Reference Well:</b>	NPR 23C-15 596	<b>Survey Calculation Method:</b>	Minimum Curvature
<b>Well Error:</b>	0.0 ft	<b>Output errors are at</b>	2.00 sigma
<b>Reference Wellbore</b>	Wellbore #1	<b>Database:</b>	US_EDM
<b>Reference Design:</b>	Plan #2 (6-14-18)	<b>Offset TVD Reference:</b>	Offset Datum

Offset Design													Offset Site Error:	0.0 ft
Survey Program: 0-MWD													Offset Well Error:	0.0 ft
Reference		Offset		Semi Major Axis			Distance							Warning
Measured Depth (ft)	Vertical Depth (ft)	Measured Depth (ft)	Vertical Depth (ft)	Reference (ft)	Offset (ft)	Highside Toolface (°)	Offset Wellbore Centre +N/-S (ft)	+E/-W (ft)	Between Centres (ft)	Between Ellipses (ft)	Minimum Separation (ft)	Separation Factor		
0.0	0.0	0.0	0.0	0.0	0.0	-23.38	20.7	-8.9	22.5					
100.0	100.0	100.0	100.0	0.1	0.1	-23.38	20.7	-8.9	22.5	22.3	0.22	100.111		
200.0	200.0	200.0	200.0	0.3	0.3	-23.38	20.7	-8.9	22.5	21.8	0.67	33.370		
300.0	300.0	300.0	300.0	0.6	0.6	-23.38	20.7	-8.9	22.5	21.4	1.12	20.022 CC, ES		
400.0	400.0	399.2	399.2	0.8	0.8	93.03	21.4	-11.4	24.2	22.7	1.55	15.626		
500.0	499.6	498.3	497.9	1.0	1.0	96.16	23.5	-18.8	29.5	27.5	2.01	14.694 SF		
600.0	598.8	596.9	595.7	1.3	1.3	99.40	27.0	-31.1	38.3	35.8	2.55	15.015		
670.7	668.3	666.3	664.0	1.5	1.5	101.29	30.3	-42.6	46.8	43.8	3.02	15.492		
700.0	697.1	695.0	692.2	1.6	1.6	101.82	31.9	-48.0	50.8	47.6	3.22	15.763		
800.0	795.2	792.4	786.9	2.0	2.0	100.62	38.1	-69.6	66.0	62.0	3.98	16.564		
900.0	893.4	889.3	880.1	2.4	2.5	97.03	45.5	-95.4	83.7	78.9	4.81	17.390		
1,000.0	991.5	987.5	974.0	2.8	3.1	94.09	53.3	-122.7	102.3	96.7	5.67	18.057		
1,100.0	1,089.6	1,085.6	1,068.0	3.2	3.7	92.06	61.2	-150.0	121.2	114.6	6.53	18.553		
1,200.0	1,187.7	1,183.7	1,161.9	3.7	4.2	90.57	69.0	-177.3	140.1	132.7	7.40	18.931		
1,300.0	1,285.9	1,281.9	1,255.8	4.1	4.8	89.44	76.8	-204.6	159.1	150.8	8.28	19.228		
1,400.0	1,384.0	1,380.0	1,349.8	4.5	5.4	88.55	84.7	-231.9	178.2	169.0	9.15	19.467		
1,500.0	1,482.1	1,478.1	1,443.7	5.0	6.0	87.84	92.5	-259.2	197.3	187.2	10.03	19.664		
1,600.0	1,580.2	1,576.3	1,537.6	5.4	6.6	87.25	100.4	-286.5	216.4	205.5	10.91	19.828		
1,700.0	1,678.4	1,674.4	1,631.6	5.8	7.2	86.75	108.2	-313.8	235.5	223.7	11.80	19.967		
1,800.0	1,776.5	1,772.5	1,725.5	6.2	7.8	86.33	116.0	-341.1	254.7	242.0	12.68	20.087		
1,900.0	1,874.6	1,870.7	1,819.5	6.7	8.4	85.97	123.9	-368.4	273.8	260.3	13.56	20.190		
2,000.0	1,972.7	1,968.8	1,913.4	7.1	9.0	85.66	131.7	-395.7	293.0	278.6	14.45	20.281		
2,100.0	2,070.8	2,066.9	2,007.3	7.6	9.6	85.38	139.5	-423.0	312.2	296.9	15.33	20.361		
2,200.0	2,169.0	2,165.1	2,101.3	8.0	10.2	85.14	147.4	-450.3	331.4	315.2	16.22	20.432		
2,300.0	2,267.1	2,263.2	2,195.2	8.4	10.8	84.92	155.2	-477.5	350.6	333.5	17.10	20.496		
2,400.0	2,365.2	2,361.3	2,289.1	8.9	11.4	84.73	163.0	-504.8	369.8	351.8	17.99	20.553		
2,500.0	2,463.3	2,459.5	2,383.1	9.3	12.0	84.55	170.9	-532.1	389.0	370.1	18.88	20.605		
2,600.0	2,561.5	2,557.6	2,477.0	9.7	12.6	84.39	178.7	-559.4	408.2	388.4	19.76	20.652		
2,700.0	2,659.6	2,655.7	2,570.9	10.2	13.2	84.25	186.6	-586.7	427.4	406.7	20.65	20.695		
2,800.0	2,757.7	2,753.9	2,664.9	10.6	13.8	84.11	194.4	-614.0	446.6	425.0	21.54	20.734		
2,900.0	2,855.8	2,852.0	2,758.8	11.0	14.4	83.99	202.2	-641.3	465.8	443.4	22.43	20.770		
3,000.0	2,953.9	2,950.1	2,852.7	11.5	15.0	83.88	210.1	-668.6	485.0	461.7	23.31	20.804		
3,100.0	3,052.1	3,048.3	2,946.7	11.9	15.6	83.78	217.9	-695.9	504.2	480.0	24.20	20.835		
3,200.0	3,150.2	3,146.4	3,040.6	12.3	16.2	83.68	225.7	-723.2	523.4	498.3	25.09	20.863		
3,300.0	3,248.3	3,244.5	3,134.5	12.8	16.8	83.59	233.6	-750.5	542.6	516.7	25.98	20.890		
3,400.0	3,346.4	3,342.7	3,228.5	13.2	17.4	83.51	241.4	-777.8	561.9	535.0	26.86	20.915		
3,500.0	3,444.6	3,440.8	3,322.4	13.7	18.0	83.43	249.3	-805.1	581.1	553.3	27.75	20.938		
3,600.0	3,542.7	3,538.9	3,416.3	14.1	18.6	83.36	257.1	-832.4	600.3	571.7	28.64	20.960		
3,700.0	3,640.8	3,637.1	3,510.3	14.5	19.2	83.29	264.9	-859.7	619.5	590.0	29.53	20.981		
3,800.0	3,738.9	3,735.2	3,604.2	15.0	19.8	83.23	272.8	-886.9	638.7	608.3	30.42	21.000		
3,900.0	3,837.1	3,833.3	3,698.2	15.4	20.4	83.17	280.6	-914.2	658.0	626.7	31.30	21.018		
4,000.0	3,935.2	3,931.5	3,792.1	15.8	21.0	83.11	288.4	-941.5	677.2	645.0	32.19	21.035		
4,100.0	4,033.3	4,029.6	3,886.0	16.3	21.6	83.06	296.3	-968.8	696.4	663.3	33.08	21.051		
4,200.0	4,131.4	4,127.7	3,980.0	16.7	22.2	83.01	304.1	-996.1	715.6	681.7	33.97	21.067		
4,300.0	4,229.5	4,225.9	4,073.9	17.2	22.8	82.96	311.9	-1,023.4	734.8	700.0	34.86	21.081		
4,400.0	4,327.7	4,324.0	4,167.8	17.6	23.4	82.92	319.8	-1,050.7	754.1	718.3	35.75	21.095		
4,500.0	4,425.8	4,422.1	4,261.8	18.0	24.0	82.87	327.6	-1,078.0	773.3	736.7	36.63	21.108		
4,600.0	4,523.9	4,520.3	4,355.7	18.5	24.6	82.83	335.5	-1,105.3	792.5	755.0	37.52	21.121		

<b>Company:</b>	Caerus Oil and Gas LLC	<b>Local Co-ordinate Reference:</b>	Well NPR 23C-15 596
<b>Project:</b>	SEC.15-T5S-R96W	<b>TVD Reference:</b>	WELL @ 6453.0ft (Original Well Elev)
<b>Reference Site:</b>	NPR H15 596 North Pad Sec.15-T5S-R96W	<b>MD Reference:</b>	WELL @ 6453.0ft (Original Well Elev)
<b>Site Error:</b>	0.0 ft	<b>North Reference:</b>	True
<b>Reference Well:</b>	NPR 23C-15 596	<b>Survey Calculation Method:</b>	Minimum Curvature
<b>Well Error:</b>	0.0 ft	<b>Output errors are at</b>	2.00 sigma
<b>Reference Wellbore</b>	Wellbore #1	<b>Database:</b>	US_EDM
<b>Reference Design:</b>	Plan #2 (6-14-18)	<b>Offset TVD Reference:</b>	Offset Datum

Offset Design													Offset Site Error:	0.0 ft
Survey Program: 0-MWD													Offset Well Error:	0.0 ft
Reference		Offset		Semi Major Axis			Distance							Warning
Measured Depth (ft)	Vertical Depth (ft)	Measured Depth (ft)	Vertical Depth (ft)	Reference (ft)	Offset (ft)	Highside Toolface (°)	Offset Wellbore Centre +N/-S (ft)	+E/-W (ft)	Between Centres (ft)	Between Ellipses (ft)	Minimum Separation (ft)	Separation Factor		
0.0	0.0	0.0	0.0	0.0	0.0	-23.45	13.8	-6.0	15.0	15.0	0.00	N/A		
100.0	100.0	100.0	100.0	0.1	0.1	-23.45	13.8	-6.0	15.0	14.8	0.22	66.774		
200.0	200.0	200.0	200.0	0.3	0.3	-23.45	13.8	-6.0	15.0	14.3	0.67	22.258		
300.0	300.0	300.0	300.0	0.6	0.6	-23.45	13.8	-6.0	15.0	13.9	1.12	13.355 CC		
316.2	316.2	316.2	316.2	0.6	0.6	91.84	13.8	-6.0	15.0	13.8	1.19	12.570		
400.0	400.0	400.0	400.0	0.8	0.8	101.41	13.8	-6.0	15.3	13.7	1.56	9.817 ES		
500.0	499.6	499.6	499.6	1.0	1.0	117.75	14.1	-8.6	18.5	16.5	2.02	9.177 SF		
600.0	598.8	599.4	599.0	1.3	1.2	126.13	14.9	-16.3	25.3	22.8	2.53	10.003		
670.7	668.3	669.8	668.9	1.5	1.4	128.43	15.8	-24.9	31.9	29.0	2.95	10.823		
700.0	697.1	699.1	697.9	1.6	1.5	128.63	16.3	-29.2	34.9	31.8	3.11	11.208		
800.0	795.2	798.8	795.9	2.0	1.8	124.81	18.3	-47.2	44.7	40.9	3.77	11.861		
900.0	893.4	898.0	892.4	2.4	2.2	116.93	20.8	-70.2	54.7	50.2	4.57	11.976		
1,000.0	991.5	996.7	987.2	2.8	2.7	107.62	23.8	-97.4	66.4	60.9	5.49	12.093		
1,100.0	1,089.6	1,095.4	1,081.8	3.2	3.3	100.61	26.8	-125.5	79.5	73.1	6.42	12.390		
1,200.0	1,187.7	1,194.2	1,176.4	3.7	3.8	95.63	29.9	-153.5	93.5	86.1	7.33	12.752		
1,300.0	1,285.9	1,292.9	1,271.0	4.1	4.4	91.96	33.0	-181.6	108.0	99.7	8.23	13.117		
1,400.0	1,384.0	1,391.6	1,365.6	4.5	5.0	89.17	36.0	-209.7	122.8	113.6	9.12	13.459		
1,500.0	1,482.1	1,490.4	1,460.3	5.0	5.6	86.97	39.1	-237.7	137.8	127.8	10.01	13.772		
1,600.0	1,580.2	1,589.1	1,554.9	5.4	6.2	85.22	42.2	-265.8	153.0	142.1	10.89	14.054		
1,700.0	1,678.4	1,687.9	1,649.5	5.8	6.8	83.77	45.3	-293.8	168.3	156.6	11.77	14.307		
1,800.0	1,776.5	1,786.6	1,744.1	6.2	7.3	82.57	48.3	-321.9	183.7	171.1	12.64	14.534		
1,900.0	1,874.6	1,885.3	1,838.7	6.7	7.9	81.56	51.4	-350.0	199.2	185.7	13.51	14.739		
2,000.0	1,972.7	1,984.1	1,933.4	7.1	8.5	80.69	54.5	-378.0	214.7	200.3	14.39	14.923		
2,100.0	2,070.8	2,082.8	2,028.0	7.6	9.1	79.94	57.5	-406.1	230.3	215.0	15.26	15.090		
2,200.0	2,169.0	2,181.6	2,122.6	8.0	9.7	79.28	60.6	-434.1	245.9	229.7	16.13	15.242		
2,300.0	2,267.1	2,280.3	2,217.2	8.4	10.3	78.71	63.7	-462.2	261.5	244.5	17.00	15.380		
2,400.0	2,365.2	2,379.0	2,311.8	8.9	10.9	78.19	66.7	-490.3	277.1	259.3	17.87	15.507		
2,500.0	2,463.3	2,477.8	2,406.5	9.3	11.5	77.74	69.8	-518.3	292.8	274.1	18.74	15.623		
2,600.0	2,561.5	2,576.5	2,501.1	9.7	12.1	77.32	72.9	-546.4	308.5	288.9	19.61	15.729		
2,700.0	2,659.6	2,675.3	2,595.7	10.2	12.7	76.95	75.9	-574.4	324.2	303.7	20.48	15.828		
2,800.0	2,757.7	2,774.0	2,690.3	10.6	13.3	76.61	79.0	-602.5	339.9	318.5	21.35	15.919		
2,900.0	2,855.8	2,872.7	2,784.9	11.0	13.9	76.31	82.1	-630.6	355.6	333.4	22.22	16.004		
3,000.0	2,953.9	2,971.5	2,879.6	11.5	14.5	76.03	85.2	-658.6	371.3	348.2	23.09	16.082		
3,100.0	3,052.1	3,070.2	2,974.2	11.9	15.1	75.77	88.2	-686.7	387.1	363.1	23.96	16.156		
3,200.0	3,150.2	3,169.0	3,068.8	12.3	15.7	75.53	91.3	-714.7	402.8	378.0	24.83	16.224		
3,300.0	3,248.3	3,267.7	3,163.4	12.8	16.3	75.31	94.4	-742.8	418.6	392.9	25.70	16.288		
3,400.0	3,346.4	3,366.4	3,258.0	13.2	16.9	75.10	97.4	-770.9	434.3	407.7	26.57	16.349		
3,500.0	3,444.6	3,465.2	3,352.6	13.7	17.5	74.91	100.5	-798.9	450.1	422.6	27.43	16.405		
3,600.0	3,542.7	3,563.9	3,447.3	14.1	18.1	74.74	103.6	-827.0	465.8	437.5	28.30	16.459		
3,700.0	3,640.8	3,662.7	3,541.9	14.5	18.7	74.57	106.6	-855.0	481.6	452.4	29.17	16.509		
3,800.0	3,738.9	3,761.4	3,636.5	15.0	19.3	74.42	109.7	-883.1	497.4	467.3	30.04	16.557		
3,900.0	3,837.1	3,860.1	3,731.1	15.4	19.9	74.27	112.8	-911.2	513.1	482.2	30.91	16.602		
4,000.0	3,935.2	3,958.9	3,825.7	15.8	20.5	74.13	115.8	-939.2	528.9	497.1	31.78	16.644		
4,100.0	4,033.3	4,057.6	3,920.4	16.3	21.1	74.00	118.9	-967.3	544.7	512.1	32.65	16.685		
4,200.0	4,131.4	4,156.4	4,015.0	16.7	21.7	73.88	122.0	-995.3	560.5	527.0	33.52	16.723		
4,300.0	4,229.5	4,255.1	4,109.6	17.2	22.3	73.77	125.1	-1,023.4	576.3	541.9	34.38	16.760		
4,400.0	4,327.7	4,353.8	4,204.2	17.6	22.9	73.66	128.1	-1,051.5	592.1	556.8	35.25	16.795		
4,500.0	4,425.8	4,452.6	4,298.8	18.0	23.5	73.56	131.2	-1,079.5	607.8	571.7	36.12	16.828		
4,600.0	4,523.9	4,551.3	4,393.5	18.5	24.2	73.46	134.3	-1,107.6	623.6	586.6	36.99	16.859		
4,700.0	4,622.0	4,650.1	4,488.1	18.9	24.8	73.36	137.3	-1,135.6	639.4	601.6	37.86	16.890		
4,800.0	4,720.2	4,748.8	4,582.7	19.3	25.4	73.28	140.4	-1,163.7	655.2	616.5	38.73	16.919		
4,900.0	4,818.3	4,847.5	4,677.3	19.8	26.0	73.19	143.5	-1,191.8	671.0	631.4	39.60	16.947		

CC - Min centre to center distance or convergent point, SF - min separation factor, ES - min ellipse separation

<b>Company:</b>	Caerus Oil and Gas LLC	<b>Local Co-ordinate Reference:</b>	Well NPR 23C-15 596
<b>Project:</b>	SEC.15-T5S-R96W	<b>TVD Reference:</b>	WELL @ 6453.0ft (Original Well Elev)
<b>Reference Site:</b>	NPR H15 596 North Pad Sec.15-T5S-R96W	<b>MD Reference:</b>	WELL @ 6453.0ft (Original Well Elev)
<b>Site Error:</b>	0.0 ft	<b>North Reference:</b>	True
<b>Reference Well:</b>	NPR 23C-15 596	<b>Survey Calculation Method:</b>	Minimum Curvature
<b>Well Error:</b>	0.0 ft	<b>Output errors are at</b>	2.00 sigma
<b>Reference Wellbore</b>	Wellbore #1	<b>Database:</b>	US_EDM
<b>Reference Design:</b>	Plan #2 (6-14-18)	<b>Offset TVD Reference:</b>	Offset Datum

<b>Offset Design</b>												<b>Offset Site Error:</b>	0.0 ft
NPR H15 596 North Pad Sec.15-T5S-R96W - NPR 23A-15 596 - Wellbore #1 - Plan #1 (12-01-17)												<b>Offset Well Error:</b>	0.0 ft
Survey Program: 0-MWD													
Reference		Offset		Semi Major Axis			Distance						Warning
Measured Depth (ft)	Vertical Depth (ft)	Measured Depth (ft)	Vertical Depth (ft)	Reference (ft)	Offset (ft)	Highside Toolface (°)	Offset Wellbore Centre +N/-S (ft)	+E/-W (ft)	Between Centres (ft)	Between Ellipses (ft)	Minimum Separation (ft)	Separation Factor	
5,000.0	4,916.4	4,946.3	4,771.9	20.2	26.6	73.11	146.5	-1,219.8	686.8	646.4	40.47	16.973	
5,100.0	5,014.5	5,045.0	4,866.6	20.7	27.2	73.03	149.6	-1,247.9	702.6	661.3	41.33	16.999	
5,200.0	5,112.6	5,143.8	4,961.2	21.1	27.8	72.96	152.7	-1,275.9	718.4	676.2	42.20	17.023	
5,300.0	5,210.8	5,242.5	5,055.8	21.5	28.4	72.89	155.7	-1,304.0	734.2	691.1	43.07	17.047	
5,400.0	5,308.9	5,341.2	5,150.4	22.0	29.0	72.82	158.8	-1,332.1	750.0	706.1	43.94	17.069	
5,500.0	5,407.0	5,440.0	5,245.0	22.4	29.6	72.76	161.9	-1,360.1	765.8	721.0	44.81	17.091	
5,592.4	5,497.7	5,548.6	5,349.3	22.8	30.1	72.73	165.2	-1,390.2	780.0	734.3	45.63	17.094	
5,600.0	5,505.1	5,559.4	5,359.8	22.8	30.2	72.77	165.5	-1,392.9	781.0	735.3	45.70	17.090	
5,700.0	5,603.8	5,702.3	5,499.3	23.1	30.7	73.22	168.8	-1,423.4	792.3	745.8	46.48	17.047	
5,800.0	5,703.2	5,846.4	5,641.9	23.3	31.1	73.55	171.0	-1,443.6	799.6	752.6	47.05	16.994	

<b>Company:</b>	Caerus Oil and Gas LLC	<b>Local Co-ordinate Reference:</b>	Well NPR 23C-15 596
<b>Project:</b>	SEC.15-T5S-R96W	<b>TVD Reference:</b>	WELL @ 6453.0ft (Original Well Elev)
<b>Reference Site:</b>	NPR H15 596 North Pad Sec.15-T5S-R96W	<b>MD Reference:</b>	WELL @ 6453.0ft (Original Well Elev)
<b>Site Error:</b>	0.0 ft	<b>North Reference:</b>	True
<b>Reference Well:</b>	NPR 23C-15 596	<b>Survey Calculation Method:</b>	Minimum Curvature
<b>Well Error:</b>	0.0 ft	<b>Output errors are at</b>	2.00 sigma
<b>Reference Wellbore</b>	Wellbore #1	<b>Database:</b>	US_EDM
<b>Reference Design:</b>	Plan #2 (6-14-18)	<b>Offset TVD Reference:</b>	Offset Datum

Offset Design													Offset Site Error:	0.0 ft
Survey Program: 0-MWD													Offset Well Error:	0.0 ft
Reference		Offset		Semi Major Axis			Distance							Warning
Measured Depth (ft)	Vertical Depth (ft)	Measured Depth (ft)	Vertical Depth (ft)	Reference (ft)	Offset (ft)	Highside Toolface (°)	Offset Wellbore Centre +N/-S (ft)	+E/-W (ft)	Between Centres (ft)	Between Ellipses (ft)	Minimum Separation (ft)	Separation Factor		
0.0	0.0	0.0	0.0	0.0	0.0	-23.45	6.9	-3.0	7.5	7.5	0.00	N/A		
100.0	100.0	100.0	100.0	0.1	0.1	-23.45	6.9	-3.0	7.5	7.3	0.22	33.387		
200.0	200.0	200.0	200.0	0.3	0.3	-23.45	6.9	-3.0	7.5	6.8	0.67	11.129 CC, ES		
300.0	300.0	299.8	299.7	0.6	0.6	-39.78	6.7	-5.6	8.7	7.6	1.12	7.819 SF		
400.0	400.0	399.2	398.9	0.8	0.8	58.47	6.2	-13.3	13.2	11.7	1.56	8.467		
500.0	499.6	498.3	497.1	1.0	1.1	54.81	5.3	-26.2	19.5	17.5	2.05	9.518		
600.0	598.8	597.0	594.2	1.3	1.4	55.86	4.1	-44.0	27.1	24.5	2.61	10.372		
670.7	668.3	666.5	661.9	1.5	1.7	57.64	3.1	-59.6	33.3	30.2	3.08	10.797		
700.0	697.1	695.3	689.8	1.6	1.9	58.26	2.6	-66.7	36.2	32.9	3.28	11.019		
800.0	795.2	794.1	784.9	2.0	2.4	58.11	0.8	-93.4	47.7	43.7	4.01	11.907		
900.0	893.4	893.4	880.4	2.4	3.0	57.85	-1.0	-120.5	59.5	54.8	4.76	12.513		
1,000.0	991.5	992.7	975.9	2.8	3.5	57.67	-2.9	-147.6	71.3	65.8	5.53	12.909		
1,100.0	1,089.6	1,092.0	1,071.4	3.2	4.1	57.55	-4.7	-174.7	83.1	76.8	6.31	13.182		
1,200.0	1,187.7	1,191.3	1,167.0	3.7	4.7	57.45	-6.5	-201.8	94.9	87.9	7.09	13.383		
1,300.0	1,285.9	1,290.6	1,262.5	4.1	5.2	57.38	-8.3	-228.8	106.8	98.9	7.89	13.530		
1,400.0	1,384.0	1,389.9	1,358.0	4.5	5.8	57.32	-10.2	-255.9	118.6	109.9	8.69	13.645		
1,500.0	1,482.1	1,489.2	1,453.5	5.0	6.4	57.27	-12.0	-283.0	130.4	120.9	9.49	13.736		
1,600.0	1,580.2	1,588.5	1,549.0	5.4	7.0	57.23	-13.8	-310.1	142.2	131.9	10.30	13.809		
1,700.0	1,678.4	1,687.8	1,644.5	5.8	7.5	57.19	-15.6	-337.2	154.0	142.9	11.10	13.870		
1,800.0	1,776.5	1,787.1	1,740.0	6.2	8.1	57.16	-17.5	-364.3	165.8	153.9	11.91	13.920		
1,900.0	1,874.6	1,886.4	1,835.6	6.7	8.7	57.14	-19.3	-391.4	177.6	164.9	12.72	13.963		
2,000.0	1,972.7	1,985.7	1,931.1	7.1	9.3	57.12	-21.1	-418.5	189.4	175.9	13.53	14.000		
2,100.0	2,070.8	2,085.0	2,026.6	7.6	9.9	57.10	-22.9	-445.6	201.2	186.9	14.34	14.032		
2,200.0	2,169.0	2,184.3	2,122.1	8.0	10.4	57.08	-24.8	-472.7	213.0	197.9	15.15	14.059		
2,300.0	2,267.1	2,283.6	2,217.6	8.4	11.0	57.06	-26.6	-499.8	224.8	208.9	15.96	14.084		
2,400.0	2,365.2	2,382.9	2,313.1	8.9	11.6	57.05	-28.4	-526.9	236.6	219.9	16.78	14.105		
2,500.0	2,463.3	2,482.2	2,408.7	9.3	12.2	57.04	-30.2	-554.0	248.5	230.9	17.59	14.125		
2,600.0	2,561.5	2,581.5	2,504.2	9.7	12.8	57.03	-32.1	-581.0	260.3	241.9	18.40	14.142		
2,700.0	2,659.6	2,680.8	2,599.7	10.2	13.3	57.02	-33.9	-608.1	272.1	252.9	19.22	14.158		
2,800.0	2,757.7	2,780.1	2,695.2	10.6	13.9	57.01	-35.7	-635.2	283.9	263.8	20.03	14.172		
2,900.0	2,855.8	2,879.4	2,790.7	11.0	14.5	57.00	-37.6	-662.3	295.7	274.8	20.85	14.185		
3,000.0	2,953.9	2,978.7	2,886.2	11.5	15.1	56.99	-39.4	-689.4	307.5	285.8	21.66	14.196		
3,100.0	3,052.1	3,078.0	2,981.8	11.9	15.7	56.98	-41.2	-716.5	319.3	296.8	22.48	14.207		
3,200.0	3,150.2	3,177.3	3,077.3	12.3	16.3	56.97	-43.0	-743.6	331.1	307.8	23.29	14.217		
3,300.0	3,248.3	3,276.6	3,172.8	12.8	16.8	56.97	-44.9	-770.7	342.9	318.8	24.11	14.226		
3,400.0	3,346.4	3,375.9	3,268.3	13.2	17.4	56.96	-46.7	-797.8	354.7	329.8	24.92	14.234		
3,500.0	3,444.6	3,475.2	3,363.8	13.7	18.0	56.96	-48.5	-824.9	366.5	340.8	25.74	14.242		
3,600.0	3,542.7	3,574.5	3,459.3	14.1	18.6	56.95	-50.3	-852.0	378.3	351.8	26.55	14.250		
3,700.0	3,640.8	3,673.8	3,554.8	14.5	19.2	56.94	-52.2	-879.1	390.2	362.8	27.37	14.256		
3,800.0	3,738.9	3,773.1	3,650.4	15.0	19.7	56.94	-54.0	-906.2	402.0	373.8	28.18	14.263		
3,900.0	3,837.1	3,872.4	3,745.9	15.4	20.3	56.94	-55.8	-933.3	413.8	384.8	29.00	14.269		
4,000.0	3,935.2	3,971.7	3,841.4	15.8	20.9	56.93	-57.6	-960.3	425.6	395.8	29.81	14.274		
4,100.0	4,033.3	4,071.0	3,936.9	16.3	21.5	56.93	-59.5	-987.4	437.4	406.8	30.63	14.280		
4,200.0	4,131.4	4,170.3	4,032.4	16.7	22.1	56.92	-61.3	-1,014.5	449.2	417.8	31.45	14.285		
4,300.0	4,229.5	4,269.6	4,127.9	17.2	22.7	56.92	-63.1	-1,041.6	461.0	428.7	32.26	14.289		
4,400.0	4,327.7	4,368.9	4,223.5	17.6	23.2	56.92	-64.9	-1,068.7	472.8	439.7	33.08	14.294		
4,500.0	4,425.8	4,468.2	4,319.0	18.0	23.8	56.91	-66.8	-1,095.8	484.6	450.7	33.90	14.298		
4,600.0	4,523.9	4,567.5	4,414.5	18.5	24.4	56.91	-68.6	-1,122.9	496.4	461.7	34.71	14.302		
4,700.0	4,622.0	4,666.8	4,510.0	18.9	25.0	56.91	-70.4	-1,150.0	508.2	472.7	35.53	14.306		
4,800.0	4,720.2	4,766.1	4,605.5	19.3	25.6	56.90	-72.2	-1,177.1	520.1	483.7	36.34	14.309		
4,900.0	4,818.3	4,865.4	4,701.0	19.8	26.2	56.90	-74.1	-1,204.2	531.9	494.7	37.16	14.312		
5,000.0	4,916.4	4,964.7	4,796.5	20.2	26.7	56.90	-75.9	-1,231.3	543.7	505.7	37.98	14.316		

CC - Min centre to center distance or convergent point, SF - min separation factor, ES - min ellipse separation

<b>Company:</b>	Caerus Oil and Gas LLC	<b>Local Co-ordinate Reference:</b>	Well NPR 23C-15 596
<b>Project:</b>	SEC.15-T5S-R96W	<b>TVD Reference:</b>	WELL @ 6453.0ft (Original Well Elev)
<b>Reference Site:</b>	NPR H15 596 North Pad Sec.15-T5S-R96W	<b>MD Reference:</b>	WELL @ 6453.0ft (Original Well Elev)
<b>Site Error:</b>	0.0 ft	<b>North Reference:</b>	True
<b>Reference Well:</b>	NPR 23C-15 596	<b>Survey Calculation Method:</b>	Minimum Curvature
<b>Well Error:</b>	0.0 ft	<b>Output errors are at</b>	2.00 sigma
<b>Reference Wellbore</b>	Wellbore #1	<b>Database:</b>	US_EDM
<b>Reference Design:</b>	Plan #2 (6-14-18)	<b>Offset TVD Reference:</b>	Offset Datum

Offset Design													Offset Site Error:	0.0 ft
Survey Program: 0-MWD													Offset Well Error:	0.0 ft
Reference		Offset		Semi Major Axis			Distance						Warning	
Measured Depth (ft)	Vertical Depth (ft)	Measured Depth (ft)	Vertical Depth (ft)	Reference (ft)	Offset (ft)	Highside Toolface (°)	Offset Wellbore Centre +N/-S (ft)	+E/-W (ft)	Between Centres (ft)	Between Ellipses (ft)	Minimum Separation (ft)	Separation Factor		
5,100.0	5,014.5	5,064.0	4,892.1	20.7	27.3	56.90	-77.7	-1,258.4	555.5	516.7	38.79	14.319		
5,200.0	5,112.6	5,163.3	4,987.6	21.1	27.9	56.89	-79.6	-1,285.5	567.3	527.7	39.61	14.322		
5,300.0	5,210.8	5,262.6	5,083.1	21.5	28.5	56.89	-81.4	-1,312.5	579.1	538.7	40.43	14.325		
5,400.0	5,308.9	5,361.9	5,178.6	22.0	29.1	56.89	-83.2	-1,339.6	590.9	549.7	41.24	14.327		
5,500.0	5,407.0	5,461.2	5,274.1	22.4	29.7	56.89	-85.0	-1,366.7	602.7	560.7	42.06	14.330		
5,592.4	5,497.7	5,568.1	5,377.1	22.8	30.2	56.93	-86.9	-1,395.0	613.1	570.2	42.85	14.306		
5,600.0	5,505.1	5,578.3	5,387.1	22.8	30.3	56.97	-87.1	-1,397.5	613.8	570.9	42.92	14.299		
5,700.0	5,603.8	5,713.1	5,519.0	23.1	30.7	57.37	-89.0	-1,425.0	621.5	577.9	43.62	14.249		
5,800.0	5,703.2	5,848.5	5,653.2	23.3	31.1	57.67	-90.2	-1,443.1	626.4	582.3	44.12	14.197		
5,900.0	5,803.0	5,984.3	5,788.6	23.5	31.3	57.86	-90.8	-1,451.8	628.4	583.9	44.46	14.134		
5,957.0	5,860.0	6,054.6	5,858.9	23.6	31.4	57.92	-90.8	-1,452.6	628.3	583.7	44.58	14.094		
5,963.0	5,866.0	6,060.3	5,864.6	23.6	31.4	-57.11	-90.8	-1,452.6	628.3	591.6	36.70	17.120		
6,000.0	5,903.0	6,094.9	5,899.2	23.6	31.4	52.87	-90.9	-1,452.8	628.4	583.7	44.69	14.061		
6,100.0	6,002.9	6,188.7	5,993.0	23.8	31.5	52.85	-91.5	-1,454.4	628.6	583.6	45.02	13.963		
6,200.0	6,102.9	6,282.5	6,086.7	23.9	31.6	52.84	-92.6	-1,457.5	628.7	583.3	45.39	13.852		
6,299.9	6,202.7	6,376.6	6,180.7	24.2	31.8	52.84	-94.2	-1,461.9	628.7	582.9	45.80	13.728		
6,400.0	6,302.6	6,476.6	6,280.6	24.4	32.0	52.84	-96.2	-1,467.4	628.7	582.4	46.22	13.602		
6,500.0	6,402.4	6,576.6	6,380.4	24.6	32.2	52.85	-98.2	-1,472.8	628.6	582.0	46.64	13.478		
6,600.0	6,502.2	6,676.6	6,480.3	24.8	32.4	52.85	-100.2	-1,478.3	628.6	581.5	47.06	13.356		
6,700.0	6,602.1	6,776.6	6,580.1	25.0	32.6	52.86	-102.1	-1,483.7	628.5	581.0	47.48	13.236		
6,800.0	6,701.9	6,876.6	6,679.9	25.3	32.8	52.87	-104.1	-1,489.2	628.5	580.6	47.91	13.118		
6,900.0	6,801.7	6,976.6	6,779.8	25.5	32.9	52.87	-106.1	-1,494.6	628.4	580.1	48.33	13.001		
7,000.0	6,901.6	7,076.6	6,879.6	25.7	33.1	52.88	-108.1	-1,500.1	628.4	579.6	48.76	12.887		
7,100.0	7,001.4	7,176.6	6,979.4	25.9	33.3	52.88	-110.1	-1,505.5	628.3	579.1	49.19	12.773		
7,200.0	7,101.2	7,276.6	7,079.2	26.2	33.5	52.89	-112.1	-1,510.9	628.3	578.6	49.62	12.662		
7,300.0	7,201.0	7,376.6	7,179.1	26.4	33.7	52.90	-114.0	-1,516.4	628.2	578.2	50.05	12.552		
7,400.0	7,300.9	7,476.6	7,278.9	26.6	33.9	52.90	-116.0	-1,521.8	628.2	577.7	50.48	12.444		
7,500.0	7,400.7	7,576.6	7,378.7	26.8	34.1	52.91	-118.0	-1,527.3	628.1	577.2	50.91	12.337		
7,600.0	7,500.5	7,676.6	7,478.6	27.1	34.3	52.91	-120.0	-1,532.7	628.1	576.7	51.35	12.232		
7,700.0	7,600.3	7,776.6	7,578.4	27.3	34.5	52.92	-122.0	-1,538.2	628.0	576.2	51.78	12.128		
7,800.0	7,700.2	7,876.6	7,678.2	27.5	34.7	52.93	-123.9	-1,543.6	628.0	575.7	52.22	12.026		
7,900.0	7,800.0	7,976.6	7,778.1	27.7	34.9	52.93	-125.9	-1,549.1	627.9	575.3	52.66	11.925		
8,000.0	7,899.8	8,076.6	7,877.9	28.0	35.1	52.94	-127.9	-1,554.5	627.9	574.8	53.09	11.826		
8,100.0	7,999.7	8,176.6	7,977.7	28.2	35.3	52.94	-129.9	-1,559.9	627.8	574.3	53.53	11.728		
8,200.0	8,099.5	8,276.6	8,077.6	28.4	35.5	52.95	-131.9	-1,565.4	627.8	573.8	53.97	11.631		
8,300.0	8,199.3	8,376.6	8,177.4	28.7	35.7	52.96	-133.9	-1,570.8	627.7	573.3	54.41	11.536		
8,400.0	8,299.1	8,476.6	8,277.2	28.9	35.9	52.96	-135.8	-1,576.3	627.7	572.8	54.85	11.442		
8,500.0	8,399.0	8,576.6	8,377.1	29.1	36.1	52.97	-137.8	-1,581.7	627.6	572.3	55.30	11.350		
8,600.0	8,498.8	8,676.6	8,476.9	29.4	36.3	52.97	-139.8	-1,587.2	627.6	571.8	55.74	11.259		
8,700.0	8,598.6	8,776.6	8,576.7	29.6	36.5	52.98	-141.8	-1,592.6	627.5	571.3	56.18	11.169		
8,800.0	8,698.4	8,876.6	8,676.6	29.8	36.7	52.99	-143.8	-1,598.1	627.5	570.8	56.63	11.080		
8,900.0	8,798.3	8,976.6	8,776.4	30.0	36.9	52.99	-145.7	-1,603.5	627.4	570.3	57.07	10.993		
9,000.0	8,898.1	9,076.6	8,876.2	30.3	37.1	53.00	-147.7	-1,608.9	627.4	569.8	57.52	10.907		
9,100.0	8,997.9	9,176.6	8,976.1	30.5	37.3	53.00	-149.7	-1,614.4	627.3	569.3	57.97	10.822		
9,200.0	9,097.8	9,276.6	9,075.9	30.7	37.5	53.01	-151.7	-1,619.8	627.3	568.9	58.42	10.738		
9,210.3	9,108.0	9,286.9	9,086.1	30.8	37.6	53.01	-151.9	-1,620.4	627.3	568.8	58.46	10.730		

<b>Company:</b>	Caerus Oil and Gas LLC	<b>Local Co-ordinate Reference:</b>	Well NPR 23C-15 596
<b>Project:</b>	SEC.15-T5S-R96W	<b>TVD Reference:</b>	WELL @ 6453.0ft (Original Well Elev)
<b>Reference Site:</b>	NPR H15 596 North Pad Sec.15-T5S-R96W	<b>MD Reference:</b>	WELL @ 6453.0ft (Original Well Elev)
<b>Site Error:</b>	0.0 ft	<b>North Reference:</b>	True
<b>Reference Well:</b>	NPR 23C-15 596	<b>Survey Calculation Method:</b>	Minimum Curvature
<b>Well Error:</b>	0.0 ft	<b>Output errors are at</b>	2.00 sigma
<b>Reference Wellbore</b>	Wellbore #1	<b>Database:</b>	US_EDM
<b>Reference Design:</b>	Plan #2 (6-14-18)	<b>Offset TVD Reference:</b>	Offset Datum

Offset Design													Offset Site Error:	0.0 ft
Survey Program: 0-MWD													Offset Well Error:	0.0 ft
Reference		Offset		Semi Major Axis			Distance							Warning
Measured Depth (ft)	Vertical Depth (ft)	Measured Depth (ft)	Vertical Depth (ft)	Reference (ft)	Offset (ft)	Highside Toolface (°)	Offset Wellbore Centre +N/-S (ft)	+E/-W (ft)	Between Centres (ft)	Between Ellipses (ft)	Minimum Separation (ft)	Separation Factor		
0.0	0.0	0.0	0.0	0.0	0.0	156.55	-6.9	3.0	7.5	7.5	0.00	N/A		
100.0	100.0	100.0	100.0	0.1	0.1	156.55	-6.9	3.0	7.5	7.3	0.22	33.387		
200.0	200.0	200.0	200.0	0.3	0.3	156.55	-6.9	3.0	7.5	6.8	0.67	11.129		
300.0	300.0	300.0	300.0	0.6	0.6	156.55	-6.9	3.0	7.5	6.4	1.12	6.677		
331.8	331.8	331.8	331.8	0.6	0.6	-90.43	-6.9	3.0	7.5	6.2	1.26	5.945 CC, ES		
400.0	400.0	400.0	400.0	0.8	0.8	-107.79	-6.9	3.0	7.9	6.3	1.56	5.048		
500.0	499.6	500.0	500.0	1.0	1.0	-134.46	-8.3	0.8	10.9	8.9	2.03	5.389		
600.0	598.8	600.4	600.0	1.3	1.2	-146.09	-12.4	-6.0	15.6	13.0	2.53	6.153		
670.7	668.3	671.4	670.5	1.5	1.4	-149.86	-16.9	-13.4	19.3	16.3	2.91	6.610		
700.0	697.1	701.0	699.8	1.6	1.5	-150.53	-19.2	-17.2	20.6	17.6	3.05	6.772		
800.0	795.2	801.9	798.9	2.0	1.8	-147.39	-28.9	-33.0	22.7	19.1	3.58	6.320		
900.0	893.4	902.4	896.7	2.4	2.2	-135.55	-41.1	-52.9	21.2	16.8	4.33	4.892		
1,000.0	991.5	1,002.2	993.4	2.8	2.7	-118.95	-53.9	-74.0	20.1	14.8	5.32	3.774		
1,010.8	1,002.1	1,013.1	1,003.9	2.9	2.7	-117.08	-55.3	-76.2	20.1	14.6	5.44	3.691		
1,100.0	1,089.6	1,102.1	1,090.1	3.2	3.2	-102.03	-66.8	-95.0	20.8	14.4	6.38	3.257		
1,200.0	1,187.7	1,201.9	1,186.9	3.7	3.7	-87.39	-79.7	-116.0	23.1	15.8	7.31	3.163 SF		
1,300.0	1,285.9	1,301.7	1,283.6	4.1	4.2	-76.00	-92.5	-137.1	26.7	18.6	8.07	3.302		
1,400.0	1,384.0	1,401.5	1,380.3	4.5	4.7	-67.52	-105.4	-158.1	31.0	22.3	8.73	3.551		
1,500.0	1,482.1	1,501.3	1,477.0	5.0	5.2	-61.22	-118.3	-179.1	35.8	26.5	9.33	3.840		
1,600.0	1,580.2	1,601.1	1,573.7	5.4	5.7	-56.46	-131.1	-200.2	41.0	31.1	9.91	4.135		
1,700.0	1,678.4	1,700.9	1,670.5	5.8	6.3	-52.78	-144.0	-221.2	46.4	35.9	10.49	4.421		
1,800.0	1,776.5	1,800.8	1,767.2	6.2	6.8	-49.88	-156.9	-242.2	51.9	40.8	11.06	4.690		
1,900.0	1,874.6	1,900.6	1,863.9	6.7	7.3	-47.54	-169.7	-263.3	57.5	45.9	11.65	4.941		
2,000.0	1,972.7	2,000.4	1,960.6	7.1	7.8	-45.62	-182.6	-284.3	63.3	51.0	12.23	5.172		
2,100.0	2,070.8	2,100.2	2,057.4	7.6	8.4	-44.02	-195.5	-305.3	69.0	56.2	12.82	5.386		
2,200.0	2,169.0	2,200.0	2,154.1	8.0	8.9	-42.67	-208.3	-326.4	74.9	61.4	13.41	5.582		
2,300.0	2,267.1	2,299.8	2,250.8	8.4	9.4	-41.51	-221.2	-347.4	80.7	66.7	14.01	5.763		
2,400.0	2,365.2	2,399.7	2,347.5	8.9	9.9	-40.51	-234.1	-368.5	86.6	72.0	14.61	5.929		
2,500.0	2,463.3	2,499.5	2,444.2	9.3	10.5	-39.64	-246.9	-389.5	92.5	77.3	15.21	6.084		
2,600.0	2,561.5	2,599.3	2,541.0	9.7	11.0	-38.87	-259.8	-410.5	98.4	82.6	15.81	6.226		
2,700.0	2,659.6	2,699.1	2,637.7	10.2	11.5	-38.19	-272.7	-431.6	104.4	88.0	16.42	6.358		
2,800.0	2,757.7	2,798.9	2,734.4	10.6	12.1	-37.58	-285.5	-452.6	110.3	93.3	17.02	6.481		
2,900.0	2,855.8	2,898.7	2,831.1	11.0	12.6	-37.04	-298.4	-473.6	116.3	98.7	17.63	6.596		
3,000.0	2,953.9	2,998.6	2,927.9	11.5	13.1	-36.55	-311.2	-494.7	122.3	104.0	18.24	6.703		
3,100.0	3,052.1	3,098.4	3,024.6	11.9	13.7	-36.10	-324.1	-515.7	128.3	109.4	18.86	6.802		
3,200.0	3,150.2	3,198.2	3,121.3	12.3	14.2	-35.70	-337.0	-536.7	134.3	114.8	19.47	6.896		
3,300.0	3,248.3	3,298.0	3,218.0	12.8	14.7	-35.32	-349.8	-557.8	140.3	120.2	20.08	6.984		
3,400.0	3,346.4	3,397.8	3,314.7	13.2	15.2	-34.98	-362.7	-578.8	146.3	125.6	20.70	7.066		
3,500.0	3,444.6	3,497.6	3,411.5	13.7	15.8	-34.67	-375.6	-599.8	152.3	131.0	21.32	7.144		
3,600.0	3,542.7	3,597.4	3,508.2	14.1	16.3	-34.38	-388.4	-620.9	158.3	136.4	21.93	7.217		
3,700.0	3,640.8	3,697.3	3,604.9	14.5	16.8	-34.11	-401.3	-641.9	164.3	141.8	22.55	7.287		
3,800.0	3,738.9	3,797.1	3,701.6	15.0	17.4	-33.86	-414.2	-662.9	170.3	147.2	23.17	7.352		
3,900.0	3,837.1	3,896.9	3,798.4	15.4	17.9	-33.63	-427.0	-684.0	176.3	152.6	23.79	7.414		
4,000.0	3,935.2	3,996.7	3,895.1	15.8	18.4	-33.41	-439.9	-705.0	182.4	158.0	24.40	7.473		
4,100.0	4,033.3	4,096.5	3,991.8	16.3	19.0	-33.21	-452.8	-726.1	188.4	163.4	25.02	7.529		
4,200.0	4,131.4	4,196.3	4,088.5	16.7	19.5	-33.02	-465.6	-747.1	194.4	168.8	25.64	7.582		
4,300.0	4,229.5	4,296.2	4,185.2	17.2	20.0	-32.84	-478.5	-768.1	200.5	174.2	26.26	7.633		
4,400.0	4,327.7	4,396.0	4,282.0	17.6	20.6	-32.67	-491.4	-789.2	206.5	179.6	26.89	7.681		
4,500.0	4,425.8	4,495.8	4,378.7	18.0	21.1	-32.51	-504.2	-810.2	212.5	185.0	27.51	7.727		
4,600.0	4,523.9	4,595.6	4,475.4	18.5	21.6	-32.36	-517.1	-831.2	218.6	190.4	28.13	7.771		
4,700.0	4,622.0	4,695.4	4,572.1	18.9	22.2	-32.22	-530.0	-852.3	224.6	195.9	28.75	7.813		
4,800.0	4,720.2	4,795.2	4,668.9	19.3	22.7	-32.08	-542.8	-873.3	230.7	201.3	29.37	7.853		

CC - Min centre to center distance or convergent point, SF - min separation factor, ES - min ellipse separation



<b>Company:</b>	Caerus Oil and Gas LLC	<b>Local Co-ordinate Reference:</b>	Well NPR 23C-15 596
<b>Project:</b>	SEC.15-T5S-R96W	<b>TVD Reference:</b>	WELL @ 6453.0ft (Original Well Elev)
<b>Reference Site:</b>	NPR H15 596 North Pad Sec.15-T5S-R96W	<b>MD Reference:</b>	WELL @ 6453.0ft (Original Well Elev)
<b>Site Error:</b>	0.0 ft	<b>North Reference:</b>	True
<b>Reference Well:</b>	NPR 23C-15 596	<b>Survey Calculation Method:</b>	Minimum Curvature
<b>Well Error:</b>	0.0 ft	<b>Output errors are at</b>	2.00 sigma
<b>Reference Wellbore</b>	Wellbore #1	<b>Database:</b>	US_EDM
<b>Reference Design:</b>	Plan #2 (6-14-18)	<b>Offset TVD Reference:</b>	Offset Datum

Offset Design													Offset Site Error:	0.0 ft
Survey Program: 0-MWD													Offset Well Error:	0.0 ft
Reference		Offset		Semi Major Axis			Distance							Warning
Measured Depth (ft)	Vertical Depth (ft)	Measured Depth (ft)	Vertical Depth (ft)	Reference (ft)	Offset (ft)	Highside Toolface (°)	Offset Wellbore Centre +N/-S (ft)	+E/-W (ft)	Between Centres (ft)	Between Ellipses (ft)	Minimum Separation (ft)	Separation Factor		
4,900.0	4,818.3	4,895.1	4,765.6	19.8	23.2	-31.95	-555.7	-894.3	236.7	206.7	29.99	7.892		
5,000.0	4,916.4	4,994.9	4,862.3	20.2	23.8	-31.83	-568.5	-915.4	242.7	212.1	30.61	7.929		
5,100.0	5,014.5	5,094.7	4,959.0	20.7	24.3	-31.72	-581.4	-936.4	248.8	217.5	31.24	7.964		
5,200.0	5,112.6	5,194.5	5,055.8	21.1	24.8	-31.61	-594.3	-957.4	254.8	223.0	31.86	7.998		
5,300.0	5,210.8	5,294.3	5,152.5	21.5	25.4	-31.50	-607.1	-978.5	260.9	228.4	32.48	8.031		
5,400.0	5,308.9	5,394.1	5,249.2	22.0	25.9	-31.40	-620.0	-999.5	266.9	233.8	33.11	8.063		
5,500.0	5,407.0	5,494.0	5,345.9	22.4	26.4	-31.30	-632.9	-1,020.6	273.0	239.2	33.73	8.093		
5,592.4	5,497.7	5,592.9	5,442.0	22.8	26.9	-31.27	-645.3	-1,040.8	278.0	243.7	34.33	8.099		
5,600.0	5,505.1	5,601.7	5,450.5	22.8	26.9	-31.29	-646.3	-1,042.5	278.3	243.9	34.38	8.095		
5,700.0	5,603.8	5,716.9	5,563.7	23.1	27.3	-31.48	-657.5	-1,060.9	281.3	246.4	34.89	8.063		
5,800.0	5,703.2	5,832.4	5,678.2	23.3	27.6	-31.60	-665.2	-1,073.4	283.4	248.1	35.27	8.035		
5,900.0	5,803.0	5,947.9	5,793.5	23.5	27.7	-31.68	-669.2	-1,080.0	284.4	248.9	35.50	8.012		
5,963.0	5,866.0	6,020.4	5,865.9	23.6	27.8	-146.73	-669.9	-1,081.1	284.6	233.5	51.08	5.570		
6,000.0	5,903.0	6,055.9	5,901.5	23.6	27.9	-36.73	-670.0	-1,081.2	284.6	248.8	35.72	7.966		
6,100.0	6,002.9	6,152.1	5,997.6	23.8	28.0	-36.73	-670.4	-1,082.6	284.5	248.4	36.12	7.878		
6,200.0	6,102.9	6,248.3	6,093.7	23.9	28.1	-36.74	-671.5	-1,085.4	284.5	247.9	36.54	7.784		
6,299.9	6,202.7	6,344.4	6,189.7	24.2	28.3	-36.76	-673.1	-1,089.8	284.3	247.4	37.00	7.686		
6,400.0	6,302.6	6,444.1	6,289.3	24.4	28.5	-36.77	-675.1	-1,095.3	284.3	246.9	37.42	7.598		
6,500.0	6,402.4	6,544.1	6,389.1	24.6	28.7	-36.77	-677.1	-1,100.8	284.3	246.4	37.85	7.511		
6,600.0	6,502.2	6,644.1	6,488.9	24.8	28.9	-36.78	-679.1	-1,106.3	284.3	246.0	38.27	7.427		
6,700.0	6,602.1	6,744.1	6,588.8	25.0	29.1	-36.78	-681.1	-1,111.7	284.2	245.5	38.70	7.344		
6,800.0	6,701.9	6,844.1	6,688.6	25.3	29.4	-36.79	-683.1	-1,117.2	284.2	245.1	39.13	7.263		
6,900.0	6,801.7	6,944.1	6,788.4	25.5	29.6	-36.79	-685.1	-1,122.7	284.2	244.6	39.56	7.183		
7,000.0	6,901.6	7,044.1	6,888.3	25.7	29.8	-36.80	-687.1	-1,128.2	284.1	244.2	39.99	7.105		
7,100.0	7,001.4	7,144.1	6,988.1	25.9	30.0	-36.80	-689.1	-1,133.7	284.1	243.7	40.42	7.029		
7,200.0	7,101.2	7,244.1	7,087.9	26.2	30.2	-36.81	-691.1	-1,139.2	284.1	243.2	40.85	6.954		
7,300.0	7,201.0	7,344.1	7,187.8	26.4	30.4	-36.81	-693.1	-1,144.7	284.1	242.8	41.29	6.880		
7,400.0	7,300.9	7,444.1	7,287.6	26.6	30.6	-36.81	-695.0	-1,150.2	284.0	242.3	41.72	6.808		
7,500.0	7,400.7	7,544.1	7,387.4	26.8	30.8	-36.82	-697.0	-1,155.6	284.0	241.8	42.16	6.737		
7,600.0	7,500.5	7,644.1	7,487.2	27.1	31.0	-36.82	-699.0	-1,161.1	284.0	241.4	42.59	6.667		
7,700.0	7,600.3	7,744.1	7,587.1	27.3	31.3	-36.83	-701.0	-1,166.6	283.9	240.9	43.03	6.599		
7,800.0	7,700.2	7,844.1	7,686.9	27.5	31.5	-36.83	-703.0	-1,172.1	283.9	240.4	43.47	6.532		
7,900.0	7,800.0	7,944.1	7,786.7	27.7	31.7	-36.84	-705.0	-1,177.6	283.9	240.0	43.90	6.466		
8,000.0	7,899.8	8,044.1	7,886.6	28.0	31.9	-36.84	-707.0	-1,183.1	283.9	239.5	44.34	6.401		
8,100.0	7,999.7	8,144.1	7,986.4	28.2	32.1	-36.85	-709.0	-1,188.6	283.8	239.0	44.78	6.338		
8,200.0	8,099.5	8,244.1	8,086.2	28.4	32.3	-36.85	-711.0	-1,194.1	283.8	238.6	45.22	6.276		
8,300.0	8,199.3	8,344.1	8,186.0	28.7	32.5	-36.85	-713.0	-1,199.5	283.8	238.1	45.66	6.214		
8,400.0	8,299.1	8,444.1	8,285.9	28.9	32.8	-36.86	-715.0	-1,205.0	283.7	237.6	46.10	6.154		
8,500.0	8,399.0	8,544.1	8,385.7	29.1	33.0	-36.86	-717.0	-1,210.5	283.7	237.2	46.55	6.095		
8,600.0	8,498.8	8,644.1	8,485.5	29.4	33.2	-36.87	-719.0	-1,216.0	283.7	236.7	46.99	6.037		
8,700.0	8,598.6	8,744.1	8,585.4	29.6	33.4	-36.87	-721.0	-1,221.5	283.6	236.2	47.43	5.980		
8,800.0	8,698.4	8,844.1	8,685.2	29.8	33.6	-36.88	-723.0	-1,227.0	283.6	235.7	47.88	5.924		
8,900.0	8,798.3	8,944.1	8,785.0	30.0	33.9	-36.88	-725.0	-1,232.5	283.6	235.3	48.32	5.869		
9,000.0	8,898.1	9,044.1	8,884.9	30.3	34.1	-36.89	-727.0	-1,238.0	283.6	234.8	48.77	5.815		
9,100.0	8,997.9	9,144.1	8,984.7	30.5	34.3	-36.89	-729.0	-1,243.4	283.5	234.3	49.21	5.762		
9,200.0	9,097.8	9,244.1	9,084.5	30.7	34.5	-36.90	-731.0	-1,248.9	283.5	233.8	49.66	5.709		
9,210.3	9,108.0	9,254.4	9,094.8	30.8	34.5	-36.90	-731.2	-1,249.5	283.5	233.8	49.70	5.704		



<b>Company:</b>	Caerus Oil and Gas LLC	<b>Local Co-ordinate Reference:</b>	Well NPR 23C-15 596
<b>Project:</b>	SEC.15-T5S-R96W	<b>TVD Reference:</b>	WELL @ 6453.0ft (Original Well Elev)
<b>Reference Site:</b>	NPR H15 596 North Pad Sec.15-T5S-R96W	<b>MD Reference:</b>	WELL @ 6453.0ft (Original Well Elev)
<b>Site Error:</b>	0.0 ft	<b>North Reference:</b>	True
<b>Reference Well:</b>	NPR 23C-15 596	<b>Survey Calculation Method:</b>	Minimum Curvature
<b>Well Error:</b>	0.0 ft	<b>Output errors are at</b>	2.00 sigma
<b>Reference Wellbore</b>	Wellbore #1	<b>Database:</b>	US_EDM
<b>Reference Design:</b>	Plan #2 (6-14-18)	<b>Offset TVD Reference:</b>	Offset Datum

Offset Design													Offset Site Error:	0.0 ft
Survey Program: 0-MWD													Offset Well Error:	0.0 ft
Reference		Offset		Semi Major Axis		Highside Toolface (°)	Offset Wellbore Centre		Distance		Minimum Separation (ft)	Separation Factor	Warning	
Measured Depth (ft)	Vertical Depth (ft)	Measured Depth (ft)	Vertical Depth (ft)	Reference (ft)	Offset (ft)		+N/-S (ft)	+E/-W (ft)	Between Centres (ft)	Between Ellipses (ft)				
0.0	0.0	0.0	0.0	0.0	0.0	156.65	-13.8	5.9	15.0	15.0	0.00	N/A		
100.0	100.0	100.0	100.0	0.1	0.1	156.65	-13.8	5.9	15.0	14.8	0.22	66.724		
200.0	200.0	200.0	200.0	0.3	0.3	156.65	-13.8	5.9	15.0	14.3	0.67	22.241 CC, ES		
300.0	300.0	299.2	299.2	0.6	0.5	152.23	-15.3	8.0	17.3	16.2	1.11	15.593 SF		
400.0	400.0	397.8	397.4	0.8	0.8	-106.42	-19.7	14.3	25.1	23.5	1.56	16.127		
500.0	499.6	494.5	493.3	1.0	1.0	-120.35	-27.0	24.4	41.1	39.1	2.06	19.948		
600.0	598.8	588.3	585.6	1.3	1.4	-128.90	-36.7	37.9	66.3	63.7	2.63	25.167		
670.7	668.3	652.3	648.1	1.5	1.7	-132.57	-44.8	49.3	89.3	86.2	3.07	29.110		
700.0	697.1	678.4	673.4	1.6	1.8	-133.87	-48.5	54.4	99.9	96.7	3.23	30.933		
800.0	795.2	765.2	756.9	2.0	2.2	-136.40	-62.1	73.4	138.9	135.1	3.80	36.594		
900.0	893.4	849.7	837.3	2.4	2.8	-137.37	-77.5	94.9	181.9	177.5	4.39	41.435		
1,000.0	991.5	939.3	921.9	2.8	3.3	-137.87	-94.7	118.8	226.3	221.3	4.98	45.451		
1,100.0	1,089.6	1,028.9	1,006.6	3.2	3.9	-138.20	-111.8	142.6	270.7	265.1	5.58	48.544		
1,200.0	1,187.7	1,118.5	1,091.2	3.7	4.6	-138.45	-128.9	166.5	315.1	308.9	6.20	50.840		
1,300.0	1,285.9	1,208.1	1,175.8	4.1	5.2	-138.63	-146.0	190.4	359.5	352.7	6.82	52.697		
1,400.0	1,384.0	1,297.7	1,260.5	4.5	5.8	-138.77	-163.2	214.3	403.9	396.5	7.46	54.164		
1,500.0	1,482.1	1,387.3	1,345.1	5.0	6.4	-138.88	-180.3	238.2	448.3	440.2	8.10	55.353		
1,600.0	1,580.2	1,476.9	1,429.7	5.4	7.0	-138.98	-197.4	262.1	492.7	484.0	8.75	56.336		
1,700.0	1,678.4	1,566.5	1,514.4	5.8	7.6	-139.05	-214.5	286.0	537.1	527.8	9.40	57.161		
1,800.0	1,776.5	1,656.1	1,599.0	6.2	8.3	-139.12	-231.7	309.9	581.6	571.5	10.05	57.860		
1,900.0	1,874.6	1,745.7	1,683.6	6.7	8.9	-139.18	-248.8	333.7	626.0	615.3	10.71	58.459		
2,000.0	1,972.7	1,835.3	1,768.3	7.1	9.5	-139.23	-265.9	357.6	670.4	659.0	11.37	58.978		
2,100.0	2,070.8	1,924.9	1,852.9	7.6	10.1	-139.27	-283.0	381.5	714.8	702.8	12.03	59.431		
2,200.0	2,169.0	2,014.4	1,937.5	8.0	10.7	-139.31	-300.2	405.4	759.2	746.5	12.69	59.830		

<b>Company:</b>	Caerus Oil and Gas LLC	<b>Local Co-ordinate Reference:</b>	Well NPR 23C-15 596
<b>Project:</b>	SEC.15-T5S-R96W	<b>TVD Reference:</b>	WELL @ 6453.0ft (Original Well Elev)
<b>Reference Site:</b>	NPR H15 596 North Pad Sec.15-T5S-R96W	<b>MD Reference:</b>	WELL @ 6453.0ft (Original Well Elev)
<b>Site Error:</b>	0.0 ft	<b>North Reference:</b>	True
<b>Reference Well:</b>	NPR 23C-15 596	<b>Survey Calculation Method:</b>	Minimum Curvature
<b>Well Error:</b>	0.0 ft	<b>Output errors are at</b>	2.00 sigma
<b>Reference Wellbore</b>	Wellbore #1	<b>Database:</b>	US_EDM
<b>Reference Design:</b>	Plan #2 (6-14-18)	<b>Offset TVD Reference:</b>	Offset Datum

<b>Offset Design</b> NPR H15 596 South Pad Sec.15-T5S-R96W - NPR 11A-14 596 - Wellbore #1 - Plan #1 (11-30-17)												<b>Offset Site Error:</b>	0.0 ft
Survey Program: 0-MWD												<b>Offset Well Error:</b>	0.0 ft
Reference		Offset		Semi Major Axis			Distance						Warning
Measured Depth (ft)	Vertical Depth (ft)	Measured Depth (ft)	Vertical Depth (ft)	Reference (ft)	Offset (ft)	Highside Toolface (°)	Offset Wellbore Centre +N/-S (ft)	+E/-W (ft)	Between Centres (ft)	Between Ellipses (ft)	Minimum Separation (ft)	Separation Factor	
0.0	0.0	0.0	0.0	0.0	0.0	-21.45	273.4	-107.5	293.8				
100.0	100.0	100.0	100.0	0.1	0.1	-21.45	273.4	-107.5	293.8	293.6	0.22	1,307.144	
200.0	200.0	200.0	200.0	0.3	0.3	-21.45	273.4	-107.5	293.8	293.1	0.67	435.715	
300.0	300.0	300.0	300.0	0.6	0.6	-21.45	273.4	-107.5	293.8	292.7	1.12	261.429 CC	
400.0	400.0	400.0	400.0	0.8	0.8	94.08	273.4	-107.5	294.0	292.4	1.56	188.731 ES	
500.0	499.6	499.6	499.6	1.0	1.0	95.58	273.4	-107.5	294.6	292.6	2.00	147.078	
600.0	598.8	590.9	590.8	1.3	1.2	98.13	275.1	-106.1	297.5	295.0	2.48	119.775	
670.7	668.3	653.8	653.7	1.5	1.4	100.69	278.2	-103.5	302.2	299.4	2.87	105.292	
700.0	697.1	679.6	679.3	1.6	1.4	101.94	280.0	-102.1	305.0	301.9	3.04	100.348	
800.0	795.2	765.8	765.0	2.0	1.6	106.32	287.7	-95.7	317.5	313.9	3.63	87.357	
900.0	893.4	849.6	847.6	2.4	1.9	110.70	298.1	-87.2	335.4	331.2	4.24	79.042	
1,000.0	991.5	930.7	927.0	2.8	2.2	114.92	310.8	-76.7	358.9	354.1	4.85	73.987	
1,100.0	1,089.6	1,009.0	1,003.0	3.2	2.5	118.83	325.5	-64.6	388.0	382.5	5.45	71.242	
1,200.0	1,187.7	1,084.3	1,075.3	3.7	2.8	122.38	341.9	-51.1	422.3	416.3	6.03	70.072	
1,300.0	1,285.9	1,156.7	1,143.9	4.1	3.2	125.54	359.8	-36.4	461.7	455.1	6.59	70.051 SF	
1,400.0	1,384.0	1,226.1	1,208.7	4.5	3.6	128.32	378.8	-20.8	505.7	498.5	7.13	70.907	
1,500.0	1,482.1	1,300.0	1,276.8	5.0	4.1	131.00	401.0	-2.6	553.9	546.2	7.67	72.225	
1,600.0	1,580.2	1,355.9	1,327.5	5.4	4.6	132.84	419.1	12.4	605.8	597.7	8.16	74.237	
1,700.0	1,678.4	1,416.4	1,381.7	5.8	5.0	134.67	440.0	29.6	661.3	652.6	8.65	76.407	
1,800.0	1,776.5	1,474.2	1,432.5	6.2	5.5	136.26	461.2	47.0	719.9	710.7	9.14	78.802	
1,900.0	1,874.6	1,542.7	1,492.0	6.7	6.2	137.95	487.5	68.6	780.9	771.2	9.63	81.070	

<b>Company:</b>	Caerus Oil and Gas LLC	<b>Local Co-ordinate Reference:</b>	Well NPR 23C-15 596
<b>Project:</b>	SEC.15-T5S-R96W	<b>TVD Reference:</b>	WELL @ 6453.0ft (Original Well Elev)
<b>Reference Site:</b>	NPR H15 596 North Pad Sec.15-T5S-R96W	<b>MD Reference:</b>	WELL @ 6453.0ft (Original Well Elev)
<b>Site Error:</b>	0.0 ft	<b>North Reference:</b>	True
<b>Reference Well:</b>	NPR 23C-15 596	<b>Survey Calculation Method:</b>	Minimum Curvature
<b>Well Error:</b>	0.0 ft	<b>Output errors are at</b>	2.00 sigma
<b>Reference Wellbore</b>	Wellbore #1	<b>Database:</b>	US_EDM
<b>Reference Design:</b>	Plan #2 (6-14-18)	<b>Offset TVD Reference:</b>	Offset Datum

Offset Design													Offset Site Error:	0.0 ft
Survey Program: 0-MWD													Offset Well Error:	0.0 ft
Reference		Offset		Semi Major Axis			Distance							Warning
Measured Depth (ft)	Vertical Depth (ft)	Measured Depth (ft)	Vertical Depth (ft)	Reference (ft)	Offset (ft)	Highside Toolface (°)	Offset Wellbore Centre +N/-S (ft)	+E/-W (ft)	Between Centres (ft)	Between Ellipses (ft)	Minimum Separation (ft)	Separation Factor		
0.0	0.0	0.0	0.0	0.0	0.0	-21.39	266.6	-104.5	286.4					
100.0	100.0	100.0	100.0	0.1	0.1	-21.39	266.6	-104.5	286.4	286.1	0.22	1,274.080		
200.0	200.0	200.0	200.0	0.3	0.3	-21.39	266.6	-104.5	286.4	285.7	0.67	424.693 CC, ES		
300.0	300.0	293.9	293.9	0.6	0.6	-20.98	268.3	-102.9	287.4	286.3	1.11	259.023		
400.0	400.0	387.1	386.8	0.8	0.8	95.64	273.3	-98.2	290.9	289.4	1.55	188.165		
500.0	499.6	478.3	477.3	1.0	1.0	98.70	281.4	-90.6	297.9	295.9	2.02	147.229		
600.0	598.8	566.2	564.0	1.3	1.3	102.80	292.1	-80.4	309.7	307.2	2.59	119.793		
670.7	668.3	625.9	622.3	1.5	1.6	106.06	301.0	-72.0	322.0	318.9	3.04	106.056		
700.0	697.1	650.0	645.8	1.6	1.7	107.60	305.0	-68.3	328.1	324.8	3.23	101.561		
800.0	795.2	730.2	723.5	2.0	2.0	112.63	319.8	-54.3	352.9	349.0	3.89	90.641		
900.0	893.4	807.3	797.1	2.4	2.4	117.22	336.3	-38.8	384.0	379.4	4.54	84.483		
1,000.0	991.5	881.1	866.8	2.8	2.9	121.33	354.0	-22.0	420.8	415.6	5.18	81.258		
1,100.0	1,089.6	951.7	932.4	3.2	3.4	124.93	372.8	-4.3	463.0	457.2	5.78	80.047 SF		
1,200.0	1,187.7	1,019.0	994.2	3.7	3.9	128.05	392.4	14.2	510.0	503.6	6.36	80.233		
1,300.0	1,285.9	1,089.6	1,057.9	4.1	4.5	131.00	414.5	35.0	561.1	554.2	6.92	81.058		
1,400.0	1,384.0	1,170.1	1,130.4	4.5	5.1	133.90	440.0	59.1	614.1	606.6	7.48	82.144		
1,500.0	1,482.1	1,250.7	1,202.9	5.0	5.8	136.37	465.5	83.1	668.2	660.2	7.99	83.577		
1,600.0	1,580.2	1,331.2	1,275.4	5.4	6.5	138.49	491.0	107.2	723.1	714.6	8.50	85.046		
1,700.0	1,678.4	1,411.8	1,347.9	5.8	7.2	140.34	516.4	131.3	778.6	769.6	9.00	86.516		

<b>Company:</b>	Caerus Oil and Gas LLC	<b>Local Co-ordinate Reference:</b>	Well NPR 23C-15 596
<b>Project:</b>	SEC.15-T5S-R96W	<b>TVD Reference:</b>	WELL @ 6453.0ft (Original Well Elev)
<b>Reference Site:</b>	NPR H15 596 North Pad Sec.15-T5S-R96W	<b>MD Reference:</b>	WELL @ 6453.0ft (Original Well Elev)
<b>Site Error:</b>	0.0 ft	<b>North Reference:</b>	True
<b>Reference Well:</b>	NPR 23C-15 596	<b>Survey Calculation Method:</b>	Minimum Curvature
<b>Well Error:</b>	0.0 ft	<b>Output errors are at</b>	2.00 sigma
<b>Reference Wellbore</b>	Wellbore #1	<b>Database:</b>	US_EDM
<b>Reference Design:</b>	Plan #2 (6-14-18)	<b>Offset TVD Reference:</b>	Offset Datum

Offset Design													Offset Site Error:	0.0 ft
Survey Program: 0-MWD													Offset Well Error:	0.0 ft
Reference		Offset		Semi Major Axis			Distance							Warning
Measured Depth (ft)	Vertical Depth (ft)	Measured Depth (ft)	Vertical Depth (ft)	Reference (ft)	Offset (ft)	Highside Toolface (°)	Offset Wellbore Centre +N/-S (ft)	+E/-W (ft)	Between Centres (ft)	Between Ellipses (ft)	Minimum Separation (ft)	Separation Factor		
0.0	0.0	0.0	0.0	0.0	0.0	-21.33	259.7	-101.4	278.8					
100.0	100.0	100.0	100.0	0.1	0.1	-21.33	259.7	-101.4	278.8	278.6	0.22	1,240.322		
200.0	200.0	200.0	200.0	0.3	0.3	-21.33	259.7	-101.4	278.8	278.1	0.67	413.441		
300.0	300.0	300.0	300.0	0.6	0.6	-21.33	259.7	-101.4	278.8	277.7	1.12	248.064 CC, ES		
400.0	400.0	394.8	394.8	0.8	0.8	94.62	261.3	-99.7	279.9	278.3	1.54	181.201		
500.0	499.6	488.3	488.0	1.0	1.0	97.28	265.9	-94.5	283.6	281.6	1.99	142.571		
600.0	598.8	578.9	577.9	1.3	1.2	101.33	273.3	-86.3	291.4	288.9	2.51	115.909		
670.7	668.3	640.7	638.9	1.5	1.4	104.75	280.0	-78.9	300.3	297.3	2.94	101.971		
700.0	697.1	665.7	663.5	1.6	1.5	106.35	283.1	-75.5	304.9	301.8	3.13	97.380		
800.0	795.2	749.2	745.0	2.0	1.8	111.71	294.9	-62.4	324.6	320.9	3.78	85.789		
900.0	893.4	829.5	822.7	2.4	2.2	116.75	308.6	-47.3	350.6	346.1	4.44	79.025		
1,000.0	991.5	900.0	890.2	2.8	2.6	120.95	322.4	-32.1	382.6	377.6	5.04	75.853		
1,100.0	1,089.6	980.3	966.0	3.2	3.1	125.40	340.1	-12.5	420.3	414.6	5.68	73.990		
1,200.0	1,187.7	1,050.8	1,031.6	3.7	3.5	128.96	357.4	6.7	463.2	456.9	6.26	73.949 SF		
1,300.0	1,285.9	1,120.3	1,095.3	4.1	4.0	132.15	376.0	27.3	510.8	504.0	6.81	74.974		
1,400.0	1,384.0	1,202.2	1,170.0	4.5	4.7	135.41	398.5	52.2	561.0	553.7	7.37	76.081		
1,500.0	1,482.1	1,284.1	1,244.6	5.0	5.3	138.17	421.1	77.2	612.5	604.6	7.90	77.538		
1,600.0	1,580.2	1,365.9	1,319.3	5.4	6.0	140.53	443.7	102.2	665.0	656.6	8.40	79.135		
1,700.0	1,678.4	1,447.8	1,393.9	5.8	6.6	142.57	466.2	127.1	718.2	709.3	8.90	80.735		
1,800.0	1,776.5	1,529.7	1,468.5	6.2	7.3	144.35	488.8	152.1	772.0	762.7	9.38	82.300		

<b>Company:</b>	Caerus Oil and Gas LLC	<b>Local Co-ordinate Reference:</b>	Well NPR 23C-15 596
<b>Project:</b>	SEC.15-T5S-R96W	<b>TVD Reference:</b>	WELL @ 6453.0ft (Original Well Elev)
<b>Reference Site:</b>	NPR H15 596 North Pad Sec.15-T5S-R96W	<b>MD Reference:</b>	WELL @ 6453.0ft (Original Well Elev)
<b>Site Error:</b>	0.0 ft	<b>North Reference:</b>	True
<b>Reference Well:</b>	NPR 23C-15 596	<b>Survey Calculation Method:</b>	Minimum Curvature
<b>Well Error:</b>	0.0 ft	<b>Output errors are at</b>	2.00 sigma
<b>Reference Wellbore</b>	Wellbore #1	<b>Database:</b>	US_EDM
<b>Reference Design:</b>	Plan #2 (6-14-18)	<b>Offset TVD Reference:</b>	Offset Datum

Offset Design													Offset Site Error:	0.0 ft
Survey Program: 0-MWD													Offset Well Error:	0.0 ft
Reference		Offset		Semi Major Axis			Distance						Warning	
Measured Depth (ft)	Vertical Depth (ft)	Measured Depth (ft)	Vertical Depth (ft)	Reference (ft)	Offset (ft)	Highside Toolface (°)	Offset Wellbore Centre +N/-S (ft)	+E/-W (ft)	Between Centres (ft)	Between Ellipses (ft)	Minimum Separation (ft)	Separation Factor		
0.0	0.0	0.0	0.0	0.0	0.0	-21.28	252.8	-98.5	271.3					
100.0	100.0	100.0	100.0	0.1	0.1	-21.28	252.8	-98.5	271.3	271.1	0.22	1,207.200		
200.0	200.0	200.0	200.0	0.3	0.3	-21.28	252.8	-98.5	271.3	270.7	0.67	402.400		
300.0	300.0	300.0	300.0	0.6	0.6	-21.28	252.8	-98.5	271.3	270.2	1.12	241.440 CC		
400.0	400.0	400.0	400.0	0.8	0.8	94.30	252.8	-98.5	271.5	270.0	1.56	174.312 ES		
500.0	499.6	495.4	495.4	1.0	1.0	96.30	254.3	-96.6	273.0	271.0	1.99	137.094		
600.0	598.8	588.7	588.4	1.3	1.2	100.01	258.4	-91.0	277.5	275.0	2.49	111.575		
670.7	668.3	652.5	651.8	1.5	1.4	103.42	262.8	-85.1	283.4	280.5	2.89	97.899		
700.0	697.1	678.5	677.5	1.6	1.4	105.04	265.0	-82.3	286.7	283.6	3.07	93.348		
800.0	795.2	765.2	763.0	2.0	1.7	110.57	273.7	-70.6	301.5	297.8	3.70	81.444		
900.0	893.4	848.8	844.7	2.4	2.0	115.96	284.3	-56.4	322.2	317.9	4.34	74.170		
1,000.0	991.5	929.2	922.5	2.8	2.4	121.00	296.4	-40.1	349.0	344.1	4.98	70.137		
1,100.0	1,089.6	1,000.0	990.2	3.2	2.7	125.21	308.8	-23.6	381.8	376.3	5.56	68.645		
1,200.0	1,187.7	1,080.2	1,065.9	3.7	3.2	129.63	324.6	-2.5	420.1	413.9	6.17	68.059 SF		
1,300.0	1,285.9	1,150.8	1,131.6	4.1	3.7	133.18	340.0	18.2	463.6	456.8	6.73	68.859		
1,400.0	1,384.0	1,231.5	1,206.0	4.5	4.3	136.77	358.8	43.3	510.8	503.5	7.29	70.111		
1,500.0	1,482.1	1,314.6	1,282.6	5.0	4.9	139.90	378.1	69.1	559.5	551.7	7.81	71.624		
1,600.0	1,580.2	1,397.7	1,359.1	5.4	5.5	142.56	397.4	95.0	609.5	601.2	8.31	73.312		
1,700.0	1,678.4	1,480.8	1,435.7	5.8	6.1	144.85	416.7	120.8	660.4	651.6	8.80	75.001		
1,800.0	1,776.5	1,563.8	1,512.2	6.2	6.8	146.83	436.1	146.7	711.9	702.7	9.29	76.672		
1,900.0	1,874.6	1,646.9	1,588.8	6.7	7.4	148.55	455.4	172.5	764.1	754.3	9.76	78.289		

<b>Company:</b>	Caerus Oil and Gas LLC	<b>Local Co-ordinate Reference:</b>	Well NPR 23C-15 596
<b>Project:</b>	SEC.15-T5S-R96W	<b>TVD Reference:</b>	WELL @ 6453.0ft (Original Well Elev)
<b>Reference Site:</b>	NPR H15 596 North Pad Sec.15-T5S-R96W	<b>MD Reference:</b>	WELL @ 6453.0ft (Original Well Elev)
<b>Site Error:</b>	0.0 ft	<b>North Reference:</b>	True
<b>Reference Well:</b>	NPR 23C-15 596	<b>Survey Calculation Method:</b>	Minimum Curvature
<b>Well Error:</b>	0.0 ft	<b>Output errors are at</b>	2.00 sigma
<b>Reference Wellbore</b>	Wellbore #1	<b>Database:</b>	US_EDM
<b>Reference Design:</b>	Plan #2 (6-14-18)	<b>Offset TVD Reference:</b>	Offset Datum

Offset Design													Offset Site Error:	0.0 ft
Survey Program: 0-MWD													Offset Well Error:	0.0 ft
Reference		Offset		Semi Major Axis			Distance						Warning	
Measured Depth (ft)	Vertical Depth (ft)	Measured Depth (ft)	Vertical Depth (ft)	Reference (ft)	Offset (ft)	Highside Toolface (°)	Offset Wellbore Centre +N/-S (ft)	+E/-W (ft)	Between Centres (ft)	Between Ellipses (ft)	Minimum Separation (ft)	Separation Factor		
0.0	0.0	0.0	0.0	0.0	0.0	-21.23	245.9	-95.6	263.9					
100.0	100.0	100.0	100.0	0.1	0.1	-21.23	245.9	-95.6	263.9	263.6	0.22	1,173.928		
200.0	200.0	200.0	200.0	0.3	0.3	-21.23	245.9	-95.6	263.9	263.2	0.67	391.309		
300.0	300.0	300.0	300.0	0.6	0.6	-21.23	245.9	-95.6	263.9	262.7	1.12	234.786 CC		
400.0	400.0	400.0	400.0	0.8	0.8	94.36	245.9	-95.6	264.0	262.5	1.56	169.512 ES		
500.0	499.6	499.6	499.6	1.0	1.0	96.03	245.9	-95.6	264.8	262.8	2.00	132.150		
600.0	598.8	595.4	595.3	1.3	1.2	99.12	247.2	-93.5	267.1	264.6	2.49	107.226		
670.7	668.3	661.3	661.1	1.5	1.4	102.31	249.4	-89.7	270.8	267.9	2.88	93.989		
700.0	697.1	688.2	687.9	1.6	1.4	103.86	250.7	-87.6	273.0	269.9	3.05	89.500		
800.0	795.2	778.1	777.1	2.0	1.7	109.33	256.2	-78.2	283.5	279.8	3.65	77.580		
900.0	893.4	865.1	862.9	2.4	1.9	114.91	263.6	-65.6	299.2	294.9	4.28	69.968		
1,000.0	991.5	949.1	944.9	2.8	2.2	120.33	272.7	-50.3	320.6	315.7	4.90	65.463		
1,100.0	1,089.6	1,029.8	1,023.0	3.2	2.6	125.39	283.1	-32.7	348.0	342.5	5.50	63.223		
1,200.0	1,187.7	1,107.1	1,097.0	3.7	3.0	129.97	294.6	-13.2	381.2	375.2	6.09	62.637 SF		
1,300.0	1,285.9	1,181.2	1,166.8	4.1	3.4	134.04	307.1	7.9	420.0	413.3	6.65	63.142		
1,400.0	1,384.0	1,258.2	1,238.6	4.5	3.9	137.88	321.3	32.0	463.5	456.3	7.20	64.346		
1,500.0	1,482.1	1,342.4	1,316.8	5.0	4.5	141.47	337.1	58.7	509.4	501.6	7.73	65.892		
1,600.0	1,580.2	1,426.5	1,395.0	5.4	5.0	144.51	352.9	85.4	556.7	548.5	8.24	67.585		
1,700.0	1,678.4	1,510.6	1,473.2	5.8	5.7	147.11	368.7	112.1	605.2	596.4	8.72	69.364		
1,800.0	1,776.5	1,594.8	1,551.5	6.2	6.3	149.34	384.4	138.8	654.5	645.3	9.20	71.119		
1,900.0	1,874.6	1,678.9	1,629.7	6.7	6.9	151.28	400.2	165.5	704.5	694.9	9.68	72.817		
2,000.0	1,972.7	1,763.1	1,707.9	7.1	7.5	152.97	416.0	192.2	755.1	745.0	10.14	74.448		

<b>Company:</b>	Caerus Oil and Gas LLC	<b>Local Co-ordinate Reference:</b>	Well NPR 23C-15 596
<b>Project:</b>	SEC.15-T5S-R96W	<b>TVD Reference:</b>	WELL @ 6453.0ft (Original Well Elev)
<b>Reference Site:</b>	NPR H15 596 North Pad Sec.15-T5S-R96W	<b>MD Reference:</b>	WELL @ 6453.0ft (Original Well Elev)
<b>Site Error:</b>	0.0 ft	<b>North Reference:</b>	True
<b>Reference Well:</b>	NPR 23C-15 596	<b>Survey Calculation Method:</b>	Minimum Curvature
<b>Well Error:</b>	0.0 ft	<b>Output errors are at</b>	2.00 sigma
<b>Reference Wellbore</b>	Wellbore #1	<b>Database:</b>	US_EDM
<b>Reference Design:</b>	Plan #2 (6-14-18)	<b>Offset TVD Reference:</b>	Offset Datum

<b>Offset Design</b> NPR H15 596 South Pad Sec.15-T5S-R96W - NPR 15B-11 596 - Wellbore #1 - Plan #1 (11-30-17)												Offset Site Error:	0.0 ft
Survey Program: 0-MWD												Offset Well Error:	0.0 ft
Reference	Offset	Semi Major Axis		Distance									
Measured Depth (ft)	Vertical Depth (ft)	Measured Depth (ft)	Vertical Depth (ft)	Reference (ft)	Offset (ft)	Highside Toolface (°)	Offset Wellbore Centre +N/-S (ft)	+E/-W (ft)	Between Centres (ft)	Between Ellipses (ft)	Minimum Separation (ft)	Separation Factor	Warning
0.0	0.0	0.0	0.0	0.0	0.0	-21.58	294.1	-116.3	316.3				
100.0	100.0	100.0	100.0	0.1	0.1	-21.58	294.1	-116.3	316.3	316.1	0.22	1,407.260	
200.0	200.0	200.0	200.0	0.3	0.3	-21.58	294.1	-116.3	316.3	315.6	0.67	469.087	CC, ES
300.0	300.0	290.8	290.7	0.6	0.5	-21.27	296.0	-115.2	317.8	316.7	1.10	288.090	
400.0	400.0	380.9	380.6	0.8	0.8	94.94	301.5	-111.9	322.4	320.9	1.54	210.007	
500.0	499.6	469.3	468.4	1.0	1.0	97.29	310.4	-106.6	330.9	328.9	2.00	165.643	
600.0	598.8	554.8	552.8	1.3	1.3	100.47	322.3	-99.4	344.4	341.9	2.54	135.843	
670.7	668.3	613.0	609.8	1.5	1.5	103.02	332.3	-93.5	357.6	354.6	2.96	120.659	
700.0	697.1	636.6	632.8	1.6	1.6	104.28	336.7	-90.8	364.0	360.9	3.15	115.506	
800.0	795.2	715.2	709.0	2.0	1.9	108.40	353.4	-80.8	389.6	385.9	3.79	102.768	
900.0	893.4	791.0	781.6	2.4	2.3	112.19	371.9	-69.7	420.9	416.5	4.43	95.013	
1,000.0	991.5	863.8	850.6	2.8	2.8	115.60	392.1	-57.6	457.6	452.5	5.06	90.465	
1,100.0	1,089.6	933.7	915.8	3.2	3.2	118.62	413.5	-44.7	499.2	493.5	5.66	88.156	
1,200.0	1,187.7	1,000.0	976.8	3.7	3.7	121.25	435.7	-31.4	545.3	539.1	6.24	87.382	SF
1,300.0	1,285.9	1,064.5	1,035.3	4.1	4.2	123.58	459.1	-17.4	595.6	588.8	6.81	87.481	
1,400.0	1,384.0	1,125.6	1,089.8	4.5	4.7	125.59	482.8	-3.2	649.5	642.2	7.35	88.336	
1,500.0	1,482.1	1,183.9	1,140.9	5.0	5.3	127.34	506.7	11.1	706.8	698.9	7.88	89.669	
1,600.0	1,580.2	1,239.4	1,188.9	5.4	5.8	128.85	530.8	25.6	767.1	758.7	8.39	91.386	

<b>Company:</b>	Caerus Oil and Gas LLC	<b>Local Co-ordinate Reference:</b>	Well NPR 23C-15 596
<b>Project:</b>	SEC.15-T5S-R96W	<b>TVD Reference:</b>	WELL @ 6453.0ft (Original Well Elev)
<b>Reference Site:</b>	NPR H15 596 North Pad Sec.15-T5S-R96W	<b>MD Reference:</b>	WELL @ 6453.0ft (Original Well Elev)
<b>Site Error:</b>	0.0 ft	<b>North Reference:</b>	True
<b>Reference Well:</b>	NPR 23C-15 596	<b>Survey Calculation Method:</b>	Minimum Curvature
<b>Well Error:</b>	0.0 ft	<b>Output errors are at</b>	2.00 sigma
<b>Reference Wellbore</b>	Wellbore #1	<b>Database:</b>	US_EDM
<b>Reference Design:</b>	Plan #2 (6-14-18)	<b>Offset TVD Reference:</b>	Offset Datum

<b>Offset Design</b> NPR H15 596 South Pad Sec.15-T5S-R96W - NPR 15C-11 596 - Wellbore #1 - Plan #1 (11-30-17)												<b>Offset Site Error:</b>	0.0 ft
Survey Program: 0-MWD												<b>Offset Well Error:</b>	0.0 ft
Reference		Offset		Semi Major Axis			Distance						Warning
Measured Depth (ft)	Vertical Depth (ft)	Measured Depth (ft)	Vertical Depth (ft)	Reference (ft)	Offset (ft)	Highside Toolface (°)	Offset Wellbore Centre +N/-S (ft)	+E/-W (ft)	Between Centres (ft)	Between Ellipses (ft)	Minimum Separation (ft)	Separation Factor	
0.0	0.0	0.0	0.0	0.0	0.0	-21.53	287.3	-113.3	308.8				
100.0	100.0	100.0	100.0	0.1	0.1	-21.53	287.3	-113.3	308.8	308.6	0.22	1,373.892	
200.0	200.0	200.0	200.0	0.3	0.3	-21.53	287.3	-113.3	308.8	308.1	0.67	457.964	
300.0	300.0	300.0	300.0	0.6	0.6	-21.53	287.3	-113.3	308.8	307.7	1.12	274.778 CC, ES	
400.0	400.0	391.3	391.3	0.8	0.8	94.22	289.1	-112.1	310.4	308.8	1.54	201.688	
500.0	499.6	481.3	481.1	1.0	1.0	96.30	294.4	-108.6	315.4	313.4	1.98	159.489	
600.0	598.8	569.0	568.1	1.3	1.2	99.45	303.0	-102.9	324.9	322.4	2.49	130.614	
670.7	668.3	628.9	627.2	1.5	1.4	102.12	310.8	-97.8	335.0	332.1	2.90	115.497	
700.0	697.1	653.2	651.2	1.6	1.5	103.42	314.5	-95.4	340.1	337.0	3.08	110.372	
800.0	795.2	734.5	730.8	2.0	1.8	107.74	328.4	-86.3	361.3	357.5	3.71	97.339	
900.0	893.4	813.0	806.9	2.4	2.1	111.80	344.4	-75.7	388.1	383.8	4.34	89.358	
1,000.0	991.5	888.6	879.4	2.8	2.5	115.51	362.4	-63.8	420.5	415.6	4.97	84.670	
1,100.0	1,089.6	961.3	948.2	3.2	2.9	118.84	381.9	-51.0	458.2	452.6	5.58	82.186	
1,200.0	1,187.7	1,031.0	1,013.3	3.7	3.4	121.77	402.7	-37.3	500.7	494.5	6.16	81.289 SF	
1,300.0	1,285.9	1,100.0	1,076.8	4.1	3.8	124.42	425.1	-22.5	547.6	540.8	6.73	81.416	
1,400.0	1,384.0	1,161.5	1,132.6	4.5	4.3	126.57	446.8	-8.3	598.5	591.2	7.27	82.363	
1,500.0	1,482.1	1,222.4	1,187.0	5.0	4.8	128.51	469.7	6.8	653.0	645.2	7.80	83.757	
1,600.0	1,580.2	1,280.5	1,238.0	5.4	5.3	130.19	492.9	22.1	710.7	702.4	8.31	85.539	
1,700.0	1,678.4	1,335.9	1,285.8	5.8	5.9	131.65	516.2	37.4	771.4	762.6	8.80	87.622	



<b>Company:</b>	Caerus Oil and Gas LLC	<b>Local Co-ordinate Reference:</b>	Well NPR 23C-15 596
<b>Project:</b>	SEC.15-T5S-R96W	<b>TVD Reference:</b>	WELL @ 6453.0ft (Original Well Elev)
<b>Reference Site:</b>	NPR H15 596 North Pad Sec.15-T5S-R96W	<b>MD Reference:</b>	WELL @ 6453.0ft (Original Well Elev)
<b>Site Error:</b>	0.0 ft	<b>North Reference:</b>	True
<b>Reference Well:</b>	NPR 23C-15 596	<b>Survey Calculation Method:</b>	Minimum Curvature
<b>Well Error:</b>	0.0 ft	<b>Output errors are at</b>	2.00 sigma
<b>Reference Wellbore</b>	Wellbore #1	<b>Database:</b>	US_EDM
<b>Reference Design:</b>	Plan #2 (6-14-18)	<b>Offset TVD Reference:</b>	Offset Datum

Offset Design													Offset Site Error:	0.0 ft
Survey Program: 0-MWD													Offset Well Error:	0.0 ft
Reference		Offset		Semi Major Axis			Distance						Warning	
Measured Depth (ft)	Vertical Depth (ft)	Measured Depth (ft)	Vertical Depth (ft)	Reference (ft)	Offset (ft)	Highside Toolface (°)	Offset Wellbore Centre +N/-S (ft)	+E/-W (ft)	Between Centres (ft)	Between Ellipses (ft)	Minimum Separation (ft)	Separation Factor		
0.0	0.0	0.0	0.0	0.0	0.0	-21.49	280.3	-110.4	301.3					
100.0	100.0	100.0	100.0	0.1	0.1	-21.49	280.3	-110.4	301.3	301.1	0.22	1,340.419		
200.0	200.0	200.0	200.0	0.3	0.3	-21.49	280.3	-110.4	301.3	300.6	0.67	446.806		
300.0	300.0	300.0	300.0	0.6	0.6	-21.49	280.3	-110.4	301.3	300.2	1.12	268.084 CC		
400.0	400.0	400.0	400.0	0.8	0.8	94.03	280.3	-110.4	301.5	299.9	1.56	193.532 ES		
500.0	499.6	491.4	491.4	1.0	1.0	95.67	282.1	-109.1	303.5	301.5	1.98	152.879		
600.0	598.8	581.0	580.7	1.3	1.2	98.62	287.2	-105.3	309.4	306.9	2.47	125.019		
670.7	668.3	642.4	641.8	1.5	1.4	101.30	292.7	-101.3	316.6	313.7	2.87	110.205		
700.0	697.1	667.5	666.6	1.6	1.4	102.60	295.4	-99.3	320.5	317.4	3.05	105.204		
800.0	795.2	751.3	749.4	2.0	1.7	107.02	306.3	-91.4	337.2	333.5	3.66	92.149		
900.0	893.4	832.5	828.8	2.4	2.0	111.29	319.7	-81.6	359.5	355.3	4.28	83.964		
1,000.0	991.5	910.9	904.8	2.8	2.3	115.28	335.2	-70.3	387.5	382.6	4.90	79.129		
1,100.0	1,089.6	986.4	977.2	3.2	2.6	118.91	352.4	-57.7	421.0	415.5	5.50	76.529		
1,200.0	1,187.7	1,058.9	1,045.9	3.7	3.1	122.15	371.2	-43.9	459.6	453.5	6.09	75.491 SF		
1,300.0	1,285.9	1,128.5	1,110.9	4.1	3.5	125.00	391.1	-29.4	502.8	496.2	6.65	75.613		
1,400.0	1,384.0	1,200.0	1,176.8	4.5	4.0	127.66	413.6	-12.9	550.4	543.2	7.20	76.420		
1,500.0	1,482.1	1,258.6	1,230.0	5.0	4.4	129.65	433.5	1.6	601.9	594.2	7.72	78.003		
1,600.0	1,580.2	1,319.3	1,284.2	5.4	4.9	131.53	455.5	17.7	656.9	648.7	8.23	79.819		
1,700.0	1,678.4	1,377.2	1,335.2	5.8	5.4	133.16	477.8	34.0	715.1	706.4	8.73	81.950		
1,800.0	1,776.5	1,432.4	1,382.9	6.2	5.9	134.57	500.2	50.4	776.2	767.0	9.21	84.290		

<b>Company:</b>	Caerus Oil and Gas LLC	<b>Local Co-ordinate Reference:</b>	Well NPR 23C-15 596
<b>Project:</b>	SEC.15-T5S-R96W	<b>TVD Reference:</b>	WELL @ 6453.0ft (Original Well Elev)
<b>Reference Site:</b>	NPR H15 596 North Pad Sec.15-T5S-R96W	<b>MD Reference:</b>	WELL @ 6453.0ft (Original Well Elev)
<b>Site Error:</b>	0.0 ft	<b>North Reference:</b>	True
<b>Reference Well:</b>	NPR 23C-15 596	<b>Survey Calculation Method:</b>	Minimum Curvature
<b>Well Error:</b>	0.0 ft	<b>Output errors are at</b>	2.00 sigma
<b>Reference Wellbore</b>	Wellbore #1	<b>Database:</b>	US_EDM
<b>Reference Design:</b>	Plan #2 (6-14-18)	<b>Offset TVD Reference:</b>	Offset Datum

Offset Design													Offset Site Error:	0.0 ft
Survey Program: 0-MWD													Offset Well Error:	0.0 ft
Reference		Offset		Semi Major Axis			Distance							Warning
Measured Depth (ft)	Vertical Depth (ft)	Measured Depth (ft)	Vertical Depth (ft)	Reference (ft)	Offset (ft)	Highside Toolface (°)	Offset Wellbore Centre +N/-S (ft)	+E/-W (ft)	Between Centres (ft)	Between Ellipses (ft)	Minimum Separation (ft)	Separation Factor		
0.0	0.0	0.0	0.0	0.0	0.0	-23.41	276.4	-119.6	301.1					
100.0	100.0	100.0	100.0	0.1	0.1	-23.41	276.4	-119.6	301.1	300.9	0.22	1,339.793		
200.0	200.0	200.0	200.0	0.3	0.3	-23.41	276.4	-119.6	301.1	300.5	0.67	446.598		
300.0	300.0	300.0	300.0	0.6	0.6	-23.41	276.4	-119.6	301.1	300.0	1.12	267.959 CC		
400.0	400.0	400.0	400.0	0.8	0.8	92.12	276.4	-119.6	301.2	299.7	1.56	193.408 ES		
500.0	499.6	486.0	486.0	1.0	1.0	93.30	278.1	-120.5	303.9	301.9	1.97	153.894		
600.0	598.8	571.3	571.1	1.3	1.2	95.04	283.3	-123.0	311.6	309.1	2.46	126.900		
670.7	668.3	630.8	630.2	1.5	1.3	96.52	288.9	-125.7	320.3	317.5	2.84	112.684		
700.0	697.1	655.3	654.5	1.6	1.4	97.27	291.7	-127.1	324.7	321.7	3.01	107.752		
800.0	795.2	738.1	736.3	2.0	1.6	99.63	303.2	-132.7	343.0	339.4	3.61	94.979		
900.0	893.4	819.6	816.3	2.4	1.9	101.61	317.6	-139.8	366.1	361.8	4.23	86.611		
1,000.0	991.5	900.0	894.3	2.8	2.2	103.22	334.8	-148.2	393.5	388.7	4.85	81.082		
1,100.0	1,089.6	978.1	969.3	3.2	2.6	104.46	354.3	-157.8	425.0	419.6	5.49	77.386		
1,200.0	1,187.7	1,054.5	1,041.7	3.7	3.0	105.41	376.1	-168.5	460.4	454.3	6.14	74.963		
1,300.0	1,285.9	1,128.8	1,111.2	4.1	3.5	106.10	399.7	-180.0	499.3	492.5	6.80	73.446		
1,400.0	1,384.0	1,200.0	1,176.8	4.5	4.0	106.56	424.6	-192.3	541.6	534.1	7.46	72.617		
1,500.0	1,482.1	1,271.2	1,241.3	5.0	4.6	106.87	451.8	-205.5	587.0	578.9	8.14	72.108		
1,600.0	1,580.2	1,359.6	1,320.7	5.4	5.3	107.15	486.6	-222.6	633.8	625.0	8.88	71.360		
1,700.0	1,678.4	1,447.9	1,400.0	5.8	6.0	107.39	521.4	-239.6	680.7	671.1	9.62	70.761		
1,800.0	1,776.5	1,536.2	1,479.4	6.2	6.8	107.60	556.2	-256.7	727.6	717.2	10.37	70.155		
1,900.0	1,874.6	1,624.5	1,558.7	6.7	7.5	107.78	591.1	-273.8	774.4	763.3	11.13	69.575 SF		

Offset Design		NPR H15 596 South Pad Sec.15-T5S-R96W - NPR 21B-15 596 - Wellbore #1 - Plan #1 (11-30-17)											Offset Site Error:		0.0 ft
Survey Program:		0-MWVD											Offset Well Error:		0.0 ft
Reference		Offset		Semi Major Axis			Distance						Warning		
Measured Depth	Vertical Depth	Measured Depth	Vertical Depth	Reference	Offset	Highside Toolface	Offset Wellbore Centre		Between Centres	Between Ellipses	Minimum Separation	Separation Factor			
(ft)	(ft)	(ft)	(ft)	(ft)	(ft)	(°)	+N/-S (ft)	+E/-W (ft)	(ft)	(ft)	(ft)				
0.0	0.0	0.0	0.0	0.0	0.0	-23.40	269.5	-116.6	293.7						
100.0	100.0	100.0	100.0	0.1	0.1	-23.40	269.5	-116.6	293.7	293.4	0.22	1,306.505			
200.0	200.0	200.0	200.0	0.3	0.3	-23.40	269.5	-116.6	293.7	293.0	0.67	435.502			
300.0	300.0	300.0	300.0	0.6	0.6	-23.40	269.5	-116.6	293.7	292.5	1.12	261.301	CC		
400.0	400.0	400.0	400.0	0.8	0.8	92.14	269.5	-116.6	293.7	292.2	1.56	188.604			
500.0	499.6	499.6	499.6	1.0	1.0	93.66	269.5	-116.6	294.1	292.1	2.00	146.874	ES		
600.0	598.8	585.7	585.6	1.3	1.2	95.67	271.2	-117.6	297.4	295.0	2.47	120.268			
670.7	668.3	645.9	645.8	1.5	1.3	97.36	274.4	-119.3	303.1	300.3	2.85	106.186			
700.0	697.1	670.8	670.5	1.6	1.4	98.18	276.2	-120.3	306.3	303.3	3.02	101.333			
800.0	795.2	755.1	754.3	2.0	1.6	100.71	284.3	-124.9	320.5	316.8	3.62	88.632			
900.0	893.4	838.5	836.8	2.4	1.8	102.84	295.6	-131.3	339.4	335.2	4.22	80.347			
1,000.0	991.5	920.8	917.4	2.8	2.1	104.53	309.8	-139.2	362.9	358.0	4.84	74.898			
1,100.0	1,089.6	1,000.0	994.3	3.2	2.4	105.81	326.2	-148.5	390.5	385.0	5.47	71.376			
1,200.0	1,187.7	1,080.8	1,071.9	3.7	2.8	106.77	345.9	-159.6	422.0	415.8	6.12	68.918			
1,300.0	1,285.9	1,158.0	1,145.0	4.1	3.2	107.40	367.3	-171.6	457.1	450.3	6.78	67.392			
1,400.0	1,384.0	1,233.1	1,215.3	4.5	3.7	107.78	390.7	-184.8	495.6	488.2	7.45	66.503			
1,500.0	1,482.1	1,309.4	1,285.4	5.0	4.2	107.98	416.7	-199.4	537.3	529.2	8.15	65.912			
1,600.0	1,580.2	1,399.8	1,368.1	5.4	4.9	108.13	448.5	-217.3	580.1	571.2	8.89	65.268			
1,700.0	1,678.4	1,490.1	1,450.8	5.8	5.6	108.26	480.3	-235.2	622.9	613.3	9.64	64.617			
1,800.0	1,776.5	1,580.5	1,533.5	6.2	6.3	108.37	512.0	-253.0	665.7	655.3	10.40	63.995			
1,900.0	1,874.6	1,670.9	1,616.2	6.7	7.0	108.47	543.8	-270.9	708.5	697.4	11.17	63.408			
2,000.0	1,972.7	1,761.2	1,698.9	7.1	7.7	108.56	575.6	-288.8	751.3	739.4	11.95	62.858			
2,100.0	2,070.8	1,851.6	1,781.6	7.6	8.4	108.64	607.3	-306.7	794.1	781.4	12.74	62.346	SF		

<b>Company:</b>	Caerus Oil and Gas LLC	<b>Local Co-ordinate Reference:</b>	Well NPR 23C-15 596
<b>Project:</b>	SEC.15-T5S-R96W	<b>TVD Reference:</b>	WELL @ 6453.0ft (Original Well Elev)
<b>Reference Site:</b>	NPR H15 596 North Pad Sec.15-T5S-R96W	<b>MD Reference:</b>	WELL @ 6453.0ft (Original Well Elev)
<b>Site Error:</b>	0.0 ft	<b>North Reference:</b>	True
<b>Reference Well:</b>	NPR 23C-15 596	<b>Survey Calculation Method:</b>	Minimum Curvature
<b>Well Error:</b>	0.0 ft	<b>Output errors are at</b>	2.00 sigma
<b>Reference Wellbore</b>	Wellbore #1	<b>Database:</b>	US_EDM
<b>Reference Design:</b>	Plan #2 (6-14-18)	<b>Offset TVD Reference:</b>	Offset Datum

Offset Design													Offset Site Error:	0.0 ft
Survey Program: 0-MWD													Offset Well Error:	0.0 ft
Reference		Offset		Semi Major Axis			Distance							Warning
Measured Depth (ft)	Vertical Depth (ft)	Measured Depth (ft)	Vertical Depth (ft)	Reference (ft)	Offset (ft)	Highside Toolface (°)	Offset Wellbore Centre +N/-S (ft)	+E/-W (ft)	Between Centres (ft)	Between Ellipses (ft)	Minimum Separation (ft)	Separation Factor		
0.0	0.0	0.0	0.0	0.0	0.0	-23.39	262.6	-113.6	286.1					
100.0	100.0	100.0	100.0	0.1	0.1	-23.39	262.6	-113.6	286.1	285.9	0.22	1,273.068		
200.0	200.0	200.0	200.0	0.3	0.3	-23.39	262.6	-113.6	286.1	285.5	0.67	424.356	CC, ES	
300.0	300.0	296.1	296.1	0.6	0.5	-23.69	262.6	-115.2	286.8	285.7	1.11	259.208		
400.0	400.0	388.2	388.0	0.8	0.8	90.96	263.0	-119.7	289.2	287.7	1.52	189.978		
500.0	499.6	474.7	474.2	1.0	1.0	91.26	266.3	-125.8	295.7	293.8	1.96	150.869		
600.0	598.8	560.2	559.2	1.3	1.2	92.21	273.1	-133.5	307.0	304.5	2.47	124.468		
670.7	668.3	619.8	618.1	1.5	1.4	93.19	279.8	-139.8	317.9	315.0	2.87	110.836		
700.0	697.1	644.3	642.2	1.6	1.5	93.78	283.1	-142.6	323.1	320.1	3.05	106.016		
800.0	795.2	727.0	723.2	2.0	1.8	95.60	296.1	-153.0	344.1	340.4	3.68	93.534		
900.0	893.4	808.1	801.8	2.4	2.1	97.12	312.0	-164.7	369.5	365.2	4.33	85.305		
1,000.0	991.5	887.5	877.9	2.8	2.5	98.36	330.5	-177.5	399.2	394.2	5.00	79.795		
1,100.0	1,089.6	970.1	956.1	3.2	3.0	99.39	352.7	-192.2	432.9	427.2	5.71	75.844		
1,200.0	1,187.7	1,056.7	1,037.4	3.7	3.6	100.27	377.7	-208.3	468.7	462.3	6.42	72.984		
1,300.0	1,285.9	1,149.8	1,124.9	4.1	4.2	101.09	404.5	-225.7	504.7	497.5	7.16	70.515		
1,400.0	1,384.0	1,242.8	1,212.3	4.5	4.8	101.80	431.3	-243.0	540.8	532.9	7.91	68.369		
1,500.0	1,482.1	1,335.9	1,299.7	5.0	5.4	102.42	458.1	-260.4	576.9	568.2	8.67	66.547		
1,600.0	1,580.2	1,429.0	1,387.1	5.4	6.1	102.97	484.9	-277.7	613.1	603.7	9.44	64.961		
1,700.0	1,678.4	1,522.0	1,474.5	5.8	6.7	103.45	511.8	-295.1	649.3	639.1	10.21	63.576		
1,800.0	1,776.5	1,615.1	1,562.0	6.2	7.4	103.89	538.6	-312.4	685.6	674.6	10.99	62.359		
1,900.0	1,874.6	1,708.2	1,649.4	6.7	8.0	104.28	565.4	-329.8	721.9	710.1	11.78	61.282		
2,000.0	1,972.7	1,801.3	1,736.8	7.1	8.6	104.64	592.2	-347.1	758.2	745.6	12.57	60.323		
2,100.0	2,070.8	1,894.3	1,824.2	7.6	9.3	104.96	619.0	-364.5	794.6	781.2	13.36	59.465	SF	

<b>Company:</b>	Caerus Oil and Gas LLC	<b>Local Co-ordinate Reference:</b>	Well NPR 23C-15 596
<b>Project:</b>	SEC.15-T5S-R96W	<b>TVD Reference:</b>	WELL @ 6453.0ft (Original Well Elev)
<b>Reference Site:</b>	NPR H15 596 North Pad Sec.15-T5S-R96W	<b>MD Reference:</b>	WELL @ 6453.0ft (Original Well Elev)
<b>Site Error:</b>	0.0 ft	<b>North Reference:</b>	True
<b>Reference Well:</b>	NPR 23C-15 596	<b>Survey Calculation Method:</b>	Minimum Curvature
<b>Well Error:</b>	0.0 ft	<b>Output errors are at</b>	2.00 sigma
<b>Reference Wellbore</b>	Wellbore #1	<b>Database:</b>	US_EDM
<b>Reference Design:</b>	Plan #2 (6-14-18)	<b>Offset TVD Reference:</b>	Offset Datum

Offset Design													Offset Site Error:		0.0 ft
Survey Program: 0-MWD													Offset Well Error:		0.0 ft
Reference		Offset		Semi Major Axis			Distance							Warning	
Measured Depth	Vertical Depth	Measured Depth	Vertical Depth	Reference	Offset	Highside Toolface	Offset Wellbore Centre		Between Centres	Between Ellipses	Minimum Separation	Separation Factor			
(ft)	(ft)	(ft)	(ft)	(ft)	(ft)	(°)	+N/-S (ft)	+E/-W (ft)	(ft)	(ft)	(ft)				
0.0	0.0	0.0	0.0	0.0	0.0	-23.40	255.7	-110.6	278.6						
100.0	100.0	100.0	100.0	0.1	0.1	-23.40	255.7	-110.6	278.6	278.4	0.22	1,239.582			
200.0	200.0	200.0	200.0	0.3	0.3	-23.40	255.7	-110.6	278.6	277.9	0.67	413.194			
300.0	300.0	300.0	300.0	0.6	0.6	-23.40	255.7	-110.6	278.6	277.5	1.12	247.916	CC, ES		
400.0	400.0	396.3	396.3	0.8	0.8	91.83	255.7	-112.3	279.4	277.8	1.54	181.570			
500.0	499.6	488.5	488.4	1.0	1.0	92.39	256.0	-116.8	281.9	280.0	1.96	143.571			
600.0	598.8	575.2	574.7	1.3	1.2	93.51	259.3	-123.2	288.8	286.4	2.45	117.666			
670.7	668.3	635.8	634.9	1.5	1.4	94.61	263.5	-128.8	296.7	293.9	2.85	103.948			
700.0	697.1	660.8	659.7	1.6	1.4	95.22	265.8	-131.4	300.8	297.8	3.03	99.189			
800.0	795.2	745.3	743.1	2.0	1.7	97.06	275.4	-141.4	317.6	313.9	3.66	86.821			
900.0	893.4	828.7	824.6	2.4	2.0	98.55	288.1	-153.0	338.9	334.6	4.31	78.647			
1,000.0	991.5	910.5	903.9	2.8	2.3	99.70	303.5	-166.1	364.5	359.5	4.98	73.212			
1,100.0	1,089.6	991.9	981.9	3.2	2.8	100.55	321.8	-180.7	394.2	388.5	5.67	69.507			
1,200.0	1,187.7	1,085.0	1,070.5	3.7	3.3	101.32	344.4	-198.5	425.9	419.4	6.41	66.440			
1,300.0	1,285.9	1,179.7	1,160.6	4.1	3.8	101.99	367.3	-216.5	457.6	450.5	7.15	63.964			
1,400.0	1,384.0	1,274.4	1,250.6	4.5	4.4	102.58	390.3	-234.5	489.4	481.5	7.91	61.851			
1,500.0	1,482.1	1,369.1	1,340.7	5.0	5.0	103.09	413.2	-252.5	521.3	512.6	8.68	60.043			
1,600.0	1,580.2	1,463.8	1,430.8	5.4	5.6	103.55	436.2	-270.5	553.1	543.7	9.46	58.484			
1,700.0	1,678.4	1,558.5	1,520.9	5.8	6.1	103.95	459.1	-288.5	585.0	574.8	10.24	57.126			
1,800.0	1,776.5	1,653.2	1,611.0	6.2	6.7	104.32	482.1	-306.6	617.0	605.9	11.03	55.936			
1,900.0	1,874.6	1,747.9	1,701.1	6.7	7.3	104.65	505.0	-324.6	648.9	637.1	11.82	54.887			
2,000.0	1,972.7	1,842.6	1,791.2	7.1	7.9	104.94	527.9	-342.6	680.9	668.3	12.62	53.955			
2,100.0	2,070.8	1,937.3	1,881.3	7.6	8.5	105.21	550.9	-360.6	712.9	699.4	13.42	53.122			
2,200.0	2,169.0	2,032.0	1,971.4	8.0	9.1	105.46	573.8	-378.6	744.9	730.6	14.22	52.375			
2,300.0	2,267.1	2,126.7	2,061.5	8.4	9.7	105.69	596.8	-396.7	776.9	761.8	15.03	51.701	SF		

<b>Company:</b>	Caerus Oil and Gas LLC	<b>Local Co-ordinate Reference:</b>	Well NPR 23C-15 596
<b>Project:</b>	SEC.15-T5S-R96W	<b>TVD Reference:</b>	WELL @ 6453.0ft (Original Well Elev)
<b>Reference Site:</b>	NPR H15 596 North Pad Sec.15-T5S-R96W	<b>MD Reference:</b>	WELL @ 6453.0ft (Original Well Elev)
<b>Site Error:</b>	0.0 ft	<b>North Reference:</b>	True
<b>Reference Well:</b>	NPR 23C-15 596	<b>Survey Calculation Method:</b>	Minimum Curvature
<b>Well Error:</b>	0.0 ft	<b>Output errors are at</b>	2.00 sigma
<b>Reference Wellbore</b>	Wellbore #1	<b>Database:</b>	US_EDM
<b>Reference Design:</b>	Plan #2 (6-14-18)	<b>Offset TVD Reference:</b>	Offset Datum

Offset Design													Offset Site Error:	0.0 ft
Survey Program: 0-MWD													Offset Well Error:	0.0 ft
Reference		Offset		Semi Major Axis			Distance							Warning
Measured Depth (ft)	Vertical Depth (ft)	Measured Depth (ft)	Vertical Depth (ft)	Reference (ft)	Offset (ft)	Highside Toolface (°)	Offset Wellbore Centre +N/-S (ft)	+E/-W (ft)	Between Centres (ft)	Between Ellipses (ft)	Minimum Separation (ft)	Separation Factor		
0.0	0.0	0.0	0.0	0.0	0.0	-23.39	248.9	-107.7	271.2					
100.0	100.0	100.0	100.0	0.1	0.1	-23.39	248.9	-107.7	271.2	271.0	0.22	1,206.542		
200.0	200.0	200.0	200.0	0.3	0.3	-23.39	248.9	-107.7	271.2	270.5	0.67	402.181		
300.0	300.0	300.0	300.0	0.6	0.6	-23.39	248.9	-107.7	271.2	270.1	1.12	241.308 CC		
400.0	400.0	400.0	400.0	0.8	0.8	92.19	248.9	-107.7	271.3	269.7	1.56	174.179 ES		
500.0	499.6	496.3	496.3	1.0	1.0	93.44	248.9	-109.3	272.3	270.3	1.98	137.247		
600.0	598.8	589.1	588.9	1.3	1.2	94.98	249.2	-113.9	275.4	272.9	2.46	111.864		
670.7	668.3	651.2	650.9	1.5	1.3	96.22	250.7	-118.9	280.1	277.3	2.85	98.172		
700.0	697.1	677.0	676.5	1.6	1.4	96.81	251.7	-121.4	282.8	279.8	3.03	93.446		
800.0	795.2	764.5	763.2	2.0	1.7	98.50	257.0	-131.7	294.7	291.0	3.65	80.707		
900.0	893.4	851.4	848.7	2.4	1.9	99.65	264.9	-144.8	310.6	306.3	4.31	72.026		
1,000.0	991.5	937.3	932.5	2.8	2.3	100.30	275.3	-160.6	330.4	325.4	5.01	65.984		
1,100.0	1,089.6	1,021.9	1,014.2	3.2	2.6	100.52	288.0	-178.8	353.8	348.1	5.73	61.714		
1,200.0	1,187.7	1,105.0	1,093.3	3.7	3.1	100.39	302.9	-199.3	380.8	374.3	6.49	58.679		
1,300.0	1,285.9	1,198.7	1,181.7	4.1	3.7	100.05	321.4	-224.1	409.9	402.6	7.31	56.060		
1,400.0	1,384.0	1,294.3	1,271.9	4.5	4.3	99.74	340.3	-249.5	439.1	430.9	8.15	53.883		
1,500.0	1,482.1	1,389.9	1,362.2	5.0	4.9	99.47	359.2	-274.9	468.3	459.3	9.00	52.046		
1,600.0	1,580.2	1,485.5	1,452.4	5.4	5.5	99.24	378.0	-300.3	497.5	487.6	9.85	50.489		
1,700.0	1,678.4	1,581.2	1,542.6	5.8	6.1	99.03	396.9	-325.7	526.7	515.9	10.71	49.156		
1,800.0	1,776.5	1,676.8	1,632.9	6.2	6.8	98.84	415.8	-351.1	555.9	544.3	11.58	48.004		
1,900.0	1,874.6	1,772.4	1,723.1	6.7	7.4	98.67	434.7	-376.5	585.1	572.6	12.45	47.002		
2,000.0	1,972.7	1,868.0	1,813.3	7.1	8.1	98.51	453.5	-401.9	614.3	601.0	13.32	46.122		
2,100.0	2,070.8	1,963.7	1,903.6	7.6	8.7	98.37	472.4	-427.3	643.5	629.3	14.19	45.345		
2,200.0	2,169.0	2,059.3	1,993.8	8.0	9.4	98.25	491.3	-452.7	672.8	657.7	15.07	44.654		
2,300.0	2,267.1	2,154.9	2,084.0	8.4	10.0	98.13	510.2	-478.1	702.0	686.1	15.94	44.036		
2,400.0	2,365.2	2,250.5	2,174.3	8.9	10.7	98.02	529.1	-503.6	731.2	714.4	16.82	43.480		
2,500.0	2,463.3	2,346.1	2,264.5	9.3	11.3	97.92	547.9	-529.0	760.5	742.8	17.69	42.978		
2,600.0	2,561.5	2,441.8	2,354.7	9.7	12.0	97.83	566.8	-554.4	789.7	771.1	18.57	42.522 SF		

<b>Company:</b>	Caerus Oil and Gas LLC	<b>Local Co-ordinate Reference:</b>	Well NPR 23C-15 596
<b>Project:</b>	SEC.15-T5S-R96W	<b>TVD Reference:</b>	WELL @ 6453.0ft (Original Well Elev)
<b>Reference Site:</b>	NPR H15 596 North Pad Sec.15-T5S-R96W	<b>MD Reference:</b>	WELL @ 6453.0ft (Original Well Elev)
<b>Site Error:</b>	0.0 ft	<b>North Reference:</b>	True
<b>Reference Well:</b>	NPR 23C-15 596	<b>Survey Calculation Method:</b>	Minimum Curvature
<b>Well Error:</b>	0.0 ft	<b>Output errors are at</b>	2.00 sigma
<b>Reference Wellbore</b>	Wellbore #1	<b>Database:</b>	US_EDM
<b>Reference Design:</b>	Plan #2 (6-14-18)	<b>Offset TVD Reference:</b>	Offset Datum

Offset Design													Offset Site Error:	0.0 ft
Survey Program: 0-MWD													Offset Well Error:	0.0 ft
Reference		Offset		Semi Major Axis			Distance						Warning	
Measured Depth (ft)	Vertical Depth (ft)	Measured Depth (ft)	Vertical Depth (ft)	Reference (ft)	Offset (ft)	Highside Toolface (°)	Offset Wellbore Centre +N/-S (ft)	+E/-W (ft)	Between Centres (ft)	Between Ellipses (ft)	Minimum Separation (ft)	Separation Factor		
0.0	0.0	0.0	0.0	0.0	0.0	-23.36	241.7	-104.4	263.3					
100.0	100.0	100.0	100.0	0.1	0.1	-23.36	241.7	-104.4	263.3	263.0	0.22	1,171.319		
200.0	200.0	200.0	200.0	0.3	0.3	-23.36	241.7	-104.4	263.3	262.6	0.67	390.440		
300.0	300.0	300.0	300.0	0.6	0.6	-23.36	241.7	-104.4	263.3	262.1	1.12	234.264 CC		
400.0	400.0	400.0	400.0	0.8	0.8	92.24	241.7	-104.4	263.4	261.8	1.56	169.096		
500.0	499.6	499.6	499.6	1.0	1.0	93.92	241.7	-104.4	263.8	261.8	2.00	131.711 ES		
600.0	598.8	595.9	595.9	1.3	1.2	96.25	241.7	-106.0	265.5	263.0	2.48	106.934		
670.7	668.3	663.0	662.9	1.5	1.4	98.06	241.7	-109.1	268.1	265.2	2.86	93.645		
700.0	697.1	689.2	689.1	1.6	1.4	98.80	241.9	-110.7	269.7	266.7	3.03	89.018		
800.0	795.2	778.8	778.2	2.0	1.6	100.89	244.1	-118.7	277.7	274.1	3.63	76.483		
900.0	893.4	868.2	866.8	2.4	1.9	102.28	248.6	-130.1	289.5	285.2	4.27	67.760		
1,000.0	991.5	957.2	954.3	2.8	2.2	102.99	255.3	-144.9	304.6	299.7	4.95	61.527		
1,100.0	1,089.6	1,045.3	1,040.1	3.2	2.5	103.11	264.2	-162.8	323.0	317.4	5.67	56.954		
1,200.0	1,187.7	1,132.3	1,123.8	3.7	2.9	102.73	275.1	-183.8	344.6	338.2	6.43	53.570		
1,300.0	1,285.9	1,224.3	1,211.3	4.1	3.4	101.97	288.5	-208.7	368.8	361.5	7.26	50.798		
1,400.0	1,384.0	1,321.1	1,303.3	4.5	4.0	101.23	302.9	-235.3	393.4	385.3	8.12	48.453		
1,500.0	1,482.1	1,417.9	1,395.3	5.0	4.5	100.57	317.2	-261.8	418.0	409.0	8.99	46.484		
1,600.0	1,580.2	1,514.7	1,487.3	5.4	5.1	99.99	331.6	-288.4	442.7	432.8	9.87	44.835		
1,700.0	1,678.4	1,611.6	1,579.3	5.8	5.7	99.47	345.9	-314.9	467.4	456.6	10.76	43.437		
1,800.0	1,776.5	1,708.4	1,671.3	6.2	6.3	99.00	360.3	-341.5	492.1	480.5	11.65	42.241		
1,900.0	1,874.6	1,805.2	1,763.3	6.7	7.0	98.58	374.6	-368.1	516.9	504.4	12.54	41.210		
2,000.0	1,972.7	1,902.0	1,855.3	7.1	7.6	98.19	389.0	-394.6	541.7	528.3	13.44	40.313		
2,100.0	2,070.8	1,998.8	1,947.2	7.6	8.2	97.84	403.3	-421.2	566.5	552.2	14.33	39.527		
2,200.0	2,169.0	2,095.6	2,039.2	8.0	8.8	97.52	417.7	-447.7	591.4	576.2	15.23	38.833		
2,300.0	2,267.1	2,192.4	2,131.2	8.4	9.4	97.22	432.0	-474.3	616.2	600.1	16.13	38.216		
2,400.0	2,365.2	2,289.3	2,223.2	8.9	10.1	96.95	446.4	-500.9	641.1	624.1	17.02	37.665		
2,500.0	2,463.3	2,386.1	2,315.2	9.3	10.7	96.69	460.7	-527.4	666.0	648.1	17.92	37.170		
2,600.0	2,561.5	2,482.9	2,407.2	9.7	11.3	96.46	475.1	-554.0	690.9	672.1	18.81	36.722		
2,700.0	2,659.6	2,579.7	2,499.2	10.2	11.9	96.24	489.4	-580.5	715.8	696.1	19.71	36.317		
2,800.0	2,757.7	2,676.5	2,591.2	10.6	12.6	96.04	503.8	-607.1	740.7	720.1	20.61	35.947		
2,900.0	2,855.8	2,773.3	2,683.1	11.0	13.2	95.85	518.1	-633.6	765.6	744.1	21.50	35.608		
3,000.0	2,953.9	2,870.1	2,775.1	11.5	13.8	95.67	532.5	-660.2	790.5	768.2	22.40	35.298 SF		

<b>Company:</b>	Caerus Oil and Gas LLC	<b>Local Co-ordinate Reference:</b>	Well NPR 23C-15 596
<b>Project:</b>	SEC.15-T5S-R96W	<b>TVD Reference:</b>	WELL @ 6453.0ft (Original Well Elev)
<b>Reference Site:</b>	NPR H15 596 North Pad Sec.15-T5S-R96W	<b>MD Reference:</b>	WELL @ 6453.0ft (Original Well Elev)
<b>Site Error:</b>	0.0 ft	<b>North Reference:</b>	True
<b>Reference Well:</b>	NPR 23C-15 596	<b>Survey Calculation Method:</b>	Minimum Curvature
<b>Well Error:</b>	0.0 ft	<b>Output errors are at</b>	2.00 sigma
<b>Reference Wellbore</b>	Wellbore #1	<b>Database:</b>	US_EDM
<b>Reference Design:</b>	Plan #2 (6-14-18)	<b>Offset TVD Reference:</b>	Offset Datum

Offset Design													Offset Site Error:		0.0 ft
Survey Program: 0-MWD													Offset Well Error:		0.0 ft
Reference		Offset		Semi Major Axis			Distance						Warning		
Measured Depth	Vertical Depth	Measured Depth	Vertical Depth	Reference	Offset	Highside Toolface	Offset Wellbore Centre		Between Centres	Between Ellipses	Minimum Separation	Separation Factor			
(ft)	(ft)	(ft)	(ft)	(ft)	(ft)	(°)	+N/-S (ft)	+E/-W (ft)	(ft)	(ft)	(ft)				
0.0	0.0	0.0	0.0	0.0	0.0	-23.39	290.2	-125.5	316.2						
100.0	100.0	100.0	100.0	0.1	0.1	-23.39	290.2	-125.5	316.2	316.0	0.22	1,406.715			
200.0	200.0	200.0	200.0	0.3	0.3	-23.39	290.2	-125.5	316.2	315.5	0.67	468.905	CC, ES		
300.0	300.0	285.9	285.8	0.6	0.5	-23.34	292.1	-126.0	318.4	317.3	1.09	291.474			
400.0	400.0	371.3	371.1	0.8	0.7	92.02	297.6	-127.6	325.2	323.6	1.52	214.198			
500.0	499.6	455.7	454.9	1.0	1.0	93.02	306.7	-130.1	336.6	334.7	1.96	171.888			
600.0	598.8	538.4	536.6	1.3	1.2	94.52	319.0	-133.5	353.1	350.6	2.45	143.856			
670.7	668.3	600.0	597.1	1.5	1.4	95.93	330.4	-136.7	367.9	365.1	2.86	128.656			
700.0	697.1	618.9	615.6	1.6	1.5	96.53	334.3	-137.8	374.8	371.8	3.02	124.039			
800.0	795.2	700.0	694.3	2.0	1.9	98.91	352.9	-142.9	401.6	397.9	3.63	110.527			
900.0	893.4	774.2	765.6	2.4	2.3	100.84	372.7	-148.5	432.9	428.7	4.25	101.934			
1,000.0	991.5	848.8	836.4	2.8	2.7	102.53	395.4	-154.7	468.6	463.7	4.87	96.145			
1,100.0	1,089.6	921.2	904.2	3.2	3.2	103.94	419.9	-161.6	508.2	502.7	5.50	92.355			
1,200.0	1,187.7	1,000.0	976.8	3.7	3.7	105.22	449.3	-169.7	551.6	545.4	6.16	89.531			
1,300.0	1,285.9	1,059.1	1,030.4	4.1	4.2	106.03	473.2	-176.4	598.1	591.4	6.77	88.392			
1,400.0	1,384.0	1,124.4	1,088.7	4.5	4.7	106.79	501.5	-184.3	648.0	640.6	7.40	87.560			
1,500.0	1,482.1	1,190.0	1,146.3	5.0	5.3	107.43	531.9	-192.7	700.7	692.6	8.05	87.070			
1,600.0	1,580.2	1,273.9	1,219.4	5.4	6.1	108.12	571.6	-203.7	754.5	745.8	8.74	86.356	SF		



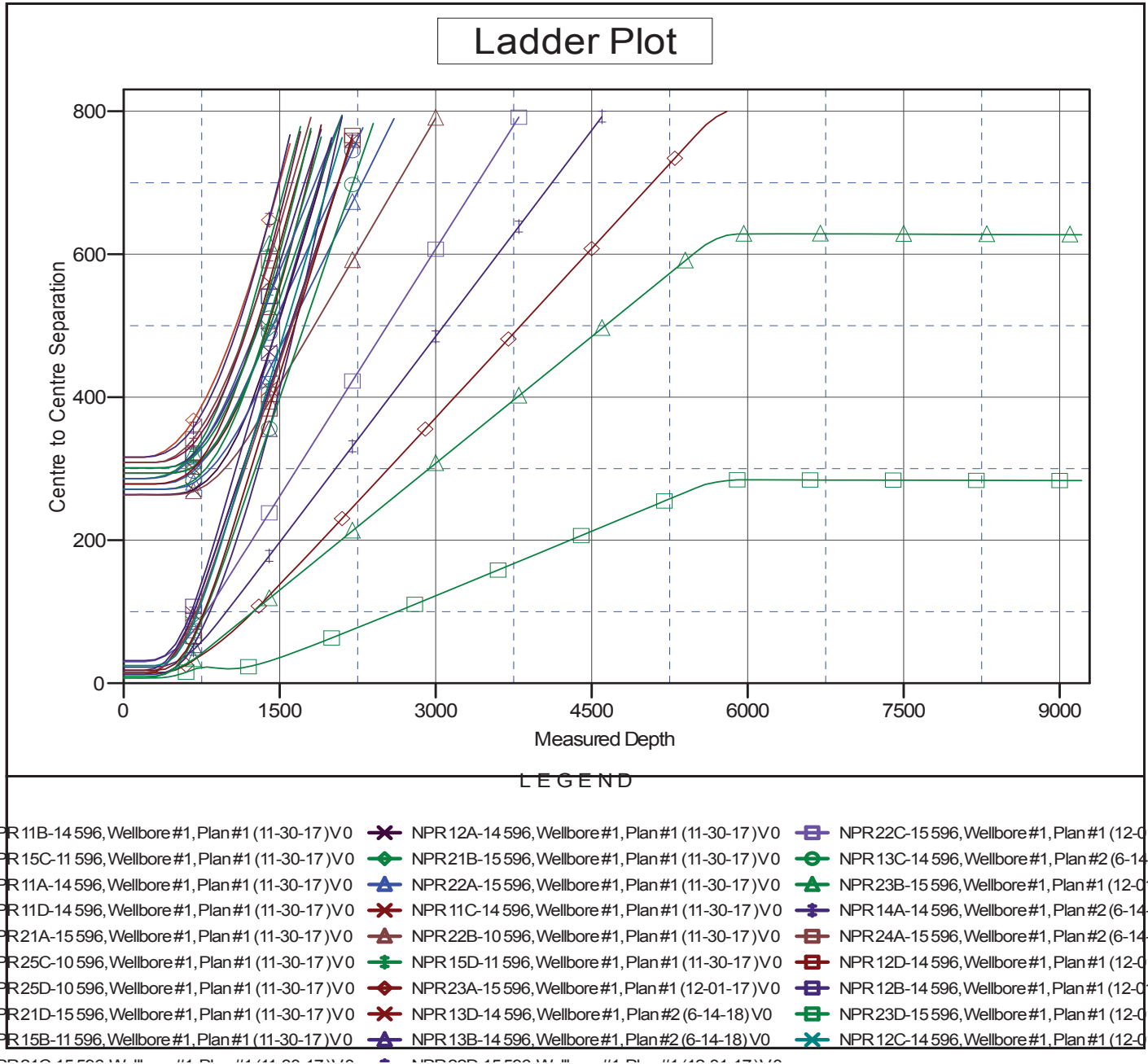
<b>Company:</b>	Caerus Oil and Gas LLC	<b>Local Co-ordinate Reference:</b>	Well NPR 23C-15 596
<b>Project:</b>	SEC.15-T5S-R96W	<b>TVD Reference:</b>	WELL @ 6453.0ft (Original Well Elev)
<b>Reference Site:</b>	NPR H15 596 North Pad Sec.15-T5S-R96W	<b>MD Reference:</b>	WELL @ 6453.0ft (Original Well Elev)
<b>Site Error:</b>	0.0 ft	<b>North Reference:</b>	True
<b>Reference Well:</b>	NPR 23C-15 596	<b>Survey Calculation Method:</b>	Minimum Curvature
<b>Well Error:</b>	0.0 ft	<b>Output errors are at</b>	2.00 sigma
<b>Reference Wellbore</b>	Wellbore #1	<b>Database:</b>	US_EDM
<b>Reference Design:</b>	Plan #2 (6-14-18)	<b>Offset TVD Reference:</b>	Offset Datum

NPR H15 596 South Pad Sec.15-T5S-R96W - NPR 25D-10 596 - Wellbore #1 - Plan #1 (11-30-17)													Offset Site Error:	0.0 ft
Survey Program: 0-MWDD													Offset Well Error:	0.0 ft
Reference		Offset		Semi Major Axis			Distance				Warning			
Measured Depth	Vertical Depth	Measured Depth	Vertical Depth	Reference	Offset	Highside Toolface	Offset Wellbore Centre	Between Centres	Between Ellipses	Minimum Separation			Separation Factor	
(ft)	(ft)	(ft)	(ft)	(ft)	(ft)	(°)	+N/-S (ft)	+E/-W (ft)	(ft)	(ft)	(ft)			
0.0	0.0	0.0	0.0	0.0	0.0	-23.39	283.3	-122.5	308.6					
100.0	100.0	100.0	100.0	0.1	0.1	-23.39	283.3	-122.5	308.6	308.4	0.22	1,373.179		
200.0	200.0	200.0	200.0	0.3	0.3	-23.39	283.3	-122.5	308.6	308.0	0.67	457.726		
300.0	300.0	300.0	300.0	0.6	0.6	-23.39	283.3	-122.5	308.6	307.5	1.12	274.636 CC, ES		
400.0	400.0	386.0	386.0	0.8	0.8	91.99	285.1	-123.3	311.0	309.5	1.53	203.357		
500.0	499.6	471.4	471.1	1.0	1.0	92.98	290.3	-125.6	318.1	316.1	1.96	162.412		
600.0	598.8	555.6	554.8	1.3	1.2	94.50	299.0	-129.3	330.2	327.7	2.45	134.830		
670.7	668.3	614.1	612.7	1.5	1.3	95.80	307.0	-132.7	341.9	339.1	2.84	120.442		
700.0	697.1	638.1	636.3	1.6	1.4	96.51	310.7	-134.3	347.6	344.6	3.01	115.398		
800.0	795.2	719.1	715.8	2.0	1.7	98.73	325.4	-140.6	370.0	366.4	3.62	102.347		
900.0	893.4	800.0	794.3	2.4	2.1	100.64	343.1	-148.2	397.0	392.8	4.24	93.670		
1,000.0	991.5	876.3	867.6	2.8	2.4	102.15	362.6	-156.6	428.4	423.5	4.87	87.979		
1,100.0	1,089.6	952.1	939.5	3.2	2.9	103.38	384.6	-166.0	463.7	458.2	5.51	84.142		
1,200.0	1,187.7	1,025.7	1,008.3	3.7	3.3	104.34	408.5	-176.3	502.7	496.6	6.16	81.633		
1,300.0	1,285.9	1,100.0	1,076.8	4.1	3.9	105.10	435.0	-187.7	545.2	538.4	6.82	79.941		
1,400.0	1,384.0	1,166.1	1,136.8	4.5	4.4	105.62	460.7	-198.7	591.0	583.5	7.47	79.098		
1,500.0	1,482.1	1,232.8	1,196.2	5.0	5.0	106.01	488.5	-210.6	639.8	631.6	8.14	78.586		
1,600.0	1,580.2	1,316.6	1,270.0	5.4	5.7	106.39	524.9	-226.2	690.3	681.5	8.86	77.905		
1,700.0	1,678.4	1,402.7	1,345.9	5.8	6.5	106.73	562.3	-242.3	740.9	731.3	9.59	77.267		
1,800.0	1,776.5	1,488.9	1,421.9	6.2	7.3	107.02	599.7	-258.4	791.5	781.2	10.33	76.629 SF		

<b>Company:</b>	Caerus Oil and Gas LLC	<b>Local Co-ordinate Reference:</b>	Well NPR 23C-15 596
<b>Project:</b>	SEC.15-T5S-R96W	<b>TVD Reference:</b>	WELL @ 6453.0ft (Original Well Elev)
<b>Reference Site:</b>	NPR H15 596 North Pad Sec.15-T5S-R96W	<b>MD Reference:</b>	WELL @ 6453.0ft (Original Well Elev)
<b>Site Error:</b>	0.0 ft	<b>North Reference:</b>	True
<b>Reference Well:</b>	NPR 23C-15 596	<b>Survey Calculation Method:</b>	Minimum Curvature
<b>Well Error:</b>	0.0 ft	<b>Output errors are at</b>	2.00 sigma
<b>Reference Wellbore</b>	Wellbore #1	<b>Database:</b>	US_EDM
<b>Reference Design:</b>	Plan #2 (6-14-18)	<b>Offset TVD Reference:</b>	Offset Datum

Reference Depths are relative to WELL @ 6453.0ft (Original Well Elev)  
Offset Depths are relative to Offset Datum  
Central Meridian is -111.000000

Coordinates are relative to: NPR 23C-15 596  
Coordinate System is Universal Transverse Mercator (US Survey Feet), Zone 12N  
Grid Convergence at Surface is: 1.82°



<b>Company:</b>	Caerus Oil and Gas LLC	<b>Local Co-ordinate Reference:</b>	Well NPR 23C-15 596
<b>Project:</b>	SEC.15-T5S-R96W	<b>TVD Reference:</b>	WELL @ 6453.0ft (Original Well Elev)
<b>Reference Site:</b>	NPR H15 596 North Pad Sec.15-T5S-R96W	<b>MD Reference:</b>	WELL @ 6453.0ft (Original Well Elev)
<b>Site Error:</b>	0.0 ft	<b>North Reference:</b>	True
<b>Reference Well:</b>	NPR 23C-15 596	<b>Survey Calculation Method:</b>	Minimum Curvature
<b>Well Error:</b>	0.0 ft	<b>Output errors are at</b>	2.00 sigma
<b>Reference Wellbore</b>	Wellbore #1	<b>Database:</b>	US_EDM
<b>Reference Design:</b>	Plan #2 (6-14-18)	<b>Offset TVD Reference:</b>	Offset Datum

Reference Depths are relative to WELL @ 6453.0ft (Original Well Elev)  
 Offset Depths are relative to Offset Datum  
 Central Meridian is -111.000000

Coordinates are relative to: NPR 23C-15 596  
 Coordinate System is Universal Transverse Mercator (US Survey Feet), Zone 12N  
 Grid Convergence at Surface is: 1.82°

