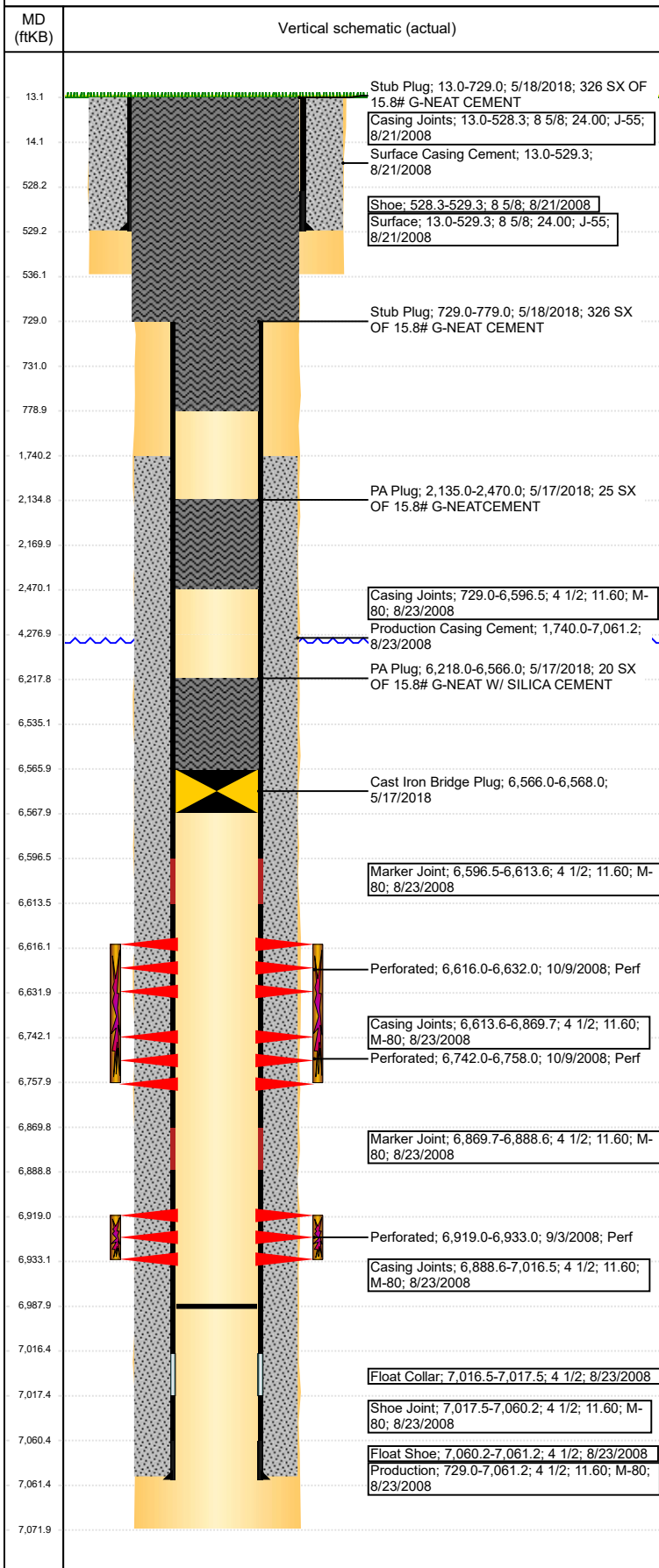


Wellbore Schematic Input Report

Well Name: DPG F 1-24

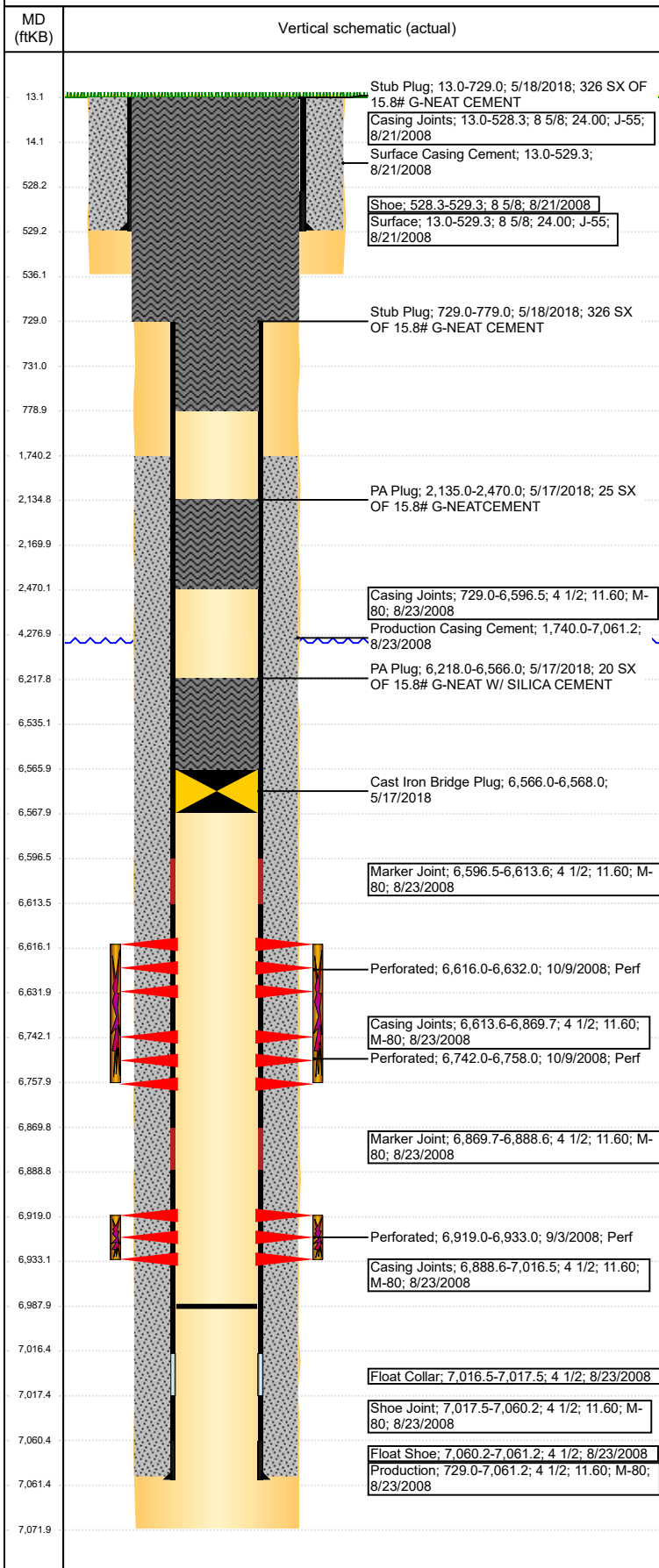
VERTICAL - ORIGINAL HOLE, 6/24/2018 8:15:40 PM



Well Header								
API 05-123-27169		Well Report Center 425674889			Well Configuration Type VERTICAL			
Original KB Elevation (ft) 4,625		KB - GL / MSL (ftKB) 13.00		Spud Date 8/20/2008		P & A Date 5/18/2018		
Production Route Watt - A3-01			Well Production Status PA			SoRT Ignore Yes		
Directions To Well From the intersection of CR 47 and East 8th Street, go South 2/10ths of a mile, then East 6/10ths of a mile to location.				Actual Latitude (°) 40.42401029		Actual Longitude (°) -104.61030265		
Comment 318A.e. LOCATION!!								
Congressional Location								
Quarter 3 SW	Quarter 4 SE	Section 1	Township 5	Twnshp N/S Dir N	Range 65	Range E/W Dir W		
Rig Operator								
Rig Operator TIM GOJKOVICK, RIG OPERATOR								
Plug Back Total Depths								
Date	Depth (ftKB)	Method			Com			
12/17/2008	6,987.8	TAG						
Wellbore Sections								
Section Des		Size (in)		Act Top, MD (ftKB)		Act Btm, MD (ftKB)		
SURFACE		12 1/4		13		536		
PRODUCTION		7 7/8		536		4,277		
PRODUCTION		7 7/8		4277		7,072		
Zone Statuses								
Zone Name		Status Date			Status			
CODELL		5/18/2018			P&A			
NIOBRARA		5/18/2018			P&A			
Casing Strings								
Surface, 529.3ftKB								
Casing Description Surface		Run Date 8/21/2008	OD (in) 8 5/8	Wt/Len (l... 24.00	Grade J-55	Top, MD (ft... 13.0	MD (ftKB) 529.3	
Production, 7,061.2ftKB								
Casing Description Production		Run Date 8/23/2008	OD (in) 4 1/2	Wt/Len (l... 11.60	Grade M-80	Top, MD (ft... 13.0	MD (ftKB) 7,061.2	
Cement								
Des		Start Date		Top (ftKB)		Btm (ftKB)		
Surface Casing Cement		8/21/2008		13.0		529.3		
Production Casing Cement		8/23/2008		1,740.0		7,061.2		
PA Plug		5/17/2018		6,218.0		6,566.0		
PA Plug		5/17/2018		2,135.0		2,470.0		
Stub Plug		5/18/2018		729.0		779.0		
Stub Plug		5/18/2018		13.0		729.0		
Proposed Cement								
Des				Top (ftKB)		Btm (ftKB)		
Balance Plug				2,170.0		2,470.0		
Stub Plug				729.0		779.0		
Shoe Plug				13.0		729.0		
Tubing Strings								
Tubing Description Tubing - Production		Run Date 12/18/2008	String... 2 3/8	ID (in) 2.00	Wt (lb/ft) 4.70	Grade J-55	Len (ft) 6,890.56	Set De...
Tubing Components								
Item Des	OD (in)	Wt (lb/ft)	Grade	Jts	Len (ft)	Btm (ftKB)	Btm (TVD) (ftKB)	
Tubing	2 3/8	4.70	J-55	224	6,889.06	6,900.1		
Seating Nipple	2 3/8			1	1.10	6,901.2		
Notched collar	2 3/8			1	0.40	6,901.6		
Other In Hole								
Run Date	Des			OD (in)	Top (ftKB)		Btm (ftKB)	
5/17/2018	Cast Iron Bridge Plug			3.99	6,566.0		6,568.0	
Proposed Other In Hole								
Des				OD (in)	Top (ftKB)		Btm (ftKB)	
Cast Iron Bridge Plug w/ 2 SX Cement				3.99	6,535.0		6,566.0	

Well Name: DPG F 1-24

VERTICAL - ORIGINAL HOLE, 6/24/2018 8:15:42 PM



Logs			
Date	Type	Top, MD (ftKB)	Btm, MD (ftKB)
8/23/2008	Caliper/Comp. Density/Neutron/GR/SP/ML	2,450.0	7,049.0
8/23/2008	DIL/GR/SP/Caliper	530.0	7,069.0
9/3/2008	CBL/CCL/GR	1,650.0	6,983.0
4/16/2018	GYRO	13.0	6,800.0

Perforation Data				
Linked Zone	Sum of Entered Shot Total	Top (ftKB)	Btm (ftKB)	Date
NIOBRARA, ORIGINAL HOLE	32	6,616.00	6,632.00	10/9/2008
NIOBRARA, ORIGINAL HOLE	32	6,742.00	6,758.00	10/9/2008
CODELL, ORIGINAL HOLE	56	6,919.00	6,933.00	9/3/2008
Total (Sum)	120			

Job Supply Amounts					
Supply Item Des	Type	Uni...	Job Category	Total...	Total...
WATER - COMPLETION/RE COMP	PUBLIC	bbl	ABANDON	480.0	0.0

Daily Cost Breakdown by Category		
Sum of Field Est...	Cost Description	Note
15,275.00	Downhole	RIG 6
Sum of Field Est...	Cost Description	Note
2,250.00	Downhole	C. SMITH
Sum of Field Est...	Cost Description	Note
6,932.66	Downhole	TRUCKS FOR MOVE
Sum of Field Est...	Cost Description	Note
2,873.00	Downhole	CIBP
Sum of Field Est...	Cost Description	Note
12,671.60	Downhole	P&A CEMENT
Sum of Field Est...	Cost Description	Note
2,500.00	Downhole	P&A TOOLS
Sum of Field Est...	Cost Description	Note
3,817.58	Downhole	UNLAND CSG
Sum of Field Est...	Cost Description	Note
200.00	Downhole	PORTA POTTY
Sum of Field Est...	Cost Description	Note
3,752.75	Downhole	CUT
Sum of Field Est...	Cost Description	Note
2,500.00	Downhole	CMT/MUD DISPOSAL
Sum of Field Est...	Cost Description	Note
2,000.00	Downhole	LOCATION PREP
Sum of Field Est...	Cost Description	Note
4,500.00	Downhole	DISPOSAL COST
Sum of Field Est...	Cost Description	Note
1,144.57	Downhole	HYDRO TEST TBG
Sum of Field Est...	Cost Description	Note
2,132.00	Downhole	MONITOR SYSTEM
Sum of Field Est...	Cost Description	Note
1,295.00	Downhole	GEN FOR MONITOR SYSTEM
Sum of Field Est...		
63,844.16		