

Detail "A"  
No Scale

SHL LAYOUT DETAIL

NPR 21A-15 596 ○ ○ NPR 15B-11 596  
NPR 22B-10 596 ○ ○ NPR 15C-11 596  
NPR 25C-10 596 ○ ○ NPR 15D-11 596  
NPR 25D-10 596 ○ ○ NPR 11A-14 596  
NPR 21B-15 596 ○ ○ NPR 11B-14 596  
NPR 21C-15 596 ○ ○ NPR 11C-14 596  
NPR 21D-15 596 ○ ○ NPR 11D-14 596  
NPR 22A-15 596 ○ ○ NPR 12A-14 596

Detail "B"  
No Scale

SHL LAYOUT DETAIL

NPR 22C-15 596 ○ ○ NPR 12B-14 596  
NPR 22D-15 596 ○ ○ NPR 12C-14 596  
NPR 23A-15 596 ○ ○ NPR 12D-14 596  
NPR 23B-15 596 ○ ○ NPR 13B-14 596  
NPR 23C-15 596 ○ ○ NPR 13C-14 596  
NPR 23D-15 596 ○ ○ NPR 13D-14 596  
NPR 24A-15 596 ○ ○ NPR 14A-14 596

REV: 1 06-27-18 T.S. (SHL & BHL CHANGES, ADD TGI)

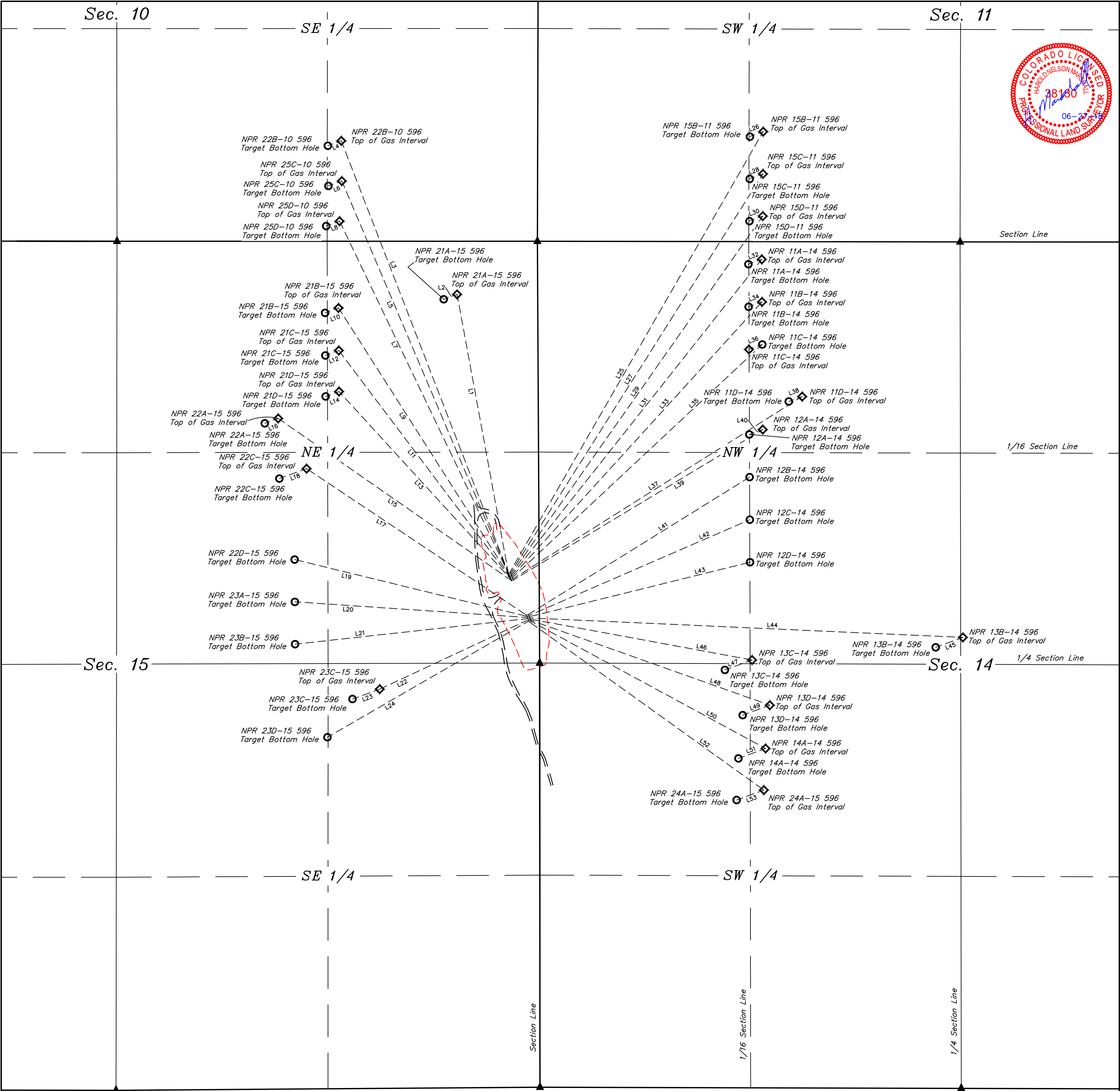
Cacrus Oil & Gas LLC

NPR H15 596  
SE 1/4 NE 1/4, SECTION 15, T5S, R96W, 6th P.M.  
GARFIELD COUNTY, COLORADO

SURVEYED BY	BART HUNTING, G.M.	08-16-17	SCALE
DRAWN BY	M.D.	09-21-17	1" = 60'
TARGET BOTTOM HOLE DRAWING			FIGURE #6



UELS, LLC  
Corporate Office \* 85 South 200 East  
Vernal, UT 84078 \* (435) 789-1017



LINE TABLE		
LINE	DIRECTION	LENGTH
L1	N10°25'29"W	1763.63'
L2	S69°59'59"W	88.80'
L3	N21°08'46"W	2891.52'
L4	S70°00'21"W	88.79'
L5	N23°01'20"W	2665.79'
L6	S69°59'35"W	88.77'
L7	N25°36'14"W	2451.40'
L8	S70°00'07"W	88.80'
L9	N32°30'33"W	1989.10'
L10	S69°59'59"W	88.80'
L11	N37°01'35"W	1777.56'
L12	S70°00'13"W	88.78'
L13	N42°22'08"W	1587.28'
L14	S69°59'51"W	88.79'
L15	N55°11'49"W	1770.28'
L16	S69°59'51"W	88.79'
L17	N56°19'49"W	1645.91'
L18	S70°00'22"W	180.16'

LINE TABLE		
LINE	DIRECTION	LENGTH
L19	N76°15'54"W	1489.22'
L20	N86°09'36"W	1451.53'
L21	N83°44'05"E	1458.53'
L22	S64°58'12"W	1021.76'
L23	S69°59'43"W	180.06'
L24	S59°59'35"W	1448.79'
L25	N29°53'20"E	3164.02'
L26	S70°00'21"W	88.79'
L27	N32°18'07"E	2942.57'
L28	S70°00'13"W	88.78'
L29	N35°06'00"E	2727.14'
L30	S70°00'07"W	88.80'
L31	N38°22'15"E	2511.78'
L32	S69°59'59"W	88.80'
L33	N42°18'36"E	2314.06'
L34	S69°59'59"W	88.80'
L35	N46°57'31"E	2129.27'
L36	S69°59'59"W	88.80'

LINE TABLE		
LINE	DIRECTION	LENGTH
L37	N57°46'32"E	2129.53'
L38	S69°59'51"W	88.79'
L39	N58°53'39"E	1814.11'
L40	S69°59'57"W	88.76'
L41	N58°10'05"E	1622.81'
L42	N66°32'01"E	1501.30'
L43	N76°07'19"E	1416.89'
L44	S87°25'53"E	2700.01'
L45	S70°00'22"W	180.16'
L46	S79°33'21"E	1405.59'
L47	S70°00'22"W	180.16'
L48	S70°26'28"E	1581.35'
L49	S69°59'43"W	180.06'
L50	S61°32'14"E	1661.19'
L51	S69°59'43"W	180.06'
L52	S54°20'16"E	1795.52'
L53	S70°01'01"W	180.25'

REV: 1 06-27-18 T.S. (SHL & BHL CHANGES, ADD TGI)

Caerus Oil & Gas LLC

NPR H15 596  
SE 1/4 NE 1/4, SECTION 15, T3S, R96W, 6th P.M.  
GARFIELD COUNTY, COLORADO

SURVEYED BY	BART HUNTING, G.M.	08-16-17	SCALE
DRAWN BY	M.D.	09-21-17	1" = 60'
TARGET BOTTOM HOLE DRAWING			FIGURE #6A