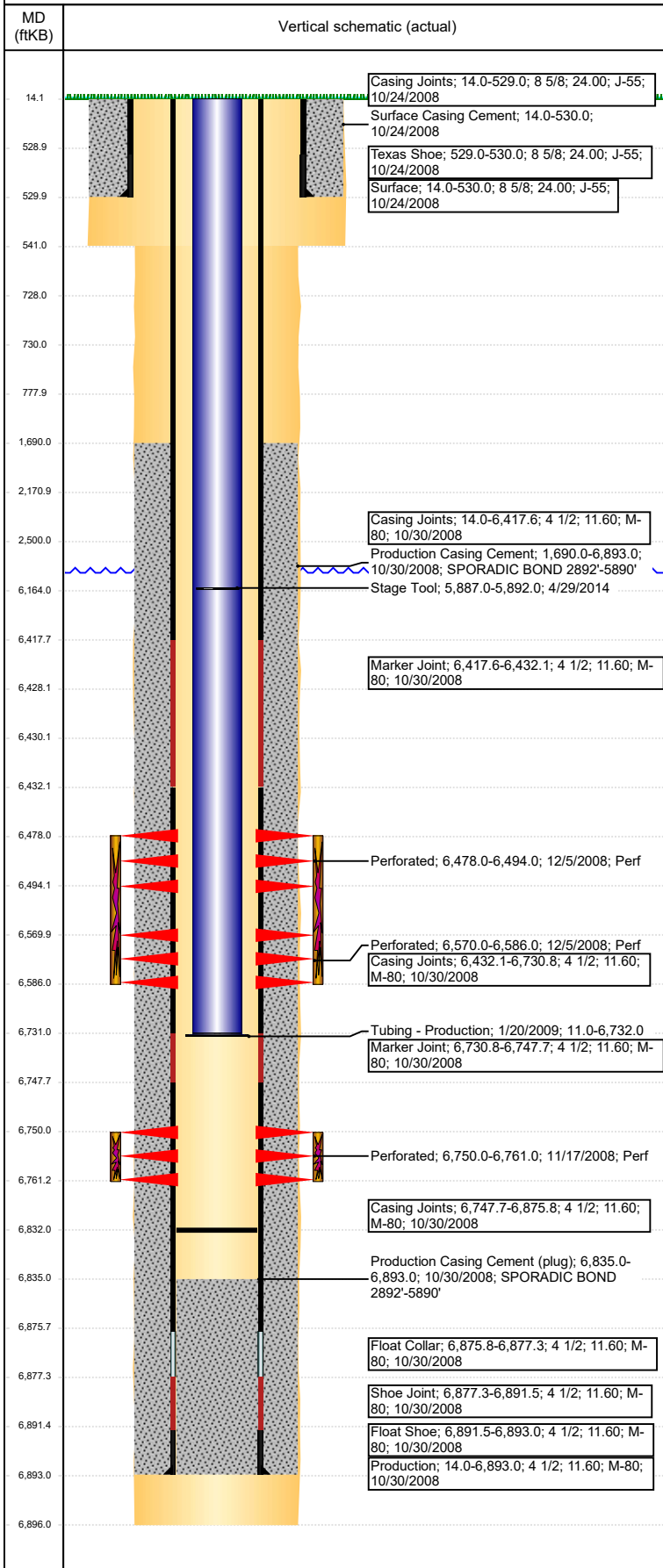


Well Name: 70 RANCH USX BB09-15

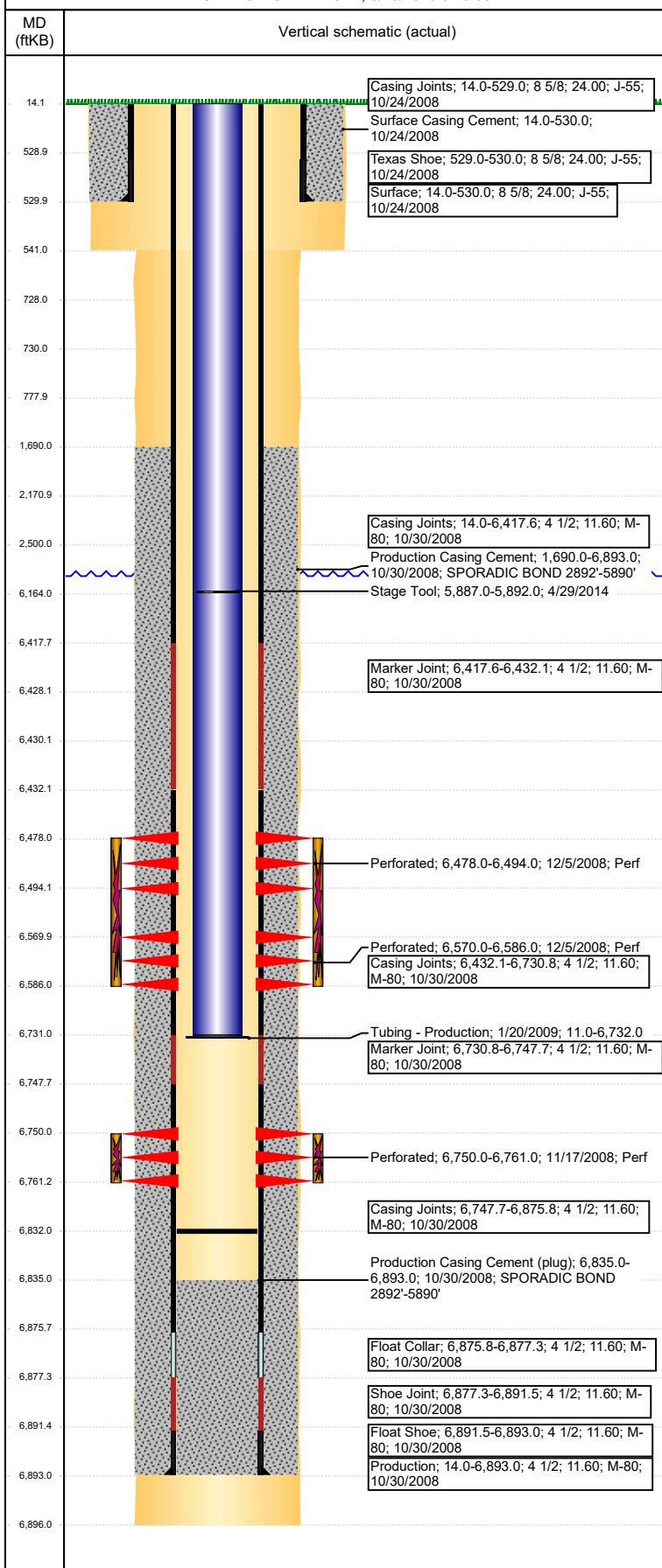
VERTICAL - ORIGINAL HOLE, 6/26/2018 3:46:06 PM



Well Header							
API 05-123-28084		Well Report Center 425674607		Well Configuration Type VERTICAL			
Original KB Elevation (ft) 4,730		KB - GL / MSL (ftKB) 14.00		Spud Date 10/24/2008		P & A Date	
Production Route B2-03			Well Production Status PR				SoRT Ignore No
Directions To Well From the intersection of WCR 67 and WCR 68, go East .2 mile, then South 8/10ths of a mile, Southeast 4/10ths, South 1/2 mile, South-southwest 1/2 mile, then South 3/10ths, SW 4/10ths, South 1 mile, West 1/2 mile, South 8/10ths, West 2/10ths to location				Actual Latitude (°) 40.40792939		Actual Longitude (°) -104.44027081	
Comment PER REGULATORY: SUNDRY FILED W/STATE TO CHANGE NAME LOGS SHOW AIR GAP @ 13', FIELD ENTERED SURFACE START DEPTHS @ 14'							
Congressional Location							
Quarter 3 SW	Quarter 4 SE	Section 9	Township 5	Twntshp N/S Dir N	Range 63	Range E/W Dir W	
Rig Operator							
Rig Operator							
Plug Back Total Depths							
Date	Depth (ftKB)	Method			Com		
1/20/2009	6,832.0	TUBING TALLY			DRILL CIFTP W/ BURN SHOE AND CHASE DOWN...		
Wellbore Sections							
Section Des		Size (in)		Act Top, MD (ftKB)		Act Btm, MD (ftKB)	
SURFACE		12 1/4		14		541	
PRODUCTION		7 7/8		541		6,896	
Zone Statuses							
Zone Name		Status Date			Status		
NIOBRARA		12/7/2008			PR		
CODELL		12/7/2008			PR		
Casing Strings							
Surface, 530.0ftKB							
Casing Description Surface	Run Date 10/24/2008	OD (in) 8 5/8	Wt/Len (l... 24.00	Grade J-55	Top, MD (ft... 14.0	MD (ftKB) 530.0	
Production, 6,893.0ftKB							
Casing Description Production	Run Date 10/30/2008	OD (in) 4 1/2	Wt/Len (l... 11.60	Grade M-80	Top, MD (ft... 14.0	MD (ftKB) 6,893.0	
Cement							
Des			Start Date		Top (ftKB)		Btm (ftKB)
Surface Casing Cement			10/24/2008		14.0		530.0
Production Casing Cement			10/30/2008		1,690.0		6,893.0
Proposed Cement							
Des					Top (ftKB)		Btm (ftKB)
P&A PLUG					728.0		778.0
P&A PLUG					6,164.0		6,428.0
P&A PLUG					2,171.0		2,500.0
P&A PLUG					14.0		730.0
Tubing Strings							
Tubing Description Tubing - Production	Run Date 1/20/2009	String... 2 3/8	ID (in) 2.00	Wt (lb/ft) 4.70	Grade J-55	Len (ft) 6,721.03	Set De...
Tubing Components							
Item Des	OD (in)	Wt (lb/ft)	Grade	Jts	Len (ft)	Btm (ftKB)	Btm (TVD) (ftKB)
Tubing	2 3/8	4.70	J-55	218	6,719.53	6,730.5	
Pump Seating	2 3/8			1	1.10	6,731.6	
Nipple							
Notched collar	3 1/16			1	0.40	6,732.0	
Other In Hole							
Run Date	Des			OD (in)	Top (ftKB)	Btm (ftKB)	
Proposed Other In Hole							
Des				OD (in)	Top (ftKB)	Btm (ftKB)	
Cast Iron Bridge Plug				3.99	6,428.0	6,430.0	

Well Name: 70 RANCH USX BB09-15

VERTICAL - ORIGINAL HOLE, 6/26/2018 3:46:08 PM



Logs			
Date	Type	Top, MD (ftKB)	Btm, MD (ftKB)
10/30/2008	Caliper/Comp. Density/Neutron/GR/SP/ML	530.0	6,899.0
10/30/2008	DIL/GR/SP/Caliper	2,650.0	6,899.0
11/12/2008	CBL/CCL/GR	1,600.0	6,828.0
5/17/2011	GYRO	0.0	6,720.0

Perforation Data				
Linked Zone	Sum of Entered Shot Total	Top (ftKB)	Btm (ftKB)	Date
NIOBRARA, ORIGINAL HOLE	32	6,478.00	6,494.00	12/5/2008
NIOBRARA, ORIGINAL HOLE	32	6,570.00	6,586.00	12/5/2008
CODELL, ORIGINAL HOLE	44	6,750.00	6,761.00	11/17/2008
Total (Sum)	108			

Job Supply Amounts					
Supply Item Des	Type	Uni...	Job Category	Total...	Total...