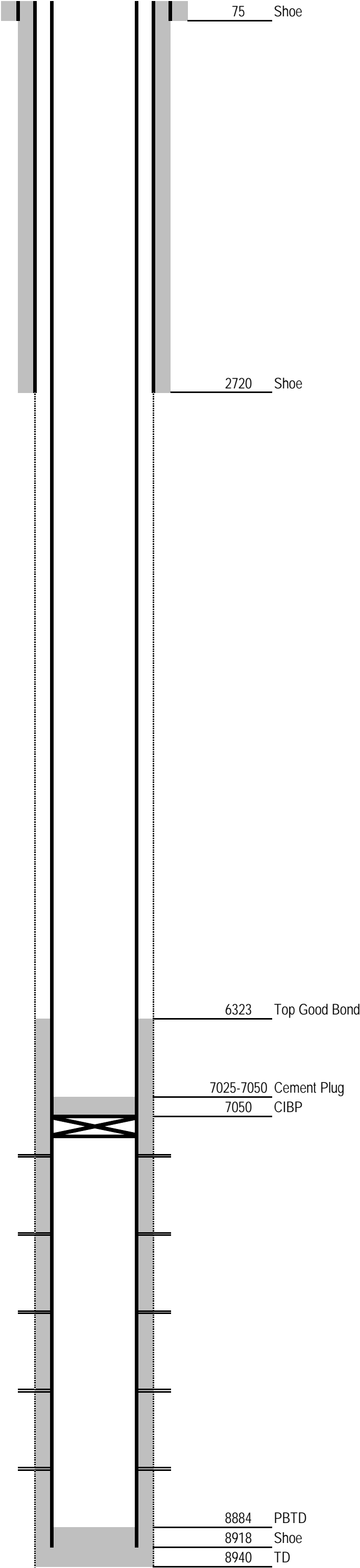


Laramie Energy

Current Wellbore Diagram

Not to Scale

Geological Tops	Depth
Fort Union	4643
Mesaverde	5976
Williams Fork	6210
Cameo	8321
Rollins	8702



Well Name	Cascade Creek 697-08-02B
API	05-045-20961
Pad	Cascade Creek 697-08A
Surface Location	372 FNL & 1806 FWL NENW SEC08 T06S R97W
GPS Coordinates	39.54367 -108.24644
Bottom Hole Loc	818 FNL & 142 FWL SEC08 T06S R97W
Field	Grand Valley #31290
County, State	Garfield, CO
Spud Date	4/20/2012
Completion Date	
Diagram Date	6/27/2018
KB Elevation	8430
KB	30
GL Elevation	8400

Hole	20"
Conductor	16" 65# @ 75
Cement	SURFACE

Surface Hole	14.75" @ 2740
Casing	9-5/8" 36# J55 LTC @ 2720
Cement	Lead: 1162 sx HalCem @ 12.3 ppg, yield 2.15 Tail: 160 sx VersaCem @ 12.8 ppg, yield 2.07 Top: 425 sx HalCem @ 12.5 ppg, yield 1.97
TOC	SURFACE

Production Hole	8.75" @ 8940
Casing	4-1/2" 11.6# P110 BTC @ 8918
Cement	Lead: 665 sx ExtendaCem @ 12.0 ppg, yield 2.01 Tail: 972 sx VersaCem @ 13.1 ppg, yield 1.61
TOC	1870
Top Good Bond	6323 CBL dated 8-JUN-2012

Perforations	WF / Cameo	7097-8588
--------------	------------	-----------