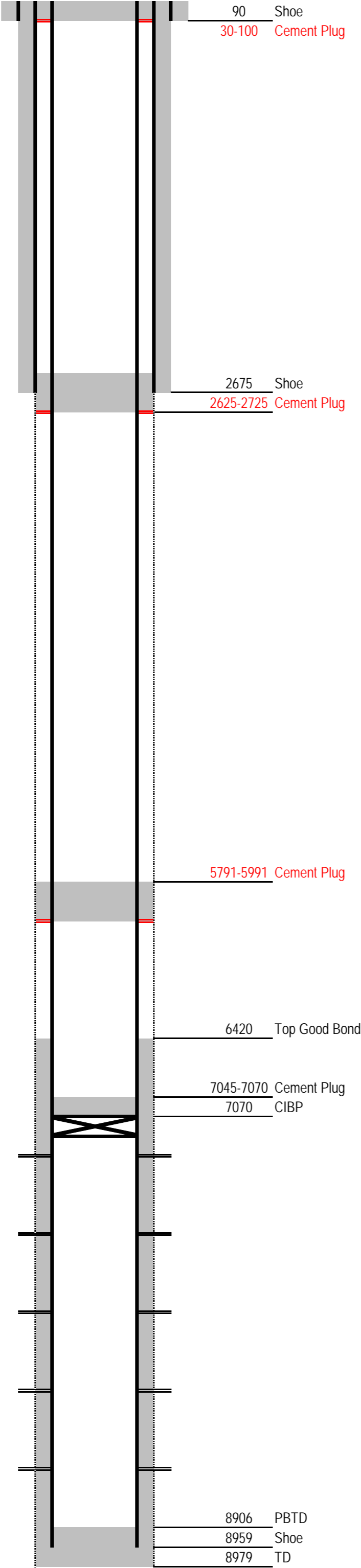


Laramie Energy

Proposed P&A Wellbore Diagram

Not to Scale

Geological Tops	Depth
Fort Union	4578
Mesaverde	5991
Williams Fork	6222
Cameo	8301
Rollins	8684



Well Name	Cascade Creek 697-08-02A
API	05-045-20953
Pad	Cascade Creek 697-08A
Surface Location	365 FNL & 1804 FWL NENW SEC08 T06S R97W
GPS Coordinates	39.5436869 -108.246456
Bottom Hole Loc	512 FNL & 164 FWL SEC08 T06S R97W
Field	Grand Valley #31290
County, State	Garfield, CO
Spud Date	4/17/2012
Completion Date	
Diagram Date	6/27/2018
KB Elevation	8430
KB	30
GL Elevation	8400

Hole	20"
Conductor	16" 65# @ 90
Cement	SURFACE

Surface Hole	14.75" @ 2690
Casing	9-5/8" 36# J55 LTC @ 2675
Cement	Lead: 1160 sx VersaCem @ 12.3 ppg Tail: 200 sx VersaCem @ 12.8 ppg
TOC	SURFACE

Production Hole	8.75" @ 8979
Casing	4-1/2" 11.6# P110 BTC @ 8959
Cement	Lead: 653 sx VariCem @ 12.4 ppg, yield 1.89 Tail: 974 sx VariCem @ 13.1 ppg, yield 1.61
TOC	1730
Top Good Bond	6420 CBL dated 8-JUN-2012

Perforations	WF / Cameo	7117-8558
--------------	------------	-----------