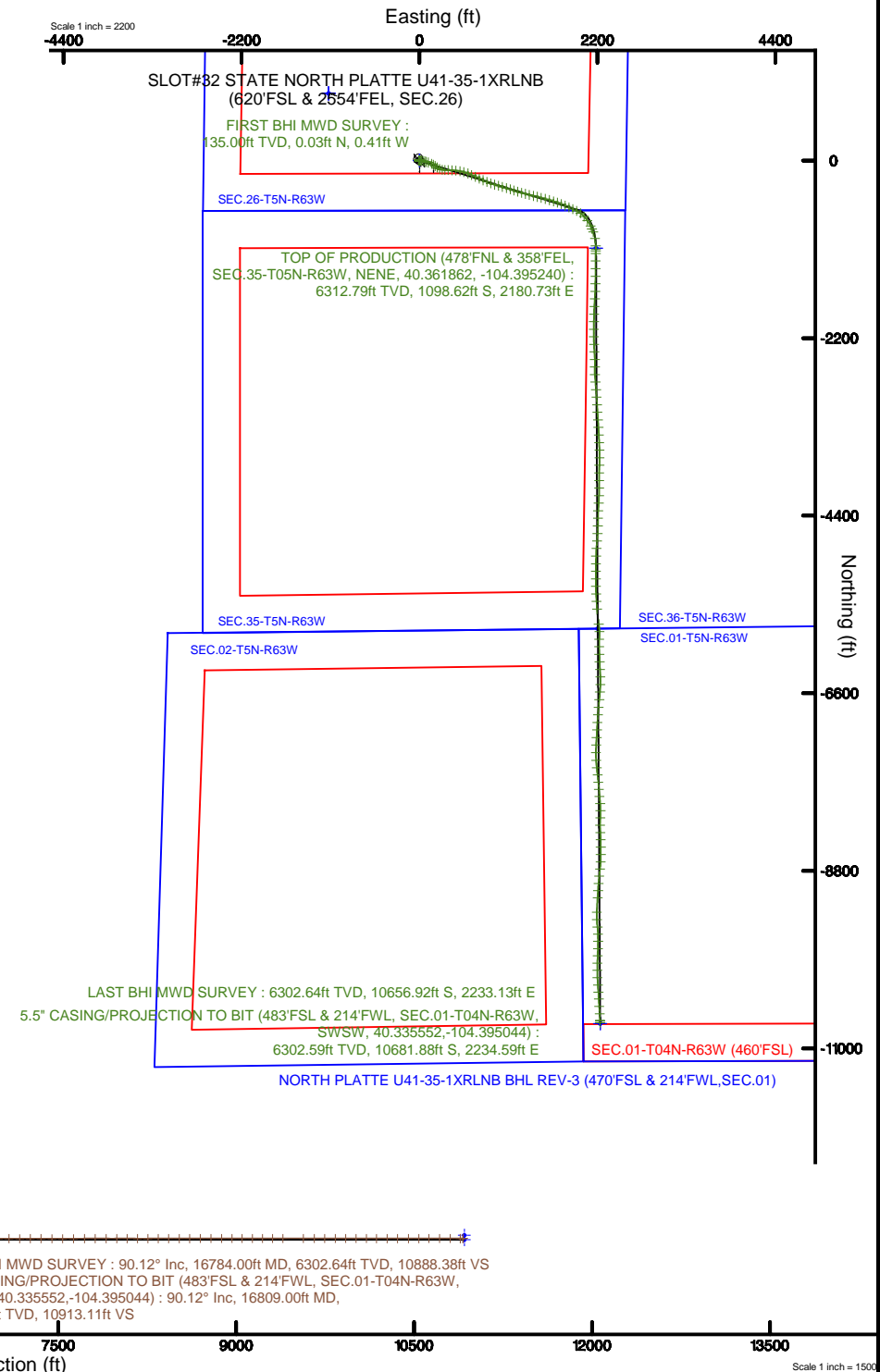
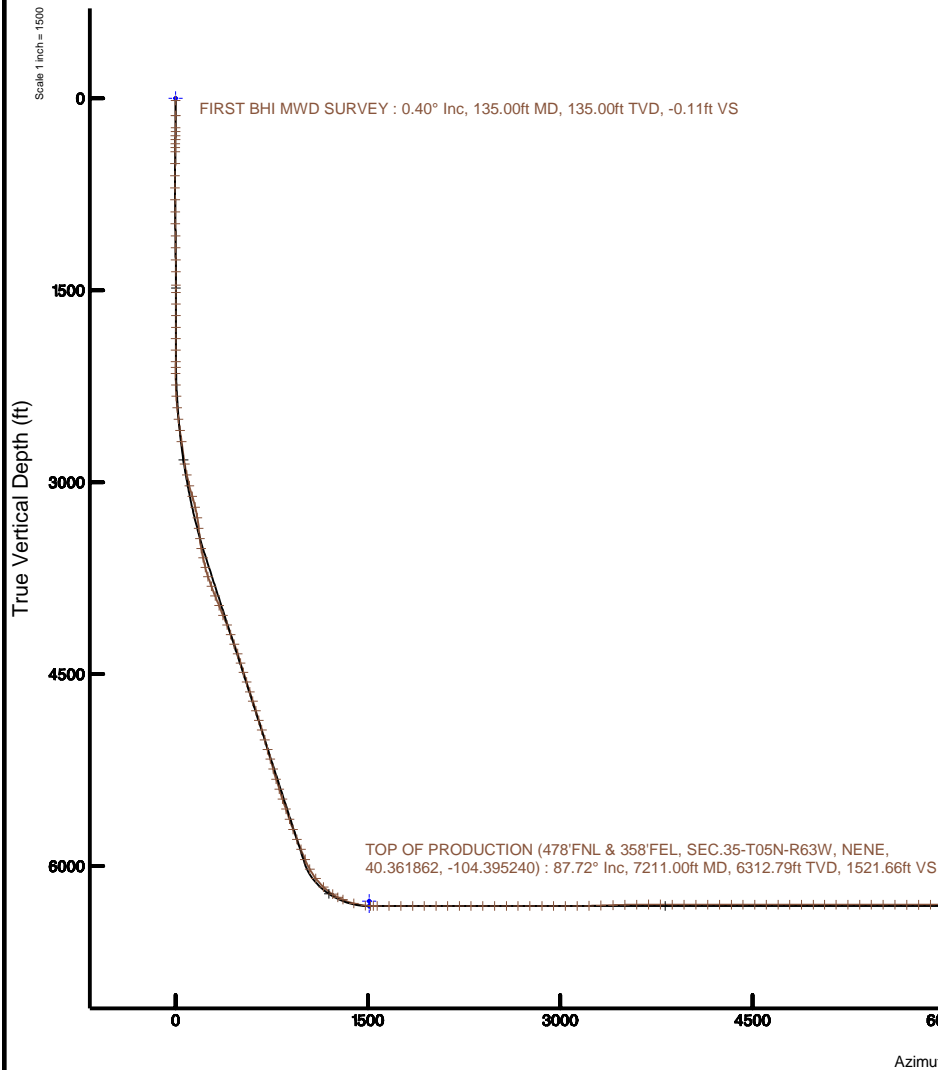


Location:	COLORADO	Slot:	SLOT#32 STATE NORTH PLATTE U41-35-1XRLNB (620'FSL & 2554'FEL, SEC.26)
Field:	WELD COUNTY	Well:	STATE NORTH PLATTE U41-35-1XRLNB
Facility:	SEC.26-T5N-R63W	Wellbore:	STATE NORTH PLATTE U41-35-1XRLNB PWB

Plot reference wellpath is STATE NORTH PLATTE U41-35-1XRLNB PWP (REV-C.0)	Grid System: NAD83 / Lambert Colorado SPN, Northern Zone (501), US feet
True vertical depths are referenced to RIG (4550'GL + 17'RKb) (RKB)	* = Wellpath was transformed from a different geodetic datum
Measured depths are referenced to RIG (4550'GL + 17'RKb) (RKB)	North Reference: True north
RIG (4550'GL + 17'RKb) (RKB) to Mean Sea Level: 4567 feet	Scale: True distance
Mean Sea Level to Mud line (At Slot: SL07332 STATE NORTH PLATTE U41-35-1XRLNB (620'FSL & 2554'FEL, SEC.26): 0 feet	Depths are in feet
Coordinates are in feet referenced to Slot	Created by: ingrimjamr on 2018-05-29
	Database: Denver





Actual Wellpath Report

STATE NORTH PLATTE U41-35-1XRLNB AWP

Page 1 of 10



REFERENCE WELLPATH IDENTIFICATION			
Operator	BONANZA CREEK OIL COMPANY	Slot	SLOT#32 STATE NORTH PLATTE U41-35-1XRLNB (620'FSL & 2554'FEL, SEC.26)
Area	COLORADO	Well	STATE NORTH PLATTE U41-35-1XRLNB
Field	WELD COUNTY	Wellbore	STATE NORTH PLATTE U41-35-1XRLNB AWP
Facility	SEC.26-T5N-R63W		

REPORT SETUP INFORMATION			
Projection System	NAD83 / Lambert Colorado SP, Northern Zone (501), US feet	Software System	WellArchitect® 5.0
North Reference	True	User	Ingmjmr
Scale	0.999959	Report Generated	5/30/2018 at 11:53:40 AM
Convergence at slot	0.71° East	Database/Source file	Denver/STATE_NORTH_PLATTE_U41-35-1XRLNB_AWP.xml

WELLPATH LOCATION						
	Local coordinates		Grid coordinates		Geographic coordinates	
	North[ft]	East[ft]	Easting[US ft]	Northing[US ft]	Latitude	Longitude
Slot Location	-4143.61	1657.23	3305658.85	1377651.81	40°21'53.518"N	104°24'11.027"W
Facility Reference Pt			3303950.84	1381774.54	40°22'34.464"N	104°24'32.436"W
Field Reference Pt			3224525.77	1254425.87	40°01'44.400"N	104°41'53.556"W

WELLPATH DATUM			
Calculation method	Minimum curvature	RIG (4550'GL + 17'RKB) (RKB) to Facility Vertical Datum	4567.00ft
Horizontal Reference Pt	Slot	RIG (4550'GL + 17'RKB) (RKB) to Mean Sea Level	4567.00ft
Vertical Reference Pt	RIG (4550'GL + 17'RKB) (RKB)	RIG (4550'GL + 17'RKB) (RKB) to Mud Line at Slot (SLOT#32 STATE NORTH PLATTE U41-35-1XRLNB (620'FSL & 2554'FEL, SEC.26))	4567.00ft
MD Reference Pt	RIG (4550'GL + 17'RKB) (RKB)	Section Origin	N 0.00, E 0.00 ft
Field Vertical Reference	Mean Sea Level	Section Azimuth	168.19°



Actual Wellpath Report

STATE NORTH PLATTE U41-35-1XRLNB AWP

Page 2 of 10



REFERENCE WELLPATH IDENTIFICATION			
Operator	BONANZA CREEK OIL COMPANY	Slot	SLOT#32 STATE NORTH PLATTE U41-35-1XRLNB (620'FSL & 2554'FEL, SEC.26)
Area	COLORADO	Well	STATE NORTH PLATTE U41-35-1XRLNB
Field	WELD COUNTY	Wellbore	STATE NORTH PLATTE U41-35-1XRLNB AWP
Facility	SEC.26-T5N-R63W		

WELLPATH DATA (190 stations) † = interpolated/extrapolated station										
MD (ft)	Inclination (°)	Azimuth (°)	TVD (ft)	Vert Sect (ft)	North (ft)	East (ft)	Latitude	Longitude	DLS ("/100ft)	Comments
0.00†	0.000	273.760	0.00	0.00	0.00	0.00	40°21'53.518"N	104°24'11.027"W	0.00	
17.00	0.000	273.760	17.00	0.00	0.00	0.00	40°21'53.518"N	104°24'11.027"W	0.00	
135.00	0.400	273.760	135.00	-0.11	0.03	-0.41	40°21'53.518"N	104°24'11.032"W	0.34	FIRST BHI MWD SURVEY
229.00	0.500	300.520	229.00	-0.47	0.26	-1.09	40°21'53.520"N	104°24'11.041"W	0.24	
261.00	0.460	317.730	261.00	-0.68	0.42	-1.30	40°21'53.522"N	104°24'11.044"W	0.47	
292.00	0.540	318.500	291.99	-0.91	0.62	-1.48	40°21'53.524"N	104°24'11.046"W	0.26	
323.00	0.590	320.730	322.99	-1.18	0.86	-1.68	40°21'53.526"N	104°24'11.048"W	0.18	
354.00	0.740	324.860	353.99	-1.51	1.14	-1.89	40°21'53.529"N	104°24'11.051"W	0.51	
385.00	0.760	319.440	384.99	-1.87	1.46	-2.14	40°21'53.532"N	104°24'11.054"W	0.24	
417.00	0.680	327.400	416.99	-2.24	1.79	-2.38	40°21'53.535"N	104°24'11.058"W	0.40	
511.00	0.810	325.780	510.98	-3.37	2.80	-3.06	40°21'53.545"N	104°24'11.066"W	0.14	
605.00	0.300	324.370	604.97	-4.21	3.55	-3.57	40°21'53.553"N	104°24'11.073"W	0.54	
699.00	0.340	125.640	698.97	-4.23	3.59	-3.49	40°21'53.553"N	104°24'11.072"W	0.67	
793.00	0.610	138.100	792.97	-3.59	3.06	-2.93	40°21'53.548"N	104°24'11.065"W	0.31	
887.00	0.660	145.910	886.96	-2.66	2.24	-2.29	40°21'53.540"N	104°24'11.056"W	0.11	
981.00	0.660	172.840	980.96	-1.62	1.25	-1.92	40°21'53.530"N	104°24'11.052"W	0.33	
1075.00	0.550	155.530	1074.95	-0.64	0.30	-1.67	40°21'53.521"N	104°24'11.048"W	0.23	
1169.00	0.720	169.480	1168.95	0.39	-0.69	-1.37	40°21'53.511"N	104°24'11.045"W	0.24	
1262.00	0.650	170.590	1261.94	1.50	-1.78	-1.18	40°21'53.500"N	104°24'11.042"W	0.08	
1356.00	0.310	288.150	1355.94	1.91	-2.23	-1.33	40°21'53.496"N	104°24'11.044"W	0.89	
1460.00	0.090	212.880	1459.94	1.83	-2.21	-1.64	40°21'53.496"N	104°24'11.048"W	0.29	
1518.00	0.310	203.470	1517.94	1.99	-2.39	-1.73	40°21'53.494"N	104°24'11.049"W	0.38	
1607.00	0.100	292.430	1606.94	2.14	-2.58	-1.90	40°21'53.492"N	104°24'11.051"W	0.36	
1698.00	0.170	36.300	1697.94	2.01	-2.45	-1.89	40°21'53.493"N	104°24'11.051"W	0.24	
1790.00	0.250	28.030	1789.94	1.76	-2.16	-1.72	40°21'53.496"N	104°24'11.049"W	0.09	
1879.00	0.570	92.310	1878.93	1.72	-2.00	-1.18	40°21'53.498"N	104°24'11.042"W	0.58	
1968.00	0.550	278.260	1967.93	1.68	-1.96	-1.16	40°21'53.498"N	104°24'11.042"W	1.26	
2059.00	1.430	72.680	2058.92	1.42	-1.56	-0.51	40°21'53.502"N	104°24'11.033"W	2.13	
2104.00	2.670	69.780	2103.89	1.22	-1.03	1.01	40°21'53.507"N	104°24'11.014"W	2.76	
2150.00	4.010	76.620	2149.82	1.01	-0.29	3.58	40°21'53.515"N	104°24'10.981"W	3.03	



Actual Wellpath Report

STATE NORTH PLATTE U41-35-1XRLNB AWP

Page 3 of 10



REFERENCE WELLPATH IDENTIFICATION			
Operator	BONANZA CREEK OIL COMPANY	Slot	SLOT#32 STATE NORTH PLATTE U41-35-1XRLNB (620'FSL & 2554'FEL, SEC.26)
Area	COLORADO	Well	STATE NORTH PLATTE U41-35-1XRLNB
Field	WELD COUNTY	Wellbore	STATE NORTH PLATTE U41-35-1XRLNB AWB
Facility	SEC.26-T5N-R63W		

WELLPATH DATA (190 stations)										
MD (ft)	Inclination (°)	Azimuth (°)	TVD (ft)	Vert Sect (ft)	North (ft)	East (ft)	Latitude	Longitude	DLS (°/100ft)	Comments
2241.00	7.350	90.780	2240.36	2.20	0.37	12.50	40°21'53.521°N	104°24'10.865°W	3.95	
2331.00	10.190	98.500	2329.30	6.22	-0.89	26.13	40°21'53.509°N	104°24'10.689°W	3.41	
2423.00	12.410	104.600	2419.52	13.44	-4.58	43.75	40°21'53.472°N	104°24'10.462°W	2.74	
2515.00	13.980	107.380	2509.08	23.25	-10.39	63.92	40°21'53.415°N	104°24'10.201°W	1.84	
2604.00	15.490	108.190	2595.16	34.44	-17.32	85.47	40°21'53.346°N	104°24'09.923°W	1.71	
2696.00	14.150	108.540	2684.09	46.27	-24.73	107.81	40°21'53.273°N	104°24'09.634°W	1.46	
2875.00	14.970	114.480	2857.35	71.01	-41.26	149.59	40°21'53.110°N	104°24'09.094°W	0.95	
2965.00	18.110	120.710	2943.62	87.34	-53.23	172.21	40°21'52.992°N	104°24'08.802°W	4.00	
3054.00	18.380	129.080	3028.16	107.58	-69.14	194.99	40°21'52.834°N	104°24'08.508°W	2.96	
3142.00	22.130	125.500	3110.71	130.54	-87.52	219.27	40°21'52.653°N	104°24'08.194°W	4.49	
3233.00	22.080	112.750	3195.07	152.85	-104.10	249.01	40°21'52.489°N	104°24'07.810°W	5.26	
3323.00	22.250	101.410	3278.46	169.18	-114.01	281.33	40°21'52.391°N	104°24'07.392°W	4.75	
3412.00	23.440	92.500	3360.50	180.20	-118.12	315.54	40°21'52.350°N	104°24'06.950°W	4.11	
3501.00	27.980	91.180	3440.67	189.27	-119.32	354.12	40°21'52.338°N	104°24'06.452°W	5.14	
3591.00	34.500	93.320	3517.58	200.68	-121.24	400.73	40°21'52.320°N	104°24'05.850°W	7.35	
3681.00	34.440	95.350	3591.78	214.84	-125.09	451.51	40°21'52.282°N	104°24'05.194°W	1.28	
3771.00	34.230	100.500	3666.12	231.96	-132.07	501.75	40°21'52.212°N	104°24'04.545°W	3.24	
3860.00	34.520	106.190	3739.59	253.31	-143.67	550.59	40°21'52.098°N	104°24'03.914°W	3.62	
3951.00	34.310	111.910	3814.68	279.66	-160.43	599.16	40°21'51.932°N	104°24'03.286°W	3.56	
4041.00	34.280	113.700	3889.04	308.46	-180.09	645.91	40°21'51.738°N	104°24'02.683°W	1.12	
4133.00	34.440	114.900	3964.99	339.06	-201.45	693.23	40°21'51.527°N	104°24'02.071°W	0.76	
4225.00	34.440	115.540	4040.86	370.39	-223.62	740.30	40°21'51.308°N	104°24'01.463°W	0.39	
4317.00	34.400	113.680	4116.76	401.26	-245.28	787.57	40°21'51.094°N	104°24'00.853°W	1.14	
4407.00	34.410	111.940	4191.01	430.15	-264.99	834.44	40°21'50.899°N	104°24'00.247°W	1.09	
4498.00	34.370	110.510	4266.11	458.17	-283.60	882.35	40°21'50.715°N	104°23'59.628°W	0.89	
4588.00	34.340	106.810	4340.42	483.91	-299.84	930.45	40°21'50.554°N	104°23'59.007°W	2.32	
4677.00	34.300	105.500	4413.92	507.44	-313.80	978.65	40°21'50.417°N	104°23'58.384°W	0.83	
4765.00	33.720	105.870	4486.87	530.17	-327.11	1026.04	40°21'50.285°N	104°23'57.772°W	0.70	
4856.00	33.510	107.160	4562.65	554.07	-341.43	1074.34	40°21'50.143°N	104°23'57.148°W	0.82	
4948.00	33.980	108.020	4639.15	579.15	-356.87	1123.05	40°21'49.991°N	104°23'56.519°W	0.73	



Actual Wellpath Report

STATE NORTH PLATTE U41-35-1XRLNB AWP

Page 4 of 10



REFERENCE WELLPATH IDENTIFICATION			
Operator	BONANZA CREEK OIL COMPANY	Slot	SLOT#32 STATE NORTH PLATTE U41-35-1XRLNB (620'FSL & 2554'FEL, SEC.26)
Area	COLORADO	Well	STATE NORTH PLATTE U41-35-1XRLNB
Field	WELD COUNTY	Wellbore	STATE NORTH PLATTE U41-35-1XRLNB AWP
Facility	SEC.26-T5N-R63W		

WELLPATH DATA (190 stations) † = interpolated/extrapolated station										
MD (ft)	Inclination (°)	Azimuth (°)	TVD (ft)	Vert Sect (ft)	North (ft)	East (ft)	Latitude	Longitude	DLS (°/100ft)	Comments
5035.00	33.240	107.190	4711.61	602.81	-371.44	1168.95	40°21'49.847"N	104°23'55.926"W	1.00	
5124.00	33.340	106.580	4786.00	626.26	-385.63	1215.69	40°21'49.707"N	104°23'55.322"W	0.39	
5214.00	33.260	105.990	4861.23	649.53	-399.49	1263.12	40°21'49.570"N	104°23'54.709"W	0.37	
5305.00	32.810	105.910	4937.52	672.64	-413.12	1310.82	40°21'49.435"N	104°23'54.093"W	0.50	
5396.00	33.390	105.230	5013.75	695.49	-426.46	1358.69	40°21'49.303"N	104°23'53.475"W	0.76	
5488.00	33.310	103.490	5090.60	717.79	-439.00	1407.68	40°21'49.179"N	104°23'52.842"W	1.04	
5577.00	33.840	103.290	5164.75	738.75	-450.40	1455.57	40°21'49.066"N	104°23'52.223"W	0.61	
5671.00	33.760	104.260	5242.86	761.33	-462.85	1506.35	40°21'48.943"N	104°23'51.567"W	0.58	
5765.00	33.880	105.300	5320.96	784.74	-476.19	1556.94	40°21'48.812"N	104°23'50.914"W	0.63	
5859.00	33.920	106.490	5398.98	809.12	-490.55	1607.36	40°21'48.670"N	104°23'50.262"W	0.71	
5953.00	33.430	108.110	5477.21	834.47	-506.05	1657.12	40°21'48.516"N	104°23'49.619"W	1.09	
6047.00	33.550	109.490	5555.60	860.88	-522.76	1706.22	40°21'48.351"N	104°23'48.985"W	0.82	
6141.00	33.100	110.810	5634.15	888.21	-540.55	1754.70	40°21'48.175"N	104°23'48.359"W	0.91	
6236.00	32.790	112.990	5713.87	916.87	-559.81	1802.63	40°21'47.985"N	104°23'47.740"W	1.29	
6330.00	33.830	114.140	5792.43	946.76	-580.45	1849.94	40°21'47.781"N	104°23'47.129"W	1.29	
6424.00	33.820	115.550	5870.52	978.00	-602.44	1897.42	40°21'47.564"N	104°23'46.515"W	0.84	
6518.00	33.850	116.750	5948.60	1010.19	-625.50	1944.40	40°21'47.336"N	104°23'45.908"W	0.71	
6612.00	36.580	125.430	6025.44	1047.10	-653.55	1990.64	40°21'47.059"N	104°23'45.311"W	6.06	
6706.00	42.020	137.030	6098.26	1094.69	-692.89	2035.00	40°21'46.670"N	104°23'44.738"W	9.71	
6800.00	48.860	145.490	6164.23	1154.39	-745.19	2076.59	40°21'46.153"N	104°23'44.201"W	9.69	
6894.00	57.550	152.850	6220.53	1225.49	-809.83	2114.84	40°21'45.514"N	104°23'43.707"W	11.16	
6942.00	62.720	155.880	6244.43	1265.90	-847.35	2132.82	40°21'45.143"N	104°23'43.475"W	12.08	
6986.00	66.750	159.610	6263.21	1305.02	-884.17	2147.86	40°21'44.780"N	104°23'43.280"W	11.94	
7077.00	75.440	169.470	6292.73	1390.73	-966.99	2170.57	40°21'43.961"N	104°23'42.987"W	14.00	
7170.00	83.580	178.310	6309.68	1481.55	-1057.75	2180.19	40°21'43.064"N	104°23'42.863"W	12.80	
7211.00†	87.718	180.175	6312.79	1521.66	-1098.62	2180.73	40°21'42.660"N	104°23'42.856"W	11.07	TOP OF PRODUCTION (478'FNL & 358'FEL, SEC.35-T05N-R63W, NENE, 40.361862, -104.395240)
7233.00	89.940	181.170	6313.24	1543.13	-1120.61	2180.47	40°21'42.443"N	104°23'42.859"W	11.07	
7264.00	90.030	180.590	6313.25	1573.38	-1151.61	2180.00	40°21'42.137"N	104°23'42.865"W	1.89	
7358.00	90.150	180.450	6313.10	1665.21	-1245.61	2179.14	40°21'41.208"N	104°23'42.877"W	0.20	
7452.00	90.030	180.910	6312.95	1756.98	-1339.60	2178.03	40°21'40.279"N	104°23'42.891"W	0.51	



Actual Wellpath Report

STATE NORTH PLATTE U41-35-1XRLNB AWP

Page 5 of 10



REFERENCE WELLPATH IDENTIFICATION			
Operator	BONANZA CREEK OIL COMPANY	Slot	SLOT#32 STATE NORTH PLATTE U41-35-1XRLNB (620'FSL & 2554'FEL, SEC.26)
Area	COLORADO	Well	STATE NORTH PLATTE U41-35-1XRLNB
Field	WELD COUNTY	Wellbore	STATE NORTH PLATTE U41-35-1XRLNB AWB
Facility	SEC.26-T5N-R63W		

WELLPATH DATA (190 stations)										
MD (ft)	Inclination (°)	Azimuth (°)	TVD (ft)	Vert Sect (ft)	North (ft)	East (ft)	Latitude	Longitude	DLS (°/100ft)	Comments
7546.00	90.220	180.310	6312.75	1848.78	-1433.59	2177.03	40°21'39.350"N	104°23'42.904"W	0.67	
7640.00	90.280	181.000	6312.34	1940.57	-1527.59	2175.95	40°21'38.422"N	104°23'42.918"W	0.74	
7734.00	89.940	182.210	6312.16	2032.00	-1621.55	2173.32	40°21'37.493"N	104°23'42.952"W	1.34	
7828.00	90.120	183.330	6312.11	2122.97	-1715.43	2168.78	40°21'36.565"N	104°23'43.011"W	1.21	
7922.00	90.060	183.140	6311.96	2213.75	-1809.29	2163.47	40°21'35.638"N	104°23'43.080"W	0.21	
8016.00	89.970	181.600	6311.94	2304.88	-1903.20	2159.58	40°21'34.710"N	104°23'43.130"W	1.64	
8110.00	90.030	180.550	6311.94	2396.51	-1997.18	2157.82	40°21'33.781"N	104°23'43.153"W	1.12	
8204.00	89.910	179.910	6311.98	2488.45	-2091.18	2157.44	40°21'32.852"N	104°23'43.158"W	0.69	
8298.00	90.180	179.990	6311.91	2580.47	-2185.18	2157.53	40°21'31.923"N	104°23'43.157"W	0.30	
8391.00	90.030	178.310	6311.74	2671.77	-2278.17	2158.91	40°21'31.004"N	104°23'43.139"W	1.81	
8485.00	89.910	175.620	6311.79	2764.67	-2372.03	2163.88	40°21'30.077"N	104°23'43.075"W	2.86	
8579.00	90.220	177.720	6311.68	2857.63	-2465.86	2169.34	40°21'29.150"N	104°23'43.005"W	2.26	
8672.00	89.850	183.200	6311.63	2948.47	-2558.83	2168.60	40°21'28.231"N	104°23'43.014"W	5.91	
8766.00	89.820	176.070	6311.90	3040.55	-2652.76	2169.19	40°21'27.303"N	104°23'43.007"W	7.59	
8860.00	89.690	174.640	6312.30	3133.81	-2746.45	2176.81	40°21'26.377"N	104°23'42.909"W	1.53	
8953.00	91.540	176.330	6311.30	3226.04	-2839.15	2184.13	40°21'25.461"N	104°23'42.814"W	2.69	
9047.00	91.540	176.270	6308.77	3319.07	-2932.92	2190.19	40°21'24.534"N	104°23'42.736"W	0.06	
9141.00	91.540	176.720	6306.25	3412.05	-3026.71	2195.93	40°21'23.608"N	104°23'42.662"W	0.48	
9234.00	91.600	177.140	6303.70	3503.94	-3119.54	2200.91	40°21'22.690"N	104°23'42.598"W	0.46	
9328.00	90.620	176.120	6301.88	3596.90	-3213.36	2206.44	40°21'21.763"N	104°23'42.526"W	1.50	
9422.00	90.150	176.000	6301.25	3690.01	-3307.13	2212.90	40°21'20.836"N	104°23'42.443"W	0.52	
9516.00	89.510	177.200	6301.53	3783.00	-3400.97	2218.47	40°21'19.909"N	104°23'42.371"W	1.45	
9610.00	89.480	177.940	6302.36	3875.74	-3494.88	2222.46	40°21'18.981"N	104°23'42.320"W	0.79	
9704.00	90.030	179.250	6302.76	3968.19	-3588.85	2224.76	40°21'18.053"N	104°23'42.290"W	1.51	
9798.00	90.180	180.560	6302.58	4060.23	-3682.84	2224.92	40°21'17.124"N	104°23'42.288"W	1.40	
9892.00	89.910	180.460	6302.51	4152.06	-3776.84	2224.08	40°21'16.195"N	104°23'42.299"W	0.31	
9986.00	89.970	180.530	6302.61	4243.90	-3870.84	2223.27	40°21'15.266"N	104°23'42.310"W	0.10	
10080.00	89.940	181.030	6302.68	4335.64	-3964.83	2221.99	40°21'14.337"N	104°23'42.326"W	0.53	
10174.00	89.970	179.970	6302.76	4427.48	-4058.82	2221.17	40°21'13.409"N	104°23'42.337"W	1.13	
10267.00	90.090	180.830	6302.71	4518.38	-4151.82	2220.52	40°21'12.490"N	104°23'42.345"W	0.93	



Actual Wellpath Report

STATE NORTH PLATTE U41-35-1XRLNB AWP

Page 6 of 10



REFERENCE WELLPATH IDENTIFICATION			
Operator	BONANZA CREEK OIL COMPANY	Slot	SLOT#32 STATE NORTH PLATTE U41-35-1XRLNB (620'FSL & 2554'FEL, SEC.26)
Area	COLORADO	Well	STATE NORTH PLATTE U41-35-1XRLNB
Field	WELD COUNTY	Wellbore	STATE NORTH PLATTE U41-35-1XRLNB AWB
Facility	SEC.26-T5N-R63W		

WELLPATH DATA (190 stations)										
MD (ft)	Inclination (°)	Azimuth (°)	TVD (ft)	Vert Sect (ft)	North (ft)	East (ft)	Latitude	Longitude	DLS (°/100ft)	Comments
10361.00	89.970	184.420	6302.66	4609.40	-4245.70	2216.22	40°21'11.562"N	104°23'42.401"W	3.82	
10455.00	90.030	183.290	6302.66	4699.90	-4339.49	2209.90	40°21'10.635"N	104°23'42.483"W	1.20	
10549.00	89.910	180.120	6302.71	4791.29	-4433.44	2207.10	40°21'09.707"N	104°23'42.519"W	3.37	
10643.00	90.090	181.650	6302.71	4882.99	-4527.42	2205.65	40°21'08.778"N	104°23'42.538"W	1.64	
10737.00	90.090	182.350	6302.56	4974.27	-4621.36	2202.37	40°21'07.850"N	104°23'42.581"W	0.74	
10830.00	89.970	185.760	6302.51	5063.72	-4714.12	2195.79	40°21'06.933"N	104°23'42.666"W	3.67	
10924.00	89.850	183.660	6302.66	5153.83	-4807.80	2188.07	40°21'06.007"N	104°23'42.765"W	2.24	
11018.00	89.880	181.090	6302.88	5244.96	-4901.71	2184.18	40°21'05.079"N	104°23'42.816"W	2.73	
11112.00	90.000	180.830	6302.98	5336.63	-4995.69	2182.60	40°21'04.151"N	104°23'42.836"W	0.30	
11206.00	90.000	180.460	6302.98	5428.42	-5089.69	2181.54	40°21'03.222"N	104°23'42.850"W	0.39	
11299.00	90.030	180.120	6302.96	5519.35	-5182.69	2181.07	40°21'02.303"N	104°23'42.856"W	0.37	
11393.00	89.690	179.510	6303.19	5611.42	-5276.68	2181.38	40°21'01.374"N	104°23'42.852"W	0.74	
11487.00	89.970	176.460	6303.46	5704.04	-5370.61	2184.68	40°21'00.446"N	104°23'42.810"W	3.26	
11581.00	90.090	176.750	6303.41	5797.03	-5464.45	2190.25	40°20'59.519"N	104°23'42.738"W	0.33	
11675.00	90.030	176.560	6303.32	5890.01	-5558.29	2195.73	40°20'58.591"N	104°23'42.667"W	0.21	
11863.00	90.060	170.460	6303.17	6077.11	-5745.00	2216.97	40°20'56.746"N	104°23'42.393"W	3.24	
11956.00	90.150	179.180	6303.00	6169.40	-5837.53	2225.36	40°20'55.832"N	104°23'42.285"W	9.38	
12050.00	90.000	183.120	6302.87	6260.99	-5931.49	2223.48	40°20'54.903"N	104°23'42.309"W	4.19	
12144.00	89.780	179.110	6303.06	6352.59	-6025.45	2221.65	40°20'53.975"N	104°23'42.333"W	4.27	
12237.00	90.180	177.900	6303.09	6444.08	-6118.42	2224.07	40°20'53.056"N	104°23'42.302"W	1.37	
12331.00	89.780	177.670	6303.12	6536.77	-6212.35	2227.71	40°20'52.128"N	104°23'42.255"W	0.49	
12425.00	89.910	176.870	6303.37	6629.59	-6306.24	2232.18	40°20'51.200"N	104°23'42.197"W	0.86	
12518.00	90.060	178.770	6303.40	6721.27	-6399.17	2235.72	40°20'50.282"N	104°23'42.152"W	2.05	
12612.00	89.970	181.140	6303.37	6813.29	-6493.16	2235.79	40°20'49.353"N	104°23'42.151"W	2.52	
12706.00	89.820	183.780	6303.55	6904.38	-6587.07	2231.76	40°20'48.425"N	104°23'42.203"W	2.81	
12800.00	89.940	186.210	6303.74	6994.36	-6680.70	2223.58	40°20'47.500"N	104°23'42.309"W	2.59	
12894.00	89.910	184.960	6303.87	7084.06	-6774.25	2214.43	40°20'46.575"N	104°23'42.427"W	1.33	
12988.00	89.880	184.110	6304.04	7174.26	-6867.96	2207.00	40°20'45.649"N	104°23'42.523"W	0.90	
13082.00	90.150	183.230	6304.01	7264.85	-6961.77	2200.98	40°20'44.722"N	104°23'42.601"W	0.98	
13176.00	89.880	183.230	6303.99	7355.63	-7055.62	2195.68	40°20'43.795"N	104°23'42.670"W	0.29	



Actual Wellpath Report

STATE NORTH PLATTE U41-35-1XRLNB AWP

Page 7 of 10



REFERENCE WELLPATH IDENTIFICATION			
Operator	BONANZA CREEK OIL COMPANY	Slot	SLOT#32 STATE NORTH PLATTE U41-35-1XRLNB (620'FSL & 2554'FEL, SEC.26)
Area	COLORADO	Well	STATE NORTH PLATTE U41-35-1XRLNB
Field	WELD COUNTY	Wellbore	STATE NORTH PLATTE U41-35-1XRLNB AWB
Facility	SEC.26-T5N-R63W		

WELLPATH DATA (190 stations)										
MD (ft)	Inclination [°]	Azimuth [°]	TVD (ft)	Vert Sect (ft)	North (ft)	East (ft)	Latitude	Longitude	DLS (°/100ft)	Comments
13270.00	89.940	182.800	6304.14	7446.50	-7149.49	2190.74	40°20'42.867"N	104°23'42.734"W	0.46	
13364.00	89.940	183.180	6304.24	7537.39	-7243.36	2185.84	40°20'41.940"N	104°23'42.797"W	0.40	
13458.00	90.280	181.200	6304.06	7628.59	-7337.28	2182.24	40°20'41.012"N	104°23'42.844"W	2.14	
13552.00	90.220	175.500	6303.64	7721.08	-7431.20	2184.95	40°20'40.084"N	104°23'42.809"W	6.06	
13644.00	89.970	173.570	6303.49	7812.51	-7522.78	2193.71	40°20'39.179"N	104°23'42.696"W	2.12	
13736.00	89.850	173.850	6303.64	7904.08	-7614.23	2203.79	40°20'38.275"N	104°23'42.566"W	0.33	
13826.00	90.150	175.230	6303.64	7993.53	-7703.82	2212.35	40°20'37.390"N	104°23'42.455"W	1.57	
13914.00	89.940	175.820	6303.57	8080.81	-7791.55	2219.22	40°20'36.523"N	104°23'42.367"W	0.71	
14002.00	89.880	174.060	6303.71	8168.19	-7879.20	2226.98	40°20'35.657"N	104°23'42.266"W	2.00	
14090.00	90.150	175.770	6303.68	8255.58	-7966.85	2234.78	40°20'34.790"N	104°23'42.166"W	1.97	
14179.00	90.090	179.770	6303.50	8343.33	-8055.77	2238.24	40°20'33.912"N	104°23'42.121"W	4.49	
14269.00	90.090	182.880	6303.36	8430.96	-8145.73	2236.16	40°20'33.023"N	104°23'42.148"W	3.46	
14360.00	89.910	180.310	6303.36	8519.47	-8236.69	2233.63	40°20'32.124"N	104°23'42.181"W	2.83	
14451.00	90.030	176.180	6303.40	8609.06	-8327.63	2236.42	40°20'31.225"N	104°23'42.145"W	4.54	
14540.00	90.120	178.390	6303.29	8696.93	-8416.52	2240.63	40°20'30.347"N	104°23'42.091"W	2.49	
14632.00	89.970	180.080	6303.21	8787.23	-8508.51	2241.86	40°20'29.438"N	104°23'42.075"W	1.84	
14724.00	90.060	179.700	6303.19	8877.31	-8600.51	2242.04	40°20'28.529"N	104°23'42.073"W	0.42	
14815.00	90.180	183.490	6303.00	8965.82	-8691.46	2239.50	40°20'27.630"N	104°23'42.106"W	4.17	
14903.00	90.220	186.410	6302.69	9050.07	-8779.12	2231.91	40°20'26.764"N	104°23'42.204"W	3.32	
14993.00	90.120	185.190	6302.42	9135.85	-8868.66	2222.82	40°20'25.879"N	104°23'42.321"W	1.36	
15084.00	90.120	184.260	6302.23	9223.09	-8959.35	2215.32	40°20'24.983"N	104°23'42.418"W	1.02	
15172.00	90.090	183.790	6302.07	9307.75	-9047.13	2209.14	40°20'24.115"N	104°23'42.498"W	0.54	
15261.00	90.030	183.990	6301.98	9393.43	-9135.92	2203.11	40°20'23.238"N	104°23'42.576"W	0.23	
15441.00	90.030	182.300	6301.89	9567.33	-9315.64	2193.23	40°20'21.462"N	104°23'42.704"W	0.94	
15533.00	90.030	175.990	6301.84	9657.60	-9407.59	2194.60	40°20'20.553"N	104°23'42.686"W	6.86	
15622.00	89.510	174.930	6302.19	9745.89	-9496.31	2201.65	40°20'19.677"N	104°23'42.595"W	1.33	
15712.00	89.970	177.300	6302.60	9835.02	-9586.09	2207.74	40°20'18.790"N	104°23'42.517"W	2.68	
15801.00	89.880	180.720	6302.72	9922.42	-9675.07	2209.28	40°20'17.910"N	104°23'42.497"W	3.84	
15892.00	89.880	182.010	6302.91	10011.03	-9766.04	2207.11	40°20'17.011"N	104°23'42.525"W	1.42	
15981.00	89.880	182.580	6303.10	10097.34	-9854.97	2203.55	40°20'16.133"N	104°23'42.571"W	0.64	



Actual Wellpath Report

STATE NORTH PLATTE U41-35-1XRLNB AWP

Page 8 of 10



REFERENCE WELLPATH IDENTIFICATION			
Operator	BONANZA CREEK OIL COMPANY	Slot	SLOT#32 STATE NORTH PLATTE U41-35-1XRLNB (620'FSL & 2554'FEL, SEC.26)
Area	COLORADO	Well	STATE NORTH PLATTE U41-35-1XRLNB
Field	WELD COUNTY	Wellbore	STATE NORTH PLATTE U41-35-1XRLNB AWB
Facility	SEC.26-T5N-R63W		

WELLPATH DATA (190 stations)										
MD [ft]	Inclination [°]	Azimuth [°]	TVD [ft]	Vert Sect [ft]	North [ft]	East [ft]	Latitude	Longitude	DLS [°/100ft]	Comments
16070.00	89.720	181.560	6303.41	10183.74	-9943.91	2200.34	40°20'15.254"N	104°23'42.613"W	1.16	
16161.00	90.030	179.590	6303.61	10272.62	-10034.90	2199.42	40°20'14.355"N	104°23'42.625"W	2.19	
16251.00	89.940	177.760	6303.63	10361.12	-10124.87	2201.50	40°20'13.465"N	104°23'42.598"W	2.04	
16343.00	90.180	175.710	6303.53	10452.09	-10216.71	2206.74	40°20'12.558"N	104°23'42.530"W	2.24	
16432.00	90.060	176.560	6303.35	10540.23	-10305.51	2212.74	40°20'11.680"N	104°23'42.453"W	0.96	
16517.00	90.090	176.730	6303.24	10624.31	-10390.37	2217.72	40°20'10.842"N	104°23'42.389"W	0.20	
16608.00	90.060	176.680	6303.12	10714.31	-10481.21	2222.95	40°20'09.944"N	104°23'42.321"W	0.06	
16700.00	90.220	176.700	6302.89	10805.30	-10573.06	2228.26	40°20'09.037"N	104°23'42.253"W	0.18	
16784.00	90.120	176.650	6302.64	10888.38	-10656.92	2233.13	40°20'08.208"N	104°23'42.190"W	0.13	LAST BHI MWD SURVEY
16809.00	90.120	176.650	6302.59	10913.11	-10681.88	2234.59	40°20'07.961"N	104°23'42.171"W	0.00	5.5" CASING/PROJECTION TO BIT (483'FSL & 214'FWL, SEC.01-T04N-R63W, SWSW, 40.335552,-104.395044)

HOLE & CASING SECTIONS - Ref Wellbore: STATE NORTH PLATTE U41-35-1XRLNB AWB Ref Wellpath: STATE NORTH PLATTE U41-35-1XRLNB AWP									
String/Diameter	Start MD [ft]	End MD [ft]	Interval [ft]	Start TVD [ft]	End TVD [ft]	Start N/S [ft]	Start E/W [ft]	End N/S [ft]	End E/W [ft]
9.625in Casing Surface	17.00	1502.00	1485.00	17.00	1501.94	0.00	0.00	-2.32	-1.70
8.5in Open Hole	1502.00	16809.00	15307.00	1501.94	6302.59	-2.32	-1.70	-10681.88	2234.59

TARGETS								
Name	TVD [ft]	North [ft]	East [ft]	Grid East [US ft]	Grid North [US ft]	Latitude	Longitude	Shape
SEC.26-T05N-R63W	-19.00	4103.05	-1532.72	3304075.56	1381735.41	40°22'34.062"N	104°24'30.831"W	polygon
SEC.02-T4N-R63W	-5.00	832.11	-1122.71	3304525.98	1378469.93	40°22'01.740"N	104°24'25.531"W	polygon
SEC.35-T5N-R63W	-5.00	832.11	-1122.71	3304525.98	1378469.93	40°22'01.740"N	104°24'25.531"W	polygon
SEC.01-T04N-R63W	0.00	0.34	1.38	3305660.22	1377652.17	40°21'53.521"N	104°24'11.009"W	polygon
NORTH PLATTE U41-35-1XRLNB BHL REV-2 (470'FSL & 214'FWL, SEC.01)	6275.00	-10692.12	2235.47	3308026.31	1366988.62	40°20'07.860"N	104°23'42.160"W	point
NORTH PLATTE U41-35-1XRLNB LP REV-2 (470'FNL & 355'FEL, SEC.35)	6275.00	-1086.52	2183.51	3307855.54	1376592.43	40°21'42.780"N	104°23'42.820"W	point
NORTH PLATTE U41-35-1XRLNB MID LATERAL REV-1 (0'FSL & 275'FEL, SEC.35)	6275.00	-5801.28	2204.83	3307935.18	1371878.49	40°20'56.190"N	104°23'42.550"W	point
NORTH PLATTE U41-35-1XRLNB BHL REV-3 (470'FSL & 214'FWL, SEC.01)	6313.00	-10692.12	2235.47	3308026.31	1366988.62	40°20'07.860"N	104°23'42.160"W	point
NORTH PLATTE U41-35-1XRLNB LP REV-3 (470'FNL & 355'FEL, SEC.35)	6313.00	-1086.52	2183.51	3307855.54	1376592.43	40°21'42.780"N	104°23'42.820"W	point
NORTH PLATTE U41-35-1XRLNB MID LATERAL REV-2 (0'FSL & 275'FEL, SEC.35)	6313.00	-5801.28	2204.83	3307935.18	1371878.49	40°20'56.190"N	104°23'42.550"W	point
SEC.01-T04N-R63W (460'FSL)	6539.00	0.34	1.38	3305660.22	1377652.17	40°21'53.521"N	104°24'11.009"W	polygon
SEC.02-T4N-R63W 460'SETBACK	6539.00	832.11	-1122.71	3304525.98	1378469.93	40°22'01.740"N	104°24'25.531"W	polygon

TARGETS								
Name	TVD [ft]	North [ft]	East [ft]	Grid East [US ft]	Grid North [US ft]	Latitude	Longitude	Shape
SEC.26-T05N-R63W 460' SETBACK	6539.00	4103.05	-1532.72	3304075.56	1381735.41	40°22'34.062"N	104°24'30.831"W	polygon
SEC.35-T5N-R63W 460'SETBACK	6539.00	832.11	-1122.71	3304525.98	1378469.93	40°22'01.740"N	104°24'25.531"W	polygon



Actual Wellpath Report

STATE NORTH PLATTE U41-35-1XRLNB AWP

Page 9 of 10



REFERENCE WELLPATH IDENTIFICATION			
Operator	BONANZA CREEK OIL COMPANY	Slot	SLOT#32 STATE NORTH PLATTE U41-35-1XRLNB (620'FSL & 2554'FEL, SEC.26)
Area	COLORADO	Well	STATE NORTH PLATTE U41-35-1XRLNB
Field	WELD COUNTY	Wellbore	STATE NORTH PLATTE U41-35-1XRLNB AWB
Facility	SEC.26-T5N-R63W		

WELLPATH COMPOSITION - Ref Wellbore: STATE NORTH PLATTE U41-35-1XRLNB AWB Ref Wellpath: STATE NORTH PLATTE U41-35-1XRLNB AWP				
Start MD [ft]	End MD [ft]	Positional Uncertainty Model	Log Name/Comment	Wellbore
17.00	1460.00	Custom BHI NaviTrak (Standard Rotating+Axial Corr) (Rockies 0.03Gt model)	BHI MWD NAVITRAK +SR+AC+ROCKIES <135-1460>	STATE NORTH PLATTE U41-35-1XRLNB AWB
1460.00	16784.00	BHI AutoTrak Curve (Axial Corr, Short spacing)	BHI MWD ATCURVE + AC+SS <1518-16784>	STATE NORTH PLATTE U41-35-1XRLNB AWB
16784.00	16809.00	Blind Drilling (std)	Projection to bit	STATE NORTH PLATTE U41-35-1XRLNB AWB



Actual Wellpath Report

STATE NORTH PLATTE U41-35-1XRLNB AWP

Page 10 of 10



REFERENCE WELLPATH IDENTIFICATION			
Operator	BONANZA CREEK OIL COMPANY	Slot	SLOT#32 STATE NORTH PLATTE U41-35-1XRLNB (620'FSL & 2554'FEL, SEC.26)
Area	COLORADO	Well	STATE NORTH PLATTE U41-35-1XRLNB
Field	WELD COUNTY	Wellbore	STATE NORTH PLATTE U41-35-1XRLNB AWB
Facility	SEC.26-T5N-R63W		

WELLPATH COMMENTS				
MD [ft]	Inclination [°]	Azimuth [°]	TVD [ft]	Comment
135.00	0.400	273.760	135.00	FIRST BHI MWD SURVEY
7211.00	87.718	180.175	6312.79	TOP OF PRODUCTION (478'FNL & 358'FEL, SEC.35-T05N-R63W, NENE, 40.361862, -104.395240)
16784.00	90.120	176.650	6302.64	LAST BHI MWD SURVEY
16809.00	90.120	176.650	6302.59	5.5" CASING/PROJECTION TO BIT (483'FSL & 214'FWL, SEC.01-T04N-R63W, SWSW, 40.335552,-104.395044)

COMMENTS	
Wellpath general comments	
TOP OF PRODUCTION (478'FNL & 358'FEL, SEC.35-T05N-R63W, NENE, 40.361862, -104.395240)	
5.5" CASING/PROJECTION TO BIT (483'FSL & 214'FWL, SEC.01-T04N-R63W, SWSW, 40.335552,-104.395044)	