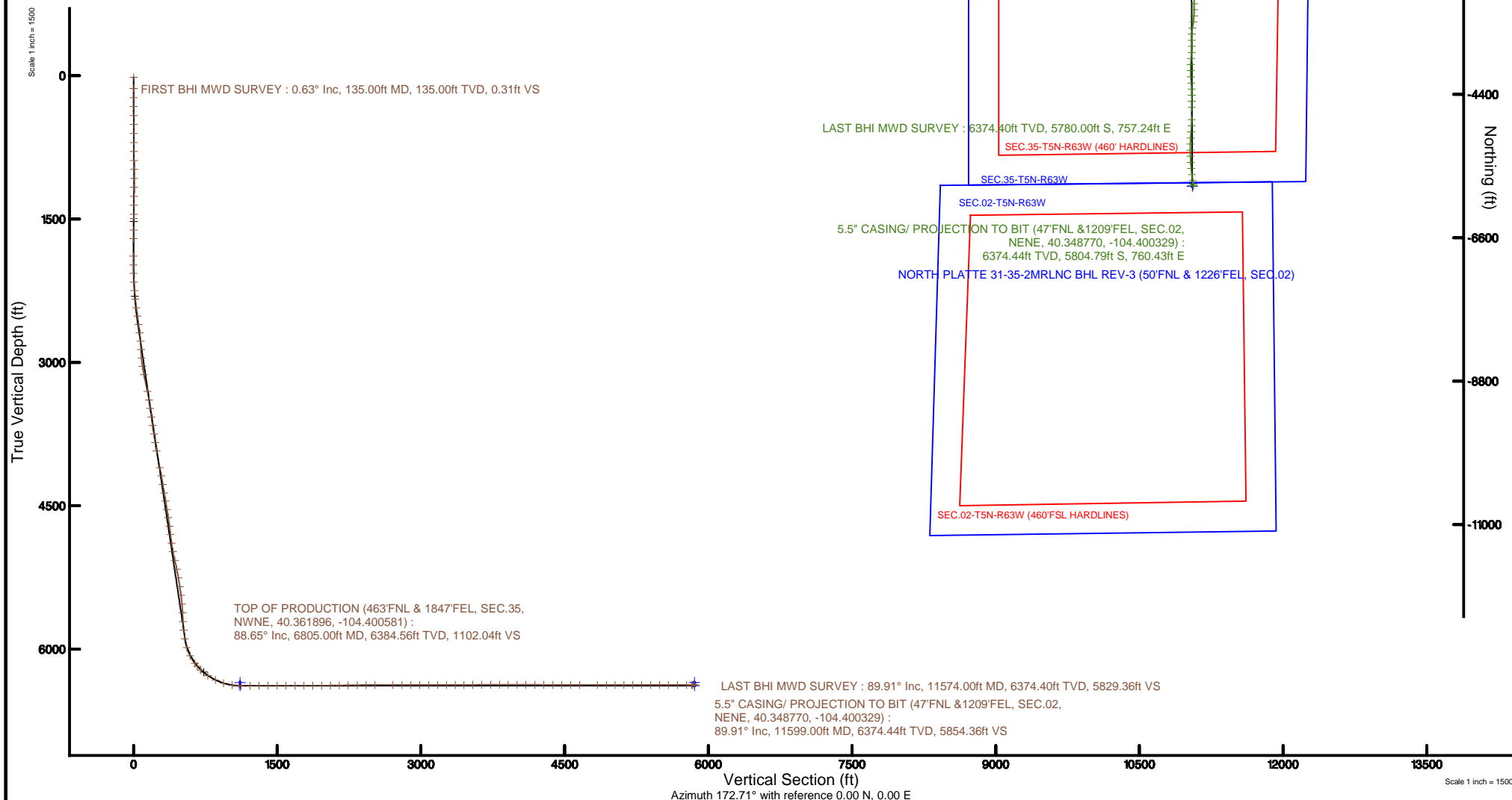


# BONANZA CREEK OIL COMPANY

Location: COLORADO Slot: SLOT#29 NORTH PLATTE 31-35-2MRLNC (559'FSL & 2552'FEL, SEC.26)  
Field: WELD COUNTY Well: NORTH PLATTE 31-35-2MRLNC  
Facility: SEC.26-T5N-R63W Wellbore: NORTH PLATTE 31-35-2MRLNC PWB

Plot reference wellpath is NORTH PLATTE 31-35-2MRLNC PWP (REV-C.0)	
True vertical depths are referenced to RIG (4550'GL + 17'RKb) (RKB)	Grid System: NAD83 / Lambert Colorado SP, Northern Zone (501), US feet
Measured depths are referenced to RIG (4550'GL + 17'RKb) (RKB)	* = Wellpath was transformed from a different geodetic datum
RIG (4550'GL + 17'RKb) (RKB) to Mean Sea Level: 4567 feet	North Reference: True north
Mean Sea Level to Mud line (At Slot: SLOT#29 NORTH PLATTE 31-35-2MRLNC (559'FSL & 2552'FEL, SEC.26)): 0 feet	Scale: True distance
Coordinates are in feet referenced to Slot	Depths are in feet
	Created by: ingnjann on 2018-05-30
	Database: Denver





# Actual Wellpath Report

NORTH PLATTE 31-35-2MRLNC AWP

Page 1 of 9

**BAKER  
HUGHES**  
a GE company



## REFERENCE WELLPATH IDENTIFICATION

Operator	BONANZA CREEK OIL COMPANY	Slot	SLOT#29 NORTH PLATTE 31-35-2MRLNC (559'FSL & 2552'FEL, SEC.26)
Area	COLORADO	Well	NORTH PLATTE 31-35-2MRLNC
Field	WELD COUNTY	Wellbore	NORTH PLATTE 31-35-2MRLNC AWB
Facility	SEC.26-T5N-R63W		

## REPORT SETUP INFORMATION

Projection System	NAD83 / Lambert Colorado SP, Northern Zone (501), US feet	Software System	WellArchitect® 5.0
North Reference	True	User	Ingmjmr
Scale	0.999959	Report Generated	5/30/2018 at 11:25:56 AM
Convergence at slot	0.71° East	Database/Source file	Denver/NORTH_PLATTE_31-35-2MRLNC_AWP.xml

## WELLPATH LOCATION

	Local coordinates		Grid coordinates		Geographic coordinates	
	North[ft]	East[ft]	Easting[US ft]	Northing[US ft]	Latitude	Longitude
Slot Location	-4204.08	1658.35	3305660.71	1377591.35	40°21'52.920"N	104°24'11.012"W
Facility Reference Pt			3303950.84	1381774.54	40°22'34.464"N	104°24'32.436"W
Field Reference Pt			3224525.77	1254425.87	40°01'44.400"N	104°41'53.556"W

## WELLPATH DATUM

Calculation method	Minimum curvature	RIG (4550'GL + 17'RKB) (RKB) to Facility Vertical Datum	4567.00ft
Horizontal Reference Pt	Slot	RIG (4550'GL + 17'RKB) (RKB) to Mean Sea Level	4567.00ft
Vertical Reference Pt	RIG (4550'GL + 17'RKB) (RKB)	RIG (4550'GL + 17'RKB) (RKB) to Mud Line at Slot (SLOT#29 NORTH PLATTE 31-35-2MRLNC (559'FSL & 2552'FEL, SEC.26))	4567.00ft
MD Reference Pt	RIG (4550'GL + 17'RKB) (RKB)	Section Origin	N 0.00, E 0.00 ft
Field Vertical Reference	Mean Sea Level	Section Azimuth	172.71°



# Actual Wellpath Report

NORTH PLATTE 31-35-2MRLNC AWP

Page 2 of 9



## REFERENCE WELLPATH IDENTIFICATION

Operator	BONANZA CREEK OIL COMPANY	Slot	SLOT#29 NORTH PLATTE 31-35-2MRLNC (559'FSL & 2552'FEL, SEC.26)
Area	COLORADO	Well	NORTH PLATTE 31-35-2MRLNC
Field	WELD COUNTY	Wellbore	NORTH PLATTE 31-35-2MRLNC AWP
Facility	SEC.26-T5N-R63W		

## WELLPATH DATA (125 stations) † = interpolated/extrapolated station

MD [ft]	Inclination [°]	Azimuth [°]	TVD [ft]	Vert Sect [ft]	North [ft]	East [ft]	Latitude	Longitude	DLS [°/100ft]	Comments
0.00†	0.000	111.700	0.00	0.00	0.00	0.00	40°21'52.920°N	104°24'11.012°W	0.00	
17.00	0.000	111.700	17.00	0.00	0.00	0.00	40°21'52.920°N	104°24'11.012°W	0.00	
135.00	0.630	111.700	135.00	0.31	-0.24	0.60	40°21'52.918°N	104°24'11.005°W	0.53	FIRST BHI MWD SURVEY
229.00	0.570	133.810	228.99	0.93	-0.75	1.42	40°21'52.913°N	104°24'10.994°W	0.25	
323.00	0.380	124.450	322.99	1.50	-1.25	2.01	40°21'52.908°N	104°24'10.986°W	0.22	
417.00	0.680	126.220	416.99	2.09	-1.76	2.72	40°21'52.903°N	104°24'10.977°W	0.32	
511.00	0.620	137.640	510.98	2.89	-2.47	3.51	40°21'52.896°N	104°24'10.967°W	0.15	
605.00	0.500	133.510	604.97	3.63	-3.12	4.15	40°21'52.889°N	104°24'10.959°W	0.13	
699.00	0.270	245.540	698.97	4.01	-3.50	4.25	40°21'52.885°N	104°24'10.957°W	0.69	
793.00	0.570	250.600	792.97	4.17	-3.75	3.61	40°21'52.883°N	104°24'10.966°W	0.32	
887.00	0.660	233.730	886.97	4.53	-4.22	2.73	40°21'52.878°N	104°24'10.977°W	0.21	
981.00	0.740	246.250	980.96	4.97	-4.79	1.74	40°21'52.873°N	104°24'10.990°W	0.18	
1075.00	0.840	272.200	1074.95	5.03	-5.00	0.49	40°21'52.871°N	104°24'11.006°W	0.39	
1169.00	0.850	268.430	1168.94	4.84	-5.00	-0.89	40°21'52.871°N	104°24'11.024°W	0.06	
1262.00	0.690	324.290	1261.93	4.28	-4.56	-1.91	40°21'52.875°N	104°24'11.037°W	0.79	
1356.00	1.090	49.960	1355.92	3.30	-3.53	-1.55	40°21'52.885°N	104°24'11.032°W	1.32	
1450.00	1.210	55.850	1449.91	2.37	-2.39	-0.05	40°21'52.896°N	104°24'11.013°W	0.18	
1495.00	1.220	61.610	1494.90	1.98	-1.90	0.77	40°21'52.901°N	104°24'11.002°W	0.27	
1616.00	1.350	65.810	1615.86	1.10	-0.70	3.20	40°21'52.913°N	104°24'10.971°W	0.13	
1706.00	1.850	14.490	1705.83	-0.55	1.14	4.53	40°21'52.931°N	104°24'10.954°W	1.62	
1888.00	1.670	252.380	1887.79	-2.81	3.18	2.74	40°21'52.951°N	104°24'10.977°W	1.69	
1980.00	0.180	84.480	1979.78	-2.56	2.79	1.60	40°21'52.948°N	104°24'10.992°W	2.01	
2069.00	1.590	165.560	2068.77	-1.33	1.61	2.05	40°21'52.936°N	104°24'10.986°W	1.77	
2161.00	3.860	150.000	2160.66	2.79	-2.31	3.92	40°21'52.897°N	104°24'10.962°W	2.57	
2250.00	6.050	138.830	2249.32	9.45	-8.44	8.50	40°21'52.837°N	104°24'10.903°W	2.68	
2340.00	7.910	134.860	2338.65	18.28	-16.38	16.02	40°21'52.758°N	104°24'10.805°W	2.13	
2430.00	8.950	139.740	2427.68	29.04	-26.09	24.93	40°21'52.662°N	104°24'10.690°W	1.40	
2520.00	9.800	130.850	2516.48	40.62	-36.44	35.25	40°21'52.560°N	104°24'10.557°W	1.86	
2608.00	11.880	128.910	2602.91	52.74	-47.03	47.96	40°21'52.455°N	104°24'10.393°W	2.40	
2699.00	12.700	114.030	2691.84	64.70	-56.99	64.39	40°21'52.357°N	104°24'10.181°W	3.58	



# Actual Wellpath Report

NORTH PLATTE 31-35-2MRLNC AWP

Page 3 of 9



## REFERENCE WELLPATH IDENTIFICATION

Operator	BONANZA CREEK OIL COMPANY	Slot	SLOT#29 NORTH PLATTE 31-35-2MRLNC (559'FSL & 2552'FEL, SEC.26)
Area	COLORADO	Well	NORTH PLATTE 31-35-2MRLNC
Field	WELD COUNTY	Wellbore	NORTH PLATTE 31-35-2MRLNC AWP
Facility	SEC.26-T5N-R63W		

## WELLPATH DATA (125 stations)

MD [ft]	Inclination [°]	Azimuth [°]	TVD [ft]	Vert Sect [ft]	North [ft]	East [ft]	Latitude	Longitude	DLS [°/100ft]	Comments
2788.00	13.410	99.600	2778.57	72.79	-62.70	83.51	40°21'52.300"N	104°24'09.934"W	3.74	
2877.00	11.660	91.870	2865.45	77.22	-64.71	102.68	40°21'52.281"N	104°24'09.686"W	2.72	
2967.00	11.790	112.860	2953.61	83.29	-68.58	120.25	40°21'52.242"N	104°24'09.459"W	4.72	
3056.00	10.310	132.480	3040.99	93.95	-77.50	134.51	40°21'52.154"N	104°24'09.275"W	4.51	
3146.00	11.740	151.350	3129.35	108.63	-90.98	144.84	40°21'52.021"N	104°24'09.141"W	4.29	
3325.00	13.120	153.650	3304.15	144.79	-125.16	162.59	40°21'51.683"N	104°24'08.912"W	0.82	
3416.00	13.070	120.440	3392.91	160.87	-139.65	176.06	40°21'51.540"N	104°24'08.738"W	8.16	
3506.00	12.720	117.940	3480.64	172.82	-149.45	193.59	40°21'51.443"N	104°24'08.511"W	0.73	
3598.00	12.650	124.680	3570.40	185.40	-159.93	210.82	40°21'51.340"N	104°24'08.289"W	1.61	
3690.00	12.570	127.670	3660.18	199.21	-171.78	227.03	40°21'51.223"N	104°24'08.079"W	0.71	
3782.00	12.720	120.650	3749.96	212.51	-183.06	243.67	40°21'51.111"N	104°24'07.865"W	1.68	
3872.00	12.440	123.920	3837.80	224.99	-193.52	260.24	40°21'51.008"N	104°24'07.650"W	0.85	
3963.00	11.770	140.910	3926.80	239.34	-206.20	274.23	40°21'50.882"N	104°24'07.470"W	3.97	
4142.00	12.740	150.340	4101.74	273.12	-237.52	295.51	40°21'50.573"N	104°24'07.195"W	1.24	
4230.00	12.760	135.080	4187.59	289.79	-252.84	307.18	40°21'50.421"N	104°24'07.044"W	3.82	
4321.00	13.050	129.870	4276.30	305.29	-266.54	322.16	40°21'50.286"N	104°24'06.851"W	1.32	
4413.00	13.100	127.880	4365.91	320.30	-279.60	338.36	40°21'50.157"N	104°24'06.641"W	0.49	
4500.00	13.130	127.790	4450.65	334.29	-291.71	353.95	40°21'50.037"N	104°24'06.440"W	0.04	
4590.00	13.150	124.970	4538.29	348.41	-303.84	370.42	40°21'49.917"N	104°24'06.227"W	0.71	
4679.00	13.200	123.670	4624.95	361.88	-315.28	387.17	40°21'49.804"N	104°24'06.011"W	0.34	
4770.00	12.810	119.530	4713.61	374.74	-326.01	404.60	40°21'49.698"N	104°24'05.786"W	1.11	
4861.00	12.080	116.480	4802.48	386.08	-335.23	421.90	40°21'49.607"N	104°24'05.562"W	1.08	
4953.00	10.100	131.020	4892.77	397.46	-344.82	436.61	40°21'49.513"N	104°24'05.372"W	3.71	
5042.00	11.660	152.260	4980.20	411.72	-357.91	446.68	40°21'49.383"N	104°24'05.242"W	4.80	
5137.00	13.610	154.020	5072.90	431.31	-376.45	456.05	40°21'49.200"N	104°24'05.121"W	2.09	
5231.00	13.560	141.890	5164.29	451.25	-395.07	467.70	40°21'49.016"N	104°24'04.970"W	3.03	
5324.00	13.660	125.790	5254.71	468.12	-410.08	483.34	40°21'48.868"N	104°24'04.768"W	4.06	
5418.00	13.650	120.440	5346.06	482.49	-422.19	501.91	40°21'48.748"N	104°24'04.529"W	1.34	
5512.00	14.600	115.440	5437.22	495.69	-432.90	522.17	40°21'48.642"N	104°24'04.267"W	1.64	
5607.00	14.690	101.950	5529.16	506.14	-440.54	544.77	40°21'48.567"N	104°24'03.975"W	3.58	



# Actual Wellpath Report

NORTH PLATTE 31-35-2MRLNC AWP

Page 4 of 9



## REFERENCE WELLPATH IDENTIFICATION

Operator	BONANZA CREEK OIL COMPANY	Slot	SLOT#29 NORTH PLATTE 31-35-2MRLNC (559'FSL & 2552'FEL, SEC.26)
Area	COLORADO	Well	NORTH PLATTE 31-35-2MRLNC
Field	WELD COUNTY	Wellbore	NORTH PLATTE 31-35-2MRLNC AWP
Facility	SEC.26-T5N-R63W		

## WELLPATH DATA (125 stations) † = interpolated/extrapolated station

MD [ft]	Inclination [°]	Azimuth [°]	TVD [ft]	Vert Sect [ft]	North [ft]	East [ft]	Latitude	Longitude	DLS [°/100ft]	Comments
5701.00	14.570	91.150	5620.13	511.80	-443.24	568.26	40°21'48.540"N	104°24'03.671"W	2.90	
5795.00	14.630	96.260	5711.10	516.32	-444.77	591.88	40°21'48.525"N	104°24'03.366"W	1.37	
5889.00	14.550	106.800	5802.08	523.92	-449.48	614.99	40°21'48.478"N	104°24'03.068"W	2.82	
5983.00	12.530	123.280	5893.50	535.38	-458.50	634.83	40°21'48.389"N	104°24'02.811"W	4.61	
6077.00	17.680	154.340	5984.36	555.61	-477.00	649.57	40°21'48.206"N	104°24'02.621"W	10.02	
6171.00	27.810	158.490	6070.95	590.50	-510.35	663.83	40°21'47.877"N	104°24'02.437"W	10.90	
6265.00	37.120	161.590	6150.17	639.70	-557.77	680.86	40°21'47.408"N	104°24'02.217"W	10.06	
6305.00	41.490	165.230	6181.12	664.70	-582.05	688.06	40°21'47.168"N	104°24'02.124"W	12.35	
6359.00	46.620	171.310	6219.93	702.09	-618.79	695.59	40°21'46.805"N	104°24'02.027"W	12.30	
6453.00	56.930	178.690	6278.07	775.67	-692.19	701.67	40°21'46.080"N	104°24'01.948"W	12.57	
6544.00	64.460	183.090	6322.59	854.12	-771.45	700.33	40°21'45.297"N	104°24'01.965"W	9.28	
6637.00	72.370	183.720	6356.78	939.02	-857.71	695.18	40°21'44.444"N	104°24'02.032"W	8.53	
6731.00	81.360	182.000	6378.12	1029.04	-949.04	690.65	40°21'43.542"N	104°24'02.091"W	9.73	
6805.00†	88.648	178.719	6384.56	1102.04	-1022.69	690.20	40°21'42.814"N	104°24'02.096"W	10.79	TOP OF PRODUCTION (463'FNL & 1847'FEL, SEC.35, NWNE, 40.361896, -104.400581)
6825.00	90.620	177.840	6384.69	1121.95	-1042.68	690.80	40°21'42.616"N	104°24'02.089"W	10.79	
6919.00	90.490	173.760	6383.78	1215.79	-1136.41	697.68	40°21'41.690"N	104°24'02.000"W	4.34	
7013.00	90.250	173.490	6383.17	1309.77	-1229.82	708.12	40°21'40.767"N	104°24'01.865"W	0.38	
7107.00	90.490	174.370	6382.56	1403.75	-1323.29	718.06	40°21'39.844"N	104°24'01.737"W	0.97	
7201.00	89.780	175.060	6382.34	1497.69	-1416.89	726.71	40°21'38.919"N	104°24'01.625"W	1.05	
7295.00	90.030	175.800	6382.50	1591.58	-1510.59	734.20	40°21'37.993"N	104°24'01.528"W	0.83	
7389.00	89.880	177.020	6382.57	1685.38	-1604.41	740.09	40°21'37.066"N	104°24'01.452"W	1.31	
7483.00	89.940	178.520	6382.72	1779.01	-1698.33	743.75	40°21'36.137"N	104°24'01.405"W	1.60	
7577.00	89.820	183.770	6382.92	1871.96	-1792.28	741.87	40°21'35.209"N	104°24'01.429"W	5.59	
7671.00	90.770	186.020	6382.43	1963.84	-1885.93	733.85	40°21'34.284"N	104°24'01.533"W	2.60	
7764.00	90.980	184.520	6381.01	2054.60	-1978.52	725.31	40°21'33.369"N	104°24'01.643"W	1.63	
7858.00	90.770	181.310	6379.58	2147.08	-2072.38	720.53	40°21'32.441"N	104°24'01.705"W	3.42	
7952.00	90.800	178.230	6378.29	2240.35	-2166.36	720.91	40°21'31.513"N	104°24'01.700"W	3.28	
8046.00	90.770	176.750	6377.00	2334.01	-2260.26	725.02	40°21'30.585"N	104°24'01.647"W	1.57	
8139.00	91.230	176.410	6375.38	2426.79	-2353.08	730.57	40°21'29.667"N	104°24'01.575"W	0.62	
8233.00	89.690	175.710	6374.62	2520.62	-2446.85	737.03	40°21'28.741"N	104°24'01.492"W	1.80	



# Actual Wellpath Report

NORTH PLATTE 31-35-2MRLNC AWP

Page 5 of 9



## REFERENCE WELLPATH IDENTIFICATION

Operator	BONANZA CREEK OIL COMPANY	Slot	SLOT#29 NORTH PLATTE 31-35-2MRLNC (559'FSL & 2552'FEL, SEC.26)
Area	COLORADO	Well	NORTH PLATTE 31-35-2MRLNC
Field	WELD COUNTY	Wellbore	NORTH PLATTE 31-35-2MRLNC AWP
Facility	SEC.26-T5N-R63W		

## WELLPATH DATA (125 stations)

MD [ft]	Inclination [°]	Azimuth [°]	TVD [ft]	Vert Sect [ft]	North [ft]	East [ft]	Latitude	Longitude	DLS [°/100ft]	Comments
8420.00	90.030	173.180	6375.08	2707.52	-2632.95	755.13	40°21'26.902"N	104°24'01.258"W	1.37	
8514.00	90.030	177.700	6375.03	2801.38	-2726.63	762.60	40°21'25.976"N	104°24'01.162"W	4.81	
8608.00	90.120	179.580	6374.91	2894.88	-2820.60	764.83	40°21'25.048"N	104°24'01.133"W	2.00	
8701.00	90.000	177.680	6374.81	2987.38	-2913.57	767.05	40°21'24.129"N	104°24'01.104"W	2.05	
8795.00	89.970	178.310	6374.84	3080.98	-3007.51	770.34	40°21'23.201"N	104°24'01.062"W	0.67	
8889.00	89.880	179.940	6374.96	3174.38	-3101.50	771.78	40°21'22.272"N	104°24'01.043"W	1.74	
8983.00	89.820	184.300	6375.20	3267.09	-3195.41	768.30	40°21'21.344"N	104°24'01.088"W	4.64	
9077.00	90.280	187.840	6375.12	3358.53	-3288.87	758.36	40°21'20.420"N	104°24'01.217"W	3.80	
9171.00	90.430	188.020	6374.54	3449.23	-3381.97	745.40	40°21'19.500"N	104°24'01.384"W	0.25	
9265.00	90.340	184.270	6373.91	3540.64	-3475.41	735.34	40°21'18.577"N	104°24'01.514"W	3.99	
9359.00	90.370	176.470	6373.32	3633.73	-3569.33	734.73	40°21'17.649"N	104°24'01.522"W	8.30	
9453.00	89.850	180.590	6373.14	3727.22	-3663.28	737.14	40°21'16.720"N	104°24'01.491"W	4.42	
9547.00	90.370	184.700	6372.96	3819.79	-3757.16	732.80	40°21'15.793"N	104°24'01.547"W	4.41	
9640.00	89.940	184.780	6372.71	3910.75	-3849.84	725.12	40°21'14.877"N	104°24'01.646"W	0.47	
9734.00	90.090	181.850	6372.69	4003.13	-3943.67	719.68	40°21'13.950"N	104°24'01.717"W	3.12	
9828.00	89.780	180.390	6372.79	4096.12	-4037.65	717.85	40°21'13.021"N	104°24'01.740"W	1.59	
9922.00	89.660	175.750	6373.25	4189.68	-4131.57	721.01	40°21'12.093"N	104°24'01.699"W	4.94	
10016.00	89.630	176.350	6373.84	4283.52	-4225.35	727.49	40°21'11.166"N	104°24'01.616"W	0.64	
10110.00	89.570	177.120	6374.49	4377.28	-4319.19	732.84	40°21'10.239"N	104°24'01.547"W	0.82	
10203.00	89.750	179.130	6375.04	4469.86	-4412.13	735.88	40°21'09.320"N	104°24'01.508"W	2.17	
10297.00	90.090	181.070	6375.18	4563.07	-4506.13	735.72	40°21'08.392"N	104°24'01.510"W	2.10	
10391.00	90.180	181.140	6374.95	4656.06	-4600.11	733.90	40°21'07.463"N	104°24'01.533"W	0.12	
10579.00	90.090	179.500	6374.51	4842.40	-4788.10	732.85	40°21'05.605"N	104°24'01.547"W	0.87	
10673.00	90.120	182.830	6374.34	4935.36	-4882.07	730.94	40°21'04.677"N	104°24'01.571"W	3.54	
10766.00	90.090	184.780	6374.17	5026.62	-4974.86	724.77	40°21'03.760"N	104°24'01.651"W	2.10	
10860.00	90.030	183.760	6374.07	5118.71	-5068.60	717.77	40°21'02.833"N	104°24'01.742"W	1.09	
10954.00	89.910	182.050	6374.12	5211.22	-5162.47	713.01	40°21'01.906"N	104°24'01.803"W	1.82	
11048.00	89.850	179.620	6374.32	5304.27	-5256.46	711.64	40°21'00.977"N	104°24'01.821"W	2.59	
11142.00	89.880	177.750	6374.54	5397.75	-5350.43	713.80	40°21'00.049"N	104°24'01.793"W	1.99	
11235.00	90.180	176.130	6374.49	5490.50	-5443.29	718.76	40°20'59.131"N	104°24'01.729"W	1.77	



# Actual Wellpath Report

NORTH PLATTE 31-35-2MRLNC AWP

Page 6 of 9



REFERENCE WELLPATH IDENTIFICATION			
Operator	BONANZA CREEK OIL COMPANY	Slot	SLOT#29 NORTH PLATTE 31-35-2MRLNC (559'FSL & 2552'FEL, SEC.26)
Area	COLORADO	Well	NORTH PLATTE 31-35-2MRLNC
Field	WELD COUNTY	Wellbore	NORTH PLATTE 31-35-2MRLNC AWB
Facility	SEC.26-T5N-R63W		

WELLPATH DATA (125 stations)										
MD [ft]	Inclination [°]	Azimuth [°]	TVD [ft]	Vert Sect [ft]	North [ft]	East [ft]	Latitude	Longitude	DLS °/100ft	Comments
11329.00	90.120	174.810	6374.24	5584.38	-5536.99	726.19	40°20'58.205"N	104°24'01.633"W	1.41	
11423.00	89.850	172.110	6374.27	5678.37	-5630.37	736.89	40°20'57.282"N	104°24'01.495"W	2.89	
11517.00	90.030	172.200	6374.37	5772.36	-5723.49	749.72	40°20'56.362"N	104°24'01.329"W	0.21	
11574.00	89.910	172.650	6374.40	5829.36	-5780.00	757.24	40°20'55.804"N	104°24'01.232"W	0.82	LAST BHI MWD SURVEY
11599.00	89.910	172.650	6374.44	5854.36	-5804.79	760.43	40°20'55.559"N	104°24'01.191"W	0.00	5.5" CASING/ PROJECTION TO BIT (47'FNL & 1209'FEL, SEC.02, NENE, 40.348770, -104.400329)

HOLE & CASING SECTIONS - Ref Wellbore: NORTH PLATTE 31-35-2MRLNC AWB										Ref Wellpath: NORTH PLATTE 31-35-2MRLNC AWP
String/Diameter	Start MD [ft]	End MD [ft]	Interval [ft]	Start TVD [ft]	End TVD [ft]	Start N/S [ft]	Start E/W [ft]	End N/S [ft]	End E/W [ft]	
9.625in Casing Surface	17.00	1537.00	1520.00	17.00	1536.89	0.00	0.00	-1.48	1.57	
8.5in Open Hole	1537.00	11636.00	10099.00	1536.89	N/A	-1.48	1.57	N/A	N/A	



# Actual Wellpath Report

NORTH PLATTE 31-35-2MRLNC AWP  
Page 7 of 9



REFERENCE WELLPATH IDENTIFICATION			
Operator	BONANZA CREEK OIL COMPANY	Slot	SLOT#29 NORTH PLATTE 31-35-2MRLNC (559'FSL & 2552'FEL, SEC.26)
Area	COLORADO	Well	NORTH PLATTE 31-35-2MRLNC
Field	WELD COUNTY	Wellbore	NORTH PLATTE 31-35-2MRLNC AWB
Facility	SEC.26-T5N-R63W		

TARGETS								
Name	TVD [ft]	North [ft]	East [ft]	Grid East [US ft]	Grid North [US ft]	Latitude	Longitude	Shape
SEC.26-T05N-R63W	-19.00	4163.53	-1533.84	3304075.56	1381735.41	40°22'34.062"N	104°24'30.831"W	polygon
SEC.02-T4N-R63W	-5.00	892.58	-1123.83	3304525.98	1378469.93	40°22'01.740"N	104°24'25.531"W	polygon
SEC.35-T5N-R63W	-5.00	892.58	-1123.83	3304525.98	1378469.93	40°22'01.740"N	104°24'25.531"W	polygon
NORTH PLATTE 31-35-2MRLNC BHL REV-2 (50'FNL & 1226'FEL, SEC.02)	6350.00	-5806.67	743.47	3306475.92	1371794.57	40°20'55.540"N	104°24'01.410"W	point
NORTH PLATTE 31-35-2MRLNC LP REV-2 (470'FNL & 1813'FEL, SEC.35)	6350.00	-1028.15	724.75	3306398.09	1376572.29	40°21'42.760"N	104°24'01.650"W	point
NORTH PLATTE 31-35-2MRLNC BHL REV-3 (50'FNL & 1226'FEL, SEC.02)	6382.00	-5806.67	743.47	3306475.92	1371794.57	40°20'55.540"N	104°24'01.410"W	point
NORTH PLATTE 31-35-2MRLNC LP REV-3 (470'FNL & 1813'FEL, SEC.35)	6382.00	-1028.15	724.75	3306398.09	1376572.29	40°21'42.760"N	104°24'01.650"W	point
SEC.02-T4N-R63W 460'SETBACK	6539.00	892.58	-1123.82	3304525.98	1378469.93	40°22'01.740"N	104°24'25.531"W	polygon
SEC.26-T05N-R63W 460' SETBACK	6539.00	4163.53	-1533.84	3304075.56	1381735.41	40°22'34.062"N	104°24'30.831"W	polygon
SEC.35-T5N-R63W 460'SETBACK	6539.00	892.58	-1123.82	3304525.98	1378469.93	40°22'01.740"N	104°24'25.531"W	polygon



Actual Wellpath Report  
NORTH PLATTE 31-35-2MRLNC AWP  
Page 8 of 9



REFERENCE WELLPATH IDENTIFICATION			
Operator	BONANZA CREEK OIL COMPANY	Slot	SLOT#29 NORTH PLATTE 31-35-2MRLNC (559'FSL & 2552'FEL, SEC.26)
Area	COLORADO	Well	NORTH PLATTE 31-35-2MRLNC
Field	WELD COUNTY	Wellbore	NORTH PLATTE 31-35-2MRLNC AWB
Facility	SEC.26-T5N-R63W		

WELLPATH COMPOSITION - Ref Wellbore: NORTH PLATTE 31-35-2MRLNC AWB					Ref Wellpath: NORTH PLATTE 31-35-2MRLNC AWP	
Start MD [ft]	End MD [ft]	Positional Uncertainty Model		Log Name/Comment	Wellbore	
17.00	1495.00	Custom BHI NaviTrak (Standard Rotating+Axial Corr) (Rockies 0.03Gt model)		BHI MWD NAVITRAK+AC+SR+ROCKIES <135-1495>	NORTH PLATTE 31-35-2MRLNC AWB	
1495.00	11574.00	BHI AutoTrak Curve (Axial Corr, Short spacing)		BHI ATCURVE+AC+SS <1616-11574>	NORTH PLATTE 31-35-2MRLNC AWB	
11574.00	11599.00	Blind Drilling (std)		Projection to bit	NORTH PLATTE 31-35-2MRLNC AWB	



# Actual Wellpath Report

NORTH PLATTE 31-35-2MRLNC AWP

Page 9 of 9



## REFERENCE WELLPATH IDENTIFICATION

Operator	BONANZA CREEK OIL COMPANY	Slot	SLOT#29 NORTH PLATTE 31-35-2MRLNC (559'FSL & 2552'FEL, SEC.26)
Area	COLORADO	Well	NORTH PLATTE 31-35-2MRLNC
Field	WELD COUNTY	Wellbore	NORTH PLATTE 31-35-2MRLNC AWB
Facility	SEC.26-T5N-R63W		

## WELLPATH COMMENTS

MD [ft]	Inclination [°]	Azimuth [°]	TVD [ft]	Comment
135.00	0.630	111.700	135.00	FIRST BHI MWD SURVEY
6805.00	88.648	178.719	6384.56	TOP OF PRODUCTION (463'FNL & 1847'FEL, SEC.35, NWNE, 40.361896, -104.400581)
11574.00	89.910	172.650	6374.40	LAST BHI MWD SURVEY
11599.00	89.910	172.650	6374.44	5.5" CASING/ PROJECTION TO BIT (47'FNL & 1209'FEL, SEC.02, NENE, 40.348770, -104.400329)

## COMMENTS

### Wellpath general comments

TOP OF PRODUCTION (463'FNL & 1847'FEL, SEC.35, NWNE, 40.361896, -104.400581)  
5.5" CASING/ PROJECTION TO BIT (47'FNL & 1209'FEL, SEC.02, NENE, 40.348770, -104.400329)