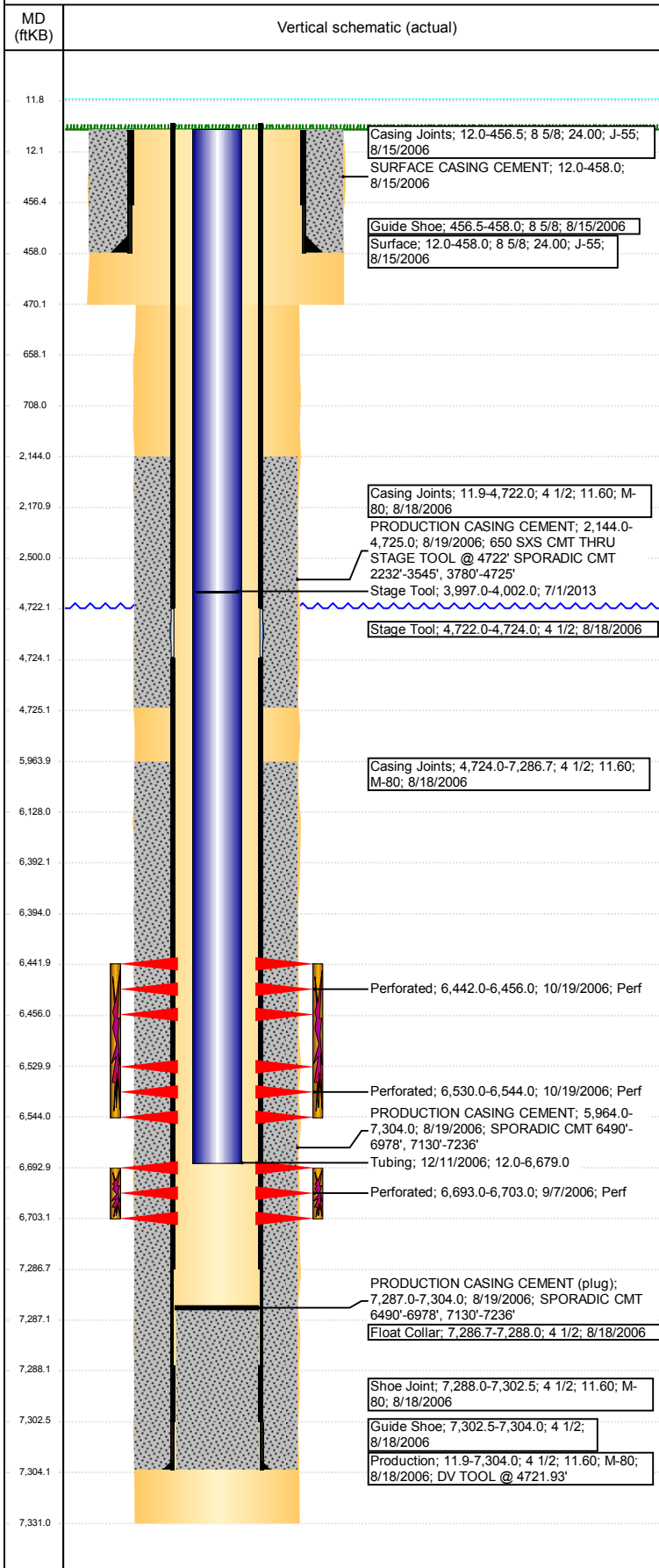


**Well Name: 70 RANCH 44-09**

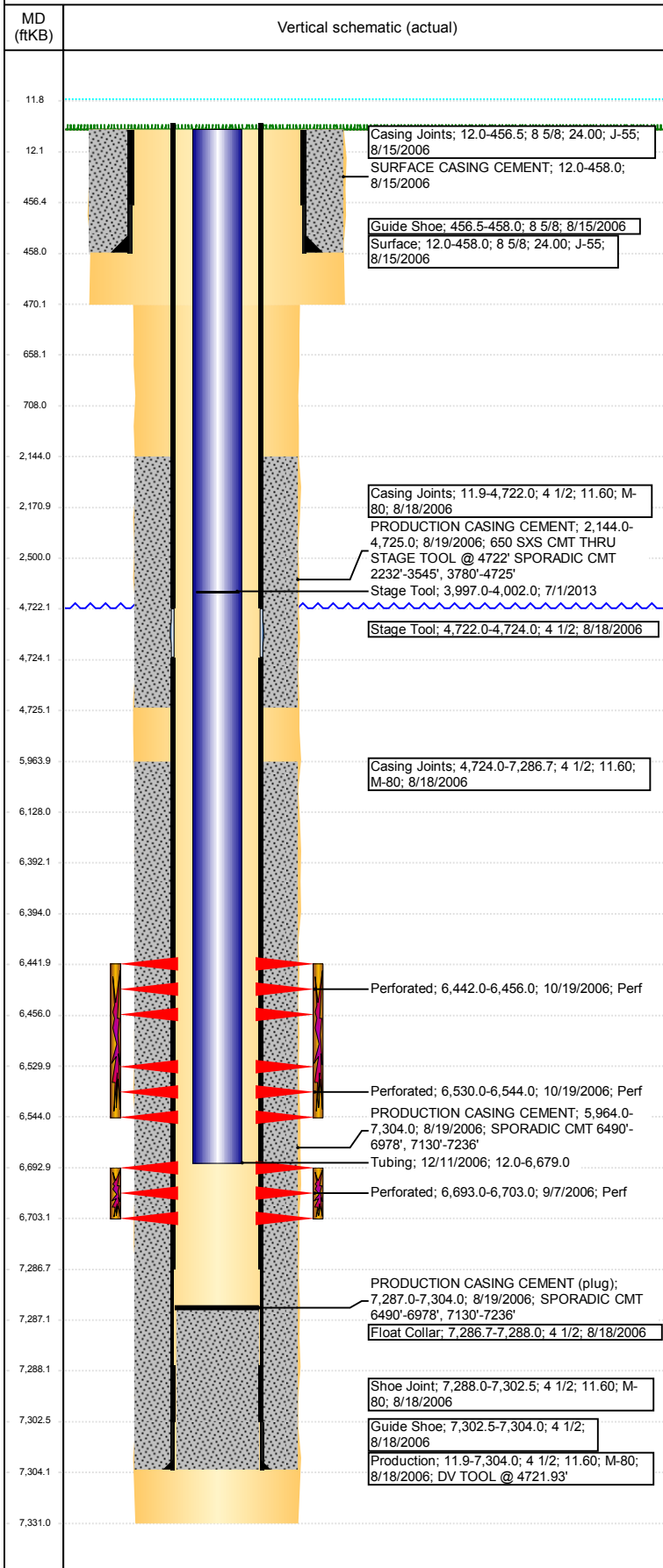
VERTICAL - ORIGINAL HOLE, 6/13/2018 3:59:11 PM



Well Header							
API 05-123-23999		Well Report Center 424403782		Well Configuration Type VERTICAL			
Original KB Elevation (ft) 4,713		KB - GL / MSL (ftKB) 12.00		Spud Date 8/14/2006		P & A Date	
Production Route B2-03			Well Production Status PR				SoRT Ignore No
Directions To Well				Actual Latitude (°) 40.40863151		Actual Longitude (°) -104.43483949	
Comment DV TOOL @ 4721.93' DRILLER'S TD = 7320', LOGGER'S TD = 7331							
Congressional Location							
Quarter 3 SE	Quarter 4 SE	Section 9	Township 5	Twnshp N/S Dir N	Range 63	Range E/W Dir W	
Rig Operator							
Rig Operator							
Plug Back Total Depths							
Date	Depth (ftKB)	Method		Com			
12/8/2006	7,287.0	TAG		C/O TO PBTD@7287'			
Wellbore Sections							
Section Des		Size (in)		Act Top, MD (ftKB)		Act Btm, MD (ftKB)	
SURFACE		12 1/4		12		470	
PRODUCTION		7 7/8		470		7,331	
Zone Statuses							
Zone Name		Status Date			Status		
NIOBRARA		10/22/2006			PR		
CODELL		10/22/2006			PR		
Casing Strings							
Surface, 458.0ftKB							
Casing Description Surface	Run Date 8/15/2006	OD (in) 8 5/8	Wt/Len (l... 24.00	Grade J-55	Top, MD (ft... 12.0	MD (ftKB) 458.0	
Production, 7,304.0ftKB							
Casing Description Production	Run Date 8/18/2006	OD (in) 4 1/2	Wt/Len (l... 11.60	Grade M-80	Top, MD (ft... 12.0	MD (ftKB) 7,304.0	
Cement							
Des		Start Date		Top (ftKB)		Btm (ftKB)	
SURFACE CASING CEMENT		8/15/2006		12.0		458.0	
PRODUCTION CASING CEMENT		8/19/2006		2,144.0		4,725.0	
PRODUCTION CASING CEMENT		8/19/2006		5,964.0		7,304.0	
Proposed Cement							
Des				Top (ftKB)		Btm (ftKB)	
P&A PLUG				6,128.0		6,392.0	
P&A PLUG				12.0		658.0	
P&A PLUG				658.0		708.0	
P&A PLUG				2,171.0		2,500.0	
Tubing Strings							
Tubing Description Tubing	Run Date 12/11/2006	String... 6	ID (in) 2 3/8	Wt (lb/ft) 2.00	Grade 4.70	J-55	Len (ft) 6,667.00
Set De...							
Tubing Components							
Item Des	OD (in)	Wt (lb/ft)	Grade	Jts	Len (ft)	Btm (ftKB)	Btm (TVD) (ftKB)
EUE 8rd Tubing	2 3/8	4.70	J-55	213	6,665.35	6,677.3	
Notched collar	2 3/8				1.65	6,679.0	
Other In Hole							
Run Date	Des			OD (in)	Top (ftKB)	Btm (ftKB)	
Proposed Other In Hole							
Des			OD (in)	Top (ftKB)		Btm (ftKB)	
Cast Iron Bridge Plug			3.99	6,392.0		6,394.0	
Logs							
Date	Type				Top, MD (ftKB)		Btm, MD (ftKB)
8/18/2006	COMPENSATED DENSITY				12.0		7,331.0
8/18/2006	INDUCTION				12.0		7,331.0
9/7/2006	CEMENT BOND				2,019.0		7,274.0
5/17/2011	GYRO				12.0		6,650.0

**Well Name: 70 RANCH 44-09**

VERTICAL - ORIGINAL HOLE, 6/13/2018 3:59:12 PM



Perforation Data				
Linked Zone	Sum of Entered Shot Total	Top (ftKB)	Btm (ftKB)	Date
NIOBRARA, ORIGINAL HOLE	84	6,442.00	6,456.00	10/19/2006
NIOBRARA, ORIGINAL HOLE	84	6,530.00	6,544.00	10/19/2006
CODELL, ORIGINAL HOLE	40	6,693.00	6,703.00	9/7/2006
<b>Total (Sum)</b>	<b>208</b>			
Job Supply Amounts				
Supply Item Des	Type	Uni...	Job Category	Total ... Total ... Total ...