

# LEGEND:

- 90° SYMBOL
- PROPOSED WELLHEAD.
- TARGET BOTTOM HOLE.
- SECTION CORNERS LOCATED. (NAD 83)
- SECTION CORNERS RE-ESTABLISHED. (Not Set on Ground.) (NAD 83)

1913 Brass Cap,  
0.3' Below Ground,  
Stone Collar  
Lat: 39.532428°  
Long: 107.921295°

S 1/4 Cor. Sec. 18,  
Spike, Cement Pillar,  
Carsonite Post  
Lat: 39.517653°  
Long: 107.925984°

Section Corner  
Re-Established  
By Bearing Trees  
Lat: 39.521279°  
Long: 107.921319°

True Position  
Lat: 39.517667°  
Long: 107.921315°

W.C.  
1982 Brass Cap,  
1.0' High, Steel Post,  
Mound of Stones  
Lat: 39.517442°  
Long: 107.921312°

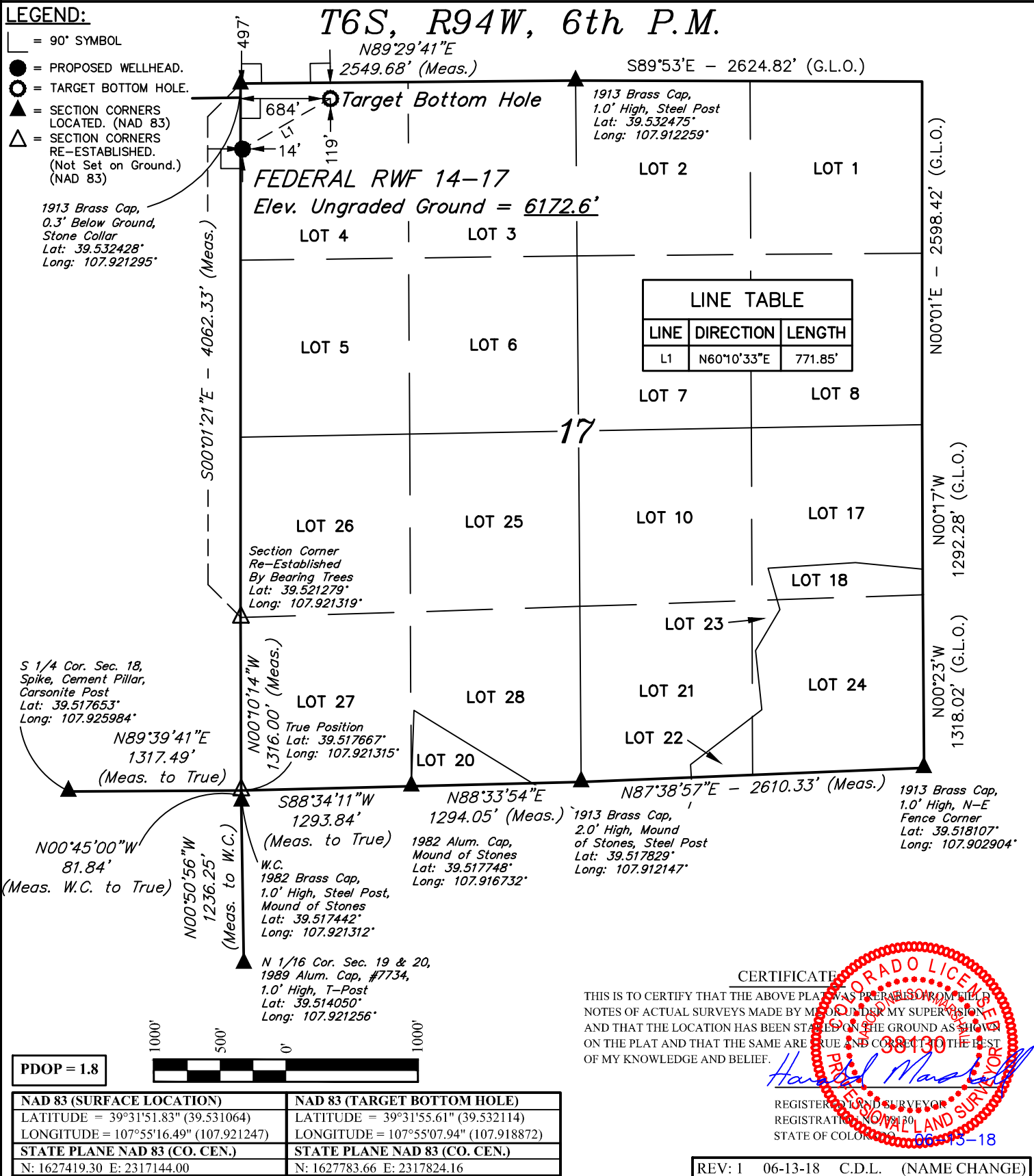
N 1/16 Cor. Sec. 19 & 20,  
1989 Alum. Cap, #7734,  
1.0' High, T-Post  
Lat: 39.514050°  
Long: 107.921256°

1982 Alum. Cap,  
Mound of Stones  
Lat: 39.517748°  
Long: 107.916732°

1913 Brass Cap,  
2.0' High, Mound  
of Stones, Steel Post  
Lat: 39.517829°  
Long: 107.912147°

1913 Brass Cap,  
1.0' High, N-E  
Fence Corner  
Lat: 39.518107°  
Long: 107.902904°

## T6S, R94W, 6th P.M.



**BASIS OF BEARINGS**  
BASIS OF BEARINGS IS A G.P.S. OBSERVATION

**BASIS OF ELEVATION**  
SPOT ELEVATION AT THE NORTHWEST CORNER OF SECTION 30, T5S, R95W, 6th P.M. TAKEN FROM THE FORKED GULCH QUADRANGLE, COLORADO, GARFIELD COUNTY, 7.5 MINUTE SERIES (TOPOGRAPHICAL MAP) PUBLISHED BY THE UNITED STATES DEPARTMENT OF THE INTERIOR, GEOLOGICAL SURVEY. SAID ELEVATION IS MARKED AS BEING 5966 FEET.

**UELS, LLC**  
Corporate Office \* 85 South 200 East  
Vernal, UT 84078 \* (435) 789-1017

**TEP Rocky Mountain LLC**

**FEDERAL RWF 14-17**  
**LOT 4, SECTION 17, T6S, R94W, 6th P.M.**  
**GARFIELD COUNTY, COLORADO**

SURVEYED BY	BART HUNTING, J.L.	05-23-18	SCALE
DRAWN BY	C.D.L.	05-24-18	1" = 1000'

**WELL LOCATION PLAT**