



Well: Silverton 5-03-4L  
Site: Section 04-T04N-R63W  
Project: Weld County, Colorado  
Wellbore: Original Hole  
Design: plan1

#### Section Details

Sec	MD	Inc	Azi	TVD	+N/-S	+E/-W	Dleg	VSec	Annotation
1	0.00	0.00	0.00	0.00	0.00	0.00	0.00	0.00	
2	2000.00	0.00	0.00	2000.00	0.00	0.00	0.00	0.00	KOP Begin 2°/100' build
3	2392.06	7.84	344.40	2390.84	25.80	-7.20	2.00	8.66	Begin 7.84° tangent section
4	6083.56	7.84	344.40	6047.82	510.87	-142.66	0.00	171.55	Begin 10°/100' build/turn
5	6962.57	90.00	269.97	6595.00	583.15	-715.27	10.00	747.36	LP Begin 90° lateral
6	16368.88	90.00	269.97	6595.00	578.04	-10121.58	0.00	10138.07	PBHL/TD 16368.88 MD 6595.00 TVD

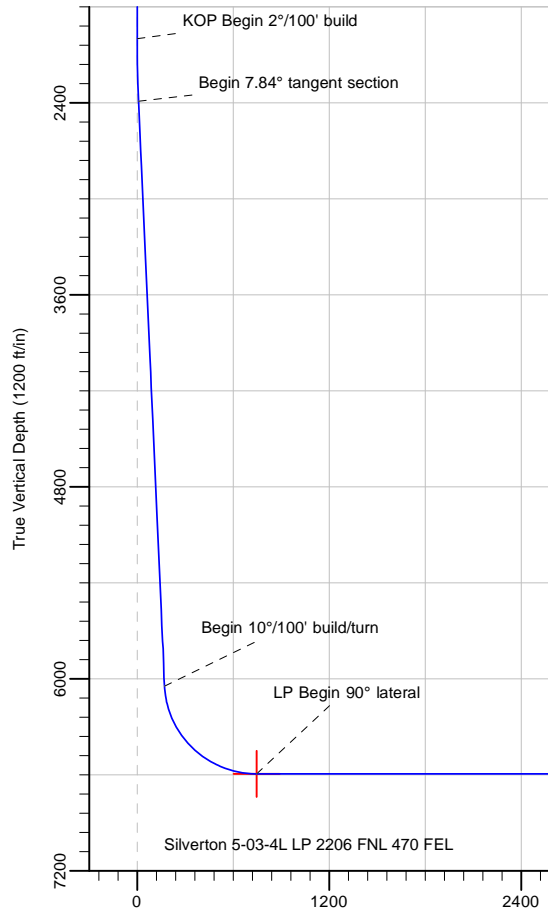
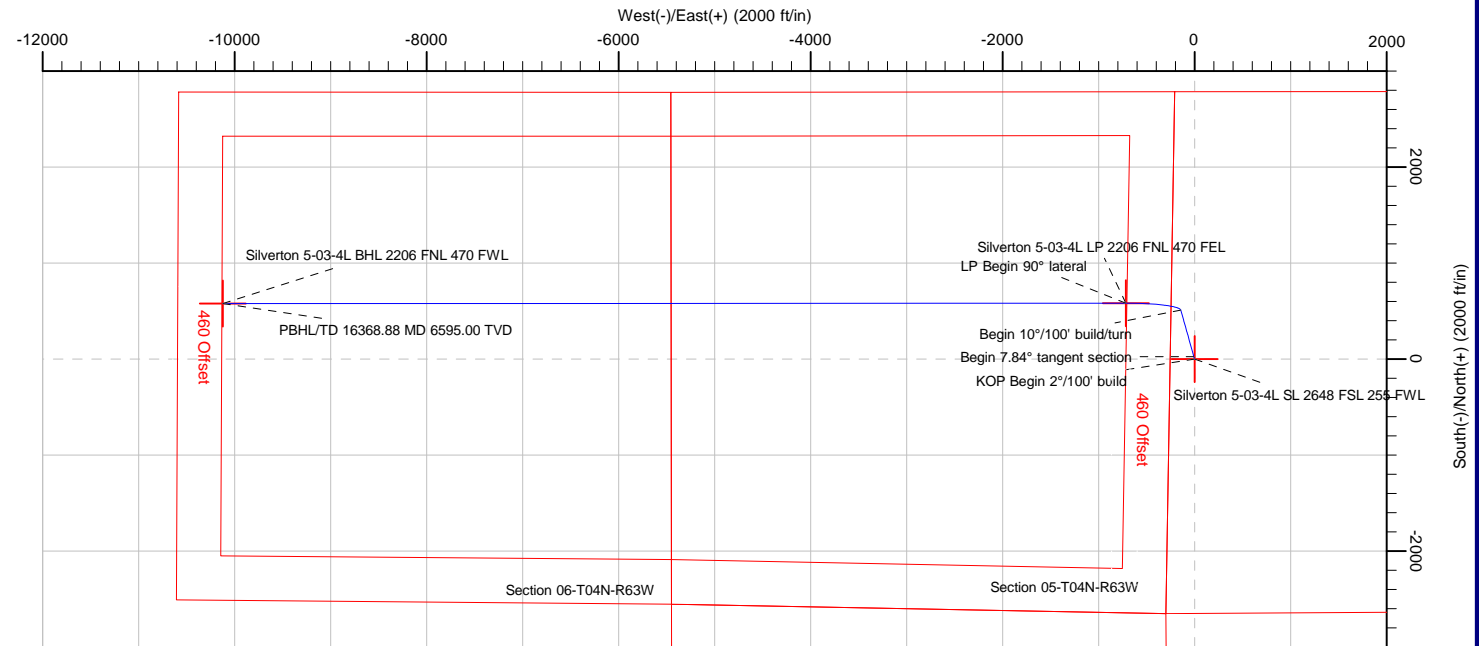
#### DESIGN TARGET DETAILS

Name	TVD	+N/-S	+E/-W	Northing	Easting	Latitude	Longitude
Silverton 5-03-4L SL 2648 FSL 255 FWL	24.00	0.00	0.00	14651401.40	1793251.28	40.34105171	-104.45152433
Silverton 5-03-4L BHL 2206 FNL 470 FWL	6595.00	578.04	-10121.58	14651916.70	1783126.33	40.34263327	-104.48784749
Silverton 5-03-4L LP 2206 FNL 470 FEL	6595.00	583.15	-715.27	14651980.10	1792532.41	40.34265297	-104.45409121

Silverton 5-03-4L			
Surf loc: 2648 FSL 255 FWL Section 04-T04N-R63W			
NAD83 Colorado - HARN			
Universal Transverse Mercator (US Survey Feet)			
Zone 13N (108 W to 102 W)			
RKB=4630+24 @ 4654.00ft			
Northing	Easting	Latitude	Longitude
14651401.40	1793251.28	40.34105171	-104.45152433



Azimuths to True North  
Magnetic North: 8.08°  
  
Magnetic Field  
Strength: 52227.8snT  
Dip Angle: 66.90°  
Date: 5/29/2018  
Model: HDGM



PBHL/TD 16368.88 MD 6595.00 TVD

Silverton 5-03-4L BHL 2206 FNL 470 FWL

Note: All lease lines and hard lines are estimates only and are subject to customers approval.

<b>Database:</b>	DB_Aug0116_LT_v14	<b>Local Co-ordinate Reference:</b>	Well Silverton 5-03-4L
<b>Company:</b>	Confluence Resources	<b>TVD Reference:</b>	RKB=4630+24 @ 4654.00ft
<b>Project:</b>	Weld County, Colorado	<b>MD Reference:</b>	RKB=4630+24 @ 4654.00ft
<b>Site:</b>	Section 04-T04N-R63W	<b>North Reference:</b>	True
<b>Well:</b>	Silverton 5-03-4L	<b>Survey Calculation Method:</b>	Minimum Curvature
<b>Wellbore:</b>	Original Hole		
<b>Design:</b>	plan1		

<b>Project</b>	Weld County, Colorado		
<b>Map System:</b>	Universal Transverse Mercator (US Survey Feet)	<b>System Datum:</b>	Mean Sea Level
<b>Geo Datum:</b>	NAD83 Colorado - HARN		
<b>Map Zone:</b>	Zone 13N (108 W to 102 W)		

Site		Section 04-T04N-R63W			
Site Position:		Northing:	14,650,073.90 usft	Latitude:	40.33740565
From:	Map	Easting:	1,793,302.13 usft	Longitude:	-104.45137138
Position Uncertainty:	0.00 ft	Slot Radius:	13-3/16 "	Grid Convergence:	0.36 °

Well	Silverton 5-03-4L, Surf loc: 2648 FSL 255 FWL Section 04-T04N-R63W					
Well Position	+N/-S	0.00 ft	Northing:	14,651,401.40 usft	Latitude:	40.34105171
	+E/-W	0.00 ft	Easting:	1,793,251.28 usft	Longitude:	-104.45152433
Position Uncertainty		0.00 ft	Wellhead Elevation:		Ground Level:	4,630.00 ft

<b>Wellbore</b>	Original Hole				
<b>Magnetics</b>	<b>Model Name</b>	<b>Sample Date</b>	<b>Declination (°)</b>	<b>Dip Angle (°)</b>	<b>Field Strength (nT)</b>
	HDGM	5/29/2018	8.08	66.90	52,227.80000000

<b>Design</b>	plan1			
<b>Audit Notes:</b>				
<b>Version:</b>	<b>Phase:</b>	PLAN	<b>Tie On Depth:</b>	0.00
<b>Vertical Section:</b>	<b>Depth From (TVD) (ft)</b>	<b>+N/-S (ft)</b>	<b>+E/-W (ft)</b>	<b>Direction (°)</b>
	0.00	0.00	0.00	273.27

<b>Plan Survey Tool Program</b>	<b>Date</b>	5/29/2018		
<b>Depth From (ft)</b>	<b>Depth To (ft)</b>	<b>Survey (Wellbore)</b>	<b>Tool Name</b>	<b>Remarks</b>
1	0.00	16,368.88 plan1 (Original Hole)		

<b>Plan Sections</b>										
<b>Measured Depth (ft)</b>	<b>Inclination (°)</b>	<b>Azimuth (°)</b>	<b>Vertical Depth (ft)</b>	<b>+N/-S (ft)</b>	<b>+E/-W (ft)</b>	<b>Dogleg Rate (°/100ft)</b>	<b>Build Rate (°/100ft)</b>	<b>Turn Rate (°/100ft)</b>	<b>TFO (°)</b>	<b>Target</b>
0.00	0.00	0.00	0.00	0.00	0.00	0.00	0.00	0.00	0.00	
2,000.00	0.00	0.00	2,000.00	0.00	0.00	0.00	0.00	0.00	0.00	
2,392.06	7.84	344.40	2,390.84	25.80	-7.20	2.00	2.00	0.00	344.40	
6,083.56	7.84	344.40	6,047.82	510.87	-142.66	0.00	0.00	0.00	0.00	
6,962.57	90.00	269.97	6,595.00	583.15	-715.27	10.00	9.35	-8.47	-74.57	Silverton 5-03-4L LP 2
16,368.88	90.00	269.97	6,595.00	578.04	-10,121.58	0.00	0.00	0.00	0.00	Silverton 5-03-4L BHL

<b>Database:</b>	DB_Aug0116_LT_v14	<b>Local Co-ordinate Reference:</b>	Well Silverton 5-03-4L
<b>Company:</b>	Confluence Resources	<b>TVD Reference:</b>	RKB=4630+24 @ 4654.00ft
<b>Project:</b>	Weld County, Colorado	<b>MD Reference:</b>	RKB=4630+24 @ 4654.00ft
<b>Site:</b>	Section 04-T04N-R63W	<b>North Reference:</b>	True
<b>Well:</b>	Silverton 5-03-4L	<b>Survey Calculation Method:</b>	Minimum Curvature
<b>Wellbore:</b>	Original Hole		
<b>Design:</b>	plan1		

Planned Survey									
Measured Depth (ft)	Inclination (°)	Azimuth (°)	Vertical Depth (ft)	+N/-S (ft)	+E/-W (ft)	Map Northing (usft)	Map Easting (usft)	Latitude	Longitude
0.00	0.00	0.00	0.00	0.00	0.00	14,651,401.40	1,793,251.28	40.34105171	-104.45152433
100.00	0.00	0.00	100.00	0.00	0.00	14,651,401.40	1,793,251.28	40.34105171	-104.45152433
200.00	0.00	0.00	200.00	0.00	0.00	14,651,401.40	1,793,251.28	40.34105171	-104.45152433
300.00	0.00	0.00	300.00	0.00	0.00	14,651,401.40	1,793,251.28	40.34105171	-104.45152433
400.00	0.00	0.00	400.00	0.00	0.00	14,651,401.40	1,793,251.28	40.34105171	-104.45152433
500.00	0.00	0.00	500.00	0.00	0.00	14,651,401.40	1,793,251.28	40.34105171	-104.45152433
600.00	0.00	0.00	600.00	0.00	0.00	14,651,401.40	1,793,251.28	40.34105171	-104.45152433
700.00	0.00	0.00	700.00	0.00	0.00	14,651,401.40	1,793,251.28	40.34105171	-104.45152433
800.00	0.00	0.00	800.00	0.00	0.00	14,651,401.40	1,793,251.28	40.34105171	-104.45152433
900.00	0.00	0.00	900.00	0.00	0.00	14,651,401.40	1,793,251.28	40.34105171	-104.45152433
1,000.00	0.00	0.00	1,000.00	0.00	0.00	14,651,401.40	1,793,251.28	40.34105171	-104.45152433
1,100.00	0.00	0.00	1,100.00	0.00	0.00	14,651,401.40	1,793,251.28	40.34105171	-104.45152433
1,200.00	0.00	0.00	1,200.00	0.00	0.00	14,651,401.40	1,793,251.28	40.34105171	-104.45152433
1,300.00	0.00	0.00	1,300.00	0.00	0.00	14,651,401.40	1,793,251.28	40.34105171	-104.45152433
1,400.00	0.00	0.00	1,400.00	0.00	0.00	14,651,401.40	1,793,251.28	40.34105171	-104.45152433
1,500.00	0.00	0.00	1,500.00	0.00	0.00	14,651,401.40	1,793,251.28	40.34105171	-104.45152433
1,600.00	0.00	0.00	1,600.00	0.00	0.00	14,651,401.40	1,793,251.28	40.34105171	-104.45152433
1,700.00	0.00	0.00	1,700.00	0.00	0.00	14,651,401.40	1,793,251.28	40.34105171	-104.45152433
1,800.00	0.00	0.00	1,800.00	0.00	0.00	14,651,401.40	1,793,251.28	40.34105171	-104.45152433
1,900.00	0.00	0.00	1,900.00	0.00	0.00	14,651,401.40	1,793,251.28	40.34105171	-104.45152433
2,000.00	0.00	0.00	2,000.00	0.00	0.00	14,651,401.40	1,793,251.28	40.34105171	-104.45152433
<b>KOP Begin 2°/100' build</b>									
2,100.00	2.00	344.40	2,099.98	1.68	-0.47	14,651,403.08	1,793,250.80	40.34105632	-104.45152602
2,200.00	4.00	344.40	2,199.84	6.72	-1.88	14,651,408.11	1,793,249.36	40.34107016	-104.45153107
2,300.00	6.00	344.40	2,299.45	15.12	-4.22	14,651,416.49	1,793,246.97	40.34109321	-104.45153948
2,392.06	7.84	344.40	2,390.84	25.80	-7.20	14,651,427.15	1,793,243.92	40.34112255	-104.45155019
<b>Begin 7.84° tangent section</b>									
2,400.00	7.84	344.40	2,398.70	26.84	-7.50	14,651,428.19	1,793,243.62	40.34112541	-104.45155123
2,500.00	7.84	344.40	2,497.77	39.98	-11.16	14,651,441.31	1,793,239.87	40.34116150	-104.45156440
2,600.00	7.84	344.40	2,596.83	53.12	-14.83	14,651,454.43	1,793,236.12	40.34119758	-104.45157757
2,700.00	7.84	344.40	2,695.90	66.26	-18.50	14,651,467.54	1,793,232.37	40.34123366	-104.45159074
2,800.00	7.84	344.40	2,794.96	79.40	-22.17	14,651,480.66	1,793,228.62	40.34126974	-104.45160390
2,900.00	7.84	344.40	2,894.03	92.54	-25.84	14,651,493.78	1,793,224.86	40.34130582	-104.45161707
3,000.00	7.84	344.40	2,993.09	105.68	-29.51	14,651,506.90	1,793,221.11	40.34134191	-104.45163024
3,100.00	7.84	344.40	3,092.16	118.82	-33.18	14,651,520.01	1,793,217.36	40.34137799	-104.45164341
3,200.00	7.84	344.40	3,191.22	131.96	-36.85	14,651,533.13	1,793,213.61	40.34141407	-104.45165658
3,300.00	7.84	344.40	3,290.29	145.10	-40.52	14,651,546.25	1,793,209.86	40.34145015	-104.45166974
3,400.00	7.84	344.40	3,389.35	158.24	-44.19	14,651,559.36	1,793,206.11	40.34148624	-104.45168291
3,500.00	7.84	344.40	3,488.42	171.38	-47.86	14,651,572.48	1,793,202.36	40.34152232	-104.45169608
3,600.00	7.84	344.40	3,587.48	184.52	-51.53	14,651,585.60	1,793,198.61	40.34155840	-104.45170925
3,700.00	7.84	344.40	3,686.55	197.66	-55.20	14,651,598.71	1,793,194.86	40.34159448	-104.45172242
3,800.00	7.84	344.40	3,785.61	210.80	-58.87	14,651,611.83	1,793,191.11	40.34163056	-104.45173558
3,900.00	7.84	344.40	3,884.68	223.94	-62.54	14,651,624.95	1,793,187.36	40.34166665	-104.45174875
4,000.00	7.84	344.40	3,983.74	237.08	-66.21	14,651,638.07	1,793,183.61	40.34170273	-104.45176192
4,100.00	7.84	344.40	4,082.81	250.22	-69.87	14,651,651.18	1,793,179.86	40.34173881	-104.45177509
4,200.00	7.84	344.40	4,181.87	263.36	-73.54	14,651,664.30	1,793,176.11	40.34177489	-104.45178826
4,300.00	7.84	344.40	4,280.94	276.50	-77.21	14,651,677.42	1,793,172.35	40.34181097	-104.45180142
4,400.00	7.84	344.40	4,380.00	289.64	-80.88	14,651,690.53	1,793,168.60	40.34184706	-104.45181459
4,500.00	7.84	344.40	4,479.07	302.78	-84.55	14,651,703.65	1,793,164.85	40.34188314	-104.45182776
4,600.00	7.84	344.40	4,578.13	315.92	-88.22	14,651,716.77	1,793,161.10	40.34191922	-104.45184093
4,700.00	7.84	344.40	4,677.20	329.06	-91.89	14,651,729.89	1,793,157.35	40.34195530	-104.45185410
4,800.00	7.84	344.40	4,776.26	342.21	-95.56	14,651,743.00	1,793,153.60	40.34199138	-104.45186727
4,900.00	7.84	344.40	4,875.33	355.35	-99.23	14,651,756.12	1,793,149.85	40.34202747	-104.45188043
5,000.00	7.84	344.40	4,974.39	368.49	-102.90	14,651,769.24	1,793,146.10	40.34206355	-104.45189360



<b>Database:</b>	DB_Aug0116_LT_v14	<b>Local Co-ordinate Reference:</b>	Well Silverton 5-03-4L
<b>Company:</b>	Confluence Resources	<b>TVD Reference:</b>	RKB=4630+24 @ 4654.00ft
<b>Project:</b>	Weld County, Colorado	<b>MD Reference:</b>	RKB=4630+24 @ 4654.00ft
<b>Site:</b>	Section 04-T04N-R63W	<b>North Reference:</b>	True
<b>Well:</b>	Silverton 5-03-4L	<b>Survey Calculation Method:</b>	Minimum Curvature
<b>Wellbore:</b>	Original Hole		
<b>Design:</b>	plan1		

Planned Survey									
Measured Depth (ft)	Inclination (°)	Azimuth (°)	Vertical Depth (ft)	+N/-S (ft)	+E/-W (ft)	Map Northing (usft)	Map Easting (usft)	Latitude	Longitude
5,100.00	7.84	344.40	5,073.46	381.63	-106.57	14,651,782.35	1,793,142.35	40.34209963	-104.45190677
5,200.00	7.84	344.40	5,172.52	394.77	-110.24	14,651,795.47	1,793,138.60	40.34213571	-104.45191994
5,300.00	7.84	344.40	5,271.59	407.91	-113.91	14,651,808.59	1,793,134.85	40.34217180	-104.45193311
5,400.00	7.84	344.40	5,370.65	421.05	-117.58	14,651,821.71	1,793,131.10	40.34220788	-104.45194628
5,500.00	7.84	344.40	5,469.72	434.19	-121.25	14,651,834.82	1,793,127.35	40.34224396	-104.45195944
5,600.00	7.84	344.40	5,568.78	447.33	-124.92	14,651,847.94	1,793,123.60	40.34228004	-104.45197261
5,700.00	7.84	344.40	5,667.85	460.47	-128.58	14,651,861.06	1,793,119.84	40.34231612	-104.45198578
5,800.00	7.84	344.40	5,766.91	473.61	-132.25	14,651,874.17	1,793,116.09	40.34235221	-104.45199895
5,900.00	7.84	344.40	5,865.98	486.75	-135.92	14,651,887.29	1,793,112.34	40.34238829	-104.45201212
6,000.00	7.84	344.40	5,965.04	499.89	-139.59	14,651,900.41	1,793,108.59	40.34242437	-104.45202529
6,083.56	7.84	344.40	6,047.82	510.87	-142.66	14,651,911.37	1,793,105.46	40.34245452	-104.45203629
Begin 10°/100' build/turn									
6,100.00	8.43	333.52	6,064.10	513.03	-143.50	14,651,913.52	1,793,104.61	40.34246045	-104.45203930
6,200.00	15.65	298.24	6,161.95	526.00	-158.69	14,651,926.40	1,793,089.34	40.34249607	-104.45209380
6,300.00	24.85	286.61	6,255.71	538.42	-190.78	14,651,938.62	1,793,057.16	40.34253018	-104.45220900
6,400.00	34.48	281.11	6,342.51	549.91	-238.82	14,651,949.81	1,793,009.06	40.34256173	-104.45238137
6,500.00	44.26	277.79	6,419.74	560.12	-301.33	14,651,959.64	1,792,946.49	40.34258976	-104.45260570
6,600.00	54.11	275.48	6,485.02	568.74	-376.41	14,651,967.79	1,792,871.35	40.34261343	-104.45287515
6,700.00	63.99	273.68	6,536.40	575.51	-461.79	14,651,974.03	1,792,785.93	40.34263201	-104.45318156
6,800.00	73.89	272.17	6,572.29	580.22	-554.87	14,651,978.17	1,792,692.82	40.34264494	-104.45351559
6,900.00	83.80	270.79	6,591.62	582.73	-652.83	14,651,980.07	1,792,594.86	40.34265183	-104.45386712
6,962.57	90.00	269.97	6,595.00	583.15	-715.27	14,651,980.10	1,792,532.41	40.34265297	-104.45409121
LP Begin 90° lateral									
7,000.00	90.00	269.97	6,595.00	583.12	-752.70	14,651,979.85	1,792,494.98	40.34265291	-104.45422554
7,100.00	90.00	269.97	6,595.00	583.07	-852.70	14,651,979.17	1,792,394.98	40.34265275	-104.45458441
7,200.00	90.00	269.97	6,595.00	583.02	-952.70	14,651,978.50	1,792,294.99	40.34265259	-104.45494327
7,300.00	90.00	269.97	6,595.00	582.96	-1,052.70	14,651,977.82	1,792,194.99	40.34265243	-104.45530214
7,400.00	90.00	269.97	6,595.00	582.91	-1,152.70	14,651,977.15	1,792,094.99	40.34265227	-104.45566101
7,500.00	90.00	269.97	6,595.00	582.85	-1,252.70	14,651,976.48	1,791,994.99	40.34265211	-104.45601988
7,600.00	90.00	269.97	6,595.00	582.80	-1,352.70	14,651,975.80	1,791,895.00	40.34265194	-104.45637875
7,700.00	90.00	269.97	6,595.00	582.74	-1,452.70	14,651,975.13	1,791,795.00	40.34265178	-104.45673761
7,800.00	90.00	269.97	6,595.00	582.69	-1,552.70	14,651,974.45	1,791,695.00	40.34265161	-104.45709648
7,900.00	90.00	269.97	6,595.00	582.64	-1,652.70	14,651,973.78	1,791,595.00	40.34265144	-104.45745535
8,000.00	90.00	269.97	6,595.00	582.58	-1,752.70	14,651,973.11	1,791,495.01	40.34265128	-104.45781422
8,100.00	90.00	269.97	6,595.00	582.53	-1,852.70	14,651,972.43	1,791,395.01	40.34265111	-104.45817309
8,200.00	90.00	269.97	6,595.00	582.47	-1,952.70	14,651,971.76	1,791,295.01	40.34265094	-104.45853195
8,300.00	90.00	269.97	6,595.00	582.42	-2,052.70	14,651,971.08	1,791,195.01	40.34265077	-104.45889082
8,400.00	90.00	269.97	6,595.00	582.36	-2,152.70	14,651,970.41	1,791,095.02	40.34265059	-104.45924969
8,500.00	90.00	269.97	6,595.00	582.31	-2,252.70	14,651,969.73	1,790,995.02	40.34265042	-104.45960856
8,600.00	90.00	269.97	6,595.00	582.26	-2,352.70	14,651,969.06	1,790,895.02	40.34265024	-104.45996743
8,700.00	90.00	269.97	6,595.00	582.20	-2,452.70	14,651,968.39	1,790,795.02	40.34265007	-104.46032629
8,800.00	90.00	269.97	6,595.00	582.15	-2,552.70	14,651,967.71	1,790,695.03	40.34264989	-104.46068516
8,900.00	90.00	269.97	6,595.00	582.09	-2,652.70	14,651,967.04	1,790,595.03	40.34264971	-104.46104403
9,000.00	90.00	269.97	6,595.00	582.04	-2,752.70	14,651,966.36	1,790,495.03	40.34264953	-104.46140290
9,100.00	90.00	269.97	6,595.00	581.98	-2,852.70	14,651,965.69	1,790,395.03	40.34264935	-104.46176177
9,200.00	90.00	269.97	6,595.00	581.93	-2,952.70	14,651,965.02	1,790,295.04	40.34264917	-104.46212063
9,300.00	90.00	269.97	6,595.00	581.88	-3,052.70	14,651,964.34	1,790,195.04	40.34264899	-104.46247950
9,400.00	90.00	269.97	6,595.00	581.82	-3,152.70	14,651,963.67	1,790,095.04	40.34264881	-104.46283837
9,500.00	90.00	269.97	6,595.00	581.77	-3,252.70	14,651,962.99	1,789,995.04	40.34264862	-104.46319724
9,600.00	90.00	269.97	6,595.00	581.71	-3,352.70	14,651,962.32	1,789,895.05	40.34264844	-104.46355611
9,700.00	90.00	269.97	6,595.00	581.66	-3,452.70	14,651,961.65	1,789,795.05	40.34264825	-104.46391497
9,800.00	90.00	269.97	6,595.00	581.60	-3,552.70	14,651,960.97	1,789,695.05	40.34264806	-104.46427384
9,900.00	90.00	269.97	6,595.00	581.55	-3,652.70	14,651,960.30	1,789,595.05	40.34264787	-104.46463271
10,000.00	90.00	269.97	6,595.00	581.50	-3,752.70	14,651,959.62	1,789,495.05	40.34264768	-104.46499158

<b>Database:</b>	DB_Aug0116_LT_v14	<b>Local Co-ordinate Reference:</b>	Well Silverton 5-03-4L
<b>Company:</b>	Confluence Resources	<b>TVD Reference:</b>	RKB=4630+24 @ 4654.00ft
<b>Project:</b>	Weld County, Colorado	<b>MD Reference:</b>	RKB=4630+24 @ 4654.00ft
<b>Site:</b>	Section 04-T04N-R63W	<b>North Reference:</b>	True
<b>Well:</b>	Silverton 5-03-4L	<b>Survey Calculation Method:</b>	Minimum Curvature
<b>Wellbore:</b>	Original Hole		
<b>Design:</b>	plan1		

Planned Survey									
Measured Depth (ft)	Inclination (°)	Azimuth (°)	Vertical Depth (ft)	+N/-S (ft)	+E/-W (ft)	Map Northing (usft)	Map Easting (usft)	Latitude	Longitude
10,100.00	90.00	269.97	6,595.00	581.44	-3,852.70	14,651,958.95	1,789,395.06	40.34264749	-104.46535045
10,200.00	90.00	269.97	6,595.00	581.39	-3,952.70	14,651,958.28	1,789,295.06	40.34264730	-104.46570932
10,300.00	90.00	269.97	6,595.00	581.33	-4,052.70	14,651,957.60	1,789,195.06	40.34264710	-104.46606818
10,400.00	90.00	269.97	6,595.00	581.28	-4,152.70	14,651,956.93	1,789,095.06	40.34264691	-104.46642705
10,500.00	90.00	269.97	6,595.00	581.22	-4,252.70	14,651,956.25	1,788,995.07	40.34264671	-104.46678592
10,600.00	90.00	269.97	6,595.00	581.17	-4,352.70	14,651,955.58	1,788,895.07	40.34264651	-104.46714479
10,700.00	90.00	269.97	6,595.00	581.12	-4,452.70	14,651,954.91	1,788,795.07	40.34264632	-104.46750366
10,800.00	90.00	269.97	6,595.00	581.06	-4,552.70	14,651,954.23	1,788,695.07	40.34264612	-104.46786252
10,900.00	90.00	269.97	6,595.00	581.01	-4,652.70	14,651,953.56	1,788,595.08	40.34264592	-104.46822139
11,000.00	90.00	269.97	6,595.00	580.95	-4,752.70	14,651,952.88	1,788,495.08	40.34264572	-104.46858026
11,100.00	90.00	269.97	6,595.00	580.90	-4,852.70	14,651,952.21	1,788,395.08	40.34264551	-104.46893913
11,200.00	90.00	269.97	6,595.00	580.84	-4,952.70	14,651,951.54	1,788,295.08	40.34264531	-104.46929800
11,300.00	90.00	269.97	6,595.00	580.79	-5,052.70	14,651,950.86	1,788,195.09	40.34264510	-104.46965687
11,400.00	90.00	269.97	6,595.00	580.74	-5,152.70	14,651,950.19	1,788,095.09	40.34264490	-104.47001573
11,500.00	90.00	269.97	6,595.00	580.68	-5,252.70	14,651,949.51	1,787,995.09	40.34264469	-104.47037460
11,600.00	90.00	269.97	6,595.00	580.63	-5,352.70	14,651,948.84	1,787,895.09	40.34264448	-104.47073347
11,700.00	90.00	269.97	6,595.00	580.57	-5,452.70	14,651,948.17	1,787,795.10	40.34264427	-104.47109234
11,800.00	90.00	269.97	6,595.00	580.52	-5,552.70	14,651,947.49	1,787,695.10	40.34264406	-104.47145121
11,900.00	90.00	269.97	6,595.00	580.46	-5,652.70	14,651,946.82	1,787,595.10	40.34264385	-104.47181008
12,000.00	90.00	269.97	6,595.00	580.41	-5,752.70	14,651,946.14	1,787,495.10	40.34264364	-104.47216894
12,100.00	90.00	269.97	6,595.00	580.36	-5,852.70	14,651,945.47	1,787,395.11	40.34264343	-104.47252781
12,200.00	90.00	269.97	6,595.00	580.30	-5,952.70	14,651,944.80	1,787,295.11	40.34264321	-104.47288668
12,300.00	90.00	269.97	6,595.00	580.25	-6,052.70	14,651,944.12	1,787,195.11	40.34264299	-104.47324555
12,400.00	90.00	269.97	6,595.00	580.19	-6,152.70	14,651,943.45	1,787,095.11	40.34264278	-104.47360442
12,500.00	90.00	269.97	6,595.00	580.14	-6,252.70	14,651,942.77	1,786,995.12	40.34264256	-104.47396329
12,600.00	90.00	269.97	6,595.00	580.08	-6,352.70	14,651,942.10	1,786,895.12	40.34264234	-104.47432215
12,700.00	90.00	269.97	6,595.00	580.03	-6,452.70	14,651,941.43	1,786,795.12	40.34264212	-104.47468102
12,800.00	90.00	269.97	6,595.00	579.98	-6,552.70	14,651,940.75	1,786,695.12	40.34264190	-104.47503989
12,900.00	90.00	269.97	6,595.00	579.92	-6,652.70	14,651,940.08	1,786,595.13	40.34264168	-104.47539876
13,000.00	90.00	269.97	6,595.00	579.87	-6,752.70	14,651,939.40	1,786,495.13	40.34264145	-104.47575763
13,100.00	90.00	269.97	6,595.00	579.81	-6,852.70	14,651,938.73	1,786,395.13	40.34264123	-104.47611650
13,200.00	90.00	269.97	6,595.00	579.76	-6,952.70	14,651,938.06	1,786,295.13	40.34264100	-104.47647537
13,300.00	90.00	269.97	6,595.00	579.70	-7,052.70	14,651,937.38	1,786,195.14	40.34264077	-104.47683423
13,400.00	90.00	269.97	6,595.00	579.65	-7,152.70	14,651,936.71	1,786,095.14	40.34264055	-104.47719310
13,500.00	90.00	269.97	6,595.00	579.60	-7,252.70	14,651,936.03	1,785,995.14	40.34264032	-104.47755197
13,600.00	90.00	269.97	6,595.00	579.54	-7,352.70	14,651,935.36	1,785,895.14	40.34264009	-104.47791084
13,700.00	90.00	269.97	6,595.00	579.49	-7,452.70	14,651,934.69	1,785,795.15	40.34263985	-104.47826971
13,800.00	90.00	269.97	6,595.00	579.43	-7,552.70	14,651,934.01	1,785,695.15	40.34263962	-104.47862858
13,900.00	90.00	269.97	6,595.00	579.38	-7,652.70	14,651,933.34	1,785,595.15	40.34263939	-104.47898745
14,000.00	90.00	269.97	6,595.00	579.32	-7,752.70	14,651,932.66	1,785,495.15	40.34263915	-104.47934631
14,100.00	90.00	269.97	6,595.00	579.27	-7,852.70	14,651,931.99	1,785,395.16	40.34263892	-104.47970518
14,200.00	90.00	269.97	6,595.00	579.22	-7,952.70	14,651,931.32	1,785,295.16	40.34263868	-104.48006405
14,300.00	90.00	269.97	6,595.00	579.16	-8,052.70	14,651,930.64	1,785,195.16	40.34263844	-104.48042292
14,400.00	90.00	269.97	6,595.00	579.11	-8,152.70	14,651,929.97	1,785,095.16	40.34263820	-104.48078179
14,500.00	90.00	269.97	6,595.00	579.05	-8,252.70	14,651,929.29	1,784,995.17	40.34263796	-104.48114066
14,600.00	90.00	269.97	6,595.00	579.00	-8,352.70	14,651,928.62	1,784,895.17	40.34263772	-104.48149953
14,700.00	90.00	269.97	6,595.00	578.94	-8,452.70	14,651,927.95	1,784,795.17	40.34263748	-104.48185839
14,800.00	90.00	269.97	6,595.00	578.89	-8,552.70	14,651,927.27	1,784,695.17	40.34263723	-104.48221726
14,900.00	90.00	269.97	6,595.00	578.84	-8,652.70	14,651,926.60	1,784,595.18	40.34263699	-104.48257613
15,000.00	90.00	269.97	6,595.00	578.78	-8,752.70	14,651,925.92	1,784,495.18	40.34263674	-104.48293500
15,100.00	90.00	269.97	6,595.00	578.73	-8,852.70	14,651,925.25	1,784,395.18	40.34263649	-104.48329387
15,200.00	90.00	269.97	6,595.00	578.67	-8,952.70	14,651,924.58	1,784,295.18	40.34263625	-104.48365274
15,300.00	90.00	269.97	6,595.00	578.62	-9,052.70	14,651,923.90	1,784,195.19	40.34263600	-104.48401161
15,400.00	90.00	269.97	6,595.00	578.56	-9,152.70	14,651,923.23	1,784,095.19	40.34263575	-104.48437047
15,500.00	90.00	269.97	6,595.00	578.51	-9,252.70	14,651,922.55	1,783,995.19	40.34263550	-104.48472933

<b>Database:</b>	DB_Aug0116_LT_v14	<b>Local Co-ordinate Reference:</b>	Well Silverton 5-03-4L
<b>Company:</b>	Confluence Resources	<b>TVD Reference:</b>	RKB=4630+24 @ 4654.00ft
<b>Project:</b>	Weld County, Colorado	<b>MD Reference:</b>	RKB=4630+24 @ 4654.00ft
<b>Site:</b>	Section 04-T04N-R63W	<b>North Reference:</b>	True
<b>Well:</b>	Silverton 5-03-4L	<b>Survey Calculation Method:</b>	Minimum Curvature
<b>Wellbore:</b>	Original Hole		
<b>Design:</b>	plan1		

Planned Survey									
Measured Depth (ft)	Inclination (°)	Azimuth (°)	Vertical Depth (ft)	+N/-S (ft)	+E/-W (ft)	Map Northing (usft)	Map Easting (usft)	Latitude	Longitude
15,600.00	90.00	269.97	6,595.00	578.46	-9,352.70	14,651,921.88	1,783,895.19	40.34263524	-104.48508820
15,700.00	90.00	269.97	6,595.00	578.40	-9,452.70	14,651,921.21	1,783,795.20	40.34263499	-104.48544707
15,800.00	90.00	269.97	6,595.00	578.35	-9,552.70	14,651,920.53	1,783,695.20	40.34263473	-104.48580594
15,900.00	90.00	269.97	6,595.00	578.29	-9,652.70	14,651,919.86	1,783,595.20	40.34263448	-104.48616481
16,000.00	90.00	269.97	6,595.00	578.24	-9,752.70	14,651,919.18	1,783,495.20	40.34263422	-104.48652368
16,100.00	90.00	269.97	6,595.00	578.18	-9,852.70	14,651,918.51	1,783,395.21	40.34263396	-104.48688255
16,200.00	90.00	269.97	6,595.00	578.13	-9,952.70	14,651,917.84	1,783,295.21	40.34263370	-104.48724142
16,300.00	90.00	269.97	6,595.00	578.07	-10,052.70	14,651,917.16	1,783,195.21	40.34263344	-104.48760028
16,368.88	90.00	269.97	6,595.00	578.04	-10,121.58	14,651,916.70	1,783,126.33	40.34263326	-104.48784748
PBHL/TD 16368.88 MD 6595.00 TVD									

Design Targets									
Target Name - hit/miss target - Shape	Dip Angle (°)	Dip Dir. (°)	TVD (ft)	+N/-S (ft)	+E/-W (ft)	Northing (usft)	Easting (usft)	Latitude	Longitude
Silverton 5-03-4L SL 264 - plan hits target center - Point	0.00	0.00	24.00	0.00	0.00	14,651,401.40	1,793,251.28	40.34105171	-104.45152433
Silverton 5-03-4L BHL 2: - plan hits target center - Point	0.00	0.00	6,595.00	578.04	-10,121.58	14,651,916.70	1,783,126.33	40.34263326	-104.48784748
Silverton 5-03-4L LP 22C - plan hits target center - Point	0.00	0.00	6,595.00	583.15	-715.27	14,651,980.10	1,792,532.41	40.34265297	-104.45409121

Plan Annotations				
Measured Depth (ft)	Vertical Depth (ft)	Local Coordinates		Comment
		+N/-S (ft)	+E/-W (ft)	
2,000.00	2,000.00	0.00	0.00	KOP Begin 2°/100' build
2,392.06	2,390.84	25.80	-7.20	Begin 7.84° tangent section
6,083.56	6,047.82	510.87	-142.66	Begin 10°/100' build/turn
6,962.57	6,595.00	583.15	-715.27	LP Begin 90° lateral
16,368.88	6,595.00	578.04	-10,121.58	PBHL/TD 16368.88 MD 6595.00 TVD

<b>Database:</b>	DB_Aug0116_LT_v14	<b>Local Co-ordinate Reference:</b>	Well Silverton 5-03-4L
<b>Company:</b>	Confluence Resources	<b>TVD Reference:</b>	RKB=4630+24 @ 4654.00ft
<b>Project:</b>	Weld County, Colorado	<b>MD Reference:</b>	RKB=4630+24 @ 4654.00ft
<b>Site:</b>	Section 04-T04N-R63W	<b>North Reference:</b>	True
<b>Well:</b>	Silverton 5-03-4L	<b>Survey Calculation Method:</b>	Minimum Curvature
<b>Wellbore:</b>	Original Hole		
<b>Design:</b>	plan1		

<b>Project</b>	Weld County, Colorado		
<b>Map System:</b>	Universal Transverse Mercator (US Survey Feet)	<b>System Datum:</b>	Mean Sea Level
<b>Geo Datum:</b>	NAD83 Colorado - HARN		
<b>Map Zone:</b>	Zone 13N (108 W to 102 W)		

Site		Section 04-T04N-R63W			
Site Position:		Northing:	14,650,073.90 usft	Latitude:	40.33740565
From:	Map	Easting:	1,793,302.13 usft	Longitude:	-104.45137138
Position Uncertainty:	0.00 ft	Slot Radius:	13-3/16 "	Grid Convergence:	0.36 °

Well	Silverton 5-03-4L, Surf loc: 2648 FSL 255 FWL Section 04-T04N-R63W					
Well Position	+N/-S	1,327.79 ft	Northing:	14,651,401.40 usft	Latitude:	40.34105171
	+E/-W	-42.62 ft	Easting:	1,793,251.28 usft	Longitude:	-104.45152433
Position Uncertainty		0.00 ft	Wellhead Elevation:		Ground Level:	4,630.00 ft

<b>Wellbore</b>	Original Hole				
<b>Magnetics</b>	<b>Model Name</b>	<b>Sample Date</b>	<b>Declination (°)</b>	<b>Dip Angle (°)</b>	<b>Field Strength (nT)</b>
	HDGM	5/29/2018	8.08	66.90	52,227.80000000

<b>Design</b>	plan1			
<b>Audit Notes:</b>				
<b>Version:</b>	<b>Phase:</b>	PLAN	<b>Tie On Depth:</b>	0.00
<b>Vertical Section:</b>	<b>Depth From (TVD) (ft)</b>	<b>+N/-S (ft)</b>	<b>+E/-W (ft)</b>	<b>Direction (°)</b>
	0.00	0.00	0.00	273.27

<b>Plan Survey Tool Program</b>	<b>Date</b>	5/29/2018		
<b>Depth From (ft)</b>	<b>Depth To (ft)</b>	<b>Survey (Wellbore)</b>	<b>Tool Name</b>	<b>Remarks</b>
1	0.00	16,368.88	plan1 (Original Hole)	

<b>Plan Sections</b>										
<b>Measured Depth (ft)</b>	<b>Inclination (°)</b>	<b>Azimuth (°)</b>	<b>Vertical Depth (ft)</b>	<b>+N/-S (ft)</b>	<b>+E/-W (ft)</b>	<b>Dogleg Rate (°/100ft)</b>	<b>Build Rate (°/100ft)</b>	<b>Turn Rate (°/100ft)</b>	<b>TFO (°)</b>	<b>Target</b>
0.00	0.00	0.00	0.00	0.00	0.00	0.00	0.00	0.00	0.00	
2,000.00	0.00	0.00	2,000.00	0.00	0.00	0.00	0.00	0.00	0.00	
2,392.06	7.84	344.40	2,390.84	25.80	-7.20	2.00	2.00	0.00	344.40	
6,083.56	7.84	344.40	6,047.82	510.87	-142.66	0.00	0.00	0.00	0.00	
6,962.57	90.00	269.97	6,595.00	583.15	-715.27	10.00	9.35	-8.47	-74.57	Silverton 5-03-4L LP 2
16,368.88	90.00	269.97	6,595.00	578.04	-10,121.58	0.00	0.00	0.00	0.00	Silverton 5-03-4L BHL



<b>Database:</b>	DB_Aug0116_LT_v14	<b>Local Co-ordinate Reference:</b>	Well Silverton 5-03-4L
<b>Company:</b>	Confluence Resources	<b>TVD Reference:</b>	RKB=4630+24 @ 4654.00ft
<b>Project:</b>	Weld County, Colorado	<b>MD Reference:</b>	RKB=4630+24 @ 4654.00ft
<b>Site:</b>	Section 04-T04N-R63W	<b>North Reference:</b>	True
<b>Well:</b>	Silverton 5-03-4L	<b>Survey Calculation Method:</b>	Minimum Curvature
<b>Wellbore:</b>	Original Hole		
<b>Design:</b>	plan1		

Planned Survey									
Measured Depth (ft)	Inclination (°)	Azimuth (°)	Vertical Depth (ft)	+N/-S (ft)	+E/-W (ft)	Vertical Section (ft)	Dogleg Rate (°/100ft)	Build Rate (°/100ft)	Turn Rate (°/100ft)
0.00	0.00	0.00	0.00	0.00	0.00	0.00	0.00	0.00	0.00
100.00	0.00	0.00	100.00	0.00	0.00	0.00	0.00	0.00	0.00
200.00	0.00	0.00	200.00	0.00	0.00	0.00	0.00	0.00	0.00
300.00	0.00	0.00	300.00	0.00	0.00	0.00	0.00	0.00	0.00
400.00	0.00	0.00	400.00	0.00	0.00	0.00	0.00	0.00	0.00
500.00	0.00	0.00	500.00	0.00	0.00	0.00	0.00	0.00	0.00
600.00	0.00	0.00	600.00	0.00	0.00	0.00	0.00	0.00	0.00
700.00	0.00	0.00	700.00	0.00	0.00	0.00	0.00	0.00	0.00
800.00	0.00	0.00	800.00	0.00	0.00	0.00	0.00	0.00	0.00
900.00	0.00	0.00	900.00	0.00	0.00	0.00	0.00	0.00	0.00
1,000.00	0.00	0.00	1,000.00	0.00	0.00	0.00	0.00	0.00	0.00
1,100.00	0.00	0.00	1,100.00	0.00	0.00	0.00	0.00	0.00	0.00
1,200.00	0.00	0.00	1,200.00	0.00	0.00	0.00	0.00	0.00	0.00
1,300.00	0.00	0.00	1,300.00	0.00	0.00	0.00	0.00	0.00	0.00
1,400.00	0.00	0.00	1,400.00	0.00	0.00	0.00	0.00	0.00	0.00
1,500.00	0.00	0.00	1,500.00	0.00	0.00	0.00	0.00	0.00	0.00
1,600.00	0.00	0.00	1,600.00	0.00	0.00	0.00	0.00	0.00	0.00
1,700.00	0.00	0.00	1,700.00	0.00	0.00	0.00	0.00	0.00	0.00
1,800.00	0.00	0.00	1,800.00	0.00	0.00	0.00	0.00	0.00	0.00
1,900.00	0.00	0.00	1,900.00	0.00	0.00	0.00	0.00	0.00	0.00
2,000.00	0.00	0.00	2,000.00	0.00	0.00	0.00	0.00	0.00	0.00
<b>KOP Begin 2°/100' build</b>									
2,100.00	2.00	344.40	2,099.98	1.68	-0.47	0.56	2.00	2.00	0.00
2,200.00	4.00	344.40	2,199.84	6.72	-1.88	2.26	2.00	2.00	0.00
2,300.00	6.00	344.40	2,299.45	15.12	-4.22	5.08	2.00	2.00	0.00
2,392.06	7.84	344.40	2,390.84	25.80	-7.20	8.66	2.00	2.00	0.00
<b>Begin 7.84° tangent section</b>									
2,400.00	7.84	344.40	2,398.70	26.84	-7.50	9.01	0.00	0.00	0.00
2,500.00	7.84	344.40	2,497.77	39.98	-11.16	13.43	0.00	0.00	0.00
2,600.00	7.84	344.40	2,596.83	53.12	-14.83	17.84	0.00	0.00	0.00
2,700.00	7.84	344.40	2,695.90	66.26	-18.50	22.25	0.00	0.00	0.00
2,800.00	7.84	344.40	2,794.96	79.40	-22.17	26.66	0.00	0.00	0.00
2,900.00	7.84	344.40	2,894.03	92.54	-25.84	31.08	0.00	0.00	0.00
3,000.00	7.84	344.40	2,993.09	105.68	-29.51	35.49	0.00	0.00	0.00
3,100.00	7.84	344.40	3,092.16	118.82	-33.18	39.90	0.00	0.00	0.00
3,200.00	7.84	344.40	3,191.22	131.96	-36.85	44.31	0.00	0.00	0.00
3,300.00	7.84	344.40	3,290.29	145.10	-40.52	48.73	0.00	0.00	0.00
3,400.00	7.84	344.40	3,389.35	158.24	-44.19	53.14	0.00	0.00	0.00
3,500.00	7.84	344.40	3,488.42	171.38	-47.86	57.55	0.00	0.00	0.00
3,600.00	7.84	344.40	3,587.48	184.52	-51.53	61.96	0.00	0.00	0.00
3,700.00	7.84	344.40	3,686.55	197.66	-55.20	66.38	0.00	0.00	0.00
3,800.00	7.84	344.40	3,785.61	210.80	-58.87	70.79	0.00	0.00	0.00
3,900.00	7.84	344.40	3,884.68	223.94	-62.54	75.20	0.00	0.00	0.00
4,000.00	7.84	344.40	3,983.74	237.08	-66.21	79.62	0.00	0.00	0.00
4,100.00	7.84	344.40	4,082.81	250.22	-69.87	84.03	0.00	0.00	0.00
4,200.00	7.84	344.40	4,181.87	263.36	-73.54	88.44	0.00	0.00	0.00
4,300.00	7.84	344.40	4,280.94	276.50	-77.21	92.85	0.00	0.00	0.00
4,400.00	7.84	344.40	4,380.00	289.64	-80.88	97.27	0.00	0.00	0.00
4,500.00	7.84	344.40	4,479.07	302.78	-84.55	101.68	0.00	0.00	0.00
4,600.00	7.84	344.40	4,578.13	315.92	-88.22	106.09	0.00	0.00	0.00
4,700.00	7.84	344.40	4,677.20	329.06	-91.89	110.50	0.00	0.00	0.00
4,800.00	7.84	344.40	4,776.26	342.21	-95.56	114.92	0.00	0.00	0.00
4,900.00	7.84	344.40	4,875.33	355.35	-99.23	119.33	0.00	0.00	0.00



<b>Database:</b>	DB_Aug0116_LT_v14	<b>Local Co-ordinate Reference:</b>	Well Silverton 5-03-4L
<b>Company:</b>	Confluence Resources	<b>TVD Reference:</b>	RKB=4630+24 @ 4654.00ft
<b>Project:</b>	Weld County, Colorado	<b>MD Reference:</b>	RKB=4630+24 @ 4654.00ft
<b>Site:</b>	Section 04-T04N-R63W	<b>North Reference:</b>	True
<b>Well:</b>	Silverton 5-03-4L	<b>Survey Calculation Method:</b>	Minimum Curvature
<b>Wellbore:</b>	Original Hole		
<b>Design:</b>	plan1		

Planned Survey									
Measured Depth (ft)	Inclination (°)	Azimuth (°)	Vertical Depth (ft)	+N/-S (ft)	+E/-W (ft)	Vertical Section (ft)	Dogleg Rate (°/100ft)	Build Rate (°/100ft)	Turn Rate (°/100ft)
5,000.00	7.84	344.40	4,974.39	368.49	-102.90	123.74	0.00	0.00	0.00
5,100.00	7.84	344.40	5,073.46	381.63	-106.57	128.15	0.00	0.00	0.00
5,200.00	7.84	344.40	5,172.52	394.77	-110.24	132.57	0.00	0.00	0.00
5,300.00	7.84	344.40	5,271.59	407.91	-113.91	136.98	0.00	0.00	0.00
5,400.00	7.84	344.40	5,370.65	421.05	-117.58	141.39	0.00	0.00	0.00
5,500.00	7.84	344.40	5,469.72	434.19	-121.25	145.80	0.00	0.00	0.00
5,600.00	7.84	344.40	5,568.78	447.33	-124.92	150.22	0.00	0.00	0.00
5,700.00	7.84	344.40	5,667.85	460.47	-128.58	154.63	0.00	0.00	0.00
5,800.00	7.84	344.40	5,766.91	473.61	-132.25	159.04	0.00	0.00	0.00
5,900.00	7.84	344.40	5,865.98	486.75	-135.92	163.45	0.00	0.00	0.00
6,000.00	7.84	344.40	5,965.04	499.89	-139.59	167.87	0.00	0.00	0.00
6,083.56	7.84	344.40	6,047.82	510.87	-142.66	171.55	0.00	0.00	0.00
Begin 10°/100' build/turn									
6,100.00	8.43	333.52	6,064.10	513.03	-143.50	172.52	10.00	3.57	-66.15
6,200.00	15.65	298.24	6,161.95	526.00	-158.69	188.42	10.00	7.22	-35.28
6,300.00	24.85	286.61	6,255.71	538.42	-190.78	221.17	10.00	9.20	-11.62
6,400.00	34.48	281.11	6,342.51	549.91	-238.82	269.78	10.00	9.63	-5.51
6,500.00	44.26	277.79	6,419.74	560.12	-301.33	332.77	10.00	9.78	-3.31
6,600.00	54.11	275.48	6,485.02	568.74	-376.41	408.23	10.00	9.85	-2.31
6,700.00	63.99	273.68	6,536.40	575.51	-461.79	493.85	10.00	9.88	-1.80
6,800.00	73.89	272.17	6,572.29	580.22	-554.87	587.05	10.00	9.90	-1.52
6,900.00	83.80	270.79	6,591.62	582.73	-652.83	684.99	10.00	9.91	-1.37
6,962.57	90.00	269.97	6,595.00	583.15	-715.27	747.36	10.00	9.91	-1.32
LP Begin 90° lateral									
7,000.00	90.00	269.97	6,595.00	583.12	-752.70	784.72	0.00	0.00	0.00
7,100.00	90.00	269.97	6,595.00	583.07	-852.70	884.56	0.00	0.00	0.00
7,200.00	90.00	269.97	6,595.00	583.02	-952.70	984.39	0.00	0.00	0.00
7,300.00	90.00	269.97	6,595.00	582.96	-1,052.70	1,084.23	0.00	0.00	0.00
7,400.00	90.00	269.97	6,595.00	582.91	-1,152.70	1,184.06	0.00	0.00	0.00
7,500.00	90.00	269.97	6,595.00	582.85	-1,252.70	1,283.90	0.00	0.00	0.00
7,600.00	90.00	269.97	6,595.00	582.80	-1,352.70	1,383.73	0.00	0.00	0.00
7,700.00	90.00	269.97	6,595.00	582.74	-1,452.70	1,483.56	0.00	0.00	0.00
7,800.00	90.00	269.97	6,595.00	582.69	-1,552.70	1,583.40	0.00	0.00	0.00
7,900.00	90.00	269.97	6,595.00	582.64	-1,652.70	1,683.23	0.00	0.00	0.00
8,000.00	90.00	269.97	6,595.00	582.58	-1,752.70	1,783.07	0.00	0.00	0.00
8,100.00	90.00	269.97	6,595.00	582.53	-1,852.70	1,882.90	0.00	0.00	0.00
8,200.00	90.00	269.97	6,595.00	582.47	-1,952.70	1,982.74	0.00	0.00	0.00
8,300.00	90.00	269.97	6,595.00	582.42	-2,052.70	2,082.57	0.00	0.00	0.00
8,400.00	90.00	269.97	6,595.00	582.36	-2,152.70	2,182.40	0.00	0.00	0.00
8,500.00	90.00	269.97	6,595.00	582.31	-2,252.70	2,282.24	0.00	0.00	0.00
8,600.00	90.00	269.97	6,595.00	582.26	-2,352.70	2,382.07	0.00	0.00	0.00
8,700.00	90.00	269.97	6,595.00	582.20	-2,452.70	2,481.91	0.00	0.00	0.00
8,800.00	90.00	269.97	6,595.00	582.15	-2,552.70	2,581.74	0.00	0.00	0.00
8,900.00	90.00	269.97	6,595.00	582.09	-2,652.70	2,681.57	0.00	0.00	0.00
9,000.00	90.00	269.97	6,595.00	582.04	-2,752.70	2,781.41	0.00	0.00	0.00
9,100.00	90.00	269.97	6,595.00	581.98	-2,852.70	2,881.24	0.00	0.00	0.00
9,200.00	90.00	269.97	6,595.00	581.93	-2,952.70	2,981.08	0.00	0.00	0.00
9,300.00	90.00	269.97	6,595.00	581.88	-3,052.70	3,080.91	0.00	0.00	0.00
9,400.00	90.00	269.97	6,595.00	581.82	-3,152.70	3,180.75	0.00	0.00	0.00
9,500.00	90.00	269.97	6,595.00	581.77	-3,252.70	3,280.58	0.00	0.00	0.00
9,600.00	90.00	269.97	6,595.00	581.71	-3,352.70	3,380.41	0.00	0.00	0.00
9,700.00	90.00	269.97	6,595.00	581.66	-3,452.70	3,480.25	0.00	0.00	0.00
9,800.00	90.00	269.97	6,595.00	581.60	-3,552.70	3,580.08	0.00	0.00	0.00
9,900.00	90.00	269.97	6,595.00	581.55	-3,652.70	3,679.92	0.00	0.00	0.00

<b>Database:</b>	DB_Aug0116_LT_v14	<b>Local Co-ordinate Reference:</b>	Well Silverton 5-03-4L
<b>Company:</b>	Confluence Resources	<b>TVD Reference:</b>	RKB=4630+24 @ 4654.00ft
<b>Project:</b>	Weld County, Colorado	<b>MD Reference:</b>	RKB=4630+24 @ 4654.00ft
<b>Site:</b>	Section 04-T04N-R63W	<b>North Reference:</b>	True
<b>Well:</b>	Silverton 5-03-4L	<b>Survey Calculation Method:</b>	Minimum Curvature
<b>Wellbore:</b>	Original Hole		
<b>Design:</b>	plan1		

Planned Survey									
Measured Depth (ft)	Inclination (°)	Azimuth (°)	Vertical Depth (ft)	+N/-S (ft)	+E/-W (ft)	Vertical Section (ft)	Dogleg Rate (°/100ft)	Build Rate (°/100ft)	Turn Rate (°/100ft)
10,000.00	90.00	269.97	6,595.00	581.50	-3,752.70	3,779.75	0.00	0.00	0.00
10,100.00	90.00	269.97	6,595.00	581.44	-3,852.70	3,879.59	0.00	0.00	0.00
10,200.00	90.00	269.97	6,595.00	581.39	-3,952.70	3,979.42	0.00	0.00	0.00
10,300.00	90.00	269.97	6,595.00	581.33	-4,052.70	4,079.25	0.00	0.00	0.00
10,400.00	90.00	269.97	6,595.00	581.28	-4,152.70	4,179.09	0.00	0.00	0.00
10,500.00	90.00	269.97	6,595.00	581.22	-4,252.70	4,278.92	0.00	0.00	0.00
10,600.00	90.00	269.97	6,595.00	581.17	-4,352.70	4,378.76	0.00	0.00	0.00
10,700.00	90.00	269.97	6,595.00	581.12	-4,452.70	4,478.59	0.00	0.00	0.00
10,800.00	90.00	269.97	6,595.00	581.06	-4,552.70	4,578.42	0.00	0.00	0.00
10,900.00	90.00	269.97	6,595.00	581.01	-4,652.70	4,678.26	0.00	0.00	0.00
11,000.00	90.00	269.97	6,595.00	580.95	-4,752.70	4,778.09	0.00	0.00	0.00
11,100.00	90.00	269.97	6,595.00	580.90	-4,852.70	4,877.93	0.00	0.00	0.00
11,200.00	90.00	269.97	6,595.00	580.84	-4,952.70	4,977.76	0.00	0.00	0.00
11,300.00	90.00	269.97	6,595.00	580.79	-5,052.70	5,077.60	0.00	0.00	0.00
11,400.00	90.00	269.97	6,595.00	580.74	-5,152.70	5,177.43	0.00	0.00	0.00
11,500.00	90.00	269.97	6,595.00	580.68	-5,252.70	5,277.26	0.00	0.00	0.00
11,600.00	90.00	269.97	6,595.00	580.63	-5,352.70	5,377.10	0.00	0.00	0.00
11,700.00	90.00	269.97	6,595.00	580.57	-5,452.70	5,476.93	0.00	0.00	0.00
11,800.00	90.00	269.97	6,595.00	580.52	-5,552.70	5,576.77	0.00	0.00	0.00
11,900.00	90.00	269.97	6,595.00	580.46	-5,652.70	5,676.60	0.00	0.00	0.00
12,000.00	90.00	269.97	6,595.00	580.41	-5,752.70	5,776.44	0.00	0.00	0.00
12,100.00	90.00	269.97	6,595.00	580.36	-5,852.70	5,876.27	0.00	0.00	0.00
12,200.00	90.00	269.97	6,595.00	580.30	-5,952.70	5,976.10	0.00	0.00	0.00
12,300.00	90.00	269.97	6,595.00	580.25	-6,052.70	6,075.94	0.00	0.00	0.00
12,400.00	90.00	269.97	6,595.00	580.19	-6,152.70	6,175.77	0.00	0.00	0.00
12,500.00	90.00	269.97	6,595.00	580.14	-6,252.70	6,275.61	0.00	0.00	0.00
12,600.00	90.00	269.97	6,595.00	580.08	-6,352.70	6,375.44	0.00	0.00	0.00
12,700.00	90.00	269.97	6,595.00	580.03	-6,452.70	6,475.28	0.00	0.00	0.00
12,800.00	90.00	269.97	6,595.00	579.98	-6,552.70	6,575.11	0.00	0.00	0.00
12,900.00	90.00	269.97	6,595.00	579.92	-6,652.70	6,674.94	0.00	0.00	0.00
13,000.00	90.00	269.97	6,595.00	579.87	-6,752.70	6,774.78	0.00	0.00	0.00
13,100.00	90.00	269.97	6,595.00	579.81	-6,852.70	6,874.61	0.00	0.00	0.00
13,200.00	90.00	269.97	6,595.00	579.76	-6,952.70	6,974.45	0.00	0.00	0.00
13,300.00	90.00	269.97	6,595.00	579.70	-7,052.70	7,074.28	0.00	0.00	0.00
13,400.00	90.00	269.97	6,595.00	579.65	-7,152.70	7,174.11	0.00	0.00	0.00
13,500.00	90.00	269.97	6,595.00	579.60	-7,252.70	7,273.95	0.00	0.00	0.00
13,600.00	90.00	269.97	6,595.00	579.54	-7,352.70	7,373.78	0.00	0.00	0.00
13,700.00	90.00	269.97	6,595.00	579.49	-7,452.70	7,473.62	0.00	0.00	0.00
13,800.00	90.00	269.97	6,595.00	579.43	-7,552.70	7,573.45	0.00	0.00	0.00
13,900.00	90.00	269.97	6,595.00	579.38	-7,652.70	7,673.29	0.00	0.00	0.00
14,000.00	90.00	269.97	6,595.00	579.32	-7,752.70	7,773.12	0.00	0.00	0.00
14,100.00	90.00	269.97	6,595.00	579.27	-7,852.70	7,872.95	0.00	0.00	0.00
14,200.00	90.00	269.97	6,595.00	579.22	-7,952.70	7,972.79	0.00	0.00	0.00
14,300.00	90.00	269.97	6,595.00	579.16	-8,052.70	8,072.62	0.00	0.00	0.00
14,400.00	90.00	269.97	6,595.00	579.11	-8,152.70	8,172.46	0.00	0.00	0.00
14,500.00	90.00	269.97	6,595.00	579.05	-8,252.70	8,272.29	0.00	0.00	0.00
14,600.00	90.00	269.97	6,595.00	579.00	-8,352.70	8,372.13	0.00	0.00	0.00
14,700.00	90.00	269.97	6,595.00	578.94	-8,452.70	8,471.96	0.00	0.00	0.00
14,800.00	90.00	269.97	6,595.00	578.89	-8,552.70	8,571.79	0.00	0.00	0.00
14,900.00	90.00	269.97	6,595.00	578.84	-8,652.70	8,671.63	0.00	0.00	0.00
15,000.00	90.00	269.97	6,595.00	578.78	-8,752.70	8,771.46	0.00	0.00	0.00
15,100.00	90.00	269.97	6,595.00	578.73	-8,852.70	8,871.30	0.00	0.00	0.00
15,200.00	90.00	269.97	6,595.00	578.67	-8,952.70	8,971.13	0.00	0.00	0.00
15,300.00	90.00	269.97	6,595.00	578.62	-9,052.70	9,070.96	0.00	0.00	0.00

<b>Database:</b>	DB_Aug0116_LT_v14	<b>Local Co-ordinate Reference:</b>	Well Silverton 5-03-4L
<b>Company:</b>	Confluence Resources	<b>TVD Reference:</b>	RKB=4630+24 @ 4654.00ft
<b>Project:</b>	Weld County, Colorado	<b>MD Reference:</b>	RKB=4630+24 @ 4654.00ft
<b>Site:</b>	Section 04-T04N-R63W	<b>North Reference:</b>	True
<b>Well:</b>	Silverton 5-03-4L	<b>Survey Calculation Method:</b>	Minimum Curvature
<b>Wellbore:</b>	Original Hole		
<b>Design:</b>	plan1		

Planned Survey										
Measured Depth (ft)	Inclination (°)	Azimuth (°)	Vertical Depth (ft)	+N/-S (ft)	+E/-W (ft)	Vertical Section (ft)	Dogleg Rate (°/100ft)	Build Rate (°/100ft)	Turn Rate (°/100ft)	
15,400.00	90.00	269.97	6,595.00	578.56	-9,152.70	9,170.80	0.00	0.00	0.00	
15,500.00	90.00	269.97	6,595.00	578.51	-9,252.70	9,270.63	0.00	0.00	0.00	
15,600.00	90.00	269.97	6,595.00	578.46	-9,352.70	9,370.47	0.00	0.00	0.00	
15,700.00	90.00	269.97	6,595.00	578.40	-9,452.70	9,470.30	0.00	0.00	0.00	
15,800.00	90.00	269.97	6,595.00	578.35	-9,552.70	9,570.14	0.00	0.00	0.00	
15,900.00	90.00	269.97	6,595.00	578.29	-9,652.70	9,669.97	0.00	0.00	0.00	
16,000.00	90.00	269.97	6,595.00	578.24	-9,752.70	9,769.80	0.00	0.00	0.00	
16,100.00	90.00	269.97	6,595.00	578.18	-9,852.70	9,869.64	0.00	0.00	0.00	
16,200.00	90.00	269.97	6,595.00	578.13	-9,952.70	9,969.47	0.00	0.00	0.00	
16,300.00	90.00	269.97	6,595.00	578.07	-10,052.70	10,069.31	0.00	0.00	0.00	
16,368.88	90.00	269.97	6,595.00	578.04	-10,121.58	10,138.07	0.00	0.00	0.00	
PBHL/TD 16368.88 MD 6595.00 TVD										

Design Targets										
Target Name - hit/miss target - Shape	Dip Angle (°)	Dip Dir. (°)	TVD (ft)	+N/-S (ft)	+E/-W (ft)	Northing (usft)	Easting (usft)	Latitude		Longitude
Silverton 5-03-4L SL 264 - plan hits target center - Point	0.00	0.00	24.00	0.00	0.00	14,651,401.40	1,793,251.28	40.34105171		-104.45152433
Silverton 5-03-4L BHL 2: - plan hits target center - Point	0.00	0.00	6,595.00	578.04	-10,121.58	14,651,916.70	1,783,126.33	40.34263326		-104.48784748
Silverton 5-03-4L LP 22C - plan hits target center - Point	0.00	0.00	6,595.00	583.15	-715.27	14,651,980.10	1,792,532.41	40.34265297		-104.45409121

Plan Annotations					
Measured Depth (ft)	Vertical Depth (ft)	Local Coordinates			
		+N/-S (ft)	+E/-W (ft)	Comment	
2,000.00	2,000.00	0.00	0.00	KOP Begin 2°/100' build	
2,392.06	2,390.84	25.80	-7.20	Begin 7.84° tangent section	
6,083.56	6,047.82	510.87	-142.66	Begin 10°/100' build/turn	
6,962.57	6,595.00	583.15	-715.27	LP Begin 90° lateral	
16,368.88	6,595.00	578.04	-10,121.58	PBHL/TD 16368.88 MD 6595.00 TVD	