



Well: Silverton 5-05-2L
Site: Section 04-T04N-R63W
Project: Weld County, Colorado
Wellbore: Original Hole
Design: plan1

Section Details

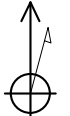
Sec	MD	Inc	Azi	TVD	+N/-S	+E/-W	Dleg	VSec	Annotation
1	0.00	0.00	0.00	0.00	0.00	0.00	0.00	0.00	
2	2000.00	0.00	0.00	2000.00	0.00	0.00	0.00	0.00	KOP Begin 2°/100' build
3	2935.91	18.72	353.51	2919.35	150.55	-17.12	2.00	36.38	Begin 18.72° tangent section
4	6053.02	18.72	353.51	5871.59	1144.47	-130.16	0.00	276.58	Begin 10°/100' build/turn
5	6932.34	90.00	269.97	6395.00	1320.38	-702.84	10.00	867.16	LP Begin 90° lateral
6	16349.22	90.00	269.97	6395.00	1315.24	-10119.72	0.00	10204.84	PBHL/TD 16349.22 MD 6395.00 TVD

DESIGN TARGET DETAILS

Name	TVD	+N/-S	+E/-W	Northing	Easting	Latitude	Longitude
Silverton 5-05-2L SL 2659 FNL 255 FWL	24.00	0.00	0.00	14651532.20	1793252.68	40.34141085	-104.45151640
Silverton 5-05-2L BHL 1338 FNL 470 FWL	6395.00	1315.24	-10119.72	14652784.70	1783125.02	40.34501675	-104.48783416
Silverton 5-05-2L LP 1338 FNL 470 FEL	6395.00	1320.38	-702.84	14652848.20	1792541.67	40.34503653	-104.45403876

Silverton 5-05-2L Surf loc: 2659 FNL 255 FWL Section 04-T04N-R63W			
NAD83 Colorado - HARN Universal Transverse Mercator (US Survey Feet) Zone 13N (108 W to 102 W) RKB=4628+24 @ 4652.00ft			
Northing 14651532.20	Easting 1793252.68	Latitude 40.34141085	Longitude -104.45151640

T M

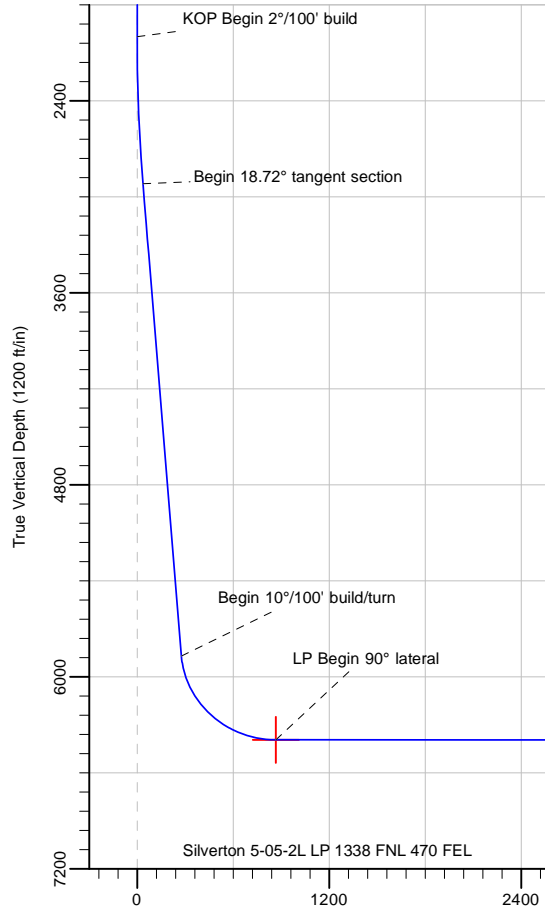
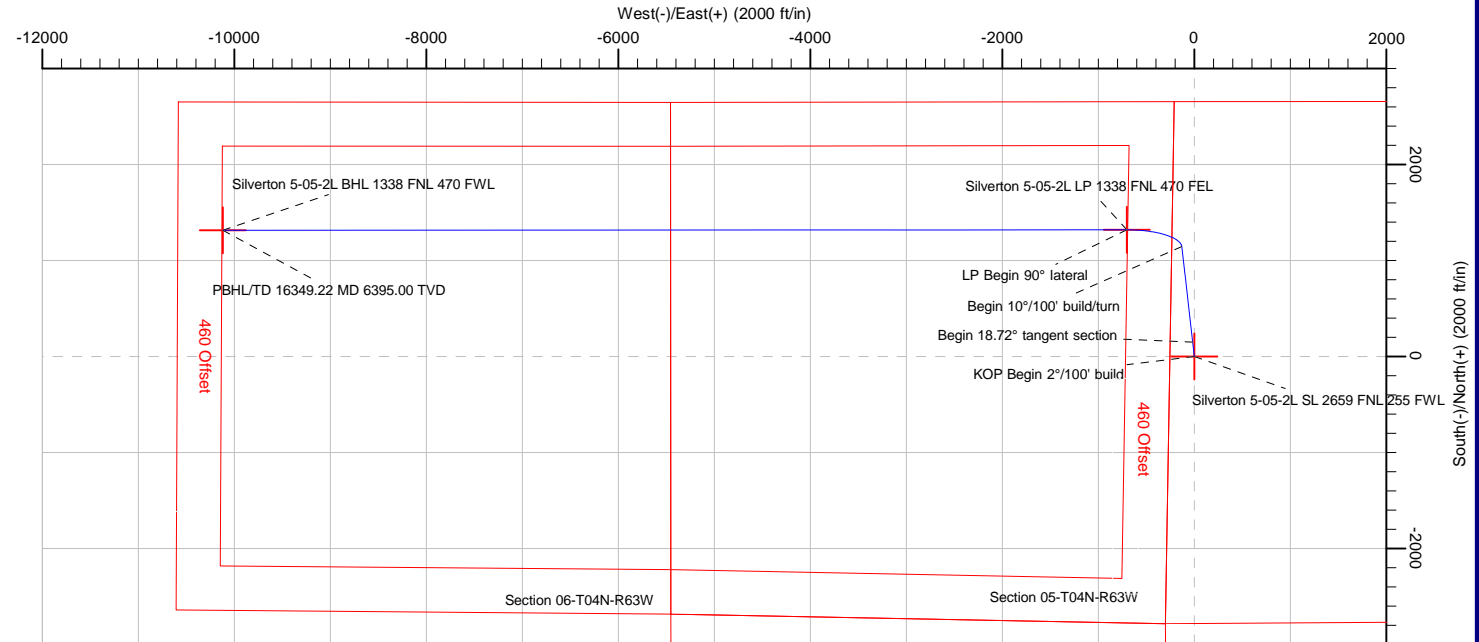


Azimuths to True North
Magnetic North: 8.08°

Magnetic Field
Strength: 52227.9snT
Dip Angle: 66.90°
Date: 5/29/2018
Model: HDGM



PRODIRECTIONAL



PBHL/TD 16349.22 MD 6395.00 TVD

Silverton 5-05-2L BHL 1338 FNL 470 FWL

Note: All lease lines and hard lines are estimates only and are subject to customers approval.

Database:	DB_Aug0116_LT_v14	Local Co-ordinate Reference:	Well Silverton 5-05-2L
Company:	Confluence Resources	TVD Reference:	RKB=4628+24 @ 4652.00ft
Project:	Weld County, Colorado	MD Reference:	RKB=4628+24 @ 4652.00ft
Site:	Section 04-T04N-R63W	North Reference:	True
Well:	Silverton 5-05-2L	Survey Calculation Method:	Minimum Curvature
Wellbore:	Original Hole		
Design:	plan1		

Project	Weld County, Colorado		
Map System:	Universal Transverse Mercator (US Survey Feet)	System Datum:	Mean Sea Level
Geo Datum:	NAD83 Colorado - HARN		
Map Zone:	Zone 13N (108 W to 102 W)		

Site		Section 04-T04N-R63W			
Site Position:		Northing:	14,650,073.90 usft	Latitude:	40.33740565
From:	Map	Easting:	1,793,302.13 usft	Longitude:	-104.45137138
Position Uncertainty:	0.00 ft	Slot Radius:	13-3/16 "	Grid Convergence:	0.36 °

Well	Silverton 5-05-2L, Surf loc: 2659 FNL 255 FWL Section 04-T04N-R63W					
Well Position	+N/-S	0.00 ft	Northing:	14,651,532.20 usft	Latitude:	40.34141085
	+E/-W	0.00 ft	Easting:	1,793,252.68 usft	Longitude:	-104.45151640
Position Uncertainty		0.00 ft	Wellhead Elevation:		Ground Level:	4,628.00 ft

Wellbore	Original Hole				
Magnetics	Model Name	Sample Date	Declination (°)	Dip Angle (°)	Field Strength (nT)
	HDGM	5/29/2018	8.08	66.90	52,227.90000000

Design	plan1			
Audit Notes:				
Version:	Phase:	PLAN	Tie On Depth:	0.00
Vertical Section:	Depth From (TVD) (ft)	+N/-S (ft)	+E/-W (ft)	Direction (°)
	0.00	0.00	0.00	277.41

Plan Survey Tool Program	Date	5/29/2018		
Depth From (ft)	Depth To (ft)	Survey (Wellbore)	Tool Name	Remarks
1	0.00	16,349.22 plan1 (Original Hole)		

Plan Sections										
Measured Depth (ft)	Inclination (°)	Azimuth (°)	Vertical Depth (ft)	+N/-S (ft)	+E/-W (ft)	Dogleg Rate (°/100ft)	Build Rate (°/100ft)	Turn Rate (°/100ft)	TFO (°)	Target
0.00	0.00	0.00	0.00	0.00	0.00	0.00	0.00	0.00	0.00	
2,000.00	0.00	0.00	2,000.00	0.00	0.00	0.00	0.00	0.00	0.00	
2,935.91	18.72	353.51	2,919.35	150.55	-17.12	2.00	2.00	0.00	353.51	
6,053.02	18.72	353.51	5,871.59	1,144.47	-130.16	0.00	0.00	0.00	0.00	
6,932.34	90.00	269.97	6,395.00	1,320.38	-702.84	10.00	8.11	-9.50	-83.88	Silverton 5-05-2L LP
16,349.22	90.00	269.97	6,395.00	1,315.24	-10,119.72	0.00	0.00	0.00	0.00	Silverton 5-05-2L BHL

Database:	DB_Aug0116_LT_v14	Local Co-ordinate Reference:	Well Silverton 5-05-2L
Company:	Confluence Resources	TVD Reference:	RKB=4628+24 @ 4652.00ft
Project:	Weld County, Colorado	MD Reference:	RKB=4628+24 @ 4652.00ft
Site:	Section 04-T04N-R63W	North Reference:	True
Well:	Silverton 5-05-2L	Survey Calculation Method:	Minimum Curvature
Wellbore:	Original Hole		
Design:	plan1		

Planned Survey									
Measured Depth (ft)	Inclination (°)	Azimuth (°)	Vertical Depth (ft)	+N/-S (ft)	+E/-W (ft)	Map Northing (usft)	Map Easting (usft)	Latitude	Longitude
0.00	0.00	0.00	0.00	0.00	0.00	14,651,532.20	1,793,252.68	40.34141085	-104.45151640
100.00	0.00	0.00	100.00	0.00	0.00	14,651,532.20	1,793,252.68	40.34141085	-104.45151640
200.00	0.00	0.00	200.00	0.00	0.00	14,651,532.20	1,793,252.68	40.34141085	-104.45151640
300.00	0.00	0.00	300.00	0.00	0.00	14,651,532.20	1,793,252.68	40.34141085	-104.45151640
400.00	0.00	0.00	400.00	0.00	0.00	14,651,532.20	1,793,252.68	40.34141085	-104.45151640
500.00	0.00	0.00	500.00	0.00	0.00	14,651,532.20	1,793,252.68	40.34141085	-104.45151640
600.00	0.00	0.00	600.00	0.00	0.00	14,651,532.20	1,793,252.68	40.34141085	-104.45151640
700.00	0.00	0.00	700.00	0.00	0.00	14,651,532.20	1,793,252.68	40.34141085	-104.45151640
800.00	0.00	0.00	800.00	0.00	0.00	14,651,532.20	1,793,252.68	40.34141085	-104.45151640
900.00	0.00	0.00	900.00	0.00	0.00	14,651,532.20	1,793,252.68	40.34141085	-104.45151640
1,000.00	0.00	0.00	1,000.00	0.00	0.00	14,651,532.20	1,793,252.68	40.34141085	-104.45151640
1,100.00	0.00	0.00	1,100.00	0.00	0.00	14,651,532.20	1,793,252.68	40.34141085	-104.45151640
1,200.00	0.00	0.00	1,200.00	0.00	0.00	14,651,532.20	1,793,252.68	40.34141085	-104.45151640
1,300.00	0.00	0.00	1,300.00	0.00	0.00	14,651,532.20	1,793,252.68	40.34141085	-104.45151640
1,400.00	0.00	0.00	1,400.00	0.00	0.00	14,651,532.20	1,793,252.68	40.34141085	-104.45151640
1,500.00	0.00	0.00	1,500.00	0.00	0.00	14,651,532.20	1,793,252.68	40.34141085	-104.45151640
1,600.00	0.00	0.00	1,600.00	0.00	0.00	14,651,532.20	1,793,252.68	40.34141085	-104.45151640
1,700.00	0.00	0.00	1,700.00	0.00	0.00	14,651,532.20	1,793,252.68	40.34141085	-104.45151640
1,800.00	0.00	0.00	1,800.00	0.00	0.00	14,651,532.20	1,793,252.68	40.34141085	-104.45151640
1,900.00	0.00	0.00	1,900.00	0.00	0.00	14,651,532.20	1,793,252.68	40.34141085	-104.45151640
2,000.00	0.00	0.00	2,000.00	0.00	0.00	14,651,532.20	1,793,252.68	40.34141085	-104.45151640
KOP Begin 2°/100' build									
2,100.00	2.00	353.51	2,099.98	1.73	-0.20	14,651,533.93	1,793,252.47	40.34141561	-104.45151711
2,200.00	4.00	353.51	2,199.84	6.93	-0.79	14,651,539.13	1,793,251.85	40.34142989	-104.45151923
2,300.00	6.00	353.51	2,299.45	15.59	-1.77	14,651,547.78	1,793,250.81	40.34145367	-104.45152277
2,400.00	8.00	353.51	2,398.70	27.70	-3.15	14,651,559.88	1,793,249.36	40.34148691	-104.45152771
2,500.00	10.00	353.51	2,497.47	43.24	-4.92	14,651,575.41	1,793,247.49	40.34152959	-104.45153405
2,600.00	12.00	353.51	2,595.62	62.20	-7.07	14,651,594.35	1,793,245.22	40.34158165	-104.45154179
2,700.00	14.00	353.51	2,693.06	84.55	-9.62	14,651,616.69	1,793,242.54	40.34164302	-104.45155091
2,800.00	16.00	353.51	2,789.64	110.27	-12.54	14,651,642.38	1,793,239.46	40.34171363	-104.45156140
2,900.00	18.00	353.51	2,885.27	139.31	-15.84	14,651,671.41	1,793,235.97	40.34179340	-104.45157326
2,935.91	18.72	353.51	2,919.35	150.55	-17.12	14,651,682.64	1,793,234.62	40.34182426	-104.45157785
Begin 18.72° tangent section									
3,000.00	18.72	353.51	2,980.05	170.99	-19.45	14,651,703.06	1,793,232.17	40.34188037	-104.45158619
3,100.00	18.72	353.51	3,074.76	202.87	-23.07	14,651,734.92	1,793,228.35	40.34196793	-104.45159920
3,200.00	18.72	353.51	3,169.47	234.76	-26.70	14,651,766.79	1,793,224.53	40.34205549	-104.45161222
3,300.00	18.72	353.51	3,264.18	266.65	-30.33	14,651,798.65	1,793,220.70	40.34214304	-104.45162523
3,400.00	18.72	353.51	3,358.89	298.53	-33.95	14,651,830.51	1,793,216.88	40.34223060	-104.45163824
3,500.00	18.72	353.51	3,453.60	330.42	-37.58	14,651,862.38	1,793,213.05	40.34231816	-104.45165126
3,600.00	18.72	353.51	3,548.32	362.30	-41.21	14,651,894.24	1,793,209.23	40.34240572	-104.45166427
3,700.00	18.72	353.51	3,643.03	394.19	-44.83	14,651,926.10	1,793,205.41	40.34249327	-104.45167729
3,800.00	18.72	353.51	3,737.74	426.08	-48.46	14,651,957.96	1,793,201.58	40.34258083	-104.45169030
3,900.00	18.72	353.51	3,832.45	457.96	-52.08	14,651,989.83	1,793,197.76	40.34266839	-104.45170332
4,000.00	18.72	353.51	3,927.16	489.85	-55.71	14,652,021.69	1,793,193.93	40.34275594	-104.45171633
4,100.00	18.72	353.51	4,021.87	521.73	-59.34	14,652,053.55	1,793,190.11	40.34284350	-104.45172934
4,200.00	18.72	353.51	4,116.58	553.62	-62.96	14,652,085.41	1,793,186.29	40.34293106	-104.45174236
4,300.00	18.72	353.51	4,211.29	585.51	-66.59	14,652,117.28	1,793,182.46	40.34301862	-104.45175537
4,400.00	18.72	353.51	4,306.00	617.39	-70.22	14,652,149.14	1,793,178.64	40.34310617	-104.45176839
4,500.00	18.72	353.51	4,400.71	649.28	-73.84	14,652,181.00	1,793,174.82	40.34319373	-104.45178140
4,600.00	18.72	353.51	4,495.42	681.16	-77.47	14,652,212.87	1,793,170.99	40.34328129	-104.45179442
4,700.00	18.72	353.51	4,590.13	713.05	-81.10	14,652,244.73	1,793,167.17	40.34336884	-104.45180743
4,800.00	18.72	353.51	4,684.85	744.93	-84.72	14,652,276.59	1,793,163.34	40.34345640	-104.45182044
4,900.00	18.72	353.51	4,779.56	776.82	-88.35	14,652,308.45	1,793,159.52	40.34354396	-104.45183346
5,000.00	18.72	353.51	4,874.27	808.71	-91.97	14,652,340.32	1,793,155.70	40.34363152	-104.45184647

Database:	DB_Aug0116_LT_v14	Local Co-ordinate Reference:	Well Silverton 5-05-2L
Company:	Confluence Resources	TVD Reference:	RKB=4628+24 @ 4652.00ft
Project:	Weld County, Colorado	MD Reference:	RKB=4628+24 @ 4652.00ft
Site:	Section 04-T04N-R63W	North Reference:	True
Well:	Silverton 5-05-2L	Survey Calculation Method:	Minimum Curvature
Wellbore:	Original Hole		
Design:	plan1		

Planned Survey									
Measured Depth (ft)	Inclination (°)	Azimuth (°)	Vertical Depth (ft)	+N/-S (ft)	+E/-W (ft)	Map Northing (usft)	Map Easting (usft)	Latitude	Longitude
5,100.00	18.72	353.51	4,968.98	840.59	-95.60	14,652,372.18	1,793,151.87	40.34371907	-104.45185949
5,200.00	18.72	353.51	5,063.69	872.48	-99.23	14,652,404.04	1,793,148.05	40.34380663	-104.45187250
5,300.00	18.72	353.51	5,158.40	904.36	-102.85	14,652,435.91	1,793,144.22	40.34389419	-104.45188552
5,400.00	18.72	353.51	5,253.11	936.25	-106.48	14,652,467.77	1,793,140.40	40.34398174	-104.45189853
5,500.00	18.72	353.51	5,347.82	968.14	-110.11	14,652,499.63	1,793,136.58	40.34406930	-104.45191155
5,600.00	18.72	353.51	5,442.53	1,000.02	-113.73	14,652,531.49	1,793,132.75	40.34415686	-104.45192456
5,700.00	18.72	353.51	5,537.24	1,031.91	-117.36	14,652,563.36	1,793,128.93	40.34424442	-104.45193758
5,800.00	18.72	353.51	5,631.95	1,063.79	-120.99	14,652,595.22	1,793,125.10	40.34433197	-104.45195059
5,900.00	18.72	353.51	5,726.66	1,095.68	-124.61	14,652,627.08	1,793,121.28	40.34441953	-104.45196361
6,000.00	18.72	353.51	5,821.38	1,127.57	-128.24	14,652,658.94	1,793,117.46	40.34450709	-104.45197662
6,053.02	18.72	353.51	5,871.59	1,144.47	-130.16	14,652,675.84	1,793,115.43	40.34455351	-104.45198352
Begin 10°/100' build/turn									
6,100.00	19.76	339.57	5,915.97	1,159.41	-133.79	14,652,690.76	1,793,111.71	40.34459453	-104.45199653
6,200.00	24.85	316.61	6,008.63	1,190.60	-154.17	14,652,721.82	1,793,091.13	40.34468017	-104.45206969
6,300.00	32.20	302.29	6,096.54	1,220.17	-191.22	14,652,751.16	1,793,053.90	40.34476139	-104.45220266
6,400.00	40.61	293.09	6,177.01	1,247.24	-243.82	14,652,777.90	1,793,001.14	40.34483571	-104.45239140
6,500.00	49.52	286.67	6,247.61	1,270.97	-310.35	14,652,801.22	1,792,934.46	40.34490087	-104.45263020
6,600.00	58.71	281.78	6,306.19	1,290.65	-388.81	14,652,820.41	1,792,855.88	40.34495491	-104.45291177
6,700.00	68.05	277.77	6,350.96	1,305.68	-476.81	14,652,834.90	1,792,767.79	40.34499617	-104.45322759
6,800.00	77.47	274.26	6,380.58	1,315.60	-571.68	14,652,844.23	1,792,672.86	40.34502340	-104.45356803
6,900.00	86.94	271.00	6,394.14	1,320.11	-670.52	14,652,848.12	1,792,573.99	40.34503578	-104.45392277
6,932.34	90.00	269.97	6,395.00	1,320.38	-702.84	14,652,848.20	1,792,541.67	40.34503653	-104.45403876
LP Begin 90° lateral									
7,000.00	90.00	269.97	6,395.00	1,320.35	-770.51	14,652,847.74	1,792,474.01	40.34503642	-104.45428159
7,100.00	90.00	269.97	6,395.00	1,320.29	-870.51	14,652,847.07	1,792,374.01	40.34503626	-104.45464047
7,200.00	90.00	269.97	6,395.00	1,320.24	-970.51	14,652,846.39	1,792,274.01	40.34503610	-104.45499936
7,300.00	90.00	269.97	6,395.00	1,320.18	-1,070.51	14,652,845.72	1,792,174.02	40.34503594	-104.45535824
7,400.00	90.00	269.97	6,395.00	1,320.13	-1,170.51	14,652,845.04	1,792,074.02	40.34503578	-104.45571712
7,500.00	90.00	269.97	6,395.00	1,320.07	-1,270.51	14,652,844.37	1,791,974.02	40.34503562	-104.45607600
7,600.00	90.00	269.97	6,395.00	1,320.02	-1,370.51	14,652,843.70	1,791,874.02	40.34503545	-104.45643488
7,700.00	90.00	269.97	6,395.00	1,319.96	-1,470.50	14,652,843.02	1,791,774.03	40.34503529	-104.45679376
7,800.00	90.00	269.97	6,395.00	1,319.91	-1,570.50	14,652,842.35	1,791,674.03	40.34503512	-104.45715264
7,900.00	90.00	269.97	6,395.00	1,319.86	-1,670.50	14,652,841.67	1,791,574.03	40.34503495	-104.45751152
8,000.00	90.00	269.97	6,395.00	1,319.80	-1,770.50	14,652,841.00	1,791,474.03	40.34503478	-104.45787040
8,100.00	90.00	269.97	6,395.00	1,319.75	-1,870.50	14,652,840.32	1,791,374.04	40.34503461	-104.45822928
8,200.00	90.00	269.97	6,395.00	1,319.69	-1,970.50	14,652,839.65	1,791,274.04	40.34503444	-104.45858816
8,300.00	90.00	269.97	6,395.00	1,319.64	-2,070.50	14,652,838.98	1,791,174.04	40.34503427	-104.45894704
8,400.00	90.00	269.97	6,395.00	1,319.58	-2,170.50	14,652,838.30	1,791,074.04	40.34503409	-104.45930592
8,500.00	90.00	269.97	6,395.00	1,319.53	-2,270.50	14,652,837.63	1,790,974.05	40.34503392	-104.45966480
8,600.00	90.00	269.97	6,395.00	1,319.47	-2,370.50	14,652,836.95	1,790,874.05	40.34503374	-104.46002368
8,700.00	90.00	269.97	6,395.00	1,319.42	-2,470.50	14,652,836.28	1,790,774.05	40.34503357	-104.46038256
8,800.00	90.00	269.97	6,395.00	1,319.36	-2,570.50	14,652,835.60	1,790,674.05	40.34503339	-104.46074144
8,900.00	90.00	269.97	6,395.00	1,319.31	-2,670.50	14,652,834.93	1,790,574.06	40.34503321	-104.46110033
9,000.00	90.00	269.97	6,395.00	1,319.26	-2,770.50	14,652,834.25	1,790,474.06	40.34503303	-104.46145921
9,100.00	90.00	269.97	6,395.00	1,319.20	-2,870.50	14,652,833.58	1,790,374.06	40.34503285	-104.46181809
9,200.00	90.00	269.97	6,395.00	1,319.15	-2,970.50	14,652,832.91	1,790,274.06	40.34503267	-104.46217697
9,300.00	90.00	269.97	6,395.00	1,319.09	-3,070.50	14,652,832.23	1,790,174.07	40.34503248	-104.46253585
9,400.00	90.00	269.97	6,395.00	1,319.04	-3,170.50	14,652,831.56	1,790,074.07	40.34503230	-104.46289473
9,500.00	90.00	269.97	6,395.00	1,318.98	-3,270.50	14,652,830.88	1,789,974.07	40.34503211	-104.46325361
9,600.00	90.00	269.97	6,395.00	1,318.93	-3,370.50	14,652,830.21	1,789,874.07	40.34503193	-104.46361249
9,700.00	90.00	269.97	6,395.00	1,318.87	-3,470.50	14,652,829.53	1,789,774.08	40.34503174	-104.46397137
9,800.00	90.00	269.97	6,395.00	1,318.82	-3,570.50	14,652,828.86	1,789,674.08	40.34503155	-104.46433025
9,900.00	90.00	269.97	6,395.00	1,318.76	-3,670.50	14,652,828.19	1,789,574.08	40.34503136	-104.46468913
10,000.00	90.00	269.97	6,395.00	1,318.71	-3,770.50	14,652,827.51	1,789,474.08	40.34503117	-104.46504801

Database:	DB_Aug0116_LT_v14	Local Co-ordinate Reference:	Well Silverton 5-05-2L
Company:	Confluence Resources	TVD Reference:	RKB=4628+24 @ 4652.00ft
Project:	Weld County, Colorado	MD Reference:	RKB=4628+24 @ 4652.00ft
Site:	Section 04-T04N-R63W	North Reference:	True
Well:	Silverton 5-05-2L	Survey Calculation Method:	Minimum Curvature
Wellbore:	Original Hole		
Design:	plan1		

Planned Survey									
Measured Depth (ft)	Inclination (°)	Azimuth (°)	Vertical Depth (ft)	+N/-S (ft)	+E/-W (ft)	Map Northing (usft)	Map Easting (usft)	Latitude	Longitude
10,100.00	90.00	269.97	6,395.00	1,318.65	-3,870.50	14,652,826.84	1,789,374.09	40.34503098	-104.46540689
10,200.00	90.00	269.97	6,395.00	1,318.60	-3,970.50	14,652,826.16	1,789,274.09	40.34503078	-104.46576578
10,300.00	90.00	269.97	6,395.00	1,318.55	-4,070.50	14,652,825.49	1,789,174.09	40.34503059	-104.46612466
10,400.00	90.00	269.97	6,395.00	1,318.49	-4,170.50	14,652,824.81	1,789,074.09	40.34503039	-104.46648354
10,500.00	90.00	269.97	6,395.00	1,318.44	-4,270.50	14,652,824.14	1,788,974.10	40.34503019	-104.46684242
10,600.00	90.00	269.97	6,395.00	1,318.38	-4,370.50	14,652,823.47	1,788,874.10	40.34503000	-104.46720130
10,700.00	90.00	269.97	6,395.00	1,318.33	-4,470.50	14,652,822.79	1,788,774.10	40.34502980	-104.46756018
10,800.00	90.00	269.97	6,395.00	1,318.27	-4,570.50	14,652,822.12	1,788,674.10	40.34502960	-104.46791906
10,900.00	90.00	269.97	6,395.00	1,318.22	-4,670.50	14,652,821.44	1,788,574.11	40.34502940	-104.46827794
11,000.00	90.00	269.97	6,395.00	1,318.16	-4,770.50	14,652,820.77	1,788,474.11	40.34502919	-104.46863682
11,100.00	90.00	269.97	6,395.00	1,318.11	-4,870.50	14,652,820.09	1,788,374.11	40.34502899	-104.46899570
11,200.00	90.00	269.97	6,395.00	1,318.05	-4,970.50	14,652,819.42	1,788,274.11	40.34502879	-104.46935458
11,300.00	90.00	269.97	6,395.00	1,318.00	-5,070.50	14,652,818.75	1,788,174.12	40.34502858	-104.46971347
11,400.00	90.00	269.97	6,395.00	1,317.94	-5,170.50	14,652,818.07	1,788,074.12	40.34502837	-104.47007235
11,500.00	90.00	269.97	6,395.00	1,317.89	-5,270.50	14,652,817.40	1,787,974.12	40.34502816	-104.47043123
11,600.00	90.00	269.97	6,395.00	1,317.84	-5,370.50	14,652,816.72	1,787,874.12	40.34502796	-104.47079011
11,700.00	90.00	269.97	6,395.00	1,317.78	-5,470.50	14,652,816.05	1,787,774.12	40.34502775	-104.47114899
11,800.00	90.00	269.97	6,395.00	1,317.73	-5,570.50	14,652,815.37	1,787,674.13	40.34502753	-104.47150787
11,900.00	90.00	269.97	6,395.00	1,317.67	-5,670.50	14,652,814.70	1,787,574.13	40.34502732	-104.47186675
12,000.00	90.00	269.97	6,395.00	1,317.62	-5,770.50	14,652,814.03	1,787,474.13	40.34502711	-104.47222563
12,100.00	90.00	269.97	6,395.00	1,317.56	-5,870.50	14,652,813.35	1,787,374.13	40.34502689	-104.47258451
12,200.00	90.00	269.97	6,395.00	1,317.51	-5,970.50	14,652,812.68	1,787,274.14	40.34502668	-104.47294339
12,300.00	90.00	269.97	6,395.00	1,317.45	-6,070.50	14,652,812.00	1,787,174.14	40.34502646	-104.47330228
12,400.00	90.00	269.97	6,395.00	1,317.40	-6,170.50	14,652,811.33	1,787,074.14	40.34502624	-104.47366116
12,500.00	90.00	269.97	6,395.00	1,317.34	-6,270.50	14,652,810.65	1,786,974.14	40.34502602	-104.47402004
12,600.00	90.00	269.97	6,395.00	1,317.29	-6,370.50	14,652,809.98	1,786,874.15	40.34502580	-104.47437892
12,700.00	90.00	269.97	6,395.00	1,317.24	-6,470.50	14,652,809.30	1,786,774.15	40.34502558	-104.47473780
12,800.00	90.00	269.97	6,395.00	1,317.18	-6,570.50	14,652,808.63	1,786,674.15	40.34502536	-104.47509668
12,900.00	90.00	269.97	6,395.00	1,317.13	-6,670.50	14,652,807.96	1,786,574.15	40.34502514	-104.47545556
13,000.00	90.00	269.97	6,395.00	1,317.07	-6,770.50	14,652,807.28	1,786,474.16	40.34502491	-104.47581444
13,100.00	90.00	269.97	6,395.00	1,317.02	-6,870.50	14,652,806.61	1,786,374.16	40.34502468	-104.47617332
13,200.00	90.00	269.97	6,395.00	1,316.96	-6,970.50	14,652,805.93	1,786,274.16	40.34502446	-104.47653221
13,300.00	90.00	269.97	6,395.00	1,316.91	-7,070.50	14,652,805.26	1,786,174.16	40.34502423	-104.47689109
13,400.00	90.00	269.97	6,395.00	1,316.85	-7,170.50	14,652,804.58	1,786,074.17	40.34502400	-104.47724997
13,500.00	90.00	269.97	6,395.00	1,316.80	-7,270.50	14,652,803.91	1,785,974.17	40.34502377	-104.47760885
13,600.00	90.00	269.97	6,395.00	1,316.74	-7,370.50	14,652,803.24	1,785,874.17	40.34502354	-104.47796773
13,700.00	90.00	269.97	6,395.00	1,316.69	-7,470.50	14,652,802.56	1,785,774.17	40.34502331	-104.47832661
13,800.00	90.00	269.97	6,395.00	1,316.63	-7,570.50	14,652,801.89	1,785,674.18	40.34502307	-104.47868549
13,900.00	90.00	269.97	6,395.00	1,316.58	-7,670.50	14,652,801.21	1,785,574.18	40.34502284	-104.47904437
14,000.00	90.00	269.97	6,395.00	1,316.53	-7,770.50	14,652,800.54	1,785,474.18	40.34502260	-104.47940325
14,100.00	90.00	269.97	6,395.00	1,316.47	-7,870.50	14,652,799.86	1,785,374.18	40.34502237	-104.47976214
14,200.00	90.00	269.97	6,395.00	1,316.42	-7,970.50	14,652,799.19	1,785,274.19	40.34502213	-104.48012102
14,300.00	90.00	269.97	6,395.00	1,316.36	-8,070.50	14,652,798.52	1,785,174.19	40.34502189	-104.48047990
14,400.00	90.00	269.97	6,395.00	1,316.31	-8,170.50	14,652,797.84	1,785,074.19	40.34502165	-104.48083878
14,500.00	90.00	269.97	6,395.00	1,316.25	-8,270.50	14,652,797.17	1,784,974.19	40.34502141	-104.48119766
14,600.00	90.00	269.97	6,395.00	1,316.20	-8,370.50	14,652,796.49	1,784,874.20	40.34502116	-104.48155654
14,700.00	90.00	269.97	6,395.00	1,316.14	-8,470.50	14,652,795.82	1,784,774.20	40.34502092	-104.48191542
14,800.00	90.00	269.97	6,395.00	1,316.09	-8,570.50	14,652,795.14	1,784,674.20	40.34502068	-104.48227430
14,900.00	90.00	269.97	6,395.00	1,316.03	-8,670.50	14,652,794.47	1,784,574.20	40.34502043	-104.48263319
15,000.00	90.00	269.97	6,395.00	1,315.98	-8,770.50	14,652,793.80	1,784,474.21	40.34502018	-104.48299207
15,100.00	90.00	269.97	6,395.00	1,315.93	-8,870.50	14,652,793.12	1,784,374.21	40.34501993	-104.48335095
15,200.00	90.00	269.97	6,395.00	1,315.87	-8,970.50	14,652,792.45	1,784,274.21	40.34501969	-104.48370983
15,300.00	90.00	269.97	6,395.00	1,315.82	-9,070.50	14,652,791.77	1,784,174.21	40.34501943	-104.48406871
15,400.00	90.00	269.97	6,395.00	1,315.76	-9,170.50	14,652,791.10	1,784,074.22	40.34501918	-104.48442758
15,500.00	90.00	269.97	6,395.00	1,315.71	-9,270.50	14,652,790.42	1,783,974.22	40.34501893	-104.48478646

Database:	DB_Aug0116_LT_v14	Local Co-ordinate Reference:	Well Silverton 5-05-2L
Company:	Confluence Resources	TVD Reference:	RKB=4628+24 @ 4652.00ft
Project:	Weld County, Colorado	MD Reference:	RKB=4628+24 @ 4652.00ft
Site:	Section 04-T04N-R63W	North Reference:	True
Well:	Silverton 5-05-2L	Survey Calculation Method:	Minimum Curvature
Wellbore:	Original Hole		
Design:	plan1		

Planned Survey									
Measured Depth (ft)	Inclination (°)	Azimuth (°)	Vertical Depth (ft)	+N/-S (ft)	+E/-W (ft)	Map Northing (usft)	Map Easting (usft)	Latitude	Longitude
15,600.00	90.00	269.97	6,395.00	1,315.65	-9,370.50	14,652,789.75	1,783,874.22	40.34501868	-104.48514534
15,700.00	90.00	269.97	6,395.00	1,315.60	-9,470.50	14,652,789.08	1,783,774.22	40.34501842	-104.48550423
15,800.00	90.00	269.97	6,395.00	1,315.54	-9,570.50	14,652,788.40	1,783,674.23	40.34501817	-104.48586311
15,900.00	90.00	269.97	6,395.00	1,315.49	-9,670.50	14,652,787.73	1,783,574.23	40.34501791	-104.48622199
16,000.00	90.00	269.97	6,395.00	1,315.43	-9,770.50	14,652,787.05	1,783,474.23	40.34501765	-104.48658087
16,100.00	90.00	269.97	6,395.00	1,315.38	-9,870.50	14,652,786.38	1,783,374.23	40.34501739	-104.48693975
16,200.00	90.00	269.97	6,395.00	1,315.32	-9,970.50	14,652,785.70	1,783,274.24	40.34501713	-104.48729863
16,300.00	90.00	269.97	6,395.00	1,315.27	-10,070.50	14,652,785.03	1,783,174.24	40.34501687	-104.48765751
16,349.22	90.00	269.97	6,395.00	1,315.24	-10,119.72	14,652,784.70	1,783,125.02	40.34501674	-104.48783416
PBHL/TD 16349.22 MD 6395.00 TVD									

Design Targets									
Target Name - hit/miss target - Shape	Dip Angle (°)	Dip Dir. (°)	TVD (ft)	+N/-S (ft)	+E/-W (ft)	Northing (usft)	Easting (usft)	Latitude	Longitude
Silverton 5-05-2L SL 26° - plan hits target center - Point	0.00	0.00	24.00	0.00	0.00	14,651,532.20	1,793,252.68	40.34141085	-104.45151640
Silverton 5-05-2L BHL 1° - plan hits target center - Point	0.00	0.00	6,395.00	1,315.24	-10,119.72	14,652,784.70	1,783,125.02	40.34501674	-104.48783416
Silverton 5-05-2L LP 13° - plan hits target center - Point	0.00	0.00	6,395.00	1,320.38	-702.84	14,652,848.20	1,792,541.67	40.34503653	-104.45403876

Plan Annotations				
Measured Depth (ft)	Vertical Depth (ft)	Local Coordinates		Comment
		+N/-S (ft)	+E/-W (ft)	
2,000.00	2,000.00	0.00	0.00	KOP Begin 2°/100' build
2,935.91	2,919.35	150.55	-17.12	Begin 18.72° tangent section
6,053.02	5,871.59	1,144.47	-130.16	Begin 10°/100' build/turn
6,932.34	6,395.00	1,320.38	-702.84	LP Begin 90° lateral
16,349.22	6,395.00	1,315.24	-10,119.72	PBHL/TD 16349.22 MD 6395.00 TVD

Database:	DB_Aug0116_LT_v14	Local Co-ordinate Reference:	Well Silverton 5-05-2L
Company:	Confluence Resources	TVD Reference:	RKB=4628+24 @ 4652.00ft
Project:	Weld County, Colorado	MD Reference:	RKB=4628+24 @ 4652.00ft
Site:	Section 04-T04N-R63W	North Reference:	True
Well:	Silverton 5-05-2L	Survey Calculation Method:	Minimum Curvature
Wellbore:	Original Hole		
Design:	plan1		

Project	Weld County, Colorado		
Map System:	Universal Transverse Mercator (US Survey Feet)	System Datum:	Mean Sea Level
Geo Datum:	NAD83 Colorado - HARN		
Map Zone:	Zone 13N (108 W to 102 W)		

Site		Section 04-T04N-R63W			
Site Position:		Northing:	14,650,073.90 usft	Latitude:	40.33740565
From:	Map	Easting:	1,793,302.13 usft	Longitude:	-104.45137138
Position Uncertainty:	0.00 ft	Slot Radius:	13-3/16 "	Grid Convergence:	0.36 °

Well	Silverton 5-05-2L, Surf loc: 2659 FNL 255 FWL Section 04-T04N-R63W					
Well Position	+N/-S	1,458.58 ft	Northing:	14,651,532.20 usft	Latitude:	40.34141085
	+E/-W	-40.41 ft	Easting:	1,793,252.68 usft	Longitude:	-104.45151640
Position Uncertainty		0.00 ft	Wellhead Elevation:		Ground Level:	4,628.00 ft

Wellbore	Original Hole				
Magnetics	Model Name	Sample Date	Declination (°)	Dip Angle (°)	Field Strength (nT)
	HDGM	5/29/2018	8.08	66.90	52,227.90000000

Design	plan1			
Audit Notes:				
Version:	Phase:	PLAN	Tie On Depth:	0.00
Vertical Section:	Depth From (TVD) (ft)	+N/-S (ft)	+E/-W (ft)	Direction (°)
	0.00	0.00	0.00	277.41

Plan Survey Tool Program	Date	5/29/2018		
Depth From (ft)	Depth To (ft)	Survey (Wellbore)	Tool Name	Remarks
1	0.00	16,349.22	plan1 (Original Hole)	

Plan Sections										
Measured Depth (ft)	Inclination (°)	Azimuth (°)	Vertical Depth (ft)	+N/-S (ft)	+E/-W (ft)	Dogleg Rate (°/100ft)	Build Rate (°/100ft)	Turn Rate (°/100ft)	TFO (°)	Target
0.00	0.00	0.00	0.00	0.00	0.00	0.00	0.00	0.00	0.00	
2,000.00	0.00	0.00	2,000.00	0.00	0.00	0.00	0.00	0.00	0.00	
2,935.91	18.72	353.51	2,919.35	150.55	-17.12	2.00	2.00	0.00	353.51	
6,053.02	18.72	353.51	5,871.59	1,144.47	-130.16	0.00	0.00	0.00	0.00	
6,932.34	90.00	269.97	6,395.00	1,320.38	-702.84	10.00	8.11	-9.50	-83.88	Silverton 5-05-2L LP
16,349.22	90.00	269.97	6,395.00	1,315.24	-10,119.72	0.00	0.00	0.00	0.00	Silverton 5-05-2L BHL

Database:	DB_Aug0116_LT_v14	Local Co-ordinate Reference:	Well Silverton 5-05-2L
Company:	Confluence Resources	TVD Reference:	RKB=4628+24 @ 4652.00ft
Project:	Weld County, Colorado	MD Reference:	RKB=4628+24 @ 4652.00ft
Site:	Section 04-T04N-R63W	North Reference:	True
Well:	Silverton 5-05-2L	Survey Calculation Method:	Minimum Curvature
Wellbore:	Original Hole		
Design:	plan1		

Planned Survey									
Measured Depth (ft)	Inclination (°)	Azimuth (°)	Vertical Depth (ft)	+N/-S (ft)	+E/-W (ft)	Vertical Section (ft)	Dogleg Rate (°/100ft)	Build Rate (°/100ft)	Turn Rate (°/100ft)
0.00	0.00	0.00	0.00	0.00	0.00	0.00	0.00	0.00	0.00
100.00	0.00	0.00	100.00	0.00	0.00	0.00	0.00	0.00	0.00
200.00	0.00	0.00	200.00	0.00	0.00	0.00	0.00	0.00	0.00
300.00	0.00	0.00	300.00	0.00	0.00	0.00	0.00	0.00	0.00
400.00	0.00	0.00	400.00	0.00	0.00	0.00	0.00	0.00	0.00
500.00	0.00	0.00	500.00	0.00	0.00	0.00	0.00	0.00	0.00
600.00	0.00	0.00	600.00	0.00	0.00	0.00	0.00	0.00	0.00
700.00	0.00	0.00	700.00	0.00	0.00	0.00	0.00	0.00	0.00
800.00	0.00	0.00	800.00	0.00	0.00	0.00	0.00	0.00	0.00
900.00	0.00	0.00	900.00	0.00	0.00	0.00	0.00	0.00	0.00
1,000.00	0.00	0.00	1,000.00	0.00	0.00	0.00	0.00	0.00	0.00
1,100.00	0.00	0.00	1,100.00	0.00	0.00	0.00	0.00	0.00	0.00
1,200.00	0.00	0.00	1,200.00	0.00	0.00	0.00	0.00	0.00	0.00
1,300.00	0.00	0.00	1,300.00	0.00	0.00	0.00	0.00	0.00	0.00
1,400.00	0.00	0.00	1,400.00	0.00	0.00	0.00	0.00	0.00	0.00
1,500.00	0.00	0.00	1,500.00	0.00	0.00	0.00	0.00	0.00	0.00
1,600.00	0.00	0.00	1,600.00	0.00	0.00	0.00	0.00	0.00	0.00
1,700.00	0.00	0.00	1,700.00	0.00	0.00	0.00	0.00	0.00	0.00
1,800.00	0.00	0.00	1,800.00	0.00	0.00	0.00	0.00	0.00	0.00
1,900.00	0.00	0.00	1,900.00	0.00	0.00	0.00	0.00	0.00	0.00
2,000.00	0.00	0.00	2,000.00	0.00	0.00	0.00	0.00	0.00	0.00
KOP Begin 2°/100' build									
2,100.00	2.00	353.51	2,099.98	1.73	-0.20	0.42	2.00	2.00	0.00
2,200.00	4.00	353.51	2,199.84	6.93	-0.79	1.68	2.00	2.00	0.00
2,300.00	6.00	353.51	2,299.45	15.59	-1.77	3.77	2.00	2.00	0.00
2,400.00	8.00	353.51	2,398.70	27.70	-3.15	6.69	2.00	2.00	0.00
2,500.00	10.00	353.51	2,497.47	43.24	-4.92	10.45	2.00	2.00	0.00
2,600.00	12.00	353.51	2,595.62	62.20	-7.07	15.03	2.00	2.00	0.00
2,700.00	14.00	353.51	2,693.06	84.55	-9.62	20.43	2.00	2.00	0.00
2,800.00	16.00	353.51	2,789.64	110.27	-12.54	26.65	2.00	2.00	0.00
2,900.00	18.00	353.51	2,885.27	139.31	-15.84	33.67	2.00	2.00	0.00
2,935.91	18.72	353.51	2,919.35	150.55	-17.12	36.38	2.00	2.00	0.00
Begin 18.72° tangent section									
3,000.00	18.72	353.51	2,980.05	170.99	-19.45	41.32	0.00	0.00	0.00
3,100.00	18.72	353.51	3,074.76	202.87	-23.07	49.03	0.00	0.00	0.00
3,200.00	18.72	353.51	3,169.47	234.76	-26.70	56.73	0.00	0.00	0.00
3,300.00	18.72	353.51	3,264.18	266.65	-30.33	64.44	0.00	0.00	0.00
3,400.00	18.72	353.51	3,358.89	298.53	-33.95	72.15	0.00	0.00	0.00
3,500.00	18.72	353.51	3,453.60	330.42	-37.58	79.85	0.00	0.00	0.00
3,600.00	18.72	353.51	3,548.32	362.30	-41.21	87.56	0.00	0.00	0.00
3,700.00	18.72	353.51	3,643.03	394.19	-44.83	95.26	0.00	0.00	0.00
3,800.00	18.72	353.51	3,737.74	426.08	-48.46	102.97	0.00	0.00	0.00
3,900.00	18.72	353.51	3,832.45	457.96	-52.08	110.67	0.00	0.00	0.00
4,000.00	18.72	353.51	3,927.16	489.85	-55.71	118.38	0.00	0.00	0.00
4,100.00	18.72	353.51	4,021.87	521.73	-59.34	126.09	0.00	0.00	0.00
4,200.00	18.72	353.51	4,116.58	553.62	-62.96	133.79	0.00	0.00	0.00
4,300.00	18.72	353.51	4,211.29	585.51	-66.59	141.50	0.00	0.00	0.00
4,400.00	18.72	353.51	4,306.00	617.39	-70.22	149.20	0.00	0.00	0.00
4,500.00	18.72	353.51	4,400.71	649.28	-73.84	156.91	0.00	0.00	0.00
4,600.00	18.72	353.51	4,495.42	681.16	-77.47	164.61	0.00	0.00	0.00
4,700.00	18.72	353.51	4,590.13	713.05	-81.10	172.32	0.00	0.00	0.00
4,800.00	18.72	353.51	4,684.85	744.93	-84.72	180.03	0.00	0.00	0.00
4,900.00	18.72	353.51	4,779.56	776.82	-88.35	187.73	0.00	0.00	0.00

Database:	DB_Aug0116_LT_v14	Local Co-ordinate Reference:	Well Silverton 5-05-2L
Company:	Confluence Resources	TVD Reference:	RKB=4628+24 @ 4652.00ft
Project:	Weld County, Colorado	MD Reference:	RKB=4628+24 @ 4652.00ft
Site:	Section 04-T04N-R63W	North Reference:	True
Well:	Silverton 5-05-2L	Survey Calculation Method:	Minimum Curvature
Wellbore:	Original Hole		
Design:	plan1		

Planned Survey									
Measured Depth (ft)	Inclination (°)	Azimuth (°)	Vertical Depth (ft)	+N/-S (ft)	+E/-W (ft)	Vertical Section (ft)	Dogleg Rate (°/100ft)	Build Rate (°/100ft)	Turn Rate (°/100ft)
5,000.00	18.72	353.51	4,874.27	808.71	-91.97	195.44	0.00	0.00	0.00
5,100.00	18.72	353.51	4,968.98	840.59	-95.60	203.14	0.00	0.00	0.00
5,200.00	18.72	353.51	5,063.69	872.48	-99.23	210.85	0.00	0.00	0.00
5,300.00	18.72	353.51	5,158.40	904.36	-102.85	218.55	0.00	0.00	0.00
5,400.00	18.72	353.51	5,253.11	936.25	-106.48	226.26	0.00	0.00	0.00
5,500.00	18.72	353.51	5,347.82	968.14	-110.11	233.97	0.00	0.00	0.00
5,600.00	18.72	353.51	5,442.53	1,000.02	-113.73	241.67	0.00	0.00	0.00
5,700.00	18.72	353.51	5,537.24	1,031.91	-117.36	249.38	0.00	0.00	0.00
5,800.00	18.72	353.51	5,631.95	1,063.79	-120.99	257.08	0.00	0.00	0.00
5,900.00	18.72	353.51	5,726.66	1,095.68	-124.61	264.79	0.00	0.00	0.00
6,000.00	18.72	353.51	5,821.38	1,127.57	-128.24	272.49	0.00	0.00	0.00
6,053.02	18.72	353.51	5,871.59	1,144.47	-130.16	276.58	0.00	0.00	0.00
Begin 10°/100' build/turn									
6,100.00	19.76	339.57	5,915.97	1,159.41	-133.79	282.10	10.00	2.21	-29.67
6,200.00	24.85	316.61	6,008.63	1,190.60	-154.17	306.33	10.00	5.09	-22.96
6,300.00	32.20	302.29	6,096.54	1,220.17	-191.22	346.89	10.00	7.36	-14.33
6,400.00	40.61	293.09	6,177.01	1,247.24	-243.82	402.53	10.00	8.40	-9.19
6,500.00	49.52	286.67	6,247.61	1,270.97	-310.35	471.57	10.00	8.92	-6.43
6,600.00	58.71	281.78	6,306.19	1,290.65	-388.81	551.92	10.00	9.19	-4.89
6,700.00	68.05	277.77	6,350.96	1,305.68	-476.81	641.12	10.00	9.34	-4.01
6,800.00	77.47	274.26	6,380.58	1,315.60	-571.68	736.47	10.00	9.42	-3.51
6,900.00	86.94	271.00	6,394.14	1,320.11	-670.52	835.07	10.00	9.47	-3.26
6,932.34	90.00	269.97	6,395.00	1,320.38	-702.84	867.16	10.00	9.48	-3.19
LP Begin 90° lateral									
7,000.00	90.00	269.97	6,395.00	1,320.35	-770.51	934.25	0.00	0.00	0.00
7,100.00	90.00	269.97	6,395.00	1,320.29	-870.51	1,033.41	0.00	0.00	0.00
7,200.00	90.00	269.97	6,395.00	1,320.24	-970.51	1,132.57	0.00	0.00	0.00
7,300.00	90.00	269.97	6,395.00	1,320.18	-1,070.51	1,231.73	0.00	0.00	0.00
7,400.00	90.00	269.97	6,395.00	1,320.13	-1,170.51	1,330.89	0.00	0.00	0.00
7,500.00	90.00	269.97	6,395.00	1,320.07	-1,270.51	1,430.05	0.00	0.00	0.00
7,600.00	90.00	269.97	6,395.00	1,320.02	-1,370.51	1,529.20	0.00	0.00	0.00
7,700.00	90.00	269.97	6,395.00	1,319.96	-1,470.50	1,628.36	0.00	0.00	0.00
7,800.00	90.00	269.97	6,395.00	1,319.91	-1,570.50	1,727.52	0.00	0.00	0.00
7,900.00	90.00	269.97	6,395.00	1,319.86	-1,670.50	1,826.68	0.00	0.00	0.00
8,000.00	90.00	269.97	6,395.00	1,319.80	-1,770.50	1,925.84	0.00	0.00	0.00
8,100.00	90.00	269.97	6,395.00	1,319.75	-1,870.50	2,025.00	0.00	0.00	0.00
8,200.00	90.00	269.97	6,395.00	1,319.69	-1,970.50	2,124.16	0.00	0.00	0.00
8,300.00	90.00	269.97	6,395.00	1,319.64	-2,070.50	2,223.32	0.00	0.00	0.00
8,400.00	90.00	269.97	6,395.00	1,319.58	-2,170.50	2,322.48	0.00	0.00	0.00
8,500.00	90.00	269.97	6,395.00	1,319.53	-2,270.50	2,421.63	0.00	0.00	0.00
8,600.00	90.00	269.97	6,395.00	1,319.47	-2,370.50	2,520.79	0.00	0.00	0.00
8,700.00	90.00	269.97	6,395.00	1,319.42	-2,470.50	2,619.95	0.00	0.00	0.00
8,800.00	90.00	269.97	6,395.00	1,319.36	-2,570.50	2,719.11	0.00	0.00	0.00
8,900.00	90.00	269.97	6,395.00	1,319.31	-2,670.50	2,818.27	0.00	0.00	0.00
9,000.00	90.00	269.97	6,395.00	1,319.26	-2,770.50	2,917.43	0.00	0.00	0.00
9,100.00	90.00	269.97	6,395.00	1,319.20	-2,870.50	3,016.59	0.00	0.00	0.00
9,200.00	90.00	269.97	6,395.00	1,319.15	-2,970.50	3,115.75	0.00	0.00	0.00
9,300.00	90.00	269.97	6,395.00	1,319.09	-3,070.50	3,214.91	0.00	0.00	0.00
9,400.00	90.00	269.97	6,395.00	1,319.04	-3,170.50	3,314.06	0.00	0.00	0.00
9,500.00	90.00	269.97	6,395.00	1,318.98	-3,270.50	3,413.22	0.00	0.00	0.00
9,600.00	90.00	269.97	6,395.00	1,318.93	-3,370.50	3,512.38	0.00	0.00	0.00
9,700.00	90.00	269.97	6,395.00	1,318.87	-3,470.50	3,611.54	0.00	0.00	0.00
9,800.00	90.00	269.97	6,395.00	1,318.82	-3,570.50	3,710.70	0.00	0.00	0.00
9,900.00	90.00	269.97	6,395.00	1,318.76	-3,670.50	3,809.86	0.00	0.00	0.00

Database:	DB_Aug0116_LT_v14	Local Co-ordinate Reference:	Well Silverton 5-05-2L
Company:	Confluence Resources	TVD Reference:	RKB=4628+24 @ 4652.00ft
Project:	Weld County, Colorado	MD Reference:	RKB=4628+24 @ 4652.00ft
Site:	Section 04-T04N-R63W	North Reference:	True
Well:	Silverton 5-05-2L	Survey Calculation Method:	Minimum Curvature
Wellbore:	Original Hole		
Design:	plan1		

Planned Survey									
Measured Depth (ft)	Inclination (°)	Azimuth (°)	Vertical Depth (ft)	+N/-S (ft)	+E/-W (ft)	Vertical Section (ft)	Dogleg Rate (°/100ft)	Build Rate (°/100ft)	Turn Rate (°/100ft)
10,000.00	90.00	269.97	6,395.00	1,318.71	-3,770.50	3,909.02	0.00	0.00	0.00
10,100.00	90.00	269.97	6,395.00	1,318.65	-3,870.50	4,008.18	0.00	0.00	0.00
10,200.00	90.00	269.97	6,395.00	1,318.60	-3,970.50	4,107.34	0.00	0.00	0.00
10,300.00	90.00	269.97	6,395.00	1,318.55	-4,070.50	4,206.49	0.00	0.00	0.00
10,400.00	90.00	269.97	6,395.00	1,318.49	-4,170.50	4,305.65	0.00	0.00	0.00
10,500.00	90.00	269.97	6,395.00	1,318.44	-4,270.50	4,404.81	0.00	0.00	0.00
10,600.00	90.00	269.97	6,395.00	1,318.38	-4,370.50	4,503.97	0.00	0.00	0.00
10,700.00	90.00	269.97	6,395.00	1,318.33	-4,470.50	4,603.13	0.00	0.00	0.00
10,800.00	90.00	269.97	6,395.00	1,318.27	-4,570.50	4,702.29	0.00	0.00	0.00
10,900.00	90.00	269.97	6,395.00	1,318.22	-4,670.50	4,801.45	0.00	0.00	0.00
11,000.00	90.00	269.97	6,395.00	1,318.16	-4,770.50	4,900.61	0.00	0.00	0.00
11,100.00	90.00	269.97	6,395.00	1,318.11	-4,870.50	4,999.77	0.00	0.00	0.00
11,200.00	90.00	269.97	6,395.00	1,318.05	-4,970.50	5,098.93	0.00	0.00	0.00
11,300.00	90.00	269.97	6,395.00	1,318.00	-5,070.50	5,198.08	0.00	0.00	0.00
11,400.00	90.00	269.97	6,395.00	1,317.94	-5,170.50	5,297.24	0.00	0.00	0.00
11,500.00	90.00	269.97	6,395.00	1,317.89	-5,270.50	5,396.40	0.00	0.00	0.00
11,600.00	90.00	269.97	6,395.00	1,317.84	-5,370.50	5,495.56	0.00	0.00	0.00
11,700.00	90.00	269.97	6,395.00	1,317.78	-5,470.50	5,594.72	0.00	0.00	0.00
11,800.00	90.00	269.97	6,395.00	1,317.73	-5,570.50	5,693.88	0.00	0.00	0.00
11,900.00	90.00	269.97	6,395.00	1,317.67	-5,670.50	5,793.04	0.00	0.00	0.00
12,000.00	90.00	269.97	6,395.00	1,317.62	-5,770.50	5,892.20	0.00	0.00	0.00
12,100.00	90.00	269.97	6,395.00	1,317.56	-5,870.50	5,991.36	0.00	0.00	0.00
12,200.00	90.00	269.97	6,395.00	1,317.51	-5,970.50	6,090.51	0.00	0.00	0.00
12,300.00	90.00	269.97	6,395.00	1,317.45	-6,070.50	6,189.67	0.00	0.00	0.00
12,400.00	90.00	269.97	6,395.00	1,317.40	-6,170.50	6,288.83	0.00	0.00	0.00
12,500.00	90.00	269.97	6,395.00	1,317.34	-6,270.50	6,387.99	0.00	0.00	0.00
12,600.00	90.00	269.97	6,395.00	1,317.29	-6,370.50	6,487.15	0.00	0.00	0.00
12,700.00	90.00	269.97	6,395.00	1,317.24	-6,470.50	6,586.31	0.00	0.00	0.00
12,800.00	90.00	269.97	6,395.00	1,317.18	-6,570.50	6,685.47	0.00	0.00	0.00
12,900.00	90.00	269.97	6,395.00	1,317.13	-6,670.50	6,784.63	0.00	0.00	0.00
13,000.00	90.00	269.97	6,395.00	1,317.07	-6,770.50	6,883.79	0.00	0.00	0.00
13,100.00	90.00	269.97	6,395.00	1,317.02	-6,870.50	6,982.94	0.00	0.00	0.00
13,200.00	90.00	269.97	6,395.00	1,316.96	-6,970.50	7,082.10	0.00	0.00	0.00
13,300.00	90.00	269.97	6,395.00	1,316.91	-7,070.50	7,181.26	0.00	0.00	0.00
13,400.00	90.00	269.97	6,395.00	1,316.85	-7,170.50	7,280.42	0.00	0.00	0.00
13,500.00	90.00	269.97	6,395.00	1,316.80	-7,270.50	7,379.58	0.00	0.00	0.00
13,600.00	90.00	269.97	6,395.00	1,316.74	-7,370.50	7,478.74	0.00	0.00	0.00
13,700.00	90.00	269.97	6,395.00	1,316.69	-7,470.50	7,577.90	0.00	0.00	0.00
13,800.00	90.00	269.97	6,395.00	1,316.63	-7,570.50	7,677.06	0.00	0.00	0.00
13,900.00	90.00	269.97	6,395.00	1,316.58	-7,670.50	7,776.22	0.00	0.00	0.00
14,000.00	90.00	269.97	6,395.00	1,316.53	-7,770.50	7,875.37	0.00	0.00	0.00
14,100.00	90.00	269.97	6,395.00	1,316.47	-7,870.50	7,974.53	0.00	0.00	0.00
14,200.00	90.00	269.97	6,395.00	1,316.42	-7,970.50	8,073.69	0.00	0.00	0.00
14,300.00	90.00	269.97	6,395.00	1,316.36	-8,070.50	8,172.85	0.00	0.00	0.00
14,400.00	90.00	269.97	6,395.00	1,316.31	-8,170.50	8,272.01	0.00	0.00	0.00
14,500.00	90.00	269.97	6,395.00	1,316.25	-8,270.50	8,371.17	0.00	0.00	0.00
14,600.00	90.00	269.97	6,395.00	1,316.20	-8,370.50	8,470.33	0.00	0.00	0.00
14,700.00	90.00	269.97	6,395.00	1,316.14	-8,470.50	8,569.49	0.00	0.00	0.00
14,800.00	90.00	269.97	6,395.00	1,316.09	-8,570.50	8,668.65	0.00	0.00	0.00
14,900.00	90.00	269.97	6,395.00	1,316.03	-8,670.50	8,767.81	0.00	0.00	0.00
15,000.00	90.00	269.97	6,395.00	1,315.98	-8,770.50	8,866.96	0.00	0.00	0.00
15,100.00	90.00	269.97	6,395.00	1,315.93	-8,870.50	8,966.12	0.00	0.00	0.00
15,200.00	90.00	269.97	6,395.00	1,315.87	-8,970.50	9,065.28	0.00	0.00	0.00
15,300.00	90.00	269.97	6,395.00	1,315.82	-9,070.50	9,164.44	0.00	0.00	0.00

Database:	DB_Aug0116_LT_v14	Local Co-ordinate Reference:	Well Silverton 5-05-2L
Company:	Confluence Resources	TVD Reference:	RKB=4628+24 @ 4652.00ft
Project:	Weld County, Colorado	MD Reference:	RKB=4628+24 @ 4652.00ft
Site:	Section 04-T04N-R63W	North Reference:	True
Well:	Silverton 5-05-2L	Survey Calculation Method:	Minimum Curvature
Wellbore:	Original Hole		
Design:	plan1		

Planned Survey										
Measured Depth (ft)	Inclination (°)	Azimuth (°)	Vertical Depth (ft)	+N/-S (ft)	+E/-W (ft)	Vertical Section (ft)	Dogleg Rate (°/100ft)	Build Rate (°/100ft)	Turn Rate (°/100ft)	
15,400.00	90.00	269.97	6,395.00	1,315.76	-9,170.50	9,263.60	0.00	0.00	0.00	
15,500.00	90.00	269.97	6,395.00	1,315.71	-9,270.50	9,362.76	0.00	0.00	0.00	
15,600.00	90.00	269.97	6,395.00	1,315.65	-9,370.50	9,461.92	0.00	0.00	0.00	
15,700.00	90.00	269.97	6,395.00	1,315.60	-9,470.50	9,561.08	0.00	0.00	0.00	
15,800.00	90.00	269.97	6,395.00	1,315.54	-9,570.50	9,660.24	0.00	0.00	0.00	
15,900.00	90.00	269.97	6,395.00	1,315.49	-9,670.50	9,759.39	0.00	0.00	0.00	
16,000.00	90.00	269.97	6,395.00	1,315.43	-9,770.50	9,858.55	0.00	0.00	0.00	
16,100.00	90.00	269.97	6,395.00	1,315.38	-9,870.50	9,957.71	0.00	0.00	0.00	
16,200.00	90.00	269.97	6,395.00	1,315.32	-9,970.50	10,056.87	0.00	0.00	0.00	
16,300.00	90.00	269.97	6,395.00	1,315.27	-10,070.50	10,156.03	0.00	0.00	0.00	
16,349.22	90.00	269.97	6,395.00	1,315.24	-10,119.72	10,204.84	0.00	0.00	0.00	
PBHL/TD 16349.22 MD 6395.00 TVD										

Design Targets										
Target Name - hit/miss target - Shape	Dip Angle (°)	Dip Dir. (°)	TVD (ft)	+N/-S (ft)	+E/-W (ft)	Northing (usft)	Easting (usft)	Latitude Longitude		
Silverton 5-05-2L SL 26ft - plan hits target center - Point	0.00	0.00	24.00	0.00	0.00	14,651,532.20	1,793,252.68	40.34141085 -104.45151640		
Silverton 5-05-2L BHL 1: - plan hits target center - Point	0.00	0.00	6,395.00	1,315.24	-10,119.72	14,652,784.70	1,783,125.02	40.34501674 -104.48783416		
Silverton 5-05-2L LP 13ft - plan hits target center - Point	0.00	0.00	6,395.00	1,320.38	-702.84	14,652,848.20	1,792,541.67	40.34503653 -104.45403876		

Plan Annotations					
Measured Depth (ft)	Vertical Depth (ft)	Local Coordinates			
		+N/-S (ft)	+E/-W (ft)	Comment	
2,000.00	2,000.00	0.00	0.00	KOP Begin 2°/100' build	
2,935.91	2,919.35	150.55	-17.12	Begin 18.72° tangent section	
6,053.02	5,871.59	1,144.47	-130.16	Begin 10°/100' build/turn	
6,932.34	6,395.00	1,320.38	-702.84	LP Begin 90° lateral	
16,349.22	6,395.00	1,315.24	-10,119.72	PBHL/TD 16349.22 MD 6395.00 TVD	