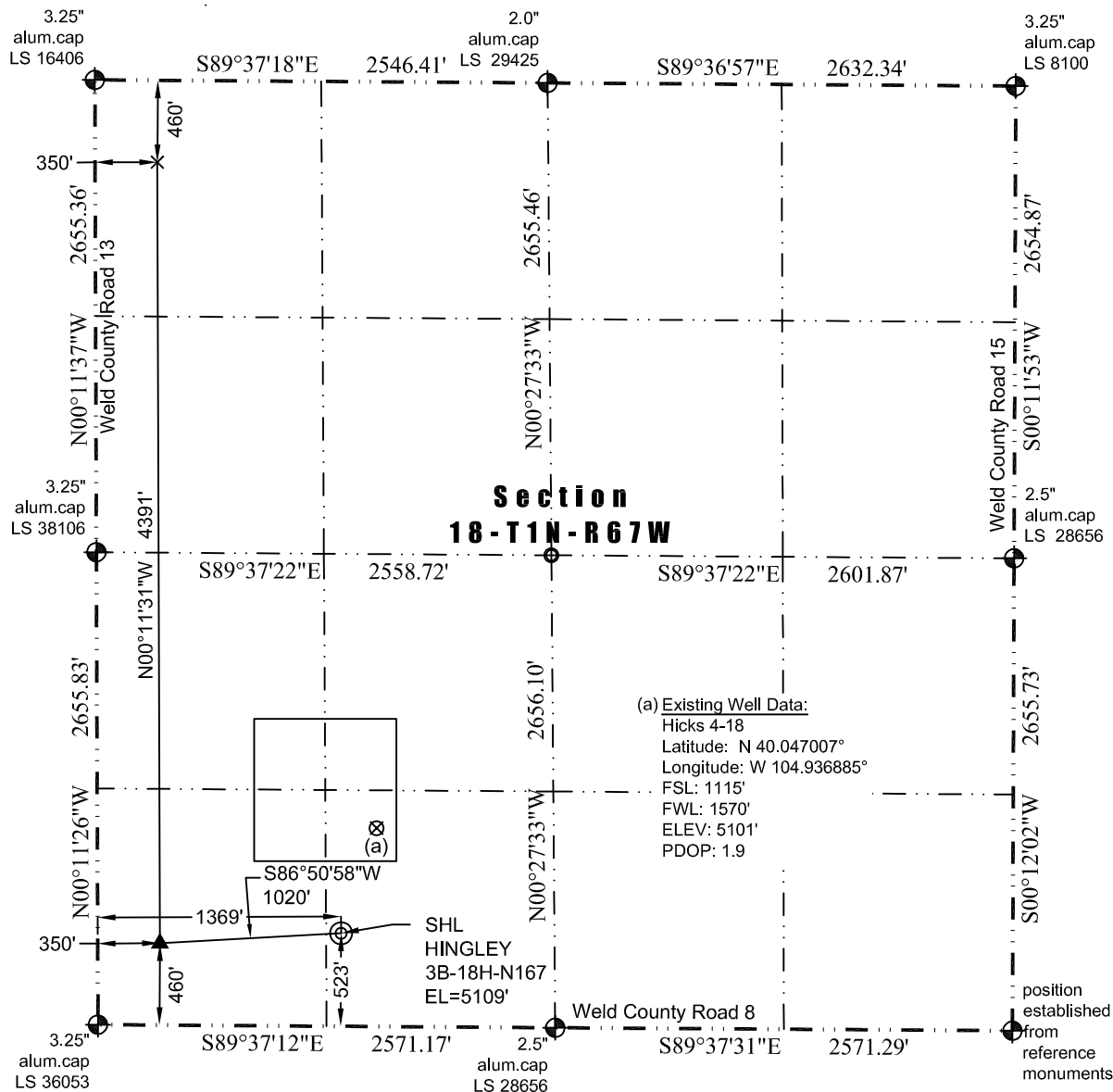




WELL LOCATION CERTIFICATE

THIS MAP DOES NOT REPRESENT A BOUNDARY SURVEY

Washburn Land Surveying
www.WashburnSurveying.com
970-232-9645



(a) Existing Well Data:
Hicks 4-18
Latitude: N 40.047007°
Longitude: W 104.936885°
FSL: 1115'
FWL: 1570'
ELEV: 5101'
PDOP: 1.9

In accordance with a request from Jay Knutson of Crestone Peak Resources, Washburn Land Surveying, LLC has determined the location of the **Hingley 3B-18H-N167** well site to be SHL: 523' FSL and 1369' FWL, (TPZ: 460' FSL and 350' FWL, BHL: 460' FNL and 350' FWL), as measured at ninety (90) degrees from the section lines of Section 18, Township 1 North, Range 67 West of the 6th Principal Meridian, Weld County Colorado.

Proposed Surface Hole Data:

Latitude: N 40.045389°
Longitude: W 104.937609°
PDOP: 1.3

Proposed TPZ Data:

Latitude: N 40.045252°
Longitude: W 104.941250°

Proposed Bottom Hole Data:

Latitude: N 40.057307°
Longitude: W 104.941203°

Nearest Cultural Items:

Building: 954' southeast
Building Unit: 858' southeast
Public Road: 509' south
Property Line: 523' south
Existing Well: 624' northeast (Hicks 4-18)

Above Ground Utility: 488' south
Well Window: SHL is 406' Outside
Railroad: +5280'
High Occupancy Building Unit: +5280'
Designated Outside Activity Area: +5280'

LEGEND

- ⊕ - Found Survey Monument
- - Calculated Location
- ⊙ - Surface Hole Location (SHL)
- ▲ - Top of Production Zone (TPZ)
- × - Bottom Hole Location (BHL)

Notes:

- 1) Bearings and distances based on NAD 83 Colorado North State Plane Coordinate, using RTK GPS observations taken 10/31/17 by operator Jason Dahlman
- 2) Conversion factor to ground (1.0002768105).
- 3) Elevations based on NAVD 88 GPS heights and Geoid 2009 corrections.
- 4) See Location Drawing for visible improvements within 500 feet of Pad Site.
- 5) The surface use is a cultivated field.

NOTICE: According to Colorado law you must commence any legal action based upon any defect in this W.L.C. within three years after you first discover such defect. In no event may any action based upon any defect in this W.L.C. be commenced more than ten years from this said date of the certification shown hereon.

I hereby certify that this Well Location Certificate was prepared by me or under my direct supervision on 1/29/2018 for and on behalf of Crestone Peak Resources, that it is not a Land Survey Plat or an Improvement Survey Plat and that it is not to be relied upon for establishment of fences, buildings, or other future improvement lines.

John Robert McGehee, L.S. 3219
Well: Hingley 3B-18H-N167 WLC