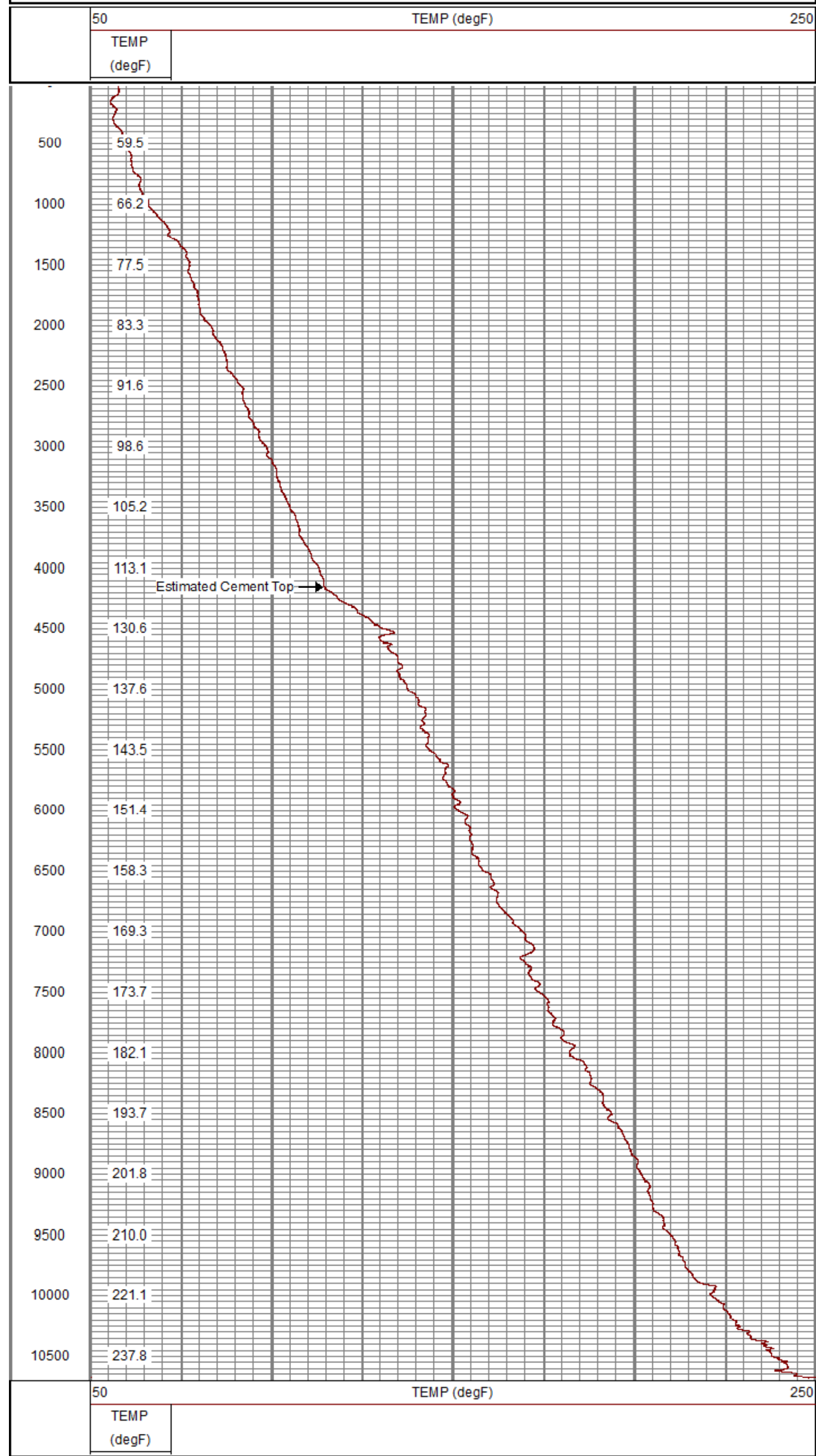


<<< Fold Here >>>
<p>All interpretations are opinions based on inferences from electrical or other measurements and we cannot and do not guarantee the accuracy or correctness of any interpretation, and we shall not, except in the case of gross or willful negligence on our part, be liable or responsible for any loss, costs, damages, or expenses incurred or sustained by anyone resulting from any interpretation made by any of our officers, agents or employees. These interpretations are also subject to our general terms and conditions set out in our current Price Schedule.</p>
<p style="text-align: center;"><u>Comments</u></p>
<p style="text-align: center;">Log ran as per customer request Depth referenced to Kelly Bushing at 24 FT Marker Joint logged from 6532 FT to 6553 FT Log ran from 10694 FT to Surface Log ran with 0 PSI Surface Induced Pressure</p> <p style="text-align: center;">Thank you for choosing Reliance Oilfield Services, LLC!!</p>

Database File	tep_federal ru 314-17_temp_05-06-18\processed_tep_federal ru 314-17_temp_05-06-18.db
Dataset Pathname	main.1
Presentation Format	ros_temp_ql_tep
Dataset Creation	Sun May 06 03:16:21 2018
Charted by	Depth in Feet scaled 1:10000



O.D.:	3.13 in
-------	---------

Temperature Calibration Report

Gamma Ray Calibration Report

	Company	TEP Rocky Mountain LLC
	Well	Federal RU 314-17
	Field	Rulison
	County	Garfield
	State	Colorado